

kodo

Apartment Type A1

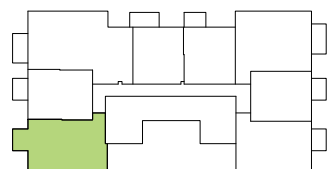
L06 - L21

2 Bedrooms/1 Bathroom

Apartment Area : 72m²

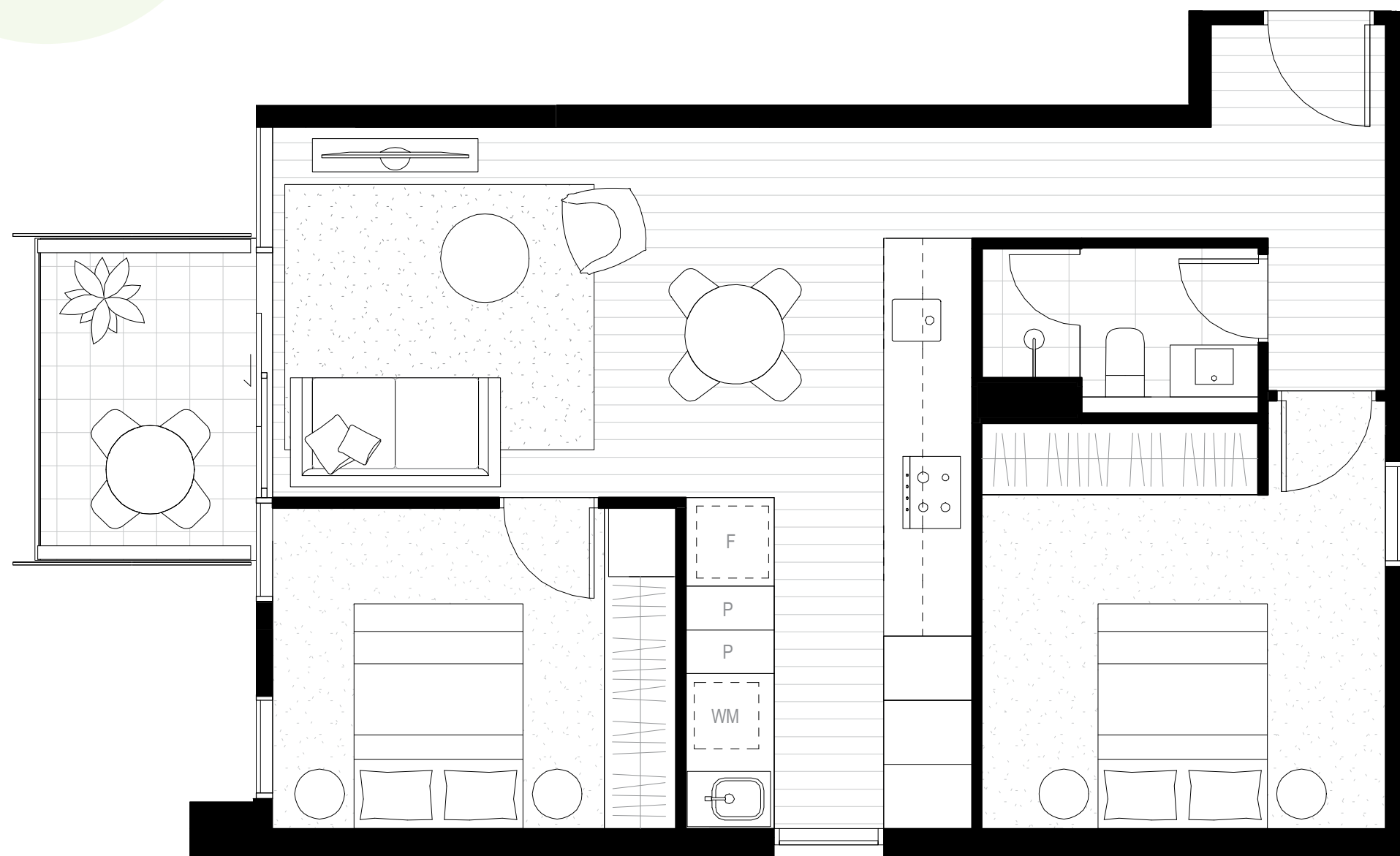
Balcony Area : 6m²

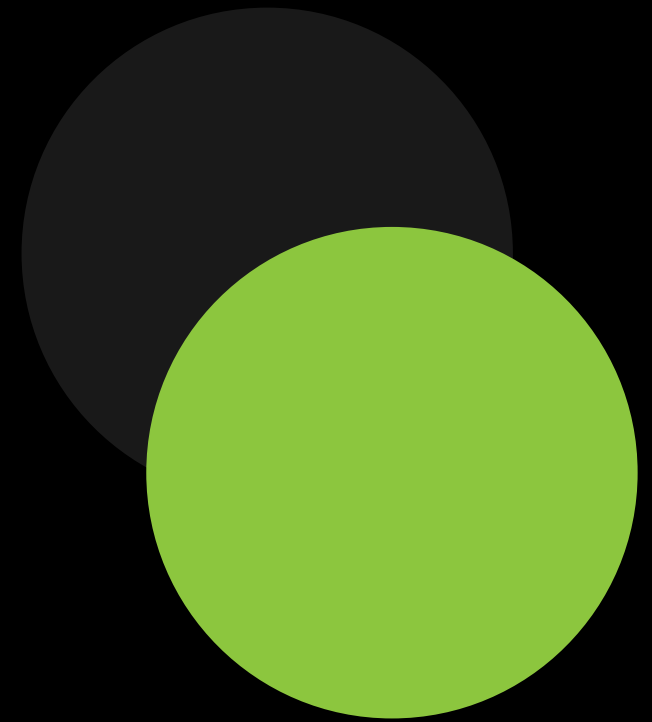
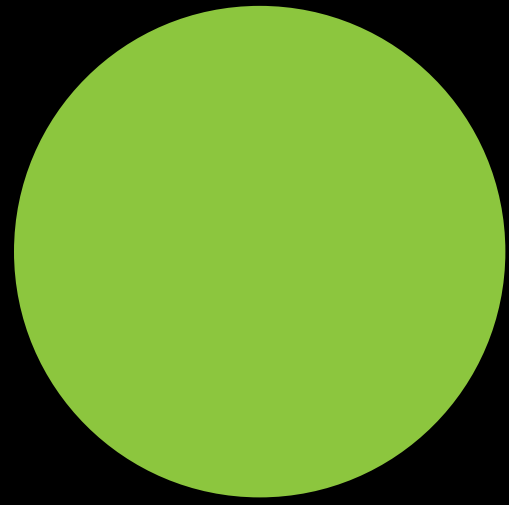
Total Area : 78m²



Disclaimer.

The documents provided are indicative only and subject to change without notice. Co-ordination with engineering disciplines and general design development may effect layouts. The user should make their own inquiries as to the accuracy of the information contained. Facade and Balcony locations indicative only. Please refer to overall level floor plans.





kodo

Apartment Type A

L02 - L04

2 Bedrooms/1 Bathroom

Apartment Area : 72m²

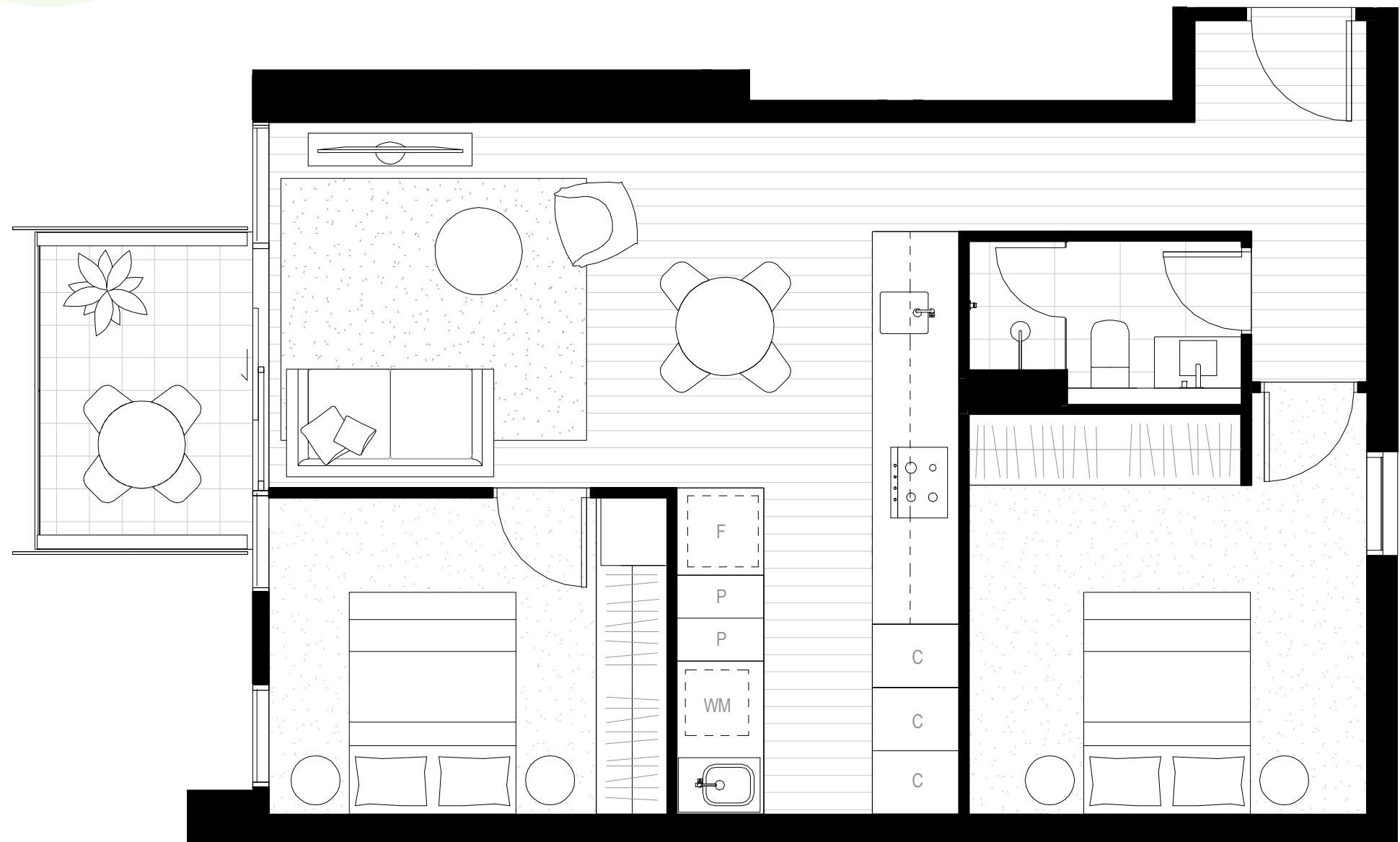
Balcony Area : 6m²

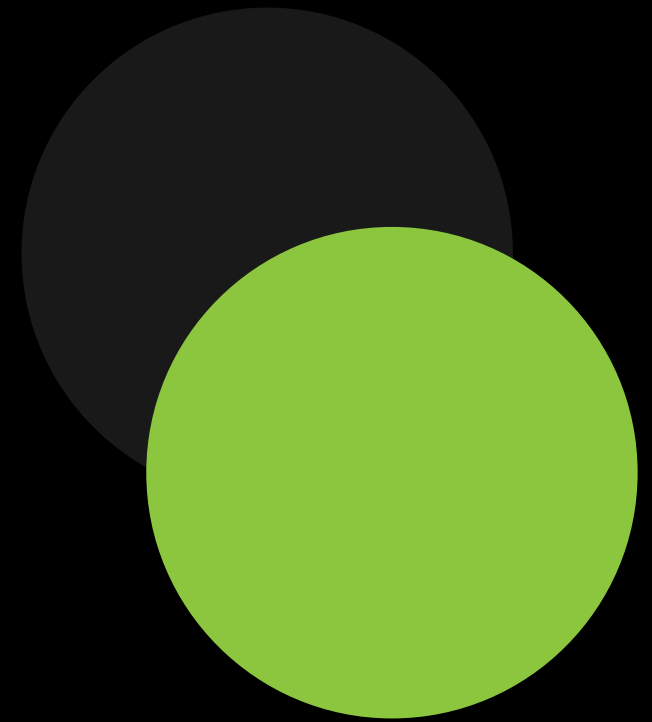
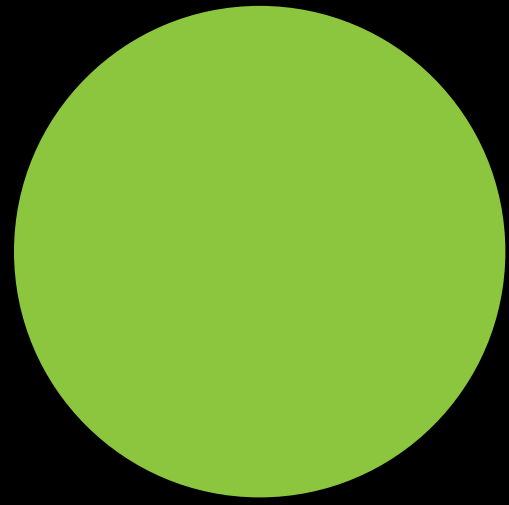
Total Area : 78m²



Disclaimer.

The documents provided are indicative only and subject to change without notice. Co-ordination with engineering disciplines and general design development may effect layouts. The user should make their own inquiries as to the accuracy of the information contained. Facade and Balcony locations indicative only. Please refer to overall level floor plans.





kodo

Apartment Type B

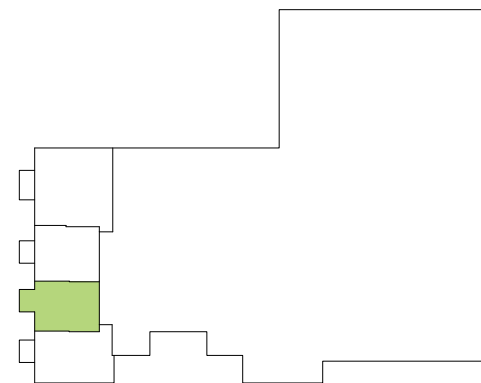
L02 – L04, L06 – L28

1 Bedroom/1 Bathroom

Apartment Area : 56.5m²

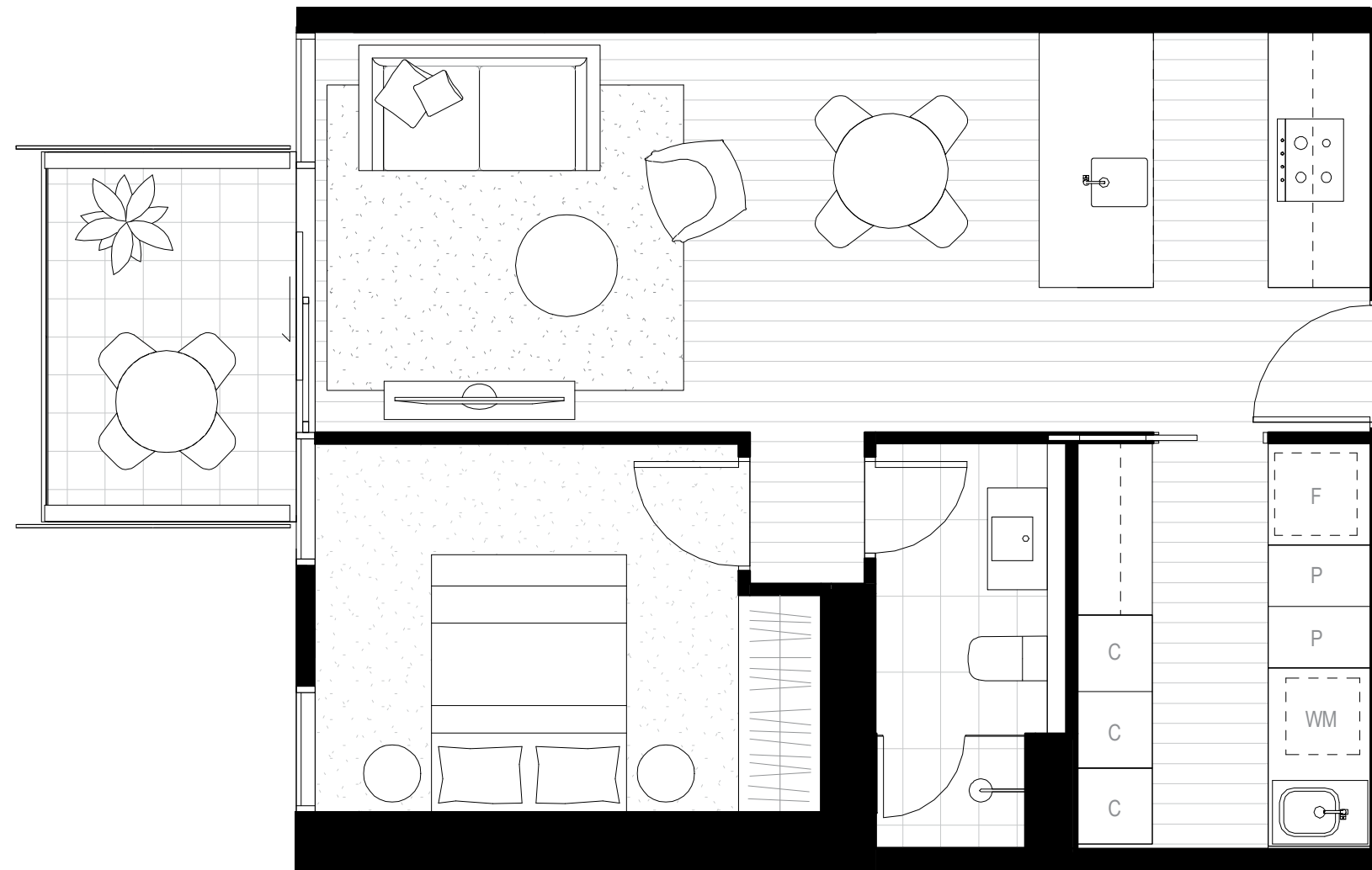
Balcony Area : 6m²

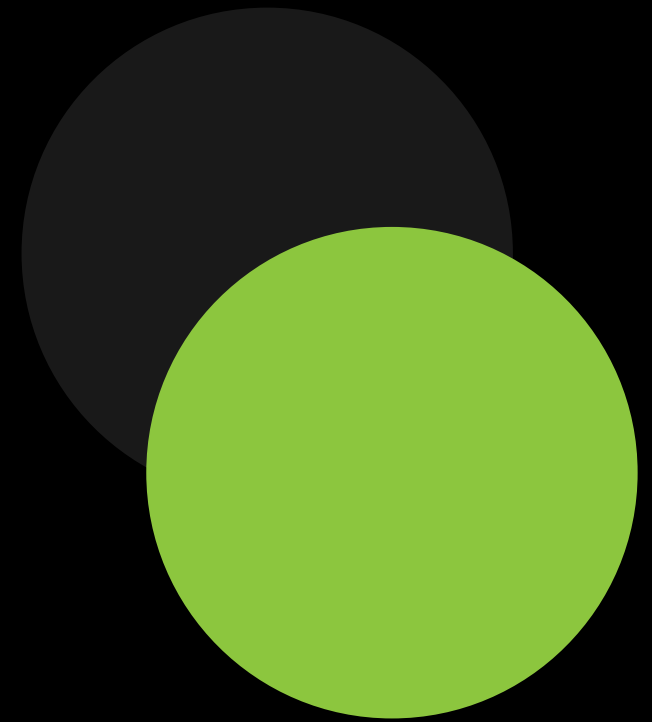
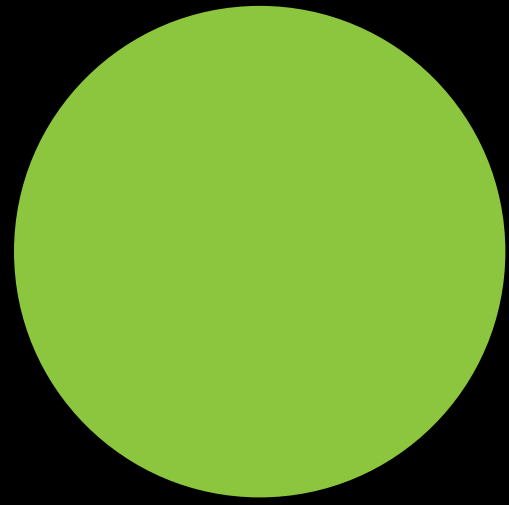
Total Area : 62.5m²



Disclaimer.

The documents provided are indicative only and subject to change without notice. Co-ordination with engineering disciplines and general design development may effect layouts. The user should make their own inquiries as to the accuracy of the information contained. Facade and Balcony locations indicative only. Please refer to overall level floor plans.





kodo

Apartment Type C

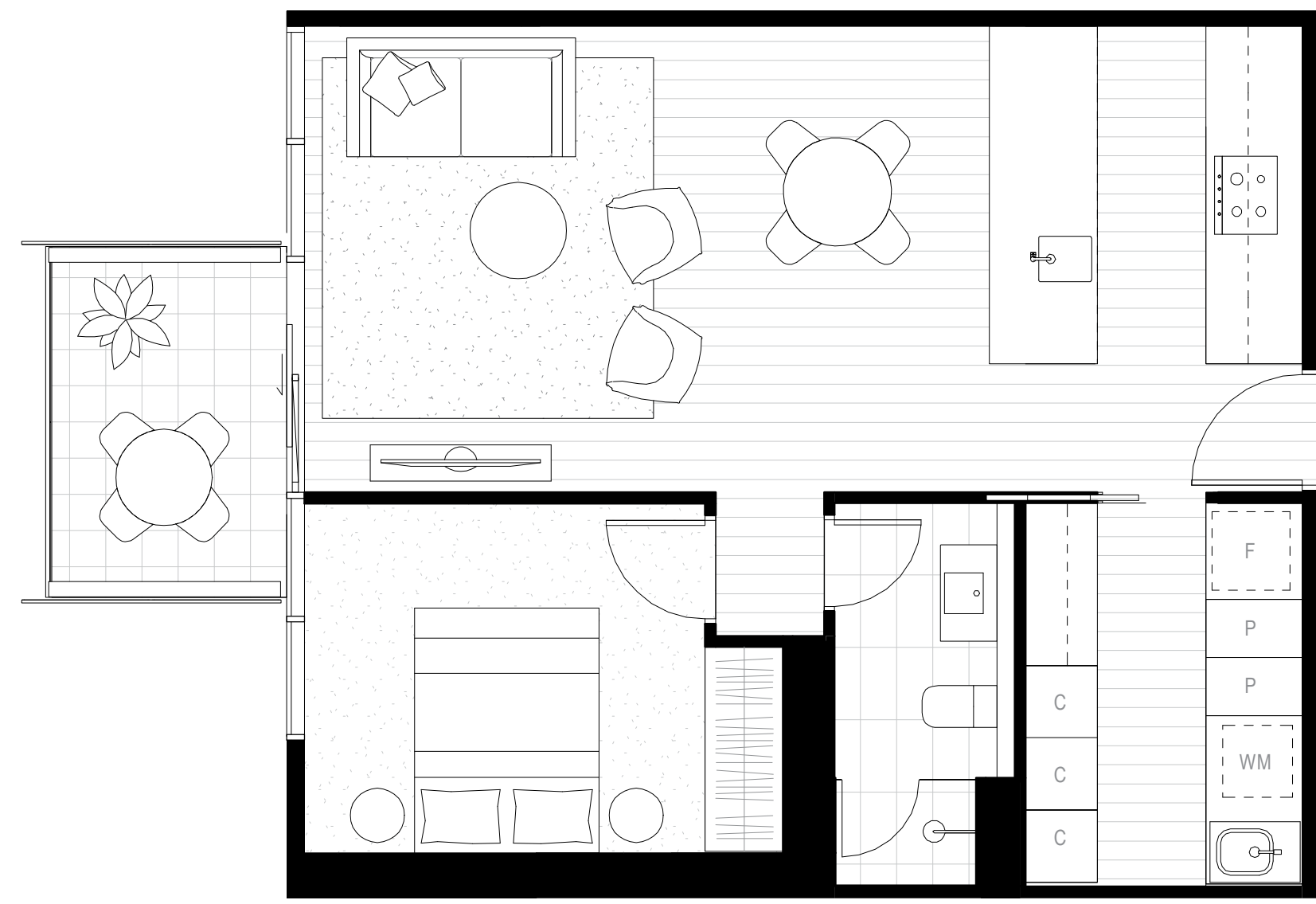
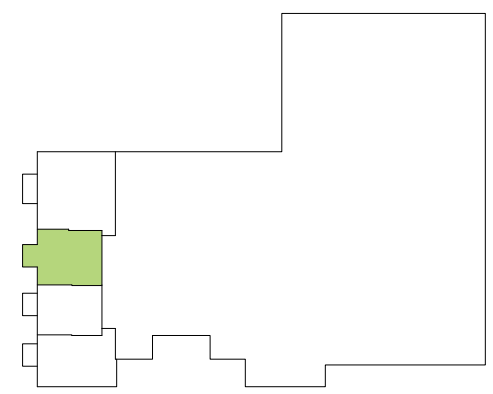
L02 - L04

1 Bedroom/1 Bathroom

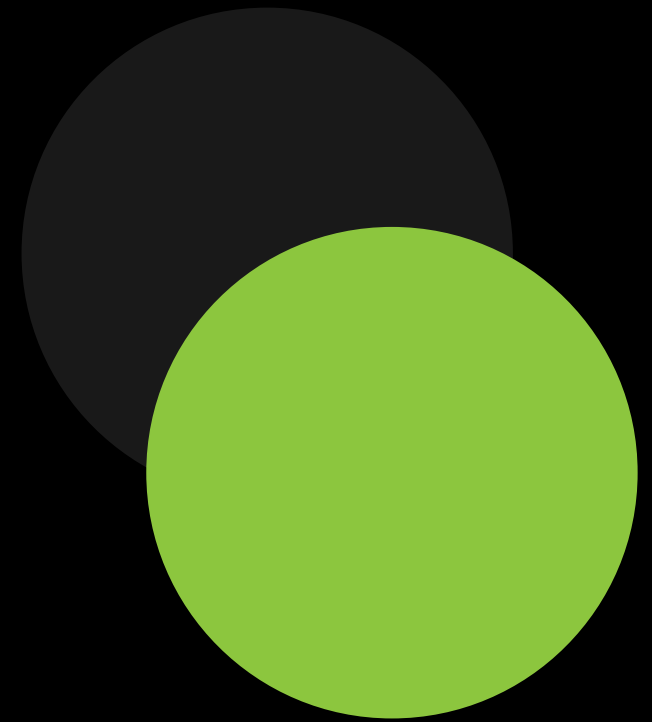
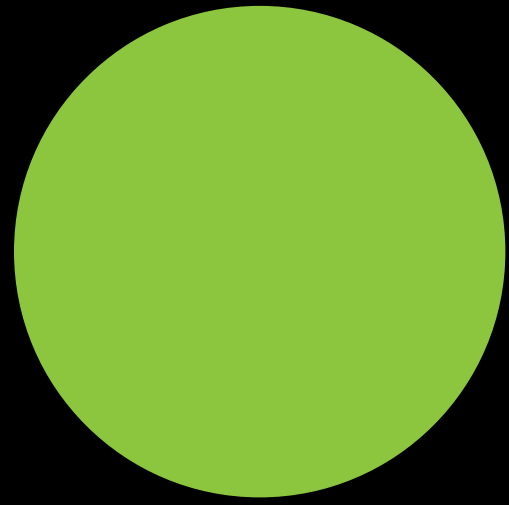
Apartment Area : 63m²

Balcony Area : 6m²

Total Area : 69m²



Disclaimer.
The documents provided are indicative only and subject to change without notice. Co-ordination with engineering disciplines and general design development may effect layouts. The user should make their own inquiries as to the accuracy of the information contained. Facade and Balcony locations indicative only. Please refer to overall level floor plans.



kodo

Apartment Type D

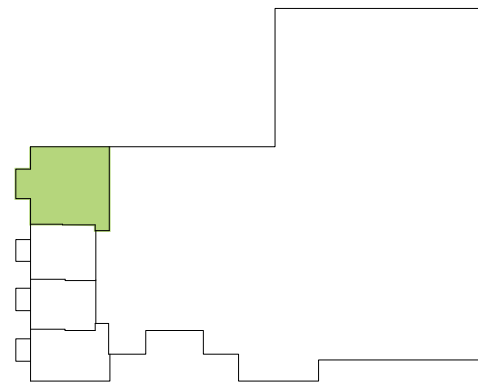
L02 - L04

2 Bedrooms/2 Bathrooms

Apartment Area : 108m²

Balcony Area : 8m²

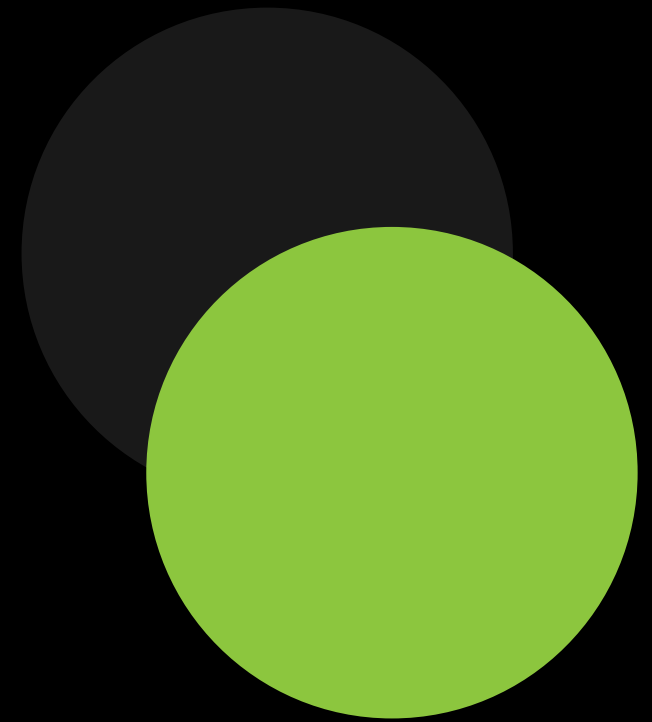
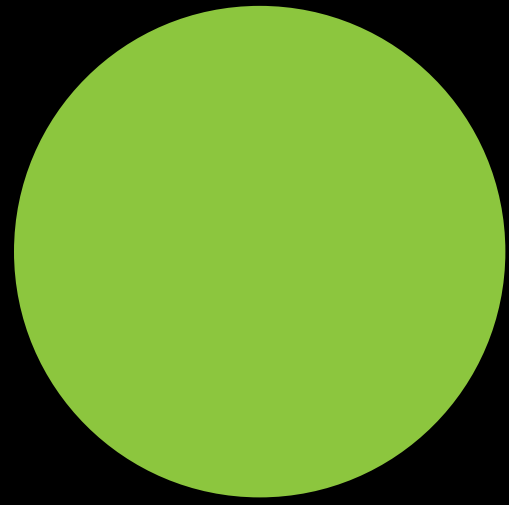
Total Area : 116m²



Disclaimer.

The documents provided are indicative only and subject to change without notice. Co-ordination with engineering disciplines and general design development may effect layouts. The user should make their own inquiries as to the accuracy of the information contained. Facade and Balcony locations indicative only. Please refer to overall level floor plans.





kodo

Loft Type E

L05 - LM05

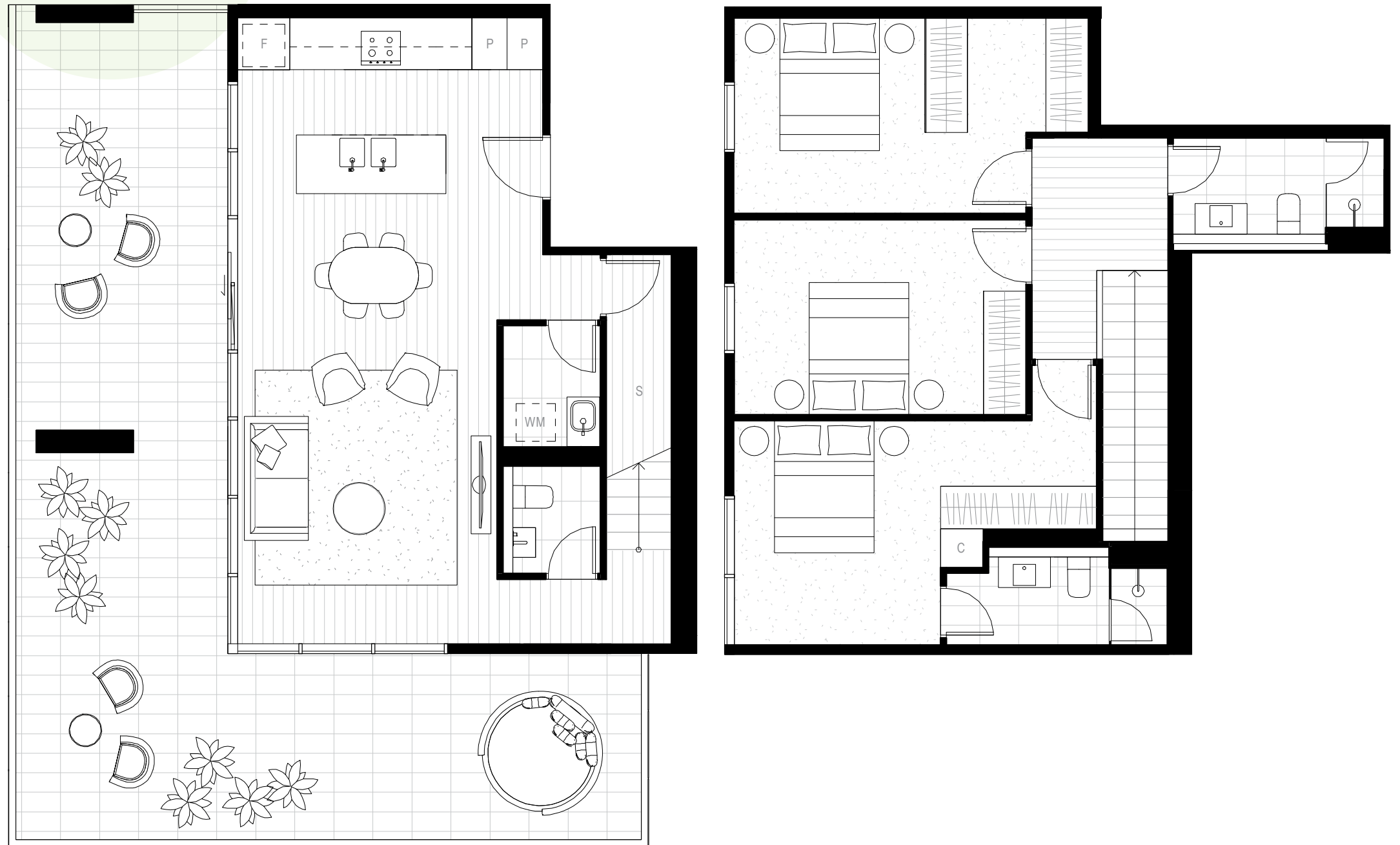
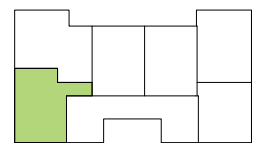
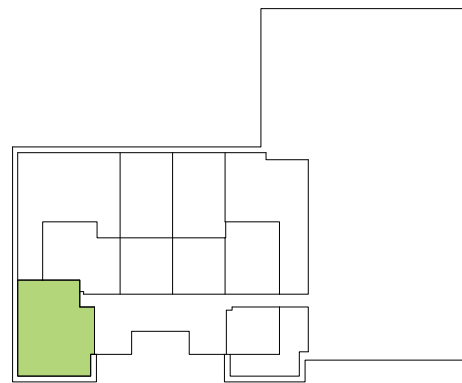
3 Bedrooms/3 Bathrooms

Lower Floor Area : 61m²

Balcony Area : 59.5m²

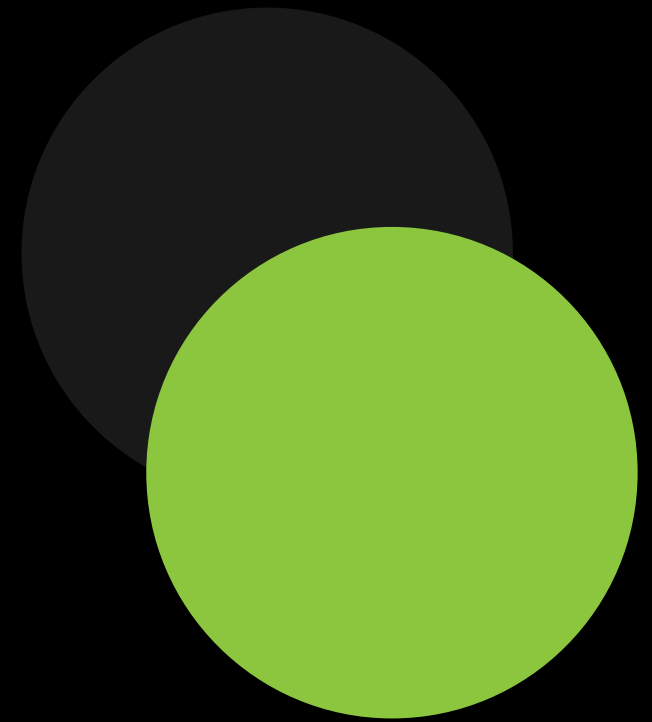
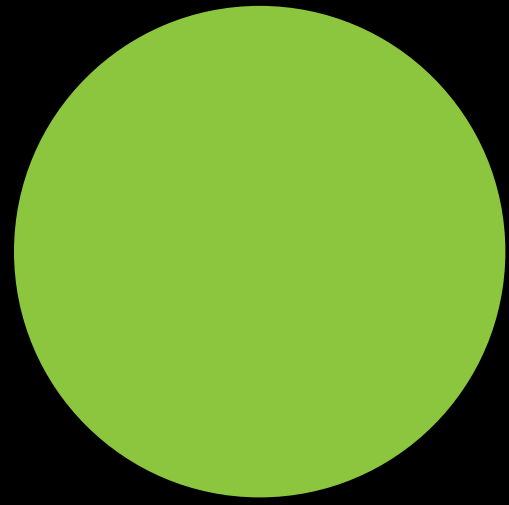
Upper Floor Area : 72m²

Total Area : 192.5m²



Disclaimer.

The documents provided are indicative only and subject to change without notice. Co-ordination with engineering disciplines and general design development may effect layouts. The user should make their own inquiries as to the accuracy of the information contained. Facade and Balcony locations indicative only. Please refer to overall level floor plans.



kodo

Loft Type F

L05 - LM05

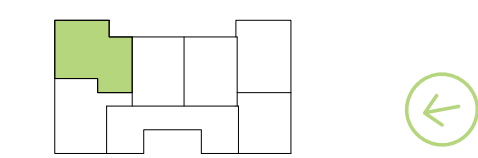
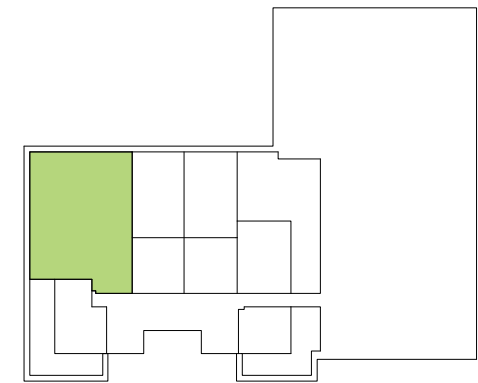
3 Bedrooms/3 Bathrooms

Lower Floor Area : 81.5m²

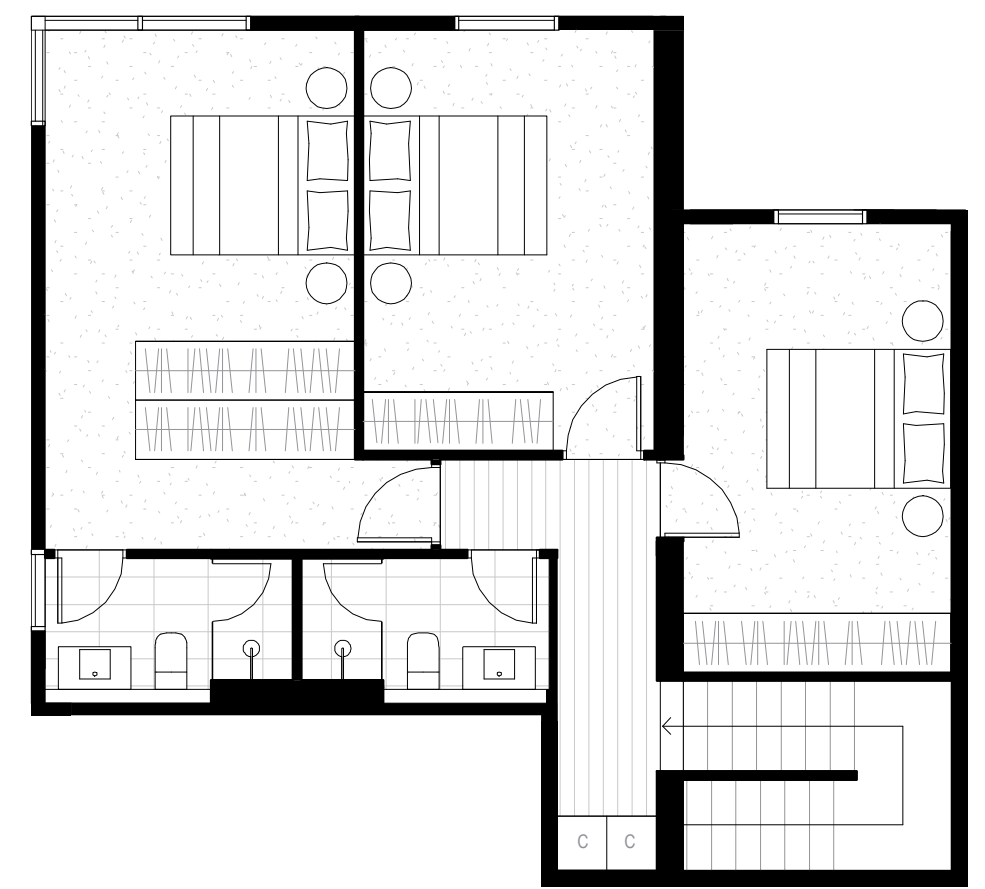
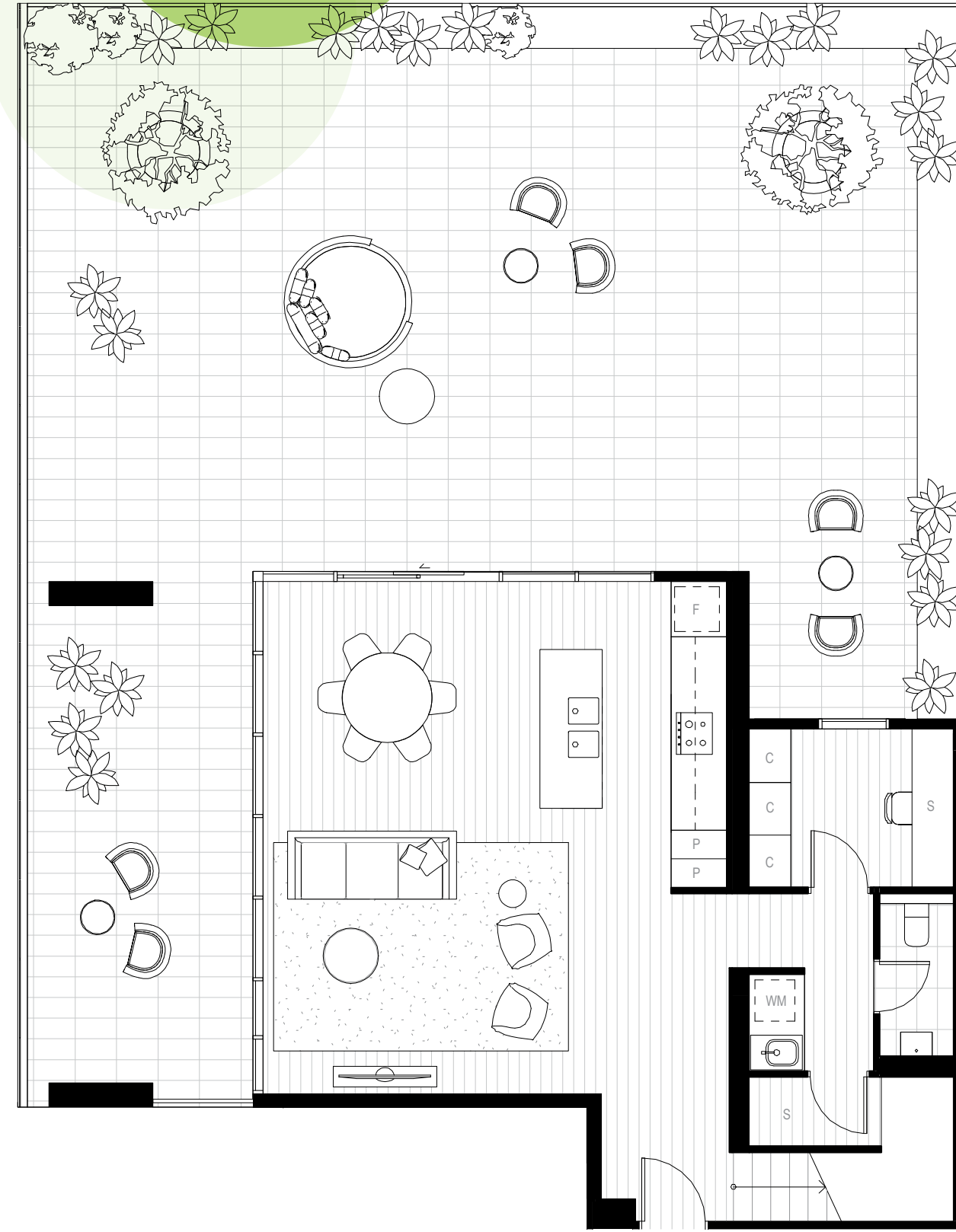
Balcony Area : 155.5m²

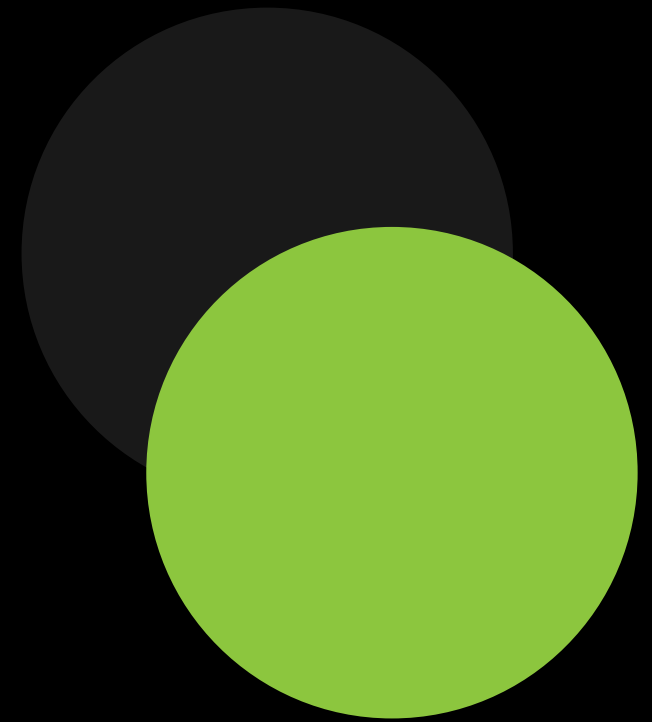
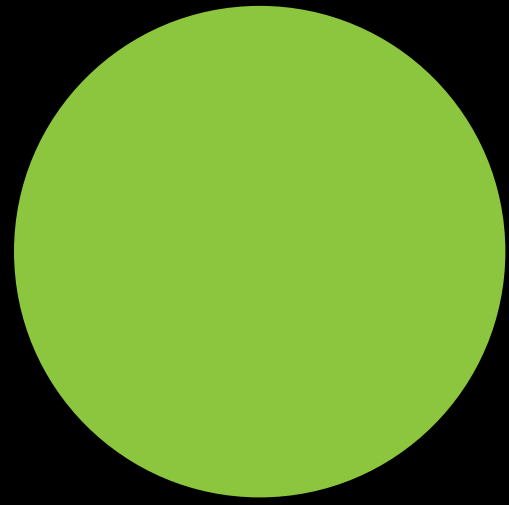
Upper Floor Area : 80.5m²

Total Area : 317.5m²



Disclaimer.
The documents provided are indicative only and subject to change without notice. Co-ordination with engineering disciplines and general design development may effect layouts. The user should make their own inquiries as to the accuracy of the information contained. Facade and Balcony locations indicative only. Please refer to overall level floor plans.





Kodo

Loft Type G1

L05 - LM05

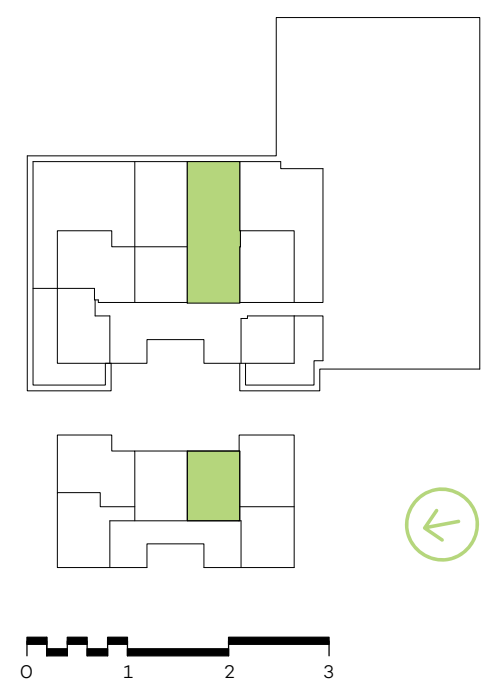
2 Bedrooms/2 Bathrooms

Lower Floor Area : 52m²

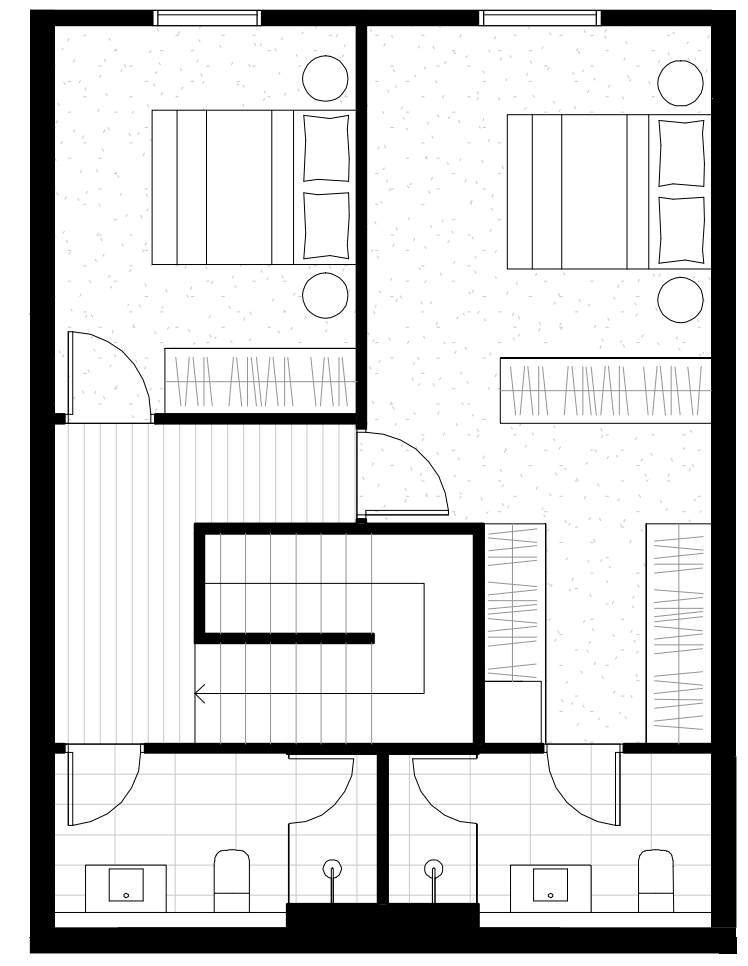
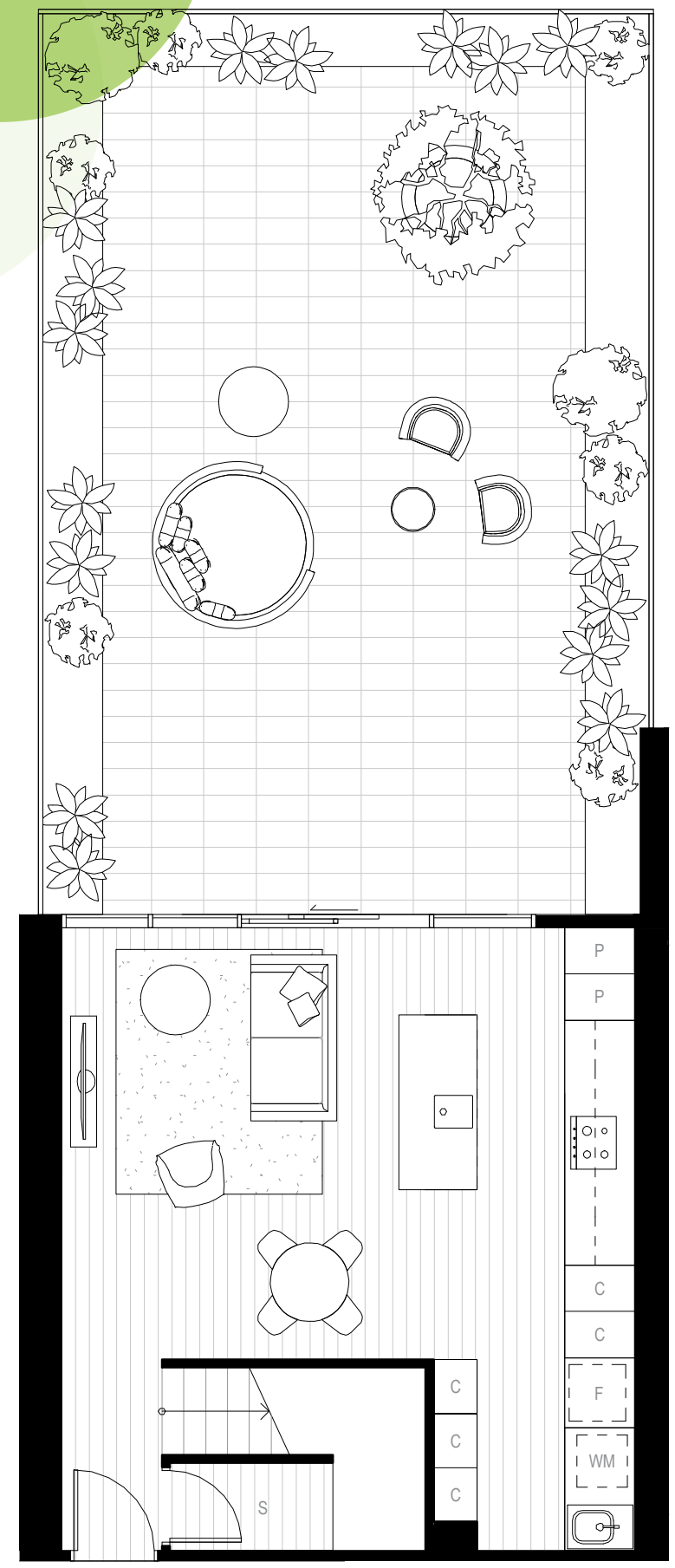
Balcony Area : 79m²

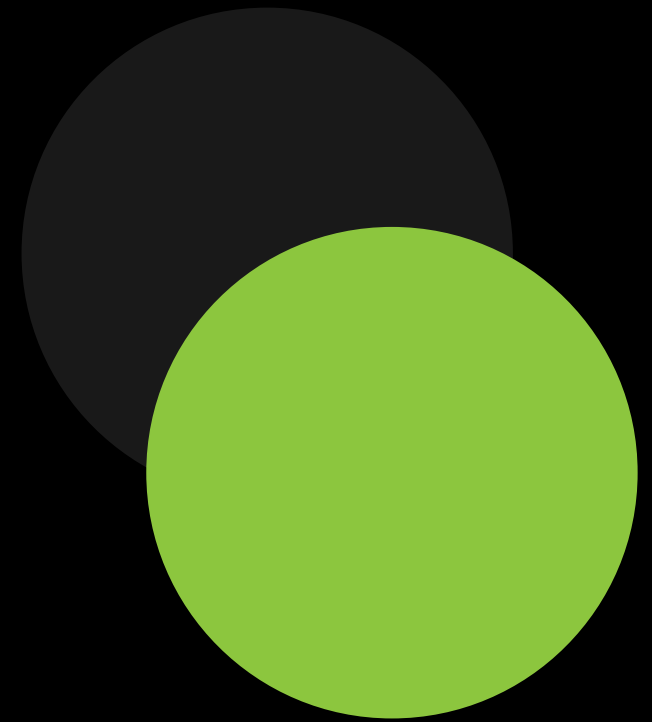
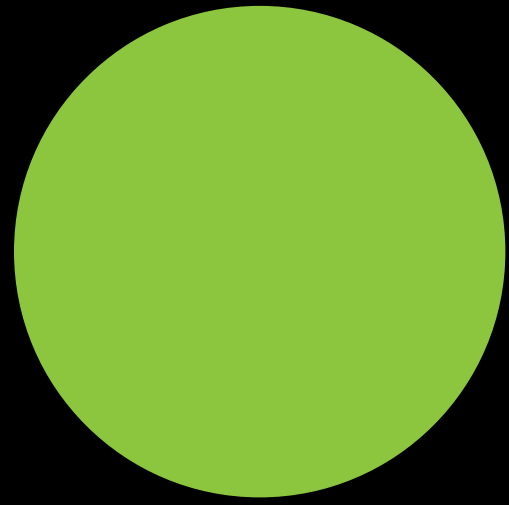
Upper Floor Area : 64m²

Total Area : 195m²



Disclaimer.
The documents provided are indicative only and subject to change without notice. Co-ordination with engineering disciplines and general design development may effect layouts. The user should make their own inquiries as to the accuracy of the information contained. Facade and Balcony locations indicative only. Please refer to overall level floor plans.





Kodo

Loft Type G

L05 - LM05

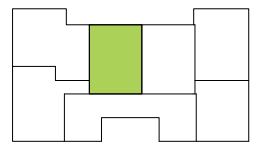
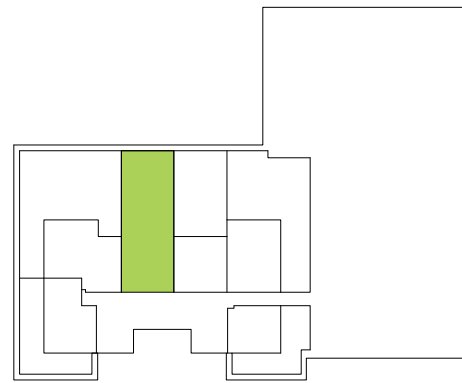
2 Bedrooms/2 Bathrooms

Lower Floor Area : 51.m²

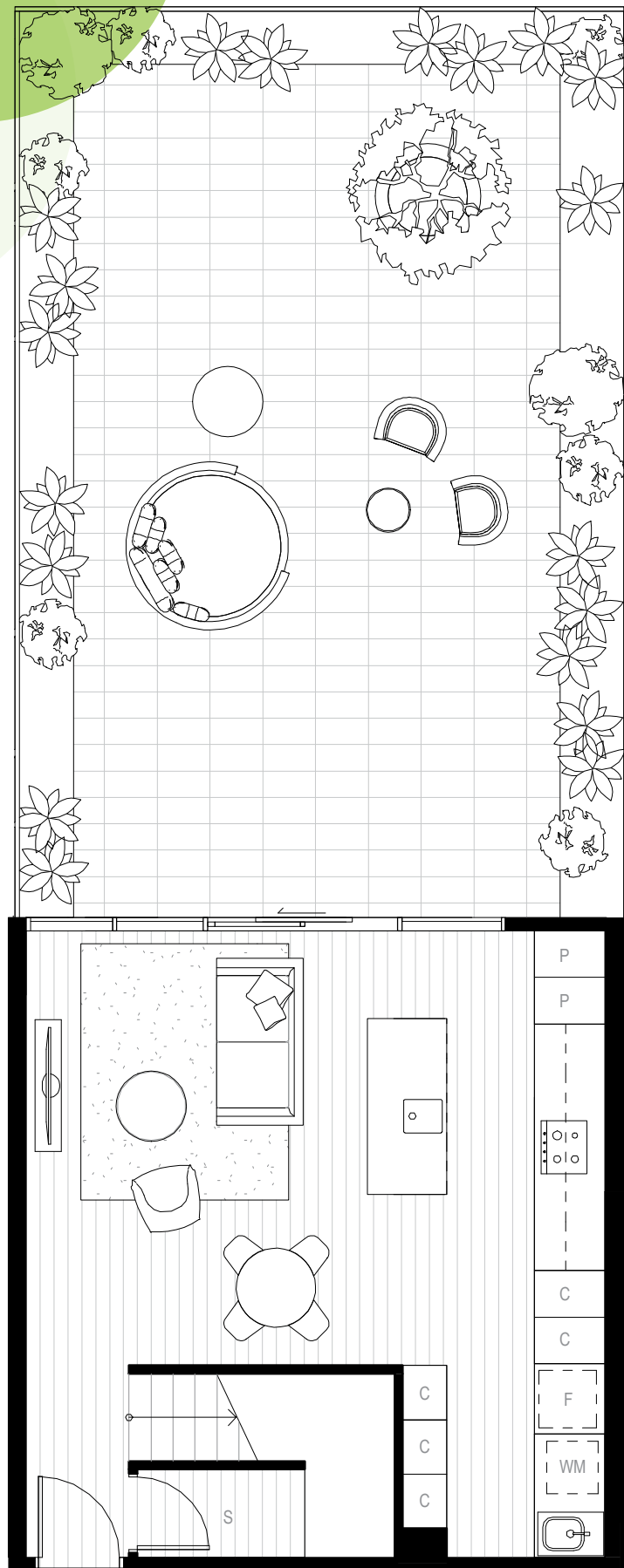
Balcony Area : 78.5m²

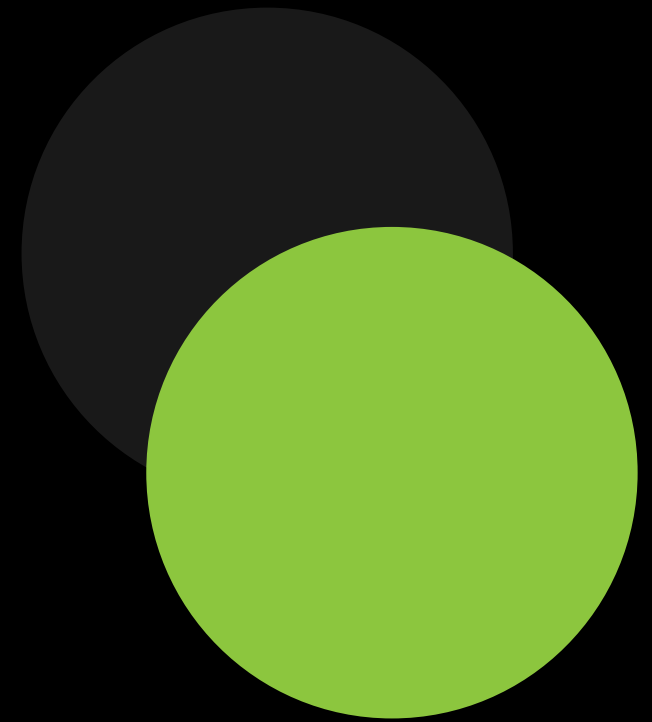
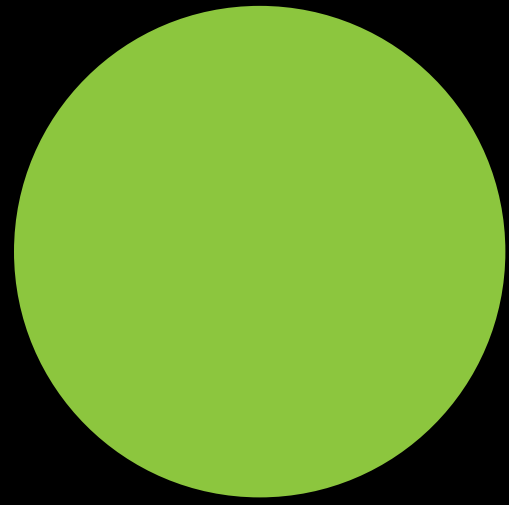
Upper Floor Area : 63.5m²

Total Area : 193m²



Disclaimer.
The documents provided are indicative only and subject to change without notice. Co-ordination with engineering disciplines and general design development may effect layouts. The user should make their own inquiries as to the accuracy of the information contained. Facade and Balcony locations indicative only. Please refer to overall level floor plans.





Kodo

Loft Type H

L05 - LM05

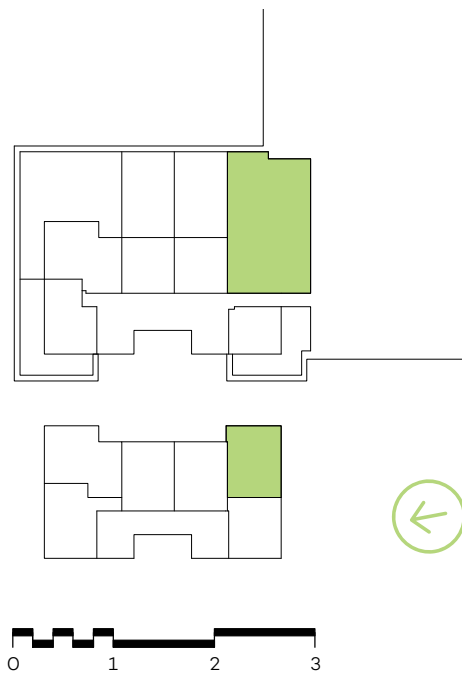
3 Bedrooms/3 Bathrooms

Lower Floor Area : 68m²

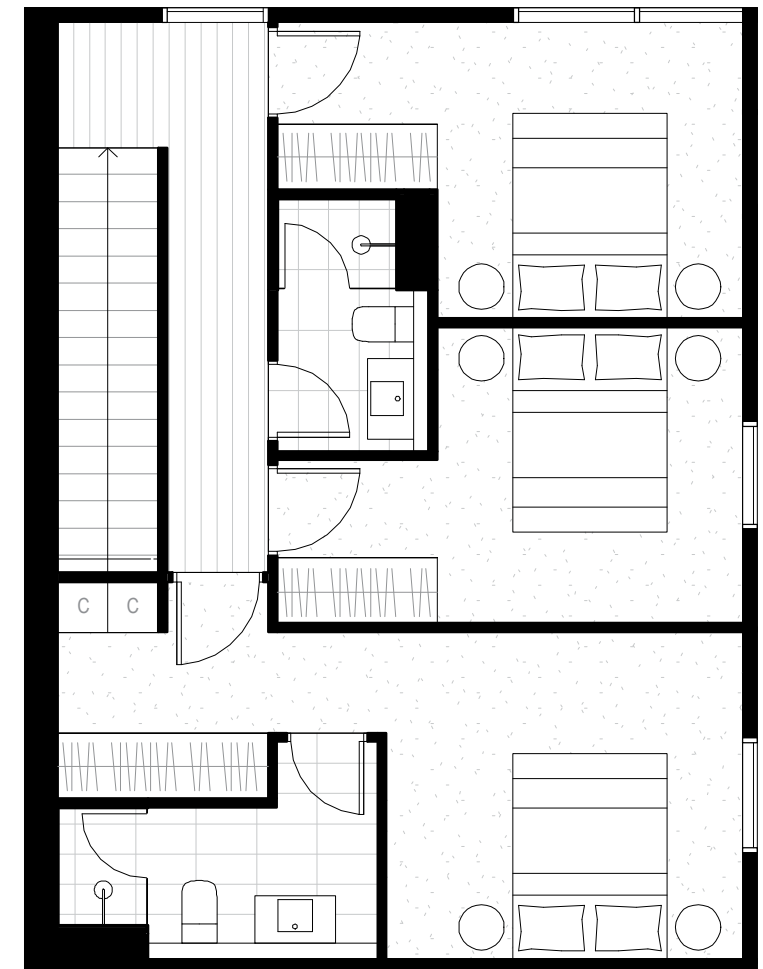
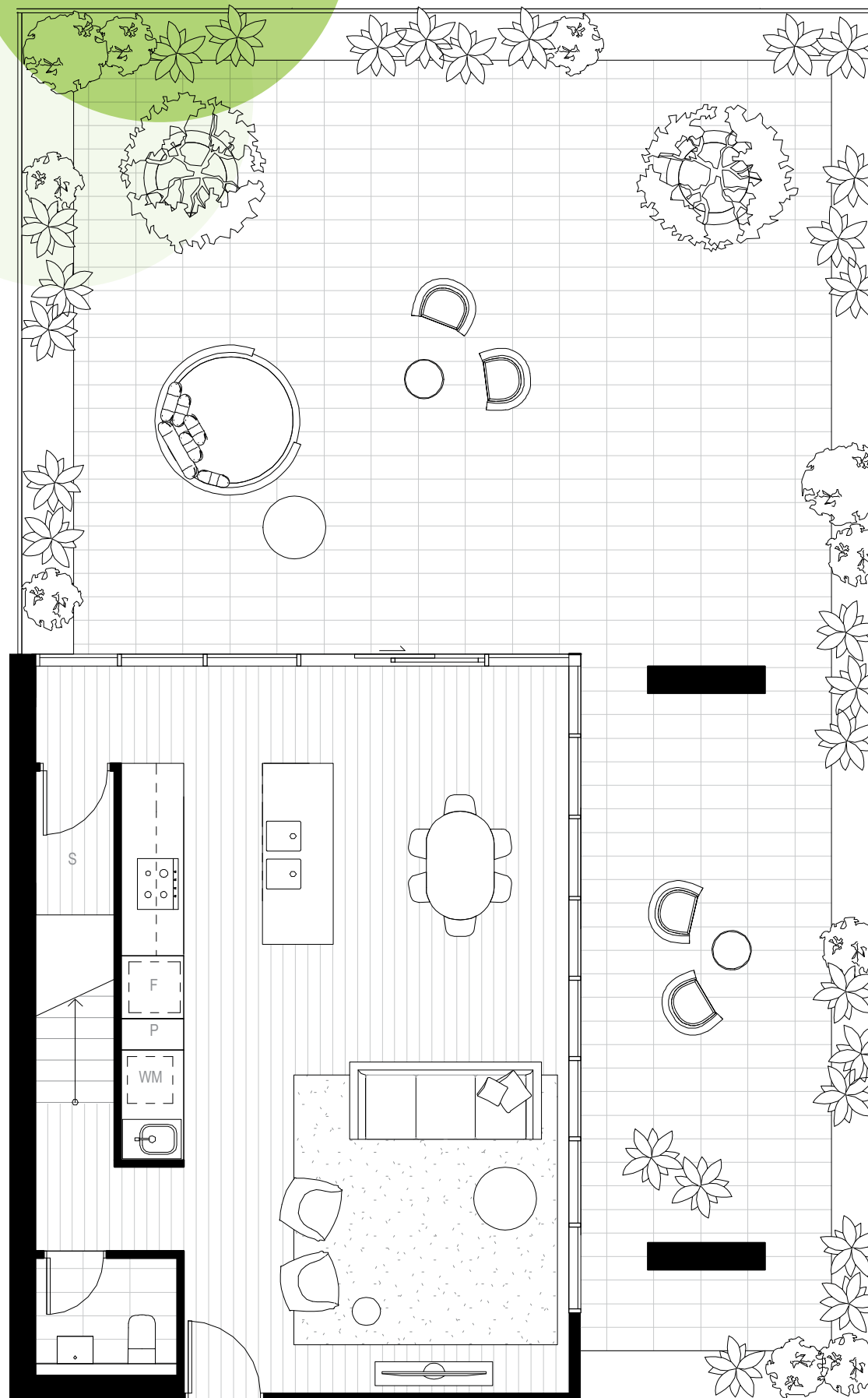
Balcony Area : 132m²

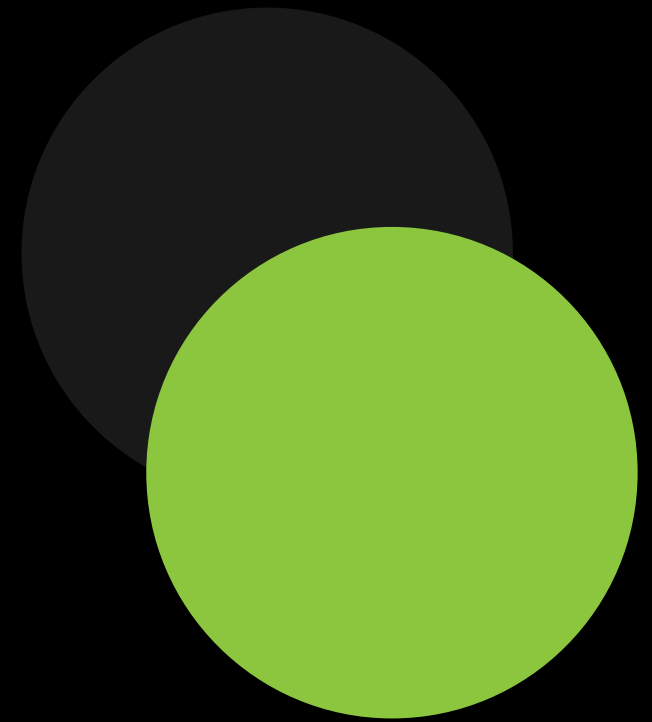
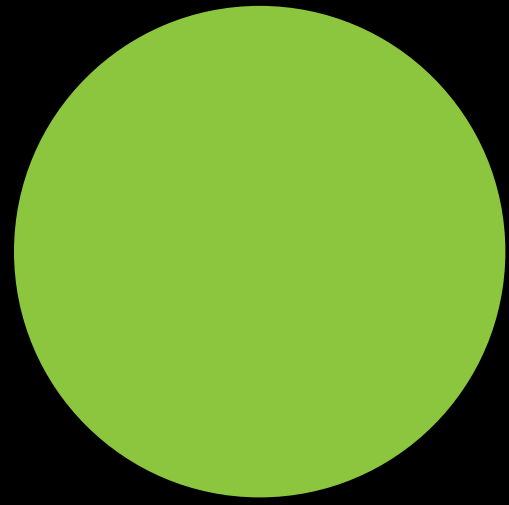
Upper Floor Area : 68.5m²

Total Area : 268.5m²



Disclaimer.
The documents provided are indicative only and subject to change without notice. Co-ordination with engineering disciplines and general design development may effect layouts. The user should make their own inquiries as to the accuracy of the information contained. Facade and Balcony locations indicative only. Please refer to overall level floor plans.





kodo

Loft Type J

L05 - LM05

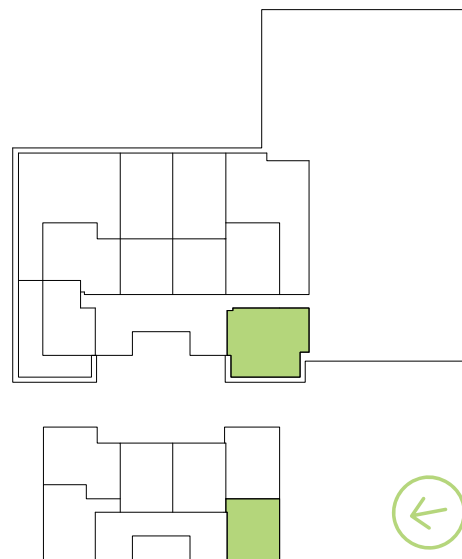
2 Bedrooms/2 Bathrooms

Lower Floor Area : 43.5m²

Balcony Area : 49.5m²

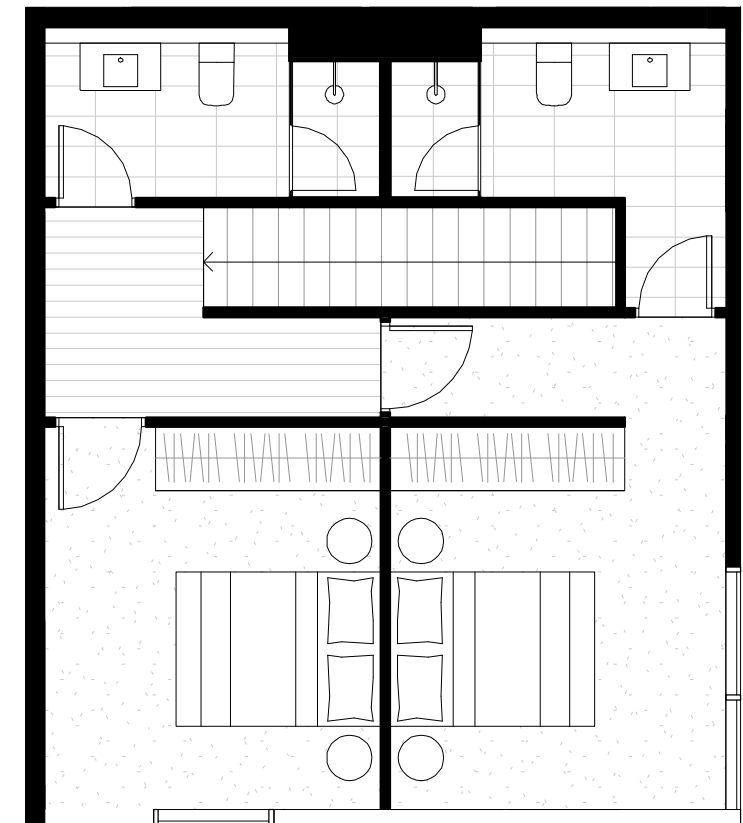
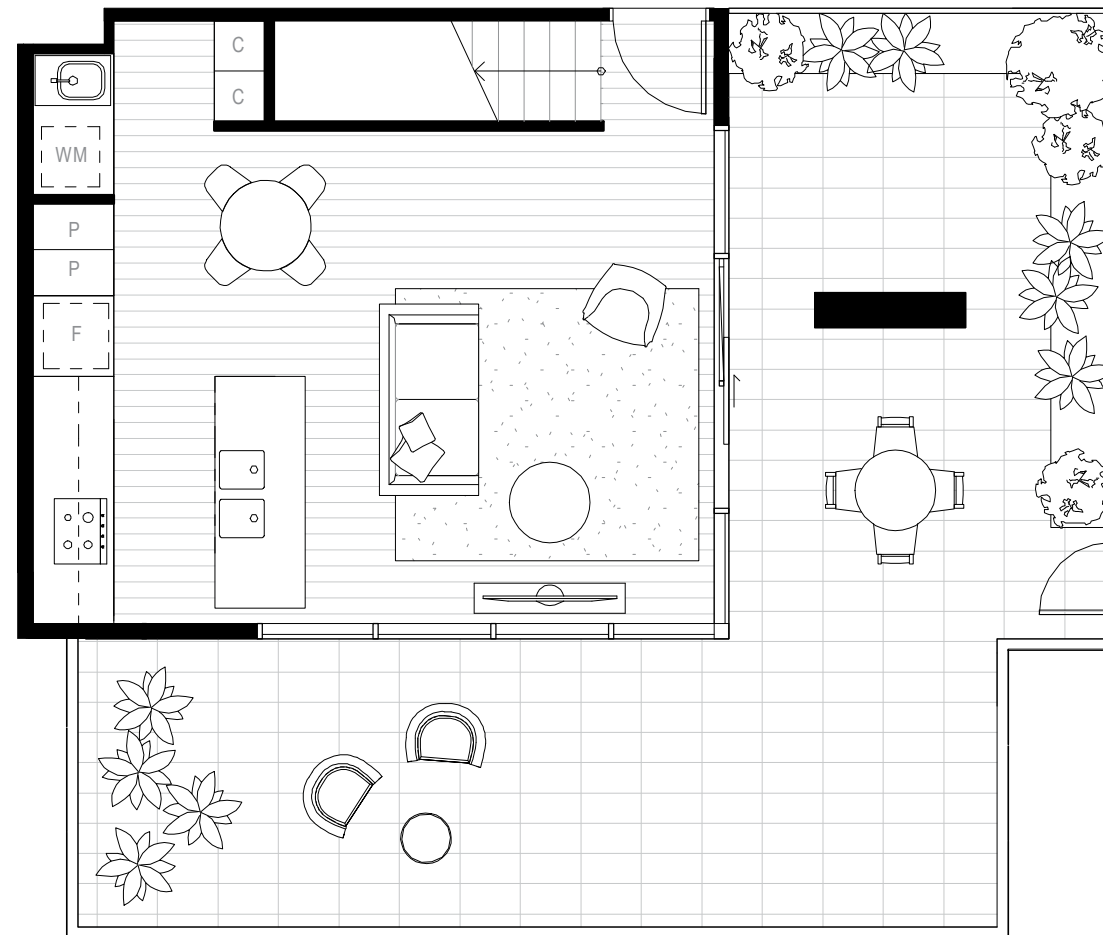
Upper Floor Area : 56.5m²

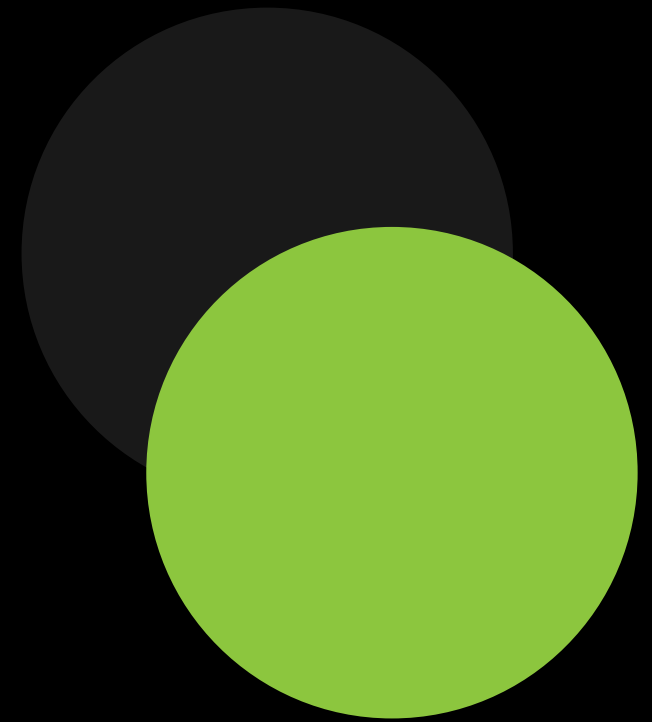
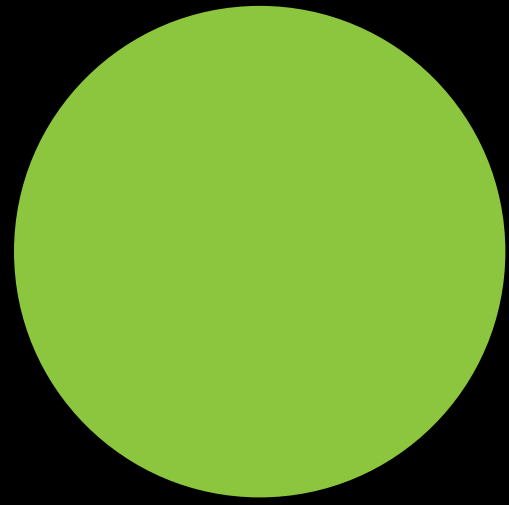
Total Area : 149.5m²



Disclaimer.

The documents provided are indicative only and subject to change without notice. Co-ordination with engineering disciplines and general design development may effect layouts. The user should make their own inquiries as to the accuracy of the information contained. Facade and Balcony locations indicative only. Please refer to overall level floor plans.





kodo

Apartment Type K

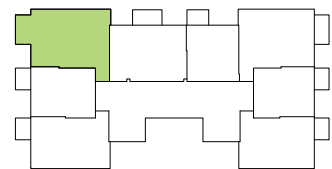
L06 – L24

2 Bedrooms/2 Bathrooms

Apartment Area : 85m²

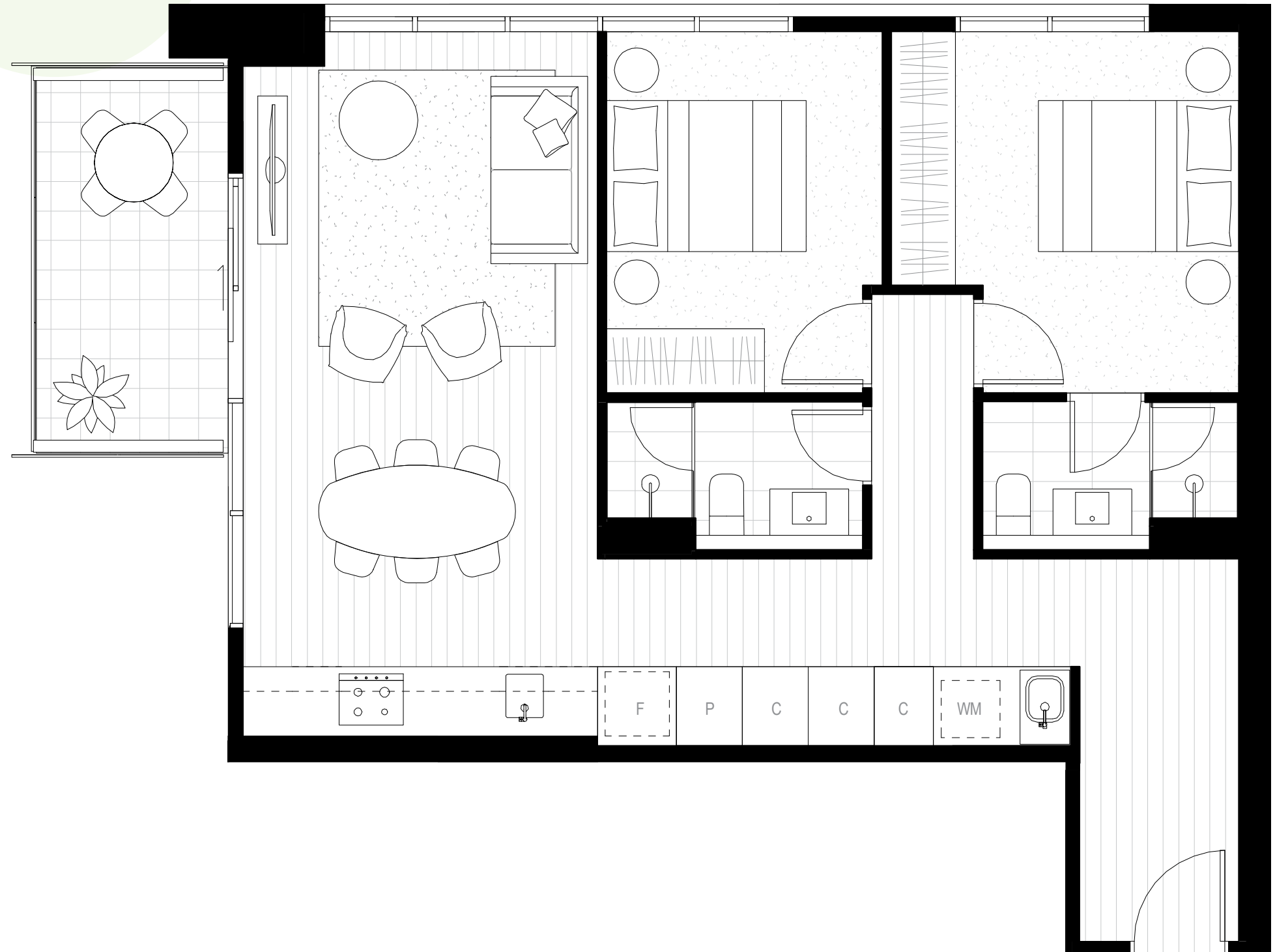
Balcony Area : 8m²

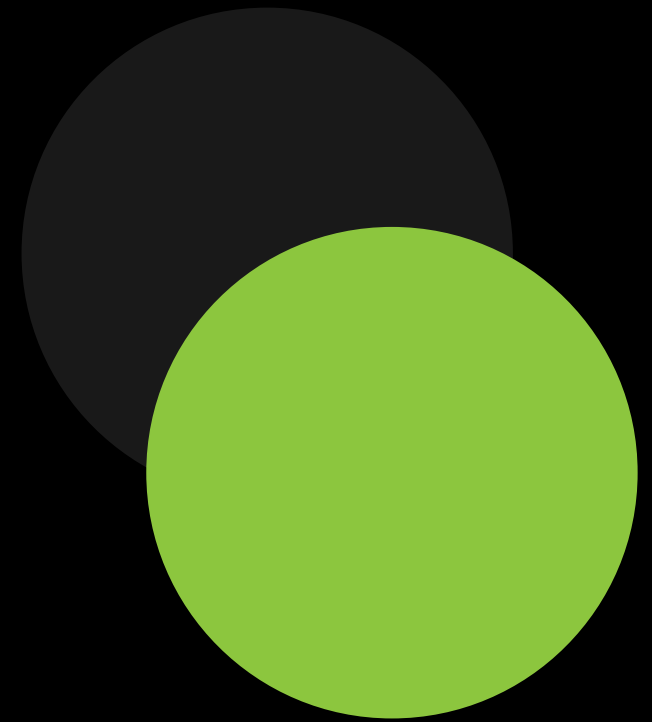
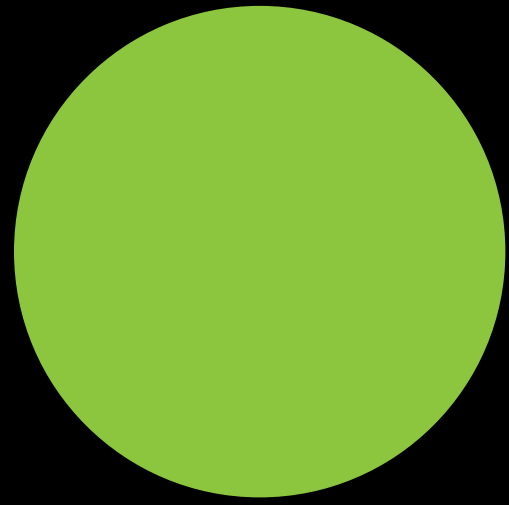
Total Area : 93m²



Disclaimer.

The documents provided are indicative only and subject to change without notice. Co-ordination with engineering disciplines and general design development may effect layouts. The user should make their own inquiries as to the accuracy of the information contained. Facade and Balcony locations indicative only. Please refer to overall level floor plans.





kodo

Apartment Type L

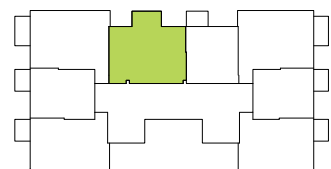
L06 - L24

2 Bedrooms/2 Bathrooms

Apartment Area : 76m²

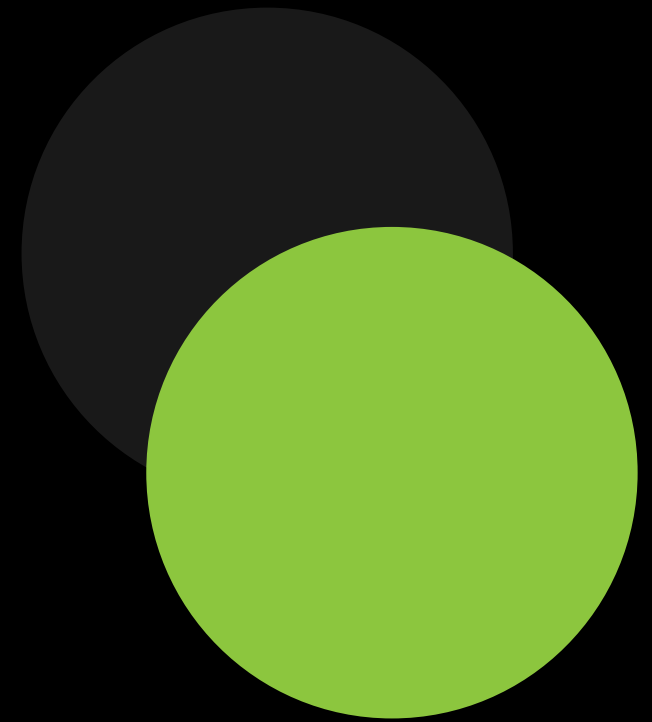
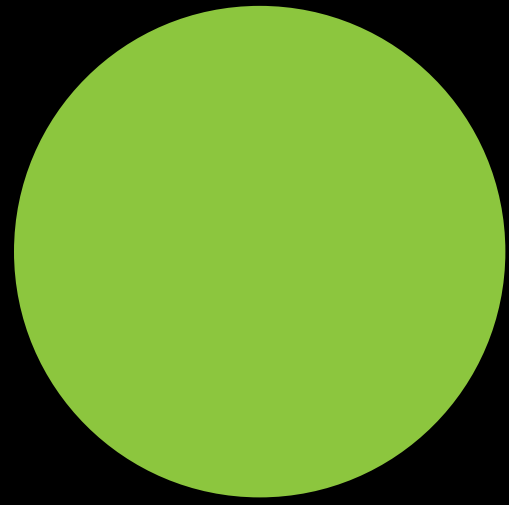
Balcony Area : 8m²

Total Area : 84m²



Disclaimer.
The documents provided are indicative only and subject to change without notice. Co-ordination with engineering disciplines and general design development may effect layouts. The user should make their own inquiries as to the accuracy of the information contained. Facade and Balcony locations indicative only. Please refer to overall level floor plans.





kodo

Apartment Type M1

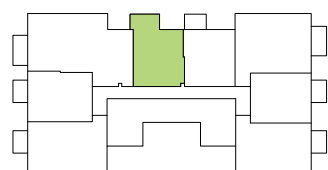
L25 - L28

1 Bedroom/1 Bathroom

Apartment Area : 50.5m²

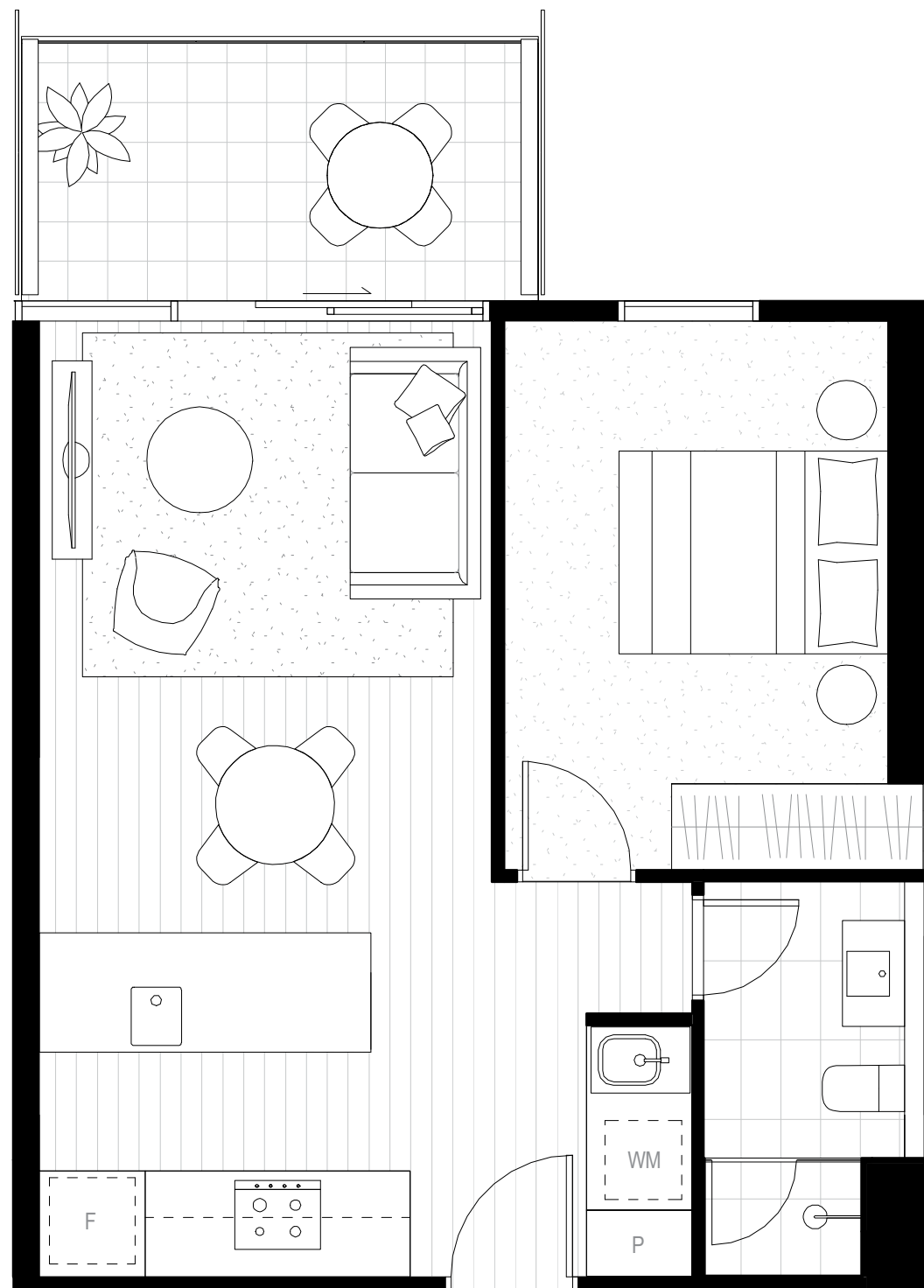
Balcony Area : 8m²

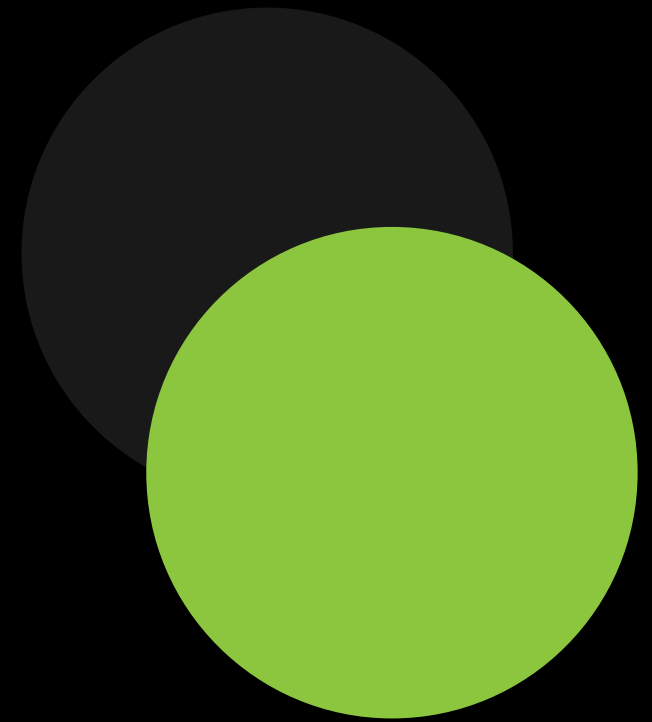
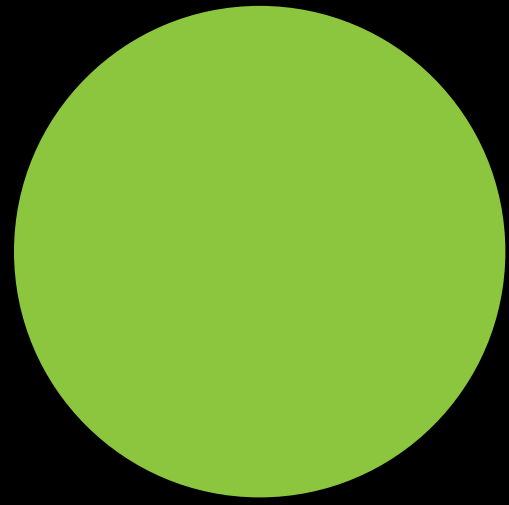
Total Area : 58.5m²



Disclaimer.

The documents provided are indicative only and subject to change without notice. Co-ordination with engineering disciplines and general design development may effect layouts. The user should make their own inquiries as to the accuracy of the information contained. Facade and Balcony locations indicative only. Please refer to overall level floor plans.





kodo

Apartment Type M

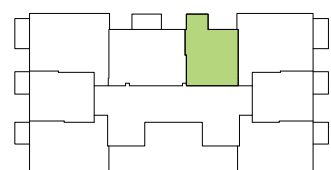
L06 - L28

1 Bedroom/1 Bathroom

Apartment Area : 52m²

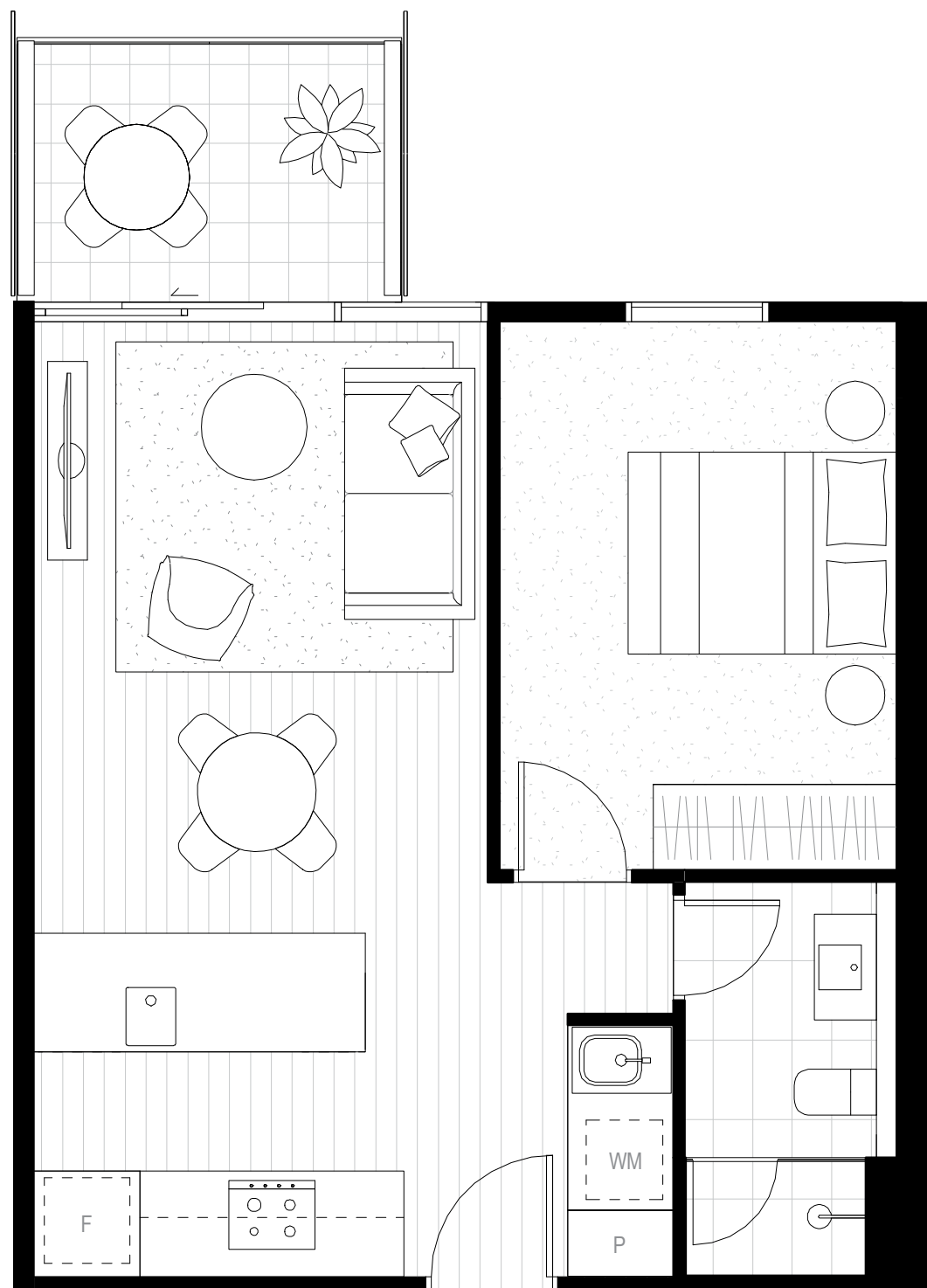
Balcony Area : 6m²

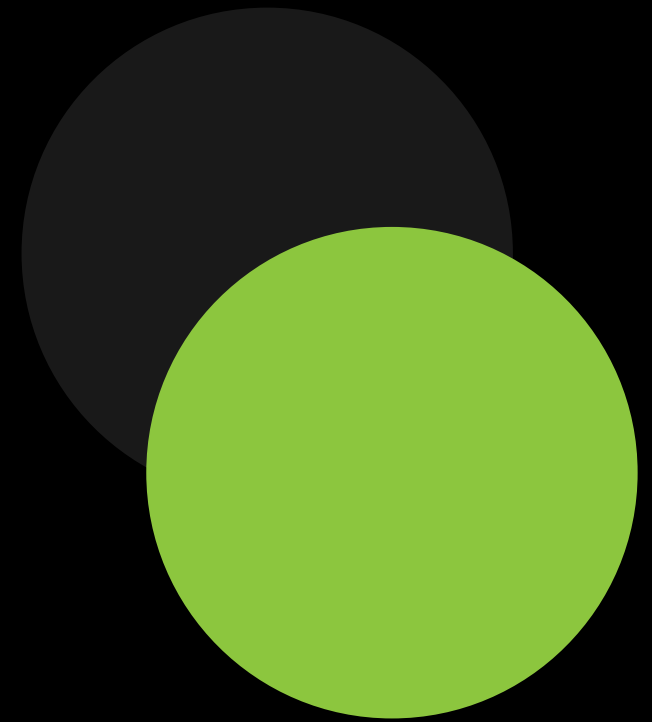
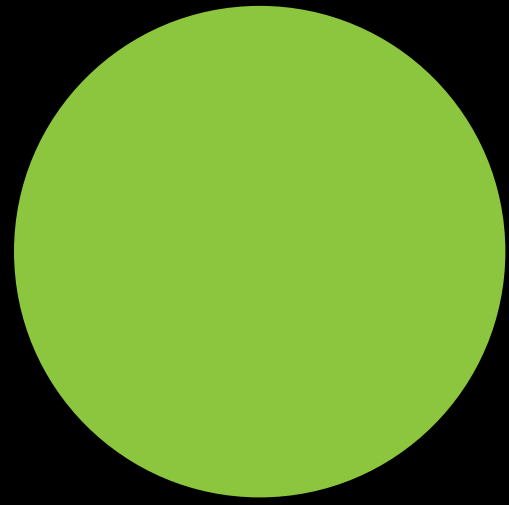
Total Area : 58m²



Disclaimer.

The documents provided are indicative only and subject to change without notice. Co-ordination with engineering disciplines and general design development may effect layouts. The user should make their own inquiries as to the accuracy of the information contained. Facade and Balcony locations indicative only. Please refer to overall level floor plans.





kodo

Apartment Type N

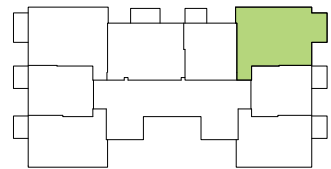
L06 – L28

2 Bedrooms/2 Bathrooms

Apartment Area : 81m²

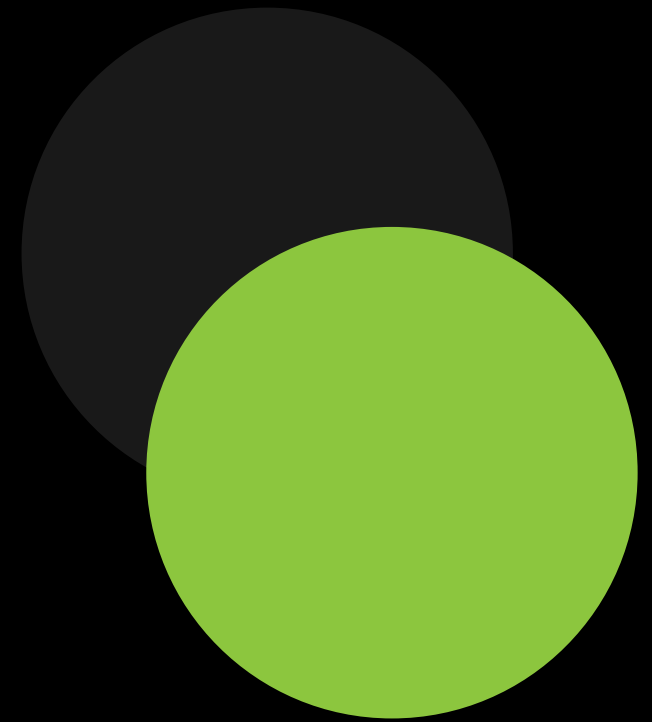
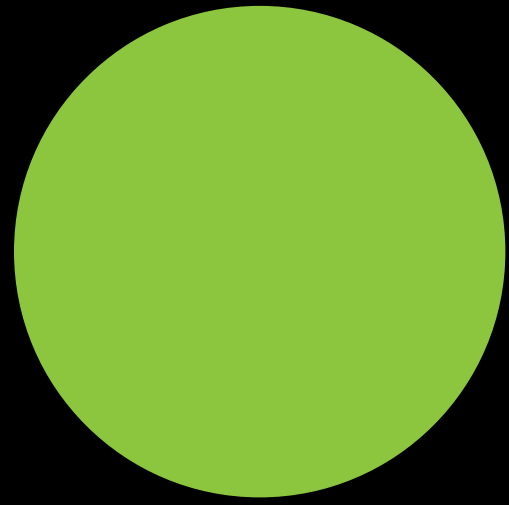
Balcony Area : 8m²

Total Area : 89m²



Disclaimer.
The documents provided are indicative only and subject to change without notice. Co-ordination with engineering disciplines and general design development may effect layouts. The user should make their own inquiries as to the accuracy of the information contained. Facade and Balcony locations indicative only. Please refer to overall level floor plans.





kodo

Apartment Type P

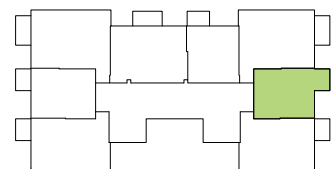
L06 - L28

1 Bedroom/1 Bathroom

Apartment Area : 53m²

Balcony Area : 6m²

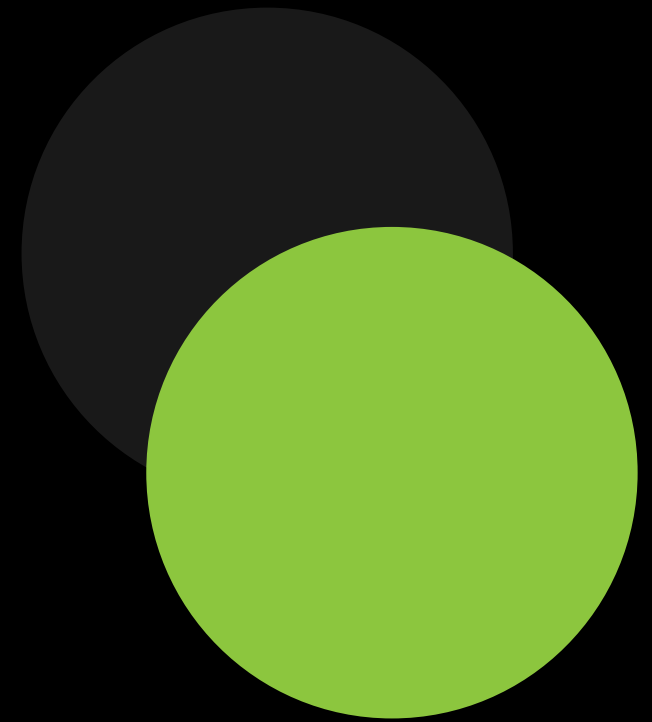
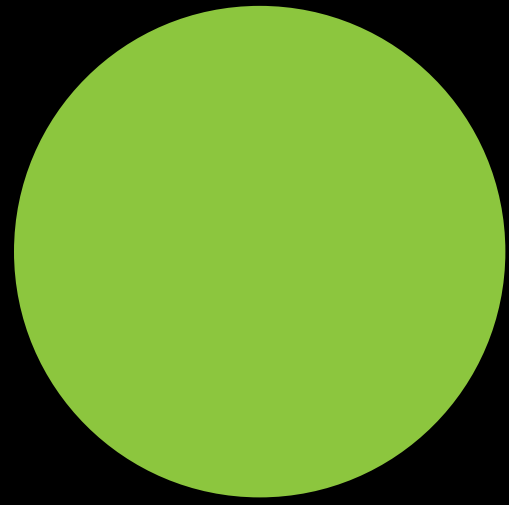
Total Area : 59m²



Disclaimer.

The documents provided are indicative only and subject to change without notice. Co-ordination with engineering disciplines and general design development may effect layouts. The user should make their own inquiries as to the accuracy of the information contained. Facade and Balcony locations indicative only. Please refer to overall level floor plans.





kodo

Apartment Type Q

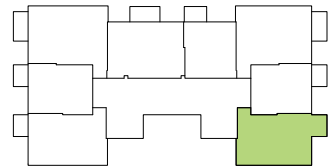
L06 – L28

2 Bedrooms/1 Bathroom

Apartment Area : 69m²

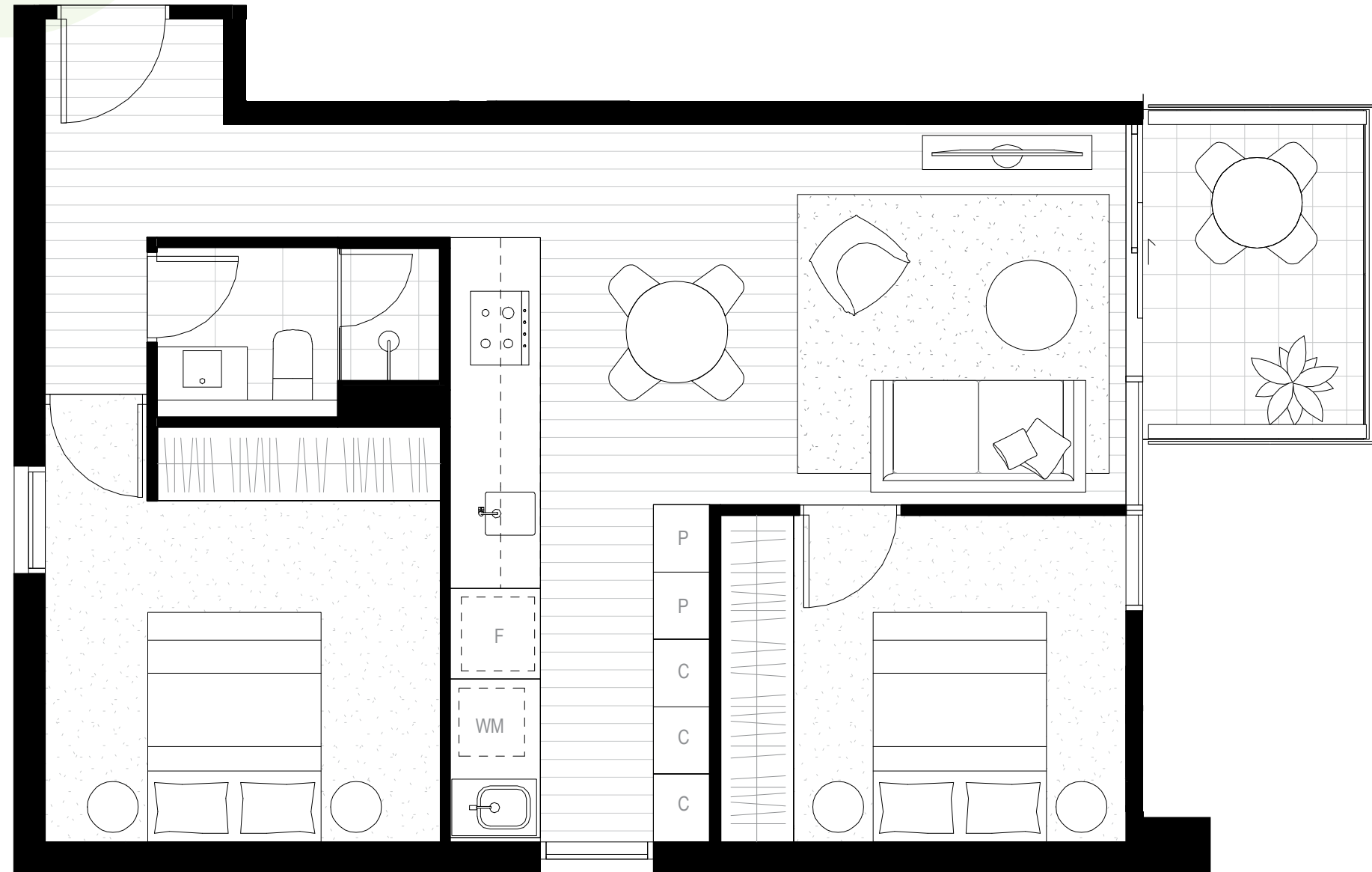
Balcony Area : 6m²

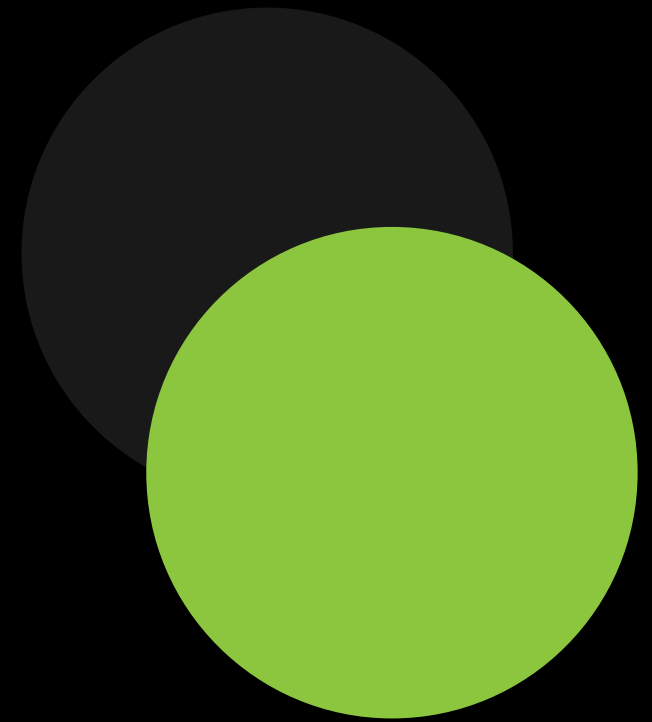
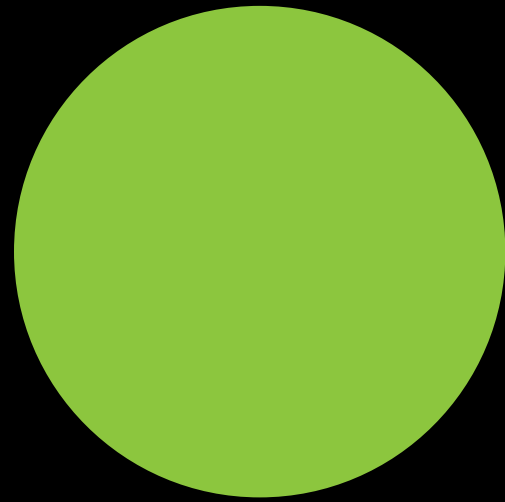
Total Area : 75m²



Disclaimer.

The documents provided are indicative only and subject to change without notice. Co-ordination with engineering disciplines and general design development may effect layouts. The user should make their own inquiries as to the accuracy of the information contained. Facade and Balcony locations indicative only. Please refer to overall level floor plans.





kodo

Apartment Type R

L25 - L28

3 Bedrooms/2 Bathrooms

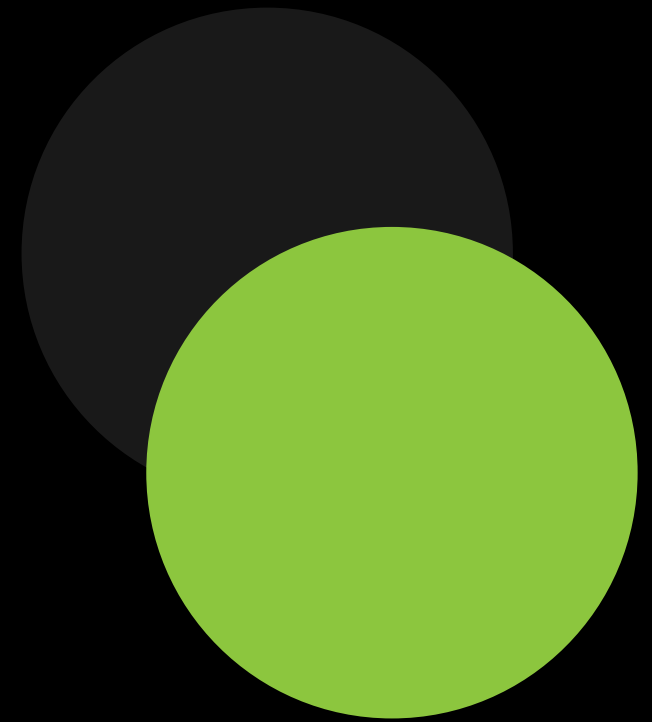
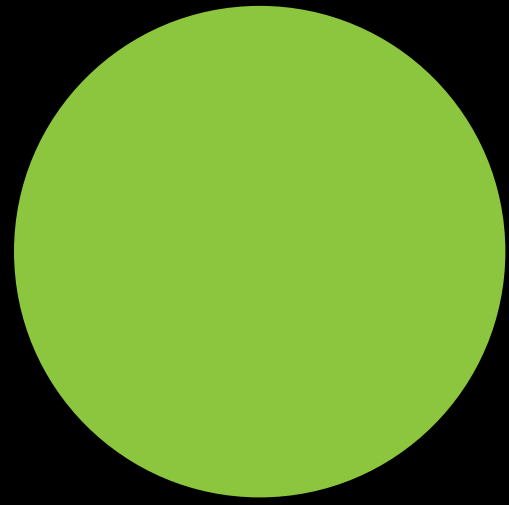
Apartment Area : 110.5m²

Balcony Area : 8m²

Total Area : 118.5m²



Disclaimer.
The documents provided are indicative only and subject to change without notice. Co-ordination with engineering disciplines and general design development may effect layouts. The user should make their own inquiries as to the accuracy of the information contained. Facade and Balcony locations indicative only. Please refer to overall level floor plans.



Kodo

Sub-Penthouse Type S

L29

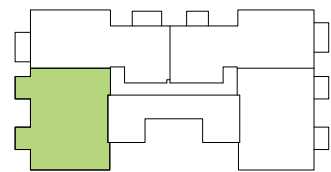
3 Bedrooms/2 Bathrooms

Apartment Area : 140.5m²

Balcony 1 Area : 6m²

Balcony 2 Area : 6m²

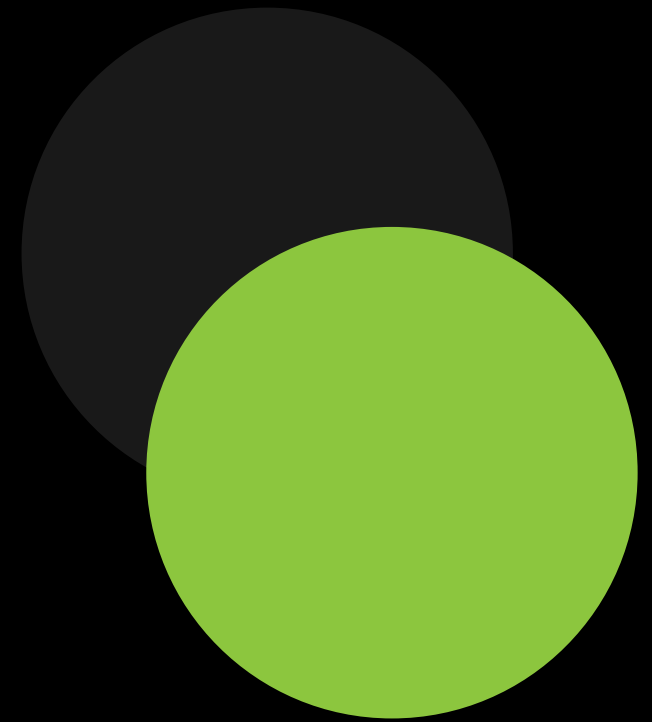
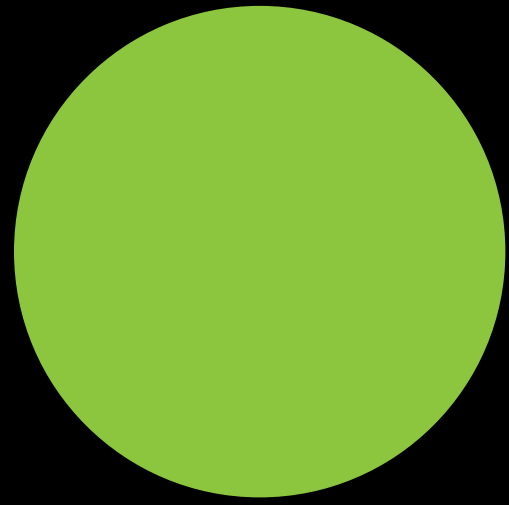
Total Area : 152.5m²



Disclaimer.

The documents provided are indicative only and subject to change without notice. Co-ordination with engineering disciplines and general design development may effect layouts. The user should make their own inquiries as to the accuracy of the information contained. Facade and Balcony locations indicative only. Please refer to overall level floor plans.





kodo

Sub-Penthouse Type T

L29

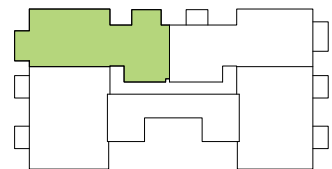
3 Bedrooms/2 Bathrooms

Apartment Area : 136.5m²

Balcony Area : 8m²

Balcony Area : 8m²

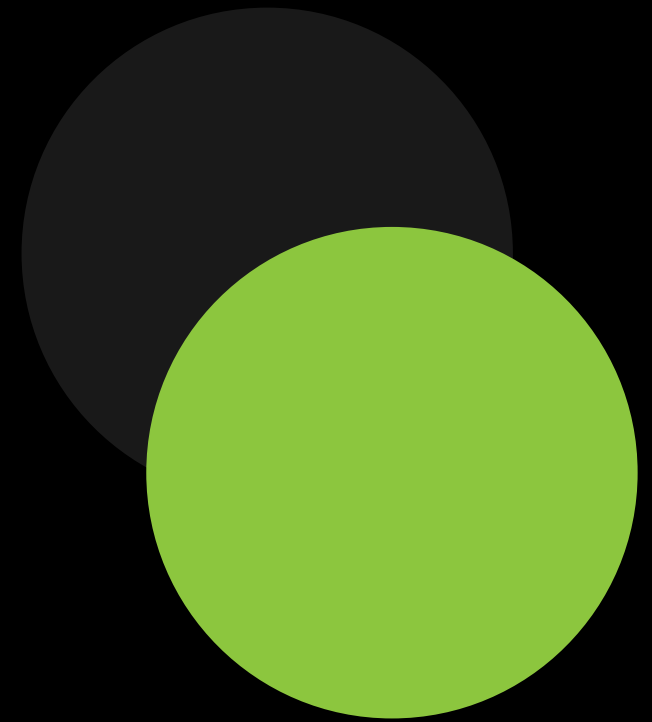
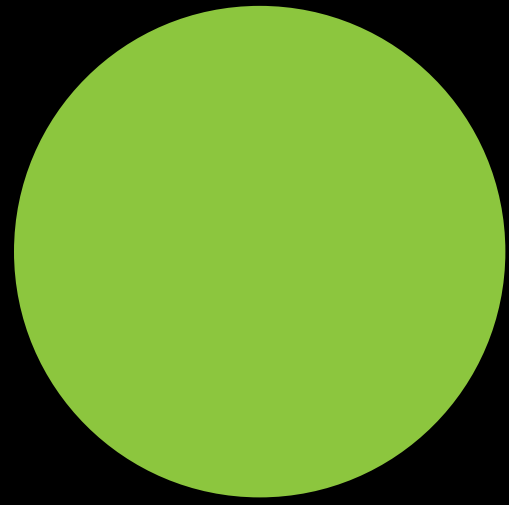
Total Area : 152.5m²



Disclaimer.

The documents provided are indicative only and subject to change without notice. Co-ordination with engineering disciplines and general design development may effect layouts. The user should make their own inquiries as to the accuracy of the information contained. Facade and Balcony locations indicative only. Please refer to overall level floor plans.





kodo

Sub-Penthouse Type U

L29

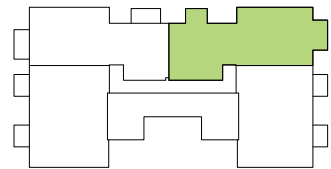
3 Bedrooms/2 Bathrooms

Apartment Area : 140.5m²

Balcony Area : 6m²

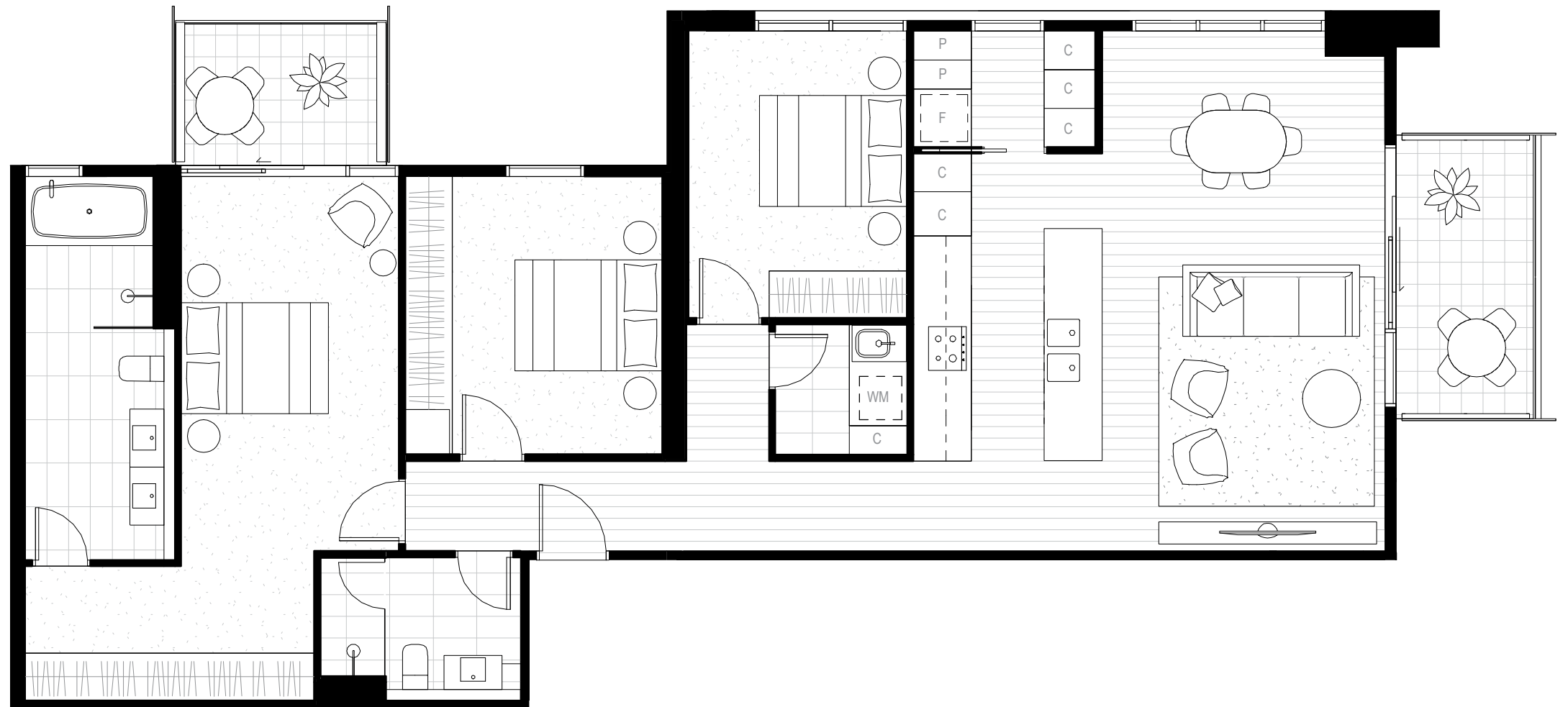
Balcony Area : 8m²

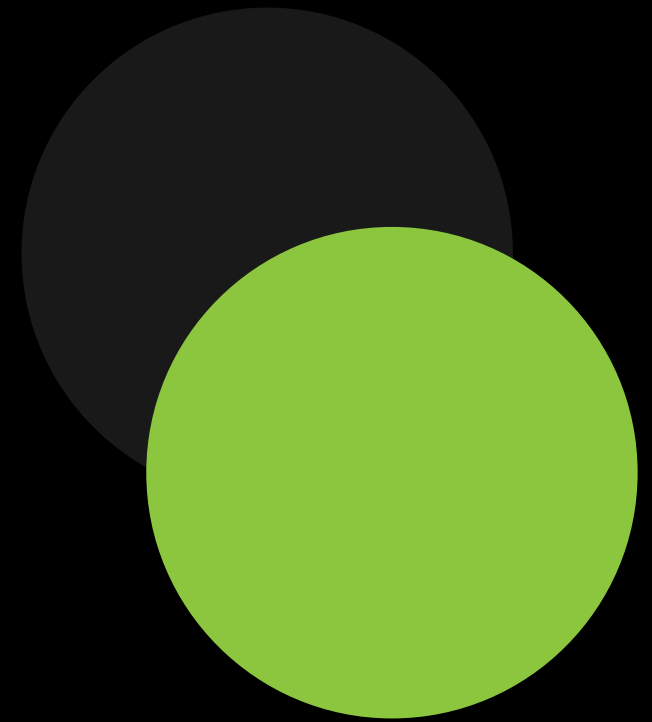
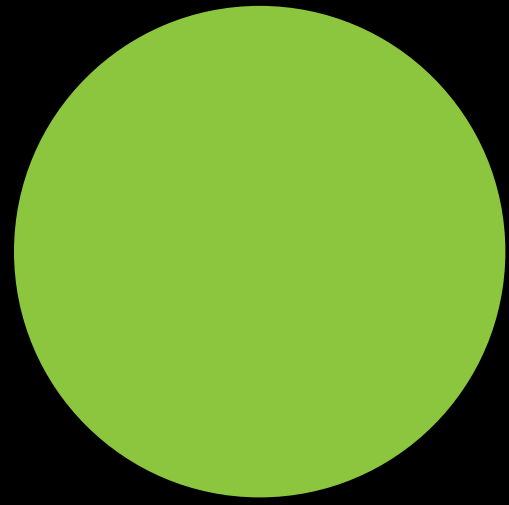
Total Area : 154.5m²



Disclaimer.

The documents provided are indicative only and subject to change without notice. Co-ordination with engineering disciplines and general design development may effect layouts. The user should make their own inquiries as to the accuracy of the information contained. Facade and Balcony locations indicative only. Please refer to overall level floor plans.





kodo

Sub-Penthouse Type V

L29

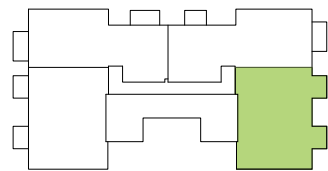
3 Bedrooms/2 Bathrooms

Apartment Area : 134m²

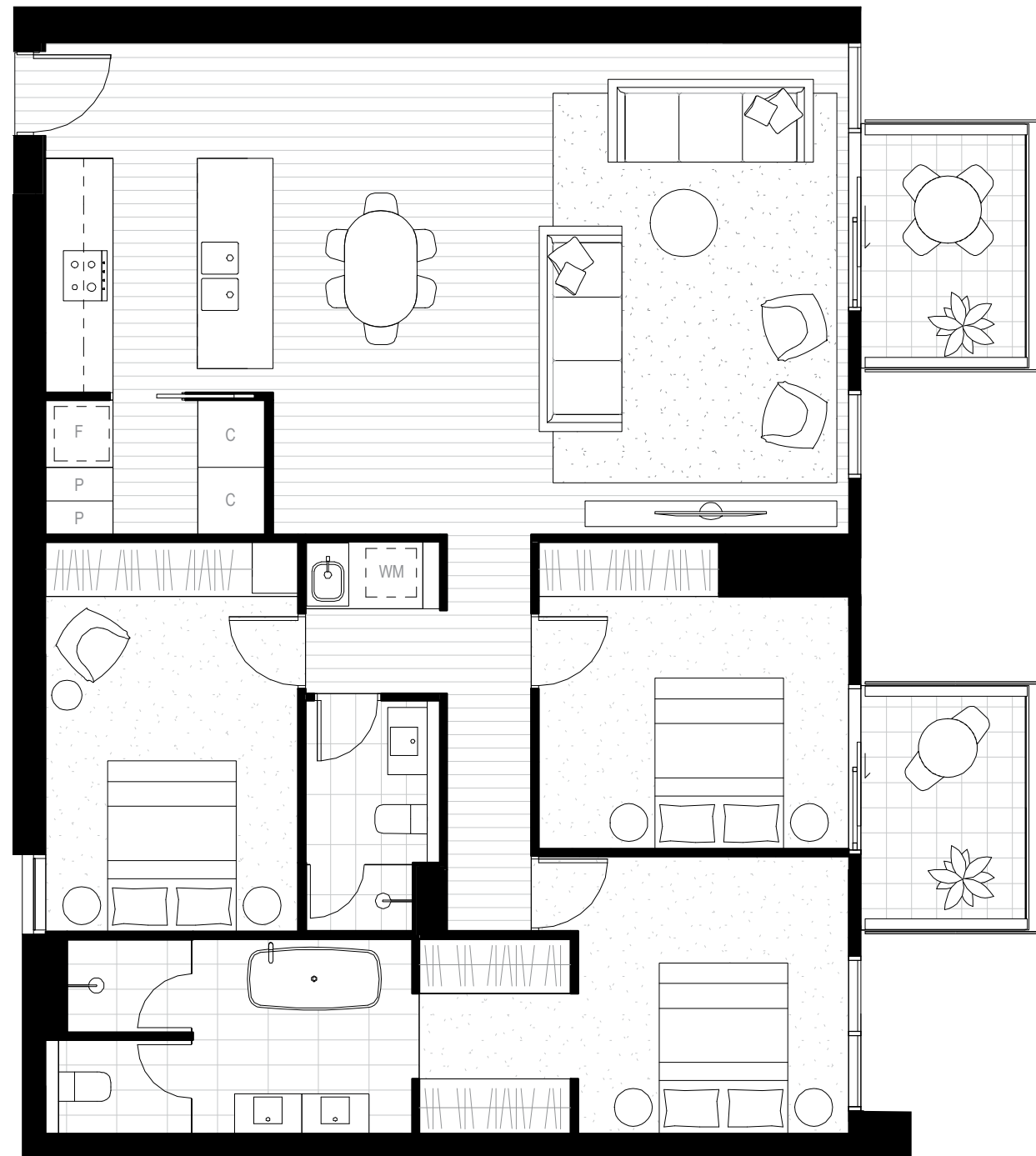
Balcony Area : 6m²

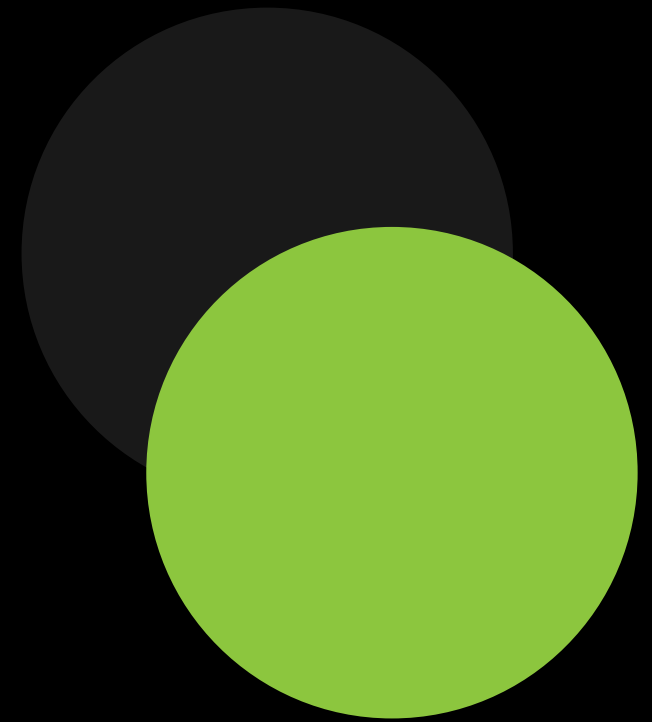
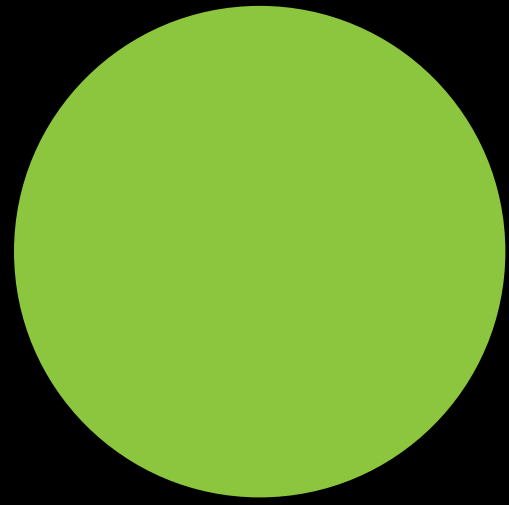
Balcony Area : 6m²

Total Area : 146m²



Disclaimer.
The documents provided are indicative only and subject to change without notice. Co-ordination with engineering disciplines and general design development may effect layouts. The user should make their own inquiries as to the accuracy of the information contained. Facade and Balcony locations indicative only. Please refer to overall level floor plans.

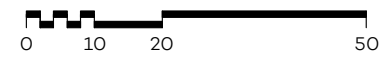
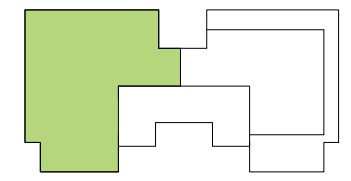




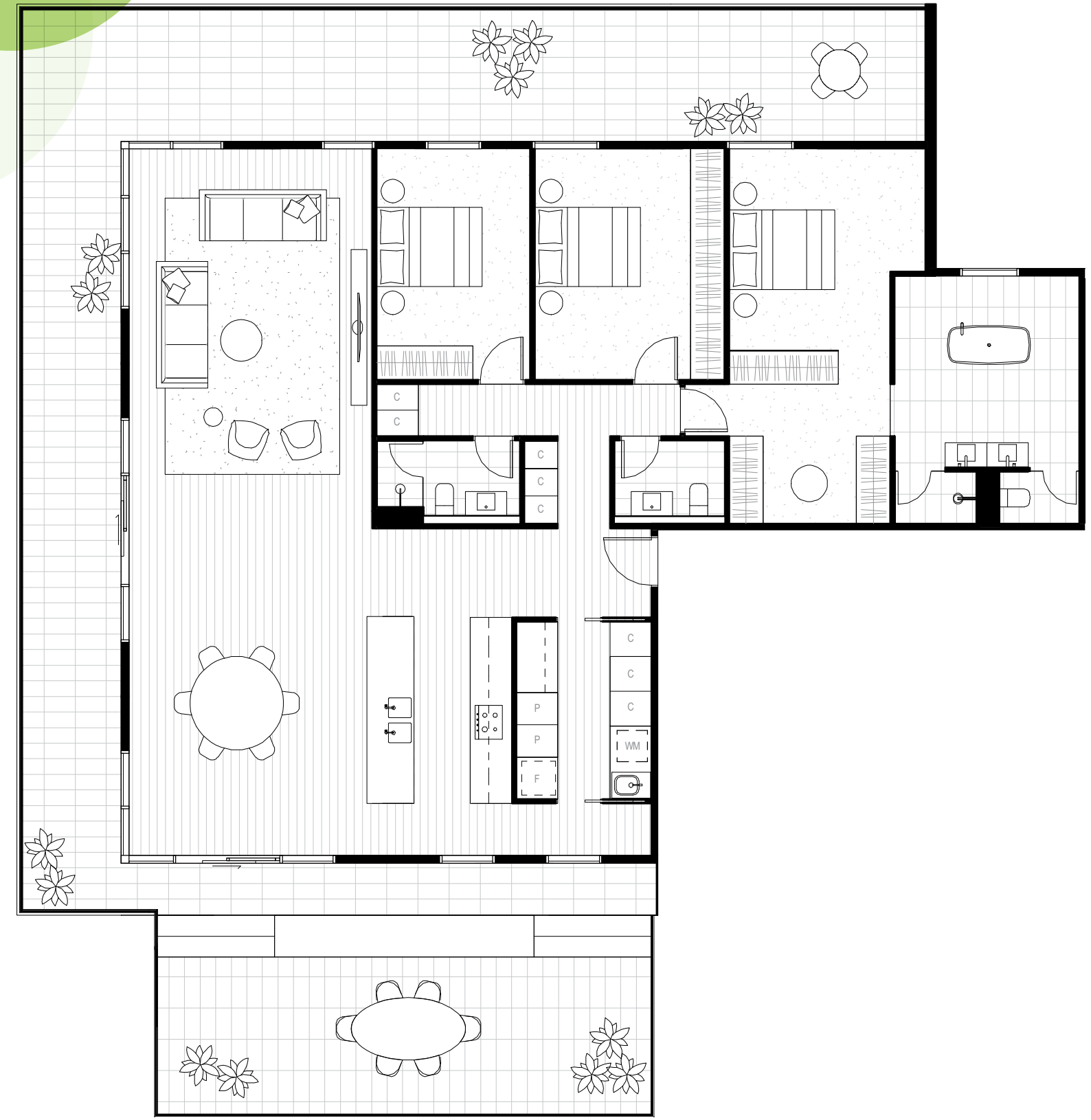
kodo

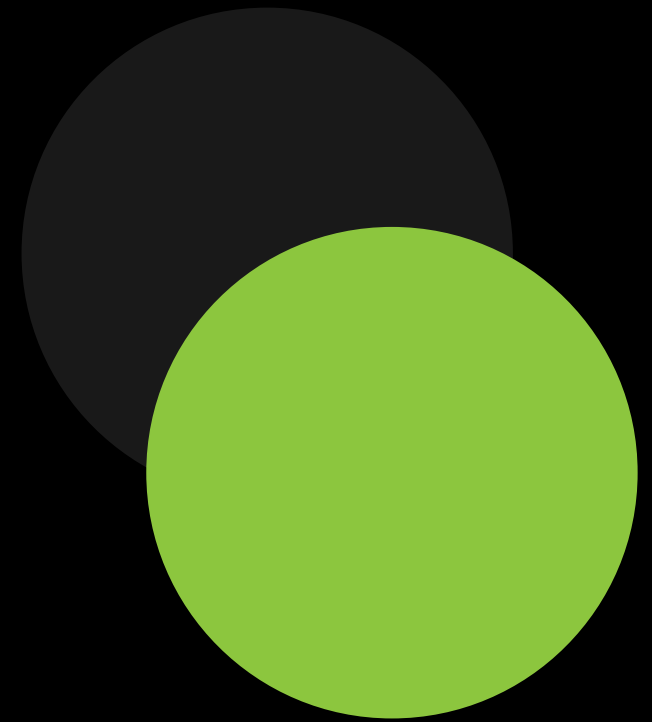
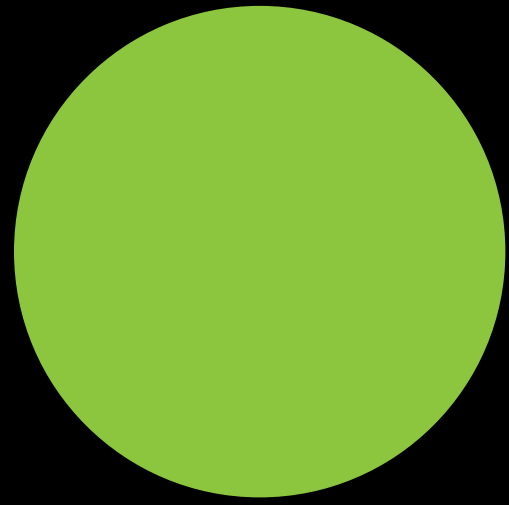
Penthouse Type W

- L30
- 3 Bedrooms/3 Bathrooms
- Apartment Area : 198m²
- Balcony Area : 127.5m²
- Total Area : 325.5m²



Disclaimer.
The documents provided are indicative only and subject to change without notice. Co-ordination with engineering disciplines and general design development may effect layouts. The user should make their own inquiries as to the accuracy of the information contained. Facade and Balcony locations indicative only. Please refer to overall level floor plans.





kodo

Penthouse Type X

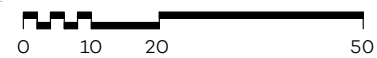
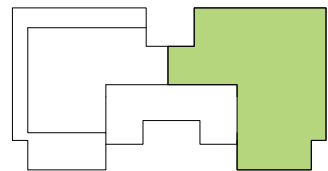
L30

3 Bedrooms/3 Bathrooms

Apartment Area : 196.5m²

Balcony Area : 124.0m²

Total Area : 320.5m²



Disclaimer.

The documents provided are indicative only and subject to change without notice. Co-ordination with engineering disciplines and general design development may effect layouts. The user should make their own inquiries as to the accuracy of the information contained. Facade and Balcony locations indicative only. Please refer to overall level floor plans.

