

EAST BOUNDARY ROAD

CENTRE ROAD

# CENTREPIECE

Residences

## Basement Level 1

Note: All are as shown are approximate. The information contained here in has been obtained from sources we believe to be reliable and therefore have no reason to doubt it's accuracy. The vendor and it's agent will not be responsible for any error or mis-description which may appear. Prospective purchasers or leasees are therefore advised to make whatever investigations they deem necessary.







# CENTREPIECE

*Residences*

## Ground Level

■ 1 Bedroom  
 ■ 2 Bedroom  
 ■ 3 Bedroom



Note: All as shown are approximate. The information contained here in has been obtained from sources we believe to be reliable and therefore have no reason to doubt it's accuracy. The vendor and it's agent will not be responsible for any error or mis-description which may appear. Prospective purchasers or leasees are therefore advised to make whatever investigations they deem necessary.

EAST BOUNDARY ROAD



CENTRE ROAD

# CENTREPIECE

Residences

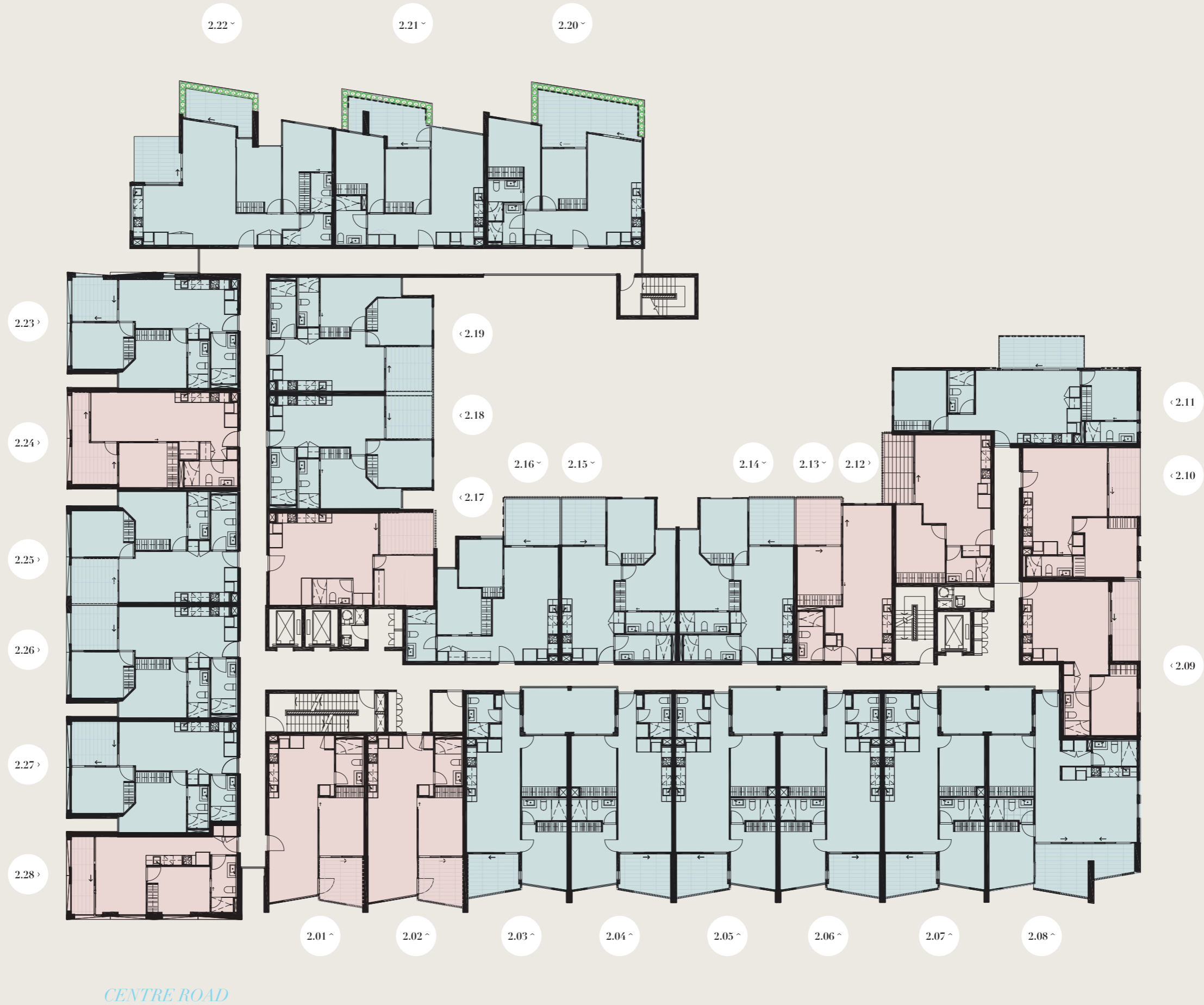
## Level 1

Note: All are as shown are approximate. The information contained here in has been obtained from sources we believe to be reliable and therefore have no reason to doubt it's accuracy. The vendor and it's agent will not be responsible for any error or mis-description which may appear. Prospective purchasers or leasees are therefore advised to make whatever investigations they deem necessary.

1 Bedroom 2 Bedroom 3 Bedroom



EAST BOUNDARY ROAD



CENTRE ROAD

# CENTREPIECE

Residences

## Level 2

1 Bedroom 2 Bedroom 3 Bedroom

Note: All are as shown are approximate. The information contained here in has been obtained from sources we believe to be reliable and therefore have no reason to doubt it's accuracy. The vendor and it's agent will not be responsible for any error or mis-description which may appear. Prospective purchasers or leasees are therefore advised to make whatever investigations they deem necessary.



EAST BOUNDARY ROAD

3.06 >

3.07 >

3.08 >

3.09 >

3.10 >

< 3.05

< 3.04

< 3.03

< 3.01

CENTRE ROAD

# CENTREPIECE

Residences

## Level 3

1 Bedroom 2 Bedroom 3 Bedroom



Note: All are as shown are approximate. The information contained here in has been obtained from sources we believe to be reliable and therefore have no reason to doubt it's accuracy. The vendor and it's agent will not be responsible for any error or mis-description which may appear. Prospective purchasers or leasees are therefore advised to make whatever investigations they deem necessary.

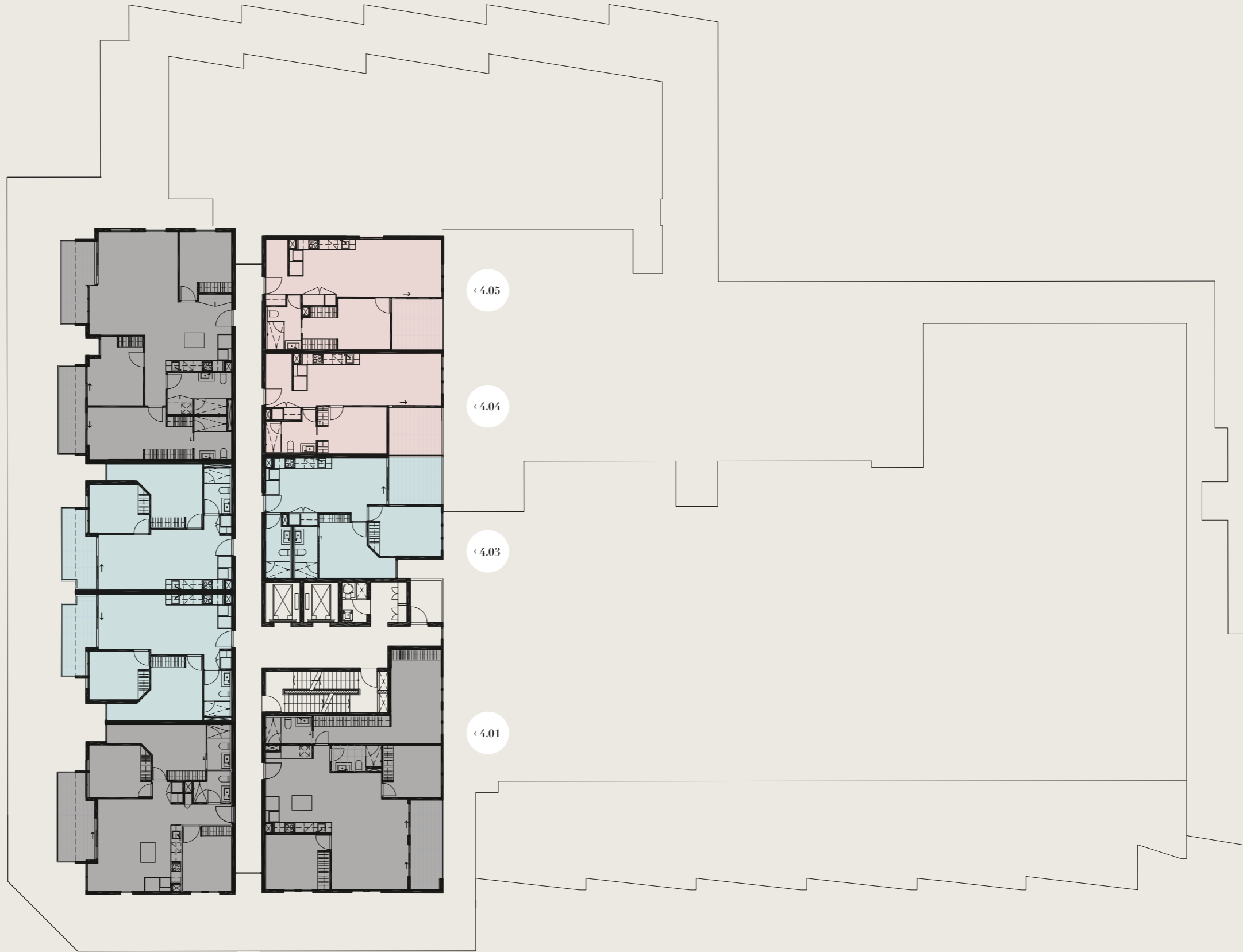
EAST BOUNDARY ROAD

4.06 >

4.08 >

4.09 >

4.10 >



CENTRE ROAD

# CENTREPIECE

Residences

## Level 4

1 Bedroom 2 Bedroom 3 Bedroom



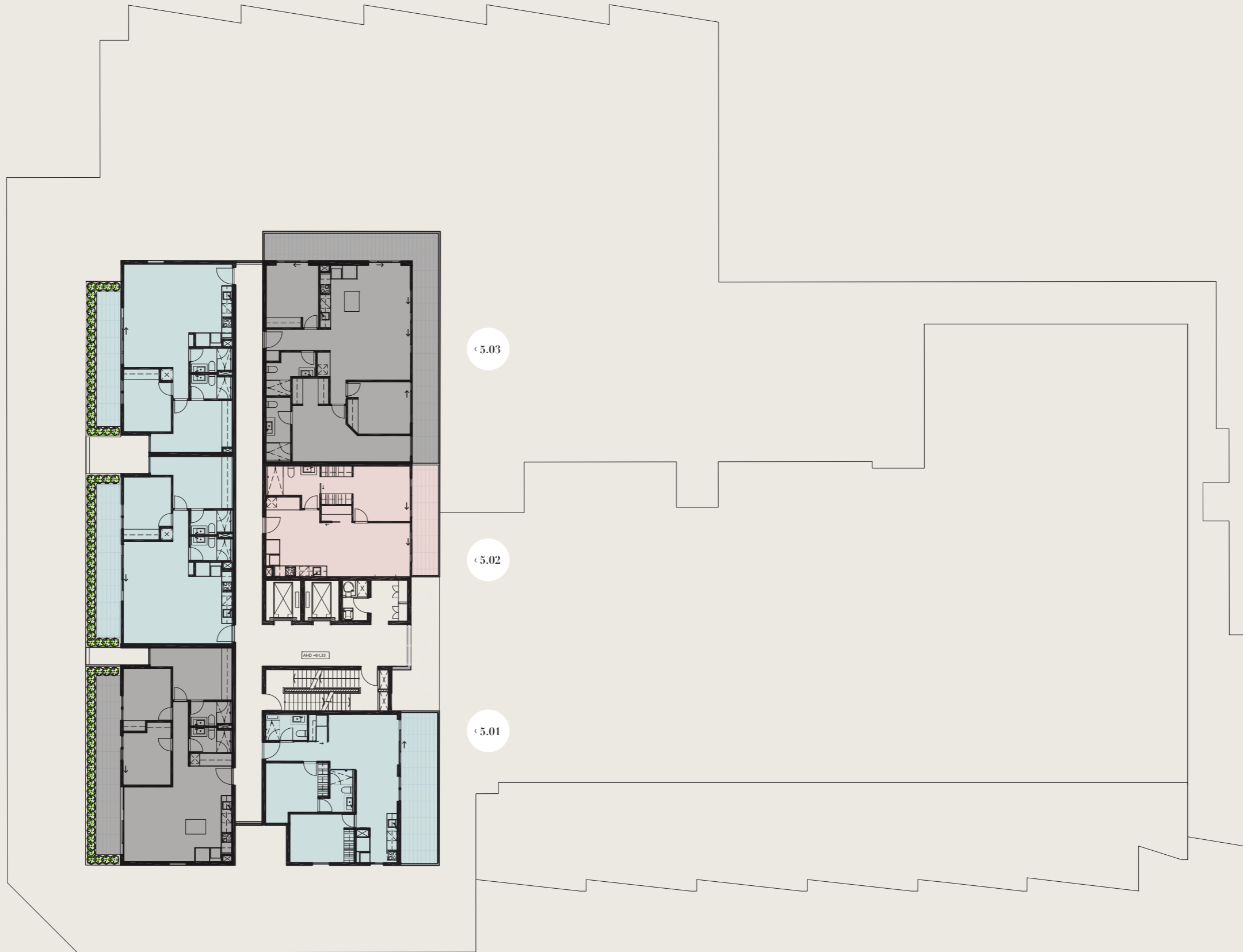
Note. All are as shown are approximate. The information contained here in has been obtained from sources we believe to be reliable and therefore have no reason to doubt it's accuracy. The vendor and it's agent will not be responsible for any error or mis-description which may appear. Prospective purchasers or leasees are therefore advised to make whatever investigations they deem necessary.

EAST BOUNDARY ROAD

5.05 >

5.06 >

5.07 >



< 5.03

< 5.02

< 5.01

CENTRE ROAD

# CENTREPIECE

Residences

## Level 5

1 Bedroom 2 Bedroom 3 Bedroom



Note. All are as shown are approximate. The information contained here in has been obtained from sources we believe to be reliable and therefore have no reason to doubt it's accuracy. The vendor and it's agent will not be responsible for any error or mis-description which may appear. Prospective purchasers or leasees are therefore advised to make whatever investigations they deem necessary.