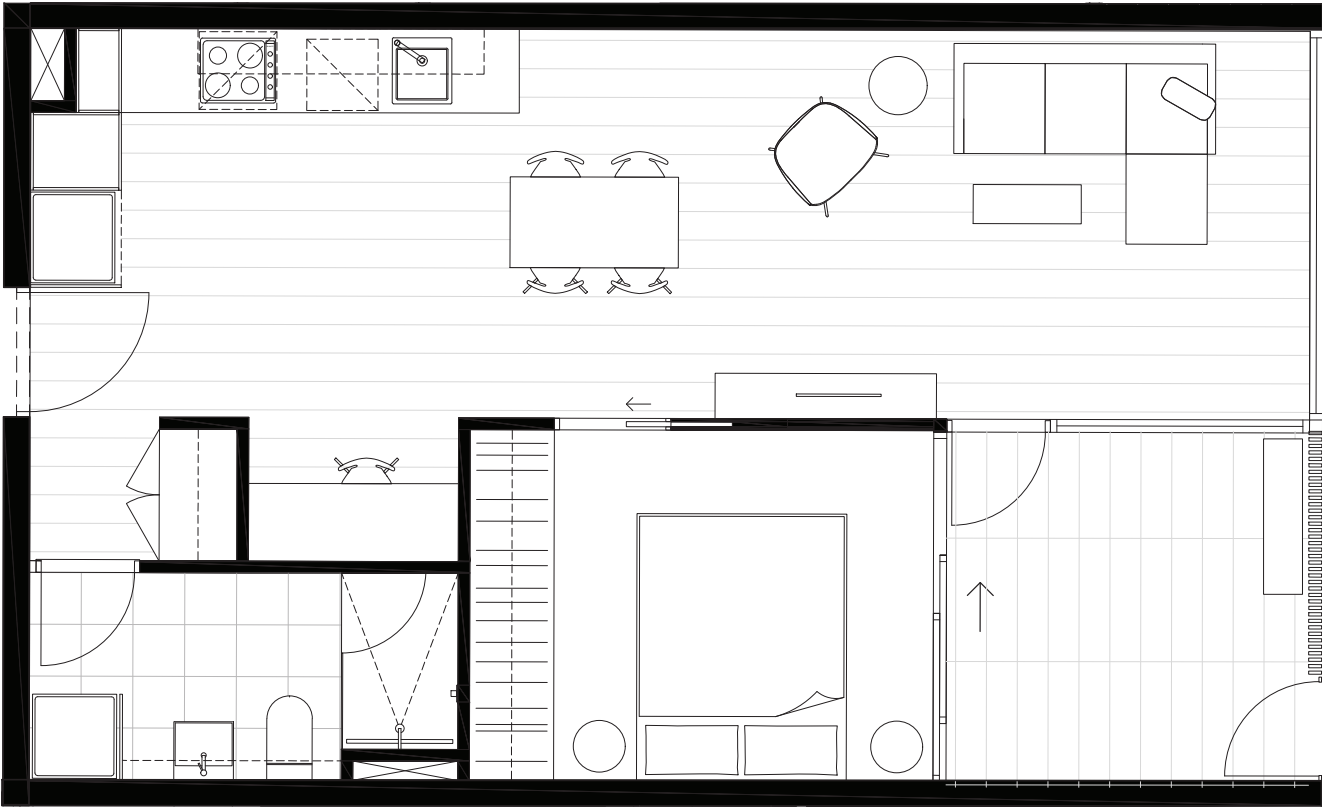


*ONE
BEDROOM*



CENTREPIECE

Residences



APARTMENT

G.13

BEDROOM(S) BATHROOM(S)

1+S 1

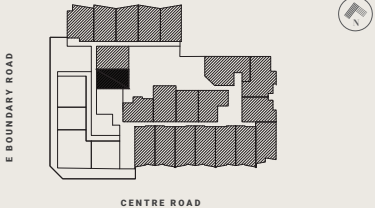
INTERNAL EXTERNAL

53 m² 8 m²

TOTAL

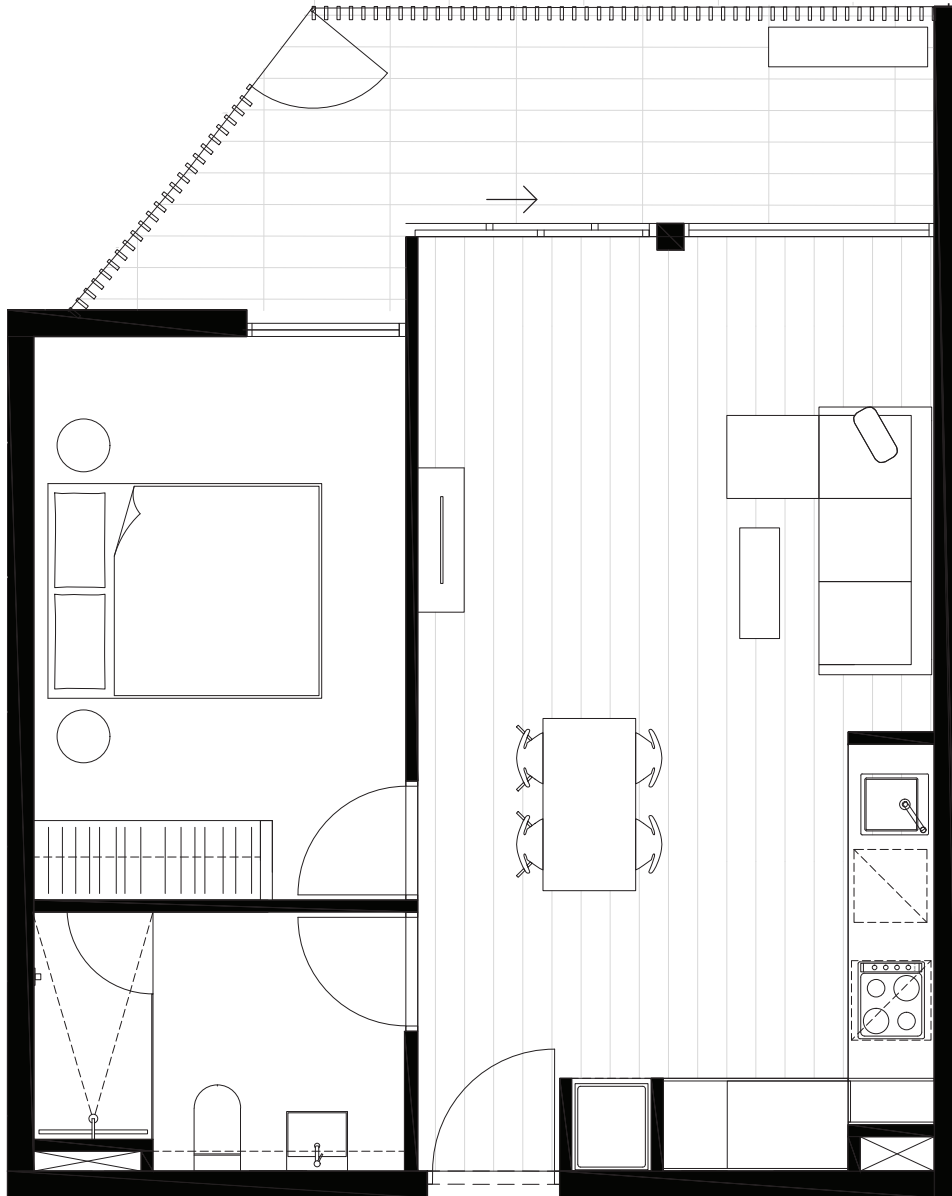
61.0 m²

GROUND LEVEL KEY PLAN



DISCLAIMER

The information provided is illustrative only and may not be relied upon. In particular the final area dimensions of any residence sold will be determined by the contract of sale and may differ from the depicted. Whilst every effort is made to provide accurate and complete information, the developer does not warrant or represent that the information in this floor plan is free from errors or omissions or is suitable for your intended use. All apartment and balcony areas are calculated as Gross Floor Area in accordance with the Method of Measurement for Residential Property as published by the Property Council of Australia. Subject to any terms implied by law which cannot be excluded, the developer accepts no responsibility for any loss, damage, cost or expense (wether direct or indirect) by you as a result of any error, omission or misrepresentation in information. All information is subject to change without notice.



CENTREPIECE

Residences

APARTMENT

G.14

BEDROOM(S) BATHROOM(S)

1

1

INTERNAL

EXTERNAL

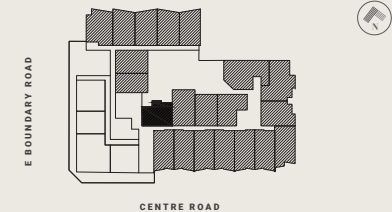
50 m²

10 m²

TOTAL

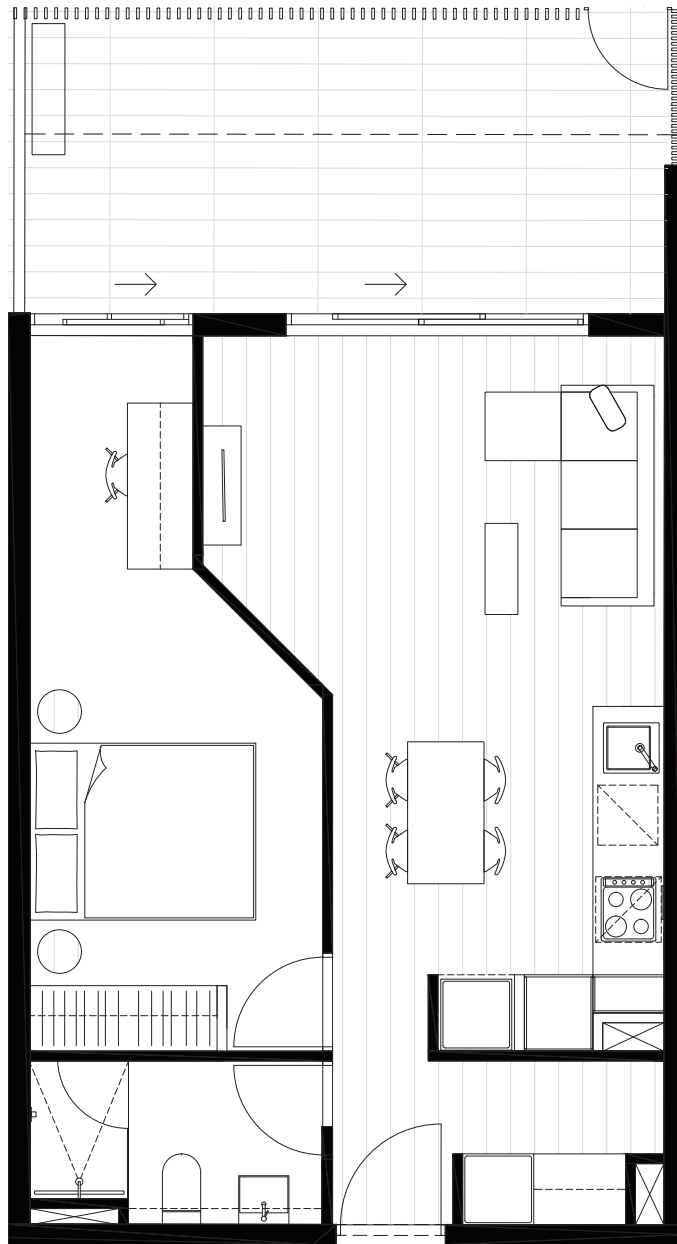
60.5 m²

GROUND LEVEL KEY PLAN



DISCLAIMER

The information provided is illustrative only and may not be relied upon. In particular the final area dimensions of any residence sold will be determined by the contract of sale and may differ from the depicted. Whilst every effort is made to provide accurate and complete information, the developer does not warrant or represent that the information in this floor plan is free from errors or omissions or is suitable for your intended use. All apartment and balcony areas are calculated as Gross Floor Area in accordance with the Method of Measurement for Residential Property as published by the Property Council of Australia. Subject to any terms implied by law which cannot be excluded, the developer accepts no responsibility for any loss, damage, cost or expense (wether direct or indirect) by you as a result of any error, omission or misrepresentation in information. All information is subject to change without notice.



CENTREPIECE

Residences

APARTMENT

G.16

BEDROOM(S)

1+S

BATHROOM(S)

1

INTERNAL

51 m²

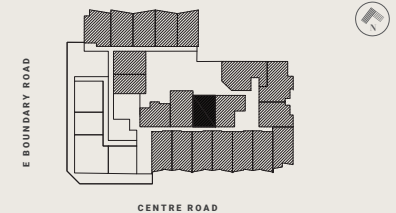
EXTERNAL

17 m²

TOTAL

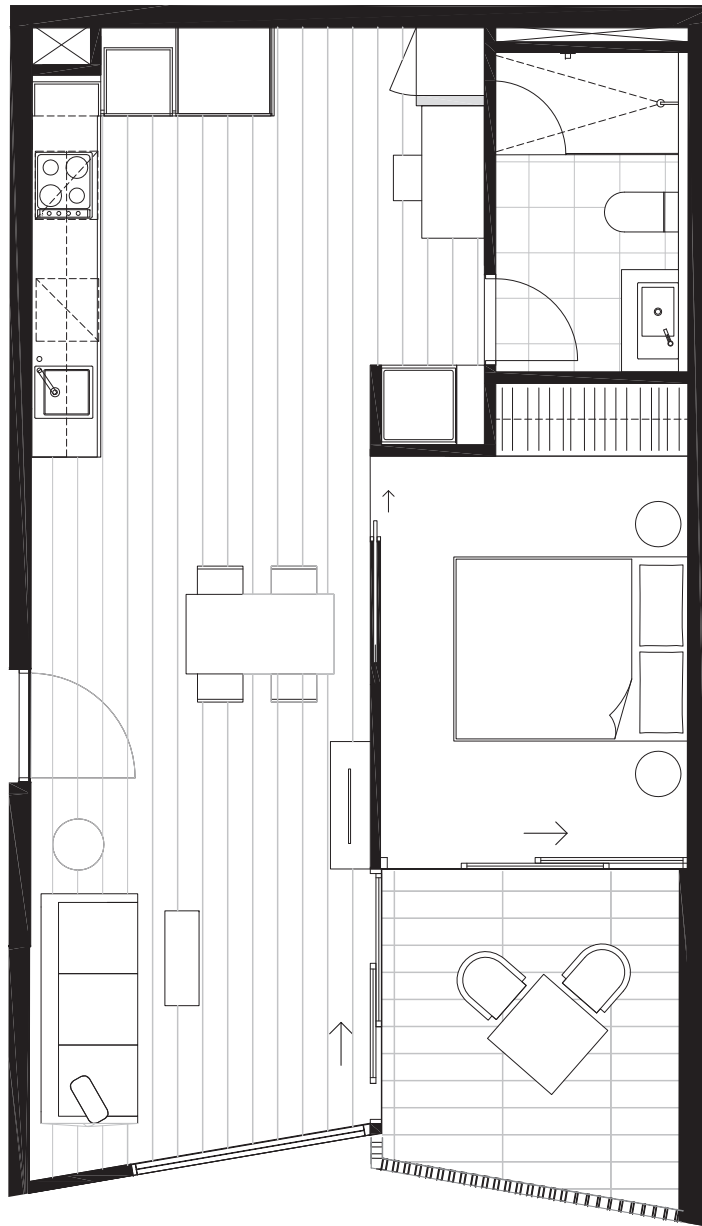
68.1 m²

GROUND LEVEL KEY PLAN



DISCLAIMER

The information provided is illustrative only and may not be relied upon. In particular the final area dimensions of any residence sold will be determined by the contract of sale and may differ from the depicted. Whilst every effort is made to provide accurate and complete information, the developer does not warrant or represent that the information in this floor plan is free from errors or omissions or is suitable for your intended use. All apartment and balcony areas are calculated as Gross Floor Area in accordance with the Method of Measurement for Residential Property as published by the Property Council of Australia. Subject to any terms implied by law which cannot be excluded, the developer accepts no responsibility for any loss, damage, cost or expense (wether direct or indirect) by you as a result of any error, omission or misrepresentation in information. All information is subject to change without notice.



CENTREPIECE

Residences

APARTMENT

1.01

BEDROOM(S)

BATHROOM(S)

1+S

1

INTERNAL

EXTERNAL

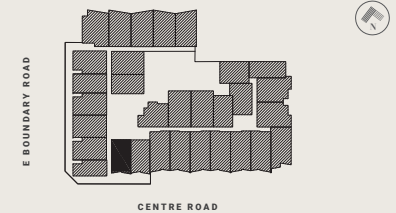
55 m²

8 m²

TOTAL

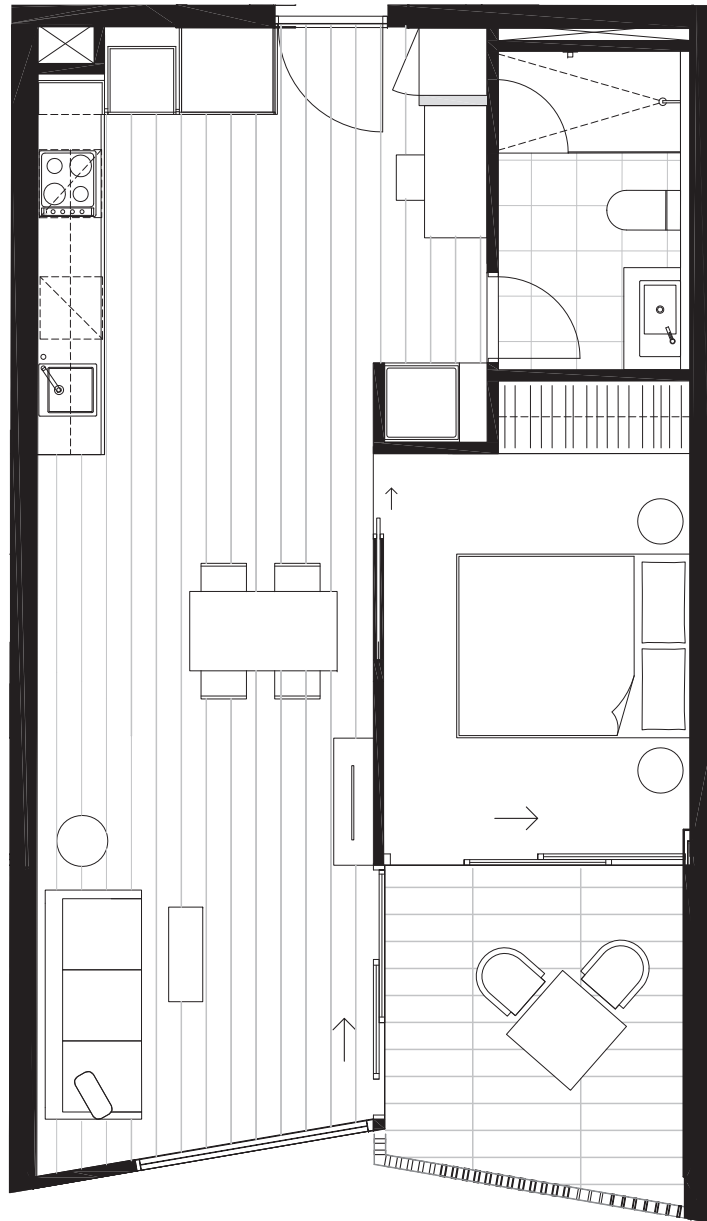
63.4 m²

LEVEL ONE KEY PLAN



DISCLAIMER

The information provided is illustrative only and may not be relied upon. In particular the final area dimensions of any residence sold will be determined by the contract of sale and may differ from the depicted. Whilst every effort is made to provide accurate and complete information, the developer does not warrant or represent that the information in this floor plan is free from errors or omissions or is suitable for your intended use. All apartment and balcony areas are calculated as Gross Floor Area in accordance with the Method of Measurement for Residential Property as published by the Property Council of Australia. Subject to any terms implied by law which cannot be excluded, the developer accepts no responsibility for any loss, damage, cost or expense (wether direct or indirect) by you as a result of any error, omission or misrepresentation in information. All information is subject to change without notice.



CENTREPIECE

Residences

APARTMENT

1.02

BEDROOM(S)

1+S

BATHROOM(S)

1

INTERNAL

54 m²

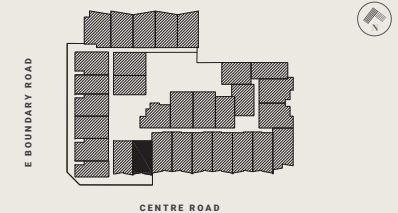
EXTERNAL

8 m²

TOTAL

62.0 m²

LEVEL ONE KEY PLAN



DISCLAIMER

The information provided is illustrative only and may not be relied upon. In particular the final area dimensions of any residence sold will be determined by the contract of sale and may differ from the depicted. Whilst every effort is made to provide accurate and complete information, the developer does not warrant or represent that the information in this floor plan is free from errors or omissions or is suitable for your intended use. All apartment and balcony areas are calculated as Gross Floor Area in accordance with the Method of Measurement for Residential Property as published by the Property Council of Australia. Subject to any terms implied by law which cannot be excluded, the developer accepts no responsibility for any loss, damage, cost or expense (wether direct or indirect) by you as a result of any error, omission or misrepresentation in information. All information is subject to change without notice.

CENTREPIECE

Residences

APARTMENT

1.12

BEDROOM(S)

1

BATHROOM(S)

1

INTERNAL

51 m²

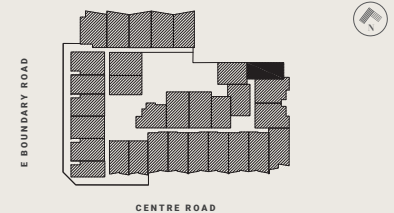
EXTERNAL

8 m²

TOTAL

58.8 m²

LEVEL ONE KEY PLAN



DISCLAIMER

The information provided is illustrative only and may not be relied upon. In particular the final area dimensions of any residence sold will be determined by the contract of sale and may differ from the depicted. Whilst every effort is made to provide accurate and complete information, the developer does not warrant or represent that the information in this floor plan is free from errors or omissions or is suitable for your intended use. All apartment and balcony areas are calculated as Gross Floor Area in accordance with the Method of Measurement for Residential Property as published by the Property Council of Australia. Subject to any terms implied by law which cannot be excluded, the developer accepts no responsibility for any loss, damage, cost or expense (wether direct or indirect) by you as a result of any error, omission or misrepresentation in information. All information is subject to change without notice.

CENTREPIECE

Residences



APARTMENT

1.13

BEDROOM(S)

1

BATHROOM(S)

1

INTERNAL

49 m²

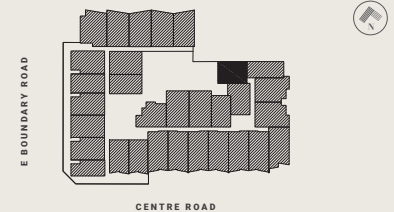
EXTERNAL

9 m²

TOTAL

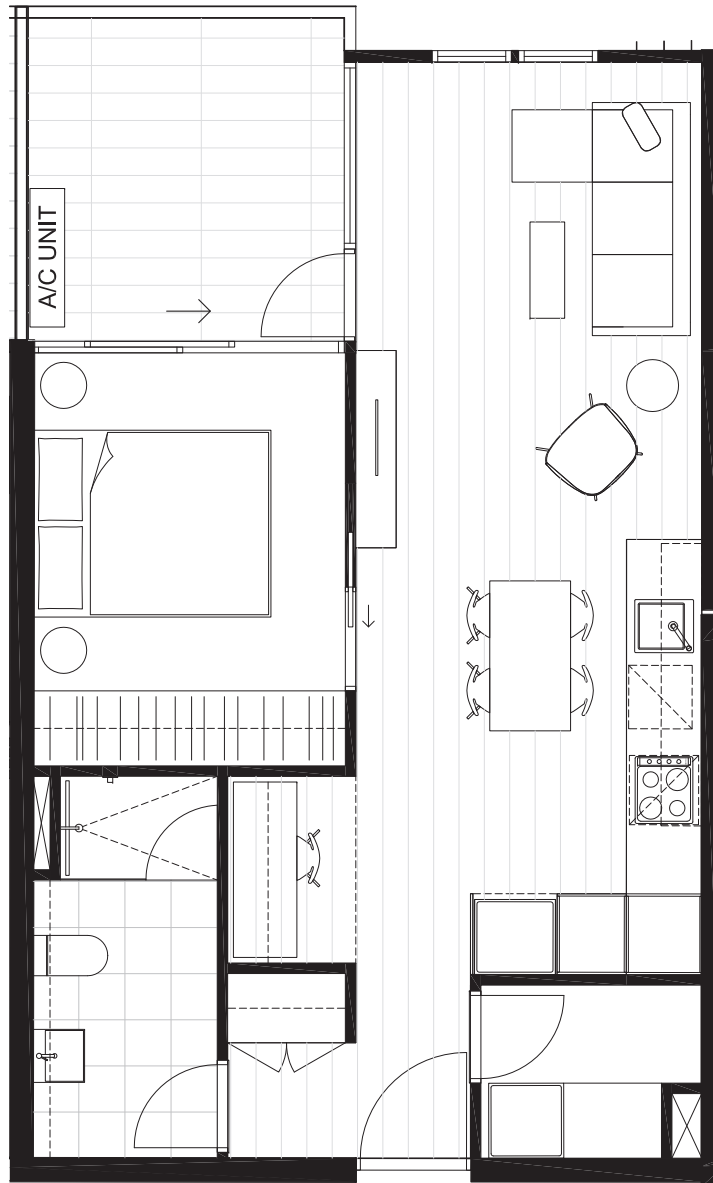
58.2 m²

LEVEL ONE KEY PLAN



DISCLAIMER

The information provided is illustrative only and may not be relied upon. In particular the final area dimensions of any residence sold will be determined by the contract of sale and may differ from the depicted. Whilst every effort is made to provide accurate and complete information, the developer does not warrant or represent that the information in this floor plan is free from errors or omissions or is suitable for your intended use. All apartment and balcony areas are calculated as Gross Floor Area in accordance with the Method of Measurement for Residential Property as published by the Property Council of Australia. Subject to any terms implied by law which cannot be excluded, the developer accepts no responsibility for any loss, damage, cost or expense (wether direct or indirect) by you as a result of any error, omission or misrepresentation in information. All information is subject to change without notice.



CENTREPIECE

Residences

APARTMENT

1.14

BEDROOM(S)

1

BATHROOM(S)

1

INTERNAL

52 m²

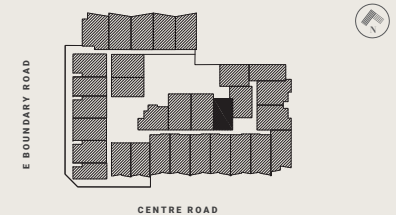
EXTERNAL

8 m²

TOTAL

59.9 m²

LEVEL ONE KEY PLAN



DISCLAIMER

The information provided is illustrative only and may not be relied upon. In particular the final area dimensions of any residence sold will be determined by the contract of sale and may differ from the depicted. Whilst every effort is made to provide accurate and complete information, the developer does not warrant or represent that the information in this floor plan is free from errors or omissions or is suitable for your intended use. All apartment and balcony areas are calculated as Gross Floor Area in accordance with the Method of Measurement for Residential Property as published by the Property Council of Australia. Subject to any terms implied by law which cannot be excluded, the developer accepts no responsibility for any loss, damage, cost or expense (wether direct or indirect) by you as a result of any error, omission or misrepresentation in information. All information is subject to change without notice.

CENTREPIECE

Residences

APARTMENT

1.18

BEDROOM(S)

1+S

BATHROOM(S)

1

INTERNAL

53 m²

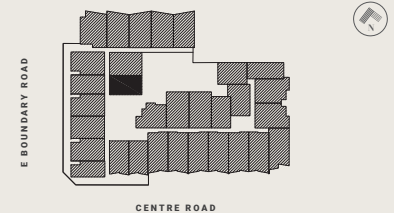
EXTERNAL

8 m²

TOTAL

61.0 m²

LEVEL ONE KEY PLAN



DISCLAIMER

The information provided is illustrative only and may not be relied upon. In particular the final area dimensions of any residence sold will be determined by the contract of sale and may differ from the depicted. Whilst every effort is made to provide accurate and complete information, the developer does not warrant or represent that the information in this floor plan is free from errors or omissions or is suitable for your intended use. All apartment and balcony areas are calculated as Gross Floor Area in accordance with the Method of Measurement for Residential Property as published by the Property Council of Australia. Subject to any terms implied by law which cannot be excluded, the developer accepts no responsibility for any loss, damage, cost or expense (wether direct or indirect) by you as a result of any error, omission or misrepresentation in information. All information is subject to change without notice.



CENTREPIECE

Residences

APARTMENT

1.26

BEDROOM(S)

1+S

BATHROOM(S)

1

INTERNAL

51 m²

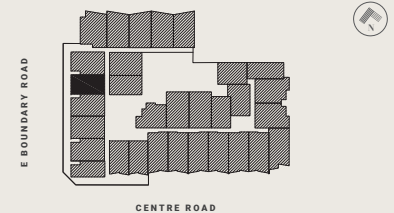
EXTERNAL

13 m²

TOTAL

63.3 m²

LEVEL ONE KEY PLAN



DISCLAIMER

The information provided is illustrative only and may not be relied upon. In particular the final area dimensions of any residence sold will be determined by the contract of sale and may differ from the depicted. Whilst every effort is made to provide accurate and complete information, the developer does not warrant or represent that the information in this floor plan is free from errors or omissions or is suitable for your intended use. All apartment and balcony areas are calculated as Gross Floor Area in accordance with the Method of Measurement for Residential Property as published by the Property Council of Australia. Subject to any terms implied by law which cannot be excluded, the developer accepts no responsibility for any loss, damage, cost or expense (wether direct or indirect) by you as a result of any error, omission or misrepresentation in information. All information is subject to change without notice.



CENTREPIECE

Residences



APARTMENT

1.30

BEDROOM(S)

1

BATHROOM(S)

1

INTERNAL

46 m²

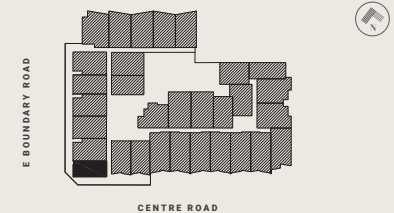
EXTERNAL

8 m²

TOTAL

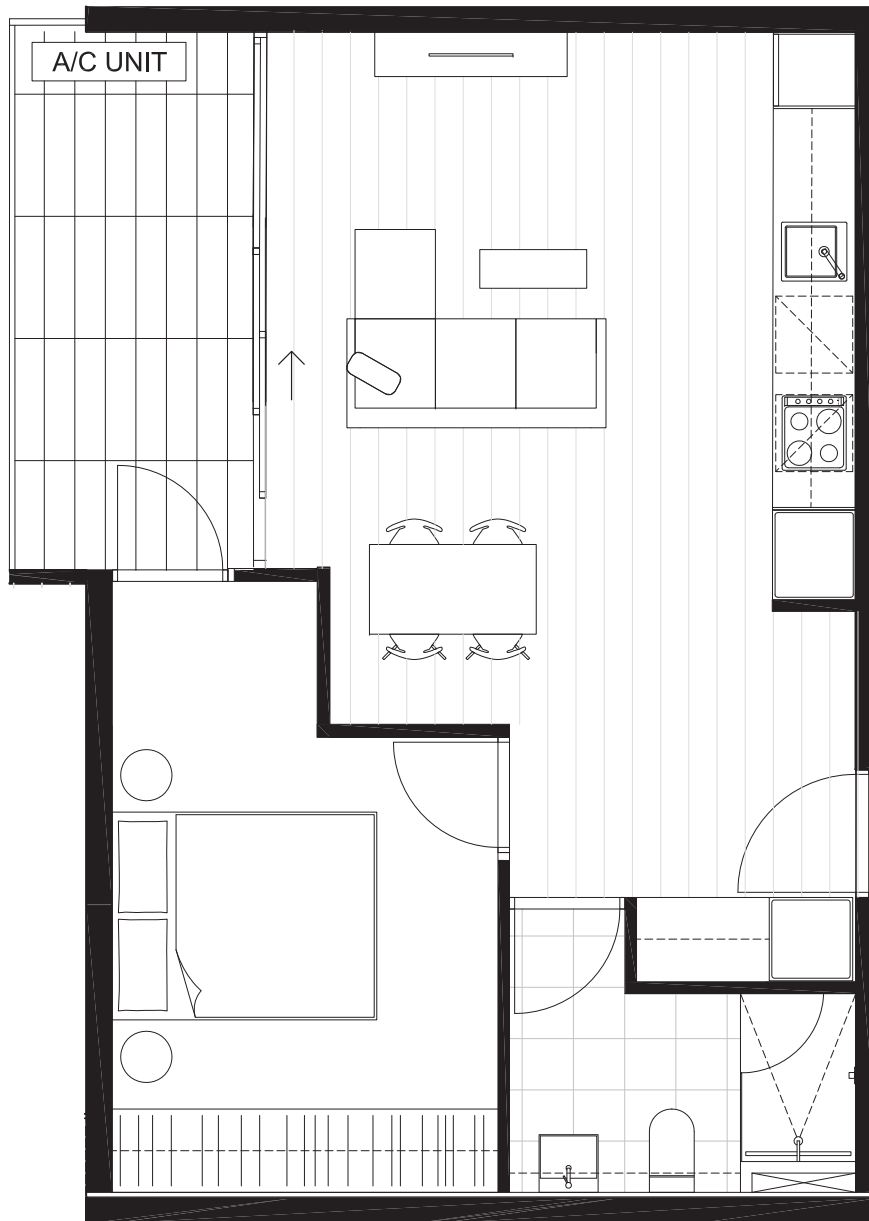
54.4 m²

LEVEL ONE KEY PLAN



DISCLAIMER

The information provided is illustrative only and may not be relied upon. In particular the final area dimensions of any residence sold will be determined by the contract of sale and may differ from the depicted. Whilst every effort is made to provide accurate and complete information, the developer does not warrant or represent that the information in this floor plan is free from errors or omissions or is suitable for your intended use. All apartment and balcony areas are calculated as Gross Floor Area in accordance with the Method of Measurement for Residential Property as published by the Property Council of Australia. Subject to any terms implied by law which cannot be excluded, the developer accepts no responsibility for any loss, damage, cost or expense (wether direct or indirect) by you as a result of any error, omission or misrepresentation in information. All information is subject to change without notice.



CENTREPIECE

Residences

APARTMENT

1.31

BEDROOM(S)

1

BATHROOM(S)

1

INTERNAL

51 m²

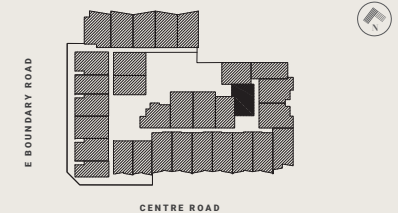
EXTERNAL

8 m²

TOTAL

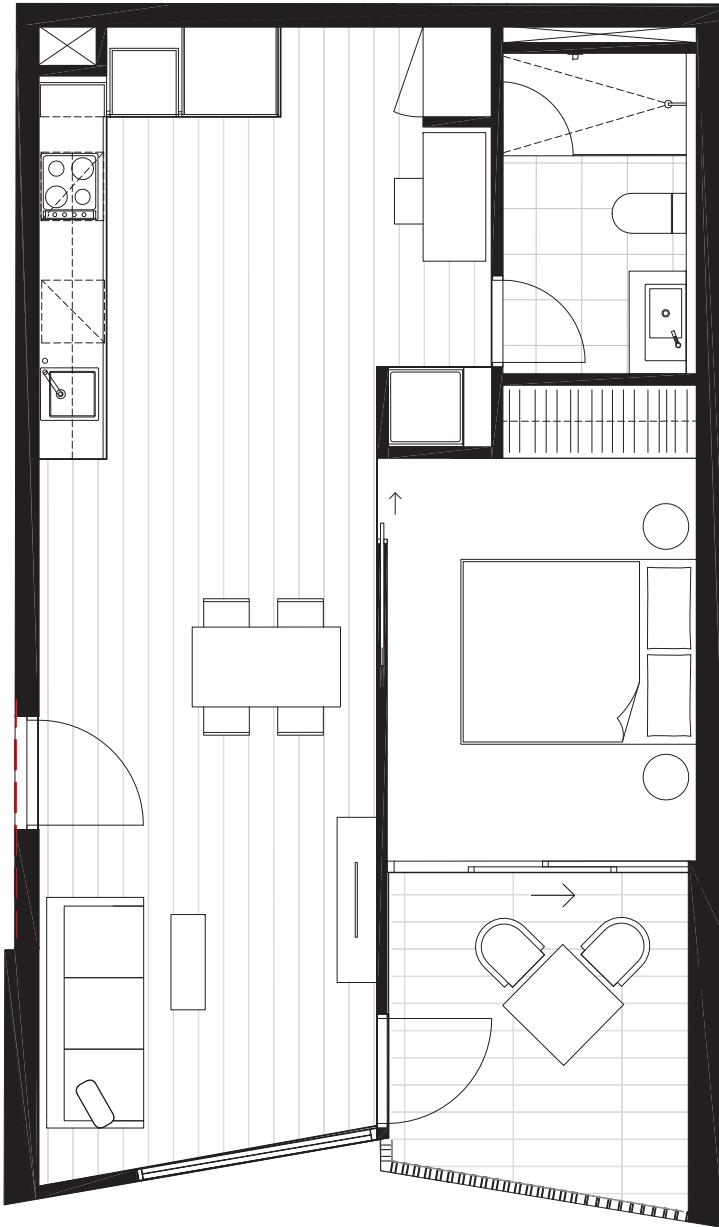
59.5 m²

LEVEL ONE KEY PLAN



DISCLAIMER

The information provided is illustrative only and may not be relied upon. In particular the final area dimensions of any residence sold will be determined by the contract of sale and may differ from the depicted. Whilst every effort is made to provide accurate and complete information, the developer does not warrant or represent that the information in this floor plan is free from errors or omissions or is suitable for your intended use. All apartment and balcony areas are calculated as Gross Floor Area in accordance with the Method of Measurement for Residential Property as published by the Property Council of Australia. Subject to any terms implied by law which cannot be excluded, the developer accepts no responsibility for any loss, damage, cost or expense (wether direct or indirect) by you as a result of any error, omission or misrepresentation in information. All information is subject to change without notice.



CENTREPIECE

Residences

APARTMENT

2.01

BEDROOM(S)

1+S

BATHROOM(S)

1

INTERNAL

55 m²

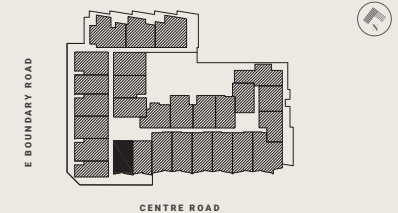
EXTERNAL

8 m²

TOTAL

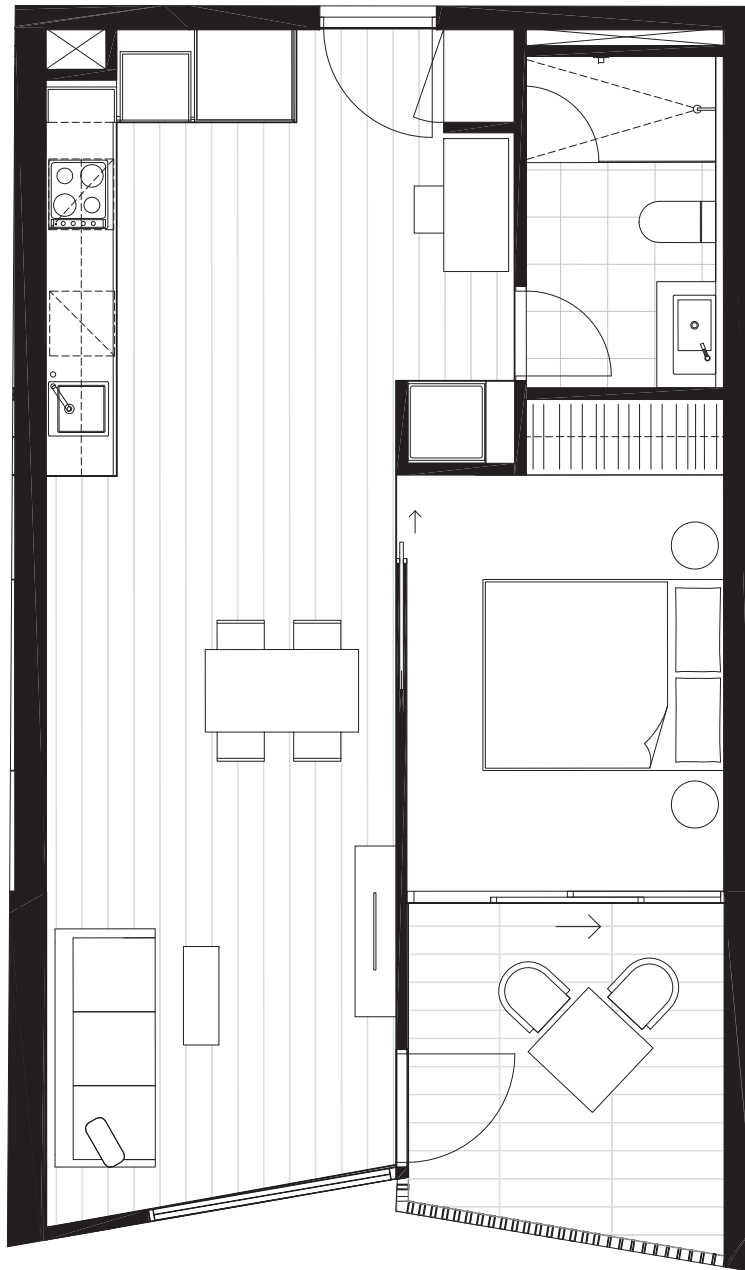
63.4 m²

LEVEL TWO KEY PLAN



DISCLAIMER

The information provided is illustrative only and may not be relied upon. In particular the final area dimensions of any residence sold will be determined by the contract of sale and may differ from the depicted. Whilst every effort is made to provide accurate and complete information, the developer does not warrant or represent that the information in this floor plan is free from errors or omissions or is suitable for your intended use. All apartment and balcony areas are calculated as Gross Floor Area in accordance with the Method of Measurement for Residential Property as published by the Property Council of Australia. Subject to any terms implied by law which cannot be excluded, the developer accepts no responsibility for any loss, damage, cost or expense (wether direct or indirect) by you as a result of any error, omission or misrepresentation in information. All information is subject to change without notice.



CENTREPIECE

Residences

APARTMENT

2.02

BEDROOM(S)

BATHROOM(S)

1+S

1

INTERNAL

EXTERNAL

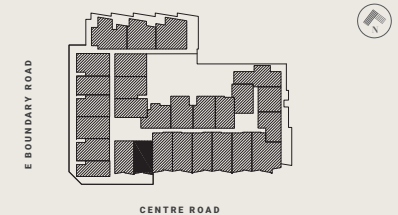
54 m²

8 m²

TOTAL

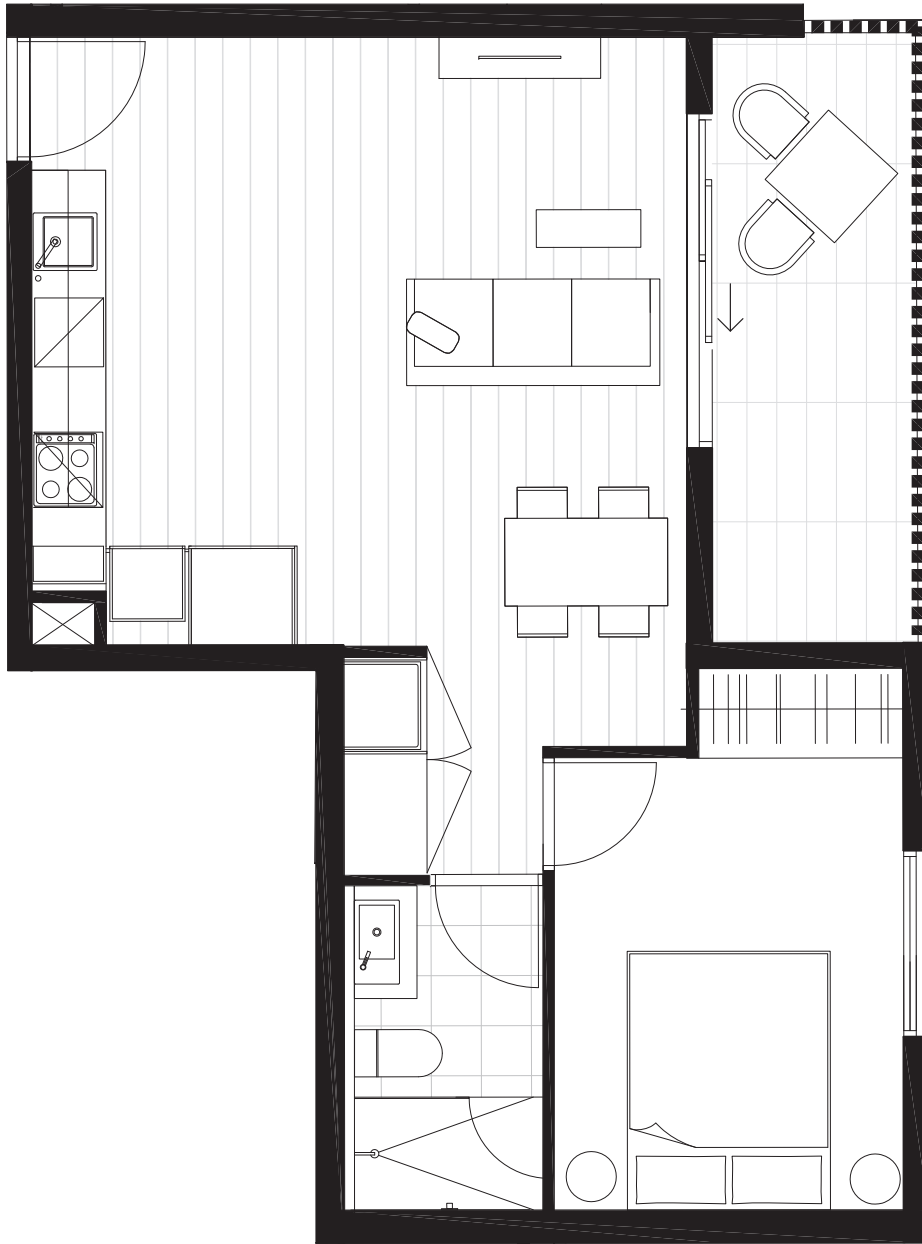
62.0 m²

LEVEL TWO KEY PLAN



DISCLAIMER

The information provided is illustrative only and may not be relied upon. In particular the final area dimensions of any residence sold will be determined by the contract of sale and may differ from the depicted. Whilst every effort is made to provide accurate and complete information, the developer does not warrant or represent that the information in this floor plan is free from errors or omissions or is suitable for your intended use. All apartment and balcony areas are calculated as Gross Floor Area in accordance with the Method of Measurement for Residential Property as published by the Property Council of Australia. Subject to any terms implied by law which cannot be excluded, the developer accepts no responsibility for any loss, damage, cost or expense (wether direct or indirect) by you as a result of any error, omission or misrepresentation in information. All information is subject to change without notice.



CENTREPIECE

Residences

APARTMENT

2.09

BEDROOM(S)

1

BATHROOM(S)

1

INTERNAL

51 m²

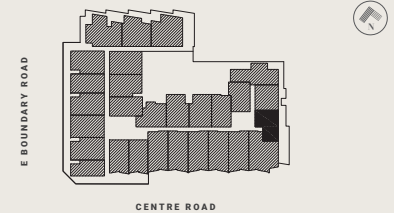
EXTERNAL

9 m²

TOTAL

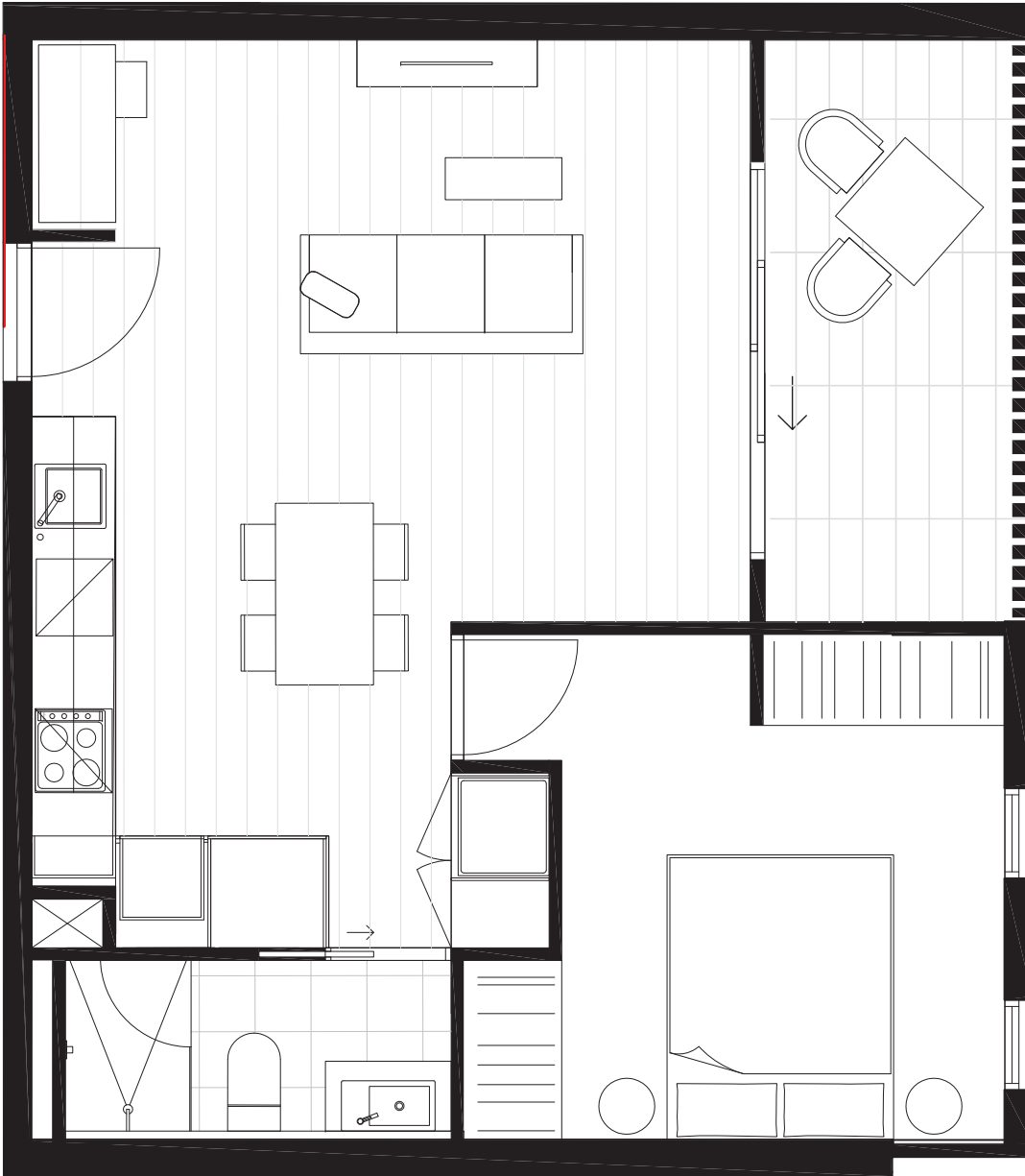
59.7 m²

LEVEL TWO KEY PLAN



DISCLAIMER

The information provided is illustrative only and may not be relied upon. In particular the final area dimensions of any residence sold will be determined by the contract of sale and may differ from the depicted. Whilst every effort is made to provide accurate and complete information, the developer does not warrant or represent that the information in this floor plan is free from errors or omissions or is suitable for your intended use. All apartment and balcony areas are calculated as Gross Floor Area in accordance with the Method of Measurement for Residential Property as published by the Property Council of Australia. Subject to any terms implied by law which cannot be excluded, the developer accepts no responsibility for any loss, damage, cost or expense (wether direct or indirect) by you as a result of any error, omission or misrepresentation in information. All information is subject to change without notice.



CENTREPIECE

Residences

APARTMENT

2.10

BEDROOM(S)

BATHROOM(S)

1+S

1

INTERNAL

EXTERNAL

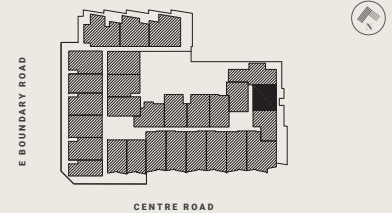
52 m²

8 m²

TOTAL

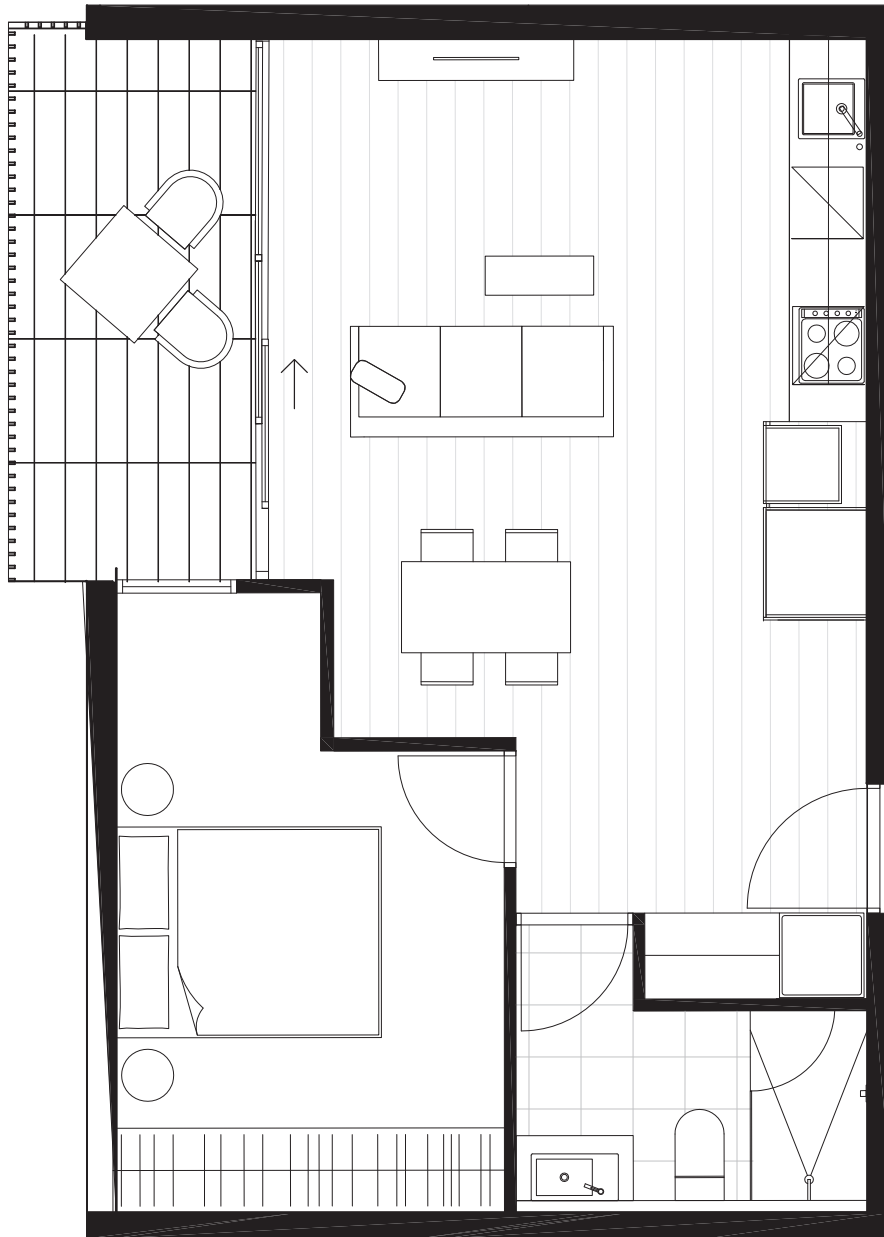
59.8 m²

LEVEL TWO KEY PLAN



DISCLAIMER

The information provided is illustrative only and may not be relied upon. In particular the final area dimensions of any residence sold will be determined by the contract of sale and may differ from the depicted. Whilst every effort is made to provide accurate and complete information, the developer does not warrant or represent that the information in this floor plan is free from errors or omissions or is suitable for your intended use. All apartment and balcony areas are calculated as Gross Floor Area in accordance with the Method of Measurement for Residential Property as published by the Property Council of Australia. Subject to any terms implied by law which cannot be excluded, the developer accepts no responsibility for any loss, damage, cost or expense (wether direct or indirect) by you as a result of any error, omission or misrepresentation in information. All information is subject to change without notice.



CENTREPIECE

Residences

APARTMENT

2.12

BEDROOM(S)

1

BATHROOM(S)

1

INTERNAL

52 m²

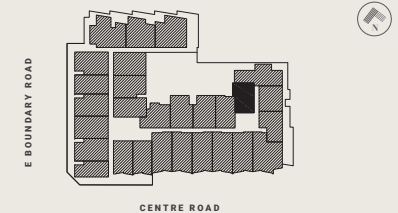
EXTERNAL

8 m²

TOTAL

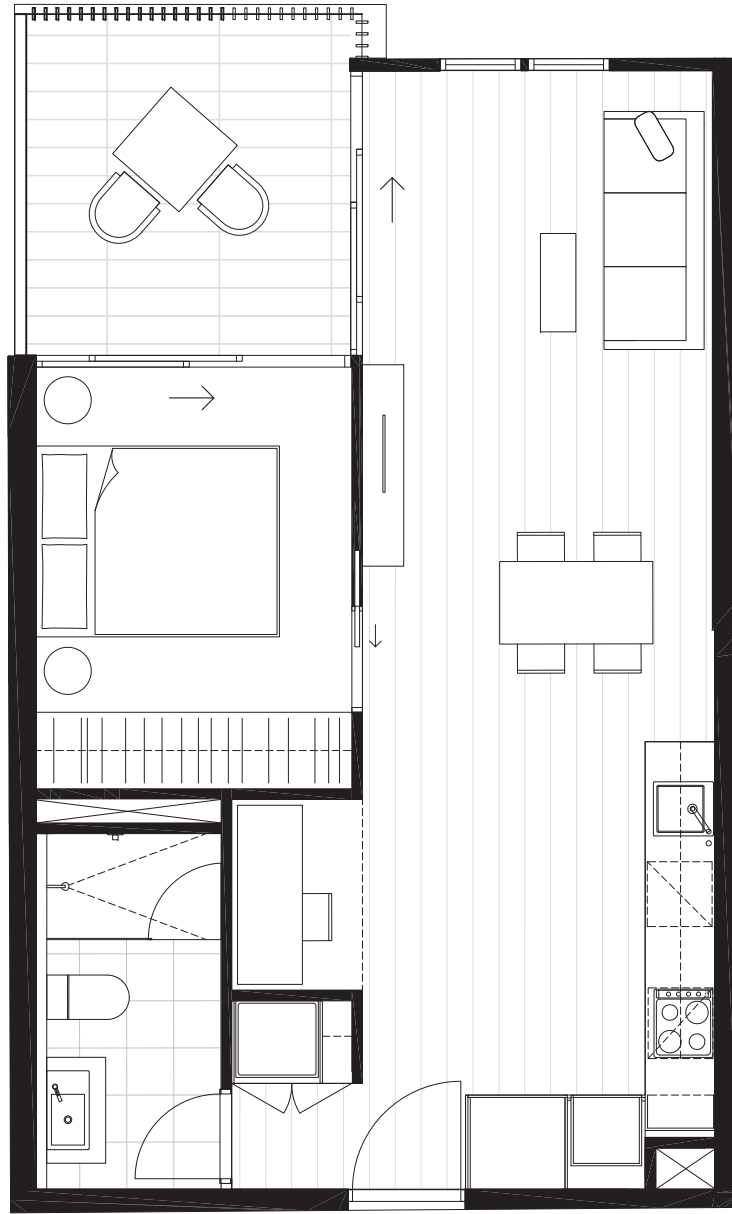
60.0 m²

LEVEL TWO KEY PLAN



DISCLAIMER

The information provided is illustrative only and may not be relied upon. In particular the final area dimensions of any residence sold will be determined by the contract of sale and may differ from the depicted. Whilst every effort is made to provide accurate and complete information, the developer does not warrant or represent that the information in this floor plan is free from errors or omissions or is suitable for your intended use. All apartment and balcony areas are calculated as Gross Floor Area in accordance with the Method of Measurement for Residential Property as published by the Property Council of Australia. Subject to any terms implied by law which cannot be excluded, the developer accepts no responsibility for any loss, damage, cost or expense (wether direct or indirect) by you as a result of any error, omission or misrepresentation in information. All information is subject to change without notice.



CENTREPIECE

Residences

APARTMENT

2.13

BEDROOM(S)

BATHROOM(S)

1+S

1

INTERNAL

EXTERNAL

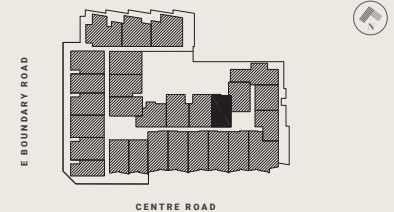
52 m²

8 m²

TOTAL

60.4 m²

LEVEL TWO KEY PLAN



DISCLAIMER

The information provided is illustrative only and may not be relied upon. In particular the final area dimensions of any residence sold will be determined by the contract of sale and may differ from the depicted. Whilst every effort is made to provide accurate and complete information, the developer does not warrant or represent that the information in this floor plan is free from errors or omissions or is suitable for your intended use. All apartment and balcony areas are calculated as Gross Floor Area in accordance with the Method of Measurement for Residential Property as published by the Property Council of Australia. Subject to any terms implied by law which cannot be excluded, the developer accepts no responsibility for any loss, damage, cost or expense (wether direct or indirect) by you as a result of any error, omission or misrepresentation in information. All information is subject to change without notice.

CENTREPIECE

Residences



APARTMENT

2.17

BEDROOM(S)

1+S

BATHROOM(S)

1

INTERNAL

51 m²

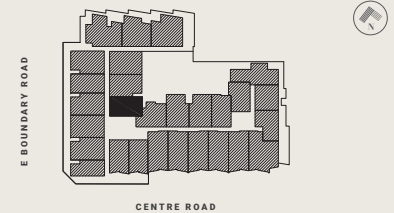
EXTERNAL

9 m²

TOTAL

60.1 m²

LEVEL TWO KEY PLAN



DISCLAIMER

The information provided is illustrative only and may not be relied upon. In particular the final area dimensions of any residence sold will be determined by the contract of sale and may differ from the depicted. Whilst every effort is made to provide accurate and complete information, the developer does not warrant or represent that the information in this floor plan is free from errors or omissions or is suitable for your intended use. All apartment and balcony areas are calculated as Gross Floor Area in accordance with the Method of Measurement for Residential Property as published by the Property Council of Australia. Subject to any terms implied by law which cannot be excluded, the developer accepts no responsibility for any loss, damage, cost or expense (wether direct or indirect) by you as a result of any error, omission or misrepresentation in information. All information is subject to change without notice.

CENTREPIECE

Residences



APARTMENT

2.24

BEDROOM(S)

1+S

BATHROOM(S)

1

INTERNAL

51 m²

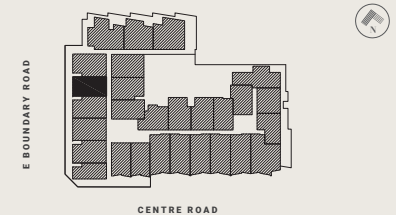
EXTERNAL

13 m²

TOTAL

63.3 m²

LEVEL TWO KEY PLAN

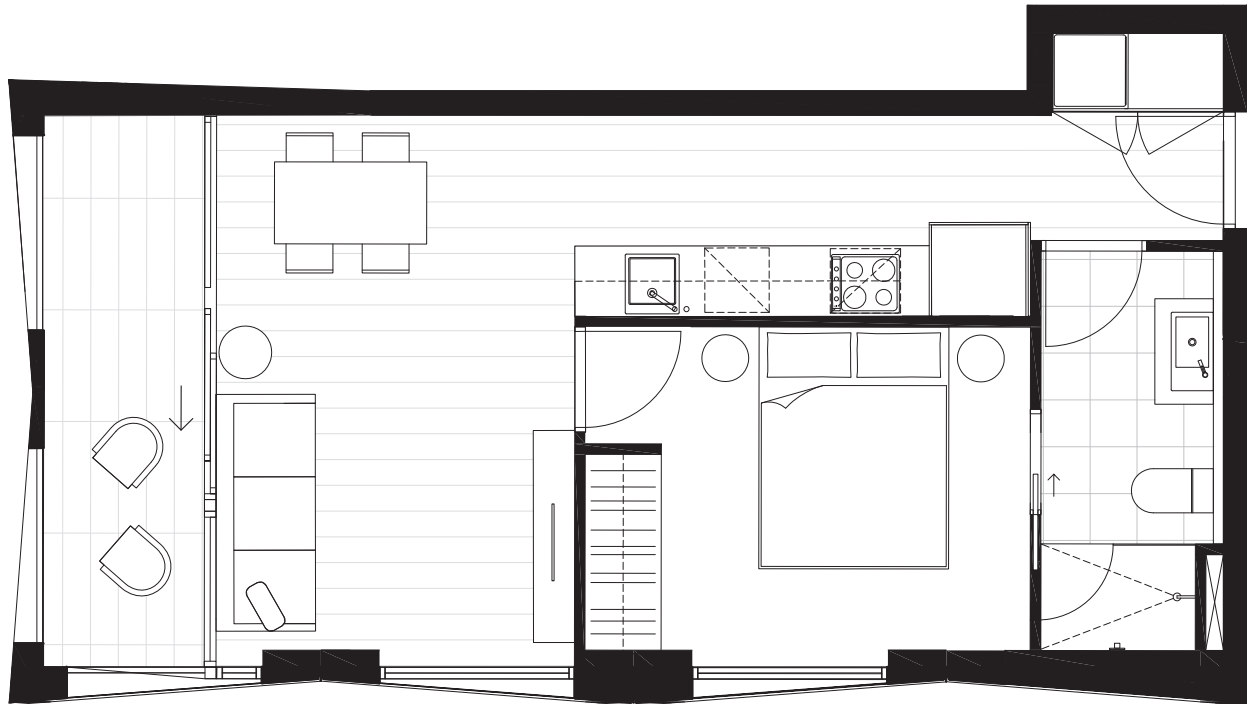


DISCLAIMER

The information provided is illustrative only and may not be relied upon. In particular the final area dimensions of any residence sold will be determined by the contract of sale and may differ from the depicted. Whilst every effort is made to provide accurate and complete information, the developer does not warrant or represent that the information in this floor plan is free from errors or omissions or is suitable for your intended use. All apartment and balcony areas are calculated as Gross Floor Area in accordance with the Method of Measurement for Residential Property as published by the Property Council of Australia. Subject to any terms implied by law which cannot be excluded, the developer accepts no responsibility for any loss, damage, cost or expense (wether direct or indirect) by you as a result of any error, omission or misrepresentation in information. All information is subject to change without notice.

CENTREPIECE

Residences



APARTMENT

2.28

BEDROOM(S)

1

BATHROOM(S)

1

INTERNAL

46 m²

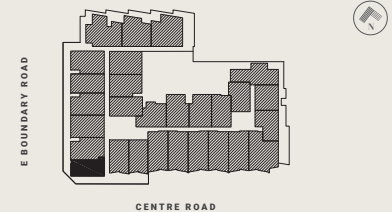
EXTERNAL

8 m²

TOTAL

54.4 m²

LEVEL TWO KEY PLAN



DISCLAIMER

The information provided is illustrative only and may not be relied upon. In particular the final area dimensions of any residence sold will be determined by the contract of sale and may differ from the depicted. Whilst every effort is made to provide accurate and complete information, the developer does not warrant or represent that the information in this floor plan is free from errors or omissions or is suitable for your intended use. All apartment and balcony areas are calculated as Gross Floor Area in accordance with the Method of Measurement for Residential Property as published by the Property Council of Australia. Subject to any terms implied by law which cannot be excluded, the developer accepts no responsibility for any loss, damage, cost or expense (wether direct or indirect) by you as a result of any error, omission or misrepresentation in information. All information is subject to change without notice.

CENTREPIECE

Residences



APARTMENT

3.04

BEDROOM(S)

1+S

BATHROOM(S)

1

INTERNAL

54 m²

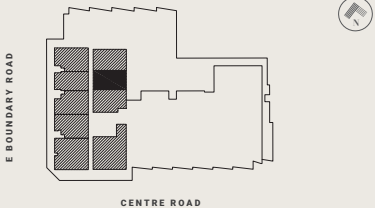
EXTERNAL

9 m²

TOTAL

62.4 m²

LEVEL THREE KEY PLAN



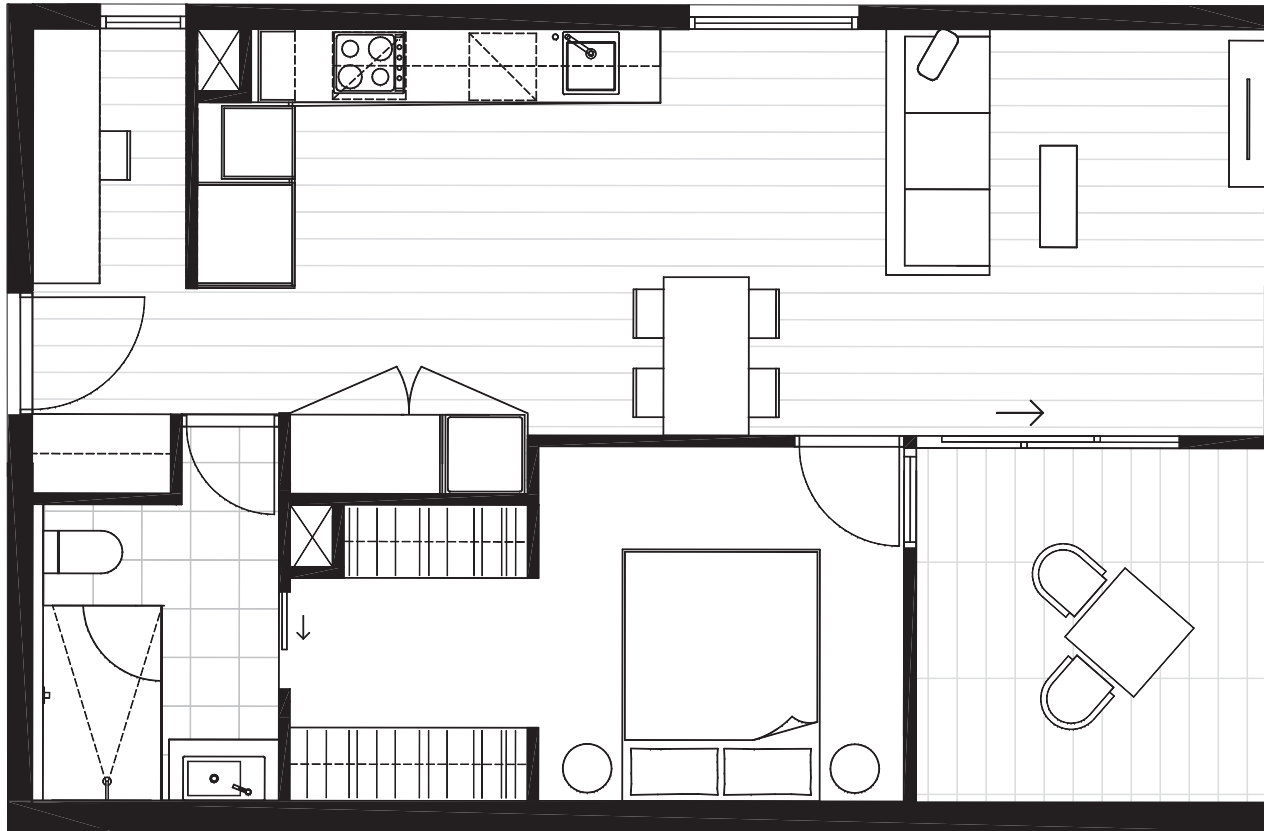
DISCLAIMER

The information provided is illustrative only and may not be relied upon. In particular the final area dimensions of any residence sold will be determined by the contract of sale and may differ from the depicted. Whilst every effort is made to provide accurate and complete information, the developer does not warrant or represent that the information in this floor plan is free from errors or omissions or is suitable for your intended use. All apartment and balcony areas are calculated as Gross Floor Area in accordance with the Method of Measurement for Residential Property as published by the Property Council of Australia. Subject to any terms implied by law which cannot be excluded, the developer accepts no responsibility for any loss, damage, cost or expense (wether direct or indirect) by you as a result of any error, omission or misrepresentation in information. All information is subject to change without notice.



CENTREPIECE

Residences



APARTMENT

3.05

BEDROOM(S)

1+S

BATHROOM(S)

1

INTERNAL

60 m²

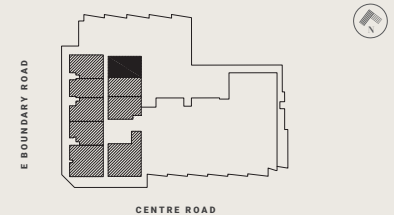
EXTERNAL

9 m²

TOTAL

69.4 m²

LEVEL THREE KEY PLAN



DISCLAIMER

The information provided is illustrative only and may not be relied upon. In particular the final area dimensions of any residence sold will be determined by the contract of sale and may differ from the depicted. Whilst every effort is made to provide accurate and complete information, the developer does not warrant or represent that the information in this floor plan is free from errors or omissions or is suitable for your intended use. All apartment and balcony areas are calculated as Gross Floor Area in accordance with the Method of Measurement for Residential Property as published by the Property Council of Australia. Subject to any terms implied by law which cannot be excluded, the developer accepts no responsibility for any loss, damage, cost or expense (wether direct or indirect) by you as a result of any error, omission or misrepresentation in information. All information is subject to change without notice.

CENTREPIECE

Residences



APARTMENT

3.07

BEDROOM(S)

1+S

BATHROOM(S)

1

INTERNAL

52 m²

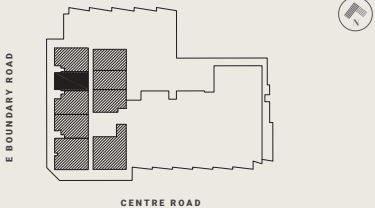
EXTERNAL

11 m²

TOTAL

62.1 m²

LEVEL THREE KEY PLAN



DISCLAIMER

The information provided is illustrative only and may not be relied upon. In particular the final area dimensions of any residence sold will be determined by the contract of sale and may differ from the depicted. Whilst every effort is made to provide accurate and complete information, the developer does not warrant or represent that the information in this floor plan is free from errors or omissions or is suitable for your intended use. All apartment and balcony areas are calculated as Gross Floor Area in accordance with the Method of Measurement for Residential Property as published by the Property Council of Australia. Subject to any terms implied by law which cannot be excluded, the developer accepts no responsibility for any loss, damage, cost or expense (wether direct or indirect) by you as a result of any error, omission or misrepresentation in information. All information is subject to change without notice.

CENTREPIECE

Residences

APARTMENT

4.04

BEDROOM(S)

1+S

BATHROOM(S)

1

INTERNAL

54 m²

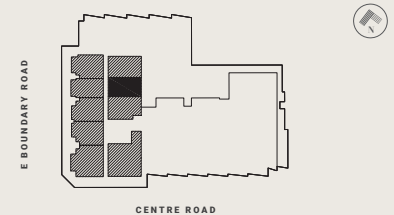
EXTERNAL

9 m²

TOTAL

62.4 m²

LEVEL FOUR KEY PLAN



DISCLAIMER

The information provided is illustrative only and may not be relied upon. In particular the final area dimensions of any residence sold will be determined by the contract of sale and may differ from the depicted. Whilst every effort is made to provide accurate and complete information, the developer does not warrant or represent that the information in this floor plan is free from errors or omissions or is suitable for your intended use. All apartment and balcony areas are calculated as Gross Floor Area in accordance with the Method of Measurement for Residential Property as published by the Property Council of Australia. Subject to any terms implied by law which cannot be excluded, the developer accepts no responsibility for any loss, damage, cost or expense (wether direct or indirect) by you as a result of any error, omission or misrepresentation in information. All information is subject to change without notice.



CENTREPIECE

Residences



APARTMENT

4.05

BEDROOM(S)

1+S

BATHROOM(S)

1

INTERNAL

60 m²

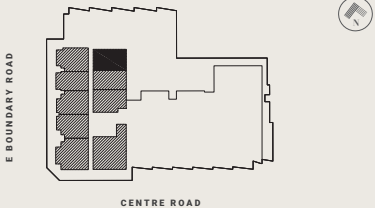
EXTERNAL

9 m²

TOTAL

69.4 m²

LEVEL FOUR KEY PLAN

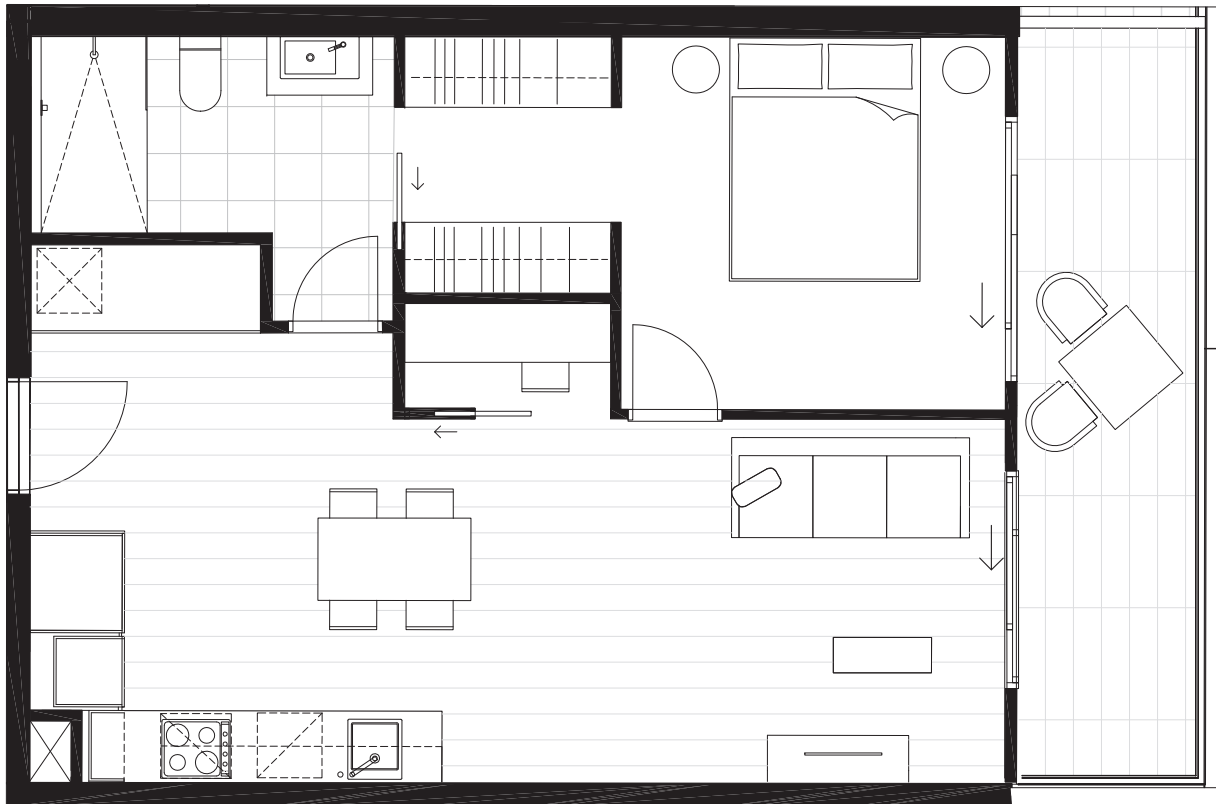


DISCLAIMER

The information provided is illustrative only and may not be relied upon. In particular the final area dimensions of any residence sold will be determined by the contract of sale and may differ from the depicted. Whilst every effort is made to provide accurate and complete information, the developer does not warrant or represent that the information in this floor plan is free from errors or omissions or is suitable for your intended use. All apartment and balcony areas are calculated as Gross Floor Area in accordance with the Method of Measurement for Residential Property as published by the Property Council of Australia. Subject to any terms implied by law which cannot be excluded, the developer accepts no responsibility for any loss, damage, cost or expense (wether direct or indirect) by you as a result of any error, omission or misrepresentation in information. All information is subject to change without notice.

CENTREPIECE

Residences



APARTMENT

5.02

BEDROOM(S)

1+S

BATHROOM(S)

1

INTERNAL

56 m²

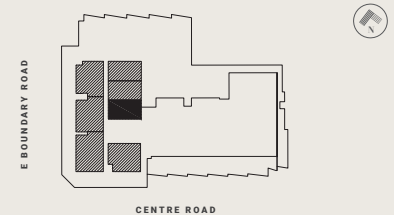
EXTERNAL

10 m²

TOTAL

65.8 m²

LEVEL FIVE KEY PLAN



DISCLAIMER

The information provided is illustrative only and may not be relied upon. In particular the final area dimensions of any residence sold will be determined by the contract of sale and may differ from the depicted. Whilst every effort is made to provide accurate and complete information, the developer does not warrant or represent that the information in this floor plan is free from errors or omissions or is suitable for your intended use. All apartment and balcony areas are calculated as Gross Floor Area in accordance with the Method of Measurement for Residential Property as published by the Property Council of Australia. Subject to any terms implied by law which cannot be excluded, the developer accepts no responsibility for any loss, damage, cost or expense (wether direct or indirect) by you as a result of any error, omission or misrepresentation in information. All information is subject to change without notice.