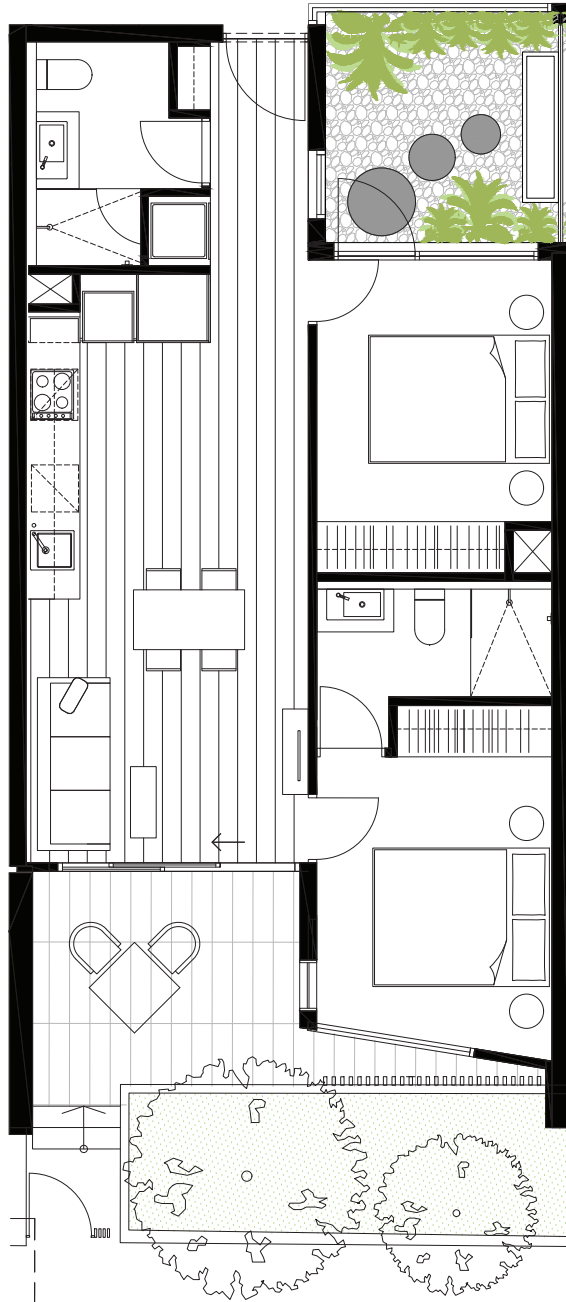




*TWO  
BEDROOMS*





# CENTREPIECE

*Residences*

APARTMENT

**G.01**

BEDROOM(S)      BATHROOM(S)

2                      2

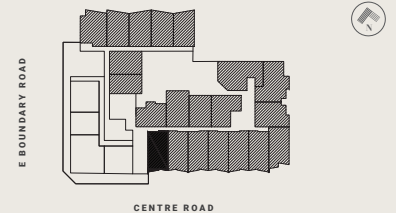
INTERNAL              EXTERNAL

62 m<sup>2</sup>                      19 m<sup>2</sup>

TOTAL

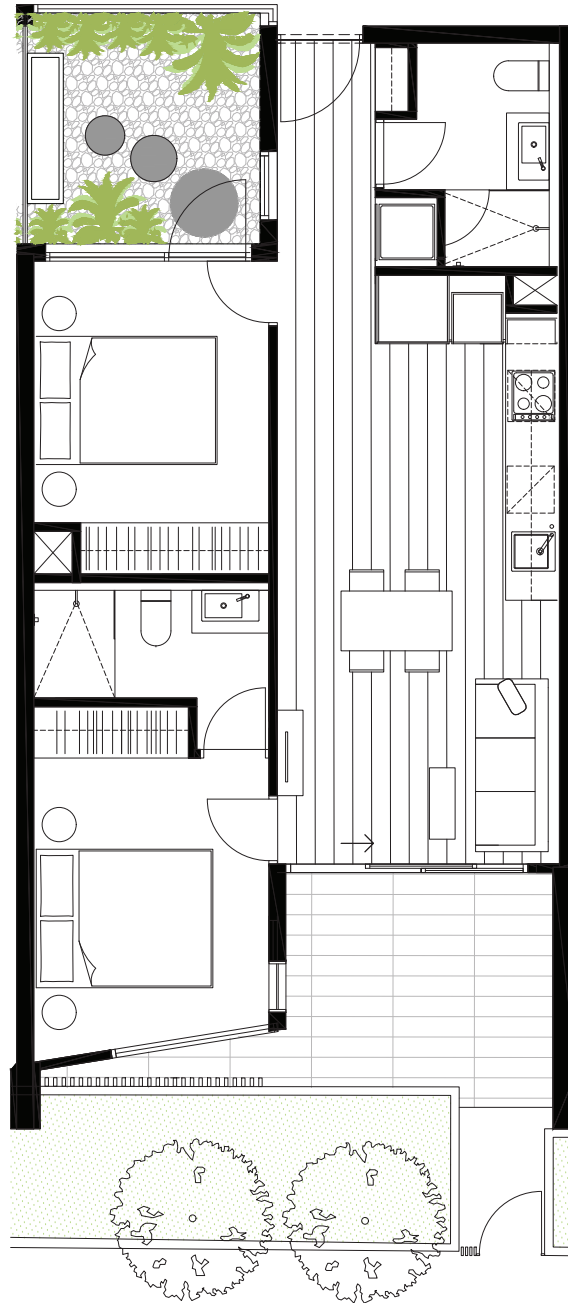
**81.3 m<sup>2</sup>**

GROUND LEVEL KEY PLAN



DISCLAIMER

The information provided is illustrative only and may not be relied upon. In particular the final area dimensions of any residence sold will be determined by the contract of sale and may differ from the depicted. Whilst every effort is made to provide accurate and complete information, the developer does not warrant or represent that the information in this floor plan is free from errors or omissions or is suitable for your intended use. All apartment and balcony areas are calculated as Gross Floor Area in accordance with the Method of Measurement for Residential Property as published by the Property Council of Australia. Subject to any terms implied by law which cannot be excluded, the developer accepts no responsibility for any loss, damage, cost or expense (wether direct or indirect) by you as a result of any error, omission or misrepresentation in information. All information is subject to change without notice.



# CENTREPIECE

Residences

APARTMENT

G.02

BEDROOM(S)

2

BATHROOM(S)

2

INTERNAL

62 m<sup>2</sup>

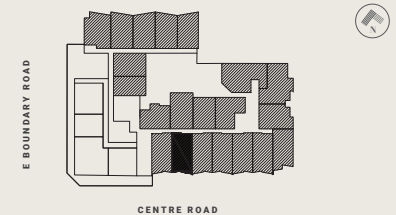
EXTERNAL

20 m<sup>2</sup>

TOTAL

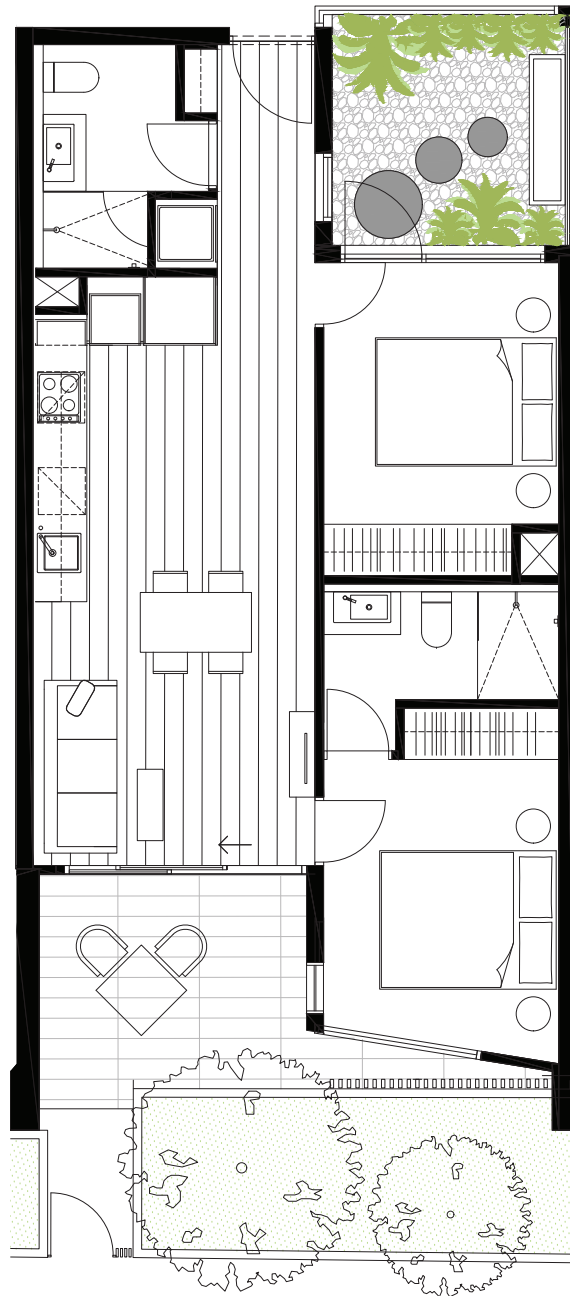
81.8 m<sup>2</sup>

GROUND LEVEL KEY PLAN



DISCLAIMER

The information provided is illustrative only and may not be relied upon. In particular the final area dimensions of any residence sold will be determined by the contract of sale and may differ from the depicted. Whilst every effort is made to provide accurate and complete information, the developer does not warrant or represent that the information in this floor plan is free from errors or omissions or is suitable for your intended use. All apartment and balcony areas are calculated as Gross Floor Area in accordance with the Method of Measurement for Residential Property as published by the Property Council of Australia. Subject to any terms implied by law which cannot be excluded, the developer accepts no responsibility for any loss, damage, cost or expense (wether direct or indirect) by you as a result of any error, omission or misrepresentation in information. All information is subject to change without notice.



# CENTREPIECE

Residences

APARTMENT

G.03

BEDROOM(S)      BATHROOM(S)

2                      2

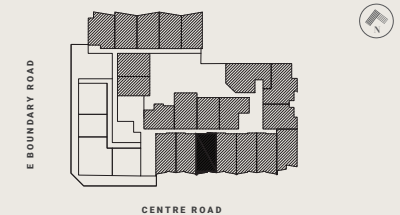
INTERNAL              EXTERNAL

62 m<sup>2</sup>                  20 m<sup>2</sup>

TOTAL

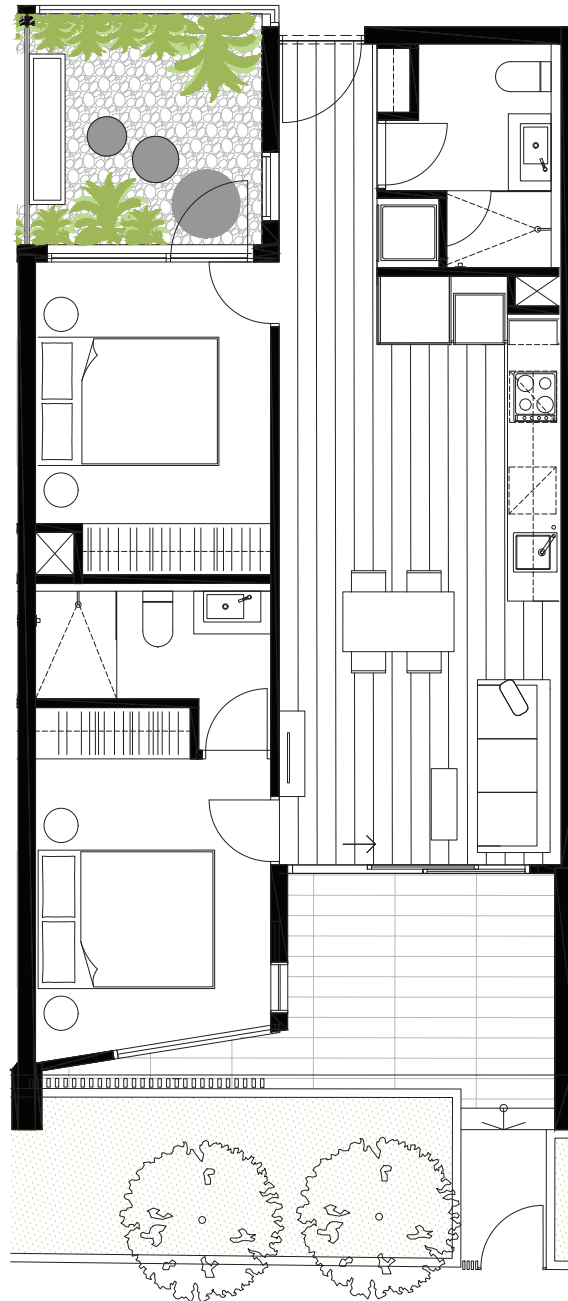
81.8 m<sup>2</sup>

GROUND LEVEL KEY PLAN



DISCLAIMER

The information provided is illustrative only and may not be relied upon. In particular the final area dimensions of any residence sold will be determined by the contract of sale and may differ from the depicted. Whilst every effort is made to provide accurate and complete information, the developer does not warrant or represent that the information in this floor plan is free from errors or omissions or is suitable for your intended use. All apartment and balcony areas are calculated as Gross Floor Area in accordance with the Method of Measurement for Residential Property as published by the Property Council of Australia. Subject to any terms implied by law which cannot be excluded, the developer accepts no responsibility for any loss, damage, cost or expense (wether direct or indirect) by you as a result of any error, omission or misrepresentation in information. All information is subject to change without notice.



# CENTREPIECE

Residences

APARTMENT

G.04

BEDROOM(S)

2

BATHROOM(S)

2

INTERNAL

62 m<sup>2</sup>

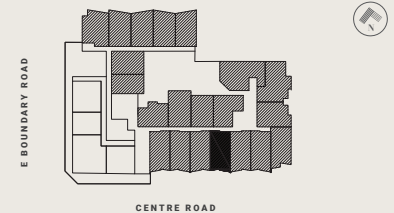
EXTERNAL

20 m<sup>2</sup>

TOTAL

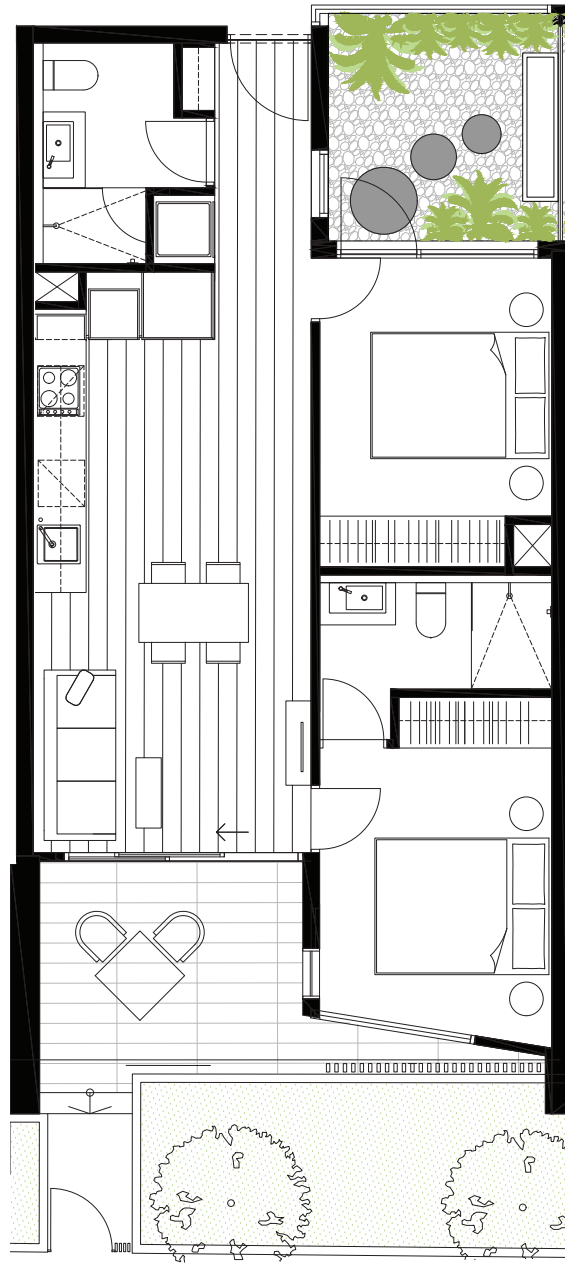
81.8 m<sup>2</sup>

GROUND LEVEL KEY PLAN



DISCLAIMER

The information provided is illustrative only and may not be relied upon. In particular the final area dimensions of any residence sold will be determined by the contract of sale and may differ from the depicted. Whilst every effort is made to provide accurate and complete information, the developer does not warrant or represent that the information in this floor plan is free from errors or omissions or is suitable for your intended use. All apartment and balcony areas are calculated as Gross Floor Area in accordance with the Method of Measurement for Residential Property as published by the Property Council of Australia. Subject to any terms implied by law which cannot be excluded, the developer accepts no responsibility for any loss, damage, cost or expense (wether direct or indirect) by you as a result of any error, omission or misrepresentation in information. All information is subject to change without notice.



# CENTREPIECE

*Residences*

APARTMENT

**G.05**

BEDROOM(S)

2

BATHROOM(S)

2

INTERNAL

62 m<sup>2</sup>

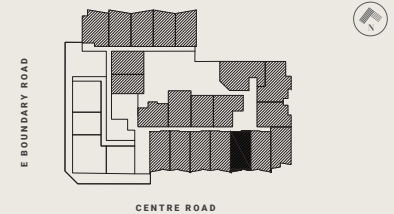
EXTERNAL

20 m<sup>2</sup>

TOTAL

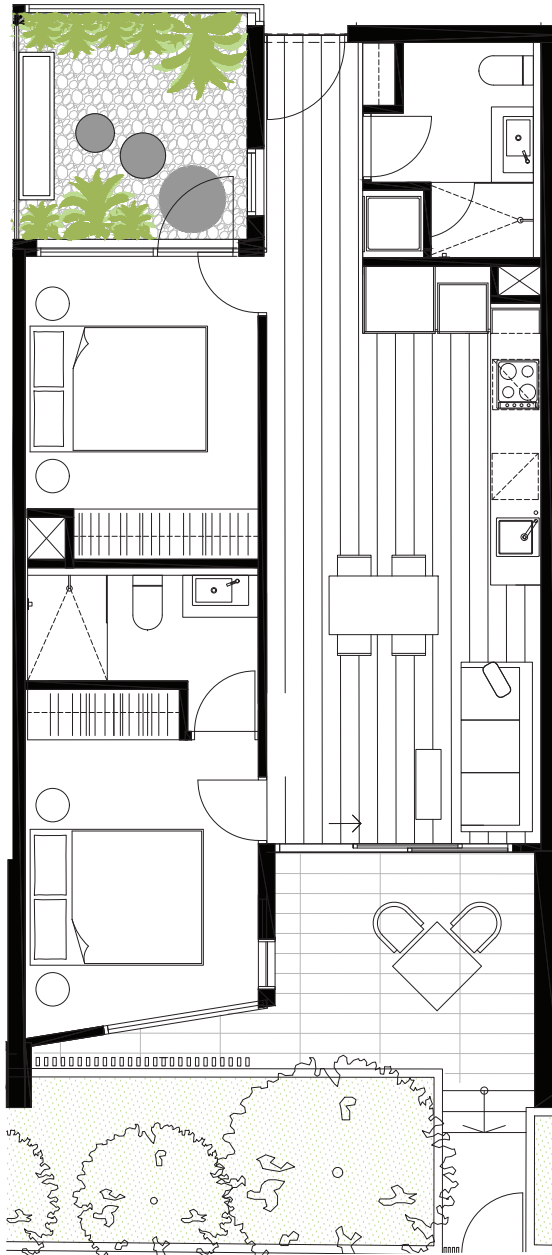
**81.8 m<sup>2</sup>**

GROUND LEVEL KEY PLAN



DISCLAIMER

The information provided is illustrative only and may not be relied upon. In particular the final area dimensions of any residence sold will be determined by the contract of sale and may differ from the depicted. Whilst every effort is made to provide accurate and complete information, the developer does not warrant or represent that the information in this floor plan is free from errors or omissions or is suitable for your intended use. All apartment and balcony areas are calculated as Gross Floor Area in accordance with the Method of Measurement for Residential Property as published by the Property Council of Australia. Subject to any terms implied by law which cannot be excluded, the developer accepts no responsibility for any loss, damage, cost or expense (wether direct or indirect) by you as a result of any error, omission or misrepresentation in information. All information is subject to change without notice.



# CENTREPIECE

Residences

APARTMENT

G.06

BEDROOM(S)

2

BATHROOM(S)

2

INTERNAL

62 m<sup>2</sup>

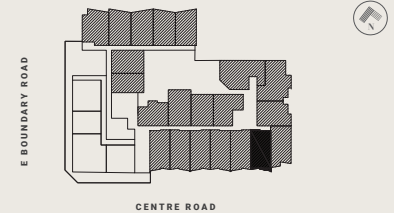
EXTERNAL

21 m<sup>2</sup>

TOTAL

82.9 m<sup>2</sup>

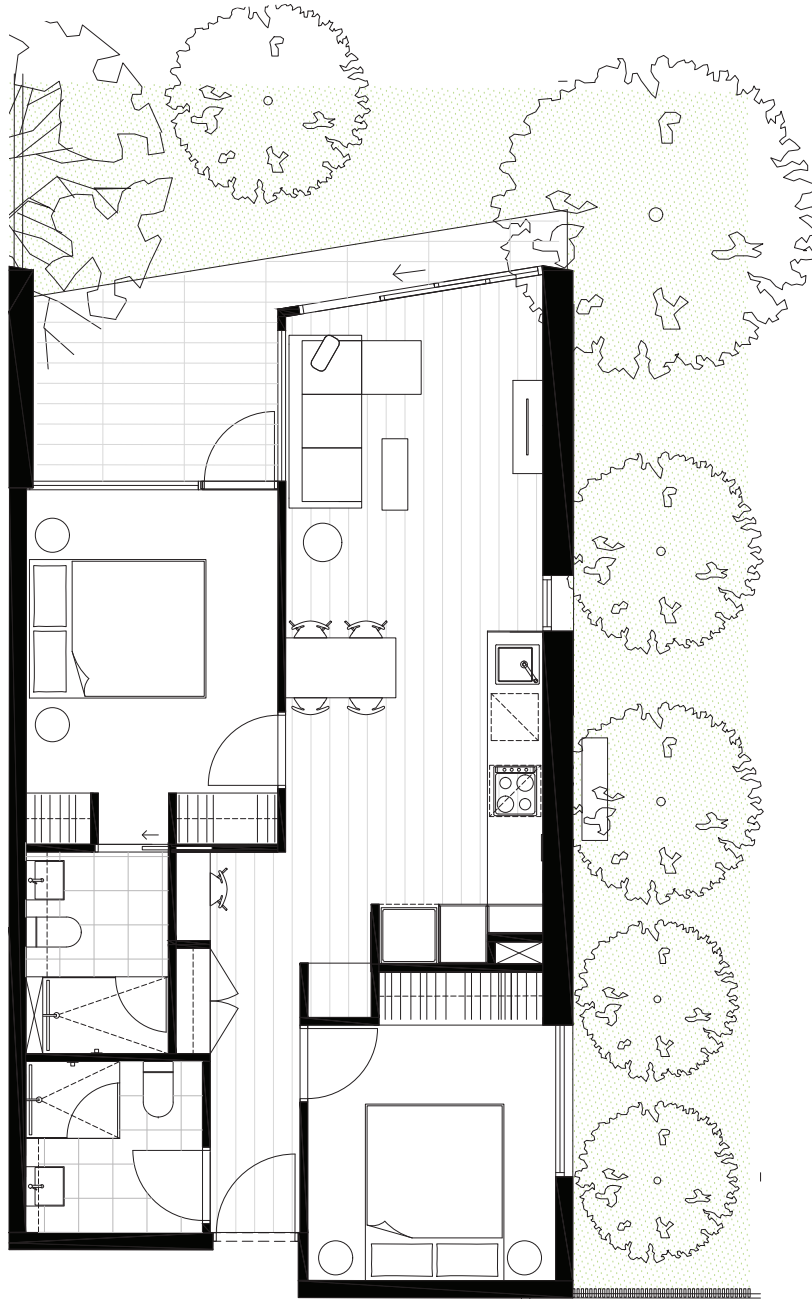
GROUND LEVEL KEY PLAN



DISCLAIMER

The information provided is illustrative only and may not be relied upon. In particular the final area dimensions of any residence sold will be determined by the contract of sale and may differ from the depicted. Whilst every effort is made to provide accurate and complete information, the developer does not warrant or represent that the information in this floor plan is free from errors or omissions or is suitable for your intended use. All apartment and balcony areas are calculated as Gross Floor Area in accordance with the Method of Measurement for Residential Property as published by the Property Council of Australia. Subject to any terms implied by law which cannot be excluded, the developer accepts no responsibility for any loss, damage, cost or expense (wether direct or indirect) by you as a result of any error, omission or misrepresentation in information. All information is subject to change without notice.





# CENTREPIECE

Residences

APARTMENT

G.07

BEDROOM(S)      BATHROOM(S)

2

2

INTERNAL

EXTERNAL

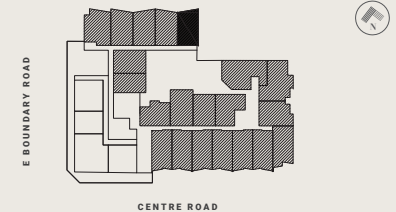
68 m<sup>2</sup>

51 m<sup>2</sup>

TOTAL

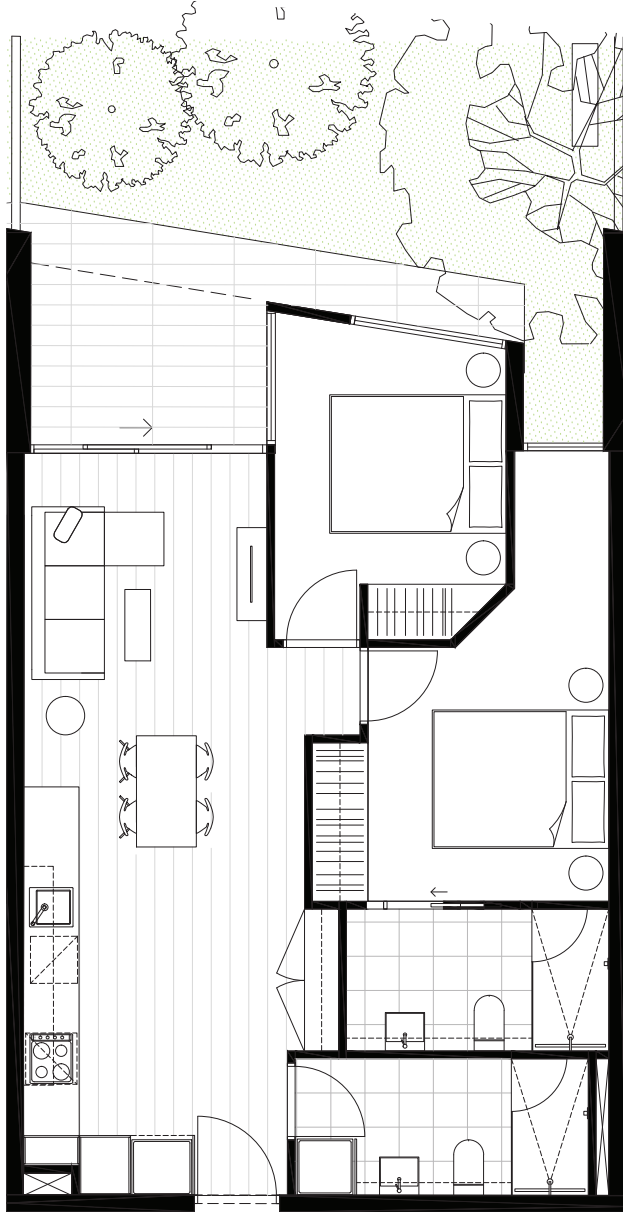
119.3 m<sup>2</sup>

GROUND LEVEL KEY PLAN



DISCLAIMER

The information provided is illustrative only and may not be relied upon. In particular the final area dimensions of any residence sold will be determined by the contract of sale and may differ from the depicted. Whilst every effort is made to provide accurate and complete information, the developer does not warrant or represent that the information in this floor plan is free from errors or omissions or is suitable for your intended use. All apartment and balcony areas are calculated as Gross Floor Area in accordance with the Method of Measurement for Residential Property as published by the Property Council of Australia. Subject to any terms implied by law which cannot be excluded, the developer accepts no responsibility for any loss, damage, cost or expense (wether direct or indirect) by you as a result of any error, omission or misrepresentation in information. All information is subject to change without notice.



# CENTREPIECE

*Residences*

APARTMENT

**G.08**

BEDROOM(S)

2

BATHROOM(S)

2

INTERNAL

68 m<sup>2</sup>

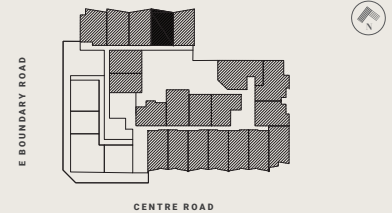
EXTERNAL

29 m<sup>2</sup>

TOTAL

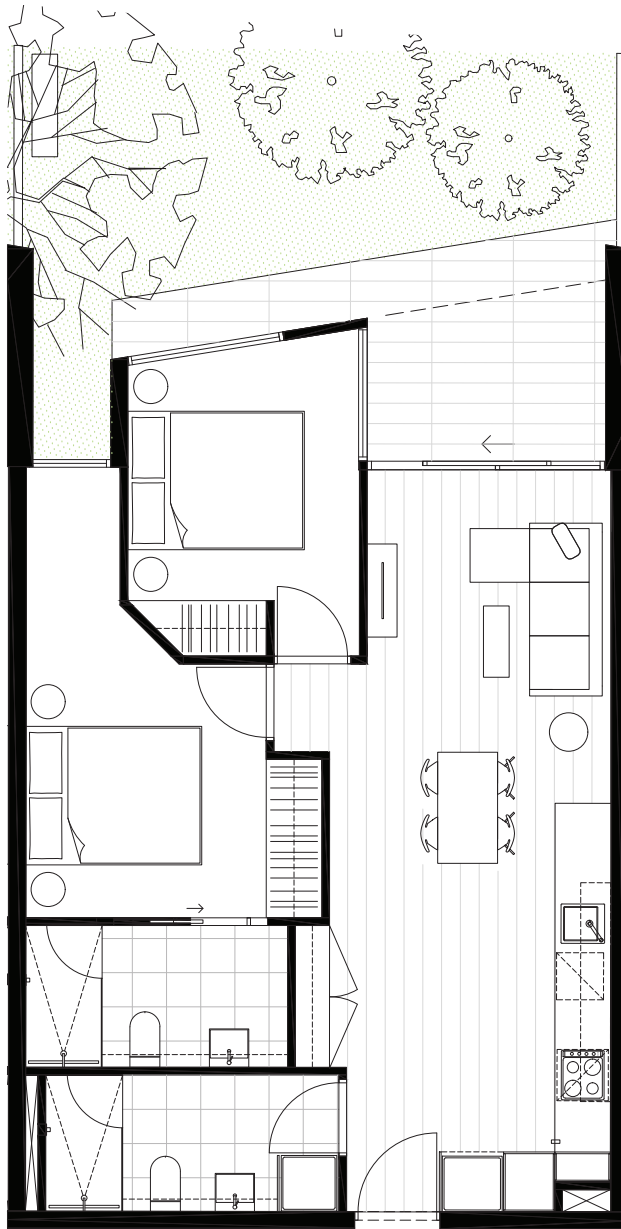
96.5 m<sup>2</sup>

GROUND LEVEL KEY PLAN



DISCLAIMER

The information provided is illustrative only and may not be relied upon. In particular the final area dimensions of any residence sold will be determined by the contract of sale and may differ from the depicted. Whilst every effort is made to provide accurate and complete information, the developer does not warrant or represent that the information in this floor plan is free from errors or omissions or is suitable for your intended use. All apartment and balcony areas are calculated as Gross Floor Area in accordance with the Method of Measurement for Residential Property as published by the Property Council of Australia. Subject to any terms implied by law which cannot be excluded, the developer accepts no responsibility for any loss, damage, cost or expense (wether direct or indirect) by you as a result of any error, omission or misrepresentation in information. All information is subject to change without notice.



# CENTREPIECE

*Residences*

APARTMENT

**G.09**

BEDROOM(S)

2

BATHROOM(S)

2

INTERNAL

68 m<sup>2</sup>

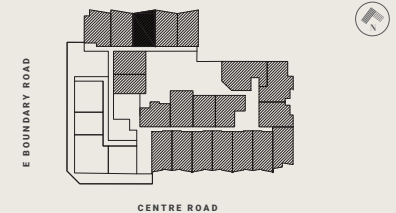
EXTERNAL

30 m<sup>2</sup>

TOTAL

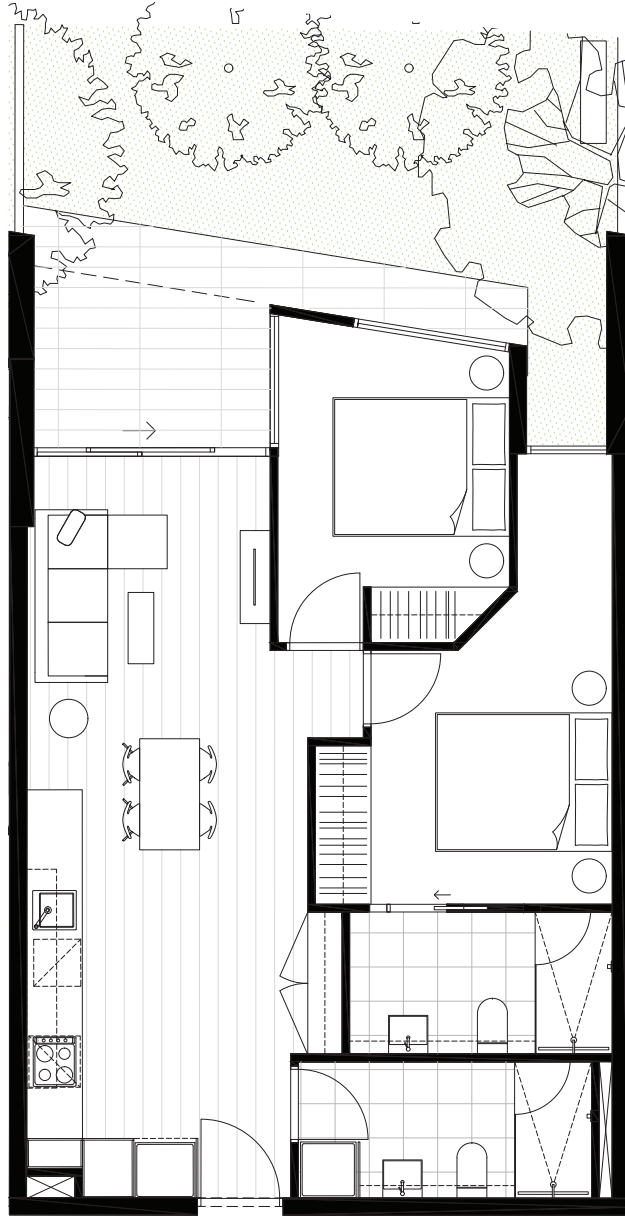
**97.2 m<sup>2</sup>**

GROUND LEVEL KEY PLAN



DISCLAIMER

The information provided is illustrative only and may not be relied upon. In particular the final area dimensions of any residence sold will be determined by the contract of sale and may differ from the depicted. Whilst every effort is made to provide accurate and complete information, the developer does not warrant or represent that the information in this floor plan is free from errors or omissions or is suitable for your intended use. All apartment and balcony areas are calculated as Gross Floor Area in accordance with the Method of Measurement for Residential Property as published by the Property Council of Australia. Subject to any terms implied by law which cannot be excluded, the developer accepts no responsibility for any loss, damage, cost or expense (wether direct or indirect) by you as a result of any error, omission or misrepresentation in information. All information is subject to change without notice.



# CENTREPIECE

Residences

APARTMENT

G.10

BEDROOM(S)

2

BATHROOM(S)

2

INTERNAL

68 m<sup>2</sup>

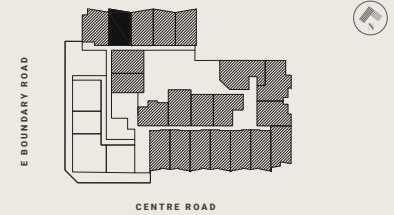
EXTERNAL

30 m<sup>2</sup>

TOTAL

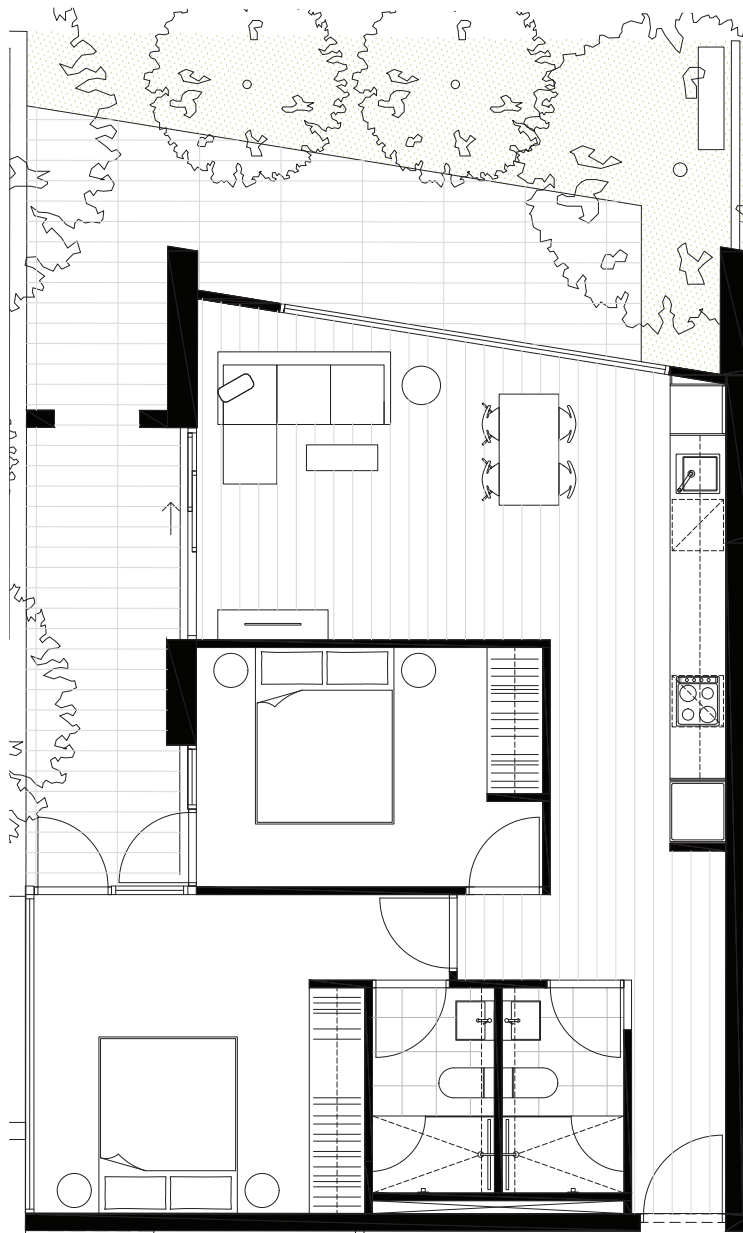
97.8 m<sup>2</sup>

GROUND LEVEL KEY PLAN



DISCLAIMER

The information provided is illustrative only and may not be relied upon. In particular the final area dimensions of any residence sold will be determined by the contract of sale and may differ from the depicted. Whilst every effort is made to provide accurate and complete information, the developer does not warrant or represent that the information in this floor plan is free from errors or omissions or is suitable for your intended use. All apartment and balcony areas are calculated as Gross Floor Area in accordance with the Method of Measurement for Residential Property as published by the Property Council of Australia. Subject to any terms implied by law which cannot be excluded, the developer accepts no responsibility for any loss, damage, cost or expense (wether direct or indirect) by you as a result of any error, omission or misrepresentation in information. All information is subject to change without notice.



# CENTREPIECE

Residences

APARTMENT

G.11

BEDROOM(S)      BATHROOM(S)

2

2

INTERNAL

EXTERNAL

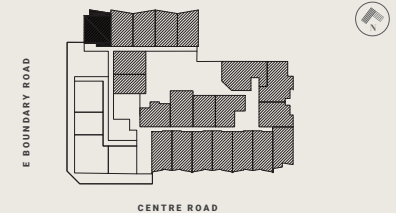
75 m<sup>2</sup>

41 m<sup>2</sup>

TOTAL

115.9 m<sup>2</sup>

GROUND LEVEL KEY PLAN



DISCLAIMER

The information provided is illustrative only and may not be relied upon. In particular the final area dimensions of any residence sold will be determined by the contract of sale and may differ from the depicted. Whilst every effort is made to provide accurate and complete information, the developer does not warrant or represent that the information in this floor plan is free from errors or omissions or is suitable for your intended use. All apartment and balcony areas are calculated as Gross Floor Area in accordance with the Method of Measurement for Residential Property as published by the Property Council of Australia. Subject to any terms implied by law which cannot be excluded, the developer accepts no responsibility for any loss, damage, cost or expense (wether direct or indirect) by you as a result of any error, omission or misrepresentation in information. All information is subject to change without notice.

# CENTREPIECE

## Residences



APARTMENT

G.12

BEDROOM(S)

2

BATHROOM(S)

2

INTERNAL

63 m<sup>2</sup>

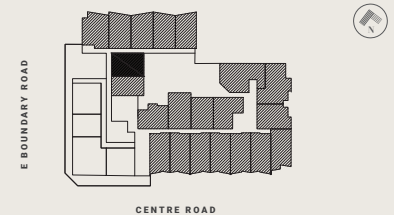
EXTERNAL

10 m<sup>2</sup>

TOTAL

73.7 m<sup>2</sup>

GROUND LEVEL KEY PLAN

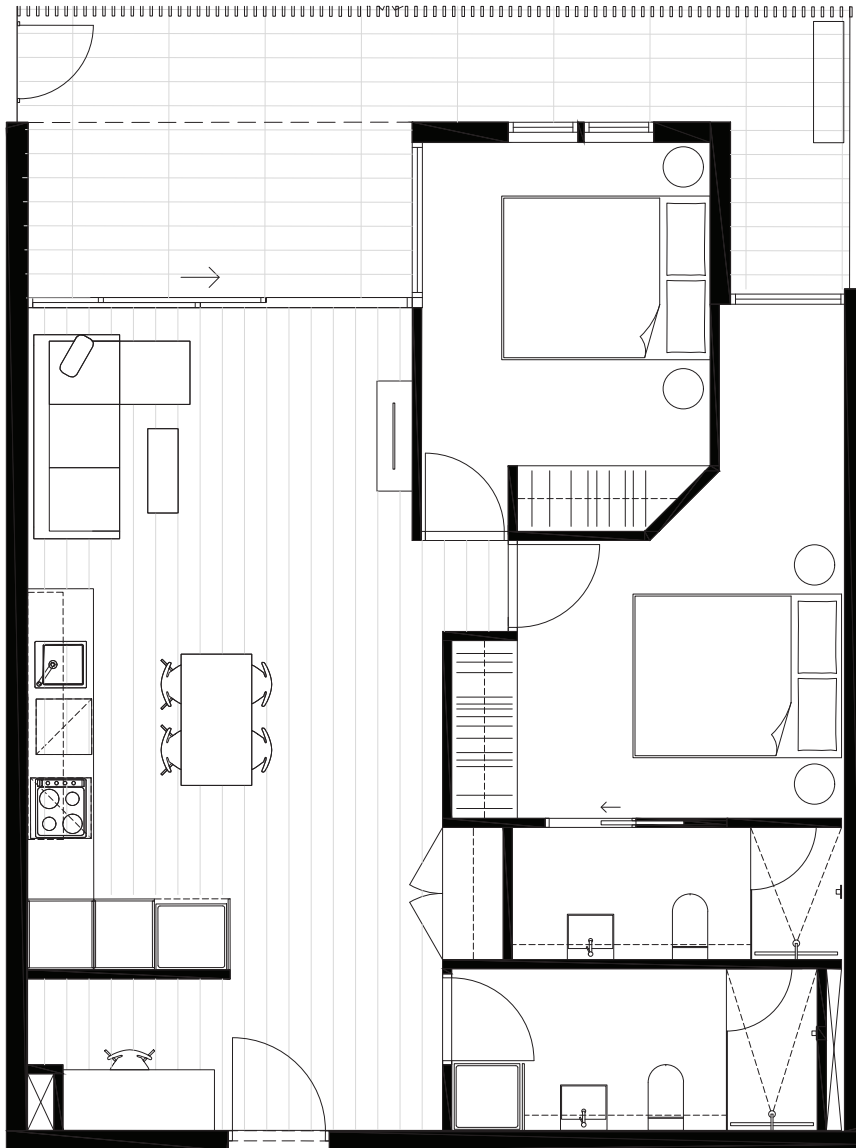


DISCLAIMER

The information provided is illustrative only and may not be relied upon. In particular the final area dimensions of any residence sold will be determined by the contract of sale and may differ from the depicted. Whilst every effort is made to provide accurate and complete information, the developer does not warrant or represent that the information in this floor plan is free from errors or omissions or is suitable for your intended use. All apartment and balcony areas are calculated as Gross Floor Area in accordance with the Method of Measurement for Residential Property as published by the Property Council of Australia. Subject to any terms implied by law which cannot be excluded, the developer accepts no responsibility for any loss, damage, cost or expense (wether direct or indirect) by you as a result of any error, omission or misrepresentation in information. All information is subject to change without notice.

# CENTREPIECE

Residences



APARTMENT

G.15

BEDROOM(S)

2

BATHROOM(S)

2

INTERNAL

76 m<sup>2</sup>

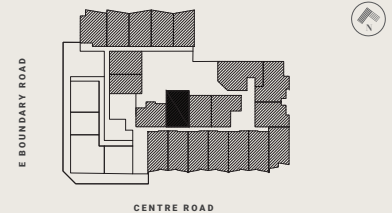
EXTERNAL

18 m<sup>2</sup>

TOTAL

94.0 m<sup>2</sup>

GROUND LEVEL KEY PLAN

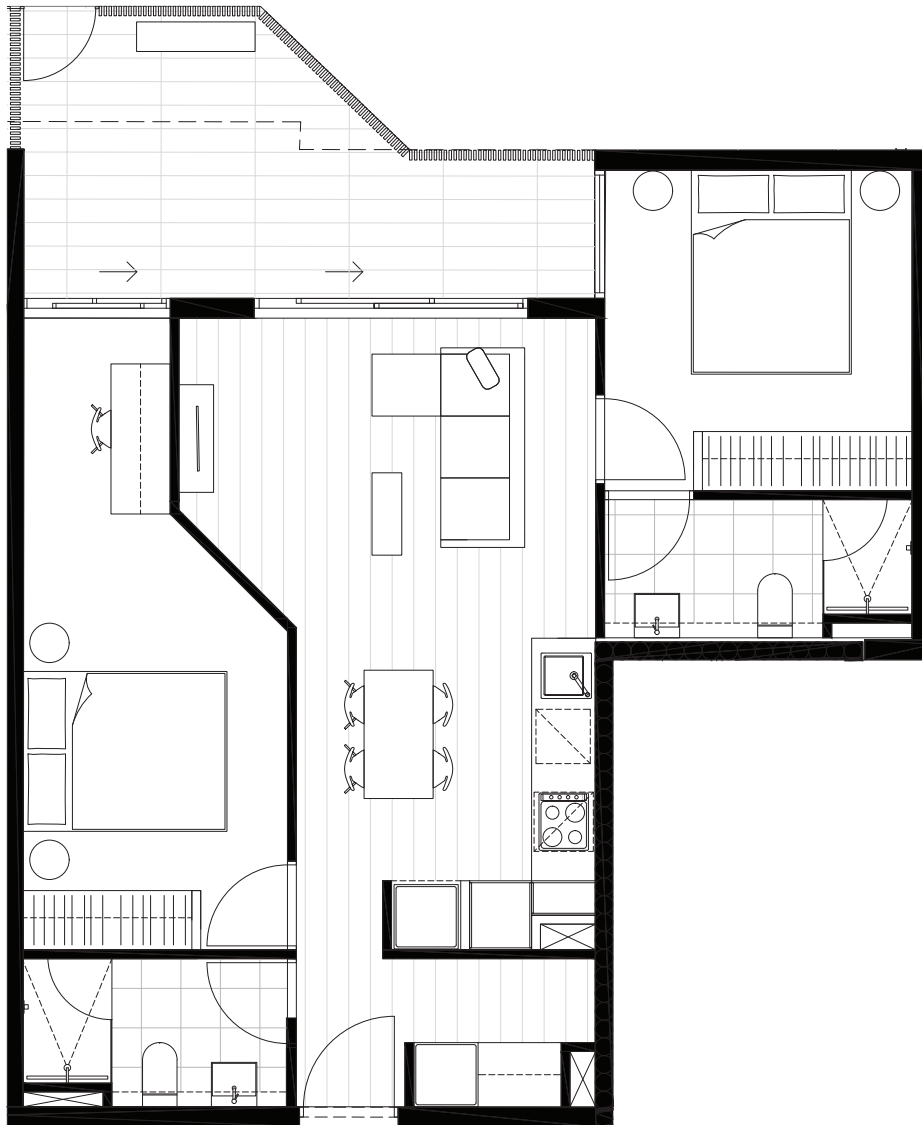


DISCLAIMER

The information provided is illustrative only and may not be relied upon. In particular the final area dimensions of any residence sold will be determined by the contract of sale and may differ from the depicted. Whilst every effort is made to provide accurate and complete information, the developer does not warrant or represent that the information in this floor plan is free from errors or omissions or is suitable for your intended use. All apartment and balcony areas are calculated as Gross Floor Area in accordance with the Method of Measurement for Residential Property as published by the Property Council of Australia. Subject to any terms implied by law which cannot be excluded, the developer accepts no responsibility for any loss, damage, cost or expense (wether direct or indirect) by you as a result of any error, omission or misrepresentation in information. All information is subject to change without notice.

# CENTREPIECE

Residences



APARTMENT

G.17

BEDROOM(S)

2

BATHROOM(S)

2

INTERNAL

66 m<sup>2</sup>

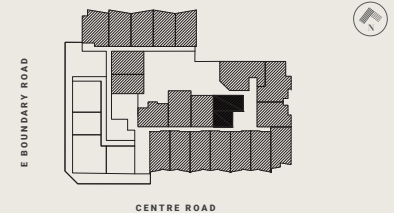
EXTERNAL

14 m<sup>2</sup>

TOTAL

79.1 m<sup>2</sup>

GROUND LEVEL KEY PLAN



DISCLAIMER

The information provided is illustrative only and may not be relied upon. In particular the final area dimensions of any residence sold will be determined by the contract of sale and may differ from the depicted. Whilst every effort is made to provide accurate and complete information, the developer does not warrant or represent that the information in this floor plan is free from errors or omissions or is suitable for your intended use. All apartment and balcony areas are calculated as Gross Floor Area in accordance with the Method of Measurement for Residential Property as published by the Property Council of Australia. Subject to any terms implied by law which cannot be excluded, the developer accepts no responsibility for any loss, damage, cost or expense (wether direct or indirect) by you as a result of any error, omission or misrepresentation in information. All information is subject to change without notice.



# CENTREPIECE

Residences



APARTMENT

G.21

BEDROOM(S)      BATHROOM(S)

2                      2

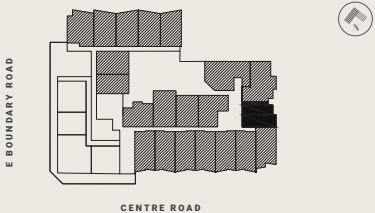
INTERNAL              EXTERNAL

73 m<sup>2</sup>                  22 m<sup>2</sup>

TOTAL

94.7 m<sup>2</sup>

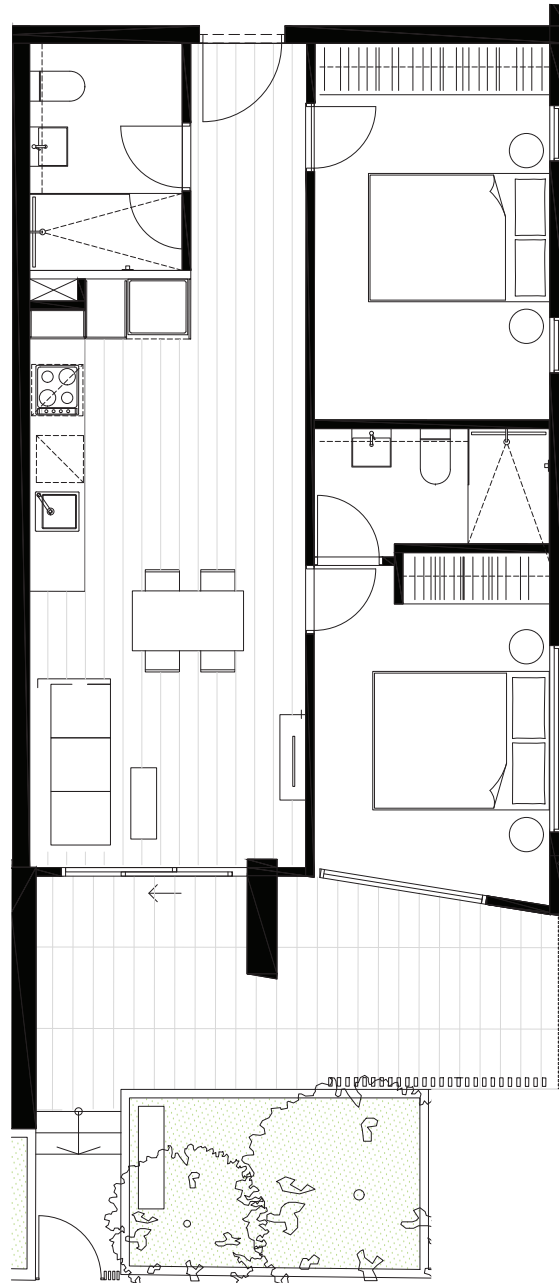
GROUND LEVEL KEY PLAN



DISCLAIMER

The information provided is illustrative only and may not be relied upon. In particular the final area dimensions of any residence sold will be determined by the contract of sale and may differ from the depicted. Whilst every effort is made to provide accurate and complete information, the developer does not warrant or represent that the information in this floor plan is free from errors or omissions or is suitable for your intended use. All apartment and balcony areas are calculated as Gross Floor Area in accordance with the Method of Measurement for Residential Property as published by the Property Council of Australia. Subject to any terms implied by law which cannot be excluded, the developer accepts no responsibility for any loss, damage, cost or expense (wether direct or indirect) by you as a result of any error, omission or misrepresentation in information. All information is subject to change without notice.





# CENTREPIECE

*Residences*

APARTMENT

**G.22**

BEDROOM(S)

2

BATHROOM(S)

2

INTERNAL

64 m<sup>2</sup>

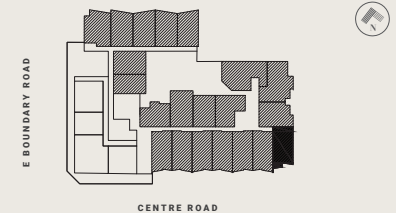
EXTERNAL

26 m<sup>2</sup>

TOTAL

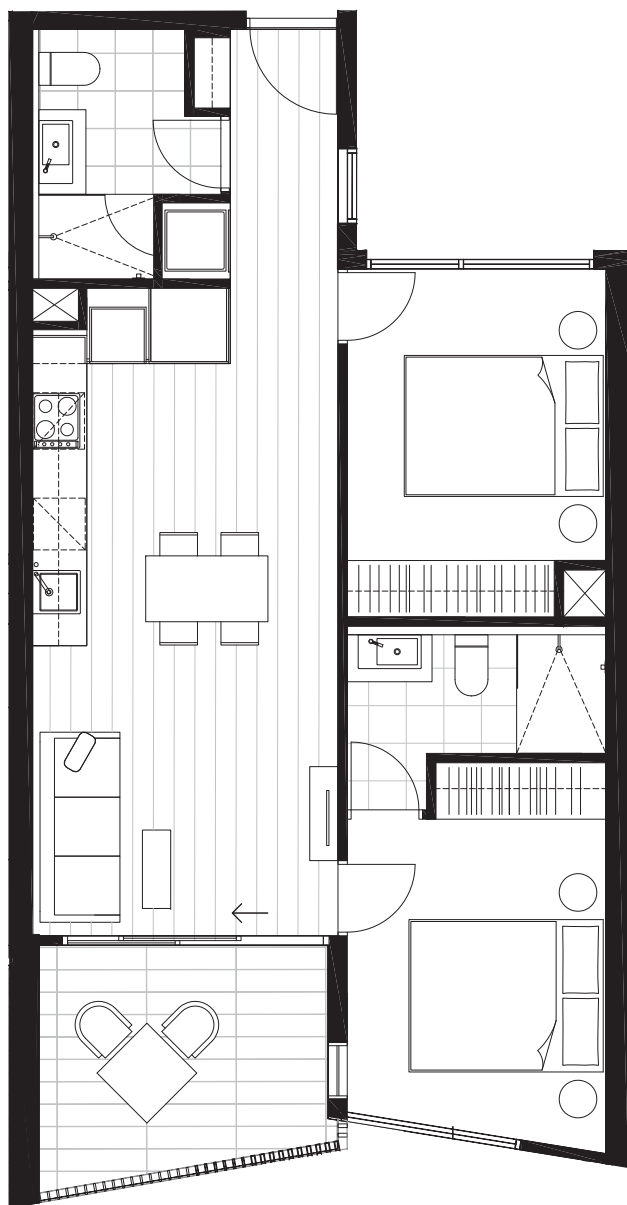
**89.7 m<sup>2</sup>**

GROUND LEVEL KEY PLAN



DISCLAIMER

The information provided is illustrative only and may not be relied upon. In particular the final area dimensions of any residence sold will be determined by the contract of sale and may differ from the depicted. Whilst every effort is made to provide accurate and complete information, the developer does not warrant or represent that the information in this floor plan is free from errors or omissions or is suitable for your intended use. All apartment and balcony areas are calculated as Gross Floor Area in accordance with the Method of Measurement for Residential Property as published by the Property Council of Australia. Subject to any terms implied by law which cannot be excluded, the developer accepts no responsibility for any loss, damage, cost or expense (wether direct or indirect) by you as a result of any error, omission or misrepresentation in information. All information is subject to change without notice.



# CENTREPIECE

*Residences*

APARTMENT

1.03

BEDROOM(S)

2

BATHROOM(S)

2

INTERNAL

63 m<sup>2</sup>

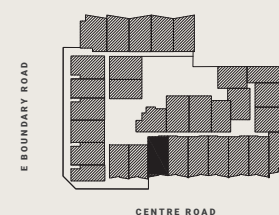
EXTERNAL

8 m<sup>2</sup>

TOTAL

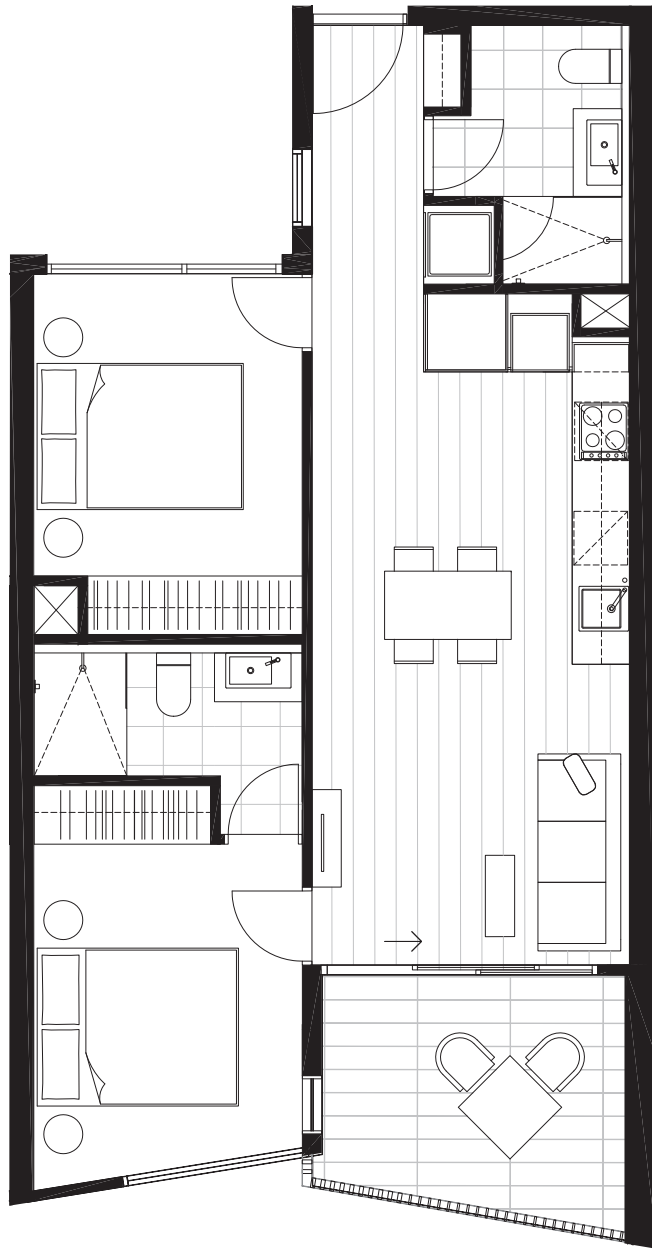
71.0 m<sup>2</sup>

LEVEL ONE KEY PLAN



DISCLAIMER

The information provided is illustrative only and may not be relied upon. In particular the final area dimensions of any residence sold will be determined by the contract of sale and may differ from the depicted. Whilst every effort is made to provide accurate and complete information, the developer does not warrant or represent that the information in this floor plan is free from errors or omissions or is suitable for your intended use. All apartment and balcony areas are calculated as Gross Floor Area in accordance with the Method of Measurement for Residential Property as published by the Property Council of Australia. Subject to any terms implied by law which cannot be excluded, the developer accepts no responsibility for any loss, damage, cost or expense (wether direct or indirect) by you as a result of any error, omission or misrepresentation in information. All information is subject to change without notice.



# CENTREPIECE

*Residences*

APARTMENT

1.04

BEDROOM(S)

2

BATHROOM(S)

2

INTERNAL

62 m<sup>2</sup>

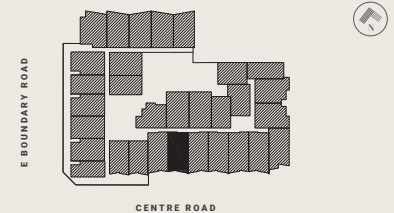
EXTERNAL

8 m<sup>2</sup>

TOTAL

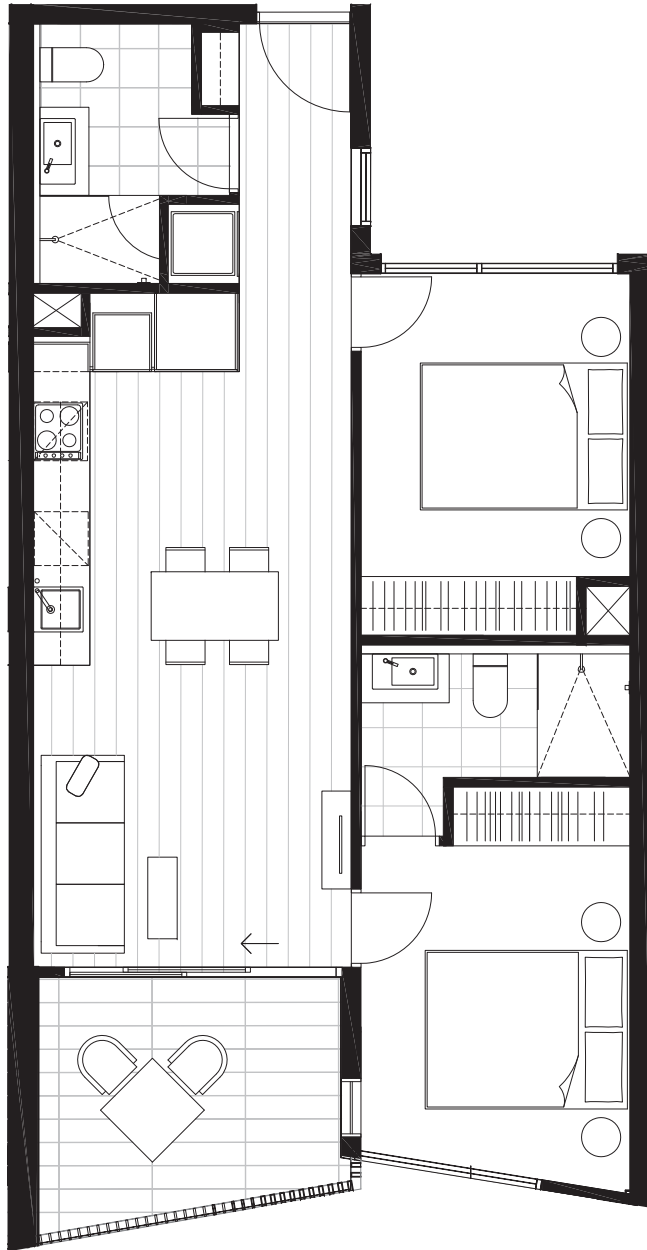
70.4 m<sup>2</sup>

LEVEL ONE KEY PLAN



DISCLAIMER

The information provided is illustrative only and may not be relied upon. In particular the final area dimensions of any residence sold will be determined by the contract of sale and may differ from the depicted. Whilst every effort is made to provide accurate and complete information, the developer does not warrant or represent that the information in this floor plan is free from errors or omissions or is suitable for your intended use. All apartment and balcony areas are calculated as Gross Floor Area in accordance with the Method of Measurement for Residential Property as published by the Property Council of Australia. Subject to any terms implied by law which cannot be excluded, the developer accepts no responsibility for any loss, damage, cost or expense (wether direct or indirect) by you as a result of any error, omission or misrepresentation in information. All information is subject to change without notice.



# CENTREPIECE

*Residences*

APARTMENT

1.05

BEDROOM(S)

2

BATHROOM(S)

2

INTERNAL

62 m<sup>2</sup>

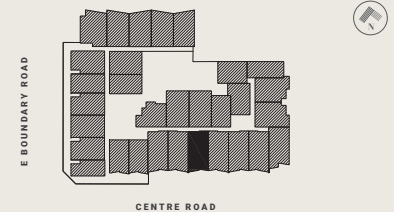
EXTERNAL

8 m<sup>2</sup>

TOTAL

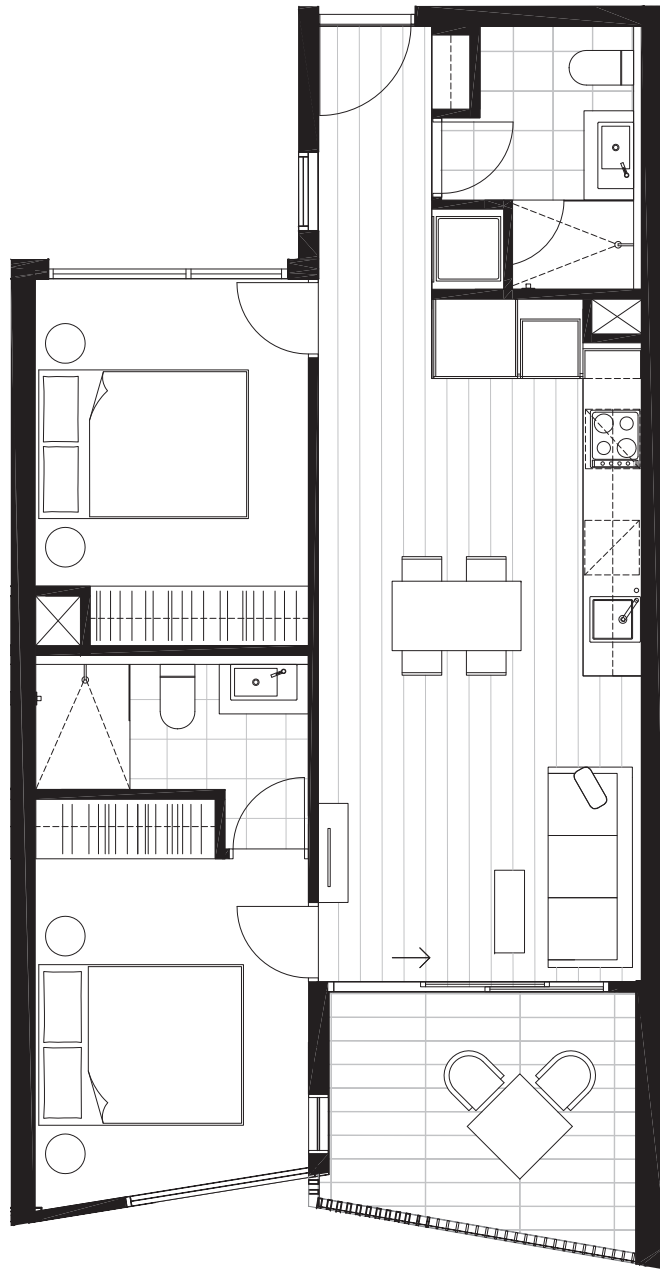
70.4 m<sup>2</sup>

LEVEL ONE KEY PLAN



DISCLAIMER

The information provided is illustrative only and may not be relied upon. In particular the final area dimensions of any residence sold will be determined by the contract of sale and may differ from the depicted. Whilst every effort is made to provide accurate and complete information, the developer does not warrant or represent that the information in this floor plan is free from errors or omissions or is suitable for your intended use. All apartment and balcony areas are calculated as Gross Floor Area in accordance with the Method of Measurement for Residential Property as published by the Property Council of Australia. Subject to any terms implied by law which cannot be excluded, the developer accepts no responsibility for any loss, damage, cost or expense (wether direct or indirect) by you as a result of any error, omission or misrepresentation in information. All information is subject to change without notice.



# CENTREPIECE

*Residences*

APARTMENT

1.06

BEDROOM(S)

2

BATHROOM(S)

2

INTERNAL

62 m<sup>2</sup>

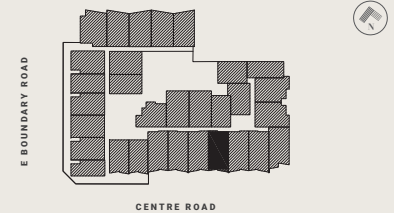
EXTERNAL

8 m<sup>2</sup>

TOTAL

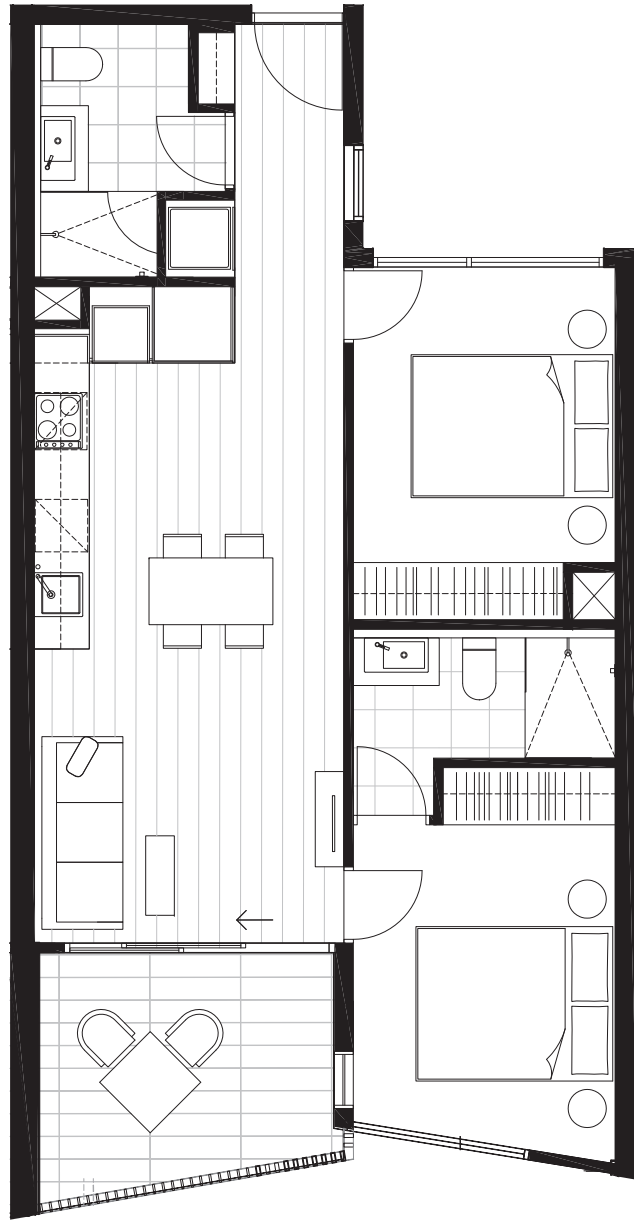
70.4 m<sup>2</sup>

LEVEL ONE KEY PLAN



DISCLAIMER

The information provided is illustrative only and may not be relied upon. In particular the final area dimensions of any residence sold will be determined by the contract of sale and may differ from the depicted. Whilst every effort is made to provide accurate and complete information, the developer does not warrant or represent that the information in this floor plan is free from errors or omissions or is suitable for your intended use. All apartment and balcony areas are calculated as Gross Floor Area in accordance with the Method of Measurement for Residential Property as published by the Property Council of Australia. Subject to any terms implied by law which cannot be excluded, the developer accepts no responsibility for any loss, damage, cost or expense (wether direct or indirect) by you as a result of any error, omission or misrepresentation in information. All information is subject to change without notice.



# CENTREPIECE

Residences

APARTMENT

1.07

BEDROOM(S)

2

BATHROOM(S)

2

INTERNAL

62 m<sup>2</sup>

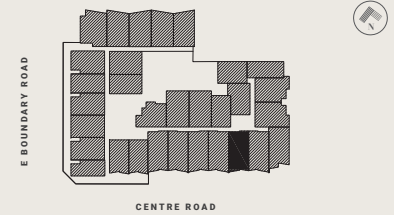
EXTERNAL

8 m<sup>2</sup>

TOTAL

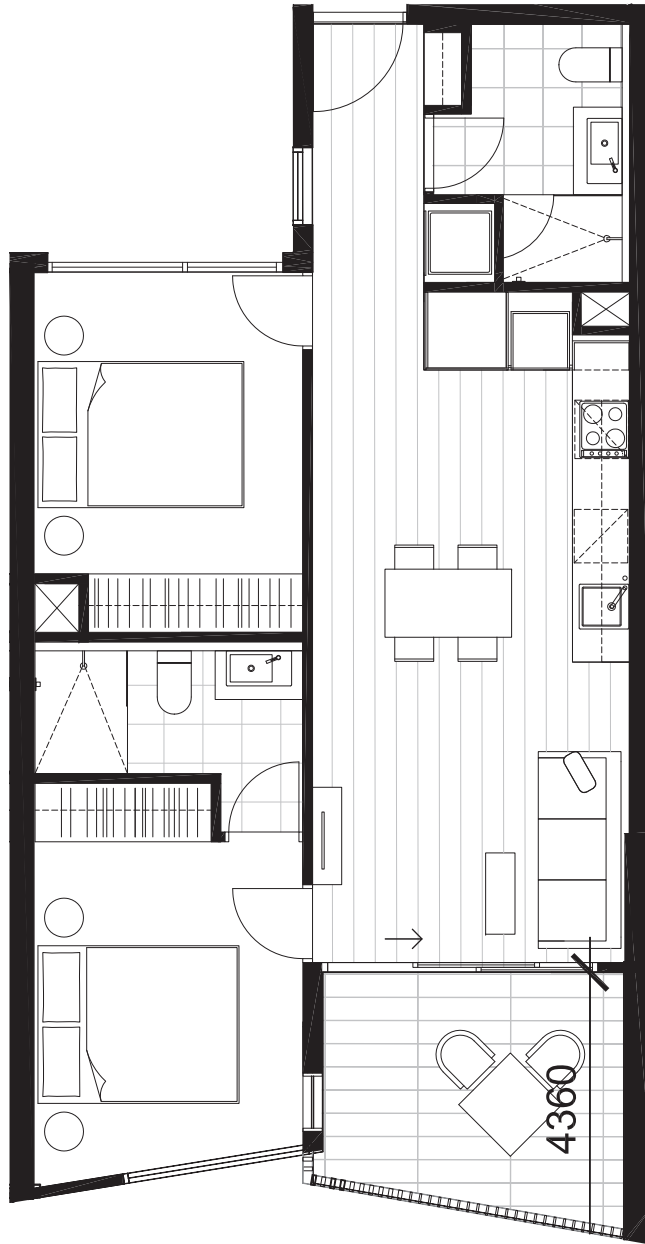
70.4 m<sup>2</sup>

LEVEL ONE KEY PLAN



DISCLAIMER

The information provided is illustrative only and may not be relied upon. In particular the final area dimensions of any residence sold will be determined by the contract of sale and may differ from the depicted. Whilst every effort is made to provide accurate and complete information, the developer does not warrant or represent that the information in this floor plan is free from errors or omissions or is suitable for your intended use. All apartment and balcony areas are calculated as Gross Floor Area in accordance with the Method of Measurement for Residential Property as published by the Property Council of Australia. Subject to any terms implied by law which cannot be excluded, the developer accepts no responsibility for any loss, damage, cost or expense (wether direct or indirect) by you as a result of any error, omission or misrepresentation in information. All information is subject to change without notice.



# CENTREPIECE

*Residences*

APARTMENT

1.08

BEDROOM(S)

2

BATHROOM(S)

2

INTERNAL

62 m<sup>2</sup>

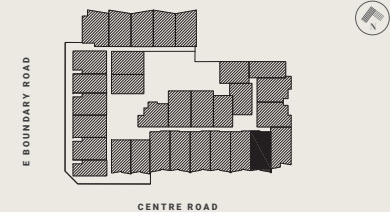
EXTERNAL

8 m<sup>2</sup>

TOTAL

70.4 m<sup>2</sup>

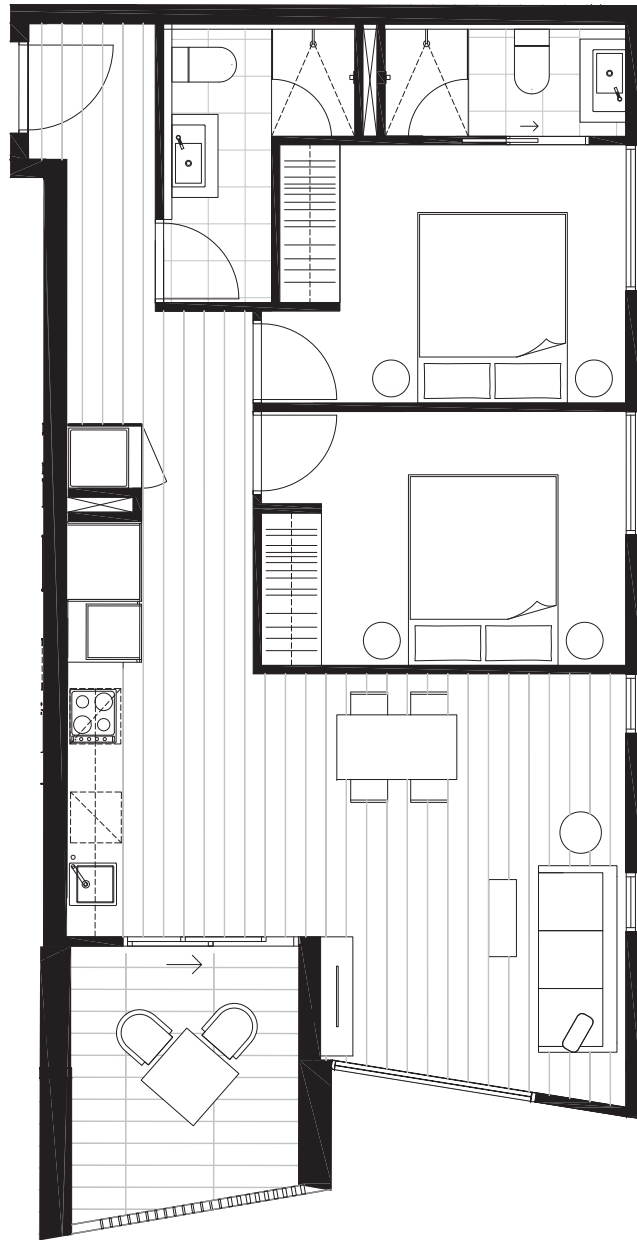
LEVEL ONE KEY PLAN



DISCLAIMER

The information provided is illustrative only and may not be relied upon. In particular the final area dimensions of any residence sold will be determined by the contract of sale and may differ from the depicted. Whilst every effort is made to provide accurate and complete information, the developer does not warrant or represent that the information in this floor plan is free from errors or omissions or is suitable for your intended use. All apartment and balcony areas are calculated as Gross Floor Area in accordance with the Method of Measurement for Residential Property as published by the Property Council of Australia. Subject to any terms implied by law which cannot be excluded, the developer accepts no responsibility for any loss, damage, cost or expense (wether direct or indirect) by you as a result of any error, omission or misrepresentation in information. All information is subject to change without notice.





# CENTREPIECE

*Residences*

APARTMENT

1.09

BEDROOM(S)

2

BATHROOM(S)

2

INTERNAL

71 m<sup>2</sup>

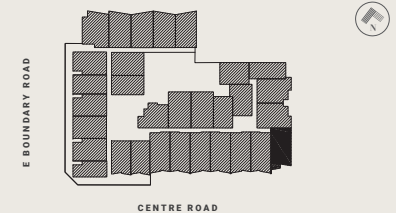
EXTERNAL

8 m<sup>2</sup>

TOTAL

79.5 m<sup>2</sup>

LEVEL ONE KEY PLAN



DISCLAIMER

The information provided is illustrative only and may not be relied upon. In particular the final area dimensions of any residence sold will be determined by the contract of sale and may differ from the depicted. Whilst every effort is made to provide accurate and complete information, the developer does not warrant or represent that the information in this floor plan is free from errors or omissions or is suitable for your intended use. All apartment and balcony areas are calculated as Gross Floor Area in accordance with the Method of Measurement for Residential Property as published by the Property Council of Australia. Subject to any terms implied by law which cannot be excluded, the developer accepts no responsibility for any loss, damage, cost or expense (wether direct or indirect) by you as a result of any error, omission or misrepresentation in information. All information is subject to change without notice.

# CENTREPIECE

Residences



APARTMENT

1.10

BEDROOM(S)

2

BATHROOM(S)

2

INTERNAL

67 m<sup>2</sup>

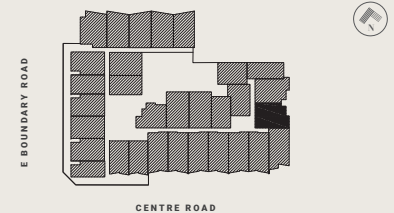
EXTERNAL

8 m<sup>2</sup>

TOTAL

75.2 m<sup>2</sup>

LEVEL ONE KEY PLAN



DISCLAIMER

The information provided is illustrative only and may not be relied upon. In particular the final area dimensions of any residence sold will be determined by the contract of sale and may differ from the depicted. Whilst every effort is made to provide accurate and complete information, the developer does not warrant or represent that the information in this floor plan is free from errors or omissions or is suitable for your intended use. All apartment and balcony areas are calculated as Gross Floor Area in accordance with the Method of Measurement for Residential Property as published by the Property Council of Australia. Subject to any terms implied by law which cannot be excluded, the developer accepts no responsibility for any loss, damage, cost or expense (wether direct or indirect) by you as a result of any error, omission or misrepresentation in information. All information is subject to change without notice.

# CENTREPIECE

Residences



APARTMENT

1.11

BEDROOM(S)

2

BATHROOM(S)

2

INTERNAL

67 m<sup>2</sup>

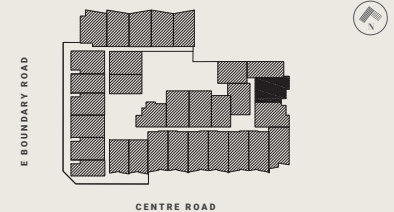
EXTERNAL

10 m<sup>2</sup>

TOTAL

77.0 m<sup>2</sup>

LEVEL ONE KEY PLAN



DISCLAIMER

The information provided is illustrative only and may not be relied upon. In particular the final area dimensions of any residence sold will be determined by the contract of sale and may differ from the depicted. Whilst every effort is made to provide accurate and complete information, the developer does not warrant or represent that the information in this floor plan is free from errors or omissions or is suitable for your intended use. All apartment and balcony areas are calculated as Gross Floor Area in accordance with the Method of Measurement for Residential Property as published by the Property Council of Australia. Subject to any terms implied by law which cannot be excluded, the developer accepts no responsibility for any loss, damage, cost or expense (wether direct or indirect) by you as a result of any error, omission or misrepresentation in information. All information is subject to change without notice.



# CENTREPIECE

*Residences*

APARTMENT

1.15

BEDROOM(S)

2

BATHROOM(S)

2

INTERNAL

65 m<sup>2</sup>

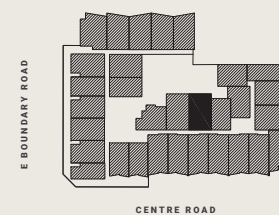
EXTERNAL

8 m<sup>2</sup>

TOTAL

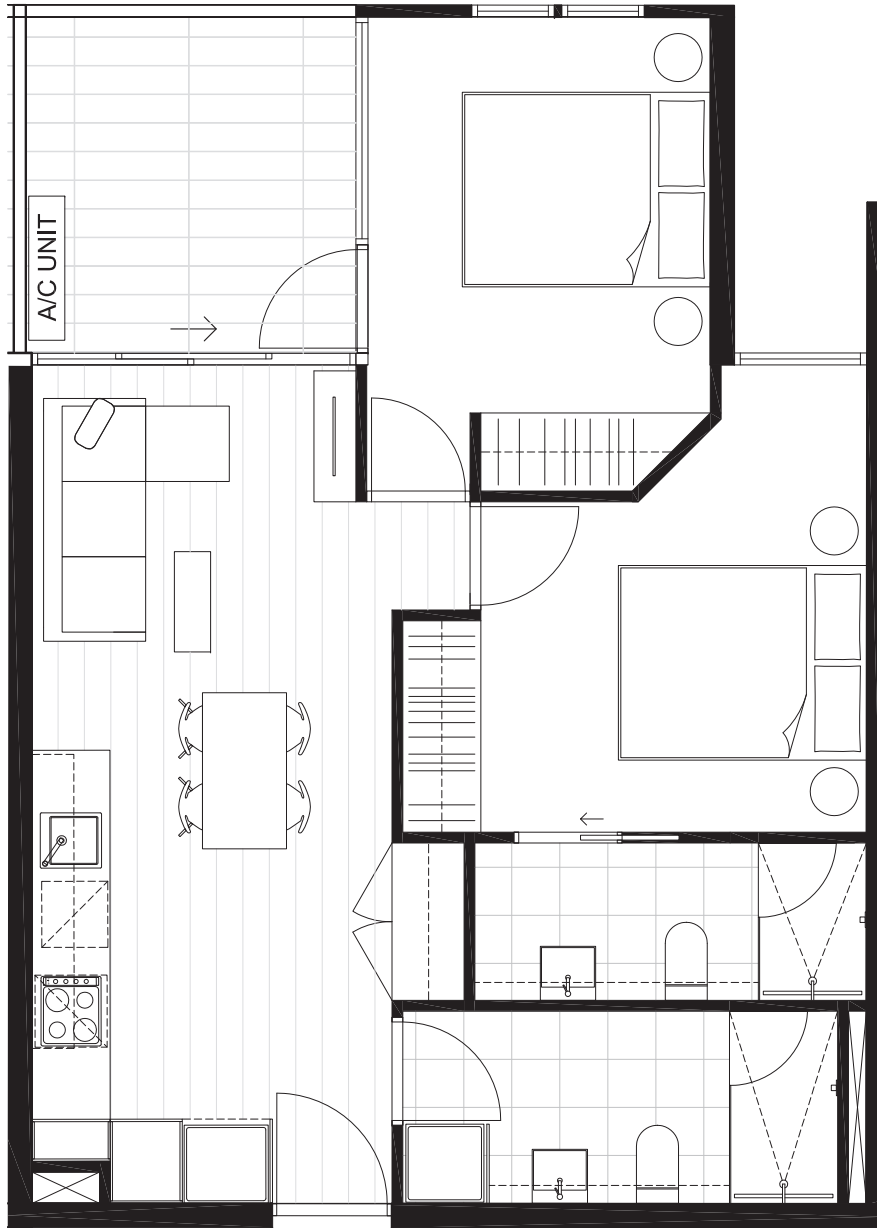
73.2 m<sup>2</sup>

LEVEL ONE KEY PLAN



DISCLAIMER

The information provided is illustrative only and may not be relied upon. In particular the final area dimensions of any residence sold will be determined by the contract of sale and may differ from the depicted. Whilst every effort is made to provide accurate and complete information, the developer does not warrant or represent that the information in this floor plan is free from errors or omissions or is suitable for your intended use. All apartment and balcony areas are calculated as Gross Floor Area in accordance with the Method of Measurement for Residential Property as published by the Property Council of Australia. Subject to any terms implied by law which cannot be excluded, the developer accepts no responsibility for any loss, damage, cost or expense (wether direct or indirect) by you as a result of any error, omission or misrepresentation in information. All information is subject to change without notice.



# CENTREPIECE

*Residences*

APARTMENT

1.16

BEDROOM(S)

2

BATHROOM(S)

2

INTERNAL

61 m<sup>2</sup>

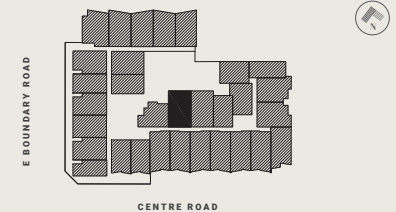
EXTERNAL

8 m<sup>2</sup>

TOTAL

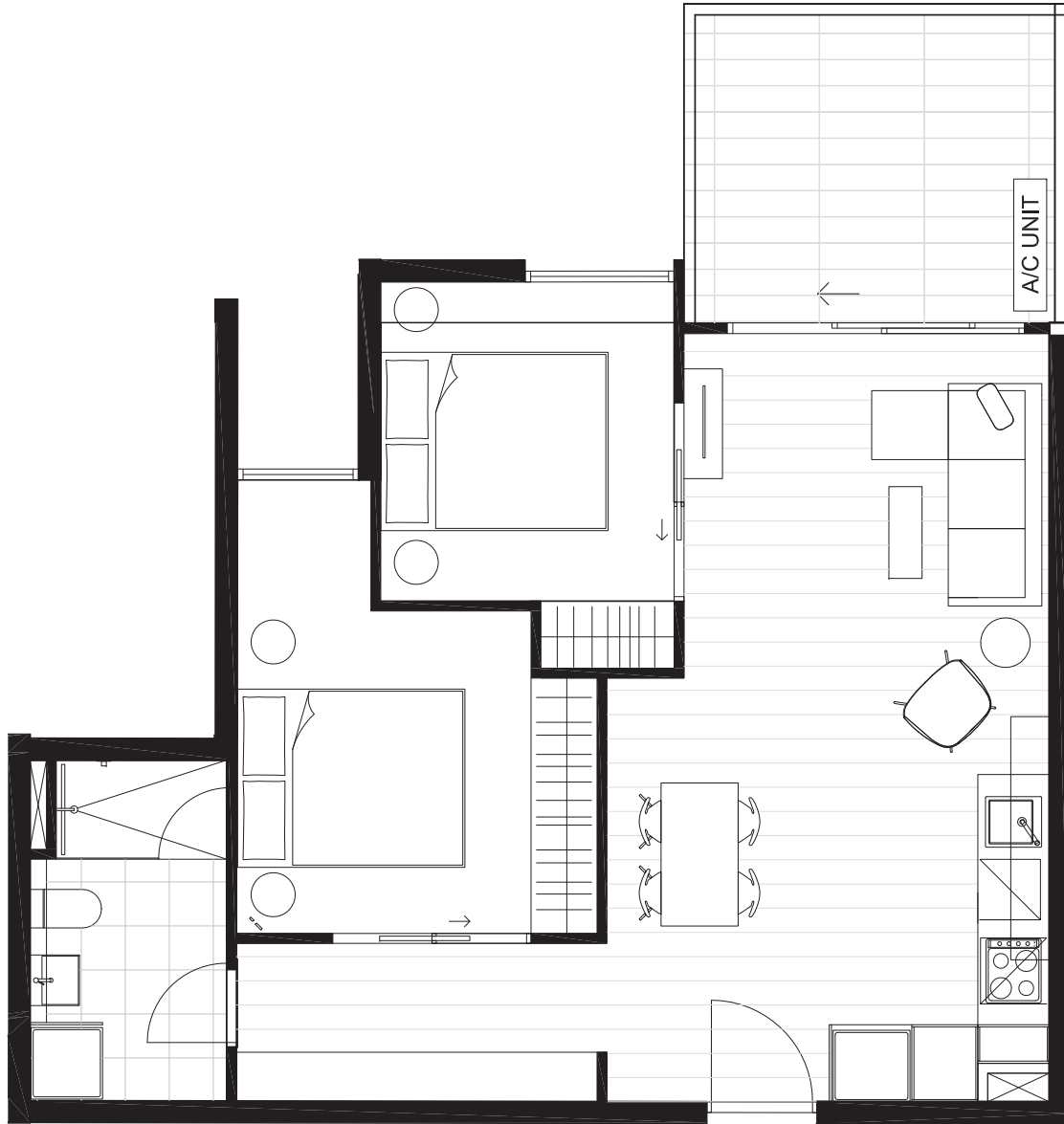
69.1 m<sup>2</sup>

LEVEL ONE KEY PLAN



DISCLAIMER

The information provided is illustrative only and may not be relied upon. In particular the final area dimensions of any residence sold will be determined by the contract of sale and may differ from the depicted. Whilst every effort is made to provide accurate and complete information, the developer does not warrant or represent that the information in this floor plan is free from errors or omissions or is suitable for your intended use. All apartment and balcony areas are calculated as Gross Floor Area in accordance with the Method of Measurement for Residential Property as published by the Property Council of Australia. Subject to any terms implied by law which cannot be excluded, the developer accepts no responsibility for any loss, damage, cost or expense (wether direct or indirect) by you as a result of any error, omission or misrepresentation in information. All information is subject to change without notice.



# CENTREPIECE

Residences

APARTMENT

1.17

BEDROOM(S)

2

BATHROOM(S)

1

INTERNAL

61 m<sup>2</sup>

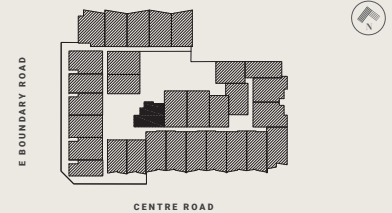
EXTERNAL

10 m<sup>2</sup>

TOTAL

71.2 m<sup>2</sup>

LEVEL ONE KEY PLAN



DISCLAIMER

The information provided is illustrative only and may not be relied upon. In particular the final area dimensions of any residence sold will be determined by the contract of sale and may differ from the depicted. Whilst every effort is made to provide accurate and complete information, the developer does not warrant or represent that the information in this floor plan is free from errors or omissions or is suitable for your intended use. All apartment and balcony areas are calculated as Gross Floor Area in accordance with the Method of Measurement for Residential Property as published by the Property Council of Australia. Subject to any terms implied by law which cannot be excluded, the developer accepts no responsibility for any loss, damage, cost or expense (wether direct or indirect) by you as a result of any error, omission or misrepresentation in information. All information is subject to change without notice.

# CENTREPIECE

Residences



APARTMENT

1.19

BEDROOM(S)

2

BATHROOM(S)

2

INTERNAL

63 m<sup>2</sup>

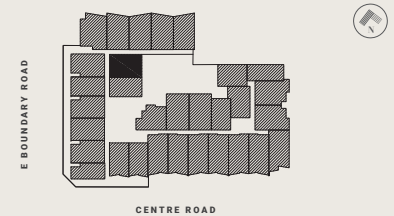
EXTERNAL

10 m<sup>2</sup>

TOTAL

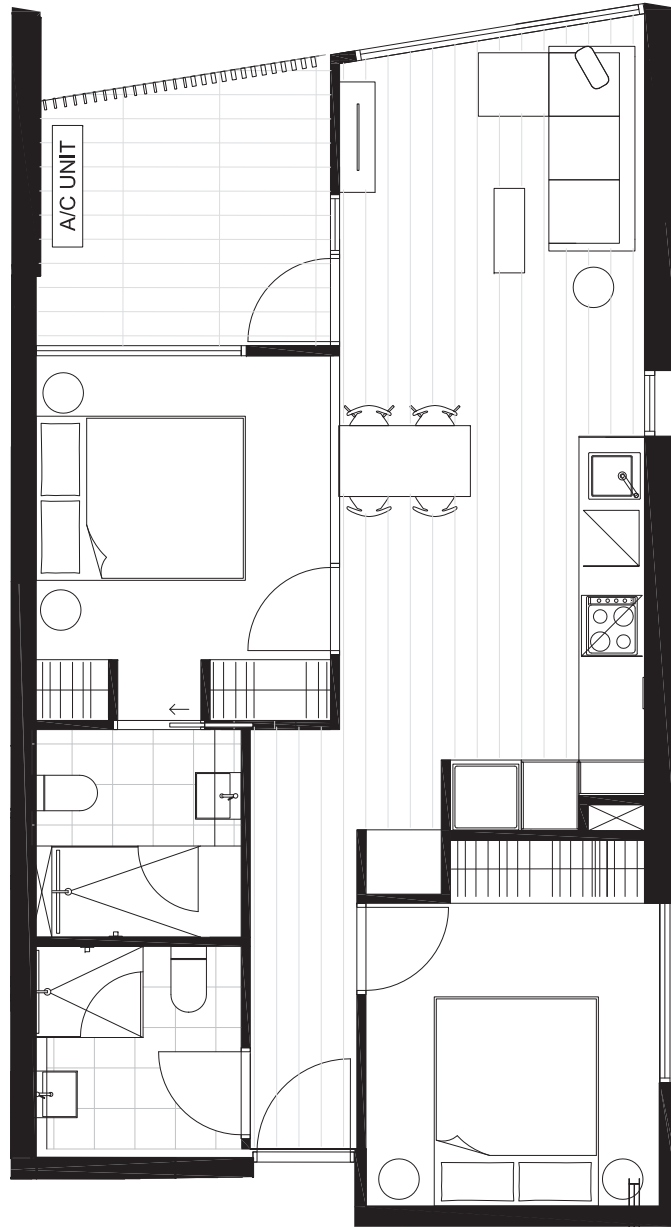
73.8 m<sup>2</sup>

LEVEL ONE KEY PLAN



DISCLAIMER

The information provided is illustrative only and may not be relied upon. In particular the final area dimensions of any residence sold will be determined by the contract of sale and may differ from the depicted. Whilst every effort is made to provide accurate and complete information, the developer does not warrant or represent that the information in this floor plan is free from errors or omissions or is suitable for your intended use. All apartment and balcony areas are calculated as Gross Floor Area in accordance with the Method of Measurement for Residential Property as published by the Property Council of Australia. Subject to any terms implied by law which cannot be excluded, the developer accepts no responsibility for any loss, damage, cost or expense (wether direct or indirect) by you as a result of any error, omission or misrepresentation in information. All information is subject to change without notice.



# CENTREPIECE

Residences

APARTMENT

1.20

BEDROOM(S)

2

BATHROOM(S)

2

INTERNAL

66 m<sup>2</sup>

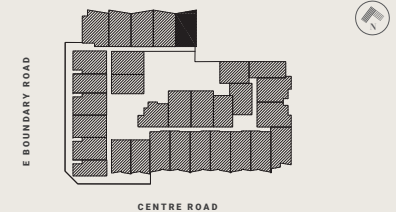
EXTERNAL

8 m<sup>2</sup>

TOTAL

73.6 m<sup>2</sup>

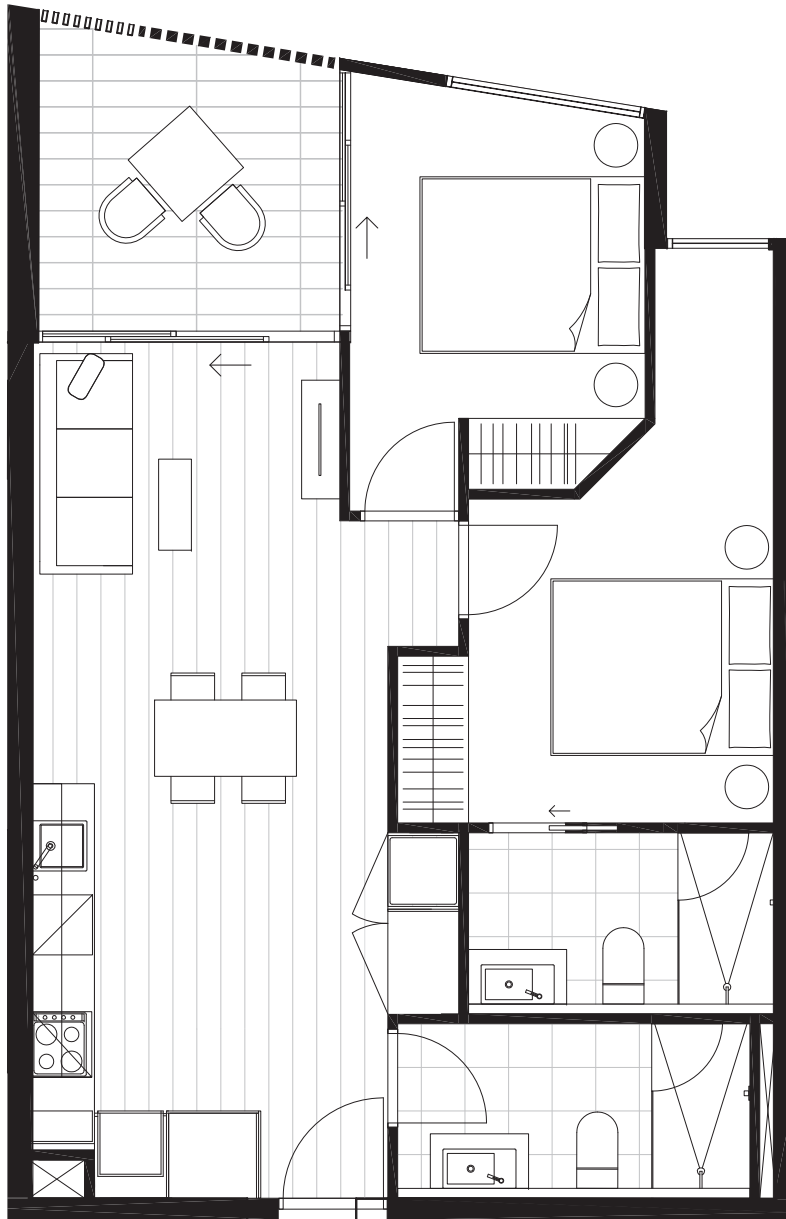
LEVEL ONE KEY PLAN



DISCLAIMER

The information provided is illustrative only and may not be relied upon. In particular the final area dimensions of any residence sold will be determined by the contract of sale and may differ from the depicted. Whilst every effort is made to provide accurate and complete information, the developer does not warrant or represent that the information in this floor plan is free from errors or omissions or is suitable for your intended use. All apartment and balcony areas are calculated as Gross Floor Area in accordance with the Method of Measurement for Residential Property as published by the Property Council of Australia. Subject to any terms implied by law which cannot be excluded, the developer accepts no responsibility for any loss, damage, cost or expense (wether direct or indirect) by you as a result of any error, omission or misrepresentation in information. All information is subject to change without notice.





# CENTREPIECE

*Residences*

APARTMENT

1.21

BEDROOM(S)

2

BATHROOM(S)

2

INTERNAL

65 m<sup>2</sup>

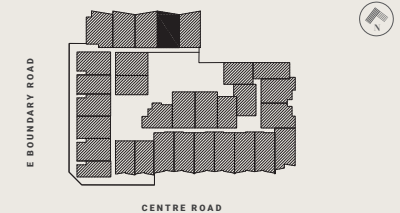
EXTERNAL

8 m<sup>2</sup>

TOTAL

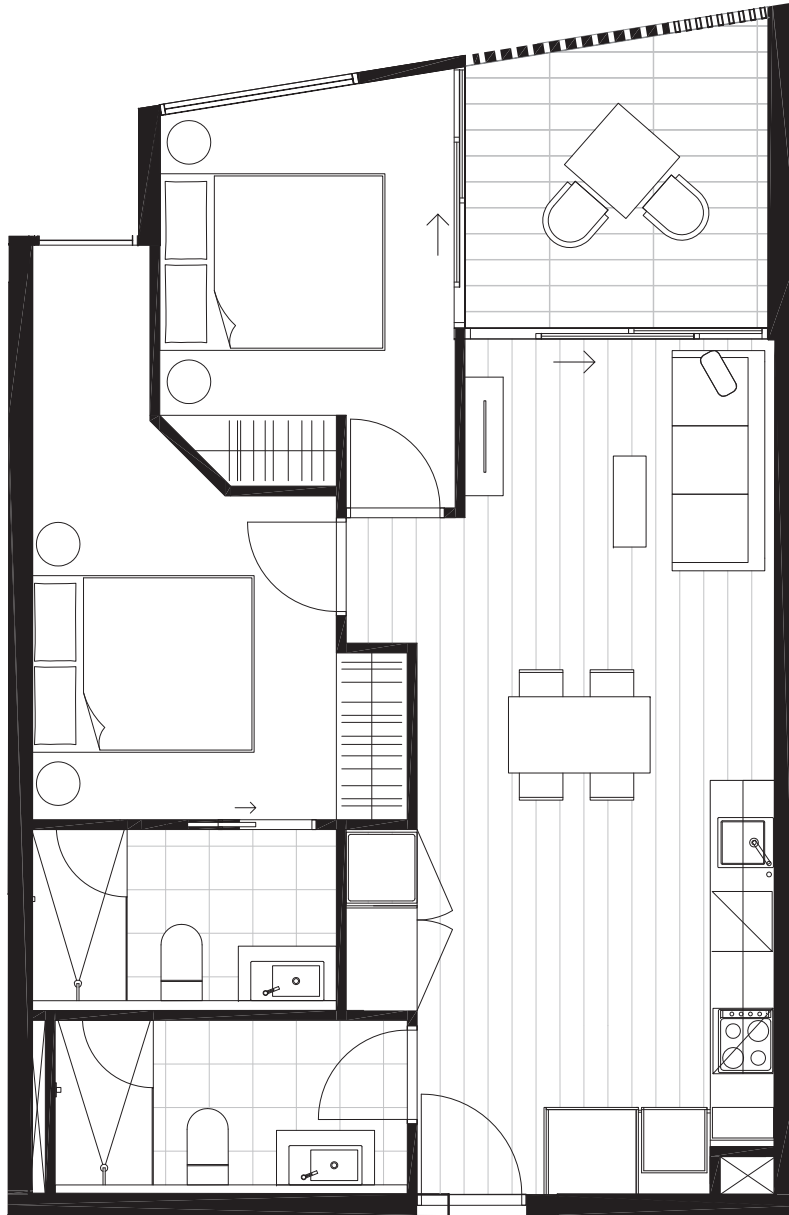
73.3 m<sup>2</sup>

LEVEL ONE KEY PLAN



DISCLAIMER

The information provided is illustrative only and may not be relied upon. In particular the final area dimensions of any residence sold will be determined by the contract of sale and may differ from the depicted. Whilst every effort is made to provide accurate and complete information, the developer does not warrant or represent that the information in this floor plan is free from errors or omissions or is suitable for your intended use. All apartment and balcony areas are calculated as Gross Floor Area in accordance with the Method of Measurement for Residential Property as published by the Property Council of Australia. Subject to any terms implied by law which cannot be excluded, the developer accepts no responsibility for any loss, damage, cost or expense (wether direct or indirect) by you as a result of any error, omission or misrepresentation in information. All information is subject to change without notice.



# CENTREPIECE

Residences

APARTMENT

1.22

BEDROOM(S)

2

BATHROOM(S)

2

INTERNAL

65 m<sup>2</sup>

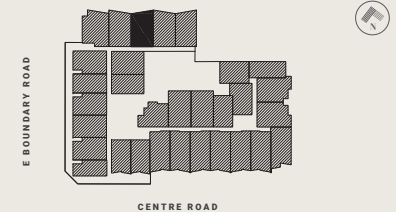
EXTERNAL

8 m<sup>2</sup>

TOTAL

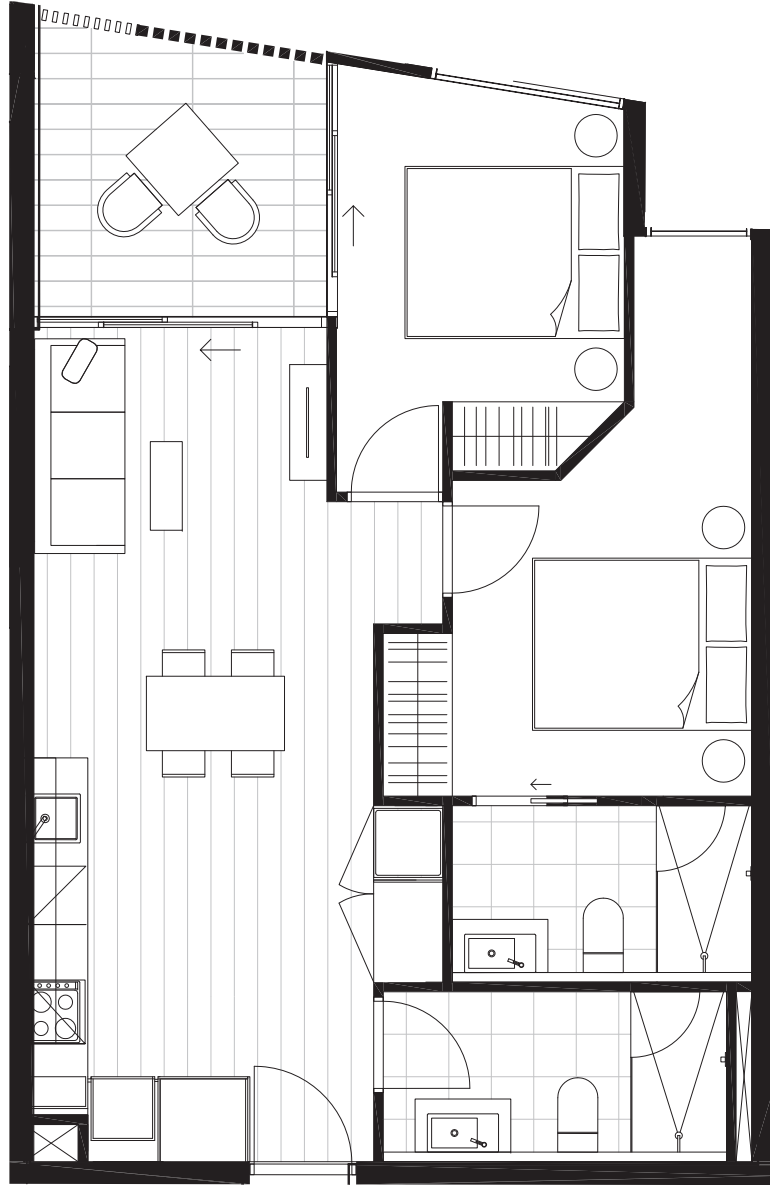
73.3 m<sup>2</sup>

LEVEL ONE KEY PLAN



DISCLAIMER

The information provided is illustrative only and may not be relied upon. In particular the final area dimensions of any residence sold will be determined by the contract of sale and may differ from the depicted. Whilst every effort is made to provide accurate and complete information, the developer does not warrant or represent that the information in this floor plan is free from errors or omissions or is suitable for your intended use. All apartment and balcony areas are calculated as Gross Floor Area in accordance with the Method of Measurement for Residential Property as published by the Property Council of Australia. Subject to any terms implied by law which cannot be excluded, the developer accepts no responsibility for any loss, damage, cost or expense (wether direct or indirect) by you as a result of any error, omission or misrepresentation in information. All information is subject to change without notice.



# CENTREPIECE

Residences

APARTMENT

1.23

BEDROOM(S)

2

BATHROOM(S)

2

INTERNAL

65 m<sup>2</sup>

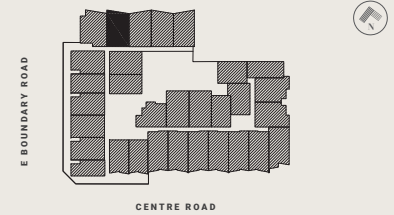
EXTERNAL

8 m<sup>2</sup>

TOTAL

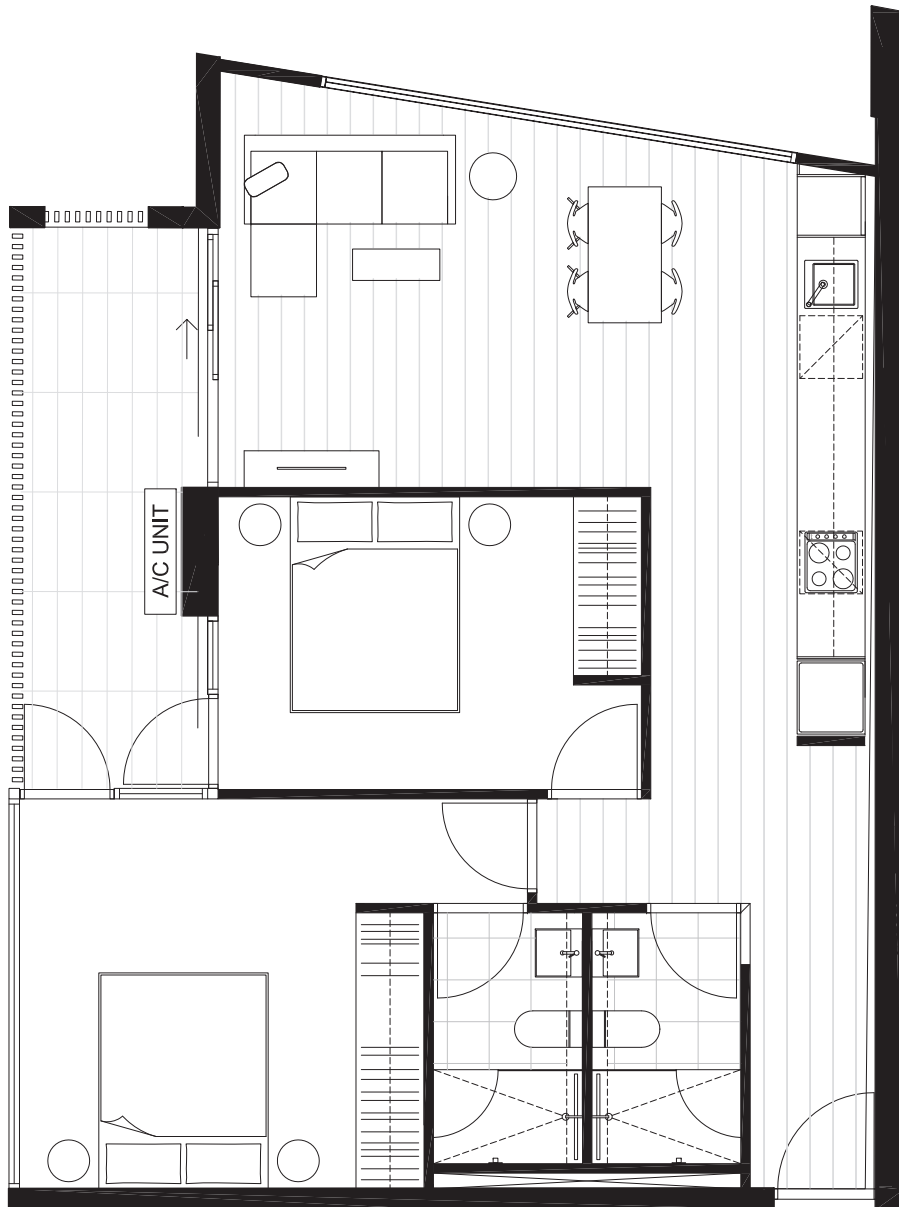
73.5 m<sup>2</sup>

LEVEL ONE KEY PLAN



DISCLAIMER

The information provided is illustrative only and may not be relied upon. In particular the final area dimensions of any residence sold will be determined by the contract of sale and may differ from the depicted. Whilst every effort is made to provide accurate and complete information, the developer does not warrant or represent that the information in this floor plan is free from errors or omissions or is suitable for your intended use. All apartment and balcony areas are calculated as Gross Floor Area in accordance with the Method of Measurement for Residential Property as published by the Property Council of Australia. Subject to any terms implied by law which cannot be excluded, the developer accepts no responsibility for any loss, damage, cost or expense (wether direct or indirect) by you as a result of any error, omission or misrepresentation in information. All information is subject to change without notice.



# CENTREPIECE

Residences

APARTMENT

1.24

BEDROOM(S)

2

BATHROOM(S)

2

INTERNAL

75 m<sup>2</sup>

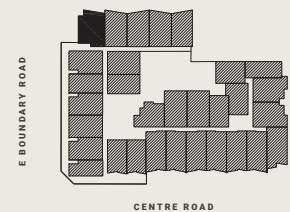
EXTERNAL

10 m<sup>2</sup>

TOTAL

85.7 m<sup>2</sup>

LEVEL ONE KEY PLAN



DISCLAIMER

The information provided is illustrative only and may not be relied upon. In particular the final area dimensions of any residence sold will be determined by the contract of sale and may differ from the depicted. Whilst every effort is made to provide accurate and complete information, the developer does not warrant or represent that the information in this floor plan is free from errors or omissions or is suitable for your intended use. All apartment and balcony areas are calculated as Gross Floor Area in accordance with the Method of Measurement for Residential Property as published by the Property Council of Australia. Subject to any terms implied by law which cannot be excluded, the developer accepts no responsibility for any loss, damage, cost or expense (wether direct or indirect) by you as a result of any error, omission or misrepresentation in information. All information is subject to change without notice.

# CENTREPIECE

Residences



APARTMENT

1.25

BEDROOM(S)

2

BATHROOM(S)

2

INTERNAL

63 m<sup>2</sup>

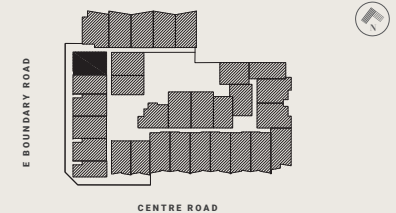
EXTERNAL

9 m<sup>2</sup>

TOTAL

71.1 m<sup>2</sup>

LEVEL ONE KEY PLAN



DISCLAIMER

The information provided is illustrative only and may not be relied upon. In particular the final area dimensions of any residence sold will be determined by the contract of sale and may differ from the depicted. Whilst every effort is made to provide accurate and complete information, the developer does not warrant or represent that the information in this floor plan is free from errors or omissions or is suitable for your intended use. All apartment and balcony areas are calculated as Gross Floor Area in accordance with the Method of Measurement for Residential Property as published by the Property Council of Australia. Subject to any terms implied by law which cannot be excluded, the developer accepts no responsibility for any loss, damage, cost or expense (wether direct or indirect) by you as a result of any error, omission or misrepresentation in information. All information is subject to change without notice.

# CENTREPIECE

*Residences*



APARTMENT

1.27

BEDROOM(S)

2

BATHROOM(S)

2

INTERNAL

62 m<sup>2</sup>

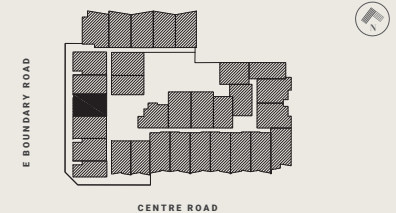
EXTERNAL

8 m<sup>2</sup>

TOTAL

70.1 m<sup>2</sup>

LEVEL ONE KEY PLAN



DISCLAIMER

The information provided is illustrative only and may not be relied upon. In particular the final area dimensions of any residence sold will be determined by the contract of sale and may differ from the depicted. Whilst every effort is made to provide accurate and complete information, the developer does not warrant or represent that the information in this floor plan is free from errors or omissions or is suitable for your intended use. All apartment and balcony areas are calculated as Gross Floor Area in accordance with the Method of Measurement for Residential Property as published by the Property Council of Australia. Subject to any terms implied by law which cannot be excluded, the developer accepts no responsibility for any loss, damage, cost or expense (wether direct or indirect) by you as a result of any error, omission or misrepresentation in information. All information is subject to change without notice.

# CENTREPIECE

Residences



APARTMENT

1.28

BEDROOM(S)

2

BATHROOM(S)

2

INTERNAL

62 m<sup>2</sup>

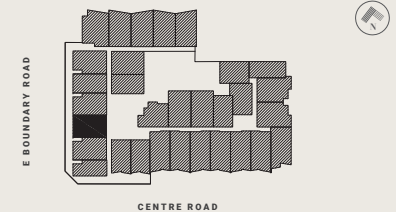
EXTERNAL

8 m<sup>2</sup>

TOTAL

70.1 m<sup>2</sup>

LEVEL ONE KEY PLAN



DISCLAIMER

The information provided is illustrative only and may not be relied upon. In particular the final area dimensions of any residence sold will be determined by the contract of sale and may differ from the depicted. Whilst every effort is made to provide accurate and complete information, the developer does not warrant or represent that the information in this floor plan is free from errors or omissions or is suitable for your intended use. All apartment and balcony areas are calculated as Gross Floor Area in accordance with the Method of Measurement for Residential Property as published by the Property Council of Australia. Subject to any terms implied by law which cannot be excluded, the developer accepts no responsibility for any loss, damage, cost or expense (wether direct or indirect) by you as a result of any error, omission or misrepresentation in information. All information is subject to change without notice.

# CENTREPIECE

Residences



APARTMENT

1.29

BEDROOM(S)

2

BATHROOM(S)

2

INTERNAL

60 m<sup>2</sup>

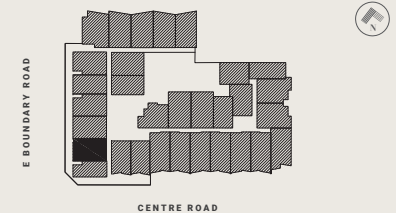
EXTERNAL

9 m<sup>2</sup>

TOTAL

69.1 m<sup>2</sup>

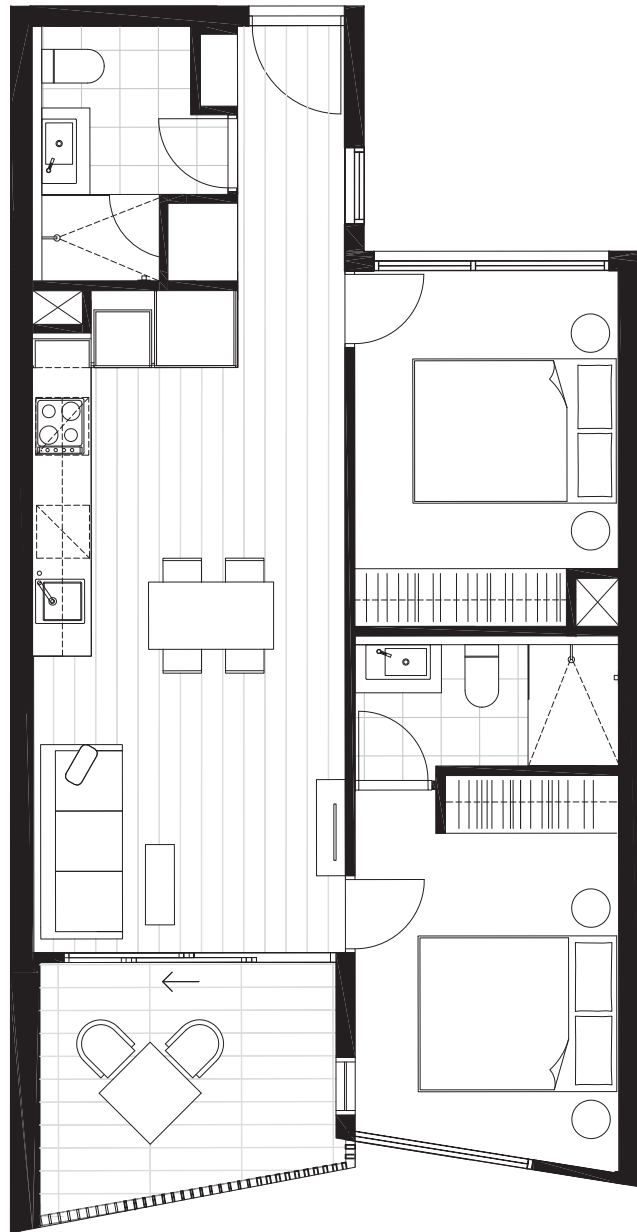
LEVEL ONE KEY PLAN



DISCLAIMER

The information provided is illustrative only and may not be relied upon. In particular the final area dimensions of any residence sold will be determined by the contract of sale and may differ from the depicted. Whilst every effort is made to provide accurate and complete information, the developer does not warrant or represent that the information in this floor plan is free from errors or omissions or is suitable for your intended use. All apartment and balcony areas are calculated as Gross Floor Area in accordance with the Method of Measurement for Residential Property as published by the Property Council of Australia. Subject to any terms implied by law which cannot be excluded, the developer accepts no responsibility for any loss, damage, cost or expense (wether direct or indirect) by you as a result of any error, omission or misrepresentation in information. All information is subject to change without notice.





# CENTREPIECE

*Residences*

APARTMENT

2.03

BEDROOM(S)      BATHROOM(S)

2

2

INTERNAL      EXTERNAL

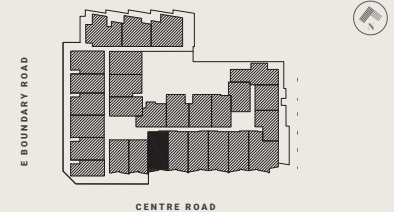
63 m<sup>2</sup>

8 m<sup>2</sup>

TOTAL

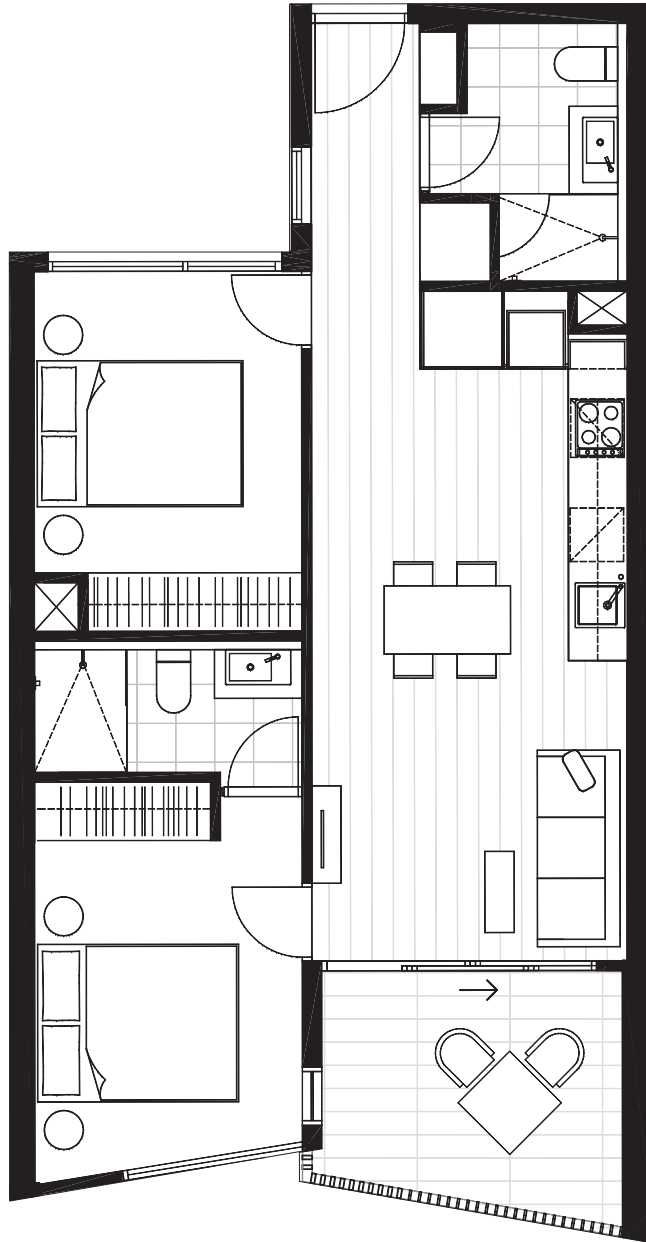
71.0 m<sup>2</sup>

LEVEL TWO KEY PLAN



DISCLAIMER

The information provided is illustrative only and may not be relied upon. In particular the final area dimensions of any residence sold will be determined by the contract of sale and may differ from the depicted. Whilst every effort is made to provide accurate and complete information, the developer does not warrant or represent that the information in this floor plan is free from errors or omissions or is suitable for your intended use. All apartment and balcony areas are calculated as Gross Floor Area in accordance with the Method of Measurement for Residential Property as published by the Property Council of Australia. Subject to any terms implied by law which cannot be excluded, the developer accepts no responsibility for any loss, damage, cost or expense (wether direct or indirect) by you as a result of any error, omission or misrepresentation in information. All information is subject to change without notice.



# CENTREPIECE

*Residences*

APARTMENT

2.04

BEDROOM(S)

2

BATHROOM(S)

2

INTERNAL

62 m<sup>2</sup>

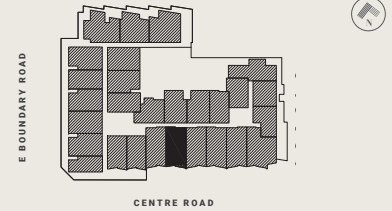
EXTERNAL

8 m<sup>2</sup>

TOTAL

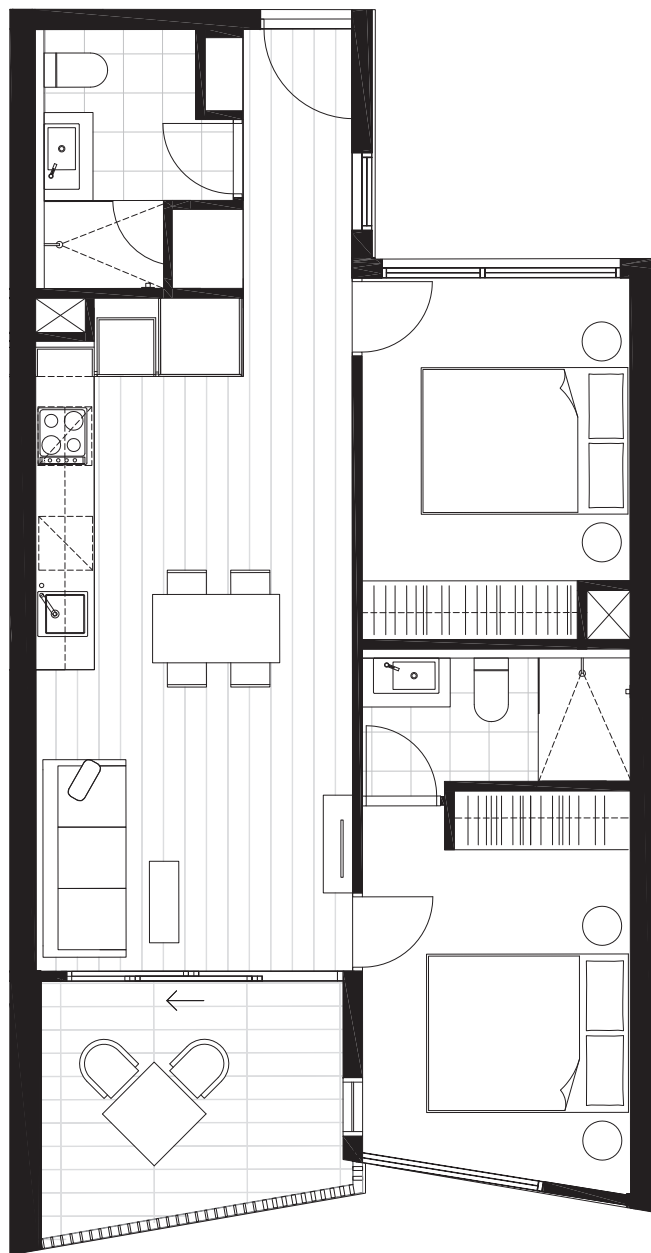
70.4 m<sup>2</sup>

LEVEL TWO KEY PLAN



DISCLAIMER

The information provided is illustrative only and may not be relied upon. In particular the final area dimensions of any residence sold will be determined by the contract of sale and may differ from the depicted. Whilst every effort is made to provide accurate and complete information, the developer does not warrant or represent that the information in this floor plan is free from errors or omissions or is suitable for your intended use. All apartment and balcony areas are calculated as Gross Floor Area in accordance with the Method of Measurement for Residential Property as published by the Property Council of Australia. Subject to any terms implied by law which cannot be excluded, the developer accepts no responsibility for any loss, damage, cost or expense (wether direct or indirect) by you as a result of any error, omission or misrepresentation in information. All information is subject to change without notice.



# CENTREPIECE

*Residences*

APARTMENT

2.05

BEDROOM(S)

2

BATHROOM(S)

2

INTERNAL

62 m<sup>2</sup>

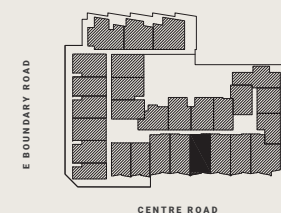
EXTERNAL

8 m<sup>2</sup>

TOTAL

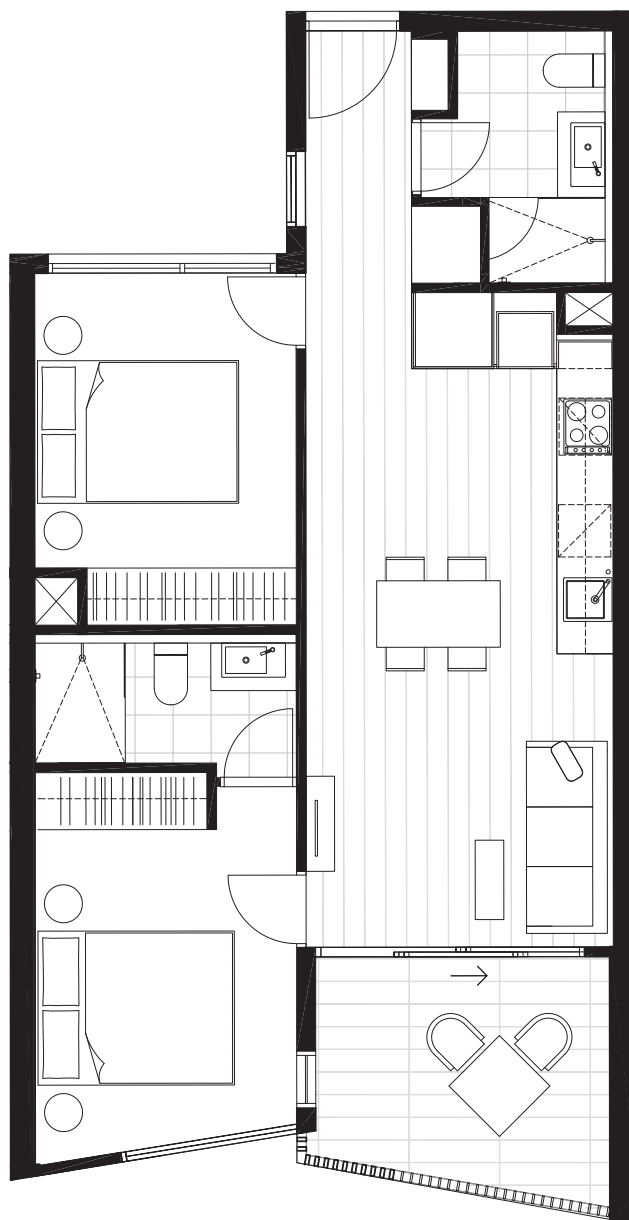
70.4 m<sup>2</sup>

LEVEL TWO KEY PLAN



DISCLAIMER

The information provided is illustrative only and may not be relied upon. In particular the final area dimensions of any residence sold will be determined by the contract of sale and may differ from the depicted. Whilst every effort is made to provide accurate and complete information, the developer does not warrant or represent that the information in this floor plan is free from errors or omissions or is suitable for your intended use. All apartment and balcony areas are calculated as Gross Floor Area in accordance with the Method of Measurement for Residential Property as published by the Property Council of Australia. Subject to any terms implied by law which cannot be excluded, the developer accepts no responsibility for any loss, damage, cost or expense (wether direct or indirect) by you as a result of any error, omission or misrepresentation in information. All information is subject to change without notice.



# CENTREPIECE

*Residences*

APARTMENT

2.06

BEDROOM(S)

2

BATHROOM(S)

2

INTERNAL

62 m<sup>2</sup>

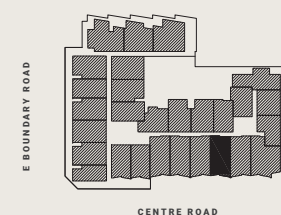
EXTERNAL

8 m<sup>2</sup>

TOTAL

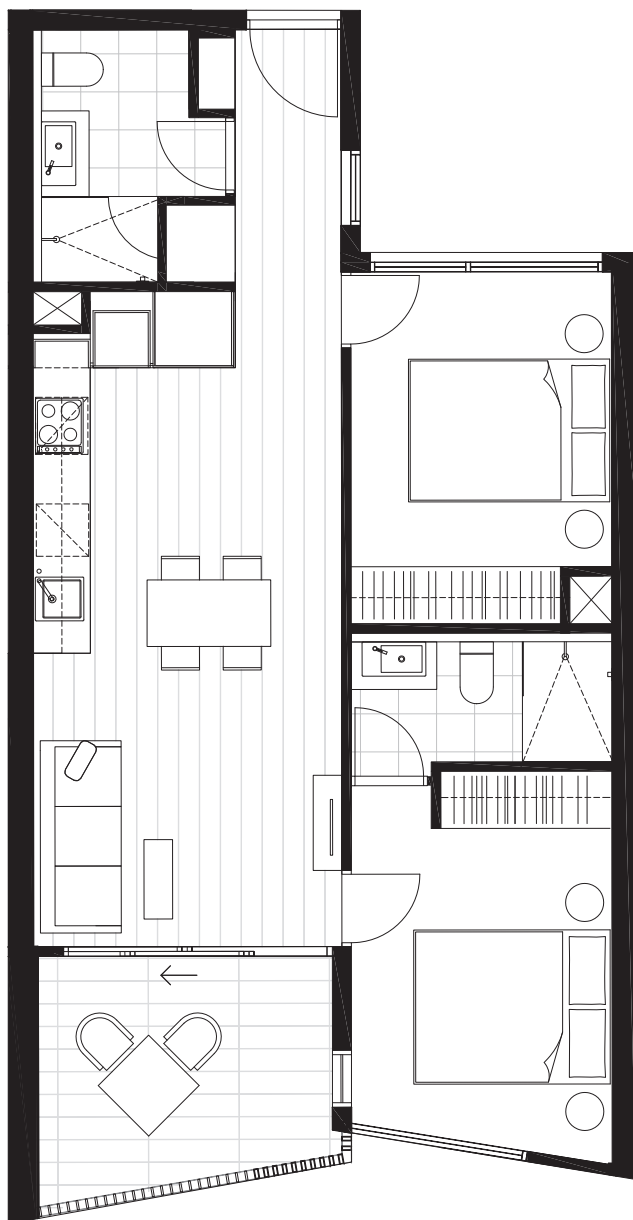
70.4 m<sup>2</sup>

LEVEL TWO KEY PLAN



DISCLAIMER

The information provided is illustrative only and may not be relied upon. In particular the final area dimensions of any residence sold will be determined by the contract of sale and may differ from the depicted. Whilst every effort is made to provide accurate and complete information, the developer does not warrant or represent that the information in this floor plan is free from errors or omissions or is suitable for your intended use. All apartment and balcony areas are calculated as Gross Floor Area in accordance with the Method of Measurement for Residential Property as published by the Property Council of Australia. Subject to any terms implied by law which cannot be excluded, the developer accepts no responsibility for any loss, damage, cost or expense (wether direct or indirect) by you as a result of any error, omission or misrepresentation in information. All information is subject to change without notice.



# CENTREPIECE

## Residences

APARTMENT

2.07

BEDROOM(S)

2

BATHROOM(S)

2

INTERNAL

62 m<sup>2</sup>

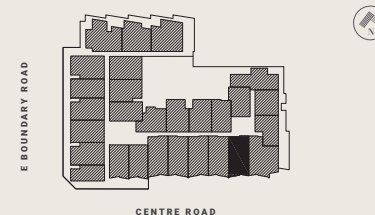
EXTERNAL

8 m<sup>2</sup>

TOTAL

70.4 m<sup>2</sup>

LEVEL TWO KEY PLAN



DISCLAIMER

The information provided is illustrative only and may not be relied upon. In particular the final area dimensions of any residence sold will be determined by the contract of sale and may differ from the depicted. Whilst every effort is made to provide accurate and complete information, the developer does not warrant or represent that the information in this floor plan is free from errors or omissions or is suitable for your intended use. All apartment and balcony areas are calculated as Gross Floor Area in accordance with the Method of Measurement for Residential Property as published by the Property Council of Australia. Subject to any terms implied by law which cannot be excluded, the developer accepts no responsibility for any loss, damage, cost or expense (wether direct or indirect) by you as a result of any error, omission or misrepresentation in information. All information is subject to change without notice.



# CENTREPIECE

Residences

APARTMENT

2.08

BEDROOM(S)

2

BATHROOM(S)

2

INTERNAL

74 m<sup>2</sup>

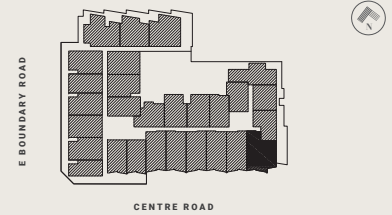
EXTERNAL

17 m<sup>2</sup>

TOTAL

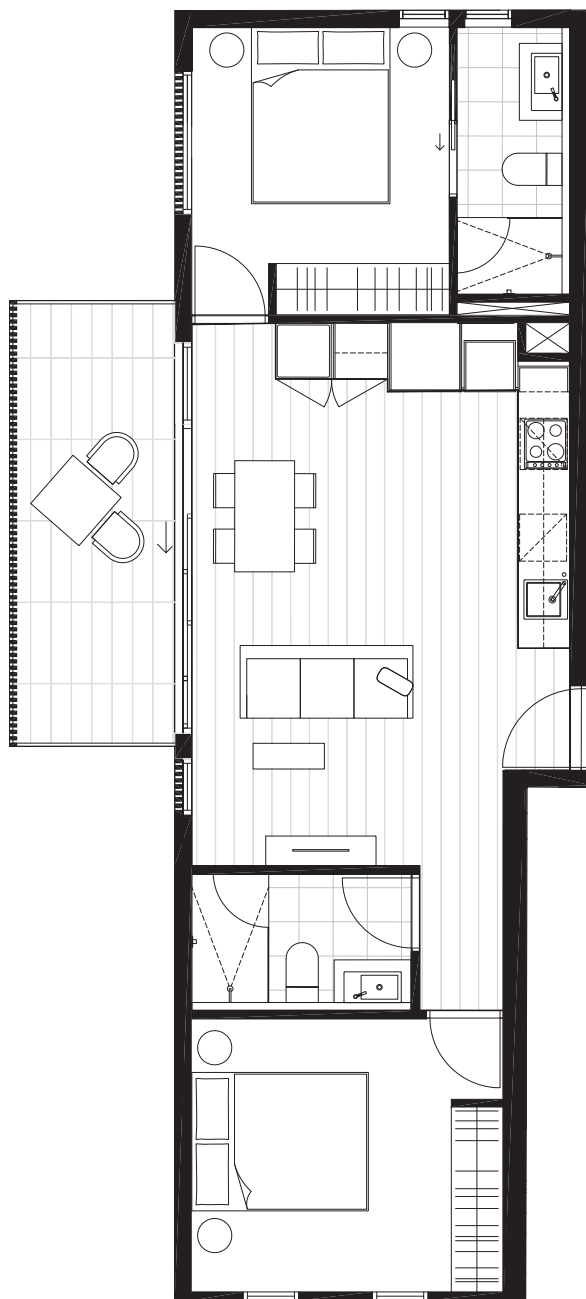
90.7 m<sup>2</sup>

LEVEL TWO KEY PLAN



DISCLAIMER

The information provided is illustrative only and may not be relied upon. In particular the final area dimensions of any residence sold will be determined by the contract of sale and may differ from the depicted. Whilst every effort is made to provide accurate and complete information, the developer does not warrant or represent that the information in this floor plan is free from errors or omissions or is suitable for your intended use. All apartment and balcony areas are calculated as Gross Floor Area in accordance with the Method of Measurement for Residential Property as published by the Property Council of Australia. Subject to any terms implied by law which cannot be excluded, the developer accepts no responsibility for any loss, damage, cost or expense (wether direct or indirect) by you as a result of any error, omission or misrepresentation in information. All information is subject to change without notice.



# CENTREPIECE

*Residences*

APARTMENT

2.11

BEDROOM(S)

2

BATHROOM(S)

2

INTERNAL

67 m<sup>2</sup>

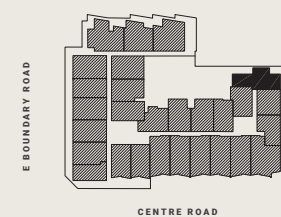
EXTERNAL

10 m<sup>2</sup>

TOTAL

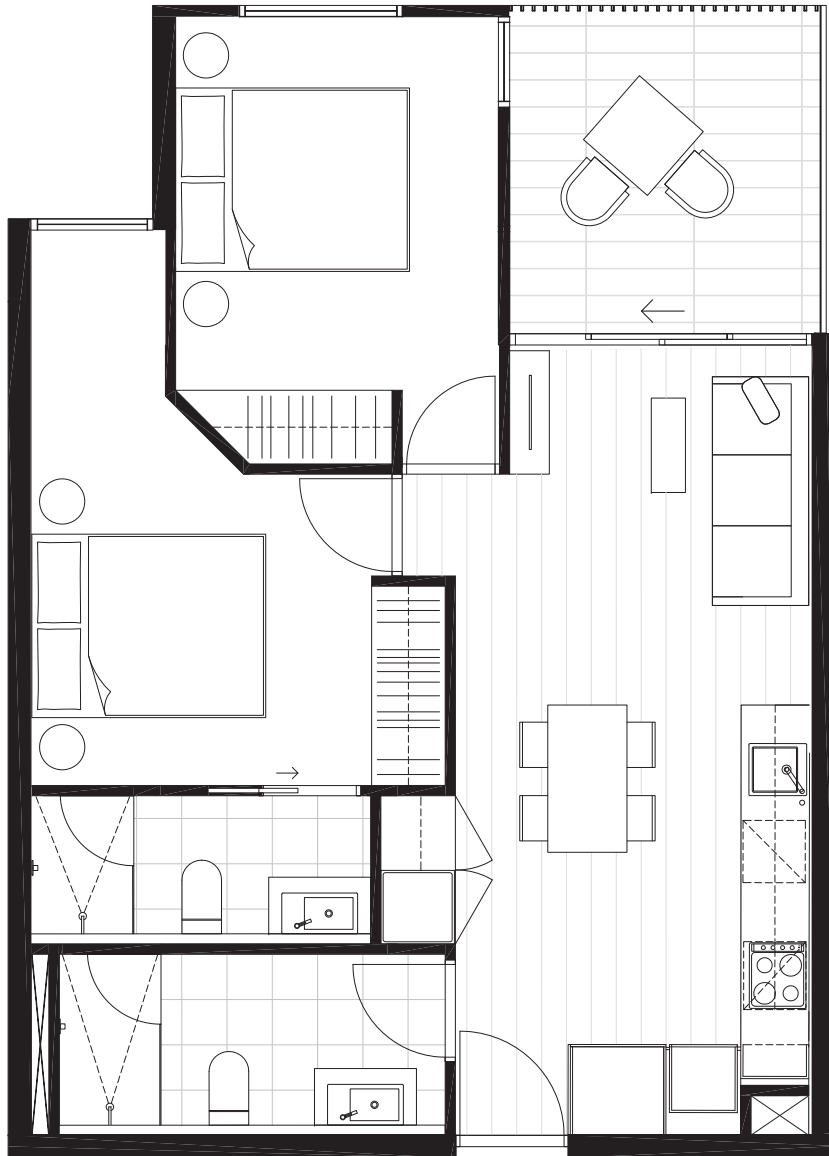
77.3 m<sup>2</sup>

LEVEL TWO KEY PLAN



DISCLAIMER

The information provided is illustrative only and may not be relied upon. In particular the final area dimensions of any residence sold will be determined by the contract of sale and may differ from the depicted. Whilst every effort is made to provide accurate and complete information, the developer does not warrant or represent that the information in this floor plan is free from errors or omissions or is suitable for your intended use. All apartment and balcony areas are calculated as Gross Floor Area in accordance with the Method of Measurement for Residential Property as published by the Property Council of Australia. Subject to any terms implied by law which cannot be excluded, the developer accepts no responsibility for any loss, damage, cost or expense (wether direct or indirect) by you as a result of any error, omission or misrepresentation in information. All information is subject to change without notice.



# CENTREPIECE

Residences

APARTMENT

2.14

BEDROOM(S)

2

BATHROOM(S)

2

INTERNAL

62 m<sup>2</sup>

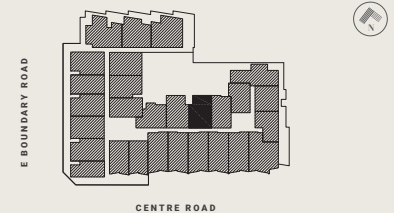
EXTERNAL

8 m<sup>2</sup>

TOTAL

70.4 m<sup>2</sup>

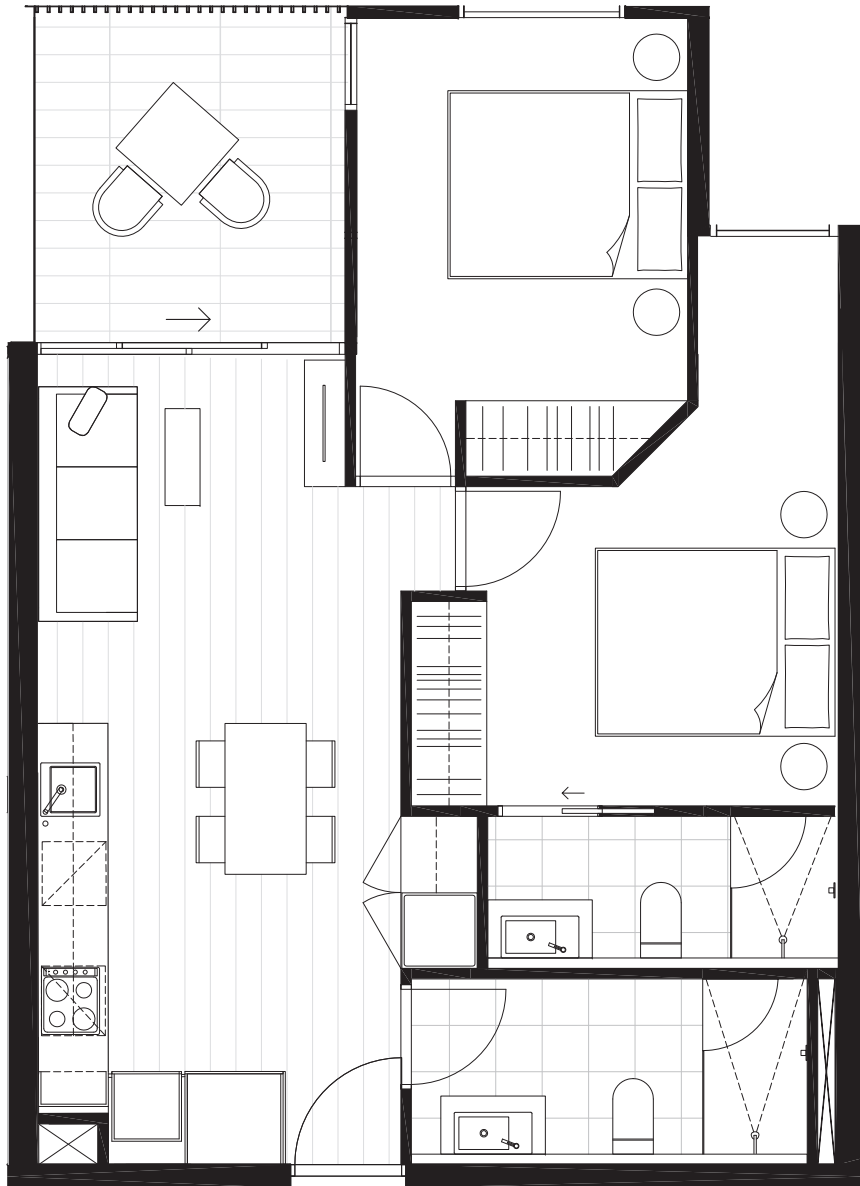
LEVEL TWO KEY PLAN



DISCLAIMER

The information provided is illustrative only and may not be relied upon. In particular the final area dimensions of any residence sold will be determined by the contract of sale and may differ from the depicted. Whilst every effort is made to provide accurate and complete information, the developer does not warrant or represent that the information in this floor plan is free from errors or omissions or is suitable for your intended use. All apartment and balcony areas are calculated as Gross Floor Area in accordance with the Method of Measurement for Residential Property as published by the Property Council of Australia. Subject to any terms implied by law which cannot be excluded, the developer accepts no responsibility for any loss, damage, cost or expense (wether direct or indirect) by you as a result of any error, omission or misrepresentation in information. All information is subject to change without notice.





# CENTREPIECE

Residences

APARTMENT

2.15

BEDROOM(S)

2

BATHROOM(S)

2

INTERNAL

62 m<sup>2</sup>

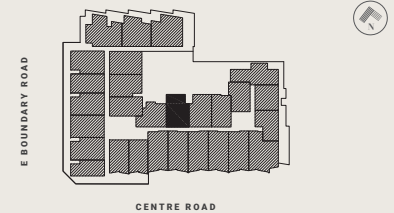
EXTERNAL

8 m<sup>2</sup>

TOTAL

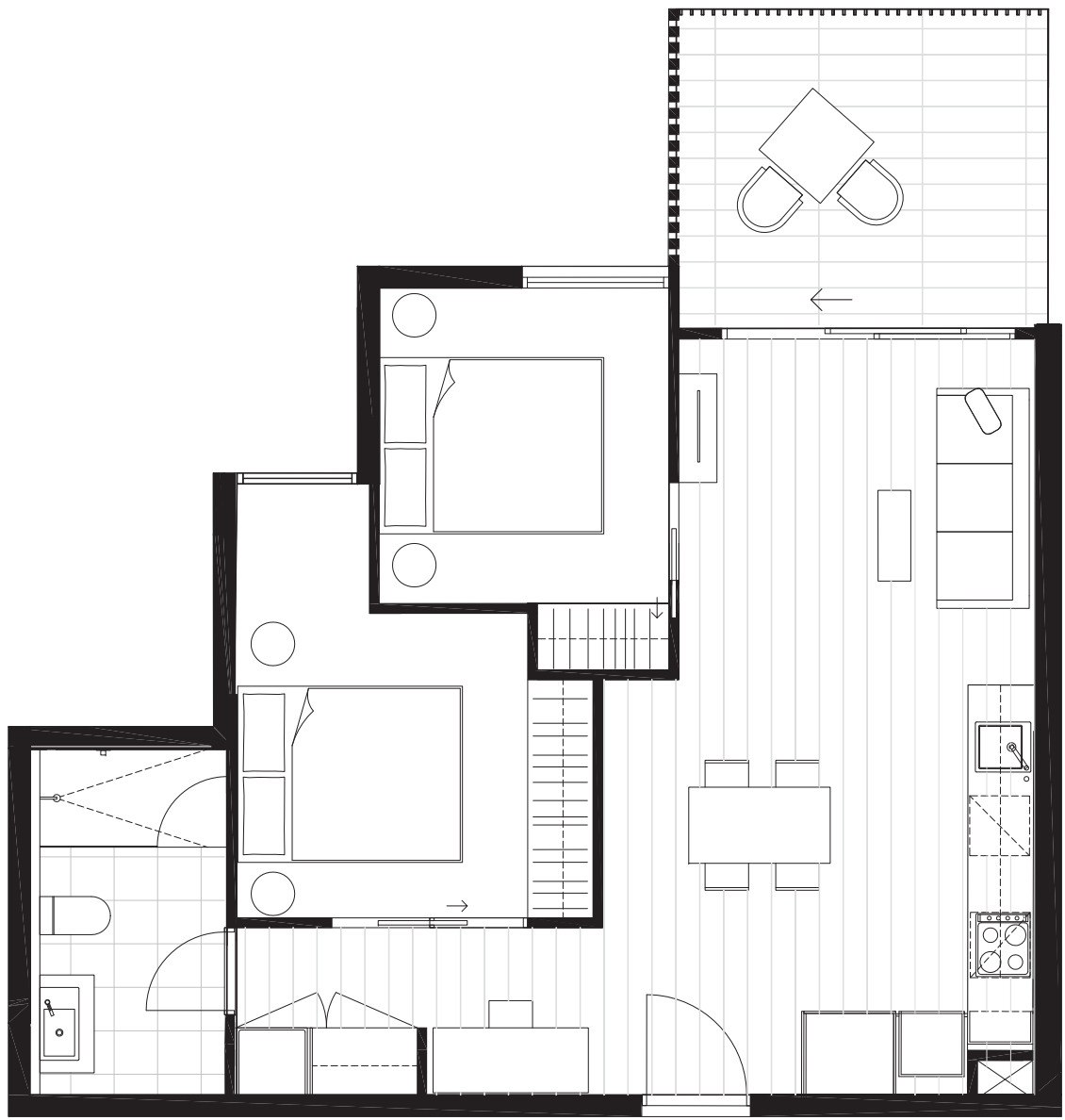
70.4 m<sup>2</sup>

LEVEL TWO KEY PLAN



DISCLAIMER

The information provided is illustrative only and may not be relied upon. In particular the final area dimensions of any residence sold will be determined by the contract of sale and may differ from the depicted. Whilst every effort is made to provide accurate and complete information, the developer does not warrant or represent that the information in this floor plan is free from errors or omissions or is suitable for your intended use. All apartment and balcony areas are calculated as Gross Floor Area in accordance with the Method of Measurement for Residential Property as published by the Property Council of Australia. Subject to any terms implied by law which cannot be excluded, the developer accepts no responsibility for any loss, damage, cost or expense (wether direct or indirect) by you as a result of any error, omission or misrepresentation in information. All information is subject to change without notice.

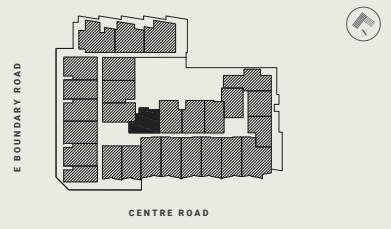


# CENTREPIECE

*Residences*

APARTMENT	
2.16	
BEDROOM(S)	BATHROOM(S)
2	1
INTERNAL	EXTERNAL
62 m <sup>2</sup>	10 m <sup>2</sup>
TOTAL	
71.8 m <sup>2</sup>	

LEVEL TWO KEY PLAN



DISCLAIMER

The information provided is illustrative only and may not be relied upon. In particular the final area dimensions of any residence sold will be determined by the contract of sale and may differ from the depicted. Whilst every effort is made to provide accurate and complete information, the developer does not warrant or represent that the information in this floor plan is free from errors or omissions or is suitable for your intended use. All apartment and balcony areas are calculated as Gross Floor Area in accordance with the Method of Measurement for Residential Property as published by the Property Council of Australia. Subject to any terms implied by law which cannot be excluded, the developer accepts no responsibility for any loss, damage, cost or expense (wether direct or indirect) by you as a result of any error, omission or misrepresentation in information. All information is subject to change without notice.



# CENTREPIECE

Residences



APARTMENT

2.18

BEDROOM(S) BATHROOM(S)

2 2

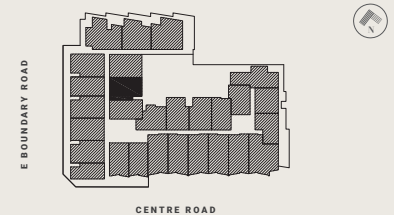
INTERNAL EXTERNAL

62 m<sup>2</sup> 8 m<sup>2</sup>

TOTAL

70.4 m<sup>2</sup>

LEVEL TWO KEY PLAN



DISCLAIMER

The information provided is illustrative only and may not be relied upon. In particular the final area dimensions of any residence sold will be determined by the contract of sale and may differ from the depicted. Whilst every effort is made to provide accurate and complete information, the developer does not warrant or represent that the information in this floor plan is free from errors or omissions or is suitable for your intended use. All apartment and balcony areas are calculated as Gross Floor Area in accordance with the Method of Measurement for Residential Property as published by the Property Council of Australia. Subject to any terms implied by law which cannot be excluded, the developer accepts no responsibility for any loss, damage, cost or expense (wether direct or indirect) by you as a result of any error, omission or misrepresentation in information. All information is subject to change without notice.

# CENTREPIECE

Residences



APARTMENT

2.19

BEDROOM(S)

2

BATHROOM(S)

2

INTERNAL

64 m<sup>2</sup>

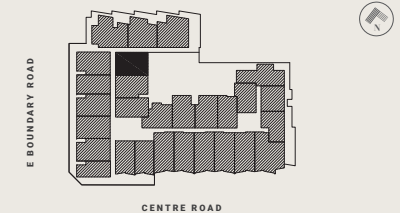
EXTERNAL

8 m<sup>2</sup>

TOTAL

71.7 m<sup>2</sup>

LEVEL TWO KEY PLAN



DISCLAIMER

The information provided is illustrative only and may not be relied upon. In particular the final area dimensions of any residence sold will be determined by the contract of sale and may differ from the depicted. Whilst every effort is made to provide accurate and complete information, the developer does not warrant or represent that the information in this floor plan is free from errors or omissions or is suitable for your intended use. All apartment and balcony areas are calculated as Gross Floor Area in accordance with the Method of Measurement for Residential Property as published by the Property Council of Australia. Subject to any terms implied by law which cannot be excluded, the developer accepts no responsibility for any loss, damage, cost or expense (wether direct or indirect) by you as a result of any error, omission or misrepresentation in information. All information is subject to change without notice.

# CENTREPIECE

Residences



APARTMENT

2.20

BEDROOM(S)

2

BATHROOM(S)

2

INTERNAL

68 m<sup>2</sup>

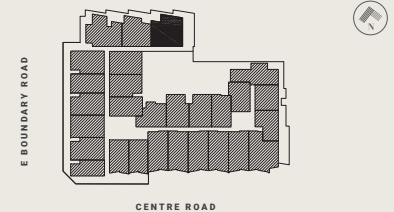
EXTERNAL

20 m<sup>2</sup>

TOTAL

87.8 m<sup>2</sup>

LEVEL TWO KEY PLAN



DISCLAIMER

The information provided is illustrative only and may not be relied upon. In particular the final area dimensions of any residence sold will be determined by the contract of sale and may differ from the depicted. Whilst every effort is made to provide accurate and complete information, the developer does not warrant or represent that the information in this floor plan is free from errors or omissions or is suitable for your intended use. All apartment and balcony areas are calculated as Gross Floor Area in accordance with the Method of Measurement for Residential Property as published by the Property Council of Australia. Subject to any terms implied by law which cannot be excluded, the developer accepts no responsibility for any loss, damage, cost or expense (wether direct or indirect) by you as a result of any error, omission or misrepresentation in information. All information is subject to change without notice.

# CENTREPIECE

Residences



APARTMENT

2.21

BEDROOM(S)

2

BATHROOM(S)

1

INTERNAL

64 m<sup>2</sup>

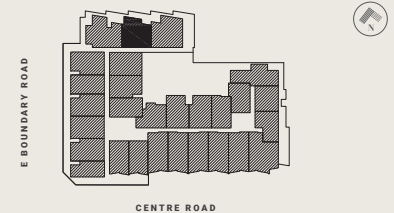
EXTERNAL

15 m<sup>2</sup>

TOTAL

78.2 m<sup>2</sup>

LEVEL TWO KEY PLAN



DISCLAIMER

The information provided is illustrative only and may not be relied upon. In particular the final area dimensions of any residence sold will be determined by the contract of sale and may differ from the depicted. Whilst every effort is made to provide accurate and complete information, the developer does not warrant or represent that the information in this floor plan is free from errors or omissions or is suitable for your intended use. All apartment and balcony areas are calculated as Gross Floor Area in accordance with the Method of Measurement for Residential Property as published by the Property Council of Australia. Subject to any terms implied by law which cannot be excluded, the developer accepts no responsibility for any loss, damage, cost or expense (wether direct or indirect) by you as a result of any error, omission or misrepresentation in information. All information is subject to change without notice.

# CENTREPIECE

Residences



APARTMENT

2.22

BEDROOM(S)

2

BATHROOM(S)

2

INTERNAL

81 m<sup>2</sup>

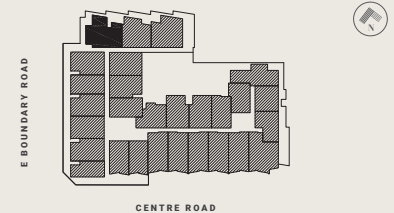
EXTERNAL

19 m<sup>2</sup>

TOTAL

100.3 m<sup>2</sup>

LEVEL TWO KEY PLAN



DISCLAIMER

The information provided is illustrative only and may not be relied upon. In particular the final area dimensions of any residence sold will be determined by the contract of sale and may differ from the depicted. Whilst every effort is made to provide accurate and complete information, the developer does not warrant or represent that the information in this floor plan is free from errors or omissions or is suitable for your intended use. All apartment and balcony areas are calculated as Gross Floor Area in accordance with the Method of Measurement for Residential Property as published by the Property Council of Australia. Subject to any terms implied by law which cannot be excluded, the developer accepts no responsibility for any loss, damage, cost or expense (wether direct or indirect) by you as a result of any error, omission or misrepresentation in information. All information is subject to change without notice.

# CENTREPIECE

Residences



APARTMENT

2.23

BEDROOM(S)

2

BATHROOM(S)

2

INTERNAL

63 m<sup>2</sup>

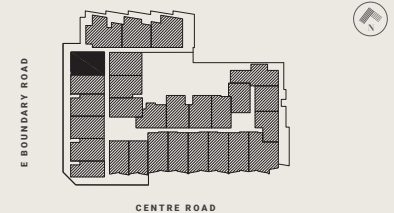
EXTERNAL

9 m<sup>2</sup>

TOTAL

71.1 m<sup>2</sup>

LEVEL TWO KEY PLAN



DISCLAIMER

The information provided is illustrative only and may not be relied upon. In particular the final area dimensions of any residence sold will be determined by the contract of sale and may differ from the depicted. Whilst every effort is made to provide accurate and complete information, the developer does not warrant or represent that the information in this floor plan is free from errors or omissions or is suitable for your intended use. All apartment and balcony areas are calculated as Gross Floor Area in accordance with the Method of Measurement for Residential Property as published by the Property Council of Australia. Subject to any terms implied by law which cannot be excluded, the developer accepts no responsibility for any loss, damage, cost or expense (wether direct or indirect) by you as a result of any error, omission or misrepresentation in information. All information is subject to change without notice.



# CENTREPIECE

Residences

APARTMENT

2.25

BEDROOM(S)      BATHROOM(S)

2                      2

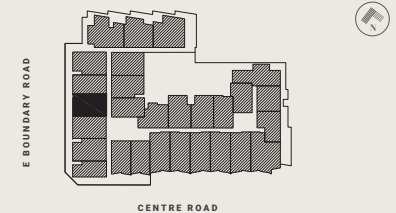
INTERNAL              EXTERNAL

62 m<sup>2</sup>                      8 m<sup>2</sup>

TOTAL

70.1 m<sup>2</sup>

LEVEL TWO KEY PLAN



DISCLAIMER

The information provided is illustrative only and may not be relied upon. In particular the final area dimensions of any residence sold will be determined by the contract of sale and may differ from the depicted. Whilst every effort is made to provide accurate and complete information, the developer does not warrant or represent that the information in this floor plan is free from errors or omissions or is suitable for your intended use. All apartment and balcony areas are calculated as Gross Floor Area in accordance with the Method of Measurement for Residential Property as published by the Property Council of Australia. Subject to any terms implied by law which cannot be excluded, the developer accepts no responsibility for any loss, damage, cost or expense (wether direct or indirect) by you as a result of any error, omission or misrepresentation in information. All information is subject to change without notice.



# CENTREPIECE

Residences



APARTMENT

2.26

BEDROOM(S)

2

BATHROOM(S)

2

INTERNAL

62 m<sup>2</sup>

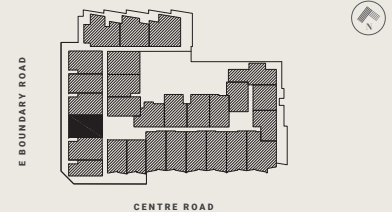
EXTERNAL

8 m<sup>2</sup>

TOTAL

70.1 m<sup>2</sup>

LEVEL TWO KEY PLAN



DISCLAIMER

The information provided is illustrative only and may not be relied upon. In particular the final area dimensions of any residence sold will be determined by the contract of sale and may differ from the depicted. Whilst every effort is made to provide accurate and complete information, the developer does not warrant or represent that the information in this floor plan is free from errors or omissions or is suitable for your intended use. All apartment and balcony areas are calculated as Gross Floor Area in accordance with the Method of Measurement for Residential Property as published by the Property Council of Australia. Subject to any terms implied by law which cannot be excluded, the developer accepts no responsibility for any loss, damage, cost or expense (wether direct or indirect) by you as a result of any error, omission or misrepresentation in information. All information is subject to change without notice.

# CENTREPIECE

Residences

APARTMENT

2.27

BEDROOM(S) BATHROOM(S)

2 2

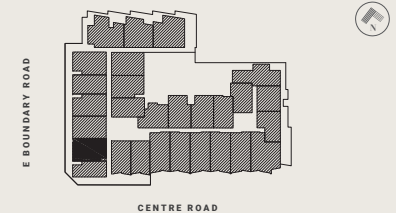
INTERNAL EXTERNAL

60 m<sup>2</sup> 9 m<sup>2</sup>

TOTAL

69.1 m<sup>2</sup>

LEVEL TWO KEY PLAN



DISCLAIMER

The information provided is illustrative only and may not be relied upon. In particular the final area dimensions of any residence sold will be determined by the contract of sale and may differ from the depicted. Whilst every effort is made to provide accurate and complete information, the developer does not warrant or represent that the information in this floor plan is free from errors or omissions or is suitable for your intended use. All apartment and balcony areas are calculated as Gross Floor Area in accordance with the Method of Measurement for Residential Property as published by the Property Council of Australia. Subject to any terms implied by law which cannot be excluded, the developer accepts no responsibility for any loss, damage, cost or expense (wether direct or indirect) by you as a result of any error, omission or misrepresentation in information. All information is subject to change without notice.



# CENTREPIECE

Residences



APARTMENT

3.03

BEDROOM(S)

2

BATHROOM(S)

2

INTERNAL

62 m<sup>2</sup>

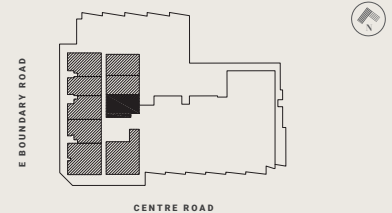
EXTERNAL

9 m<sup>2</sup>

TOTAL

70.5 m<sup>2</sup>

LEVEL THREE KEY PLAN



DISCLAIMER

The information provided is illustrative only and may not be relied upon. In particular the final area dimensions of any residence sold will be determined by the contract of sale and may differ from the depicted. Whilst every effort is made to provide accurate and complete information, the developer does not warrant or represent that the information in this floor plan is free from errors or omissions or is suitable for your intended use. All apartment and balcony areas are calculated as Gross Floor Area in accordance with the Method of Measurement for Residential Property as published by the Property Council of Australia. Subject to any terms implied by law which cannot be excluded, the developer accepts no responsibility for any loss, damage, cost or expense (wether direct or indirect) by you as a result of any error, omission or misrepresentation in information. All information is subject to change without notice.

# CENTREPIECE

*Residences*



APARTMENT

3.06

BEDROOM(S)

2

BATHROOM(S)

1

INTERNAL

61 m<sup>2</sup>

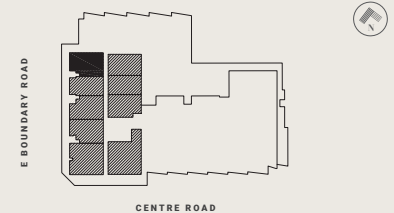
EXTERNAL

13 m<sup>2</sup>

TOTAL

73.8 m<sup>2</sup>

LEVEL THREE KEY PLAN



DISCLAIMER

The information provided is illustrative only and may not be relied upon. In particular the final area dimensions of any residence sold will be determined by the contract of sale and may differ from the depicted. Whilst every effort is made to provide accurate and complete information, the developer does not warrant or represent that the information in this floor plan is free from errors or omissions or is suitable for your intended use. All apartment and balcony areas are calculated as Gross Floor Area in accordance with the Method of Measurement for Residential Property as published by the Property Council of Australia. Subject to any terms implied by law which cannot be excluded, the developer accepts no responsibility for any loss, damage, cost or expense (wether direct or indirect) by you as a result of any error, omission or misrepresentation in information. All information is subject to change without notice.

# CENTREPIECE

Residences



APARTMENT

3.08

BEDROOM(S)

2

BATHROOM(S)

1

INTERNAL

61 m<sup>2</sup>

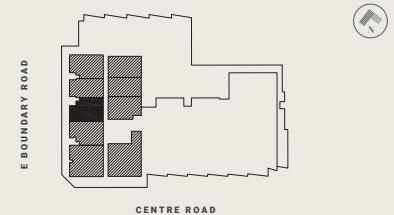
EXTERNAL

12 m<sup>2</sup>

TOTAL

72.9 m<sup>2</sup>

LEVEL THREE KEY PLAN



DISCLAIMER

The information provided is illustrative only and may not be relied upon. In particular the final area dimensions of any residence sold will be determined by the contract of sale and may differ from the depicted. Whilst every effort is made to provide accurate and complete information, the developer does not warrant or represent that the information in this floor plan is free from errors or omissions or is suitable for your intended use. All apartment and balcony areas are calculated as Gross Floor Area in accordance with the Method of Measurement for Residential Property as published by the Property Council of Australia. Subject to any terms implied by law which cannot be excluded, the developer accepts no responsibility for any loss, damage, cost or expense (wether direct or indirect) by you as a result of any error, omission or misrepresentation in information. All information is subject to change without notice.

# CENTREPIECE

Residences



APARTMENT

3.09

BEDROOM(S)

2

BATHROOM(S)

1

INTERNAL

61 m<sup>2</sup>

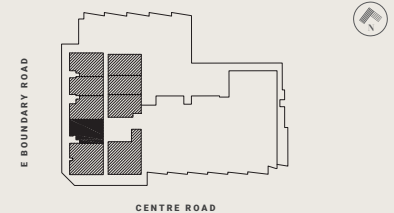
EXTERNAL

12 m<sup>2</sup>

TOTAL

73.0 m<sup>2</sup>

LEVEL THREE KEY PLAN



DISCLAIMER

The information provided is illustrative only and may not be relied upon. In particular the final area dimensions of any residence sold will be determined by the contract of sale and may differ from the depicted. Whilst every effort is made to provide accurate and complete information, the developer does not warrant or represent that the information in this floor plan is free from errors or omissions or is suitable for your intended use. All apartment and balcony areas are calculated as Gross Floor Area in accordance with the Method of Measurement for Residential Property as published by the Property Council of Australia. Subject to any terms implied by law which cannot be excluded, the developer accepts no responsibility for any loss, damage, cost or expense (wether direct or indirect) by you as a result of any error, omission or misrepresentation in information. All information is subject to change without notice.

# CENTREPIECE

Residences



APARTMENT

4.03

BEDROOM(S)

2

BATHROOM(S)

2

INTERNAL

62 m<sup>2</sup>

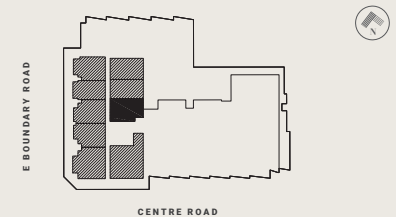
EXTERNAL

9 m<sup>2</sup>

TOTAL

70.5 m<sup>2</sup>

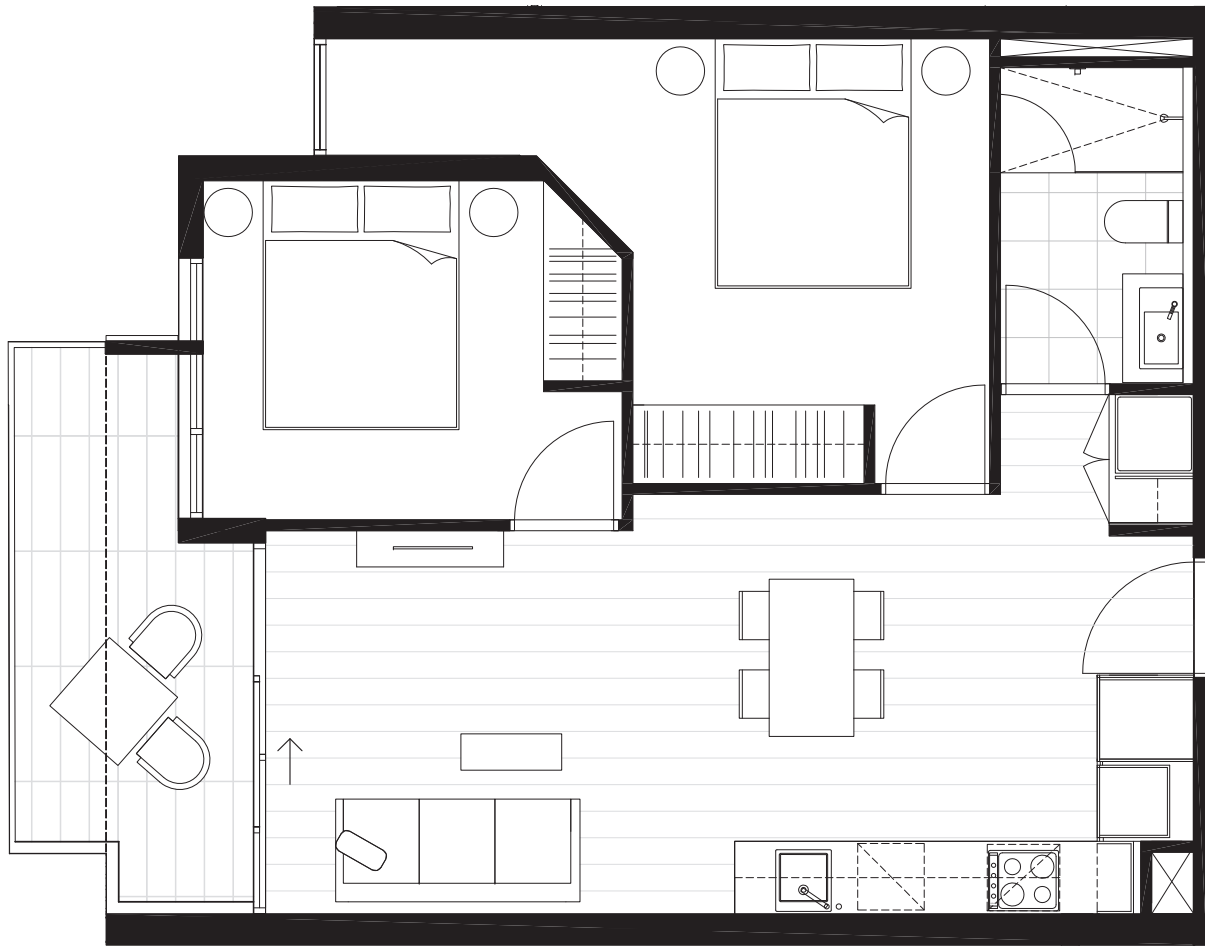
LEVEL FOUR KEY PLAN



DISCLAIMER

The information provided is illustrative only and may not be relied upon. In particular the final area dimensions of any residence sold will be determined by the contract of sale and may differ from the depicted. Whilst every effort is made to provide accurate and complete information, the developer does not warrant or represent that the information in this floor plan is free from errors or omissions or is suitable for your intended use. All apartment and balcony areas are calculated as Gross Floor Area in accordance with the Method of Measurement for Residential Property as published by the Property Council of Australia. Subject to any terms implied by law which cannot be excluded, the developer accepts no responsibility for any loss, damage, cost or expense (wether direct or indirect) by you as a result of any error, omission or misrepresentation in information. All information is subject to change without notice.





# CENTREPIECE

Residences

APARTMENT

4.08

BEDROOM(S)

2

BATHROOM(S)

1

INTERNAL

61 m<sup>2</sup>

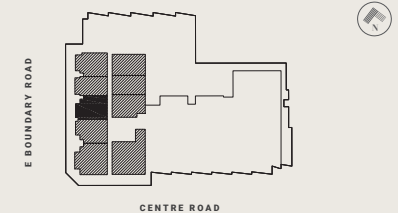
EXTERNAL

8 m<sup>2</sup>

TOTAL

69.6 m<sup>2</sup>

LEVEL FOUR KEY PLAN

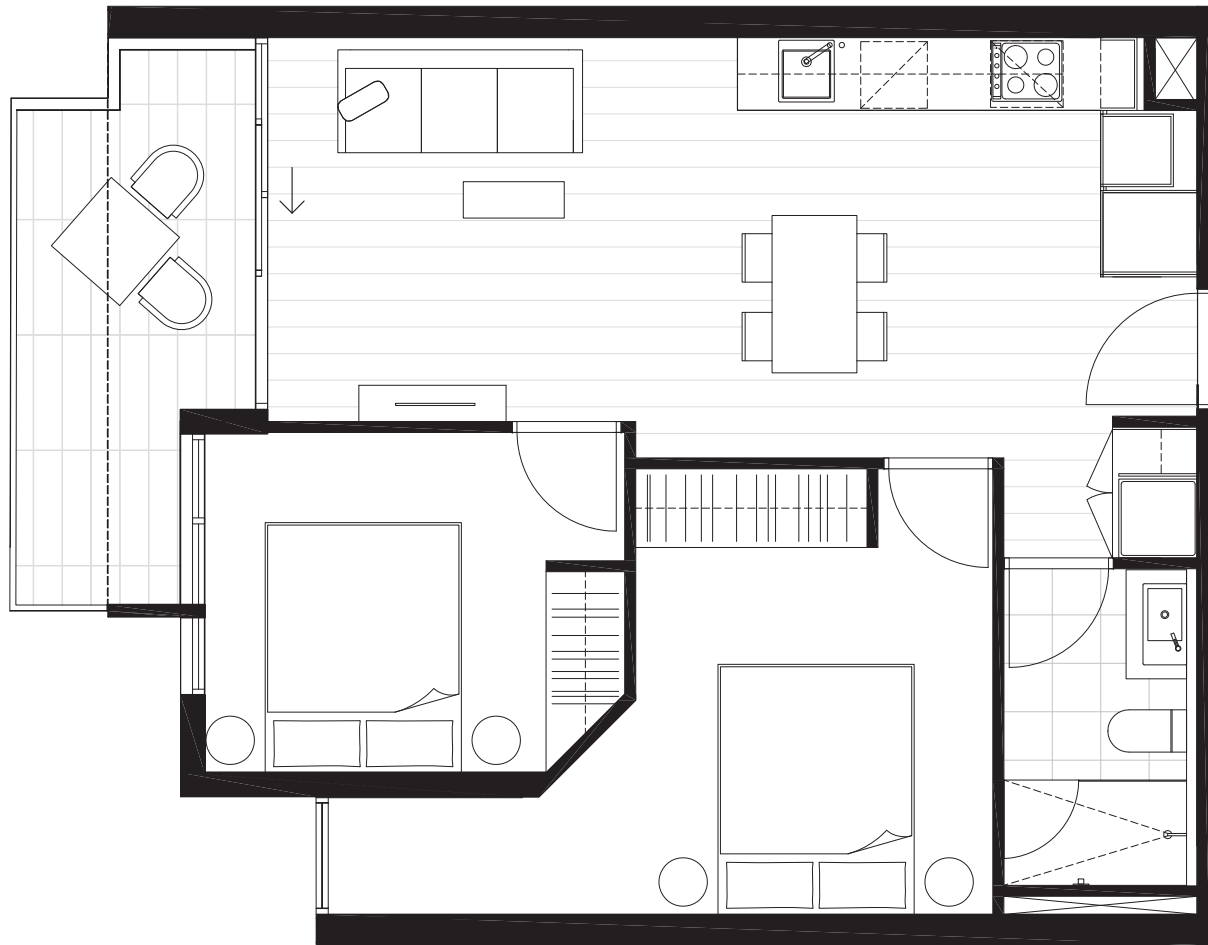


DISCLAIMER

The information provided is illustrative only and may not be relied upon. In particular the final area dimensions of any residence sold will be determined by the contract of sale and may differ from the depicted. Whilst every effort is made to provide accurate and complete information, the developer does not warrant or represent that the information in this floor plan is free from errors or omissions or is suitable for your intended use. All apartment and balcony areas are calculated as Gross Floor Area in accordance with the Method of Measurement for Residential Property as published by the Property Council of Australia. Subject to any terms implied by law which cannot be excluded, the developer accepts no responsibility for any loss, damage, cost or expense (wether direct or indirect) by you as a result of any error, omission or misrepresentation in information. All information is subject to change without notice.

# CENTREPIECE

Residences



APARTMENT

4.09

BEDROOM(S)

2

BATHROOM(S)

1

INTERNAL

61 m<sup>2</sup>

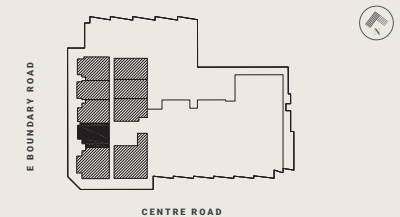
EXTERNAL

8 m<sup>2</sup>

TOTAL

69.6 m<sup>2</sup>

LEVEL FOUR KEY PLAN



DISCLAIMER

The information provided is illustrative only and may not be relied upon. In particular the final area dimensions of any residence sold will be determined by the contract of sale and may differ from the depicted. Whilst every effort is made to provide accurate and complete information, the developer does not warrant or represent that the information in this floor plan is free from errors or omissions or is suitable for your intended use. All apartment and balcony areas are calculated as Gross Floor Area in accordance with the Method of Measurement for Residential Property as published by the Property Council of Australia. Subject to any terms implied by law which cannot be excluded, the developer accepts no responsibility for any loss, damage, cost or expense (wether direct or indirect) by you as a result of any error, omission or misrepresentation in information. All information is subject to change without notice.

# CENTREPIECE

Residences



APARTMENT

5.01

BEDROOM(S)

2

BATHROOM(S)

2

INTERNAL

67 m<sup>2</sup>

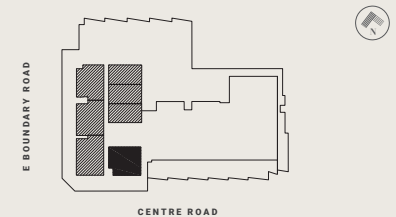
EXTERNAL

20 m<sup>2</sup>

TOTAL

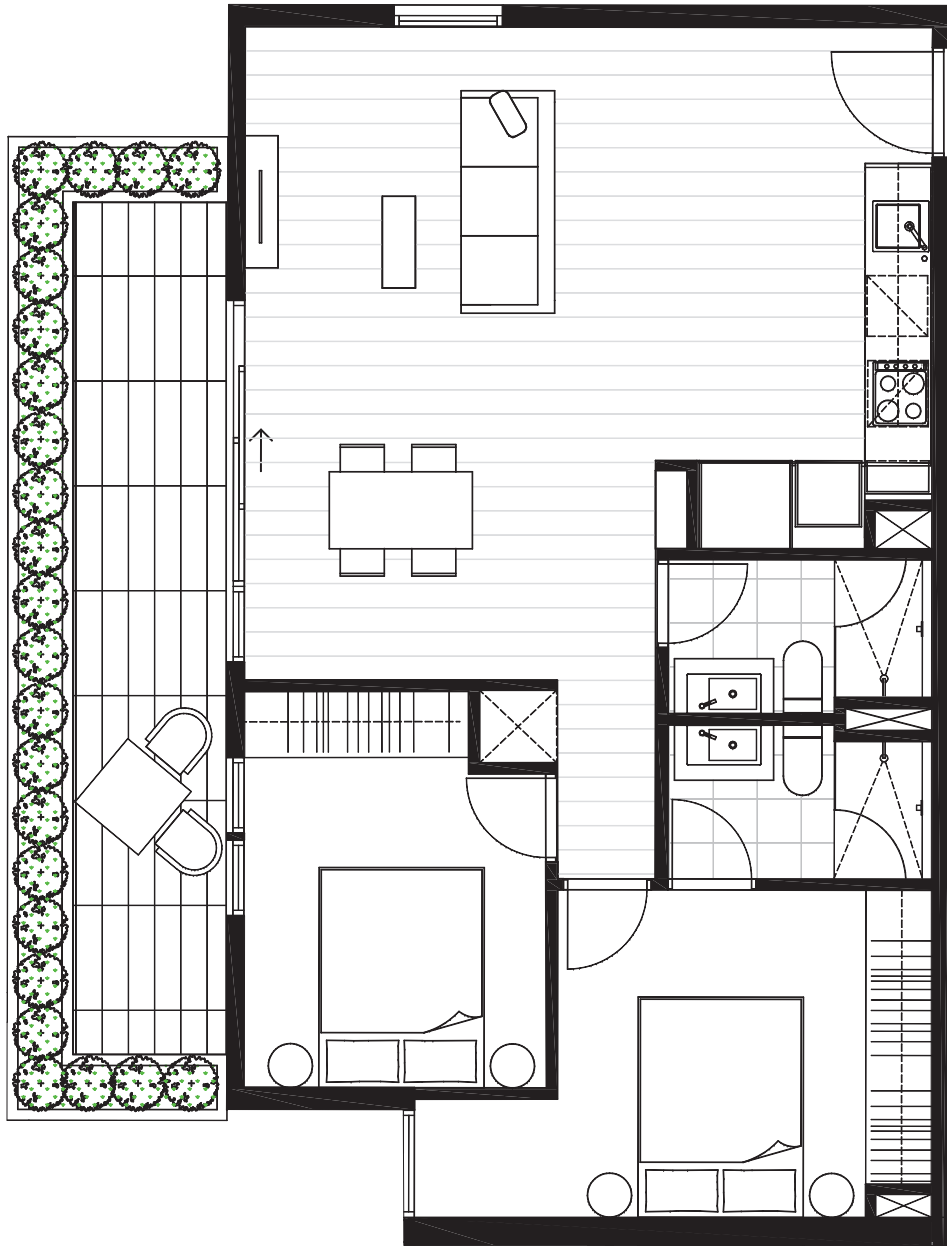
86.9 m<sup>2</sup>

LEVEL FIVE KEY PLAN



DISCLAIMER

The information provided is illustrative only and may not be relied upon. In particular the final area dimensions of any residence sold will be determined by the contract of sale and may differ from the depicted. Whilst every effort is made to provide accurate and complete information, the developer does not warrant or represent that the information in this floor plan is free from errors or omissions or is suitable for your intended use. All apartment and balcony areas are calculated as Gross Floor Area in accordance with the Method of Measurement for Residential Property as published by the Property Council of Australia. Subject to any terms implied by law which cannot be excluded, the developer accepts no responsibility for any loss, damage, cost or expense (wether direct or indirect) by you as a result of any error, omission or misrepresentation in information. All information is subject to change without notice.



# CENTREPIECE

Residences

APARTMENT

5.05

BEDROOM(S)

2

BATHROOM(S)

2

INTERNAL

71 m<sup>2</sup>

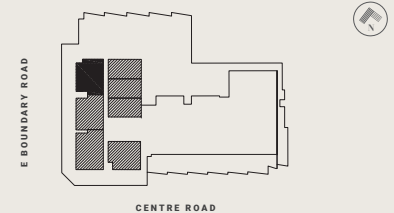
EXTERNAL

18 m<sup>2</sup>

TOTAL

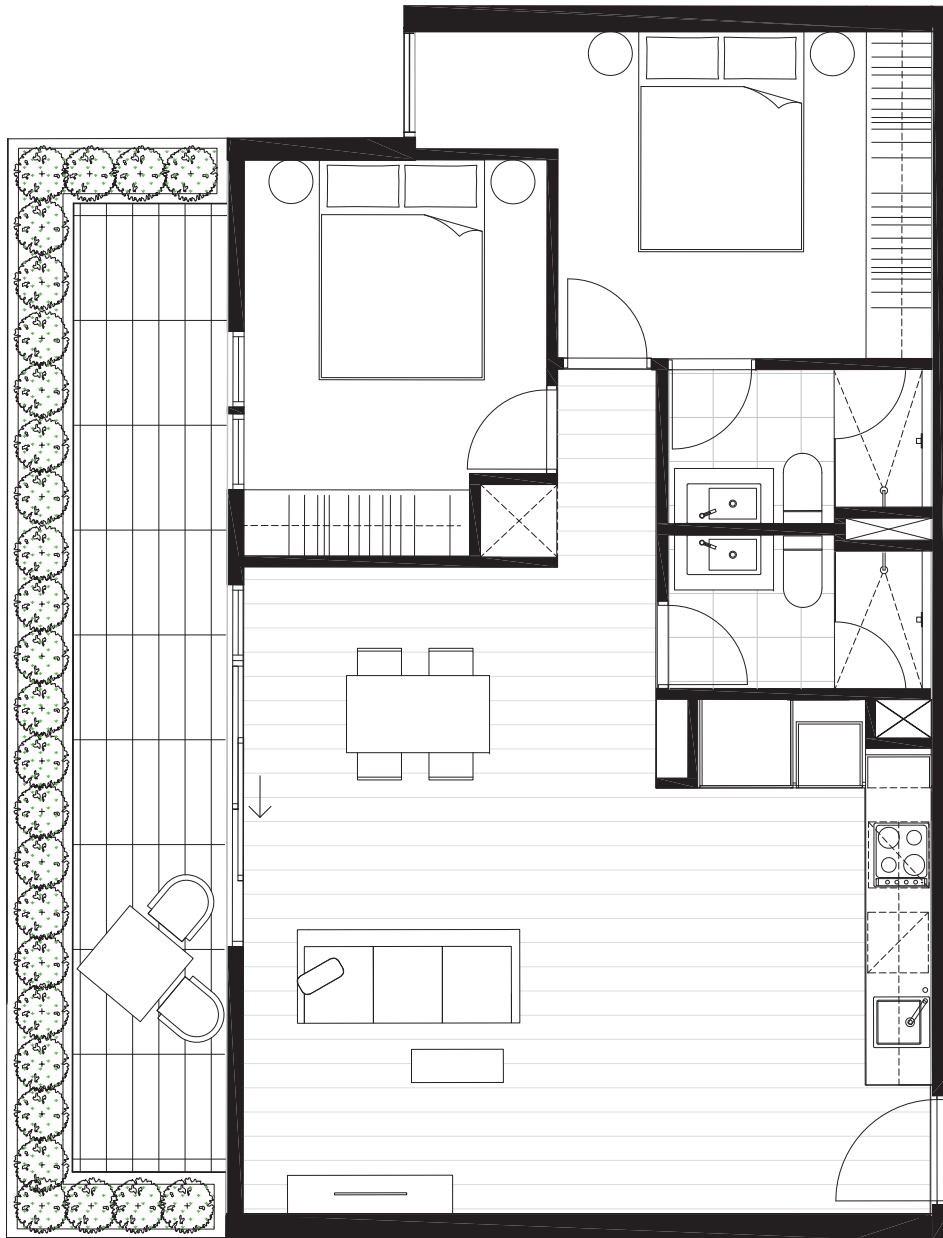
89.0 m<sup>2</sup>

LEVEL FIVE KEY PLAN



DISCLAIMER

The information provided is illustrative only and may not be relied upon. In particular the final area dimensions of any residence sold will be determined by the contract of sale and may differ from the depicted. Whilst every effort is made to provide accurate and complete information, the developer does not warrant or represent that the information in this floor plan is free from errors or omissions or is suitable for your intended use. All apartment and balcony areas are calculated as Gross Floor Area in accordance with the Method of Measurement for Residential Property as published by the Property Council of Australia. Subject to any terms implied by law which cannot be excluded, the developer accepts no responsibility for any loss, damage, cost or expense (wether direct or indirect) by you as a result of any error, omission or misrepresentation in information. All information is subject to change without notice.



# CENTREPIECE

*Residences*

APARTMENT

5.06

BEDROOM(S)

2

BATHROOM(S)

2

INTERNAL

71 m<sup>2</sup>

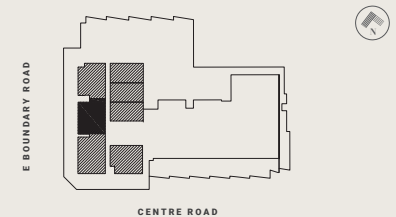
EXTERNAL

20 m<sup>2</sup>

TOTAL

91.0 m<sup>2</sup>

LEVEL FIVE KEY PLAN



DISCLAIMER

The information provided is illustrative only and may not be relied upon. In particular the final area dimensions of any residence sold will be determined by the contract of sale and may differ from the depicted. Whilst every effort is made to provide accurate and complete information, the developer does not warrant or represent that the information in this floor plan is free from errors or omissions or is suitable for your intended use. All apartment and balcony areas are calculated as Gross Floor Area in accordance with the Method of Measurement for Residential Property as published by the Property Council of Australia. Subject to any terms implied by law which cannot be excluded, the developer accepts no responsibility for any loss, damage, cost or expense (wether direct or indirect) by you as a result of any error, omission or misrepresentation in information. All information is subject to change without notice.