



*THREE
BEDROOMS*



CENTREPIECE

Residences

APARTMENT

G.18

BEDROOM(S)

3

BATHROOM(S)

2

INTERNAL

100 m²

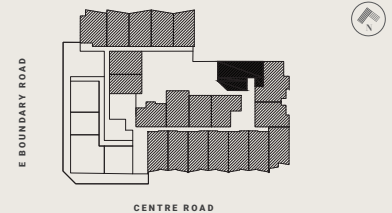
EXTERNAL

48 m²

TOTAL

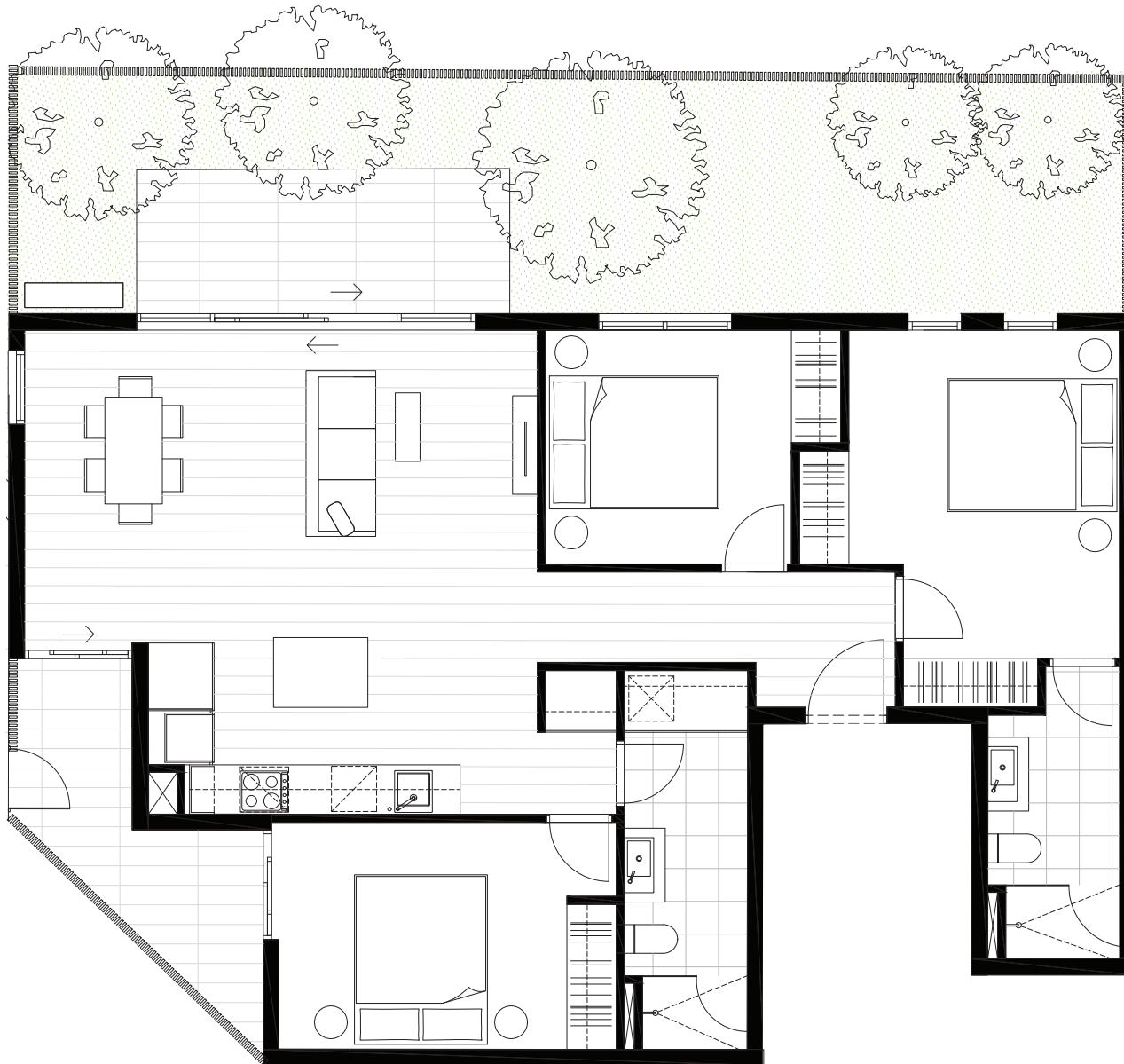
148.1 m²

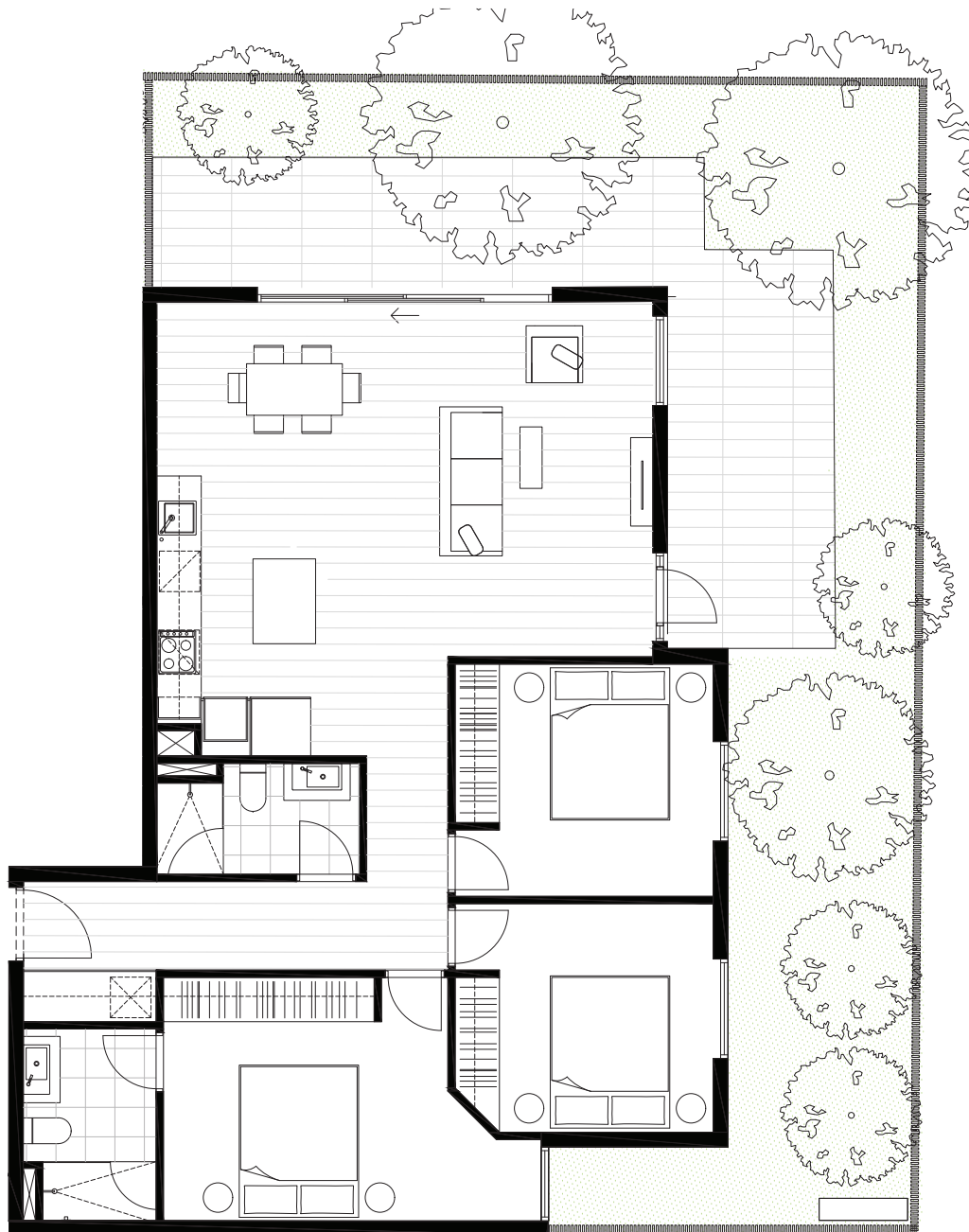
GROUND LEVEL KEY PLAN



DISCLAIMER

The information provided is illustrative only and may not be relied upon. In particular the final area dimensions of any residence sold will be determined by the contract of sale and may differ from the depicted. Whilst every effort is made to provide accurate and complete information, the developer does not warrant or represent that the information in this floor plan is free from errors or omissions or is suitable for your intended use. All apartment and balcony areas are calculated as Gross Floor Area in accordance with the Method of Measurement for Residential Property as published by the Property Council of Australia. Subject to any terms implied by law which cannot be excluded, the developer accepts no responsibility for any loss, damage, cost or expense (wether direct or indirect) by you as a result of any error, omission or misrepresentation in information. All information is subject to change without notice.





CENTREPIECE

Residences

APARTMENT

G.19

BEDROOM(S)

3

BATHROOM(S)

2

INTERNAL

103 m²

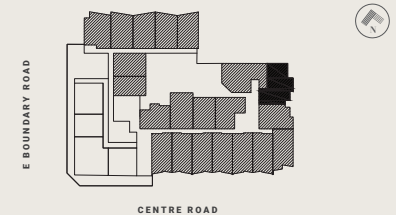
EXTERNAL

70 m²

TOTAL

172.9 m²

GROUND LEVEL KEY PLAN



DISCLAIMER

The information provided is illustrative only and may not be relied upon. In particular the final area dimensions of any residence sold will be determined by the contract of sale and may differ from the depicted. Whilst every effort is made to provide accurate and complete information, the developer does not warrant or represent that the information in this floor plan is free from errors or omissions or is suitable for your intended use. All apartment and balcony areas are calculated as Gross Floor Area in accordance with the Method of Measurement for Residential Property as published by the Property Council of Australia. Subject to any terms implied by law which cannot be excluded, the developer accepts no responsibility for any loss, damage, cost or expense (wether direct or indirect) by you as a result of any error, omission or misrepresentation in information. All information is subject to change without notice.



CENTREPIECE

Residences

APARTMENT

3.01

BEDROOM(S)

3

BATHROOM(S)

2

INTERNAL

107 m²

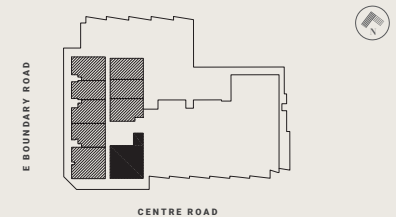
EXTERNAL

10 m²

TOTAL

117.3 m²

LEVEL THREE KEY PLAN

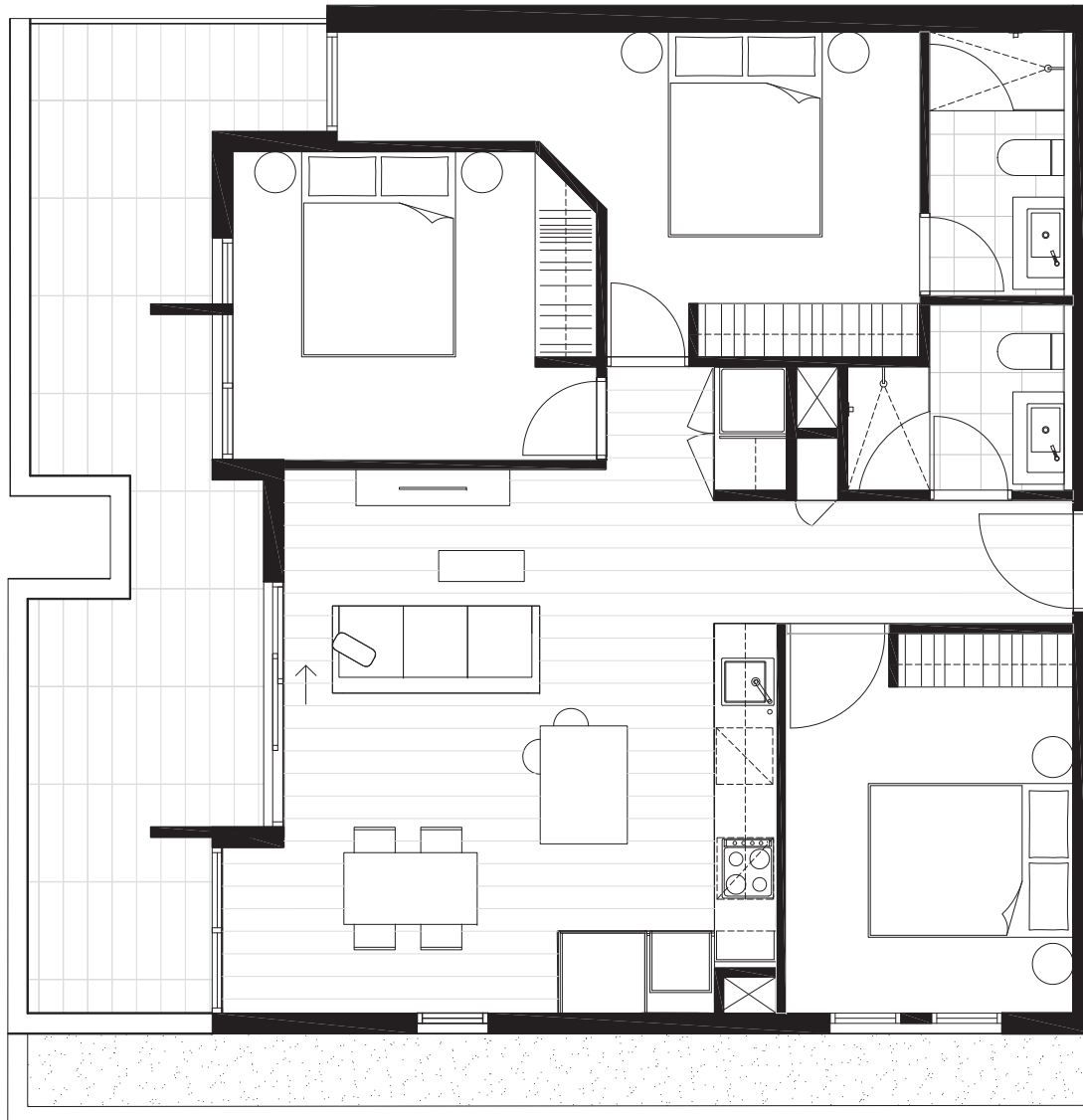


DISCLAIMER

The information provided is illustrative only and may not be relied upon. In particular the final area dimensions of any residence sold will be determined by the contract of sale and may differ from the depicted. Whilst every effort is made to provide accurate and complete information, the developer does not warrant or represent that the information in this floor plan is free from errors or omissions or is suitable for your intended use. All apartment and balcony areas are calculated as Gross Floor Area in accordance with the Method of Measurement for Residential Property as published by the Property Council of Australia. Subject to any terms implied by law which cannot be excluded, the developer accepts no responsibility for any loss, damage, cost or expense (wether direct or indirect) by you as a result of any error, omission or misrepresentation in information. All information is subject to change without notice.

CENTREPIECE

Residences



APARTMENT

3.10

BEDROOM(S)

3

BATHROOM(S)

2

INTERNAL

82 m²

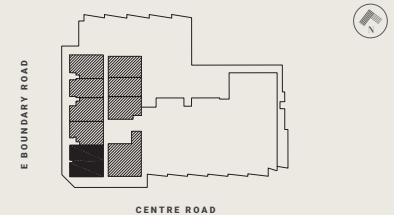
EXTERNAL

22 m²

TOTAL

103.9 m²

LEVEL THREE KEY PLAN



DISCLAIMER

The information provided is illustrative only and may not be relied upon. In particular the final area dimensions of any residence sold will be determined by the contract of sale and may differ from the depicted. Whilst every effort is made to provide accurate and complete information, the developer does not warrant or represent that the information in this floor plan is free from errors or omissions or is suitable for your intended use. All apartment and balcony areas are calculated as Gross Floor Area in accordance with the Method of Measurement for Residential Property as published by the Property Council of Australia. Subject to any terms implied by law which cannot be excluded, the developer accepts no responsibility for any loss, damage, cost or expense (wether direct or indirect) by you as a result of any error, omission or misrepresentation in information. All information is subject to change without notice.

CENTREPIECE

Residences



APARTMENT

4.01

BEDROOM(S)

3

BATHROOM(S)

2

INTERNAL

107 m²

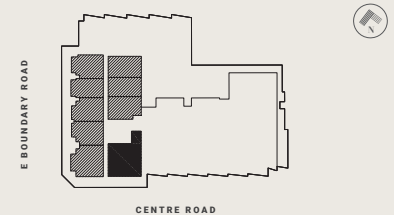
EXTERNAL

10 m²

TOTAL

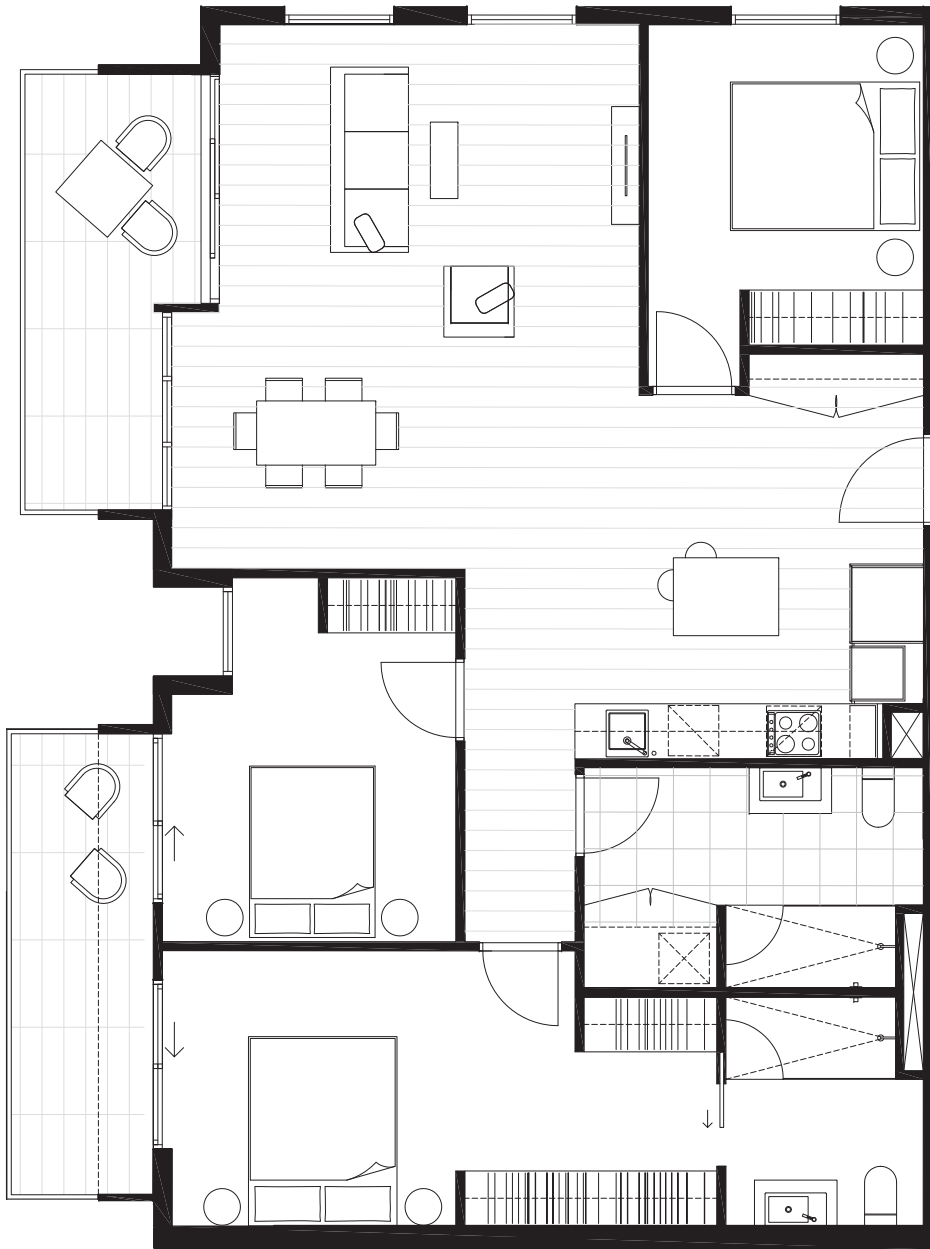
117.3 m²

LEVEL FOUR KEY PLAN



DISCLAIMER

The information provided is illustrative only and may not be relied upon. In particular the final area dimensions of any residence sold will be determined by the contract of sale and may differ from the depicted. Whilst every effort is made to provide accurate and complete information, the developer does not warrant or represent that the information in this floor plan is free from errors or omissions or is suitable for your intended use. All apartment and balcony areas are calculated as Gross Floor Area in accordance with the Method of Measurement for Residential Property as published by the Property Council of Australia. Subject to any terms implied by law which cannot be excluded, the developer accepts no responsibility for any loss, damage, cost or expense (wether direct or indirect) by you as a result of any error, omission or misrepresentation in information. All information is subject to change without notice.



CENTREPIECE

Residences

APARTMENT

4.06

BEDROOM(S)

3

BATHROOM(S)

2

INTERNAL

113 m²

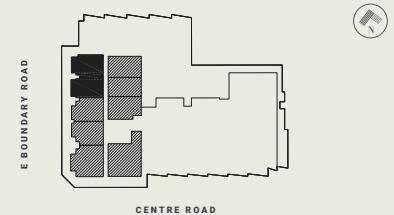
EXTERNAL

17 m²

TOTAL

129.9 m²

LEVEL FOUR KEY PLAN



DISCLAIMER

The information provided is illustrative only and may not be relied upon. In particular the final area dimensions of any residence sold will be determined by the contract of sale and may differ from the depicted. Whilst every effort is made to provide accurate and complete information, the developer does not warrant or represent that the information in this floor plan is free from errors or omissions or is suitable for your intended use. All apartment and balcony areas are calculated as Gross Floor Area in accordance with the Method of Measurement for Residential Property as published by the Property Council of Australia. Subject to any terms implied by law which cannot be excluded, the developer accepts no responsibility for any loss, damage, cost or expense (wether direct or indirect) by you as a result of any error, omission or misrepresentation in information. All information is subject to change without notice.

CENTREPIECE

Residences



APARTMENT

4.10

BEDROOM(S)

3

BATHROOM(S)

2

INTERNAL

82 m²

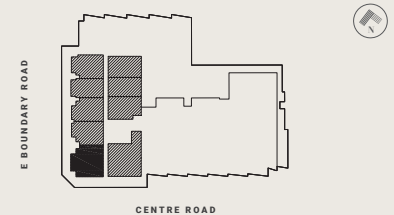
EXTERNAL

10 m²

TOTAL

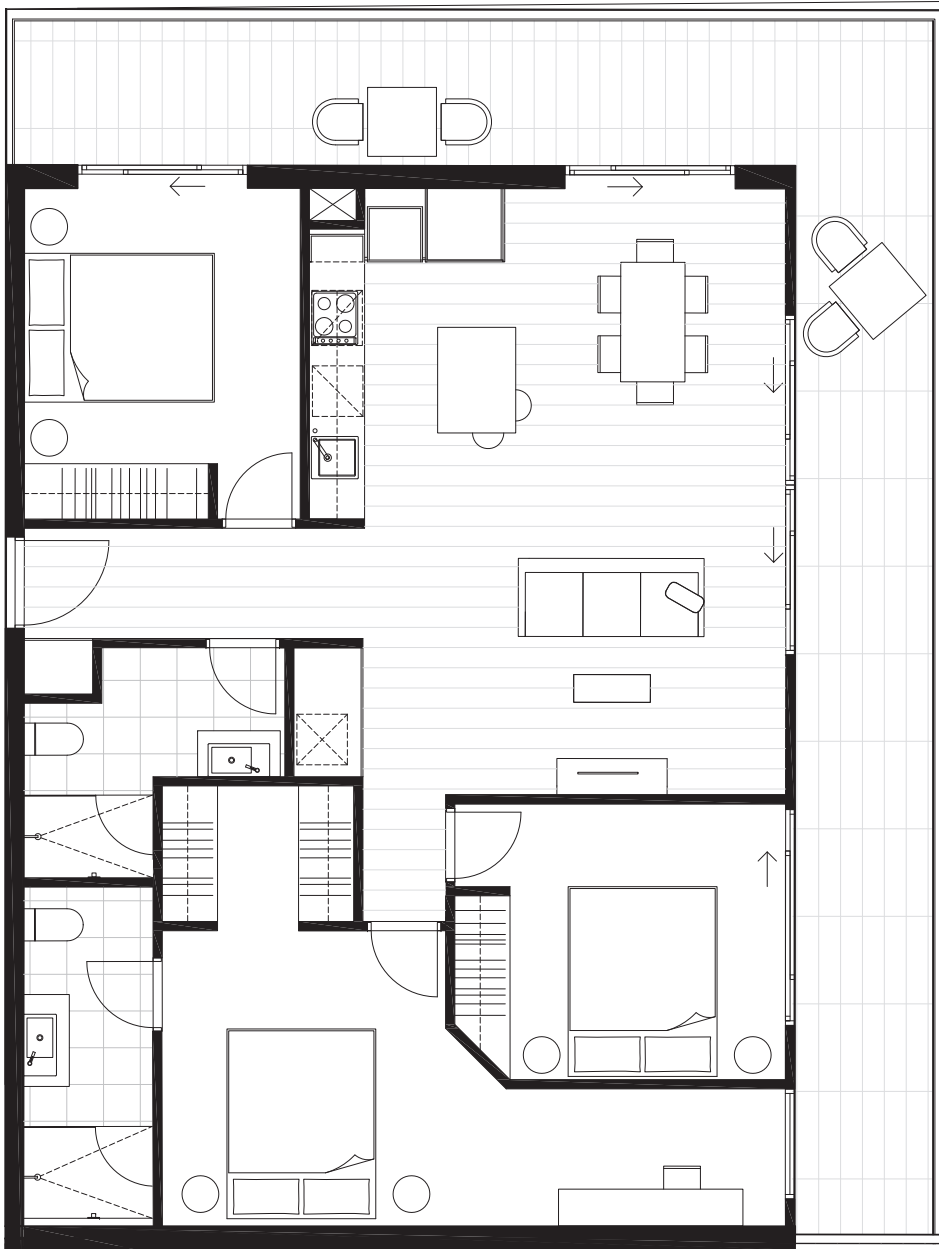
92.6 m²

LEVEL FOUR KEY PLAN



DISCLAIMER

The information provided is illustrative only and may not be relied upon. In particular the final area dimensions of any residence sold will be determined by the contract of sale and may differ from the depicted. Whilst every effort is made to provide accurate and complete information, the developer does not warrant or represent that the information in this floor plan is free from errors or omissions or is suitable for your intended use. All apartment and balcony areas are calculated as Gross Floor Area in accordance with the Method of Measurement for Residential Property as published by the Property Council of Australia. Subject to any terms implied by law which cannot be excluded, the developer accepts no responsibility for any loss, damage, cost or expense (wether direct or indirect) by you as a result of any error, omission or misrepresentation in information. All information is subject to change without notice.



CENTREPIECE

Residences

APARTMENT

5.03

BEDROOM(S)

3

BATHROOM(S)

2

INTERNAL

100 m²

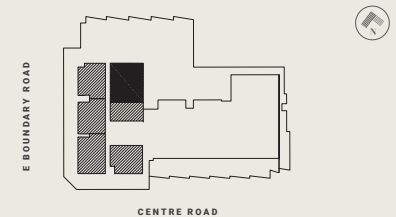
EXTERNAL

36 m²

TOTAL

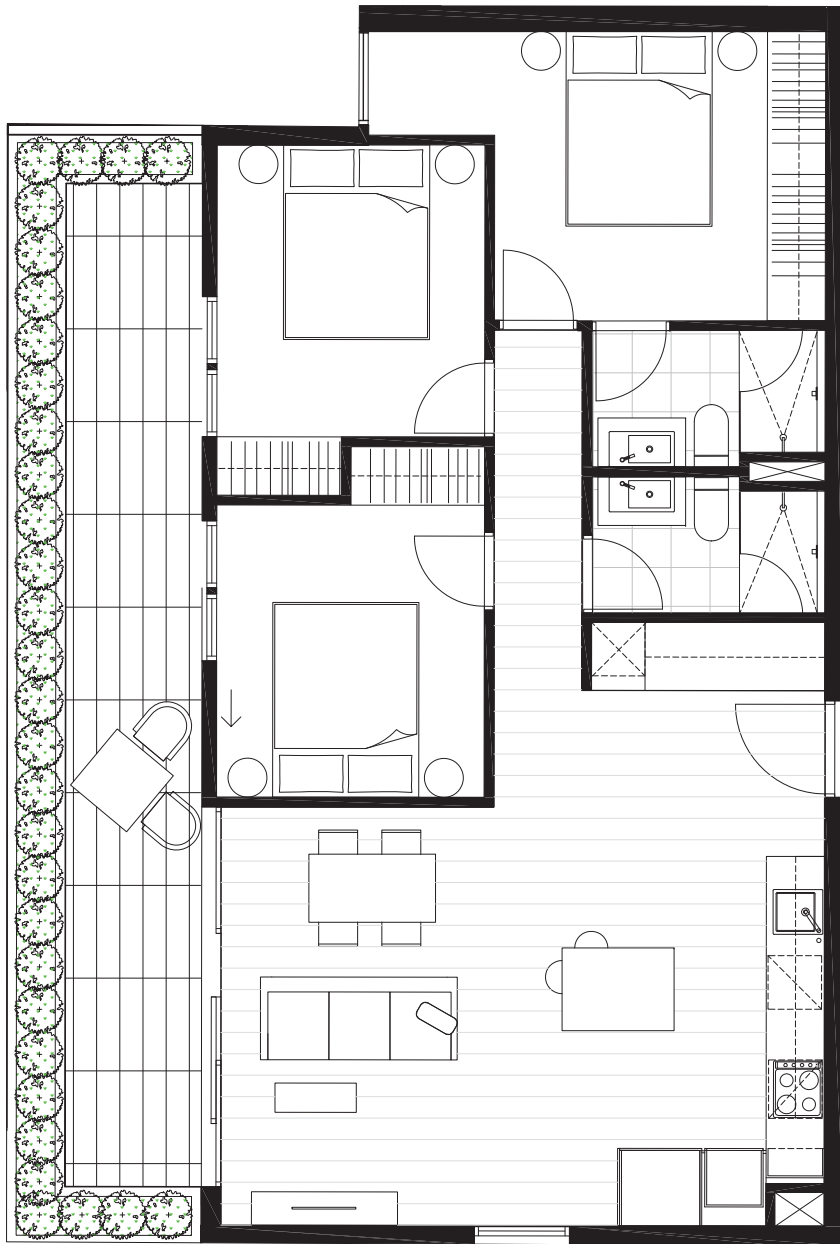
136.3 m²

LEVEL FIVE KEY PLAN



DISCLAIMER

The information provided is illustrative only and may not be relied upon. In particular the final area dimensions of any residence sold will be determined by the contract of sale and may differ from the depicted. Whilst every effort is made to provide accurate and complete information, the developer does not warrant or represent that the information in this floor plan is free from errors or omissions or is suitable for your intended use. All apartment and balcony areas are calculated as Gross Floor Area in accordance with the Method of Measurement for Residential Property as published by the Property Council of Australia. Subject to any terms implied by law which cannot be excluded, the developer accepts no responsibility for any loss, damage, cost or expense (wether direct or indirect) by you as a result of any error, omission or misrepresentation in information. All information is subject to change without notice.



CENTREPIECE

Residences

APARTMENT

5.07

BEDROOM(S)

3

BATHROOM(S)

2

INTERNAL

81 m²

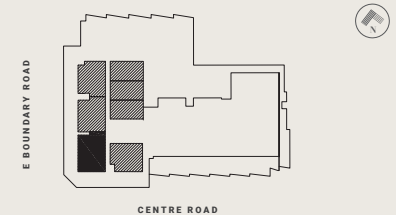
EXTERNAL

23 m²

TOTAL

104.4 m²

LEVEL FIVE KEY PLAN



DISCLAIMER

The information provided is illustrative only and may not be relied upon. In particular the final area dimensions of any residence sold will be determined by the contract of sale and may differ from the depicted. Whilst every effort is made to provide accurate and complete information, the developer does not warrant or represent that the information in this floor plan is free from errors or omissions or is suitable for your intended use. All apartment and balcony areas are calculated as Gross Floor Area in accordance with the Method of Measurement for Residential Property as published by the Property Council of Australia. Subject to any terms implied by law which cannot be excluded, the developer accepts no responsibility for any loss, damage, cost or expense (wether direct or indirect) by you as a result of any error, omission or misrepresentation in information. All information is subject to change without notice.