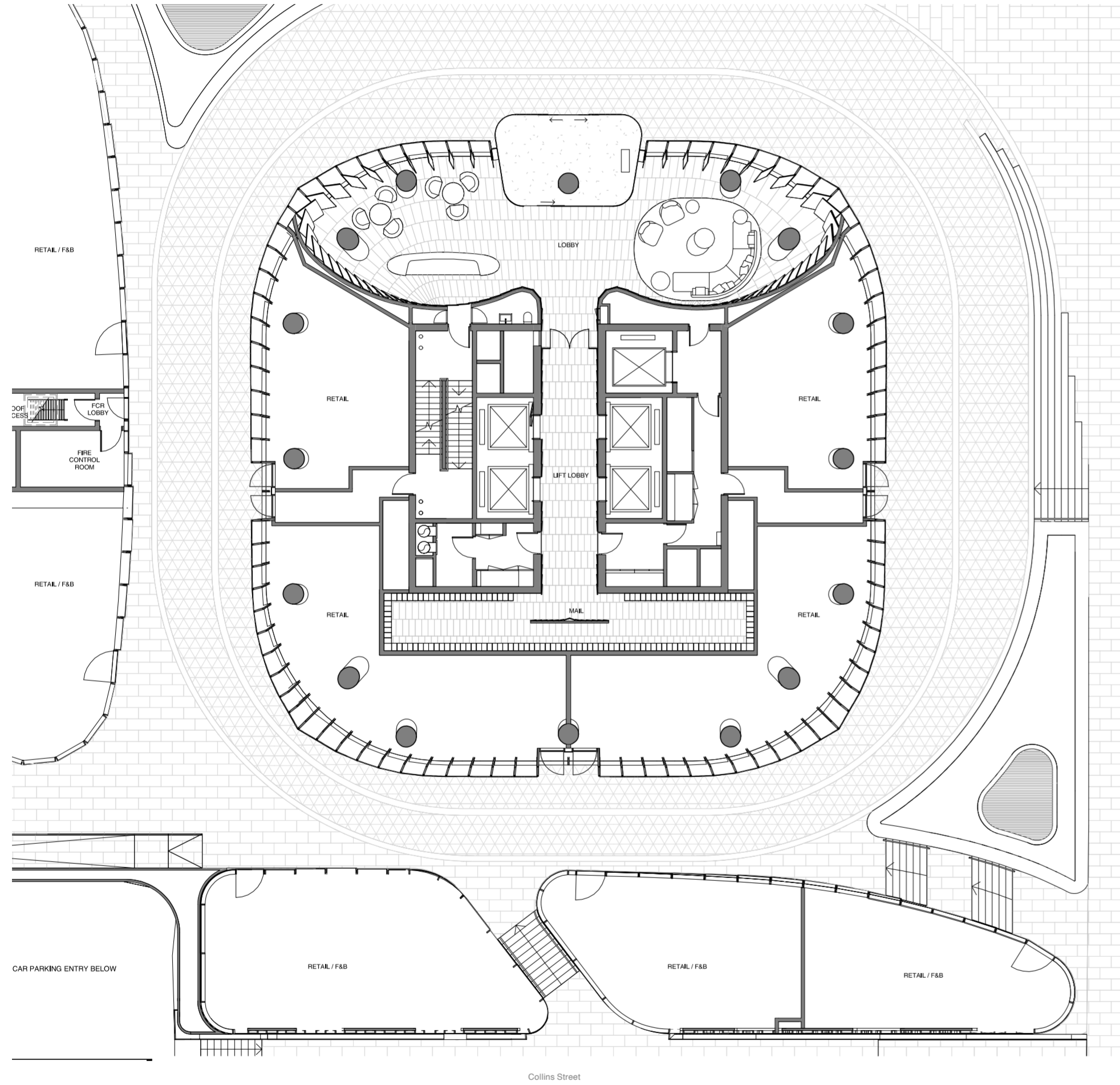
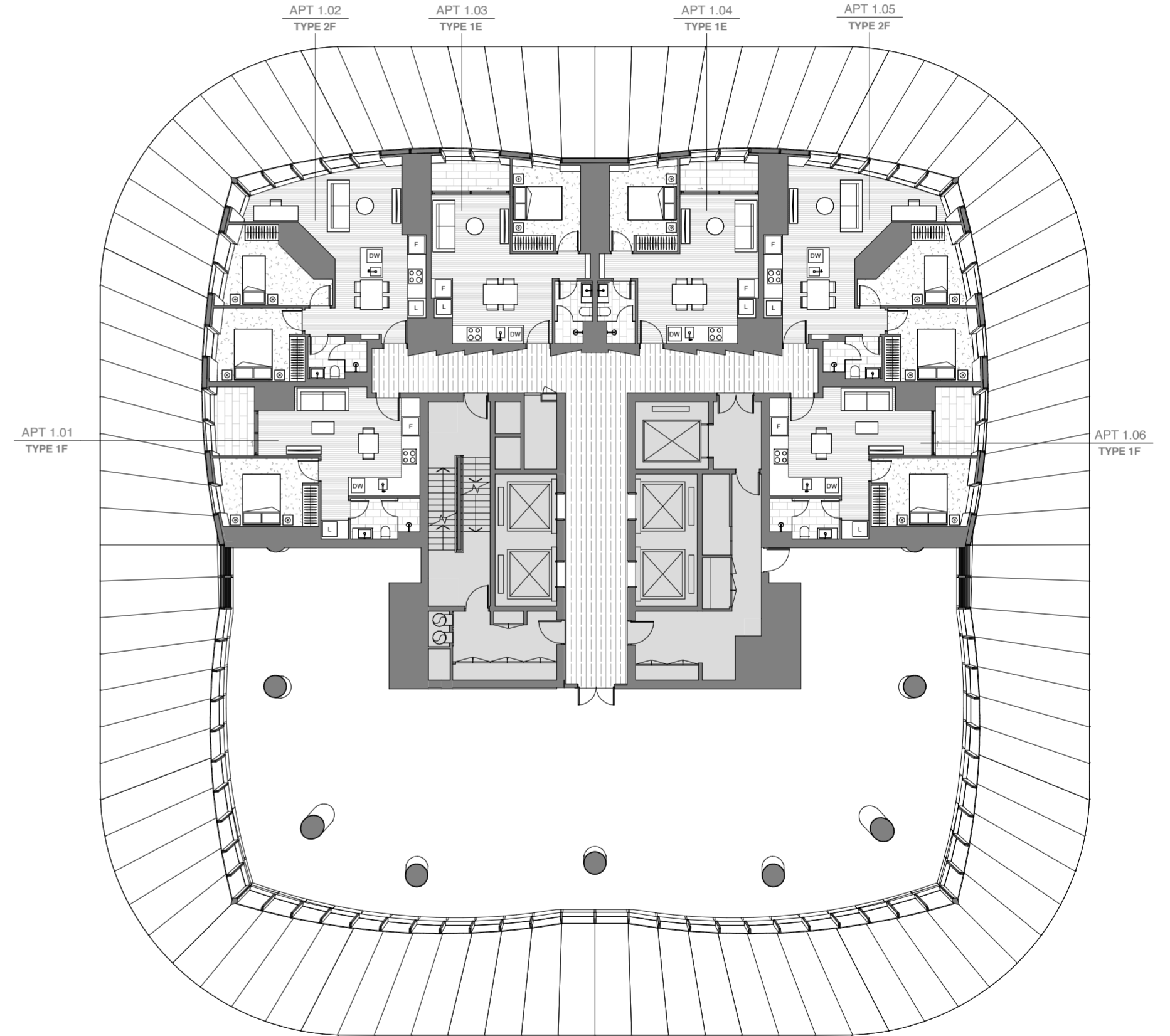


GROUND FLOORPLATE



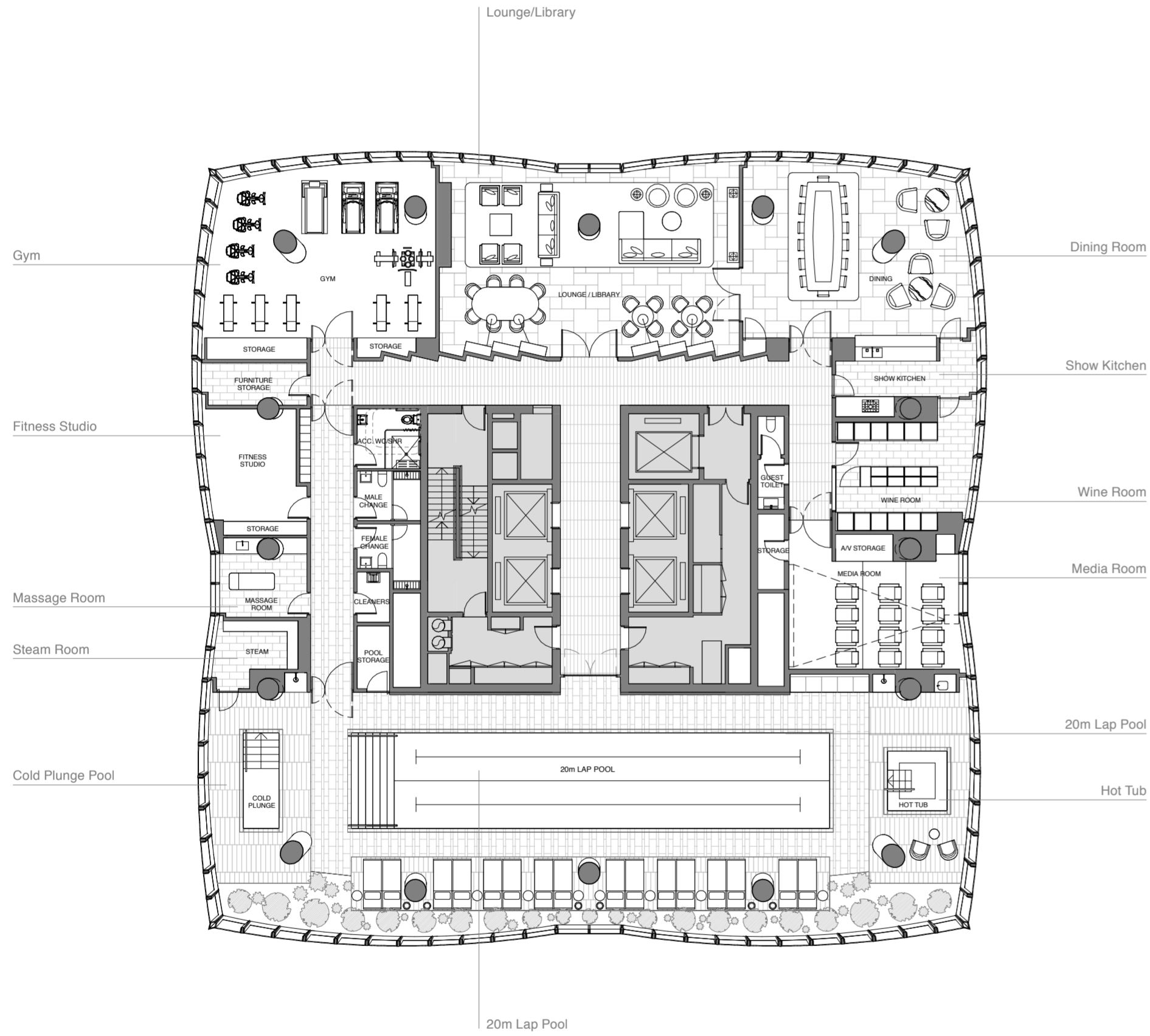
LEVEL 1 FLOORPLATE



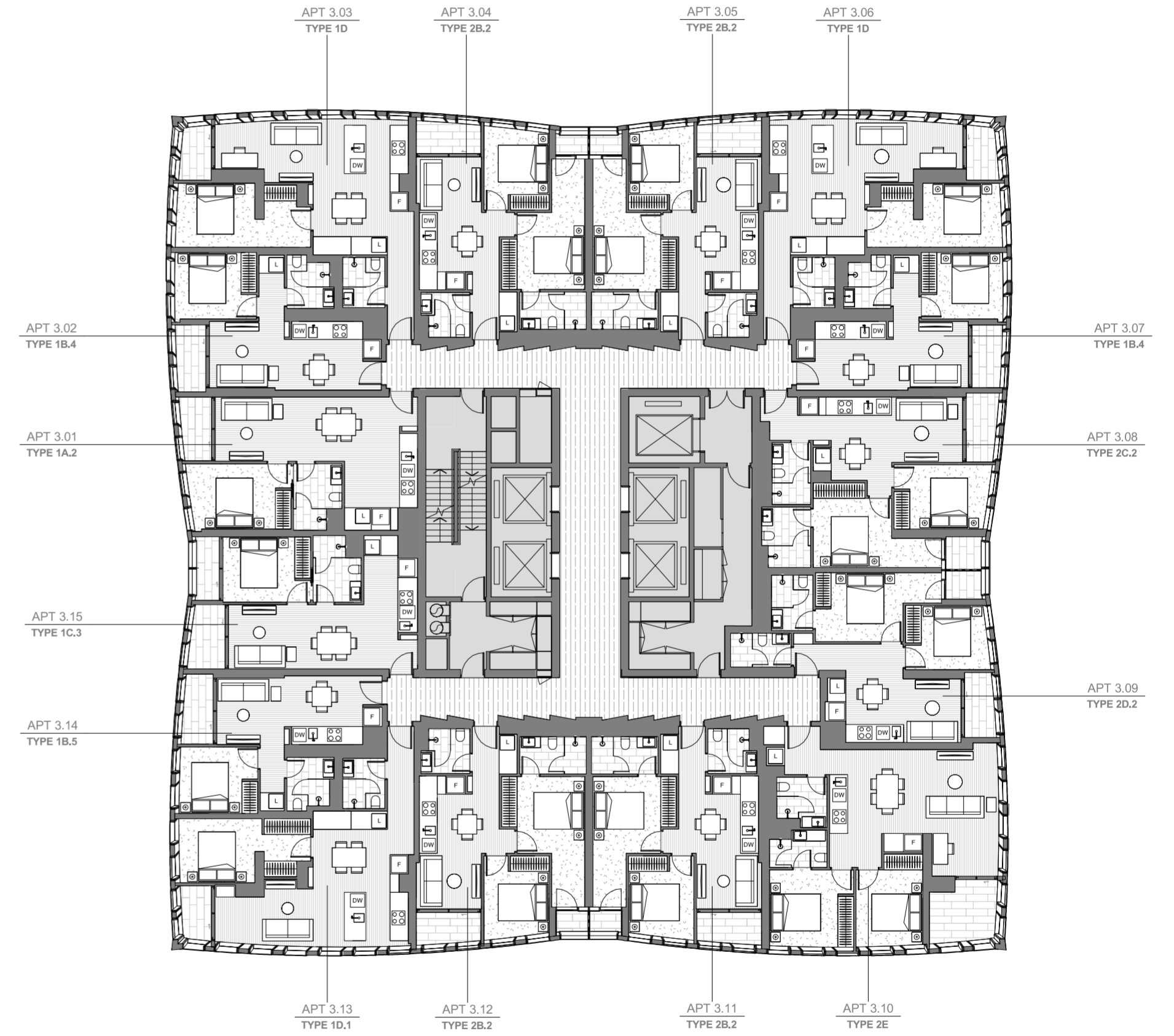
These floor plans were prepared before the completion of the design, engineering and construction elements of the project. The floor plans are intended only as a guide and an aid to further investigations by potential purchasers and are subject to change in relation to areas and dimensions, floor layout, design, engineering, fittings and specifications. There may be differences in areas and dimensions due to certain intended variances in the building facade. The areas and dimensions set out in the floor plans are calculated using the Property Council Method of Measurement for Residential Property current at the date of preparation of the floor plans. Prospective purchasers should make their own enquiries and obtain their own independent legal advice in relation to the contract of sale.

These floor plans were prepared before the completion of the design, engineering and construction elements of the project. The floor plans are intended only as a guide and an aid to further investigations by potential purchasers and are subject to change in relation to areas and dimensions, floor layout, design, engineering, fittings and specifications. There may be differences in areas and dimensions due to certain intended variances in the building facade. The areas and dimensions set out in the floor plans are calculated using the Property Council Method of Measurement for Residential Property current at the date of preparation of the floor plans. Prospective purchasers should make their own enquiries and obtain their own independent legal advice in relation to the contract of sale.

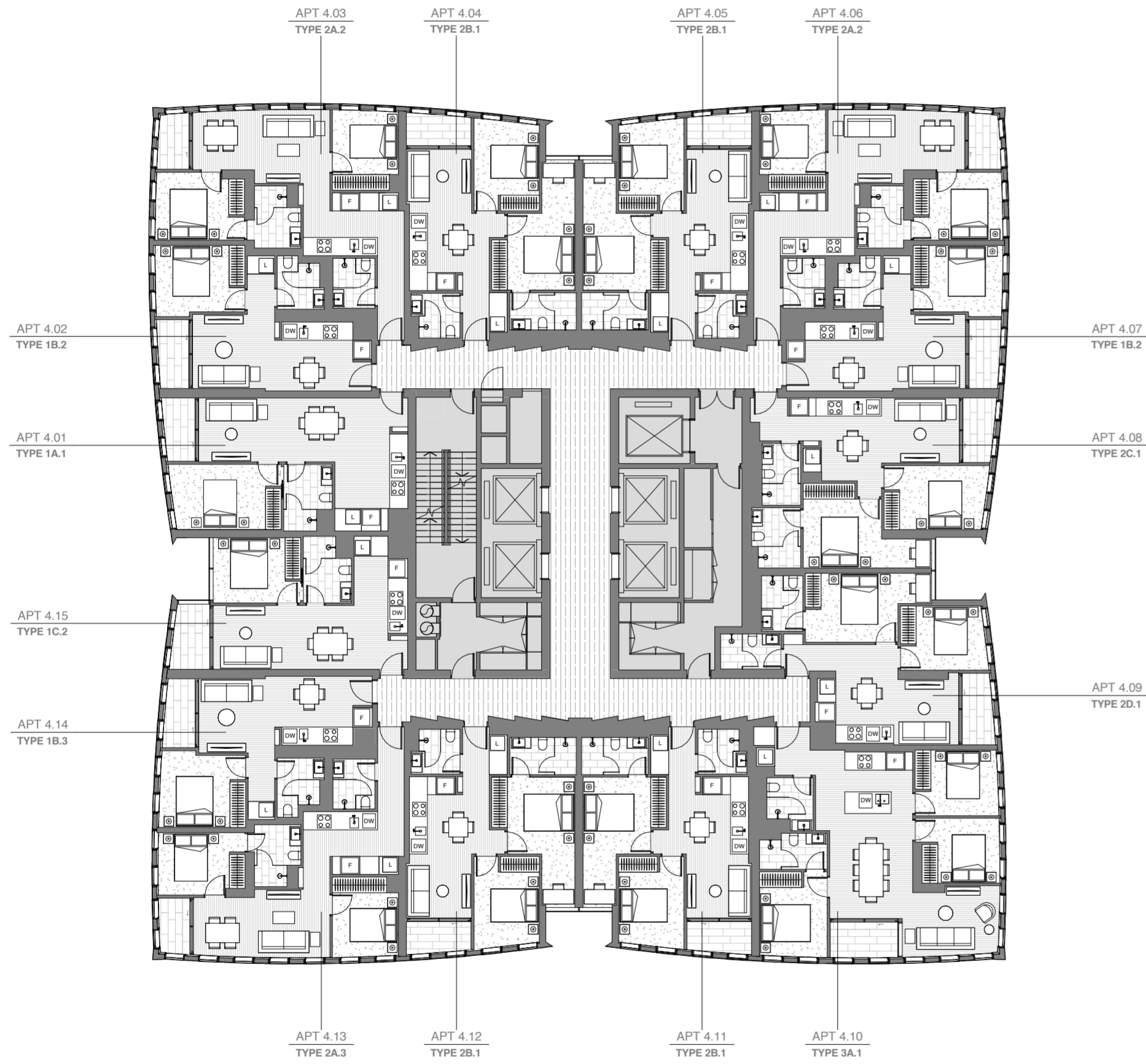
LEVEL 2
FLOORPLATE



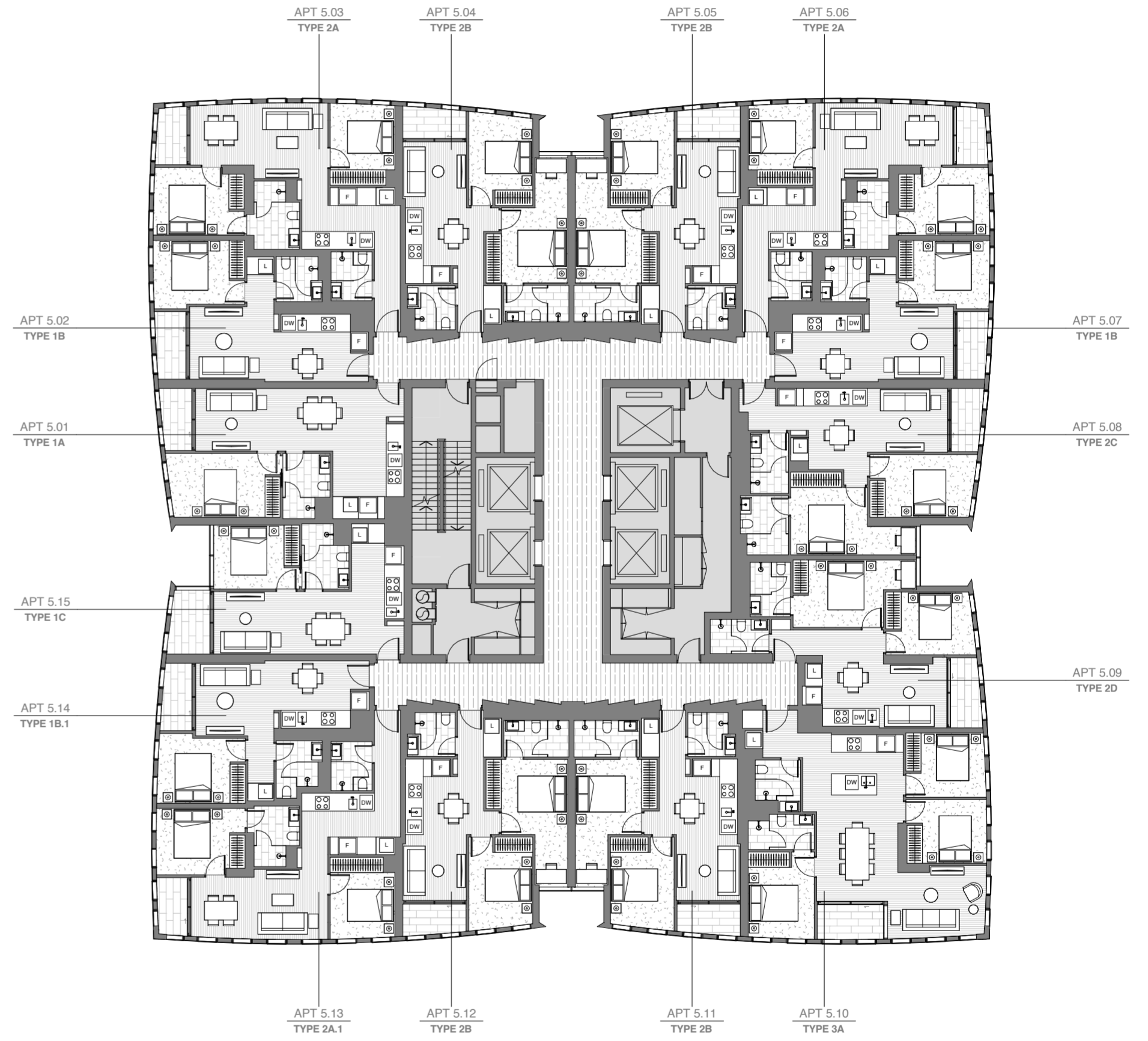
LEVEL 3
FLOORPLATE



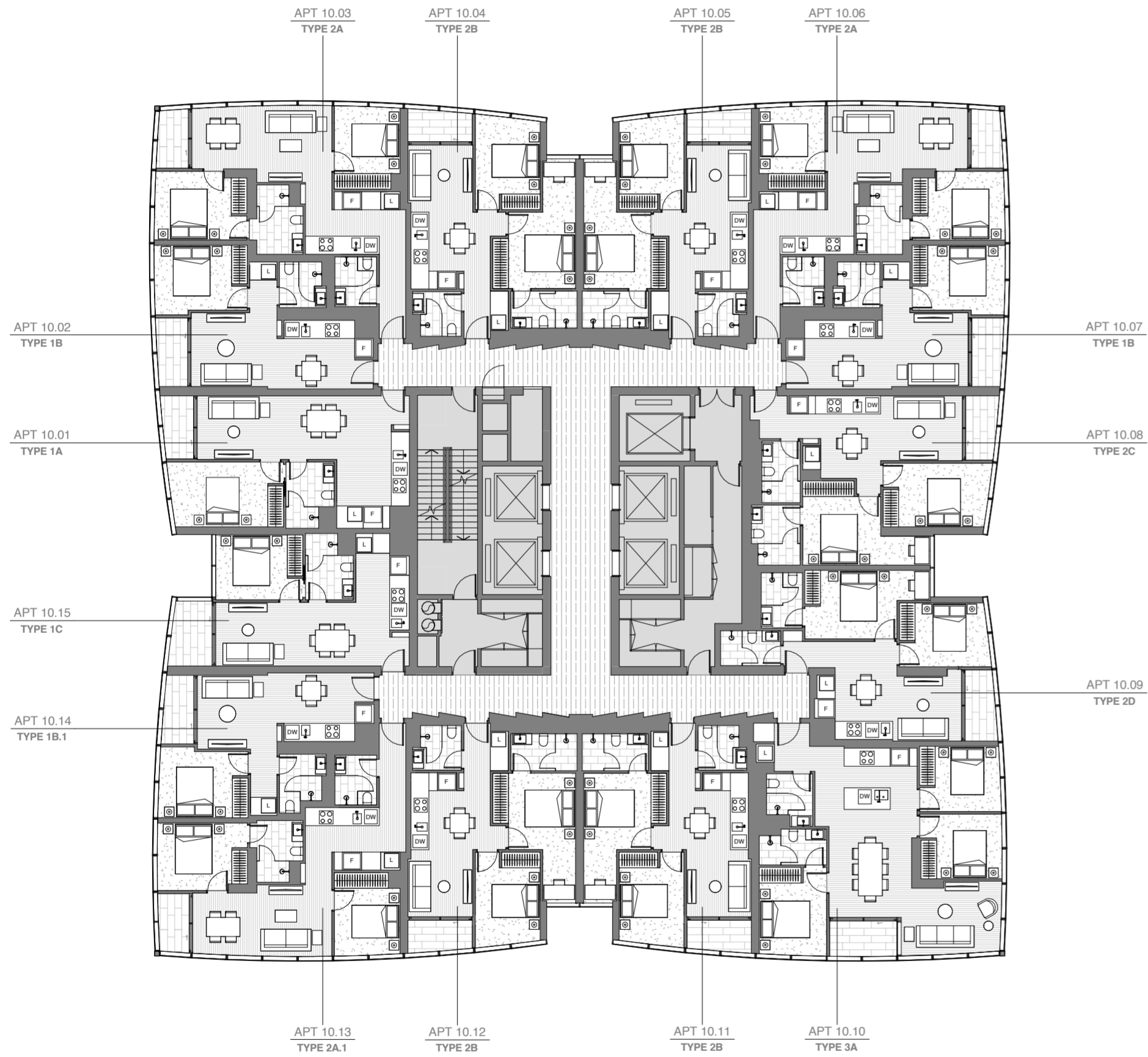
LEVEL 4
FLOORPLATE



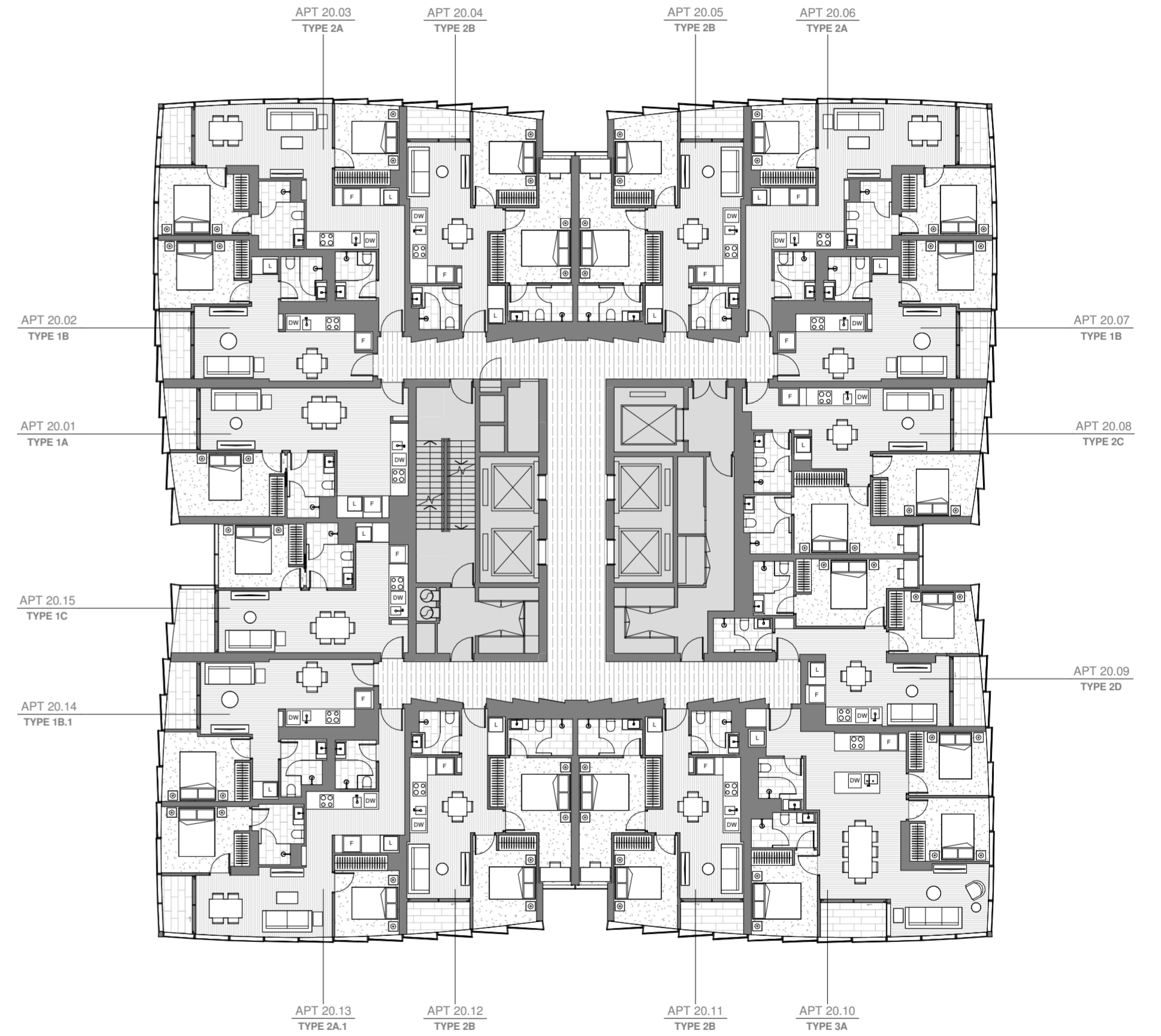
LEVEL 5
FLOORPLATE



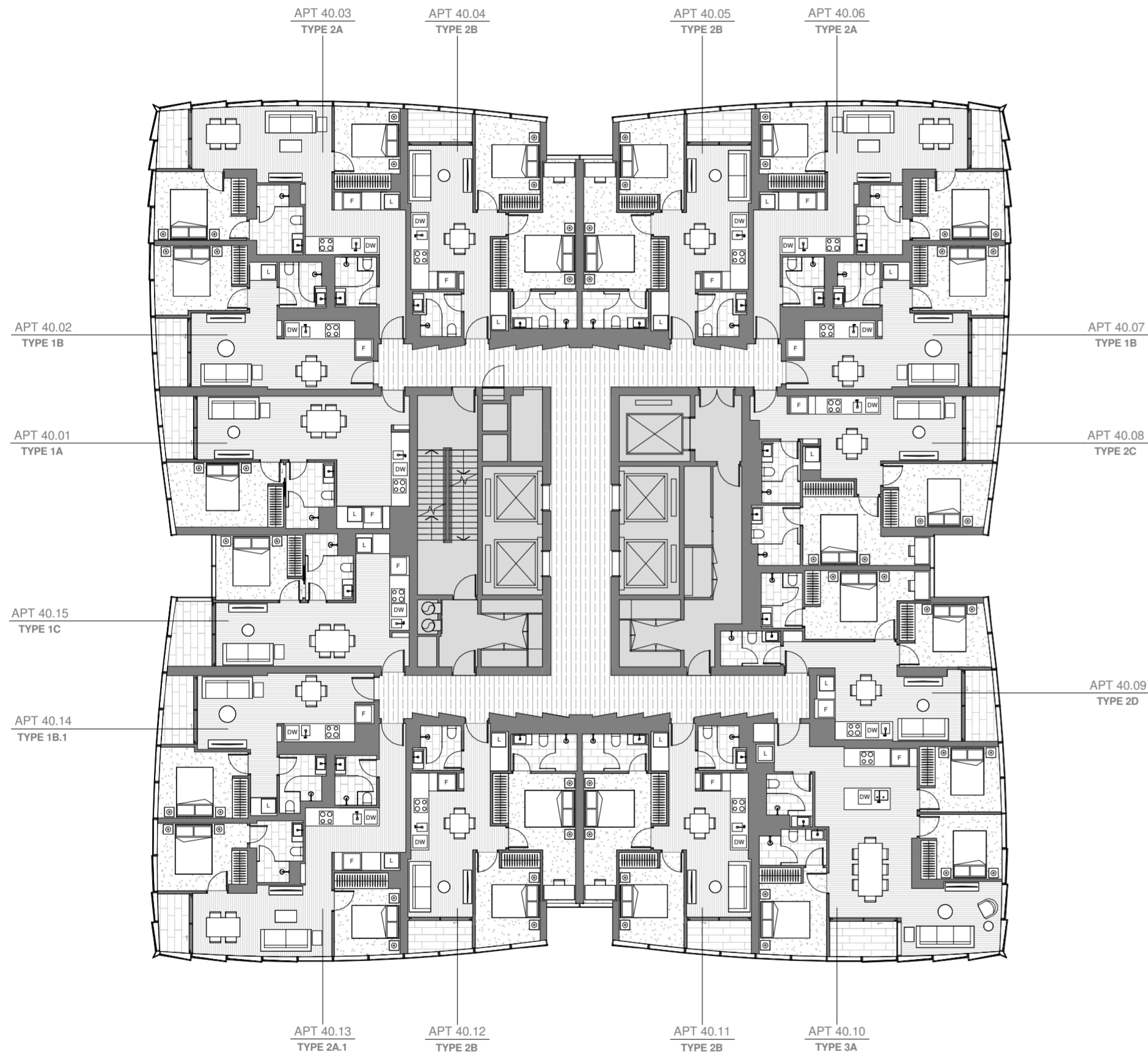
LEVEL 10
FLOORPLATE



LEVEL 20
FLOORPLATE



LEVEL 40
FLOORPLATE



LEVEL 43
FLOORPLATE

