

FLOOR PLANS



APARTMENT STYLE 1

SPECIFICATIONS

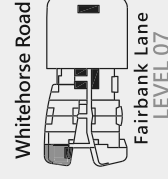
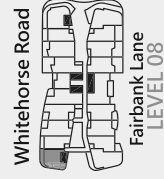
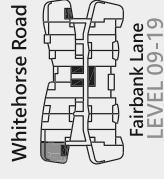


AREA (m²)

Internal 61.2

External 12.4

TOTAL 73.6



PANORAMA
BOX HILL

① Disclaimer: The information provided is illustrative only and may not be relied upon. In particular, the final area dimensions of any apartment sold will be determined by the contract of sale and may differ from the depicted. Whilst every effort is made to provide accurate and complete information, the developer does not warrant or represent that the information in this floor plan is free from errors or omissions or is suitable for your intended use. Subject to any terms implied by law which cannot be excluded, the developer accepts no responsibility for any loss, damage, cost or expense (whether direct or indirect) by you as a result of any error, omission or misrepresentation in information. Areas noted have derived from using the 'Property Council of Australia Method of Measurement'. All information is subject to change without notice.

APARTMENT STYLE 1a

SPECIFICATIONS

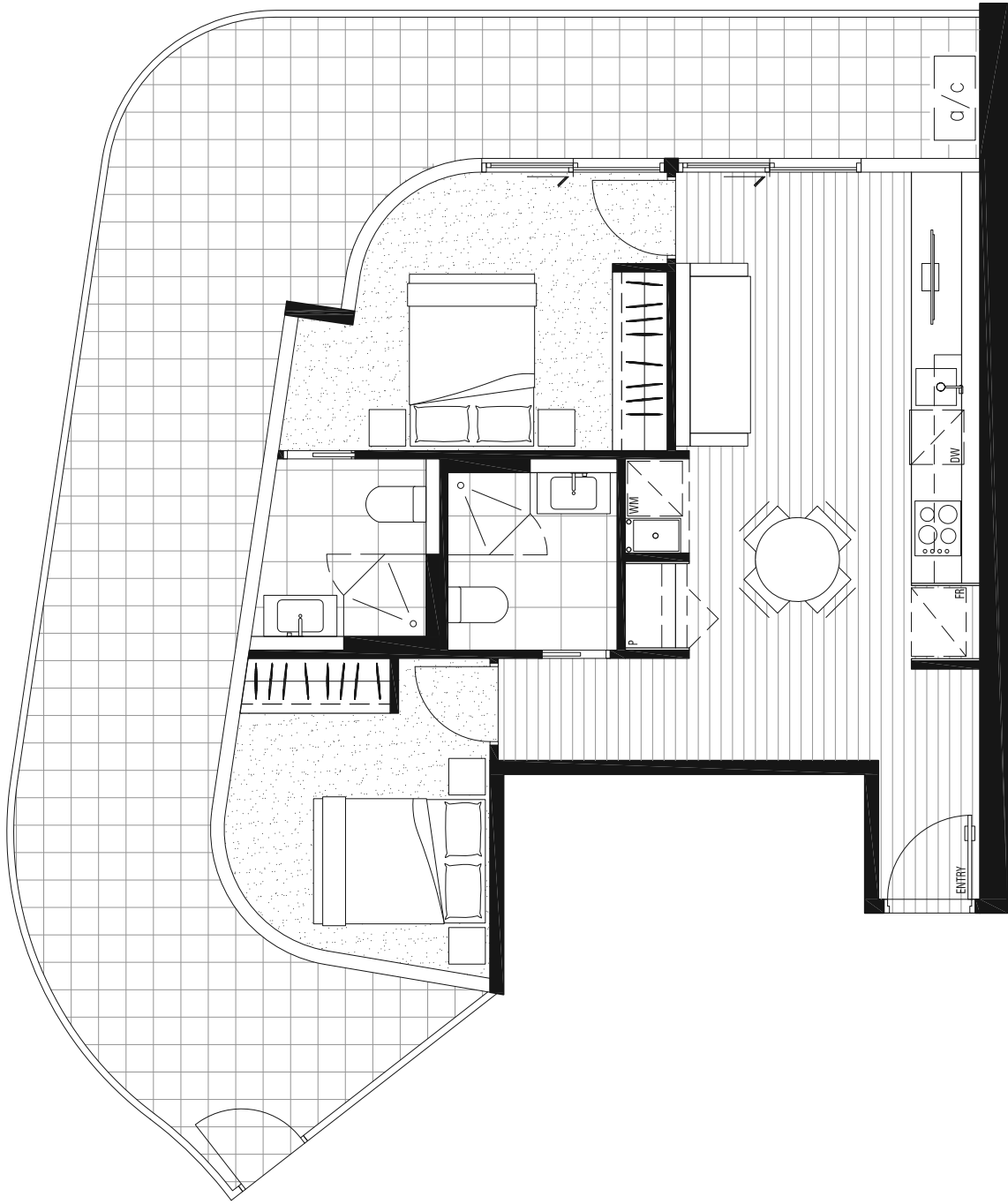
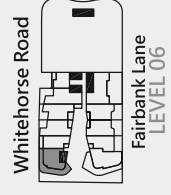


AREA (m²)

Internal 61.2

External 43.5

TOTAL 104.7



1 Disclaimer: The information provided is illustrative only and may not be relied upon. In particular, the final area dimensions of any apartment sold will be determined by the contract of sale and may differ from the depicted. Whilst every effort is made to provide accurate and complete information, the developer does not warrant or represent that the information in this floor plan is free from errors or omissions or is suitable for your intended use. Subject to any terms implied by law which cannot be excluded, the developer accepts no responsibility for any loss, damage, cost or expense (whether direct or indirect) by you as a result of any error, omission or misrepresentation in information. Areas noted have derived from using the 'Property Council of Australia Method of Measurement'. All information is subject to change without notice.

APARTMENT STYLE 2

SPECIFICATIONS

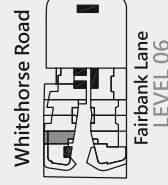
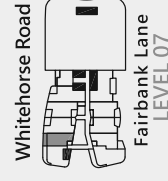
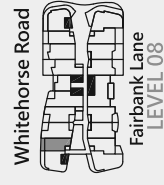
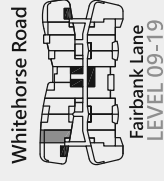


AREA (m²)

Internal 50.1

External 11.5

TOTAL 61.6



PANORAMA
BOX HILL

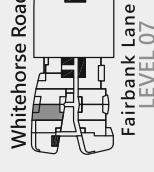
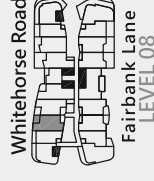
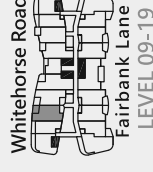
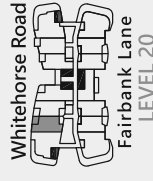
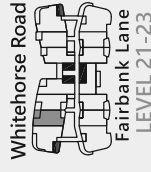
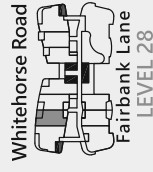
1 Disclaimer: The information provided is illustrative only and may not be relied upon. In particular, the final area dimensions of any apartment sold will be determined by the contract of sale and may differ from the depicted. Whilst every effort is made to provide accurate and complete information, the developer does not warrant or represent that the information in this floor plan is 'free from errors or omissions or is suitable for your intended use. Subject to any terms implied by law which cannot be excluded, the developer accepts no responsibility for any loss, damage, cost or expense (whether direct or indirect) by you as a result of any error, omission or misrepresentation in information. Areas noted have derived from using the 'Property Council of Australia Method of Measurement'. All information is subject to change without notice.

APARTMENT STYLE 3

SPECIFICATIONS

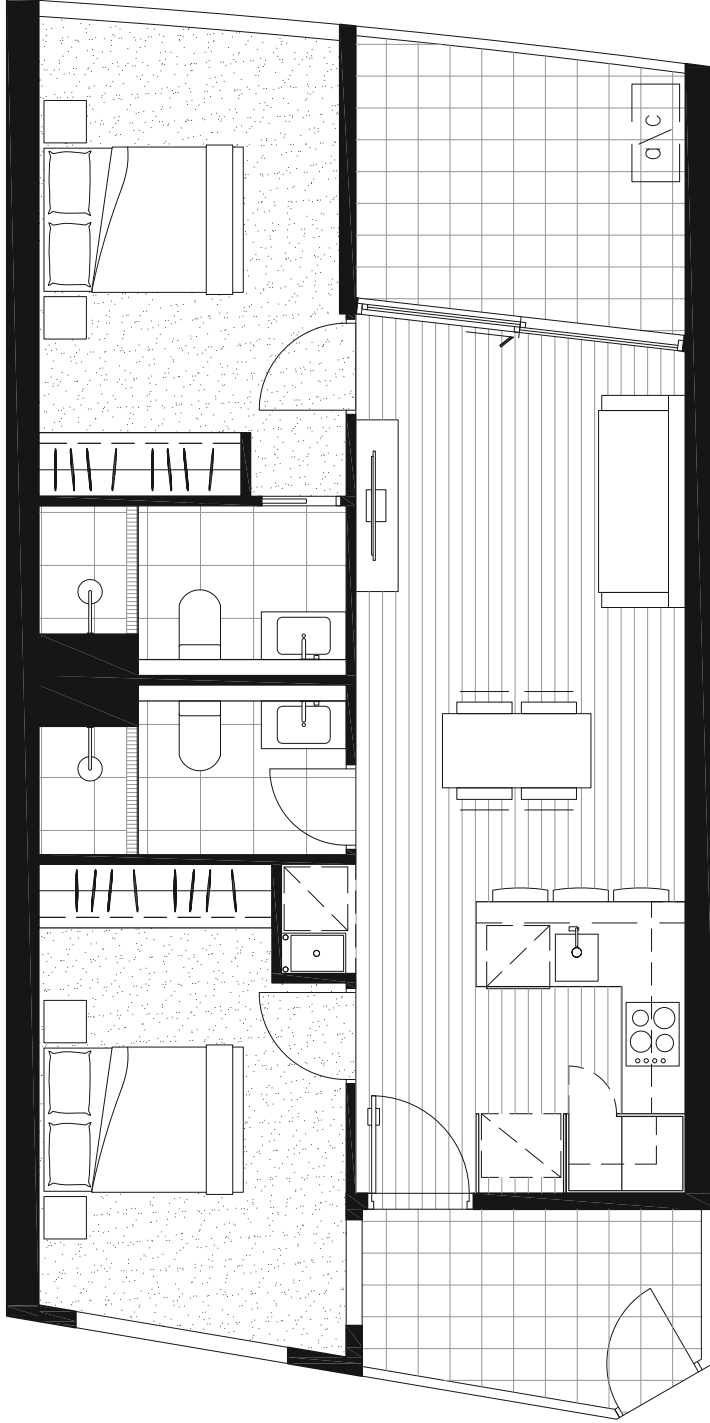


AREA (m ²)	
Internal	67.0
External	14.0
TOTAL	80.9



PANORAMA

BOX HILL



①

Disclaimer: The information provided is illustrative only and may not be relied upon. In particular, the final area dimensions of any apartment sold will be determined by the contract of sale and may differ from the depicted. Whilst every effort is made to provide accurate and complete information, the developer does not warrant or represent that the information in this floor plan is free from errors or omissions or is suitable for your intended use. Subject to any terms implied by law which cannot be excluded, the developer accepts no responsibility for any loss, damage, cost or expense (whether direct or indirect) by you as a result of any error, omission or misrepresentation in information. Areas noted have derived from using the 'Property Council of Australia Method of Measurement'. All information is subject to change without notice.

APARTMENT STYLE 3a

SPECIFICATIONS



AREA (m²)

Internal 67.0

External 16.9

TOTAL 83.9

Whitehorse Road

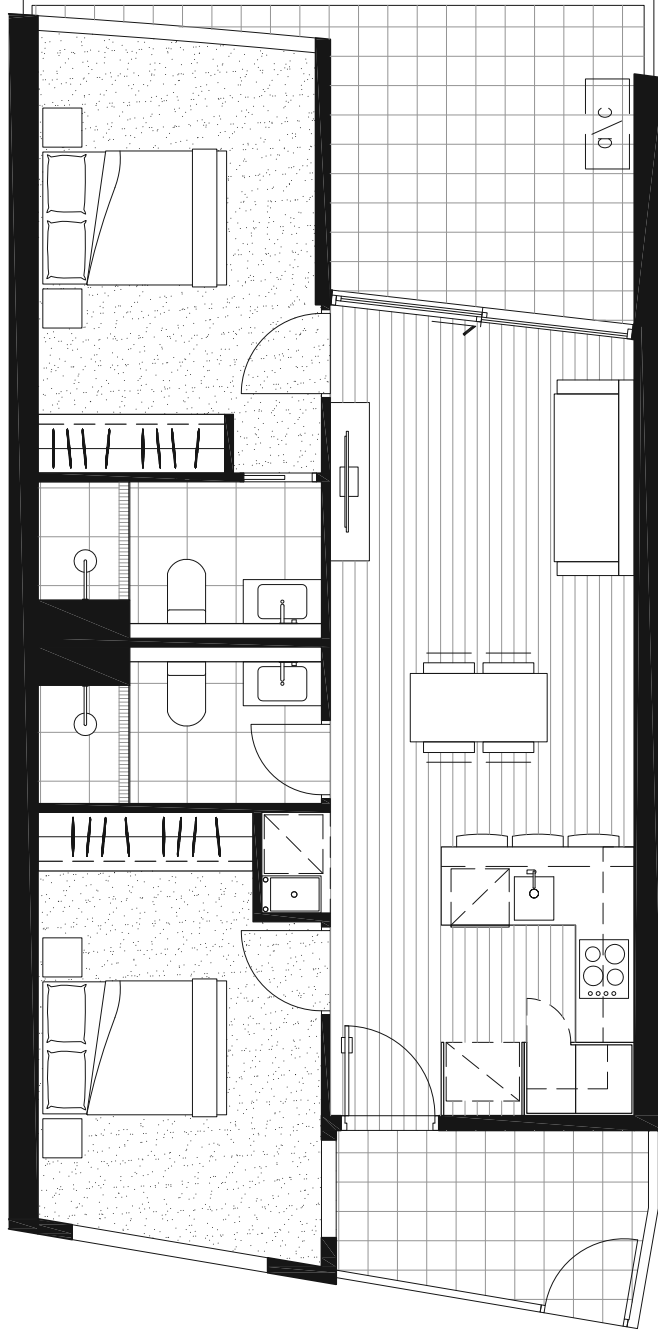


Fairbank Lane
LEVEL 06



PANORAMA

BOX HILL



① Disclaimer: The information provided is illustrative only and may not be relied upon. In particular, the final area dimensions of any apartment sold will be determined by the contract of sale and may differ from the depicted. Whilst every effort is made to provide accurate and complete information, the developer does not warrant or represent that the information in this floor plan is free from errors or omissions or is suitable for your intended use. Subject to any terms implied by law which cannot be excluded, the developer accepts no responsibility for any loss, damage, cost or expense (whether direct or indirect) by you as a result of any error, omission or misrepresentation in information. Areas noted have derived from using the 'Property Council of Australia Method of Measurement'. All information is subject to change without notice.

APARTMENT STYLE 4

SPECIFICATIONS



AREA (m²)

Internal 65.3

External 15.5

TOTAL 80.8

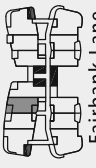
Whitehorse Road



Fairbank Lane

LEVEL 29

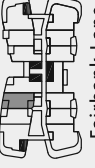
Whitehorse Road



Fairbank Lane

LEVEL 24-27

Whitehorse Road



Fairbank Lane

LEVEL 20

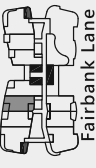
Whitehorse Road



Fairbank Lane

LEVEL 08

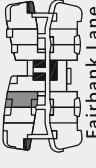
Whitehorse Road



Fairbank Lane

LEVEL 28

Whitehorse Road



Fairbank Lane

LEVEL 21-23

Whitehorse Road



Fairbank Lane

LEVEL 09-19

Whitehorse Road



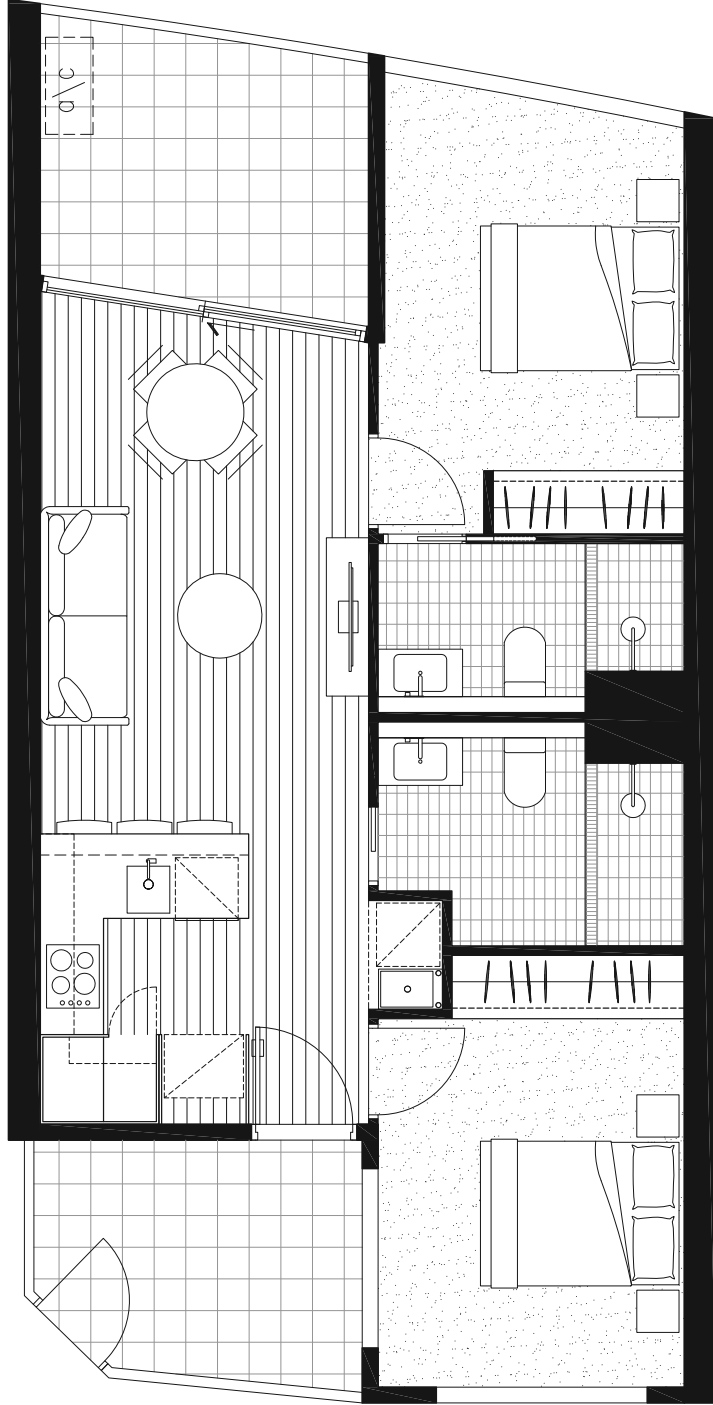
Fairbank Lane

LEVEL 07



PANORAMA

BOX HILL



ⓘ Disclaimer: The information provided is illustrative only and may not be relied upon. In particular, the final area dimensions of any apartment sold will be determined by the contract of sale and may differ from the depicted. Whilst every effort is made to provide accurate and complete information, the developer does not warrant or represent that the information in this floor plan is free from errors or omissions or is suitable for your intended use. Subject to any terms implied by law which cannot be excluded, the developer accepts no responsibility for any loss, damage, cost or expense (whether direct or indirect) by you as a result of any error, omission or misrepresentation in information. Areas noted have derived from using the 'Property Council of Australia Method of Measurement'. All information is subject to change without notice.

APARTMENT STYLE 4a

SPECIFICATIONS

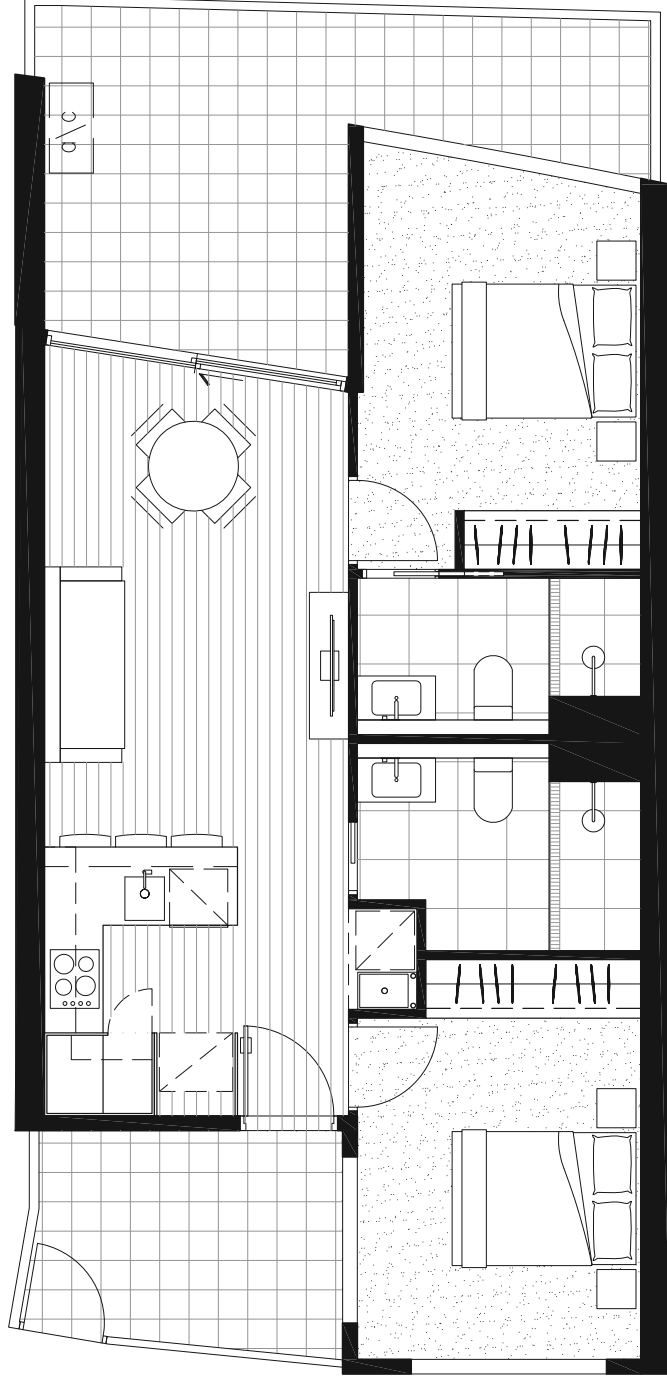


AREA (m²)

Internal 65.3

External 23.5

TOTAL 88.8



PANORAMA
BOX HILL

① Disclaimer: The information provided is illustrative only and may not be relied upon. In particular, the final area dimensions of any apartment sold will be determined by the contract of sale and may differ from the depicted. Whilst every effort is made to provide accurate and complete information, the developer does not warrant or represent that the information in this floor plan is free from errors or omissions or is suitable for your intended use. Subject to any terms implied by law which cannot be excluded, the developer accepts no responsibility for any loss, damage, cost or expense (whether direct or indirect) by you as a result of any error, omission or misrepresentation in information. Areas noted have derived from using the 'Property Council of Australia Method of Measurement'. All information is subject to change without notice.

APARTMENT STYLE 5

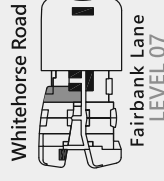
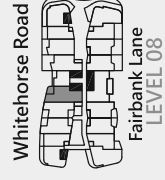
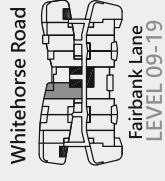
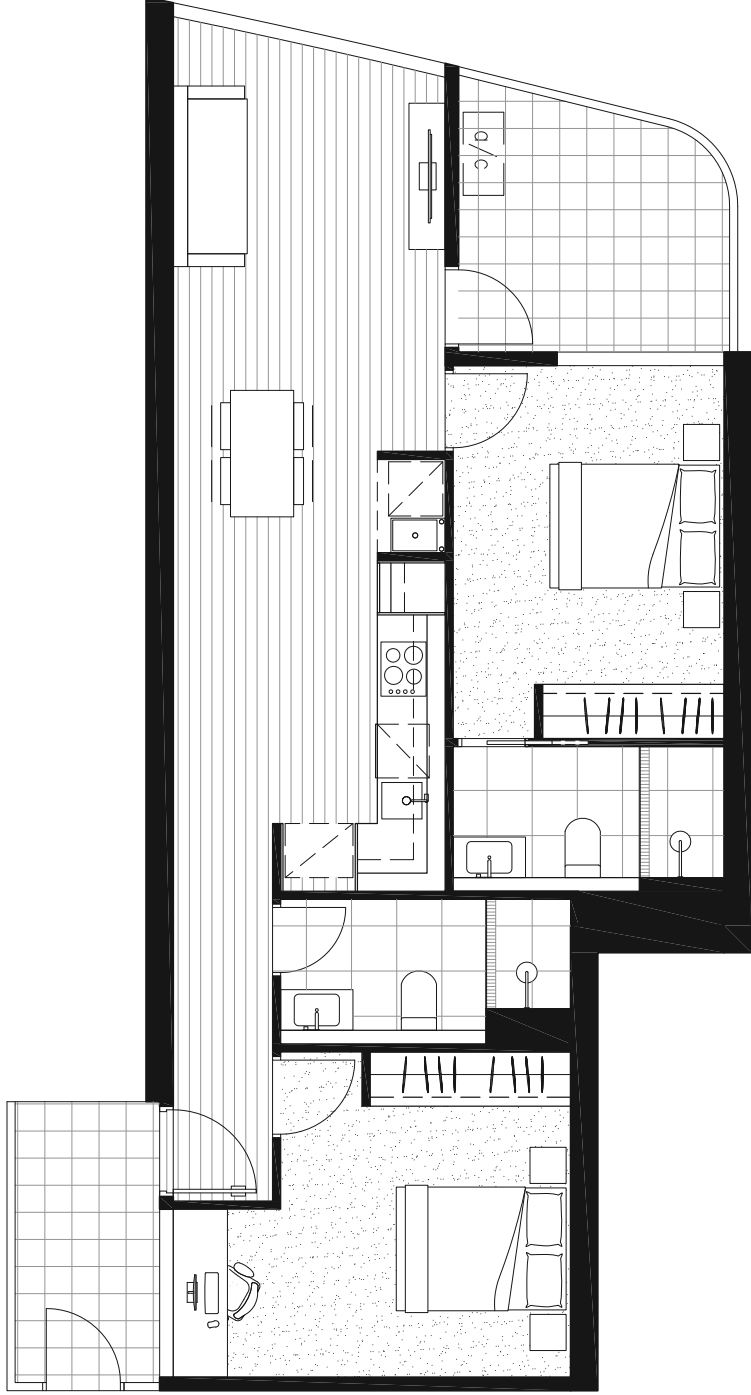
SPECIFICATIONS



AREA (m²)

Internal 76.7
External 13.8

TOTAL 90.5



PANORAMA
BOX HILL

1 Disclaimer: The information provided is illustrative only and may not be relied upon. In particular, the final area dimensions of any apartment sold will be determined by the contract of sale and may differ from the depicted. Whilst every effort is made to provide accurate and complete information, the developer does not warrant or represent that the information in this floor plan is free from errors or omissions or is suitable for your intended use. Subject to any terms implied by law which cannot be excluded, the developer accepts no responsibility for any loss, damage, cost or expense (whether direct or indirect) by you as a result of any error, omission or misrepresentation in information. Areas noted have derived from using the 'Property Council of Australia Method of Measurement'. All information is subject to change without notice.



APARTMENT STYLE 5a

SPECIFICATIONS



AREA (m²)

Internal 76.7
External 13.8

TOTAL 90.5



Whitehorse Road
Fairbank Lane
LEVEL 29



Whitehorse Road
Fairbank Lane
LEVEL 28



Whitehorse Road
Fairbank Lane
LEVEL 24-27



Whitehorse Road
Fairbank Lane
LEVEL 21-23

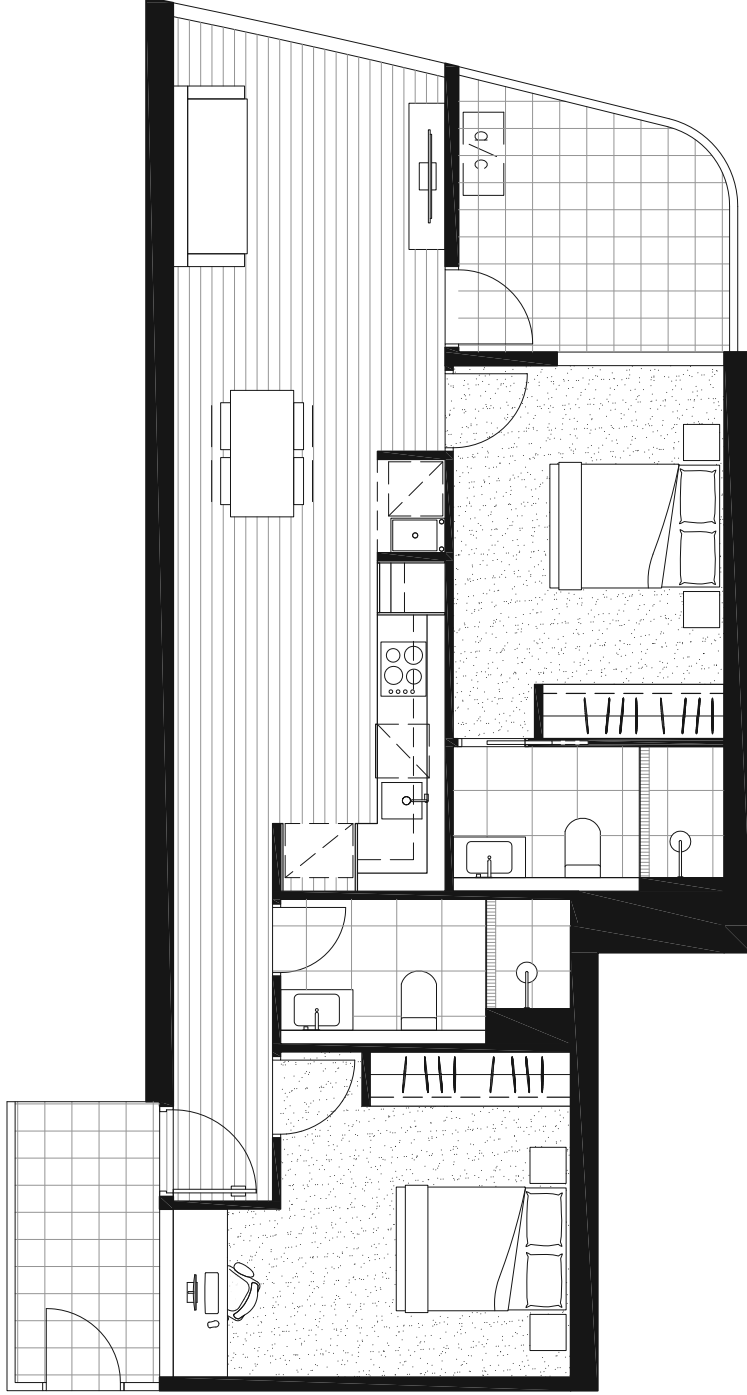


Whitehorse Road
Fairbank Lane
LEVEL 20



PANORAMA

BOX HILL



1 Disclaimer: The information provided is illustrative only and may not be relied upon. In particular, the final area dimensions of any apartment sold will be determined by the contract of sale and may differ from the depicted. Whilst every effort is made to provide accurate and complete information, the developer does not warrant or represent that the information in this floor plan is free from errors or omissions or is suitable for your intended use. Subject to any terms implied by law which cannot be excluded, the developer accepts no responsibility for any loss, damage, cost or expense (whether direct or indirect) by you as a result of any error, omission or misrepresentation in information. Areas noted have derived from using the 'Property Council of Australia Method of Measurement'. All information is subject to change without notice.

APARTMENT STYLE 5b

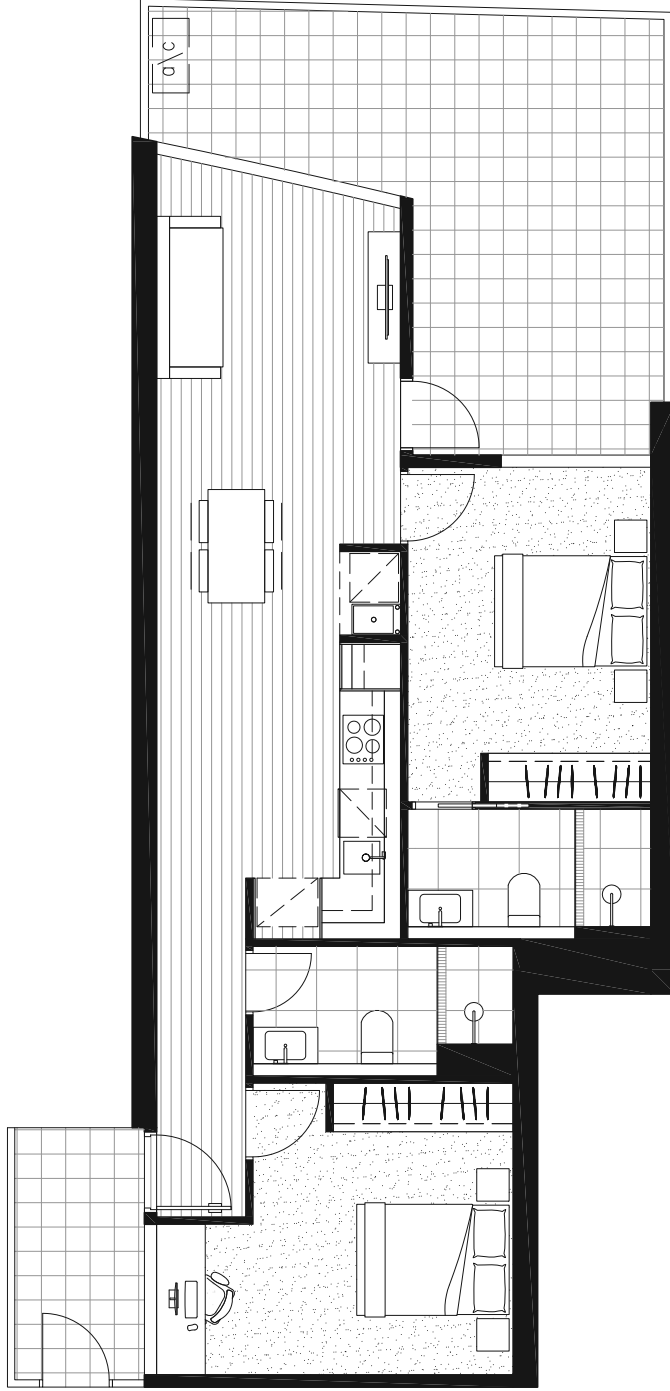
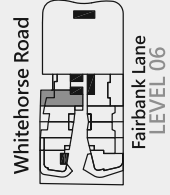
SPECIFICATIONS



AREA (m²)

Internal	76.7
External	29.6

TOTAL 106.3



1 Disclaimer: The information provided is illustrative only and may not be relied upon. In particular, the final area dimensions of any apartment sold will be determined by the contract of sale and may differ from the depicted. Whilst every effort is made to provide accurate and complete information, the developer does not warrant or represent that the information in this floor plan is free from errors or omissions or is suitable for your intended use. Subject to any terms implied by law which cannot be excluded, the developer accepts no responsibility for any loss, damage, cost or expense (whether direct or indirect) by you as a result of any error, omission or misrepresentation in information. Areas noted have derived from using the 'Property Council of Australia Method of Measurement'. All information is subject to change without notice.

APARTMENT STYLE 6

SPECIFICATIONS

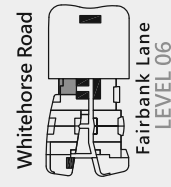
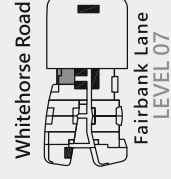
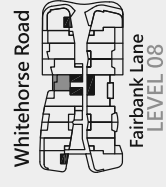


AREA (m²)

Internal 38.0

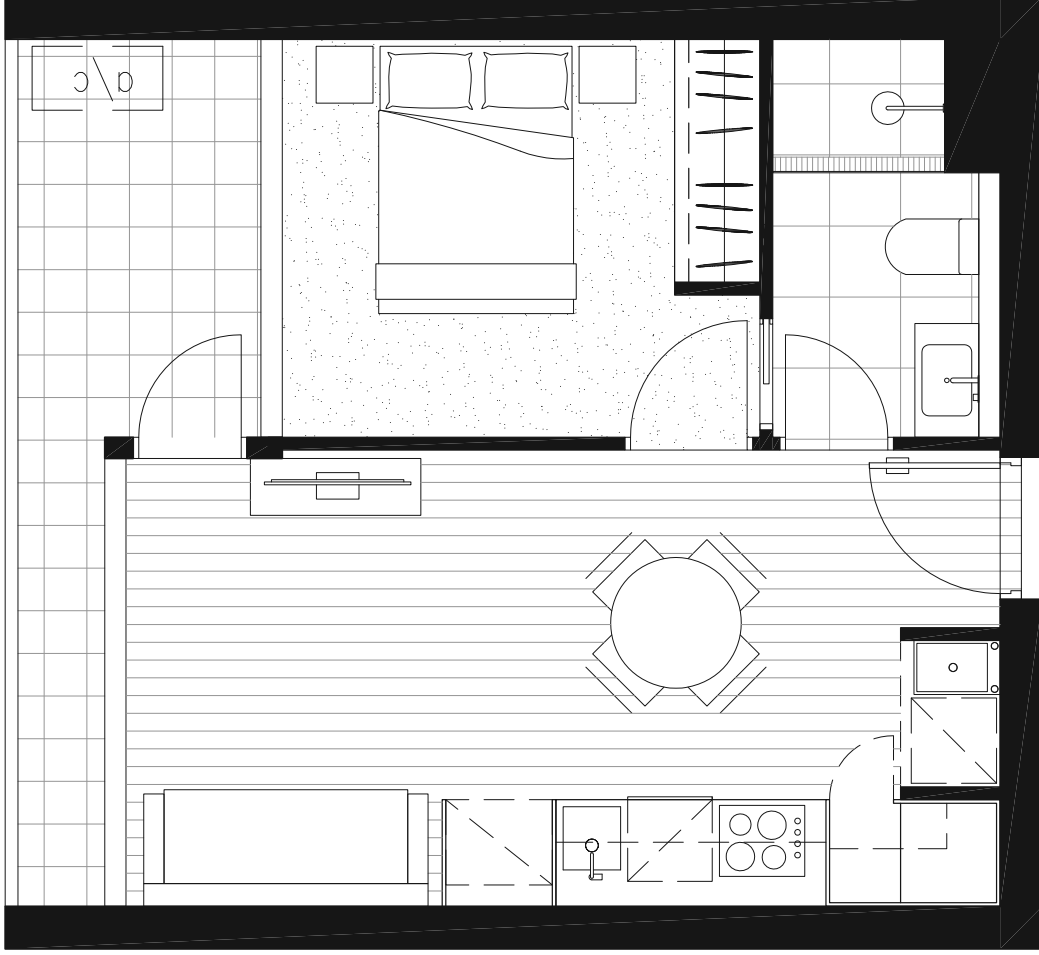
External 7.8

TOTAL 45.8



PANORAMA

BOX HILL



1 Disclaimer: The information provided is illustrative only and may not be relied upon. In particular, the final area dimensions of any apartment sold will be determined by the contract of sale and may differ from the depicted. Whilst every effort is made to provide accurate and complete information, the developer does not warrant or represent that the information in this floor plan is free from errors or omissions or is suitable for your intended use. Subject to any terms implied by law which cannot be excluded, the developer accepts no responsibility for any loss, damage, cost or expense (whether direct or indirect) by you as a result of any error, omission or misrepresentation in information. Areas noted have derived from using the 'Property Council of Australia Method of Measurement'. All information is subject to change without notice.

APARTMENT STYLE 7

SPECIFICATIONS



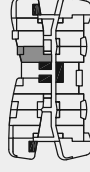
AREA (m²)

Internal 66.2

External 12.0

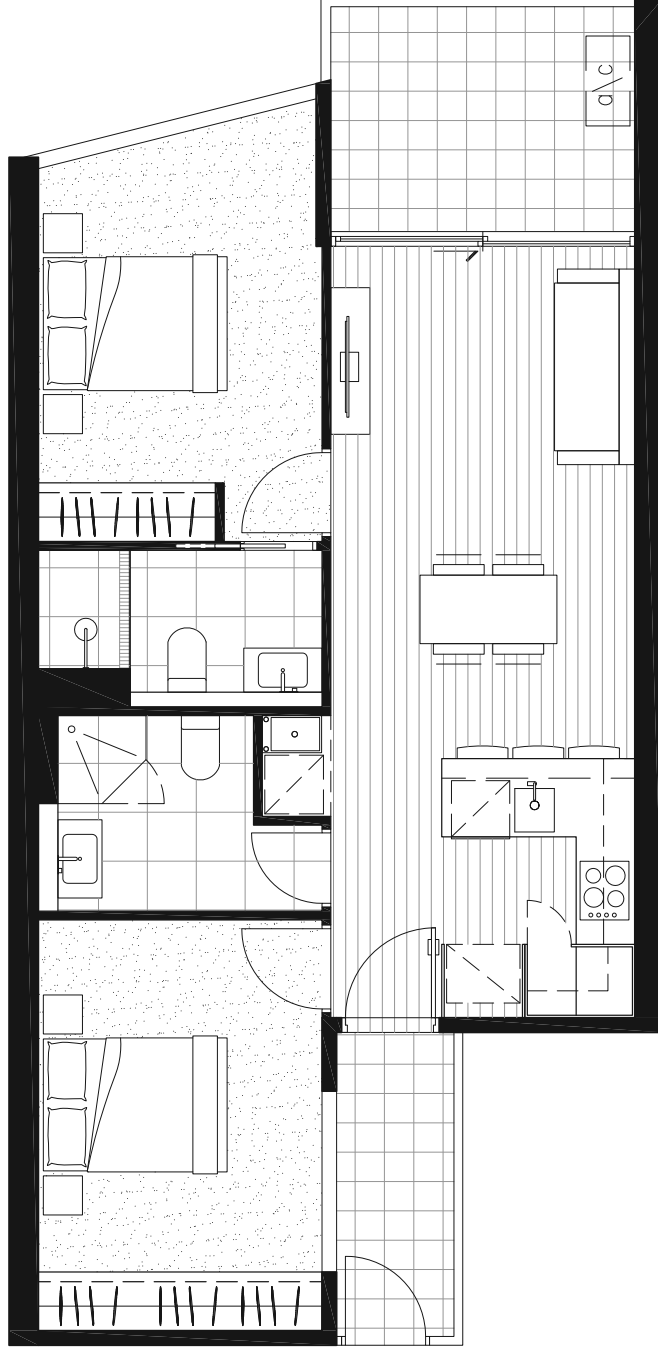
TOTAL 78.2

Whitehorse Road



Fairbank Lane
LEVEL 09-19

 **PANORAMA**
BOX HILL



1 Disclaimer: The information provided is illustrative only and may not be relied upon. In particular, the final area dimensions of any apartment sold will be determined by the contract of sale and may differ from the depicted. Whilst every effort is made to provide accurate and complete information, the developer does not warrant or represent that the information in this floor plan is free from errors or omissions or is suitable for your intended use. Subject to any terms implied by law which cannot be excluded, the developer accepts no responsibility for any loss, damage, cost or expense (whether direct or indirect) by you as a result of any error, omission or misrepresentation in information. Areas noted have derived from using the 'Property Council of Australia Method of Measurement'. All information is subject to change without notice.

APARTMENT STYLE 7a

SPECIFICATIONS

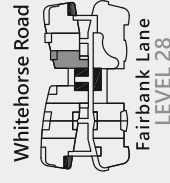
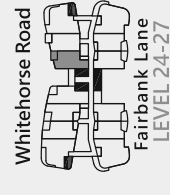
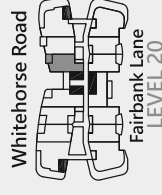
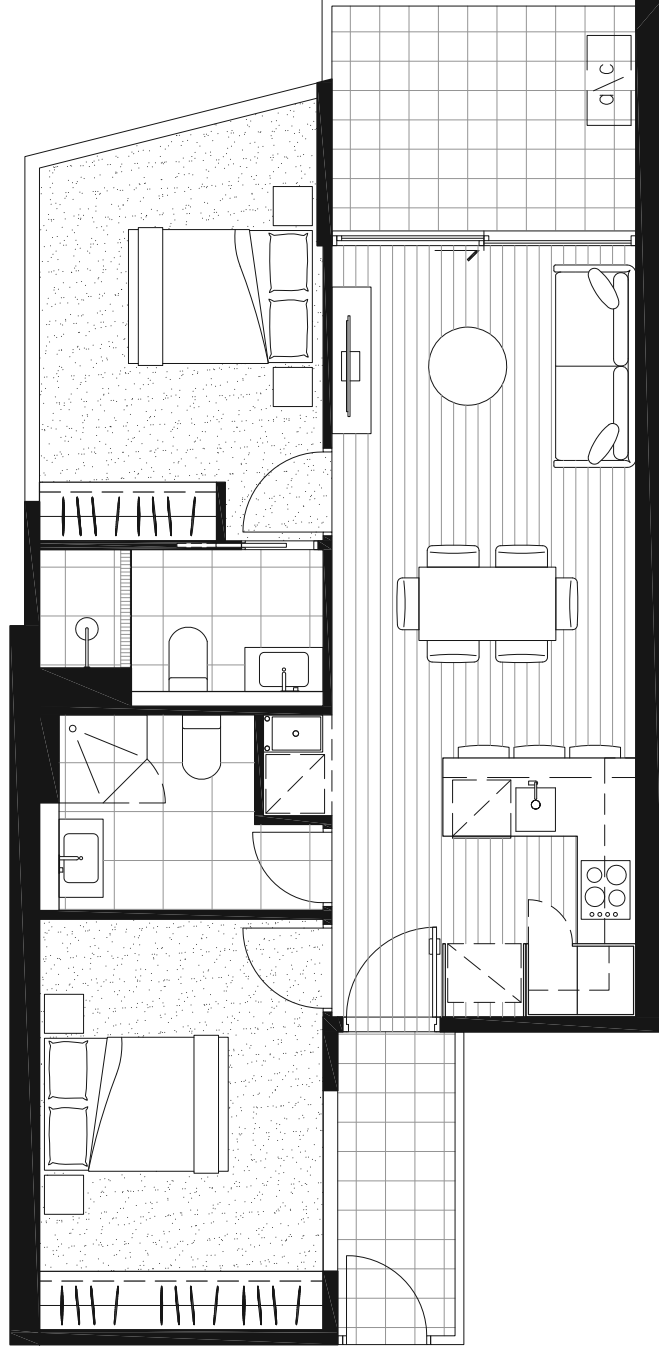


AREA (m²)

Internal 66.2

External 12.0

TOTAL 78.2



PANORAMA

BOX HILL

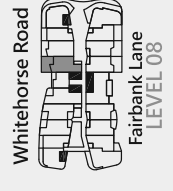
1 Disclaimer: The information provided is illustrative only and may not be relied upon. In particular, the final area dimensions of any apartment sold will be determined by the contract of sale and may differ from the depicted. Whilst every effort is made to provide accurate and complete information, the developer does not warrant or represent that the information in this floor plan is free from errors or omissions or is suitable for your intended use. Subject to any terms implied by law which cannot be excluded, the developer accepts no responsibility for any loss, damage, cost or expense (whether direct or indirect) by you as a result of any error, omission or misrepresentation in information. Areas noted have derived from using the 'Property Council of Australia Method of Measurement'. All information is subject to change without notice.

APARTMENT STYLE 7b

SPECIFICATIONS



AREA (m ²)	
Internal	66.2
External	32.5
TOTAL	98.7



PANORAMA
BOX HILL

1 Disclaimer: The information provided is illustrative only and may not be relied upon. In particular, the final area dimensions of any apartment sold will be determined by the contract of sale and may differ from the depicted. Whilst every effort is made to provide accurate and complete information, the developer does not warrant or represent that the information in this floor plan is free from errors or omissions or is suitable for your intended use. Subject to any terms implied by law which cannot be excluded, the developer accepts no responsibility for any loss, damage, cost or expense (whether direct or indirect) by you as a result of any error, omission or misrepresentation in information. Areas noted have derived from using the 'Property Council of Australia Method of Measurement'. All information is subject to change without notice.

APARTMENT STYLE 8

SPECIFICATIONS

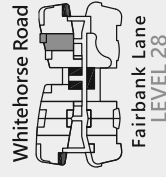
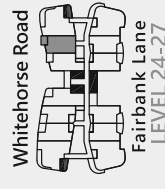
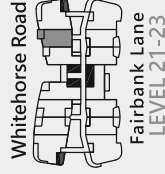
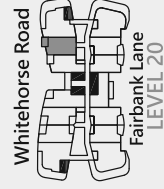
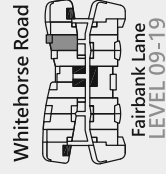
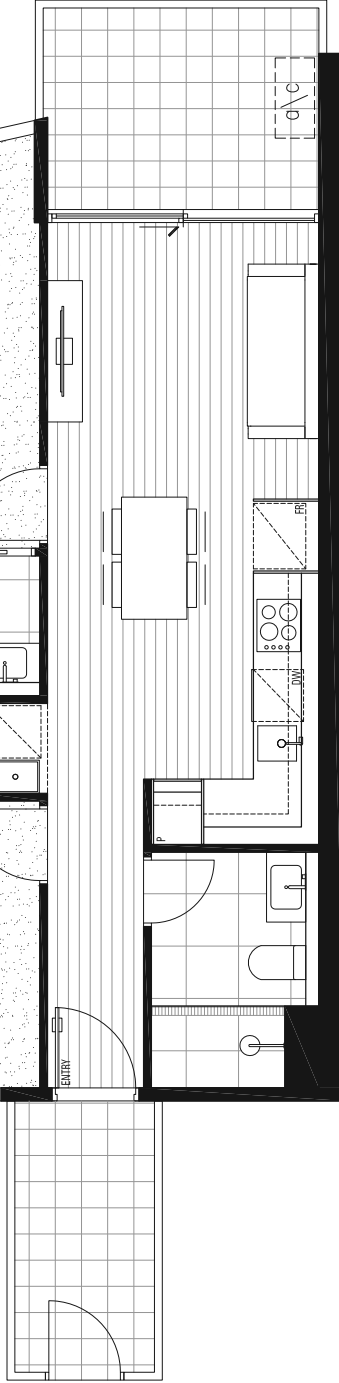


AREA (m²)

Internal 67.5

External 13.6

TOTAL 81.1



PANORAMA

BOX HILL

①

Disclaimer: The information provided is illustrative only and may not be relied upon. In particular, the final area dimensions of any apartment sold will be determined by the contract of sale and may differ from the depicted. Whilst every effort is made to provide accurate and complete information, the developer does not warrant or represent that the information in this floor plan is free from errors or omissions or is suitable for your intended use. Subject to any terms implied by law which cannot be excluded, the developer accepts no responsibility for any loss, damage, cost or expense (whether direct or indirect) by you as a result of any error, omission or misrepresentation in information. Areas noted have derived from using the 'Property Council of Australia Method of Measurement'. All information is subject to change without notice.

APARTMENT STYLE 8a

SPECIFICATIONS

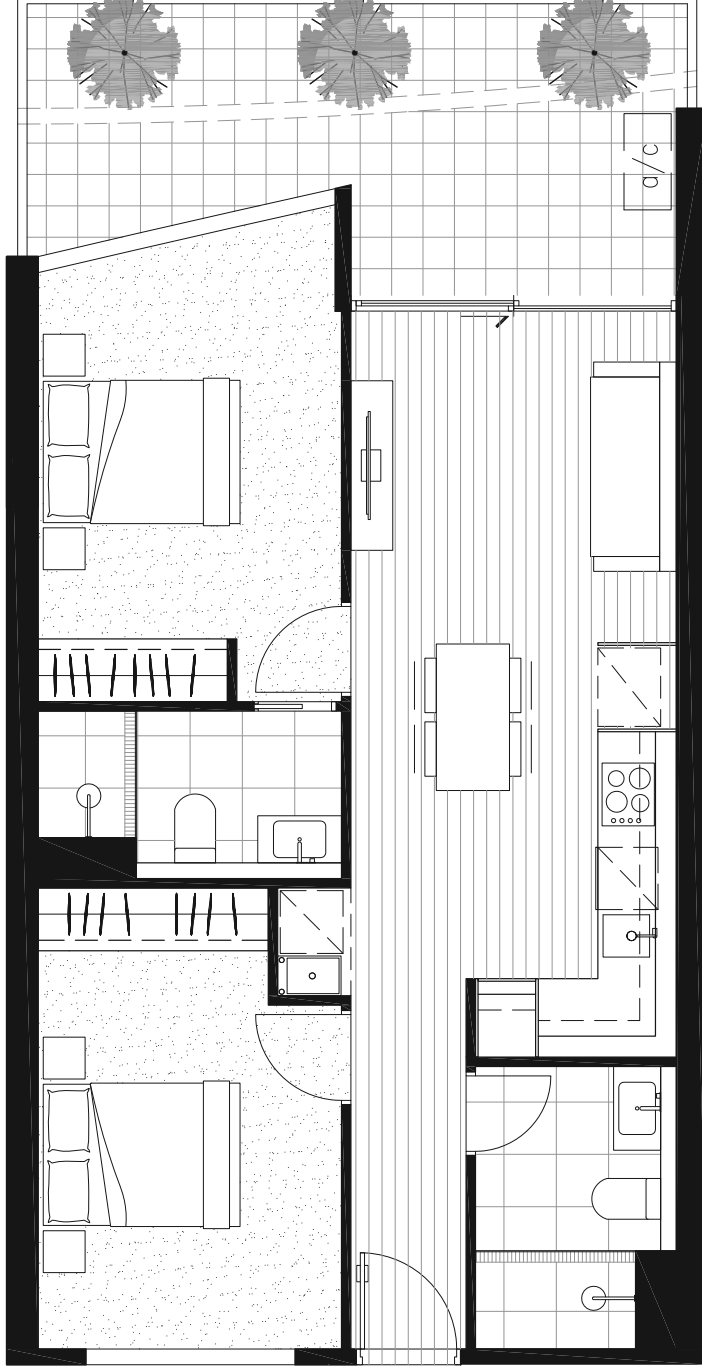
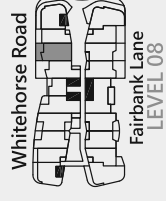


AREA (m²)

Internal 67.5

External 16.3

TOTAL 83.8



1 Disclaimer: The information provided is illustrative only and may not be relied upon. In particular, the final area dimensions of any apartment sold will be determined by the contract of sale and may differ from the depicted. Whilst every effort is made to provide accurate and complete information, the developer does not warrant or represent that the information in this floor plan is free from errors or omissions or is suitable for your intended use. Subject to any terms implied by law which cannot be excluded, the developer accepts no responsibility for any loss, damage, cost or expense (whether direct or indirect) by you as a result of any error, omission or misrepresentation in information. Areas noted have derived from using the 'Property Council of Australia Method of Measurement'. All information is subject to change without notice.

APARTMENT STYLE 9

SPECIFICATIONS



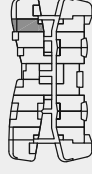
AREA (m²)

Internal 50.7

External 11

TOTAL 61.7

Whitehorse Road

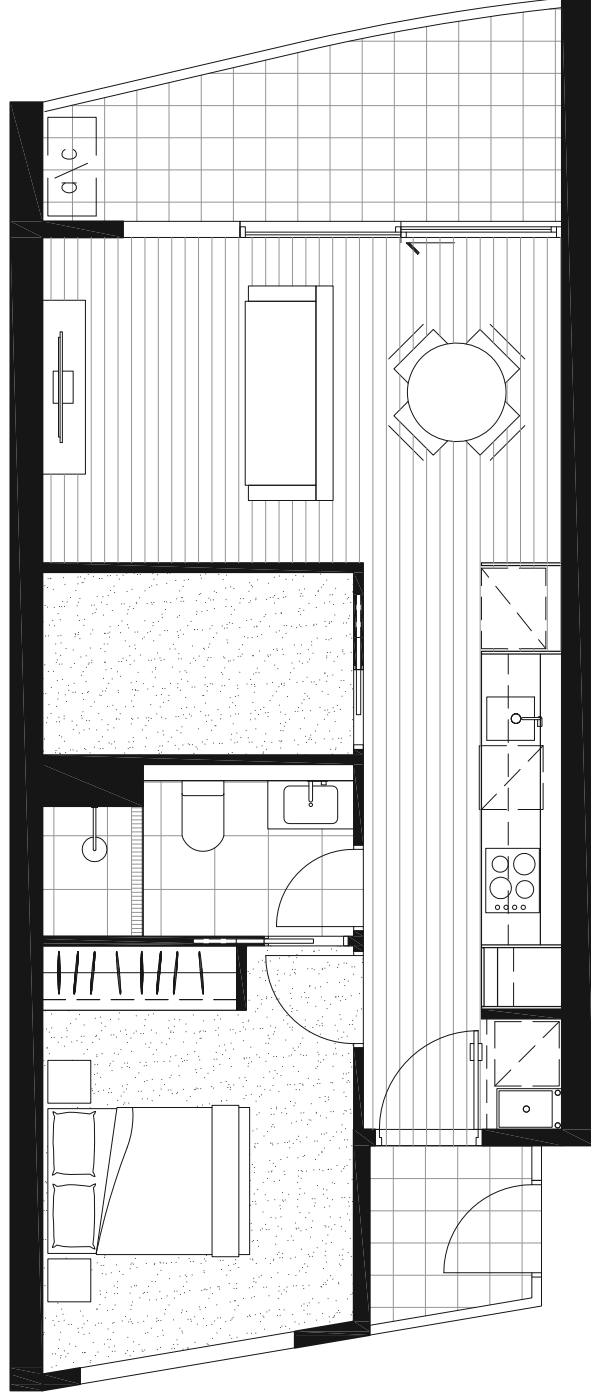


Fairbank Lane
LEVEL 09-19



PANORAMA

BOX HILL



① Disclaimer: The information provided is illustrative only and may not be relied upon. In particular, the final area dimensions of any apartment sold will be determined by the contract of sale and may differ from the depicted. Whilst every effort is made to provide accurate and complete information, the developer does not warrant or represent that the information in this floor plan is 'free from errors or omissions or is suitable for your intended use. Subject to any terms implied by law which cannot be excluded, the developer accepts no responsibility for any loss, damage, cost or expense (whether direct or indirect) by you as a result of any error, omission or misrepresentation in information. Areas noted have derived from using the 'Property Council of Australia Method of Measurement'. All information is subject to change without notice.

APARTMENT STYLE 9a

SPECIFICATIONS



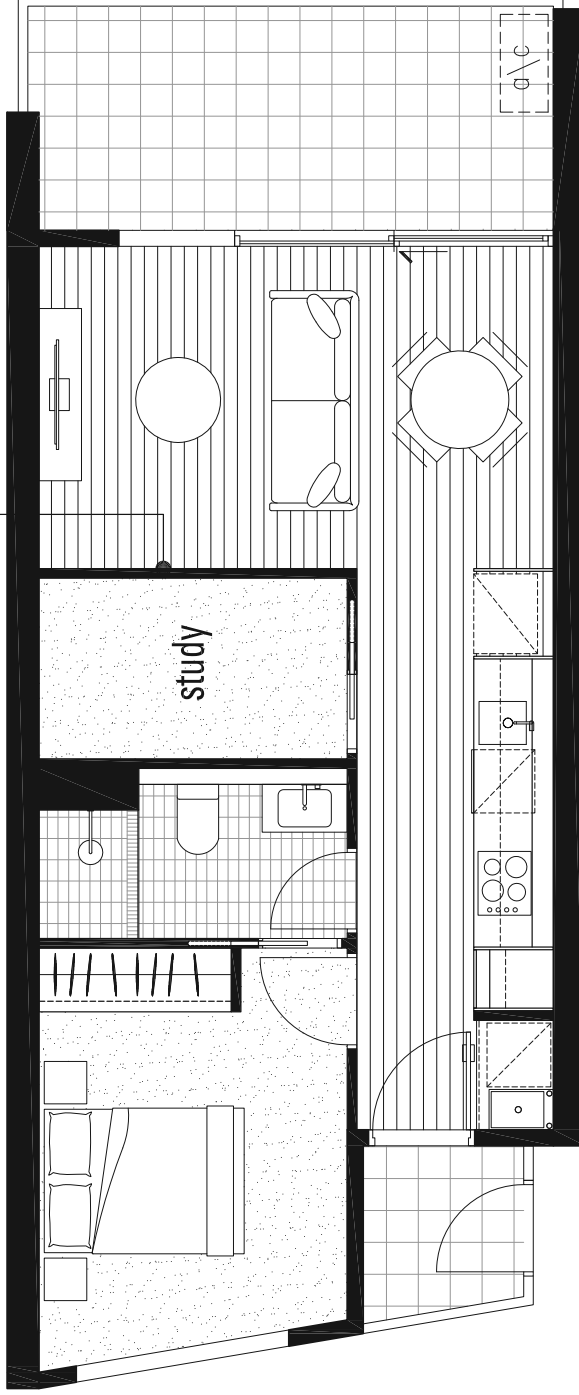
AREA (m²)

Internal 50.7

External 13.9

TOTAL 64.6

high level window



Whitehorse Road
Fairbank Lane
LEVEL 08

PANORAMA
BOX HILL

1 Disclaimer: The information provided is illustrative only and may not be relied upon. In particular, the final area dimensions of any apartment sold will be determined by the contract of sale and may differ from the depicted. Whilst every effort is made to provide accurate and complete information, the developer does not warrant or represent that the information in this floor plan is free from errors or omissions or is suitable for your intended use. Subject to any terms implied by law which cannot be excluded, the developer accepts no responsibility for any loss, damage, cost or expense (whether direct or indirect) by you as a result of any error, omission or misrepresentation in information. Areas noted have derived from using the 'Property Council of Australia Method of Measurement'. All information is subject to change without notice.



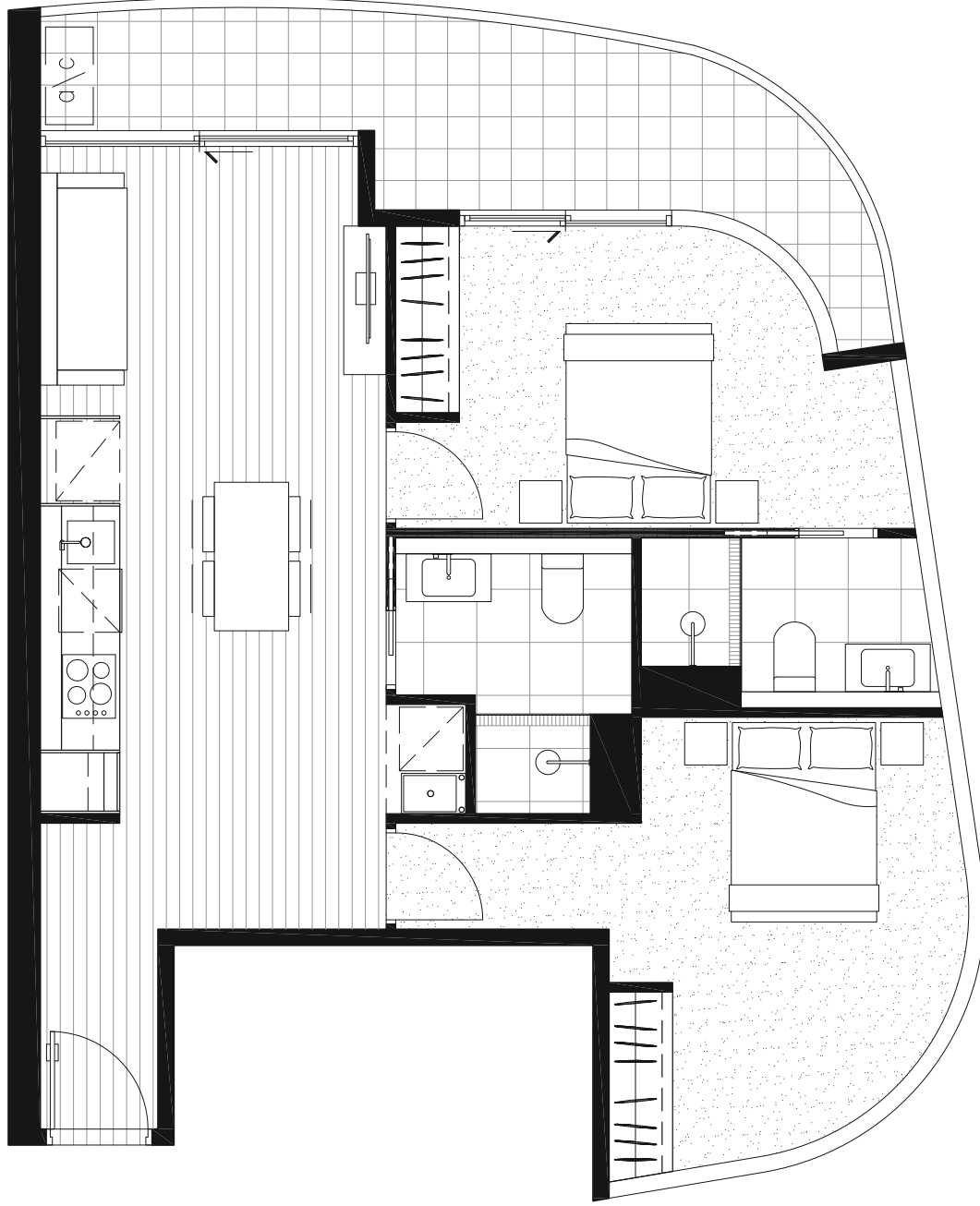
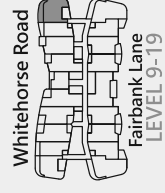
APARTMENT STYLE 10

SPECIFICATIONS



AREA (m²)

Internal	70.5
External	12.3
TOTAL	82.8



①

Disclaimer: The information provided is illustrative only and may not be relied upon. In particular, the final area dimensions of any apartment sold will be determined by the contract of sale and may differ from the depicted. Whilst every effort is made to provide accurate and complete information, the developer does not warrant or represent that the information in this floor plan is free from errors or omissions or is suitable for your intended use. Subject to any terms implied by law which cannot be excluded, the developer accepts no responsibility for any loss, damage, cost or expense (whether direct or indirect) by you as a result of any error, omission or misrepresentation in information. Areas noted have derived from using the 'Property Council of Australia Method of Measurement'. All information is subject to change without notice.

APARTMENT STYLE 10a

SPECIFICATIONS



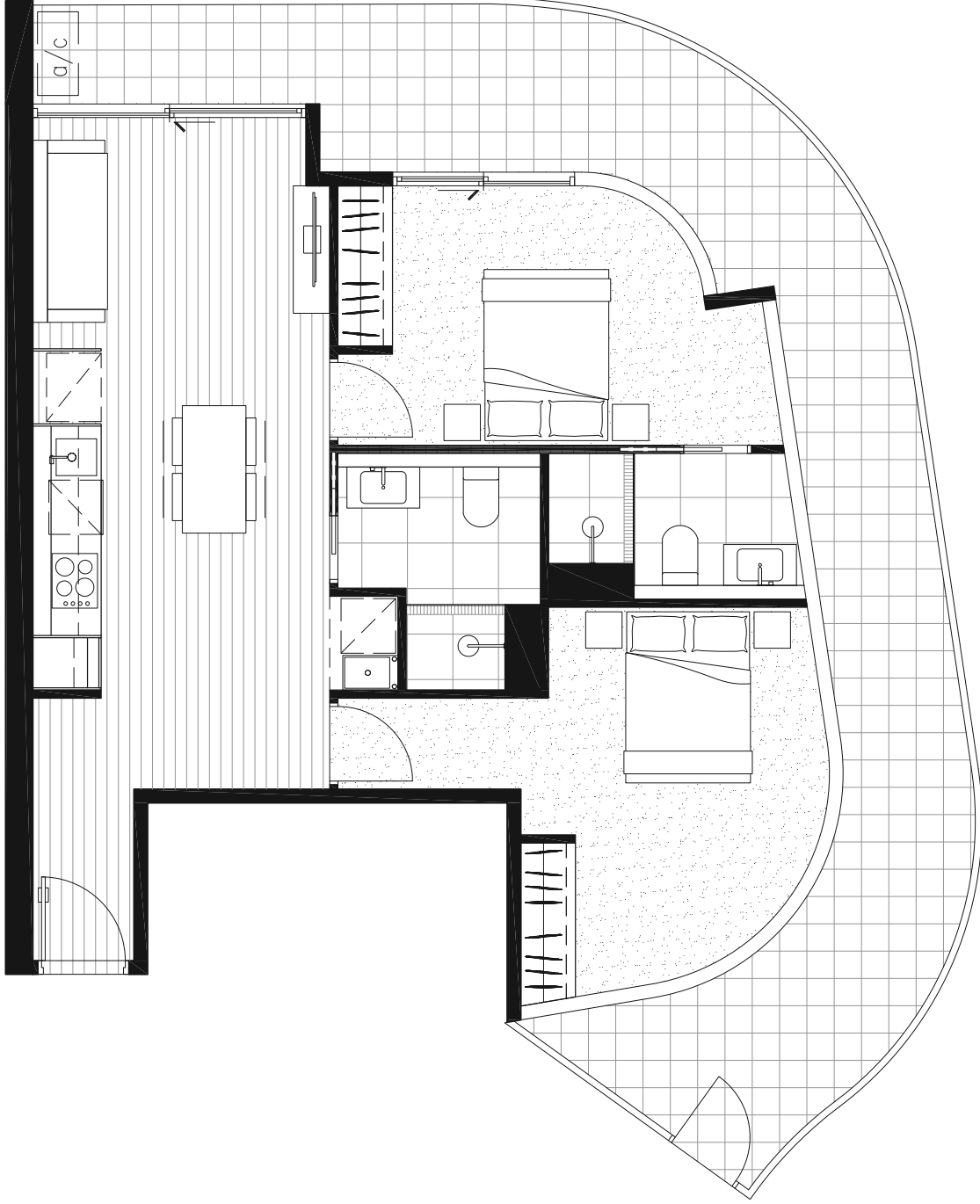
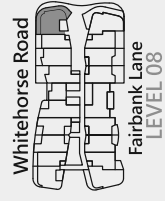
2

2

AREA (m²)

Internal 70.5
External 33.5

TOTAL 104.0



1 Disclaimer: The information provided is illustrative only and may not be relied upon. In particular, the final area dimensions of any apartment sold will be determined by the contract of sale and may differ from the depicted. Whilst every effort is made to provide accurate and complete information, the developer does not warrant or represent that the information in this floor plan is free from errors or omissions or is suitable for your intended use. Subject to any terms implied by law which cannot be excluded, the developer accepts no responsibility for any loss, damage, cost or expense (whether direct or indirect) by you as a result of any error, omission or misrepresentation in information. Areas noted have derived from using the 'Property Council of Australia Method of Measurement'. All information is subject to change without notice.

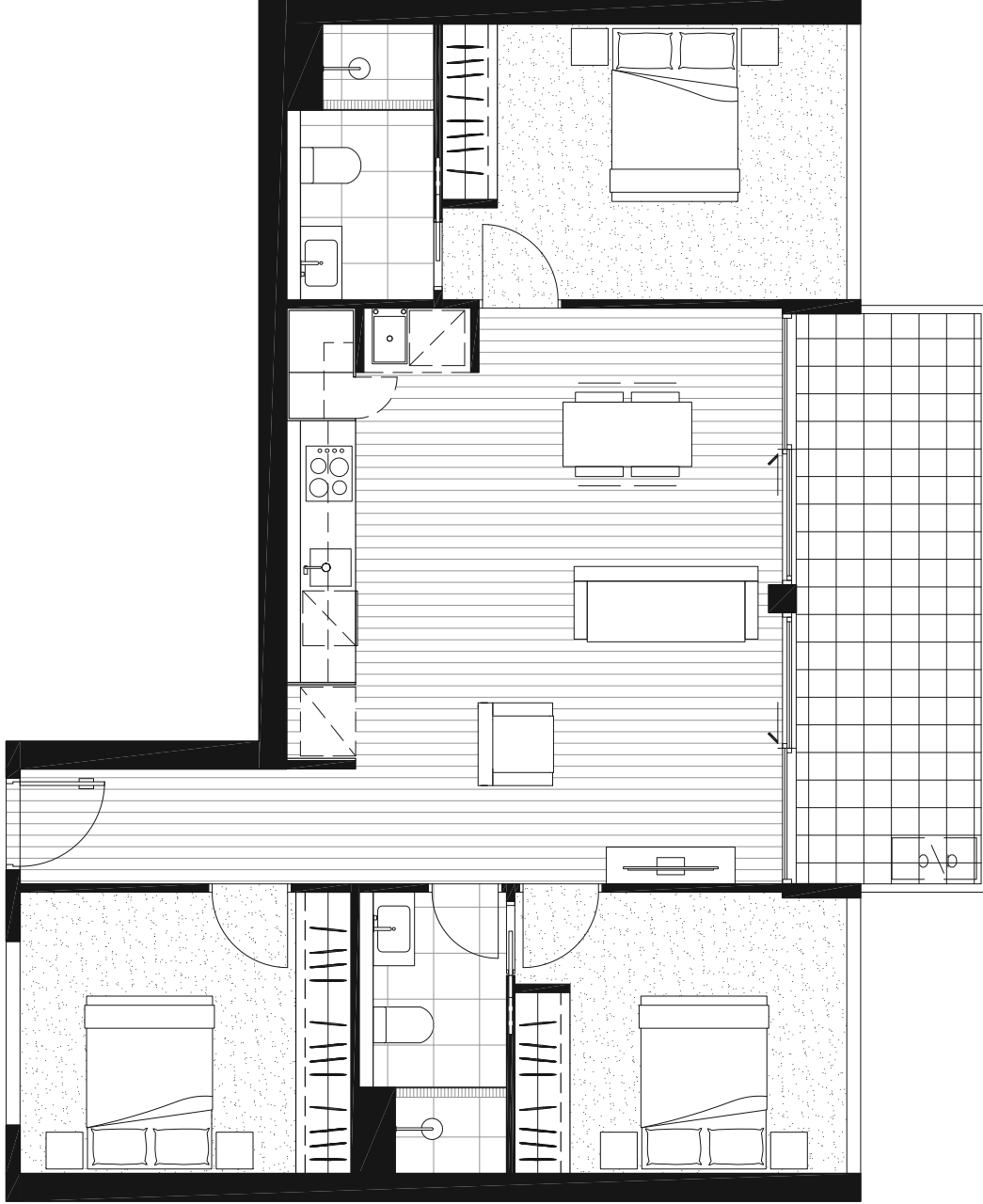
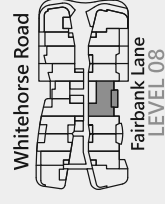
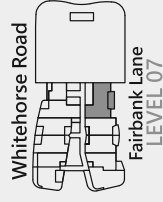
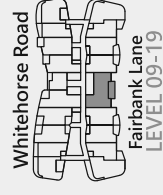
APARTMENT STYLE 11

SPECIFICATIONS



AREA (m²)

Internal	91.0
External	13.2
TOTAL	104.2



①

Disclaimer: The information provided is illustrative only and may not be relied upon. In particular, the final area dimensions of any apartment sold will be determined by the contract of sale and may differ from the depicted. Whilst every effort is made to provide accurate and complete information, the developer does not warrant or represent that the information in this floor plan is free from errors or omissions or is suitable for your intended use. Subject to any terms implied by law which cannot be excluded, the developer accepts no responsibility for any loss, damage, cost or expense (whether direct or indirect) by you as a result of any error, omission or misrepresentation in information. Areas noted have derived from using the 'Property Council of Australia Method of Measurement'. All information is subject to change without notice.

APARTMENT STYLE 11a

SPECIFICATIONS

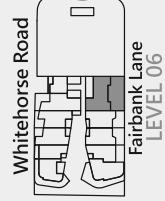


AREA (m²)

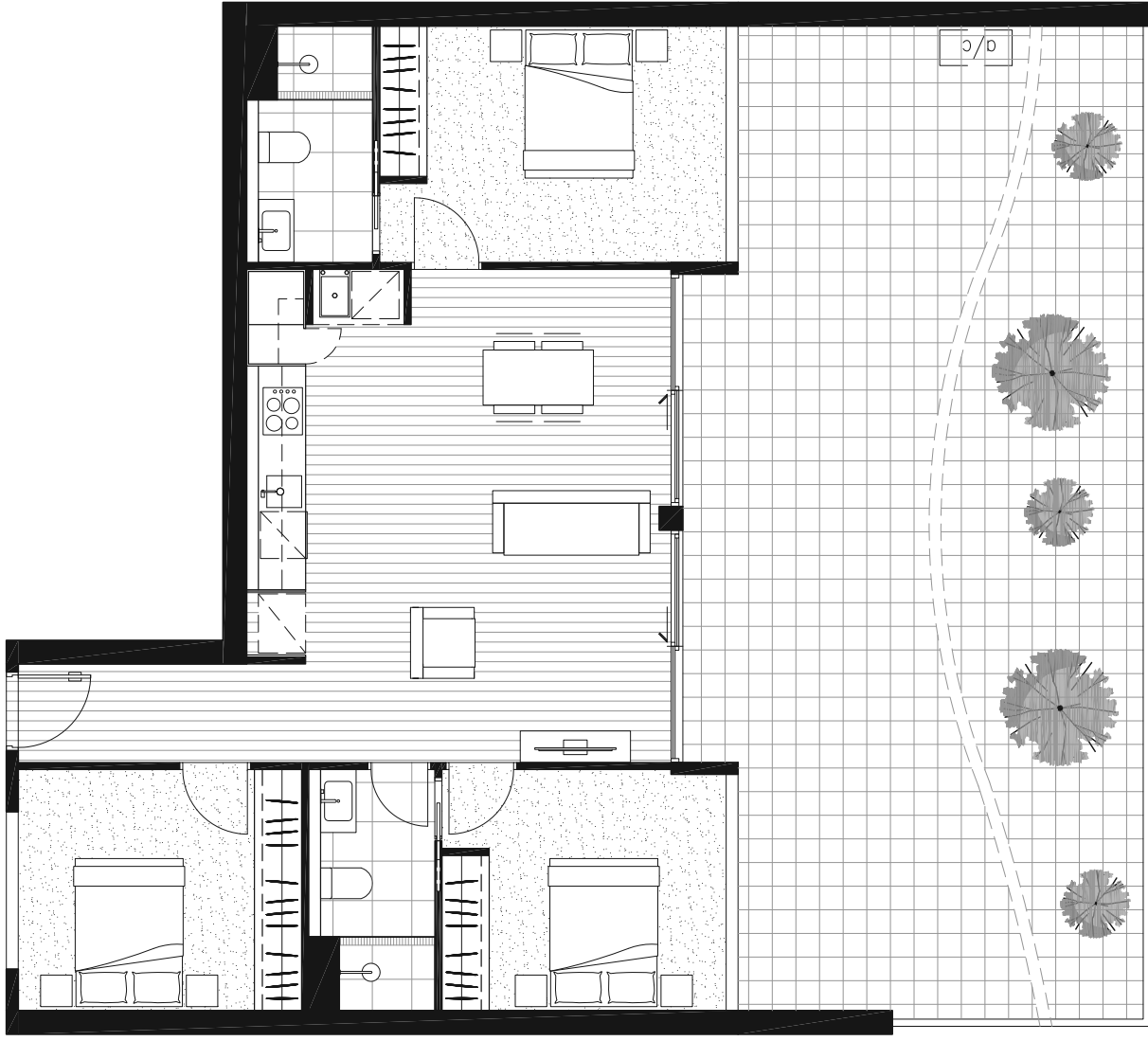
Internal 91.0

External 70.5

TOTAL 161.5



PANORAMA
BOX HILL



1 Disclaimer: The information provided is illustrative only and may not be relied upon. In particular, the final area dimensions of any apartment sold will be determined by the contract of sale and may differ from the depicted. Whilst every effort is made to provide accurate and complete information, the developer does not warrant or represent that the information in this floor plan is free from errors or omissions or is suitable for your intended use. Subject to any terms implied by law which cannot be excluded, the developer accepts no responsibility for any loss, damage, cost or expense (whether direct or indirect) by you as a result of any error, omission or misrepresentation in information. Areas noted have derived from using the 'Property Council of Australia Method of Measurement'. All information is subject to change without notice.



APARTMENT STYLE 12

SPECIFICATIONS

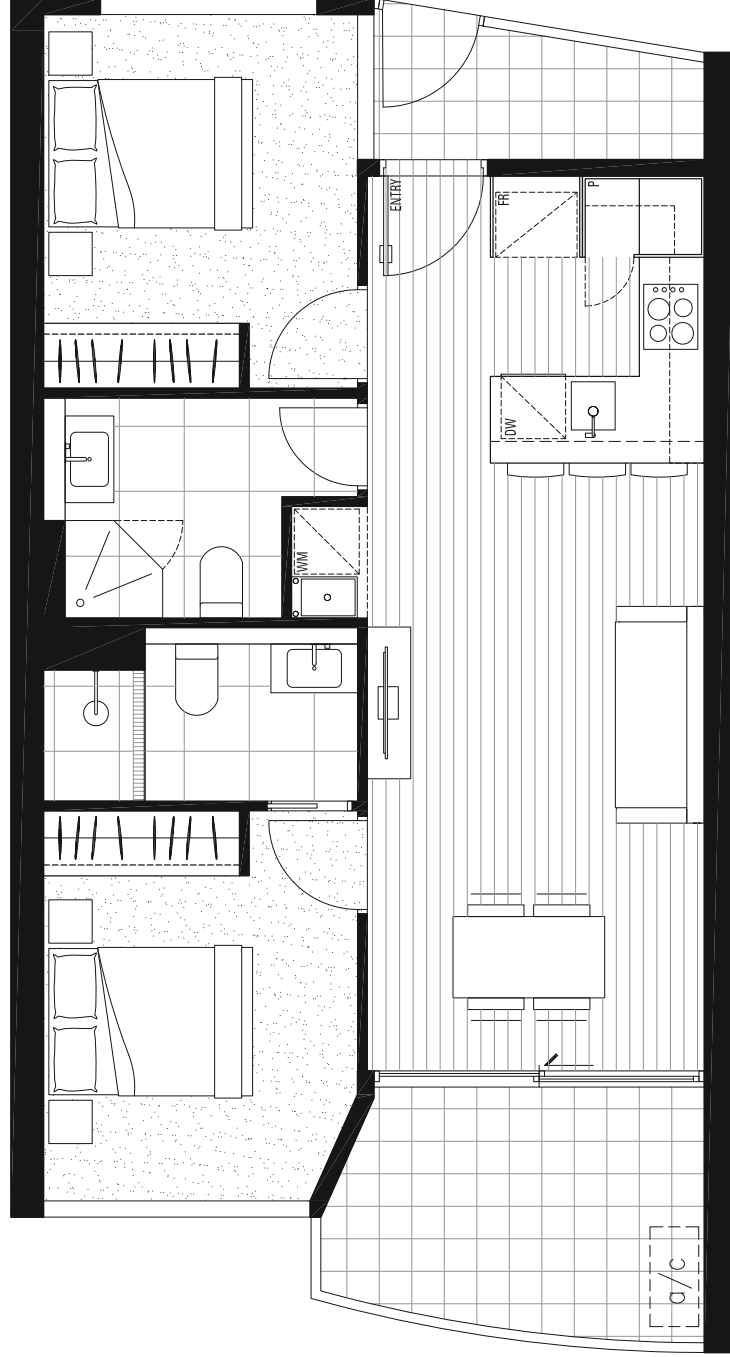


AREA (m²)

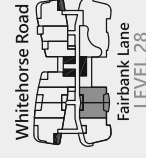
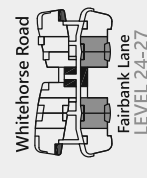
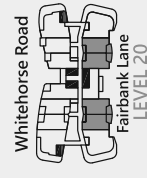
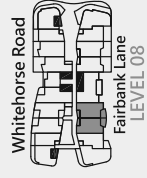
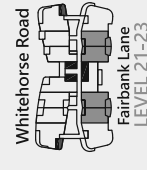
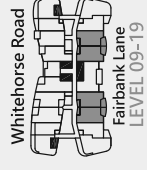
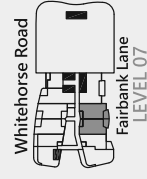
Internal 63.1

External 12.1

TOTAL 75.2



1 Disclaimer: The information provided is illustrative only and may not be relied upon. In particular, the final area dimensions of any apartment sold will be determined by the contract of sale and may differ from the depicted. Whilst every effort is made to provide accurate and complete information, the developer does not warrant or represent that the information in this floor plan is free from errors or omissions or is suitable for your intended use. Subject to any terms implied by law which cannot be excluded, the developer accepts no responsibility for any loss, damage, cost or expense (whether direct or indirect) by you as a result of any error, omission or misrepresentation in information. Areas noted have derived from using the 'Property Council of Australia Method of Measurement'. All information is subject to change without notice.



PANORAMA

BOX HILL

APARTMENT STYLE 12a

SPECIFICATIONS

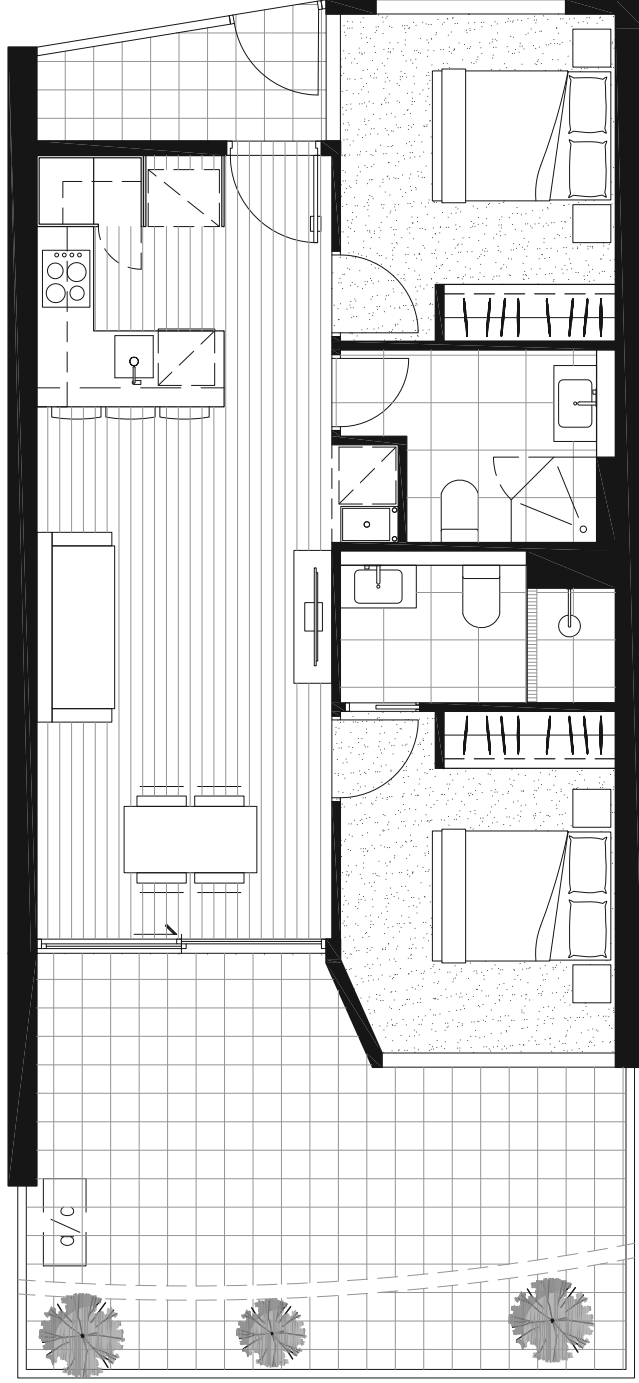


AREA (m²)

Internal 63.1

External 29.0

TOTAL 92.1



1 Disclaimer: The information provided is illustrative only and may not be relied upon. In particular, the final area dimensions of any apartment sold will be determined by the contract of sale and may differ from the depicted. Whilst every effort is made to provide accurate and complete information, the developer does not warrant or represent that the information in this floor plan is free from errors or omissions or is suitable for your intended use. Subject to any terms implied by law which cannot be excluded, the developer accepts no responsibility for any loss, damage, cost or expense (whether direct or indirect) by you as a result of any error, omission or misrepresentation in information. Areas noted have derived from using the 'Property Council of Australia Method of Measurement'. All information is subject to change without notice.

APARTMENT STYLE 12b

SPECIFICATIONS

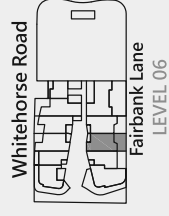
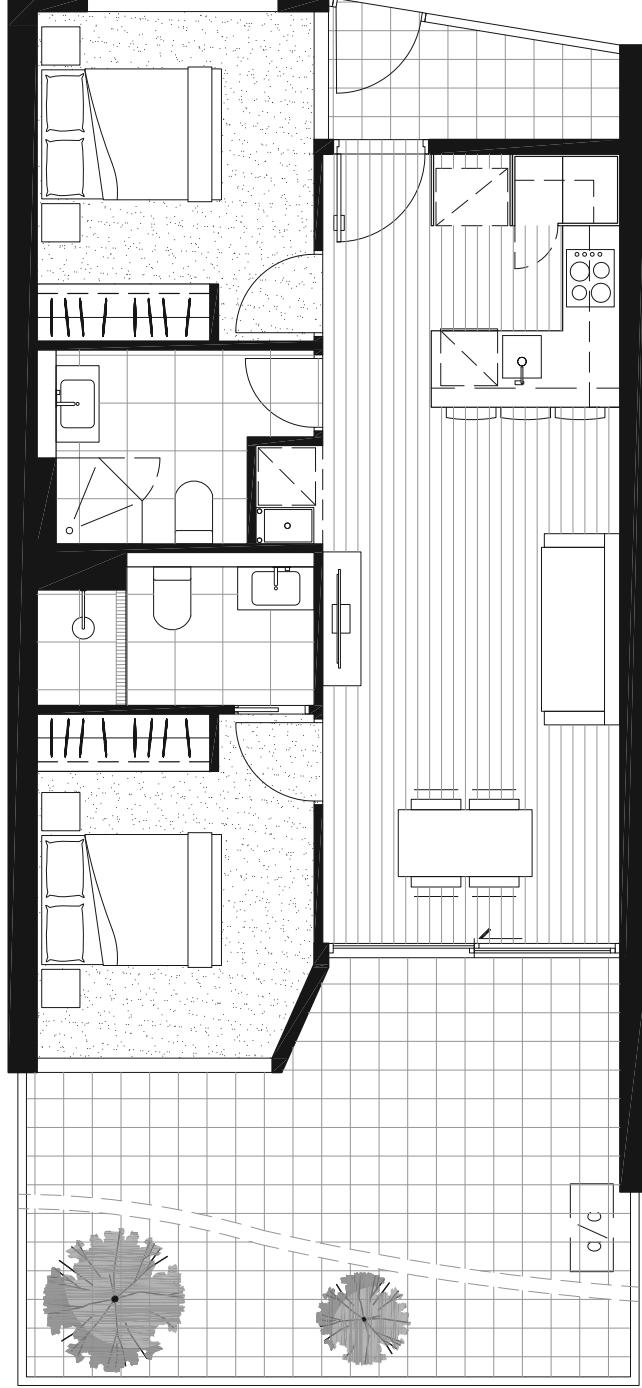


AREA (m²)

Internal 63.1

External 29.0

TOTAL 92.1



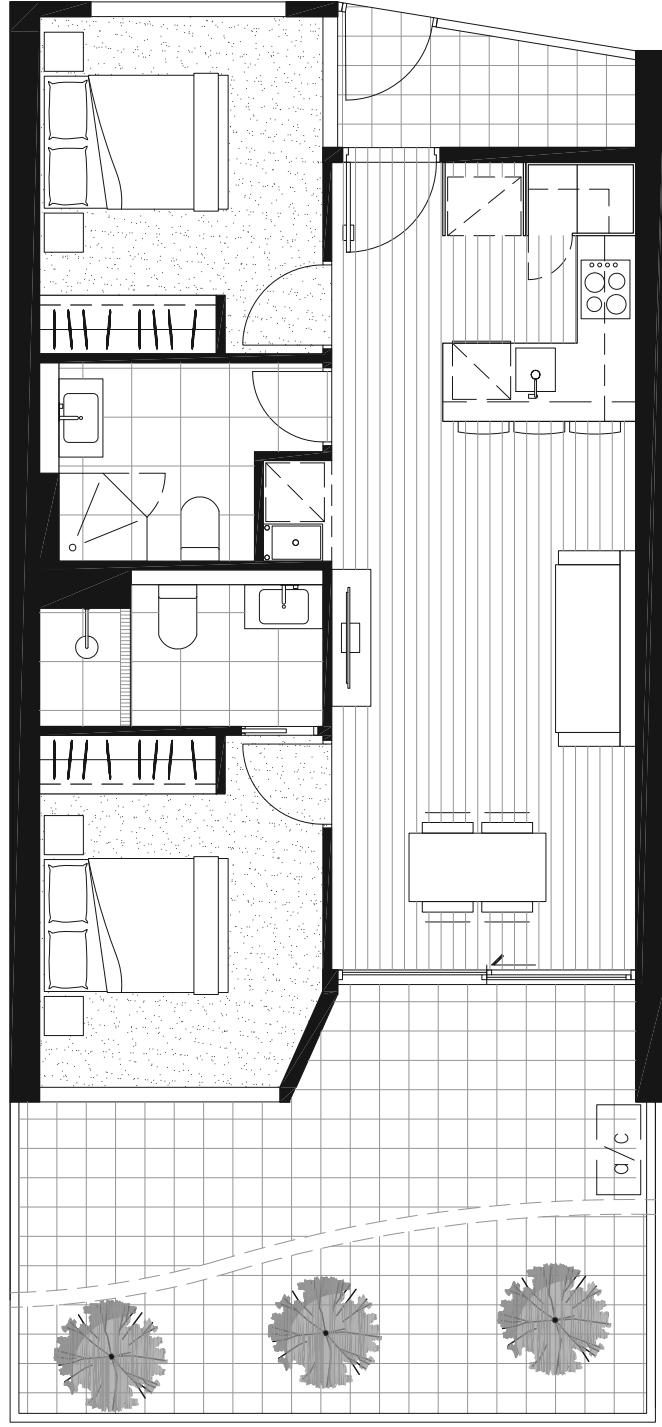
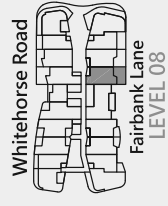
① Disclaimer: The information provided is illustrative only and may not be relied upon. In particular, the final area dimensions of any apartment sold will be determined by the contract of sale and may differ from the depicted. Whilst every effort is made to provide accurate and complete information, the developer does not warrant or represent that the information in this floor plan is free from errors or omissions or is suitable for your intended use. Subject to any terms implied by law which cannot be excluded, the developer accepts no responsibility for any loss, damage, cost or expense (whether direct or indirect) by you as a result of any error, omission or misrepresentation in information. Areas noted have derived from using the 'Property Council of Australia Method of Measurement'. All information is subject to change without notice.

APARTMENT STYLE 12c

SPECIFICATIONS



AREA (m ²)	
Internal	63.1
External	29.5
TOTAL	92.6



①

Disclaimer: The information provided is illustrative only and may not be relied upon. In particular, the final area dimensions of any apartment sold will be determined by the contract of sale and may differ from the depicted. Whilst every effort is made to provide accurate and complete information, the developer does not warrant or represent that the information in this floor plan is free from errors or omissions or is suitable for your intended use. Subject to any terms implied by law which cannot be excluded, the developer accepts no responsibility for any loss, damage, cost or expense (whether direct or indirect) by you as a result of any error, omission or misrepresentation in information. Areas noted have derived from using the 'Property Council of Australia Method of Measurement'. All information is subject to change without notice.

APARTMENT STYLE 12d

SPECIFICATIONS

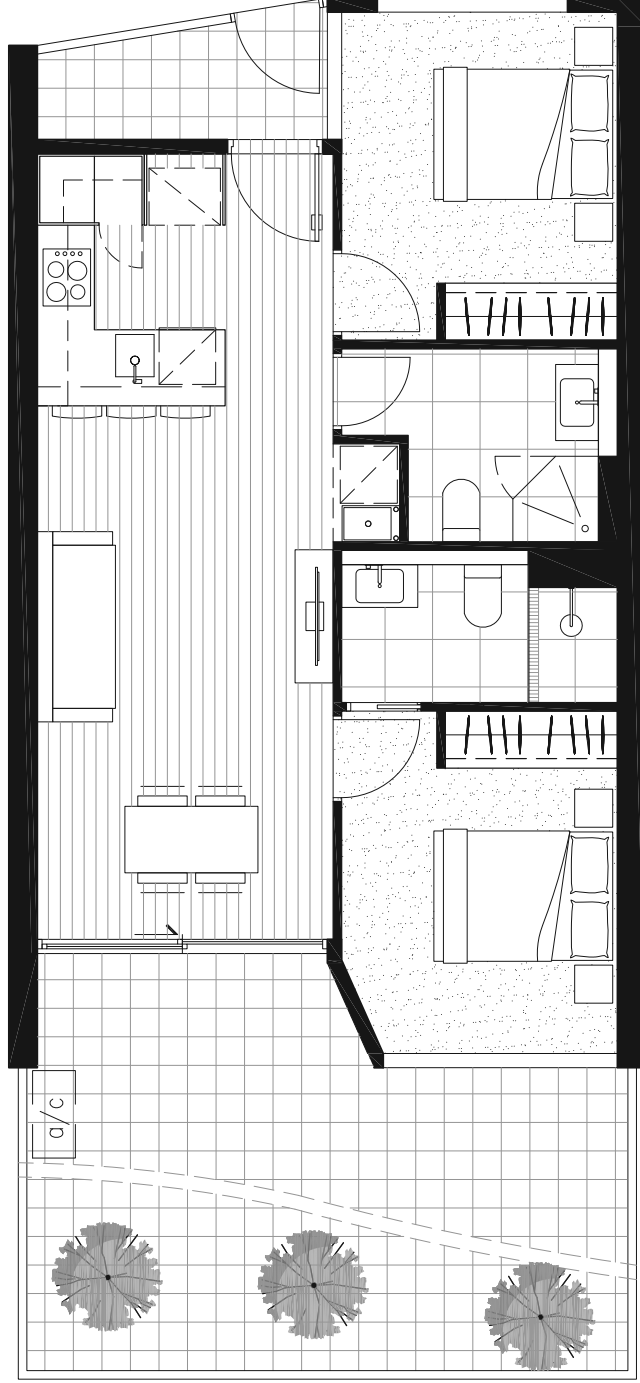
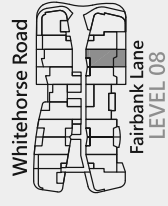


AREA (m²)

Internal 63.1

External 29.0

TOTAL 92.1



1
 Disclaimer: The information provided is illustrative only and may not be relied upon. In particular, the final area dimensions of any apartment sold will be determined by the contract of sale and may differ from the depicted. Whilst every effort is made to provide accurate and complete information, the developer does not warrant or represent that the information in this floor plan is free from errors or omissions or is suitable for your intended use. Subject to any terms implied by law which cannot be excluded, the developer accepts no responsibility for any loss, damage, cost or expense (whether direct or indirect) by you as a result of any error, omission or misrepresentation in information. Areas noted have derived from using the 'Property Council of Australia Method of Measurement'. All information is subject to change without notice.



APARTMENT STYLE 13

SPECIFICATIONS

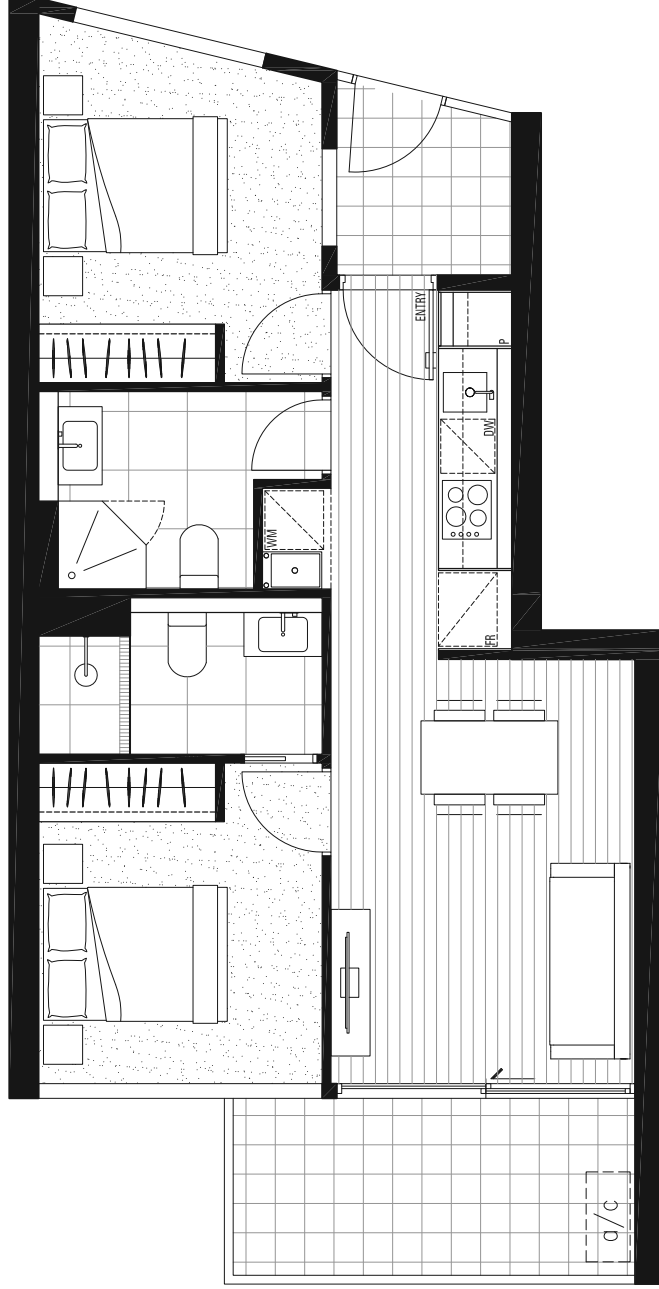


AREA (m²)

Internal 57.0

External 11.8

TOTAL 68.8



PANORAMA
BOX HILL

1 Disclaimer: The information provided is illustrative only and may not be relied upon. In particular, the final area dimensions of any apartment sold will be determined by the contract of sale and may differ from the depicted. Whilst every effort is made to provide accurate and complete information, the developer does not warrant or represent that the information in this floor plan is free from errors or omissions or is suitable for your intended use. Subject to any terms implied by law which cannot be excluded, the developer accepts no responsibility for any loss, damage, cost or expense (whether direct or indirect) by you as a result of any error, omission or misrepresentation in information. Areas noted have derived from using the 'Property Council of Australia Method of Measurement'. All information is subject to change without notice.

APARTMENT STYLE 13a

SPECIFICATIONS

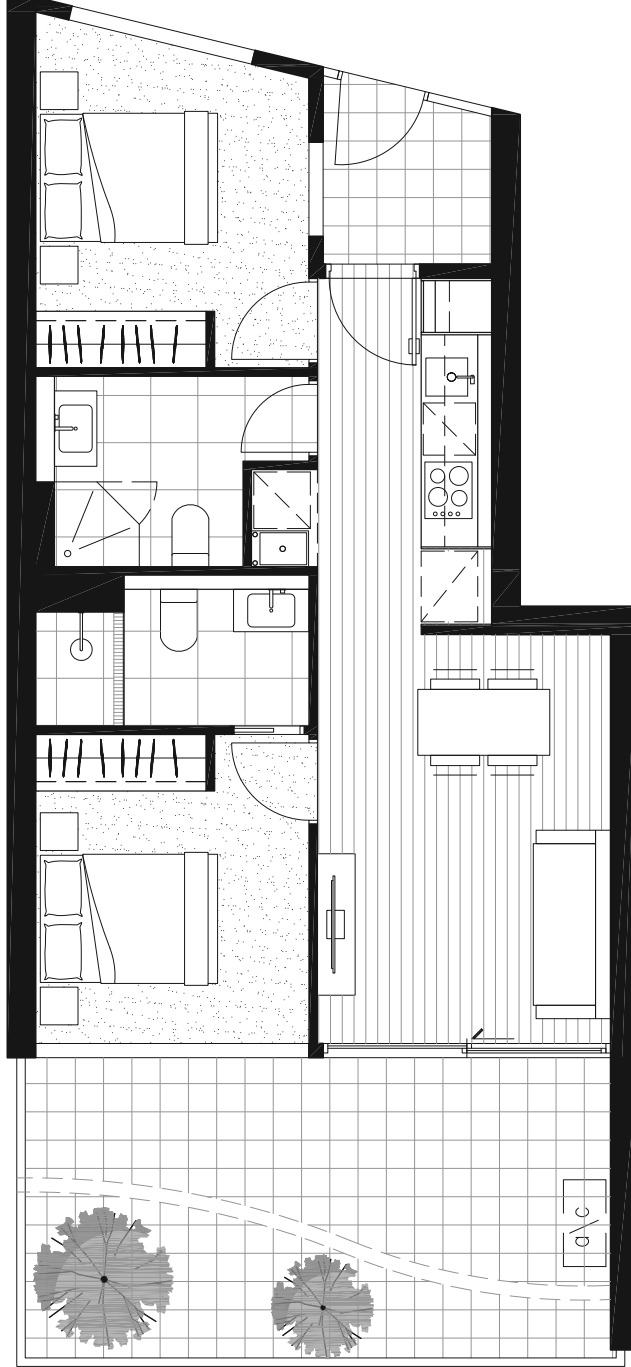
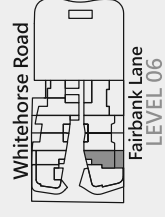


AREA (m²)

Internal 57.0

External 24.5

TOTAL 81.5



PANORAMA
BOX HILL

1 Disclaimer: The information provided is illustrative only and may not be relied upon. In particular, the final area dimensions of any apartment sold will be determined by the contract of sale and may differ from the depicted. Whilst every effort is made to provide accurate and complete information, the developer does not warrant or represent that the information in this floor plan is free from errors or omissions or is suitable for your intended use. Subject to any terms implied by law which cannot be excluded, the developer accepts no responsibility for any loss, damage, cost or expense (whether direct or indirect) by you as a result of any error, omission or misrepresentation in information. Areas noted have derived from using the 'Property Council of Australia Method of Measurement'. All information is subject to change without notice.

APARTMENT STYLE 13b

SPECIFICATIONS



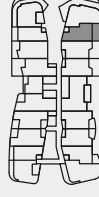
AREA (m²)

Internal 57.0

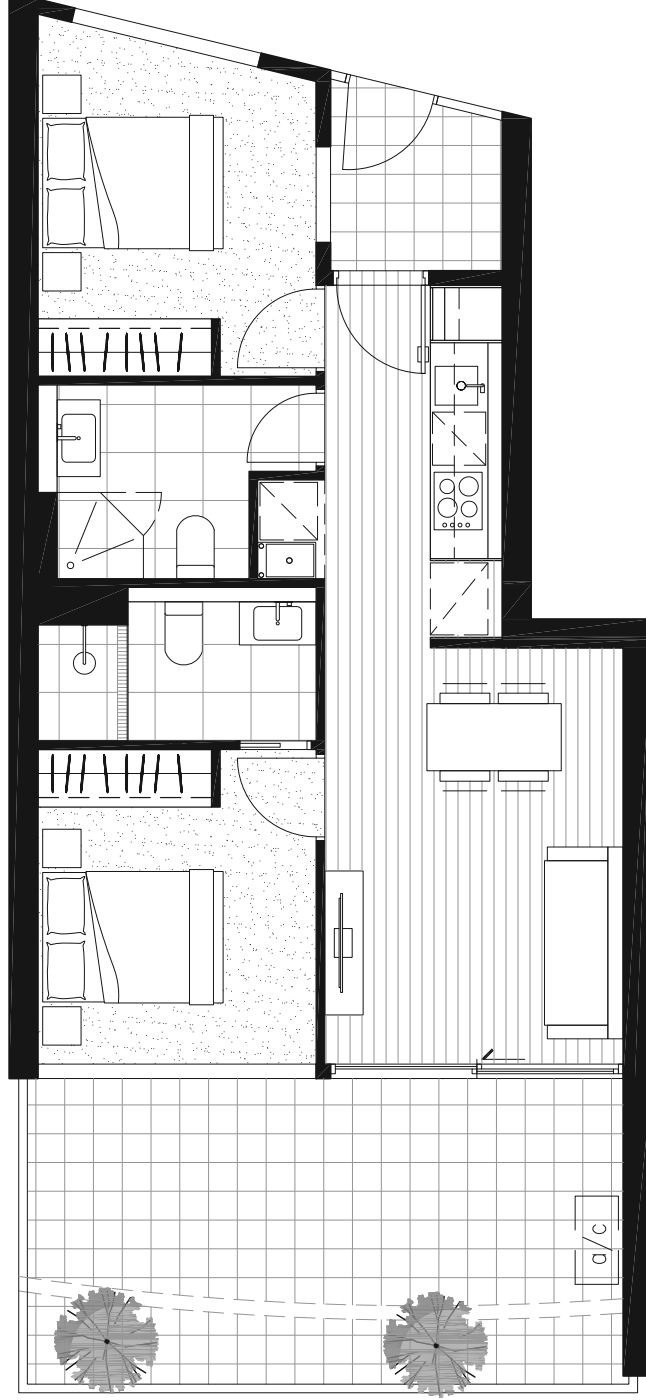
External 24.5

TOTAL 81.5

Whitehorse Road



LEVEL 08



1

Disclaimer: The information provided is illustrative only and may not be relied upon. In particular, the final area dimensions of any apartment sold will be determined by the contract of sale and may differ from the depicted. Whilst every effort is made to provide accurate and complete information, the developer does not warrant or represent that the information in this floor plan is free from errors or omissions or is suitable for your intended use. Subject to any terms implied by law which cannot be excluded, the developer accepts no responsibility for any loss, damage, cost or expense (whether direct or indirect) by you as a result of any error, omission or misrepresentation in information. Areas noted have derived from using the 'Property Council of Australia Method of Measurement'. All information is subject to change without notice.

APARTMENT STYLE 14

SPECIFICATIONS

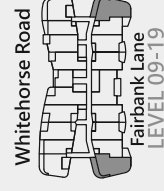
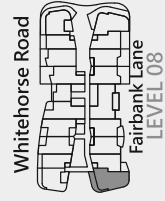
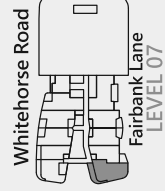
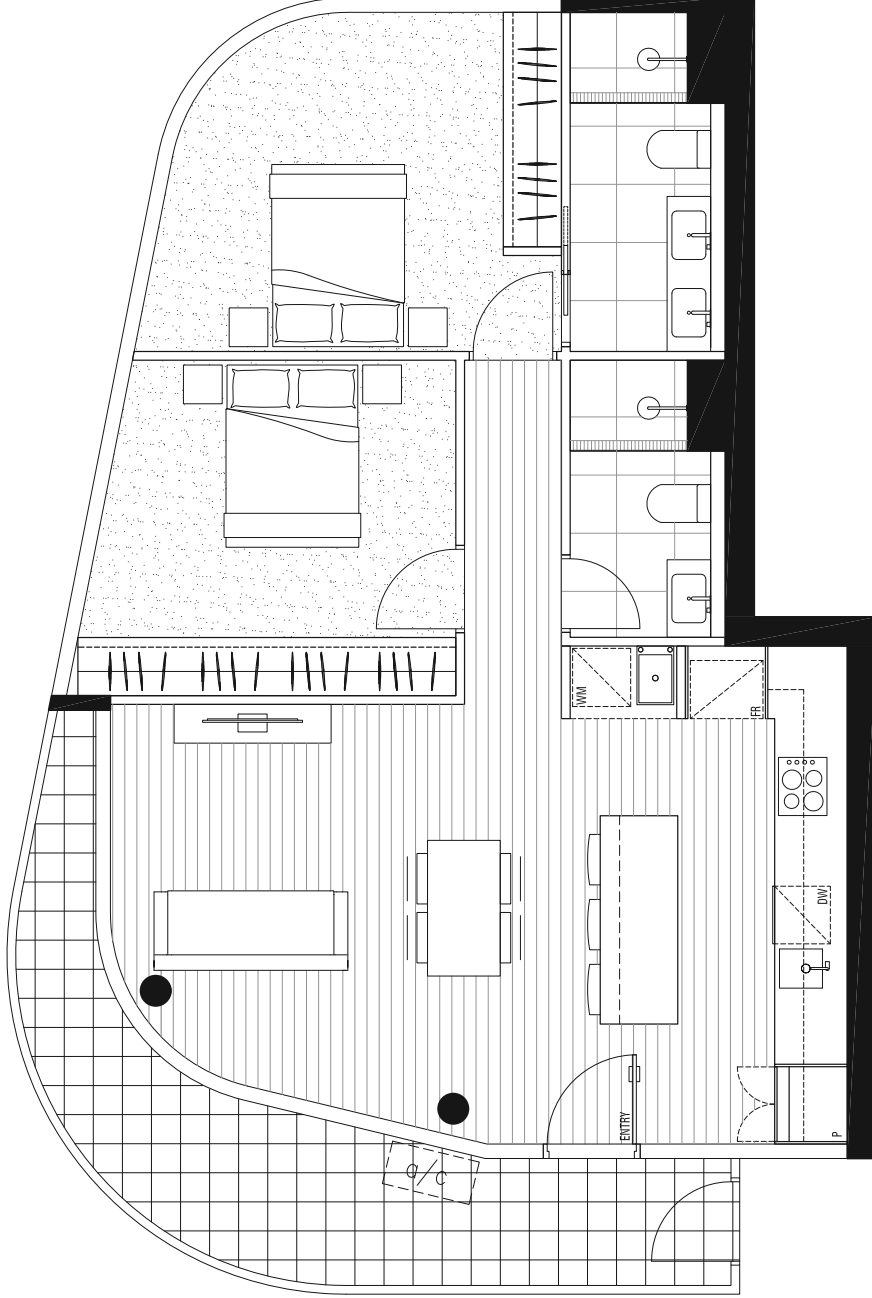


AREA (m²)

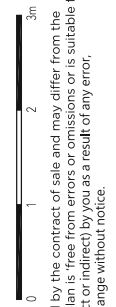
Internal 81.7

External 14.1

TOTAL 95.8



PANORAMA
BOX HILL



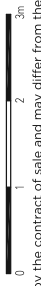
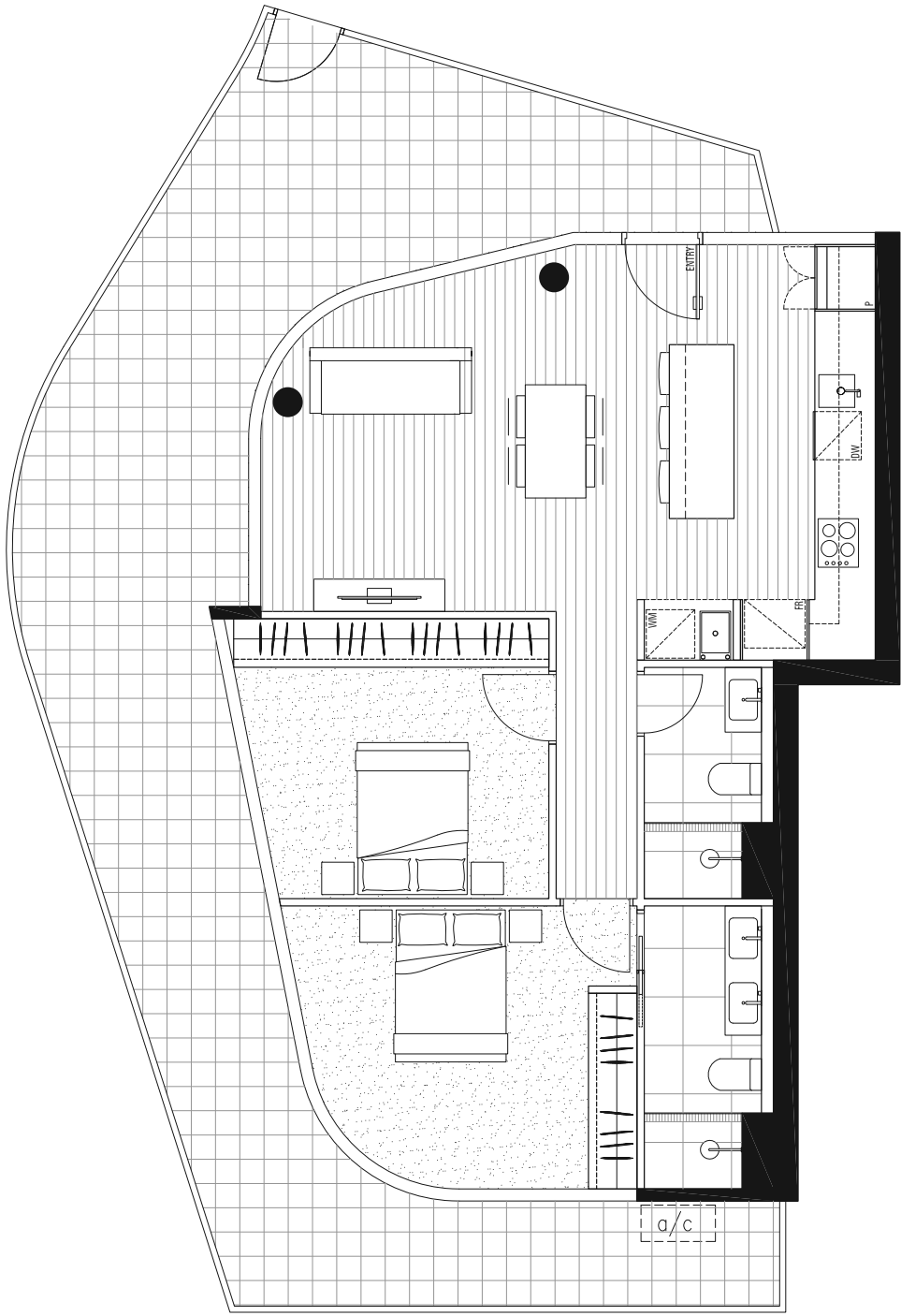
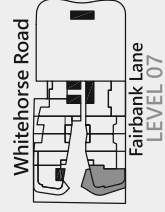
1 Disclaimer: The information provided is illustrative only and may not be relied upon. In particular, the final area dimensions of any apartment sold will be determined by the contract of sale and may differ from the depicted. Whilst every effort is made to provide accurate and complete information, the developer does not warrant or represent that the information in this floor plan is free from errors or omissions or is suitable for your intended use. Subject to any terms implied by law which cannot be excluded, the developer accepts no responsibility for any loss, damage, cost or expense (whether direct or indirect) by you as a result of any error, omission or misrepresentation in information. Areas noted have derived from using the 'Property Council of Australia Method of Measurement'. All information is subject to change without notice.

APARTMENT STYLE 14a

SPECIFICATIONS



AREA (m ²)	
Internal	81.7
External	53.6
TOTAL	135.3



1 Disclaimer: The information provided is illustrative only and may not be relied upon. In particular, the final area dimensions of any apartment sold will be determined by the contract of sale and may differ from the depicted. Whilst every effort is made to provide accurate and complete information, the developer does not warrant or represent that the information in this floor plan is free from errors or omissions or is suitable for your intended use. Subject to any terms implied by law which cannot be excluded, the developer accepts no responsibility for any loss, damage, cost or expense (whether direct or indirect) by you as a result of any error, omission or misrepresentation in information. Areas noted have derived from using the 'Property Council of Australia Method of Measurement'. All information is subject to change without notice.

APARTMENT STYLE 14b

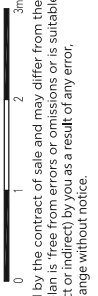
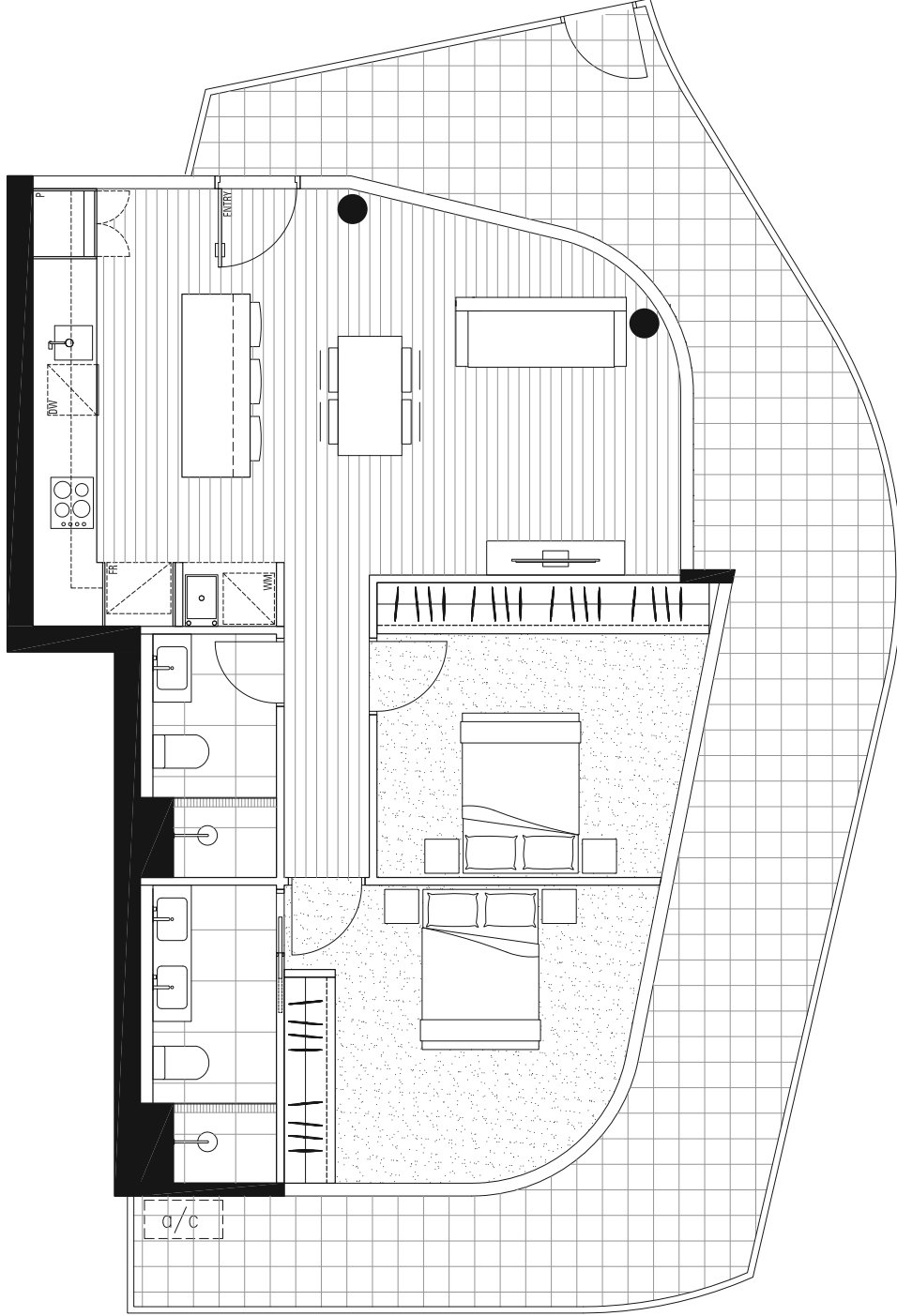
SPECIFICATIONS



AREA (m²)

Internal 81.7
External 44.9

TOTAL 126.6



1 Disclaimer: The information provided is illustrative only and may not be relied upon. In particular, the final area dimensions of any apartment sold will be determined by the contract of sale and may differ from the depicted. Whilst every effort is made to provide accurate and complete information, the developer does not warrant or represent that the information in this floor plan is free from errors or omissions or is suitable for your intended use. Subject to any terms implied by law which cannot be excluded, the developer accepts no responsibility for any loss, damage, cost or expense (whether direct or indirect) by you as a result of any error, omission or misrepresentation in information. Areas noted have derived from using the 'Property Council of Australia Method of Measurement'. All information is subject to change without notice.

APARTMENT STYLE 15

SPECIFICATIONS



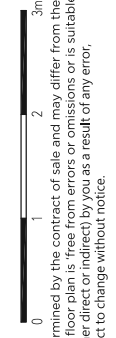
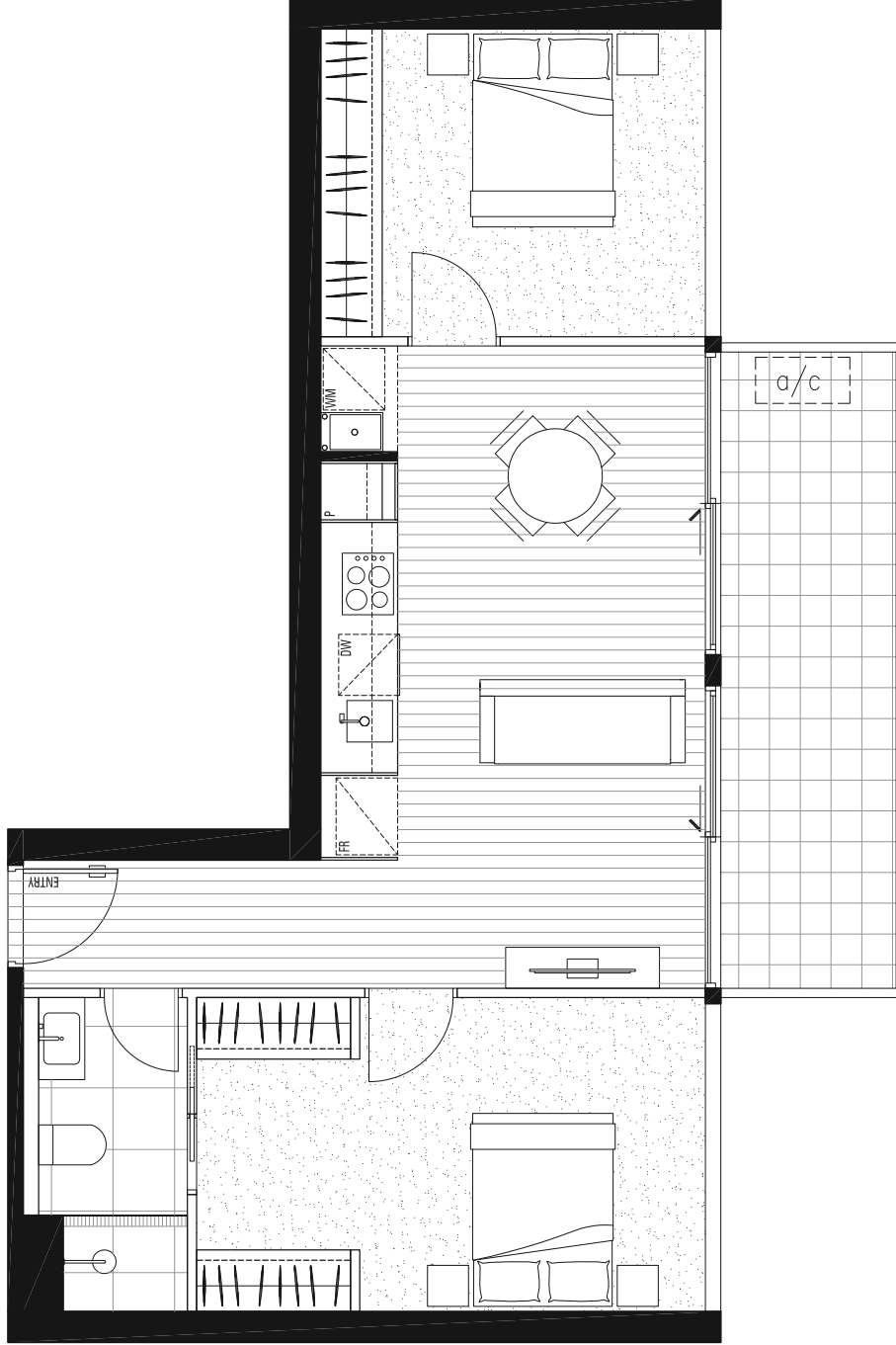
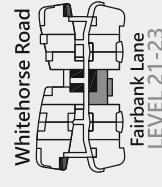
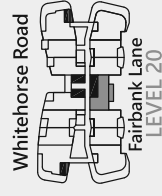
2

1

AREA (m²)

Internal 65.4
External 11.4

TOTAL 76.8



①

Disclaimer: The information provided is illustrative only and may not be relied upon. In particular, the final area dimensions of any apartment sold will be determined by the contract of sale and may differ from the depicted. Whilst every effort is made to provide accurate and complete information, the developer does not warrant or represent that the information in this floor plan is free from errors or omissions or is suitable for your intended use. Subject to any terms implied by law which cannot be excluded, the developer accepts no responsibility for any loss, damage, cost or expense (whether direct or indirect) by you as a result of any error, omission or misrepresentation in information. Areas noted have derived from using the 'Property Council of Australia Method of Measurement'. All information is subject to change without notice.

APARTMENT STYLE 16

SPECIFICATIONS



3

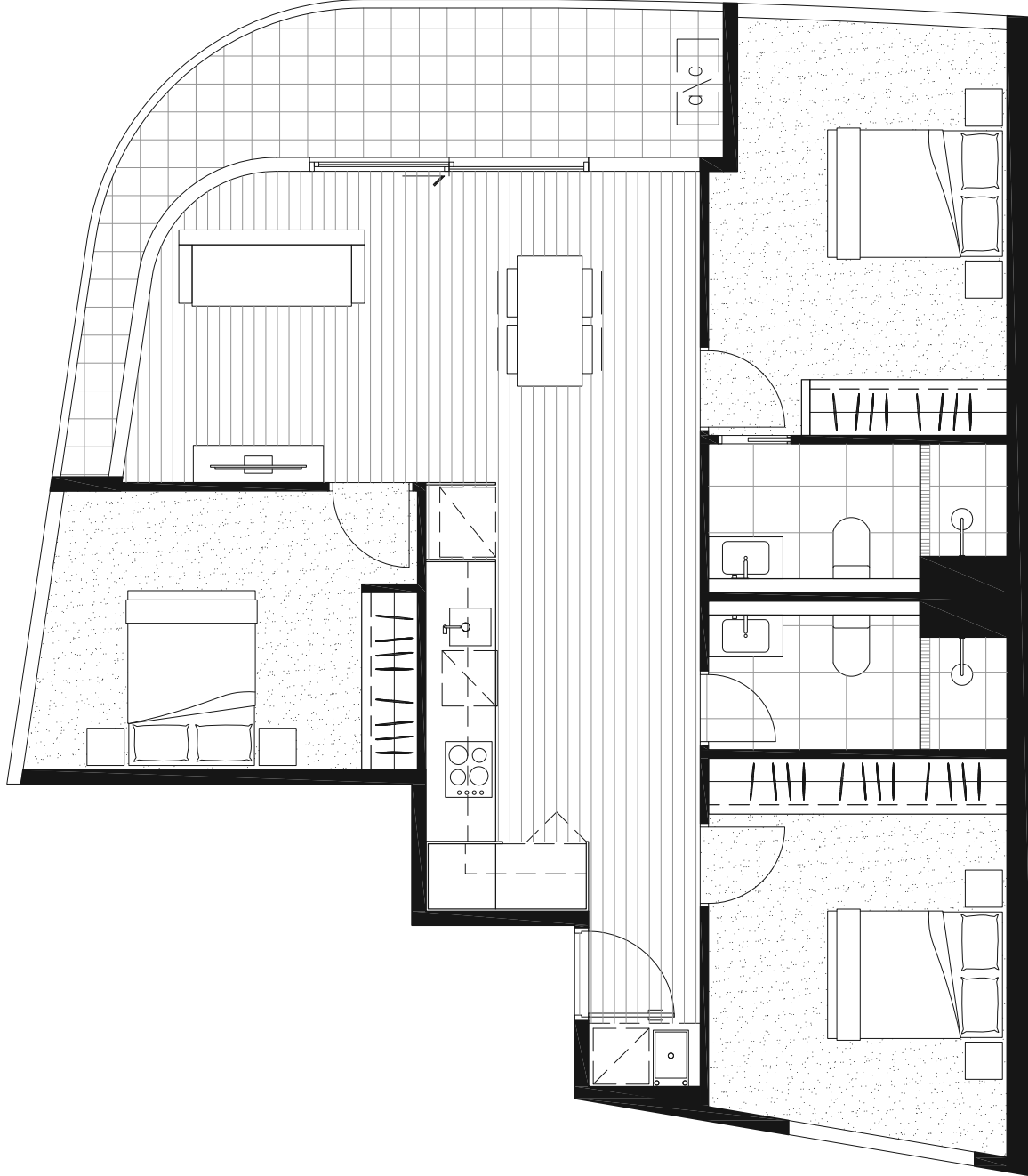
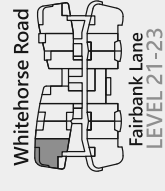
2

AREA (m²)

Internal 93.6

External 12.1

TOTAL 105.7



①

Disclaimer: The information provided is illustrative only and may not be relied upon. In particular, the final area dimensions of any apartment sold will be determined by the contract of sale and may differ from the depicted. Whilst every effort is made to provide accurate and complete information, the developer does not warrant or represent that the information in this floor plan is free from errors or omissions or is suitable for your intended use. Subject to any terms implied by law which cannot be excluded, the developer accepts no responsibility for any loss, damage, cost or expense (whether direct or indirect) by you as a result of any error, omission or misrepresentation in information. Areas noted have derived from using the 'Property Council of Australia Method of Measurement'. All information is subject to change without notice.

APARTMENT STYLE 16a

SPECIFICATIONS

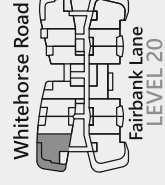


AREA (m²)

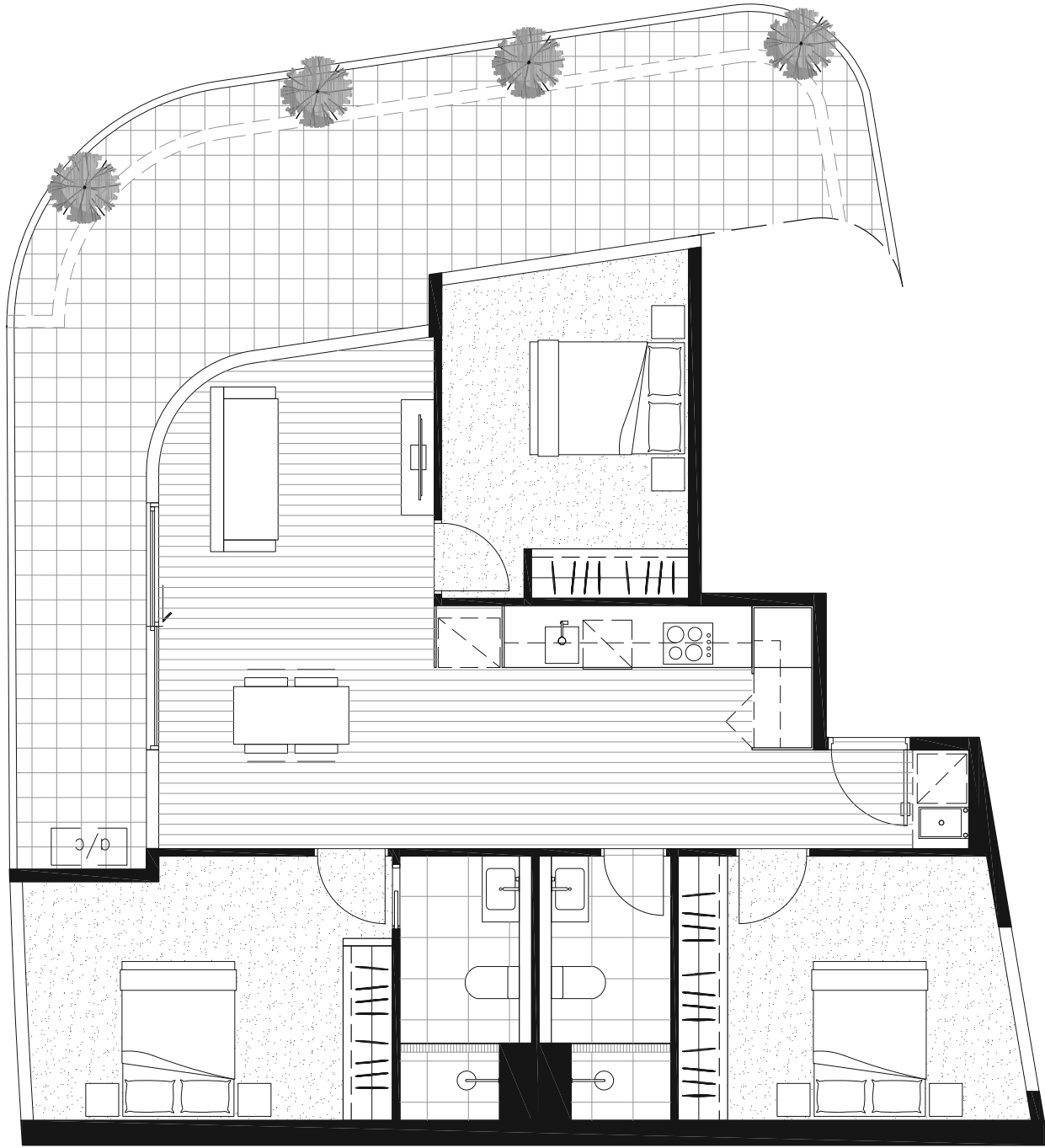
Internal 93.6

External 40.5

TOTAL 134.1



PANORAMA
BOX HILL



①

Disclaimer: The information provided is illustrative only and may not be relied upon. In particular, the final area dimensions of any apartment sold will be determined by the contract of sale and may differ from the depicted. Whilst every effort is made to provide accurate and complete information, the developer does not warrant or represent that the information in this floor plan is free from errors or omissions or is suitable for your intended use. Subject to any terms implied by law which cannot be excluded, the developer accepts no responsibility for any loss, damage, cost or expense (whether direct or indirect) by you as a result of any error, omission or misrepresentation in information. Areas noted have derived from using the 'Property Council of Australia Method of Measurement'. All information is subject to change without notice.

APARTMENT STYLE 17

SPECIFICATIONS

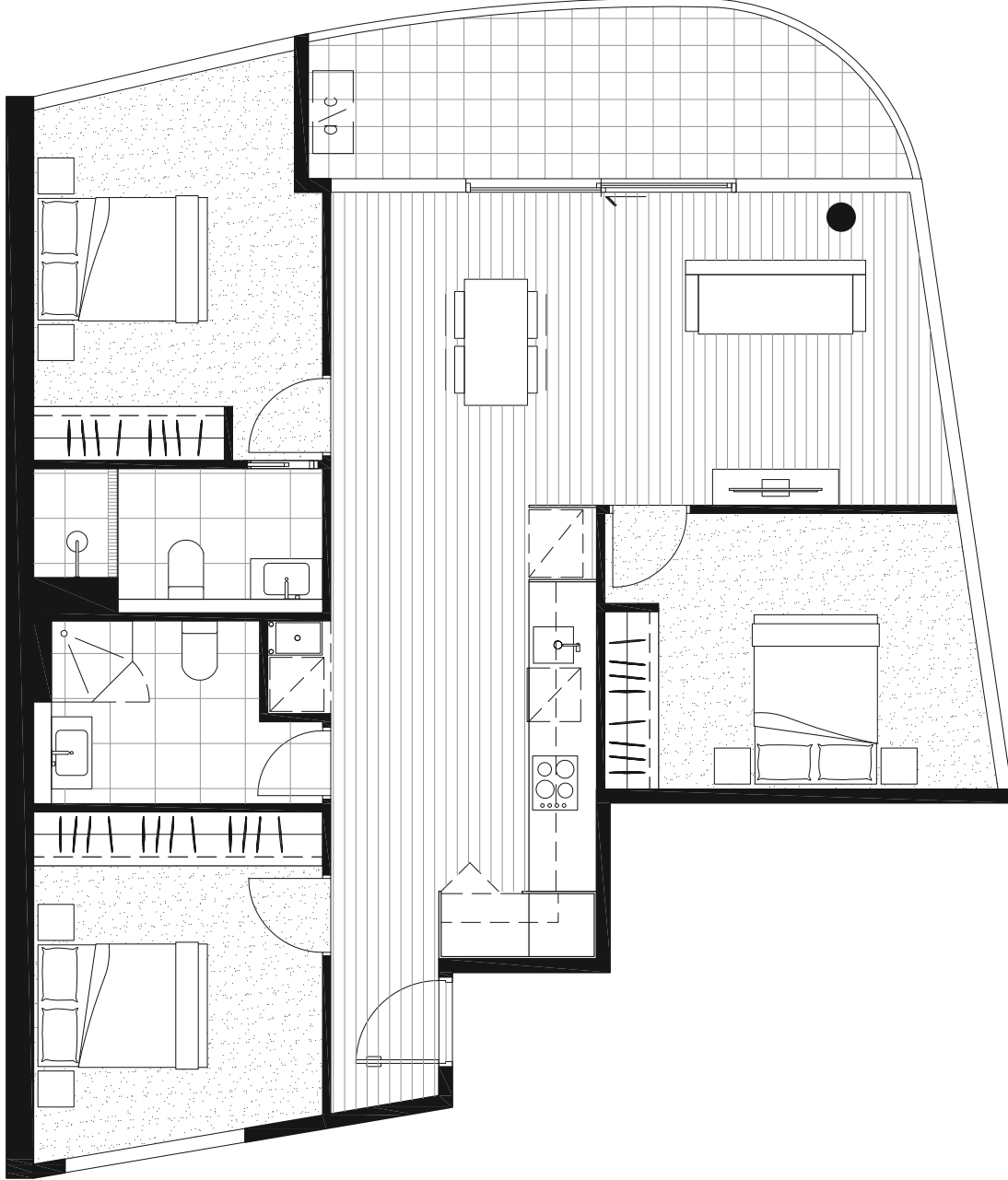


AREA (m²)

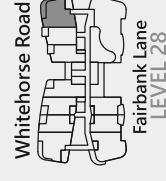
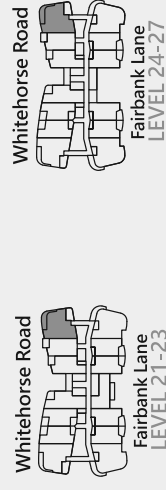
Internal 98.3

External 11.8

TOTAL 110.1



1 Disclaimer: The information provided is illustrative only and may not be relied upon. In particular, the final area dimensions of any apartment sold will be determined by the contract of sale and may differ from the depicted. Whilst every effort is made to provide accurate and complete information, the developer does not warrant or represent that the information in this floor plan is free from errors or omissions or is suitable for your intended use. Subject to any terms implied by law which cannot be excluded, the developer accepts no responsibility for any loss, damage, cost or expense (whether direct or indirect) by you as a result of any error, omission or misrepresentation in information. Areas noted have derived from using the 'Property Council of Australia Method of Measurement'. All information is subject to change without notice.



 **PANORAMA**
BOX HILL

APARTMENT STYLE 17a

SPECIFICATIONS



3

2

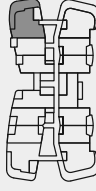
AREA (m²)

Internal 98.3

External 44.9

TOTAL 143.2

Whitehorse Road

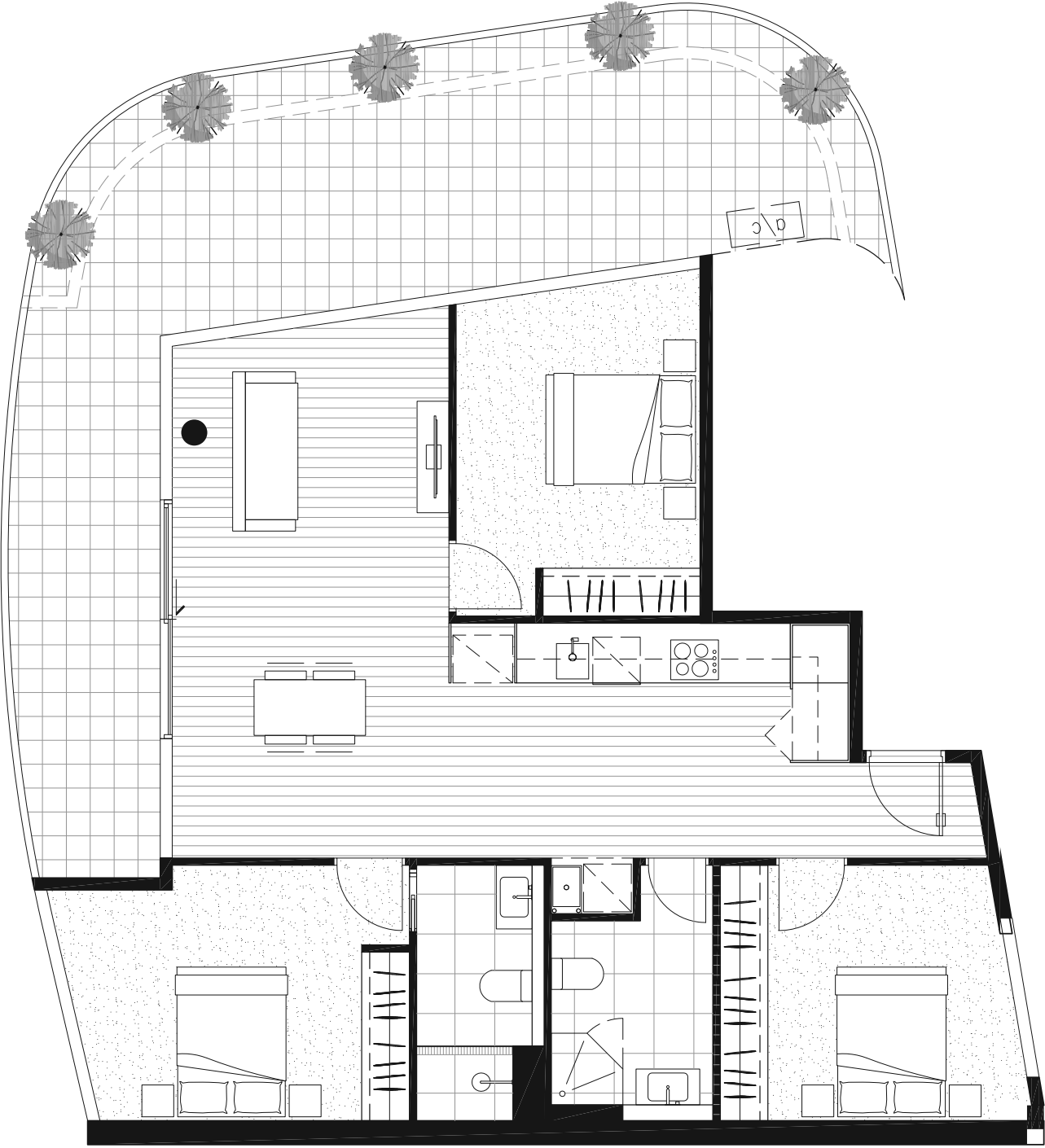


Fairbank Lane
LEVEL 20



PANORAMA

BOX HILL



1 Disclaimer: The information provided is illustrative only and may not be relied upon. In particular, the final area dimensions of any apartment sold will be determined by the contract of sale and may differ from the depicted. Whilst every effort is made to provide accurate and complete information, the developer does not warrant or represent that the information in this floor plan is free from errors or omissions or is suitable for your intended use. Subject to any terms implied by law which cannot be excluded, the developer accepts no responsibility for any loss, damage, cost or expense (whether direct or indirect) by you as a result of any error, omission or misrepresentation in information. Areas noted have derived from using the 'Property Council of Australia Method of Measurement'. All information is subject to change without notice.

APARTMENT STYLE 18

SPECIFICATIONS



3

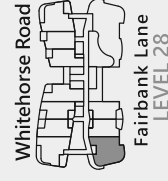
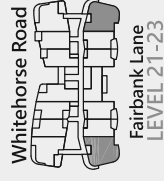
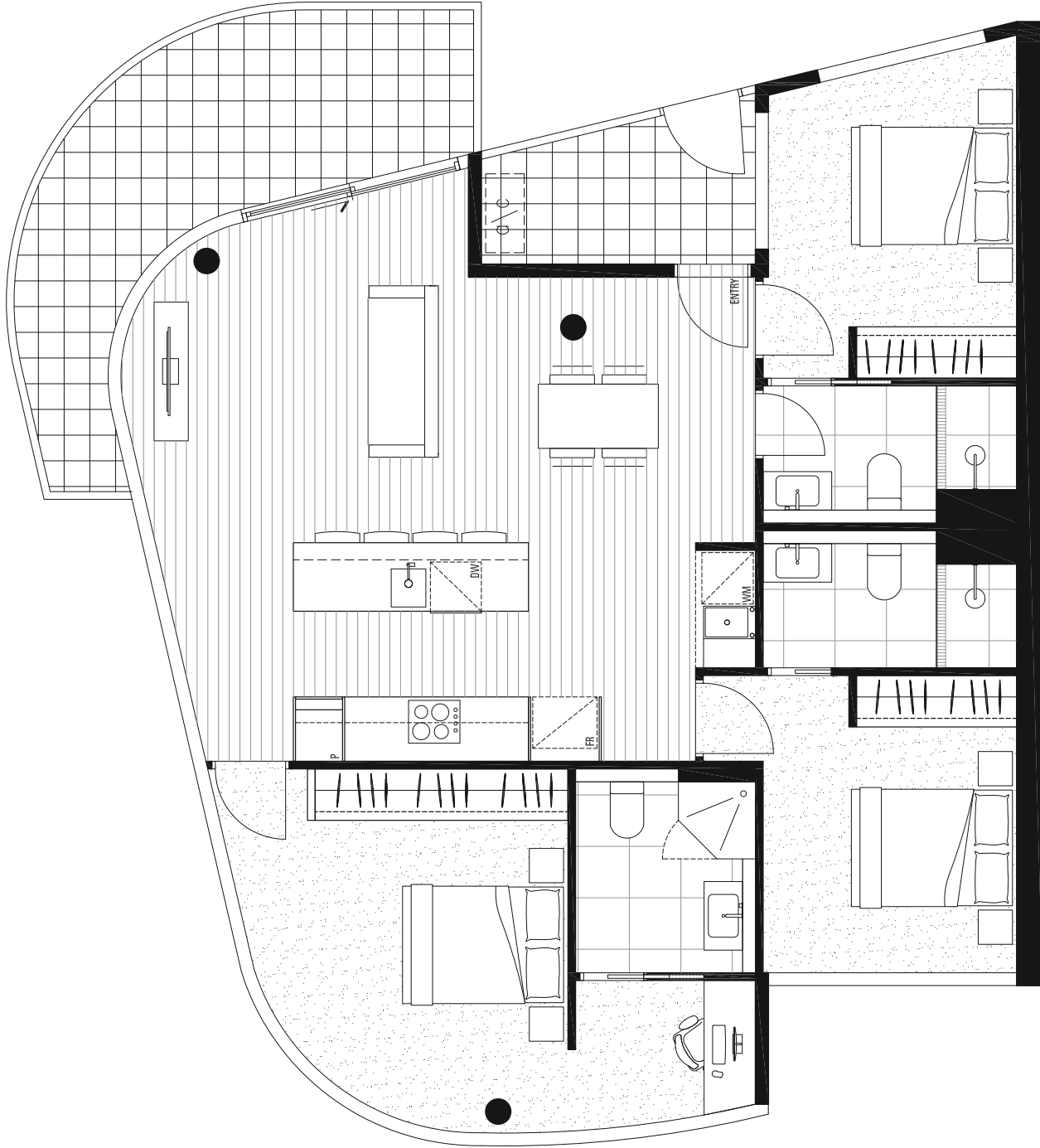
3

AREA (m²)

Internal 105.6

External 19.8

TOTAL 125.4



PANORAMA

BOX HILL

①

Disclaimer: The information provided is illustrative only and may not be relied upon. In particular, the final area dimensions of any apartment sold will be determined by the contract of sale and may differ from the depicted. Whilst every effort is made to provide accurate and complete information, the developer does not warrant or represent that the information in this floor plan is free from errors or omissions or is suitable for your intended use. Subject to any terms implied by law which cannot be excluded, the developer accepts no responsibility for any loss, damage, cost or expense (whether direct or indirect) by you as a result of any error, omission or misrepresentation in information. Areas noted have derived from using the 'Property Council of Australia Method of Measurement'. All information is subject to change without notice.

APARTMENT STYLE 18a

SPECIFICATIONS



3

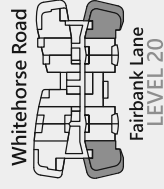
3

AREA (m²)

Internal 105.6

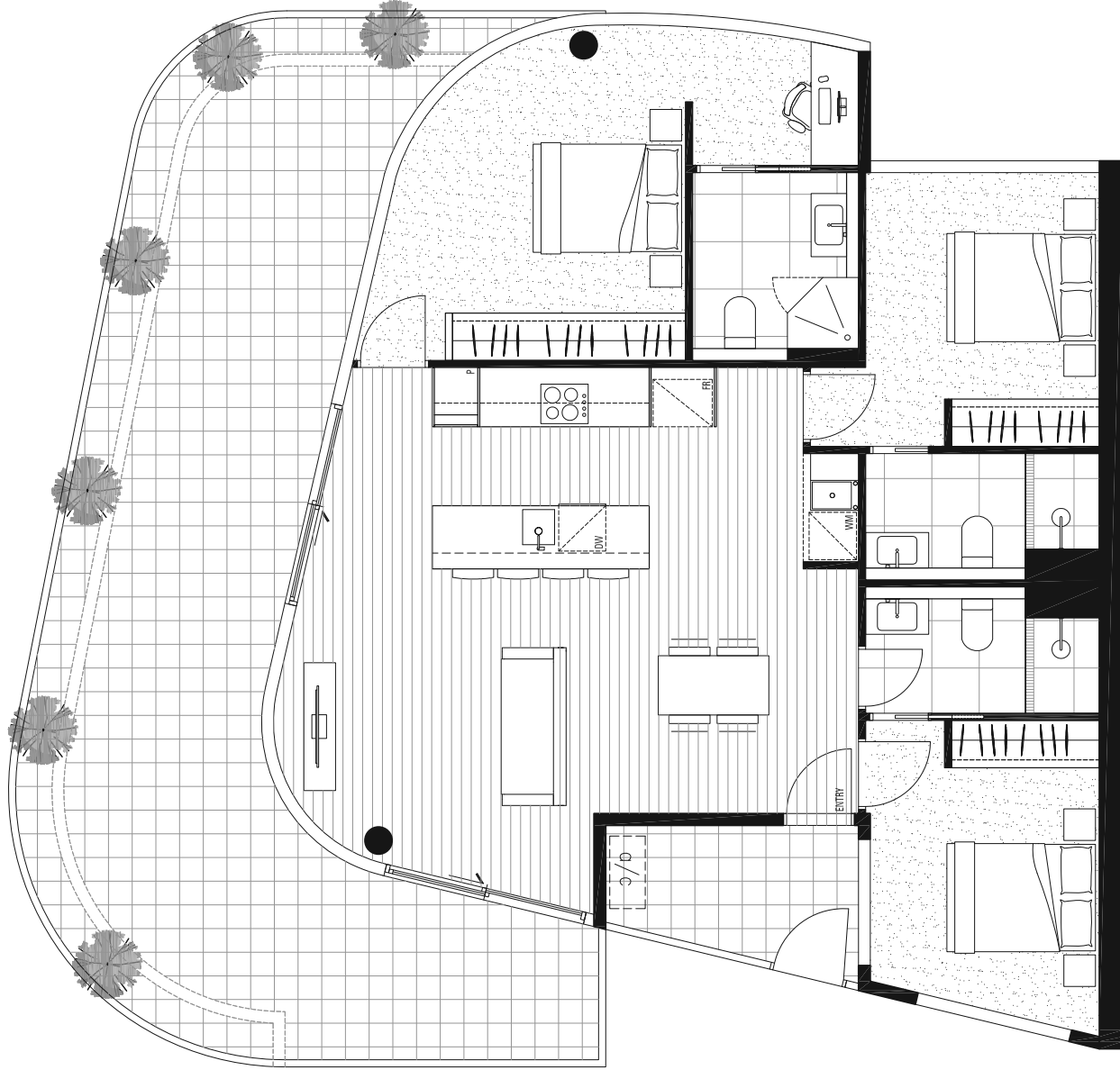
External 56.5

TOTAL 162.1



PANORAMA

BOX HILL



①

Disclaimer: The information provided is illustrative only and may not be relied upon. In particular, the final area dimensions of any apartment sold will be determined by the contract of sale and may differ from the depicted. Whilst every effort is made to provide accurate and complete information, the developer does not warrant or represent that the information in this floor plan is free from errors or omissions or is suitable for your intended use. Subject to any terms implied by law which cannot be excluded, the developer accepts no responsibility for any loss, damage, cost or expense (whether direct or indirect) by you as a result of any error, omission or misrepresentation in information. Areas noted have derived from using the 'Property Council of Australia Method of Measurement'. All information is subject to change without notice.



APARTMENT STYLE 19

SPECIFICATIONS

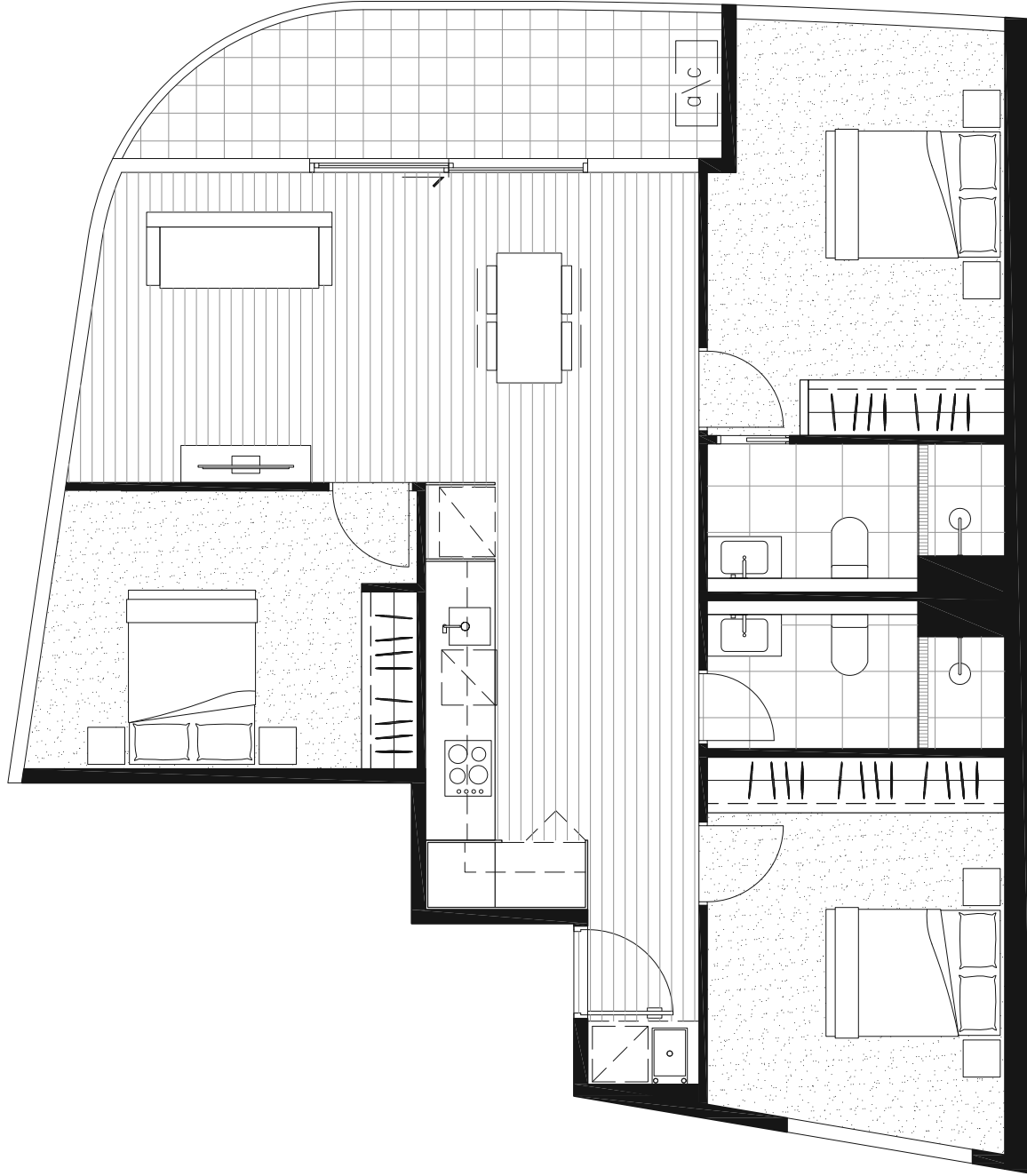
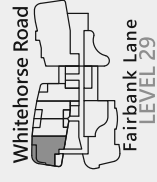
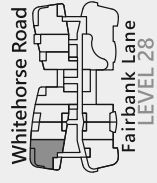
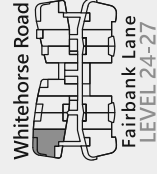


AREA (m²)

Internal 96.0

External 9.7

TOTAL 105.7



1

Disclaimer: The information provided is illustrative only and may not be relied upon. In particular, the final area dimensions of any apartment sold will be determined by the contract of sale and may differ from the depicted. Whilst every effort is made to provide accurate and complete information, the developer does not warrant or represent that the information in this floor plan is free from errors or omissions or is suitable for your intended use. Subject to any terms implied by law which cannot be excluded, the developer accepts no responsibility for any loss, damage, cost or expense (whether direct or indirect) by you as a result of any error, omission or misrepresentation in information. Areas noted have derived from using the 'Property Council of Australia Method of Measurement'. All information is subject to change without notice.


PANORAMA
 BOX HILL

APARTMENT STYLE 21

SPECIFICATIONS

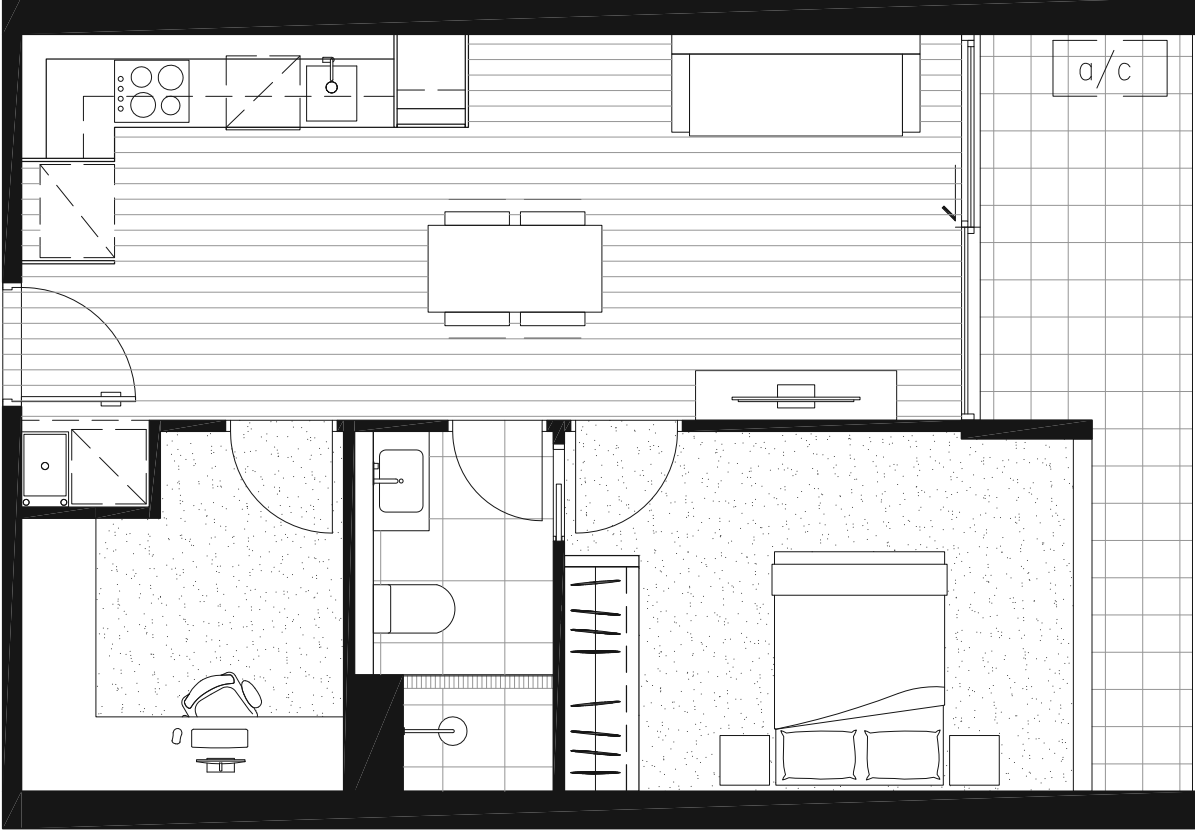
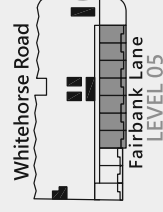


AREA (m²)

Internal 53.2

External 8.7

TOTAL 61.9



①

Disclaimer: The information provided is illustrative only and may not be relied upon. In particular, the final area dimensions of any apartment sold will be determined by the contract of sale and may differ from the depicted. Whilst every effort is made to provide accurate and complete information, the developer does not warrant or represent that the information in this floor plan is free from errors or omissions or is suitable for your intended use. Subject to any terms implied by law which cannot be excluded, the developer accepts no responsibility for any loss, damage, cost or expense (whether direct or indirect) by you as a result of any error, omission or misrepresentation in information. Areas noted have derived from using the 'Property Council of Australia Method of Measurement'. All information is subject to change without notice.

APARTMENT STYLE 22

SPECIFICATIONS

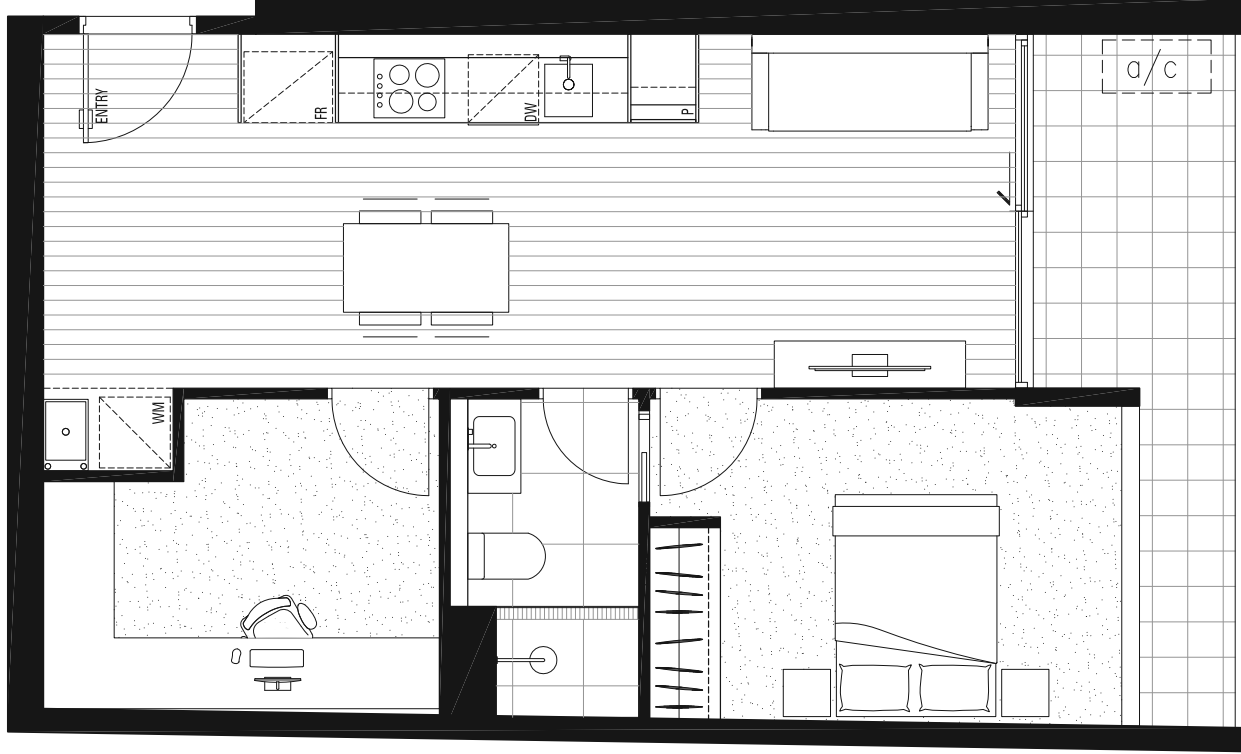
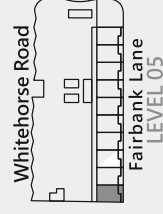


AREA (m²)

Internal 55.0

External 8.4

TOTAL 63.4



①

Disclaimer: The information provided is illustrative only and may not be relied upon. In particular, the final area dimensions of any apartment sold will be determined by the contract of sale and may differ from the depicted. Whilst every effort is made to provide accurate and complete information, the developer does not warrant or represent that the information in this floor plan is free from errors or omissions or is suitable for your intended use. Subject to any terms implied by law which cannot be excluded, the developer accepts no responsibility for any loss, damage, cost or expense (whether direct or indirect) by you as a result of any error, omission or misrepresentation in information. Areas noted have derived from using the 'Property Council of Australia Method of Measurement'. All information is subject to change without notice.

PANORAMA
BOX HILL

APARTMENT STYLE 23

SPECIFICATIONS

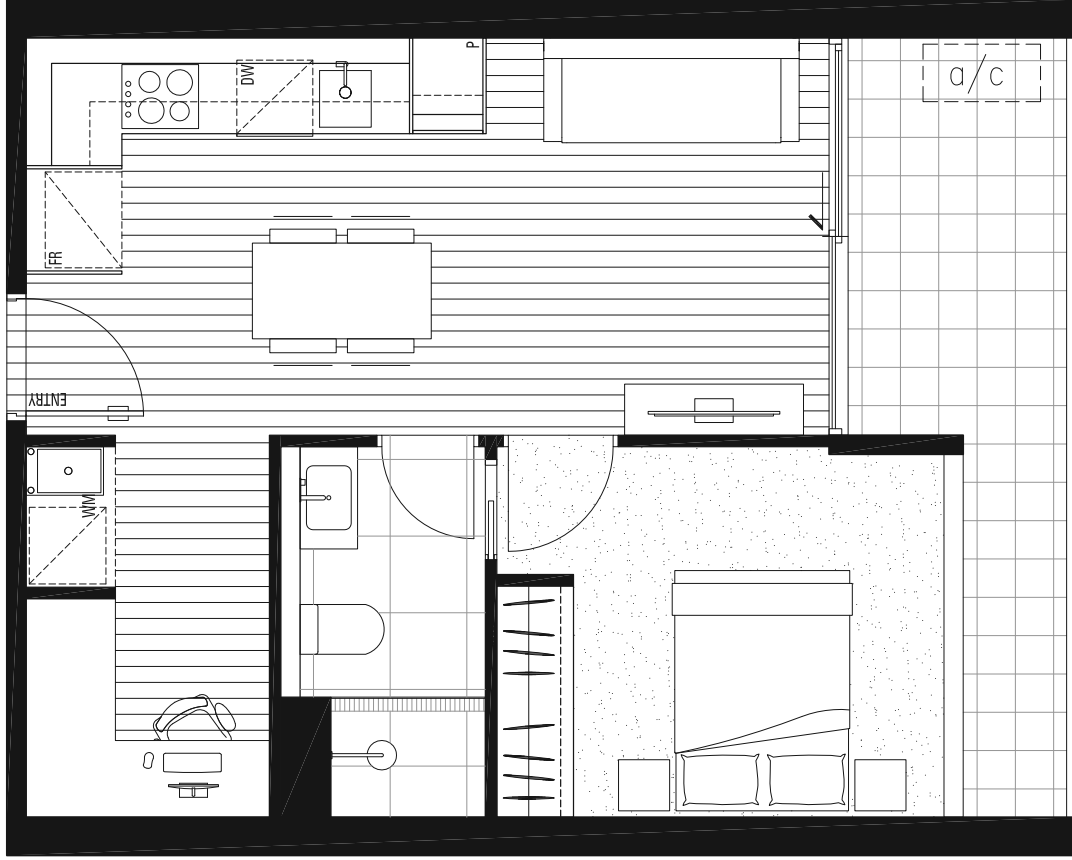
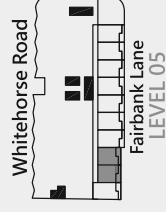


AREA (m²)

Internal 50.0

External 8.7

TOTAL 58.7



ⓘ Disclaimer: The information provided is illustrative only and may not be relied upon. In particular, the final area dimensions of any apartment sold will be determined by the contract of sale and may differ from the depicted. Whilst every effort is made to provide accurate and complete information, the developer does not warrant or represent that the information in this floor plan is free from errors or omissions or is suitable for your intended use. Subject to any terms implied by law which cannot be excluded, the developer accepts no responsibility for any loss, damage, cost or expense (whether direct or indirect) by you as a result of any error, omission or misrepresentation in information. Areas noted have derived from using the 'Property Council of Australia Method of Measurement'. All information is subject to change without notice.