

FLOORPLANS





111 A'BECKETT STREET
MELBOURNE

TYPE A1

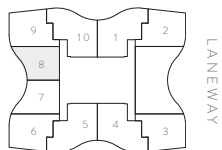
1 BEDROOM
1 BATHROOM
1 STUDY

TOTAL AREA **51M²**

1808 , 1903, 1910, 2003, 2010, 2103, 2110, 2203, 2210, 2303, 2310, 2403, 2410, 2503, 2510, 2603, 2610, 2703, 2710, 2803, 2810, 2903, 2910, 3003, 3010, 3103, 3110, 3203, 3210, 3303, 3310, 3403, 3410, 3503, 3510, 3603, 3610, 3703, 3710, 3803, 3810, 3903, 3910

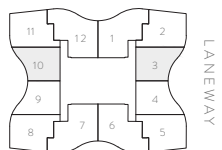
4103, 4210, 4203, 4210, 4303, 4310, 4403, 4410, 4503, 4510, 4603, 4610, 4703, 4710, 4803, 4810, 4903, 4910, 5003, 5010

A' BECKETT ST



LOW RISE, LEVEL 18

A' BECKETT ST

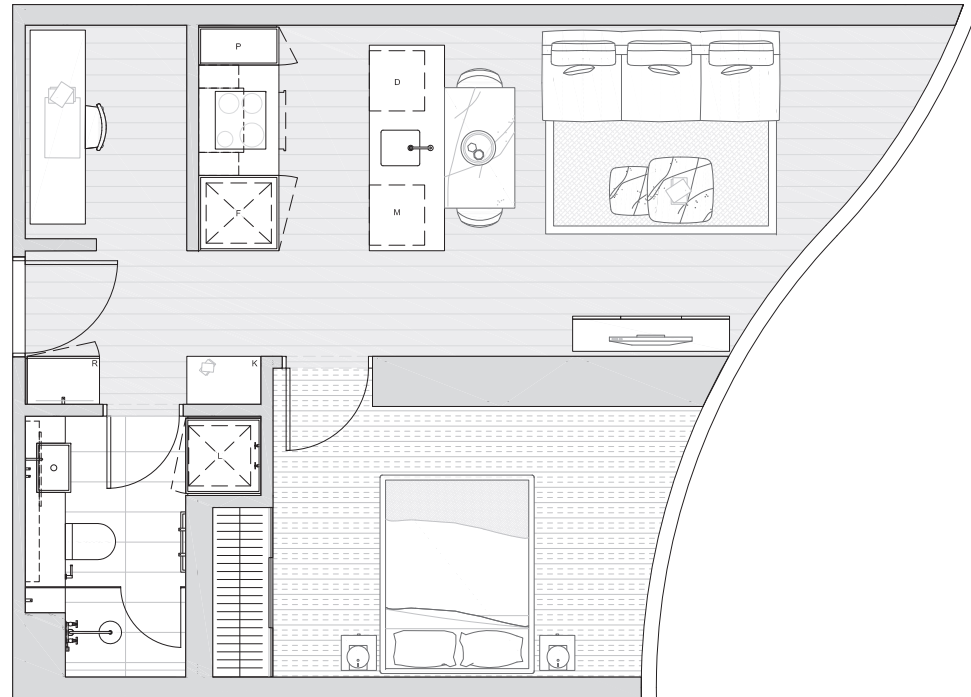


LOW RISE, LEVEL 19-39
MID RISE, LEVEL 41-50



Setia ELENBERG FRASER

- B BAR
- D DISHWASHER
- F FRIDGE
- L LAUNDRY
- K KEY DROP
- M MICROWAVE
- P PANTRY
- R ROBE
- S STUDY



DISCLAIMER

Drawing not to scale. Disclaimer: Whilst we endeavour to ensure the contents of these plans are correct at the time of printing, the information contained is to be used as a guide only. Furnishings and loose floor coverings are for illustrative purposes only, are not shown to scale nor included in the stated price (unless expressly stated). All areas provided are approximate only and provided in accordance with the method of measurements for residential property by the property council of Australia. The plans were completed prior to completion of the building, therefore the design & dimensions are subject to change without notice in accordance with the provision of contract of sale.



111 A'BECKETT STREET
MELBOURNE

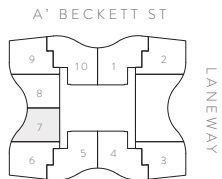
TYPE A2

1 BEDROOM
1 BATHROOM
1 STUDY

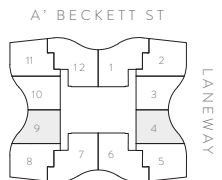
TOTAL AREA **51M²**

1807, 1904, 1909, 2004, 2009, 2104, 2109, 2204, 2209, 2304, 2309, 2404, 2409, 2504, 2509, 2604, 2609, 2704, 2709, 2804, 2809, 2904, 2909, 3004, 3009, 3104, 3109, 3204, 3209, 3304, 3309, 3404, 3409, 3504, 3509, 3604, 3609, 3704, 3709, 3804, 3809, 3904, 3909

4104, 4109, 4204, 4209, 4304, 4309, 4404, 4409, 4504, 4509, 4604, 4609, 4704, 4709, 4804, 4809, 4904, 4909, 5004, 5009



LOW RISE, LEVEL 18

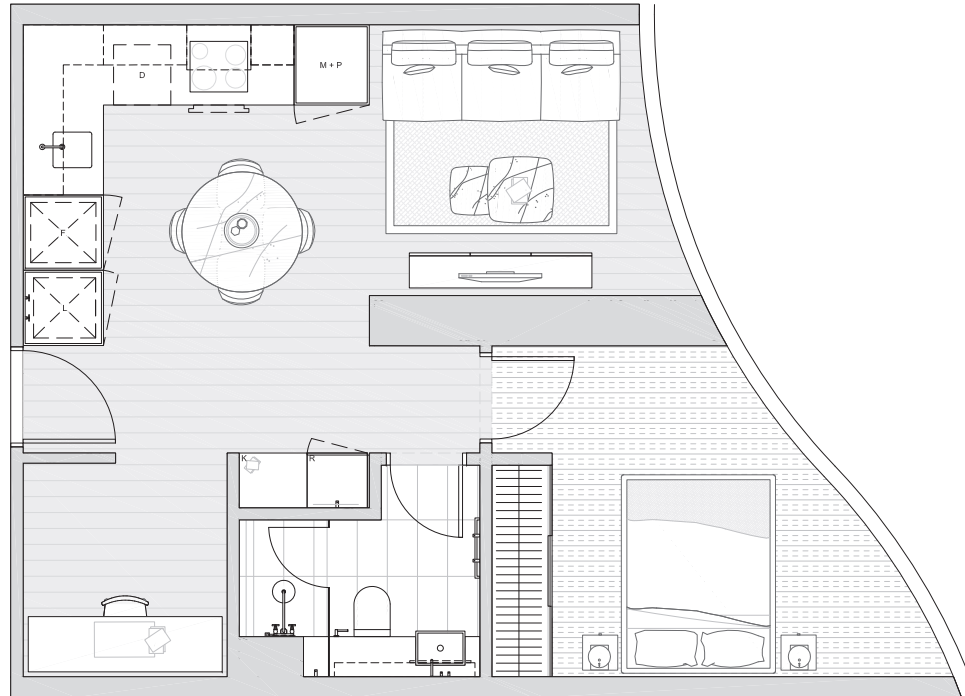


LOW RISE, LEVEL 19-39
MID RISE, LEVEL 41-50



Setia ELENBERG FRASER

- B BAR
- D DISHWASHER
- F FRIDGE
- L LAUNDRY
- K KEY DROP
- M MICROWAVE
- P PANTRY
- R ROBE
- S STUDY



DISCLAIMER

Drawing not to scale. Disclaimer: Whilst we endeavour to ensure the contents of these plans are correct at the time of printing, the information contained is to be used as a guide only. Furnishings and loose floor coverings are for illustrative purposes only, are not shown to scale nor included in the stated price (unless expressly stated). All areas provided are approximate only and provided in accordance with the method of measurements for residential property by the property council of Australia. The plans were completed prior to completion of the building, therefore the design & dimensions are subject to change without notice in accordance with the provision of contract of sale.

UNO

111 A'BECKETT STREET
MELBOURNE

TYPE B1

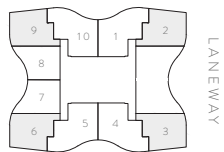
2 BEDROOM
1 BATHROOM

TOTAL AREA **60M²**

1802, 1803, 1806, 1809, 1902, 1905, 1908, 1911, 2002, 2005, 2008, 2011, 2102, 2105, 2108, 2111, 2202, 2205, 2208, 2211, 2302, 2305, 2308, 2311, 2402, 2405, 2408, 2411, 2502, 2505, 2508, 2511, 2602, 2605, 2608, 2611, 2702, 2705, 2708, 2711, 2802, 2805, 2808, 2811, 2902, 2905, 2908, 2911, 3002, 3005, 3008, 3011, 3102, 3105, 3108, 3111, 3202, 3205, 3208, 3211, 3302, 3305, 3308, 3311, 3402, 3405, 3408, 3411, 3502, 3505, 3508, 3511, 3602, 3605, 3608, 3611, 3702, 3705, 3708, 3711, 3802, 3805, 3808, 3811, 3902, 3905, 3908, 3911

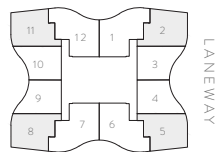
4102, 4105, 4108, 4111, 4202, 4205, 4208, 4211, 4302, 4305, 4308, 4311, 4402, 4405, 4408, 4411, 4502, 4505, 4508, 4511, 4602, 4605, 4608, 4611, 4702, 4705, 4708, 4711, 4802, 4805, 4808, 4811, 4902, 4905, 4908, 4911, 5002, 5005, 5008, 5011

A' BECKETT ST



LOW RISE, LEVEL 18

A' BECKETT ST

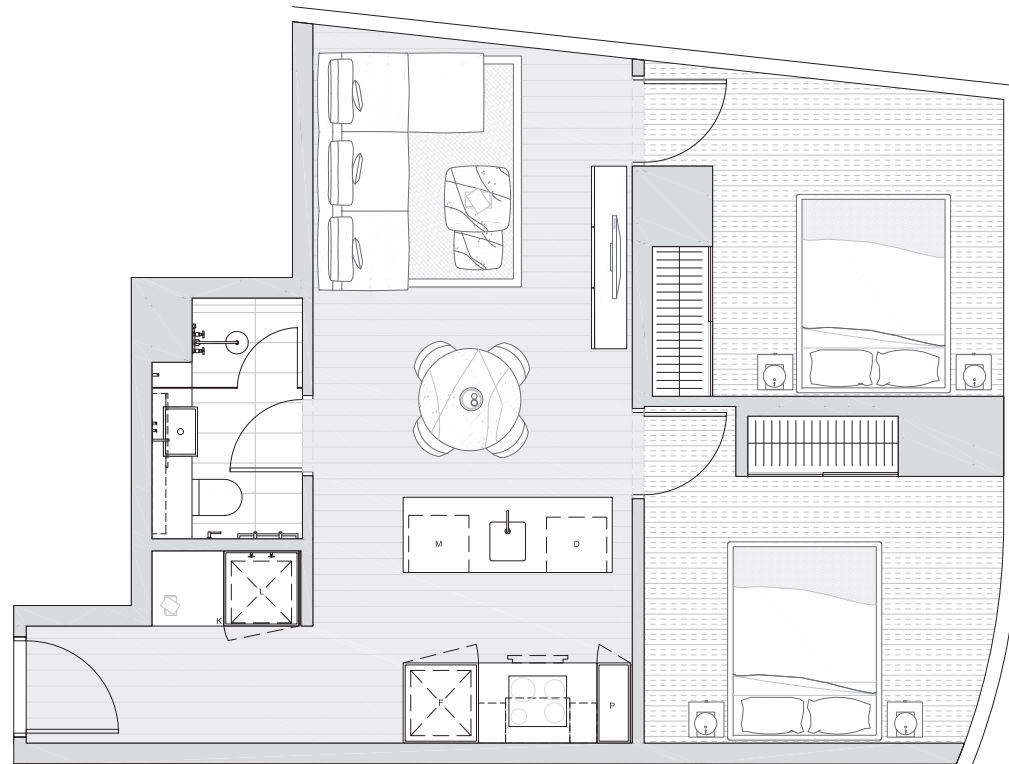


LOW RISE, LEVEL 19-39
MID RISE, LEVEL 41-50



Setia ELENBERG FRASER

- B** BAR
- D** DISHWASHER
- F** FRIDGE
- L** LAUNDRY
- K** KEY DROP
- M** MICROWAVE
- P** PANTRY
- R** ROBE
- S** STUDY



DISCLAIMER

Drawing not to scale. Disclaimer: Whilst we endeavour to ensure the contents of these plans are correct at the time of printing, the information contained is to be used as a guide only. Furnishings and loose floor coverings are for illustrative purposes only, are not shown to scale nor included in the stated price (unless expressly stated). All areas provided are approximate only and provided in accordance with the method of measurements for residential property by the property council of Australia. The plans were completed prior to completion of the building, therefore the design & dimensions are subject to change without notice in accordance with the provision of contract of sale.

UNO

111 A'BECKETT STREET
MELBOURNE

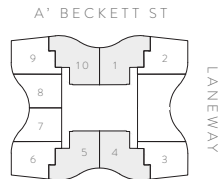
TYPE C1

2 BEDROOM
2 BATHROOM

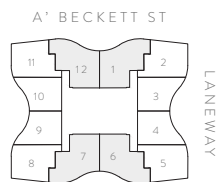
TOTAL AREA **70M²**

1801, 1804, 1805, 1810, 1901, 1906, 1907, 1912, 2001, 2006, 2007, 2012, 2101, 2106, 2107, 2112, 2201, 2206, 2207, 2212, 2301, 2306, 2307, 2312, 2401, 2406, 2407, 2412, 2501, 2506, 2507, 2512, 2601, 2606, 2607, 2612, 2701, 2706, 2707, 2712, 2801, 2806, 2807, 2812, 2901, 2906, 2907, 2912, 3001, 3006, 3007, 3012, 3101, 3106, 3107, 3112, 3201, 3206, 3207, 3212, 3301, 3306, 3307, 3312, 3401, 3406, 3407, 3412, 3501, 3506, 3507, 3512, 3601, 3606, 3607, 3612, 3701, 3706, 3707, 3712, 3801, 3806, 3807, 3812, 3901, 3906, 3907, 3912

4101, 4106, 4107, 4112, 4201, 4206, 4207, 4212, 4301, 4306, 4307, 4312, 4401, 4406, 4407, 4412, 4501, 4506, 4507, 4512, 4601, 4606, 4607, 4612, 4701, 4706, 4707, 4712, 4801, 4806, 4807, 4812, 4901, 4906, 4907, 4912, 5001, 5006, 5007, 5012



LOW RISE, LEVEL 18

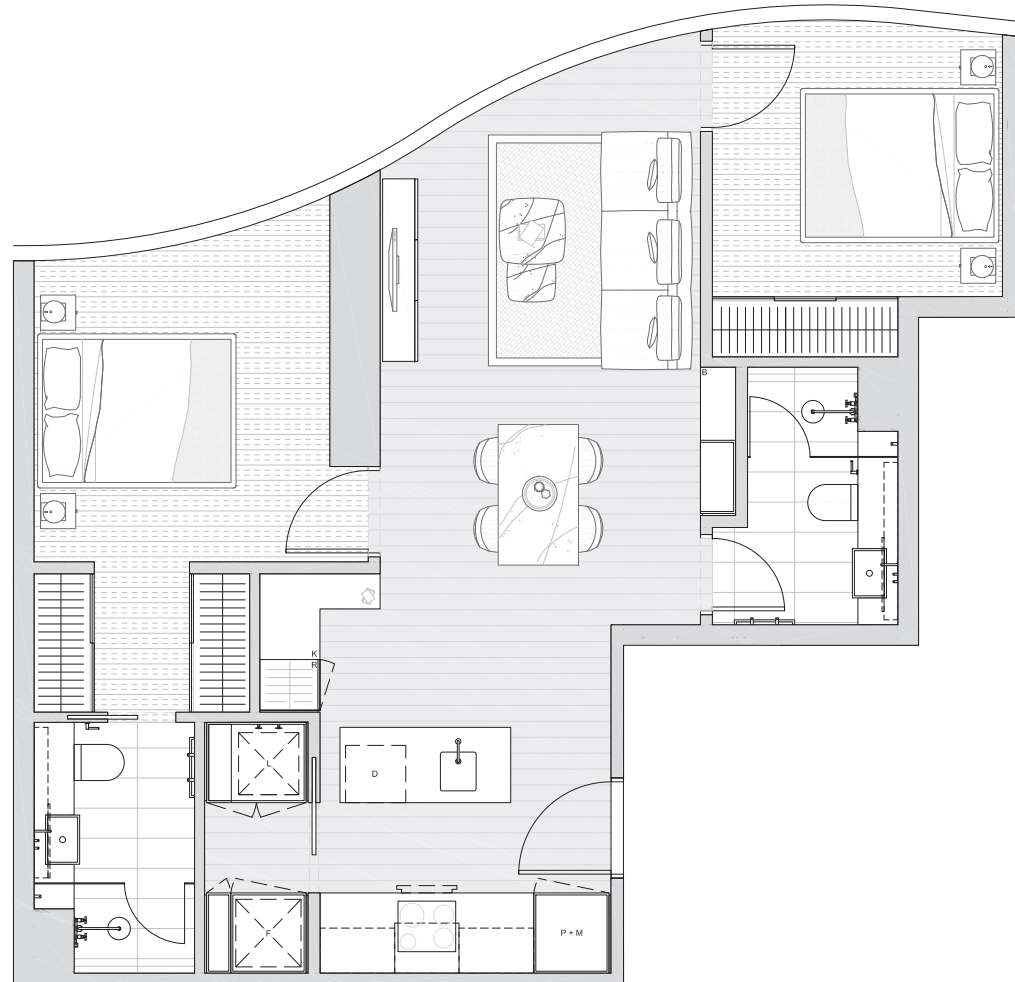


LOW RISE, LEVEL 19-39
MID RISE, LEVEL 41-50



Setia ELENBERG FRASER

- B BAR
- D DISHWASHER
- F FRIDGE
- L LAUNDRY
- K KEY DROP
- M MICROWAVE
- P PANTRY
- R ROBE
- S STUDY



DISCLAIMER

Drawing not to scale. Disclaimer: Whilst we endeavour to ensure the contents of these plans are correct at the time of printing, the information contained is to be used as a guide only. Furnishings and loose floor coverings are for illustrative purposes only, are not shown to scale nor included in the stated price (unless expressly stated). All areas provided are approximate only and provided in accordance with the method of measurements for residential property by the property council of Australia. The plans were completed prior to completion of the building, therefore the design & dimensions are subject to change without notice in accordance with the provision of contract of sale.

UNO

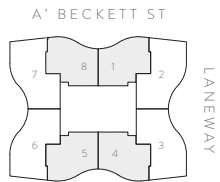
111 A'BECKETT STREET
MELBOURNE

TYPE C2

2 BEDROOM
2 BATHROOM
1 STUDY

TOTAL AREA **83M²**

5101, 5104, 5105, 5108, 5201, 5204, 5205, 5208, 5301, 5304, 5305, 5308, 5401, 5404, 5405, 5408, 5501, 5504, 5505, 5508, 5601, 5604, 5605, 5608, 5701, 5704, 5705, 5708, 5801, 5804, 5805, 5808, 5901, 5904, 5905, 5908, 6001, 6004, 6005, 6008, 6101, 6104, 6105, 6108, 6201, 6204, 6205, 6208, 6301, 6304, 6305, 6308

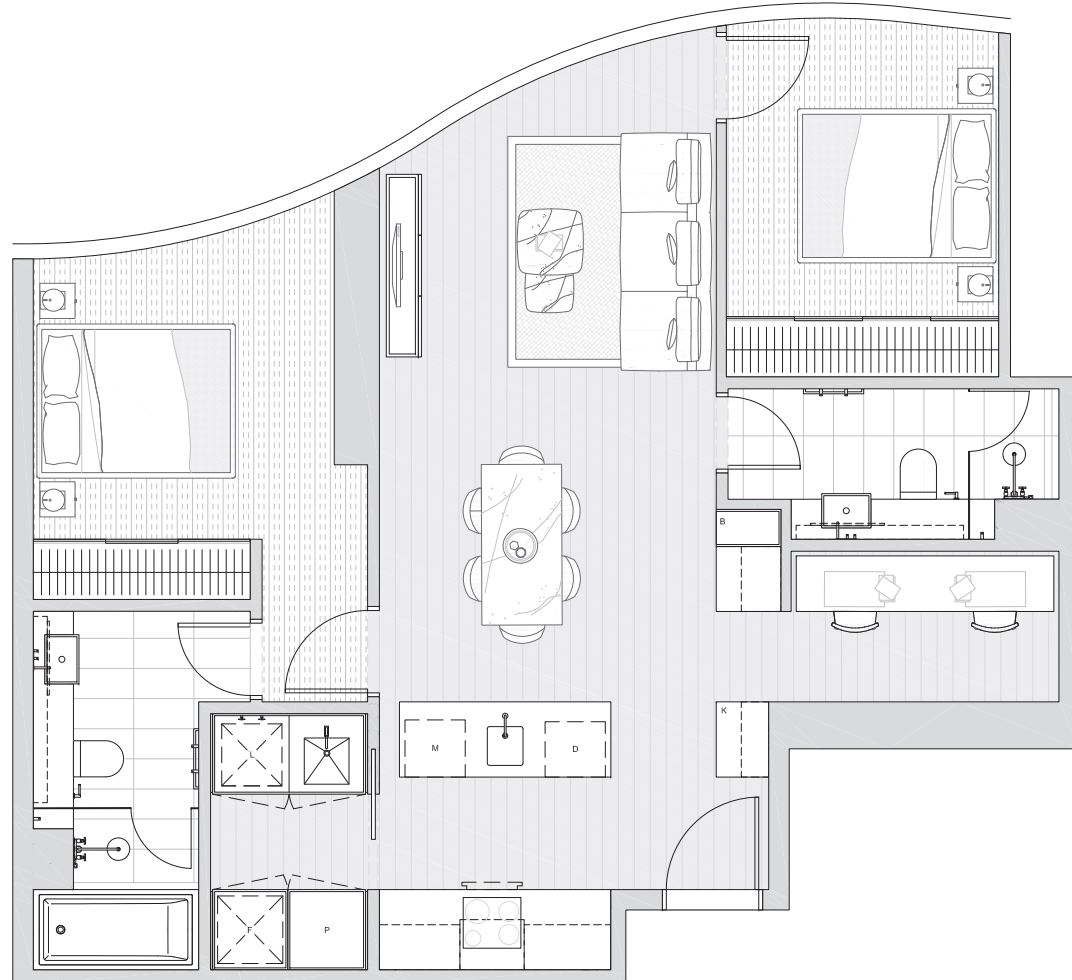


HIGH RISE, LEVEL 51-63



Setia ELENBERG FRASER

- B BAR
- D DISHWASHER
- F FRIDGE
- L LAUNDRY
- K KEY DROP
- M MICROWAVE
- P PANTRY
- R ROBE
- S STUDY



DISCLAIMER

Drawing not to scale. Disclaimer: Whilst we endeavour to ensure the contents of these plans are correct at the time of printing, the information contained is to be used as a guide only. Furnishings and loose floor coverings are for illustrative purposes only, are not shown to scale nor included in the stated price (unless expressly stated). All areas provided are approximate only and provided in accordance with the method of measurements for residential property by the property council of Australia. The plans were completed prior to completion of the building, therefore the design & dimensions are subject to change without notice in accordance with the provision of contract of sale.

UNO

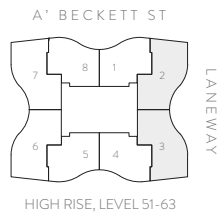
111 A'BECKETT STREET
MELBOURNE

TYPE D1

3 BEDROOM
2 BATHROOM

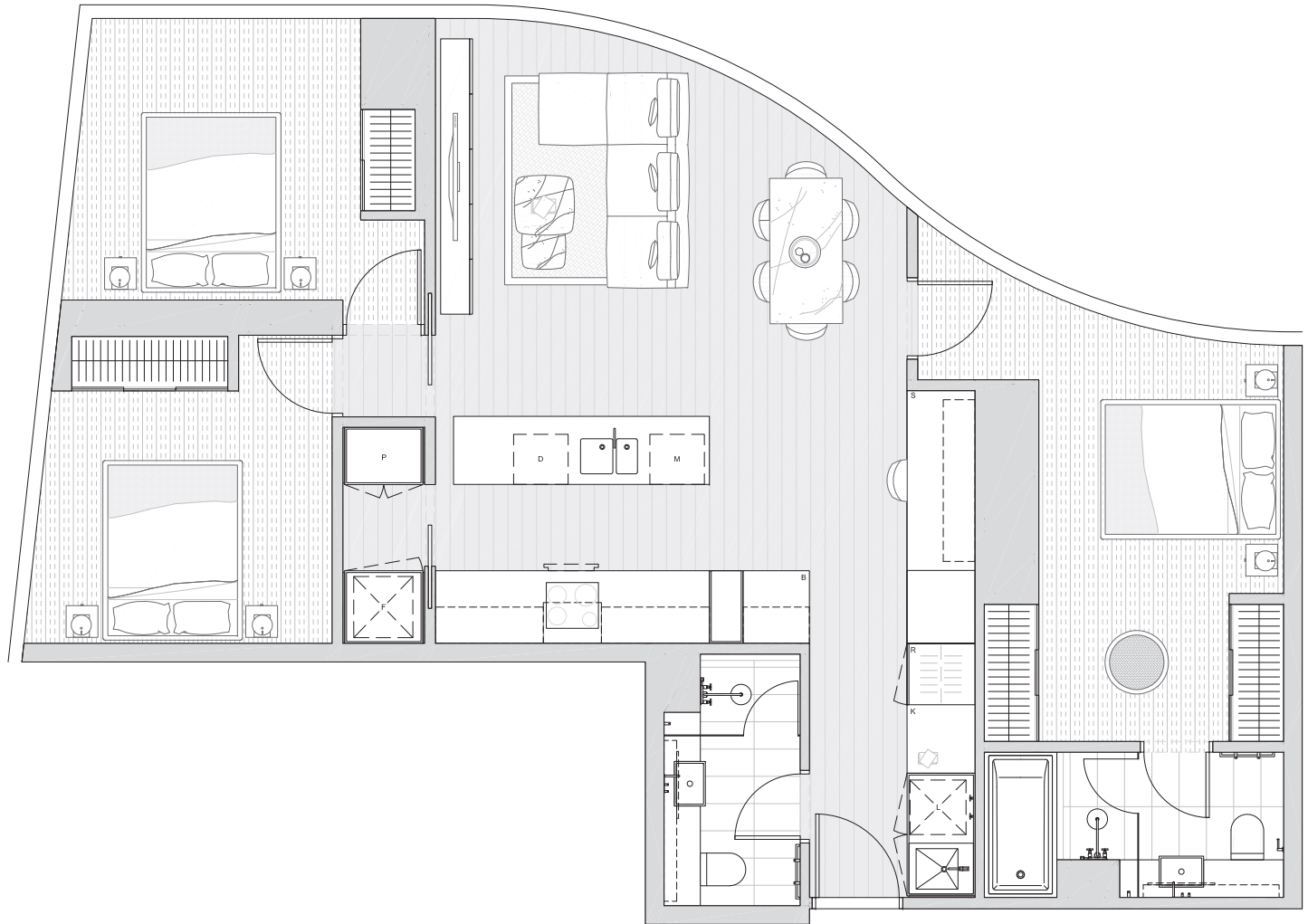
TOTAL AREA **103M²**

5102, 5103, 5202, 5203, 5302, 5303, 5402, 5403, 5502, 5503,
5602, 5603, 5702, 5703, 5802, 5803, 5902, 5903, 6002, 6003,
6102, 6103, 6202, 6203, 6302, 6303



Setia ELENBERG FRASER

- B BAR
- D DISHWASHER
- F FRIDGE
- L LAUNDRY
- K KEY DROP
- M MICROWAVE
- P PANTRY
- R ROBE
- S STUDY



DISCLAIMER

Drawing not to scale. Disclaimer: Whilst we endeavour to ensure the contents of these plans are correct at the time of printing, the information contained is to be used as a guide only. Furnishings and loose floor coverings are for illustrative purposes only, are not shown to scale nor included in the stated price (unless expressly stated). All areas provided are approximate only and provided in accordance with the method of measurements for residential property by the property council of Australia. The plans were completed prior to completion of the building, therefore the design & dimensions are subject to change without notice in accordance with the provision of contract of sale.

UNO

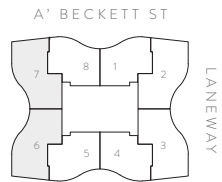
111 A'BECKETT STREET
MELBOURNE

TYPE D2

3 BEDROOM
2 BATHROOM

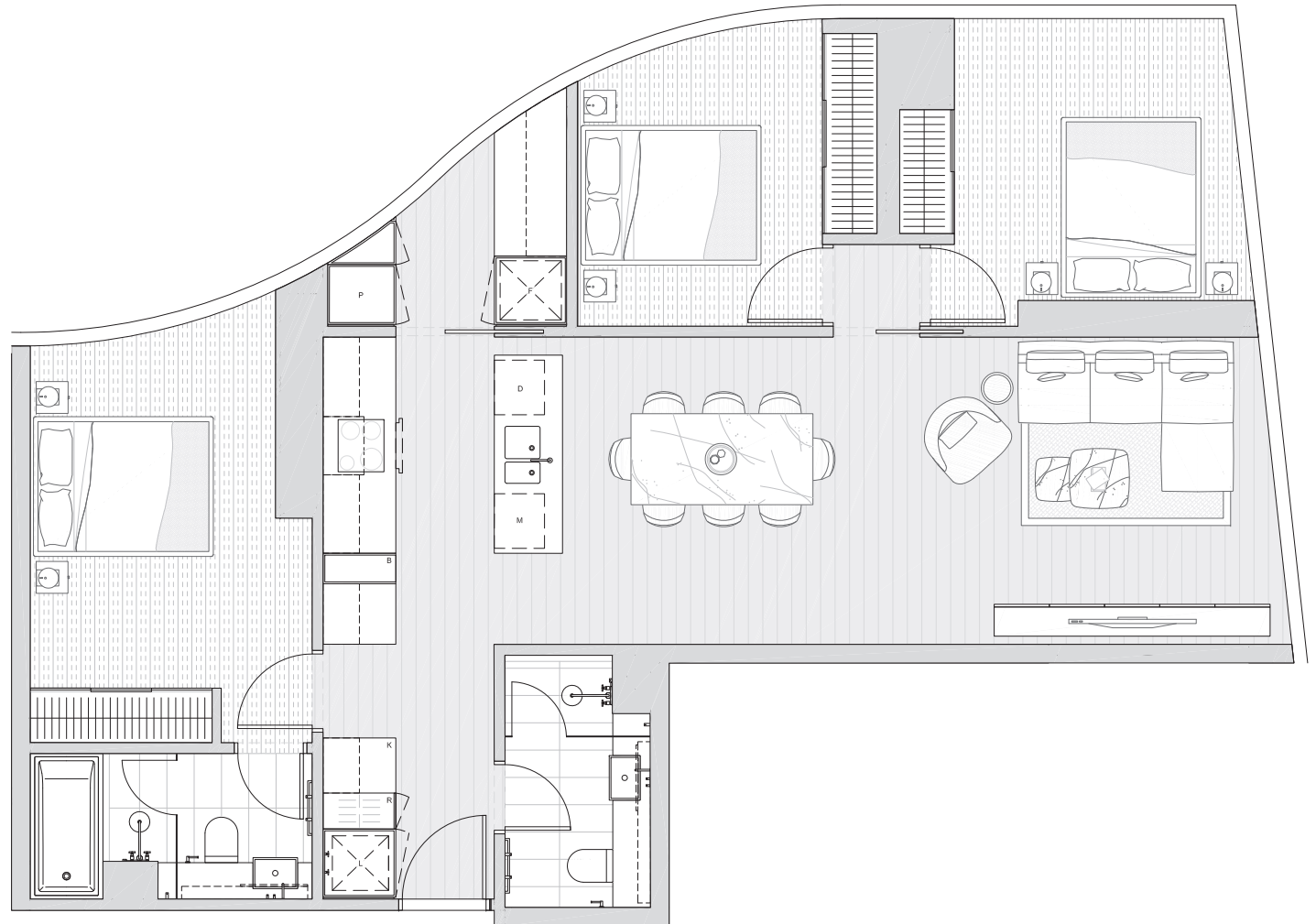
TOTAL AREA **103M²**

5106, 5107, 5206, 5207, 5306, 5307, 5406, 5407, 5506, 5507,
5606, 5607, 5706, 5707, 5806, 5807, 5906, 5907, 6006, 6007,
6106, 6107, 6206, 6207, 6306, 6307



Setia ELENBERG FRASER

- B BAR
- D DISHWASHER
- F FRIDGE
- L LAUNDRY
- K KEY DROP
- M MICROWAVE
- P PANTRY
- R ROBE
- S STUDY



DISCLAIMER

Drawing not to scale. Disclaimer: Whilst we endeavour to ensure the contents of these plans are correct at the time of printing, the information contained is to be used as a guide only. Furnishings and loose floor coverings are for illustrative purposes only, are not shown to scale nor included in the stated price (unless expressly stated). All areas provided are approximate only and provided in accordance with the method of measurements for residential property by the property council of Australia. The plans were completed prior to completion of the building, therefore the design & dimensions are subject to change without notice in accordance with the provision of contract of sale.



111 A'BECKETT STREET
MELBOURNE

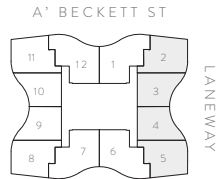
TYPE D3 (COMBO UNIT)

3 BEDROOM
2 BATHROOM

TOTAL AREA **111M²**

2002 & 2003, 2102 & 2103, 2202 & 2203, 2302 & 2303, 2402 & 2403, 2502 & 2503, 2602 & 2603, 2702 & 2703, 2802 & 2803, 2902 & 2903, 3002 & 3003, 3102 & 3103, 3202 & 3203, 3302 & 3303, 3402 & 3403, 3502 & 3503, 3602 & 3603, 3702 & 3703, 3802 & 3803, 3902 & 3903, 2004 & 2005, 2104 & 2105, 2204 & 2205, 2304 & 2305, 2404 & 2405, 2504 & 2505, 2604 & 2605, 2704 & 2705, 2804 & 2805, 2904 & 2905, 3004 & 3005, 3104 & 3105, 3204 & 3205, 3304 & 3305, 3404 & 3405, 3504 & 3505, 3604 & 3605, 3704 & 3705, 3804 & 3805, 3904 & 3905

4102 & 4103, 4202 & 4203, 4302 & 4303, 4402 & 4403, 4502 & 4503, 4602 & 4603, 4702 & 4703, 4802 & 4803, 4902 & 4903, 5002 & 5003, 4104 & 4105, 4204 & 4205, 4304 & 4305, 4404 & 4405, 4504 & 4505, 4604 & 4605, 4704 & 4705, 4804 & 4805, 4904 & 4905, 5004 & 5005

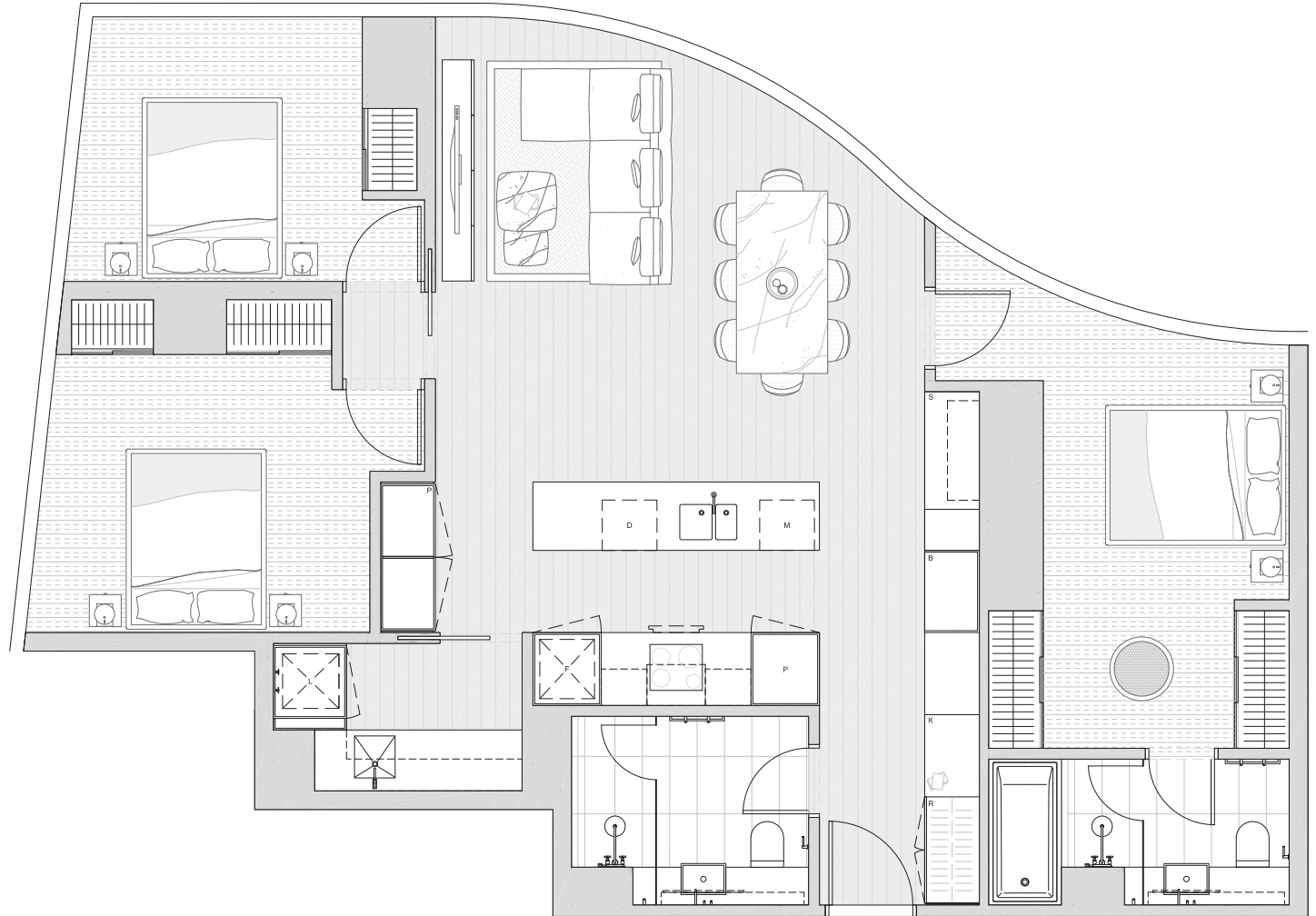


LOW RISE, LEVEL 19-39
MID RISE, LEVEL 41-50



Setia ELENBERG FRASER

- B BAR
- D DISHWASHER
- F FRIDGE
- L LAUNDRY
- K KEY DROP
- M MICROWAVE
- P PANTRY
- R ROBE
- S STUDY



DISCLAIMER

Drawing not to scale. Disclaimer: Whilst we endeavour to ensure the contents of these plans are correct at the time of printing, the information contained is to be used as a guide only. Furnishings and loose floor coverings are for illustrative purposes only, are not shown to scale nor included in the stated price (unless expressly stated). All areas provided are approximate only and provided in accordance with the method of measurements for residential property by the property council of Australia. The plans were completed prior to completion of the building, therefore the design & dimensions are subject to change without notice in accordance with the provision of contract of sale.



111 A'BECKETT STREET
MELBOURNE

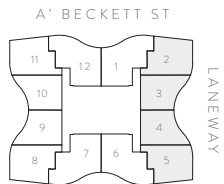
TYPE D4 (COMBO UNIT)

3 BEDROOM
2 BATHROOM
1 STUDY

TOTAL AREA **111M²**

2002 & 2003, 2102 & 2103, 2202 & 2203, 2302 & 2303, 2402 & 2403, 2502 & 2503, 2602 & 2603, 2702 & 2703, 2802 & 2803, 2902 & 2903, 3002 & 3003, 3102 & 3103, 3202 & 3203, 3302 & 3303, 3402 & 3403, 3502 & 3503, 3602 & 3603, 3702 & 3703, 3802 & 3803, 3902 & 3903, 2004 & 2005, 2104 & 2105, 2204 & 2205, 2304 & 2305, 2404 & 2405, 2504 & 2505, 2604 & 2605, 2704 & 2705, 2804 & 2805, 2904 & 2905, 3004 & 3005, 3104 & 3105, 3204 & 3205, 3304 & 3305, 3404 & 3405, 3504 & 3505, 3604 & 3605, 3704 & 3705, 3804 & 3805, 3904 & 3905

4102 & 4103, 4202 & 4203, 4302 & 4303, 4402 & 4403, 4502 & 4503, 4602 & 4603, 4702 & 4703, 4802 & 4803, 4902 & 4903, 5002 & 5003, 4104 & 4105, 4204 & 4205, 4304 & 4305, 4404 & 4405, 4504 & 4505, 4604 & 4605, 4704 & 4705, 4804 & 4805, 4904 & 4905, 5004 & 5005

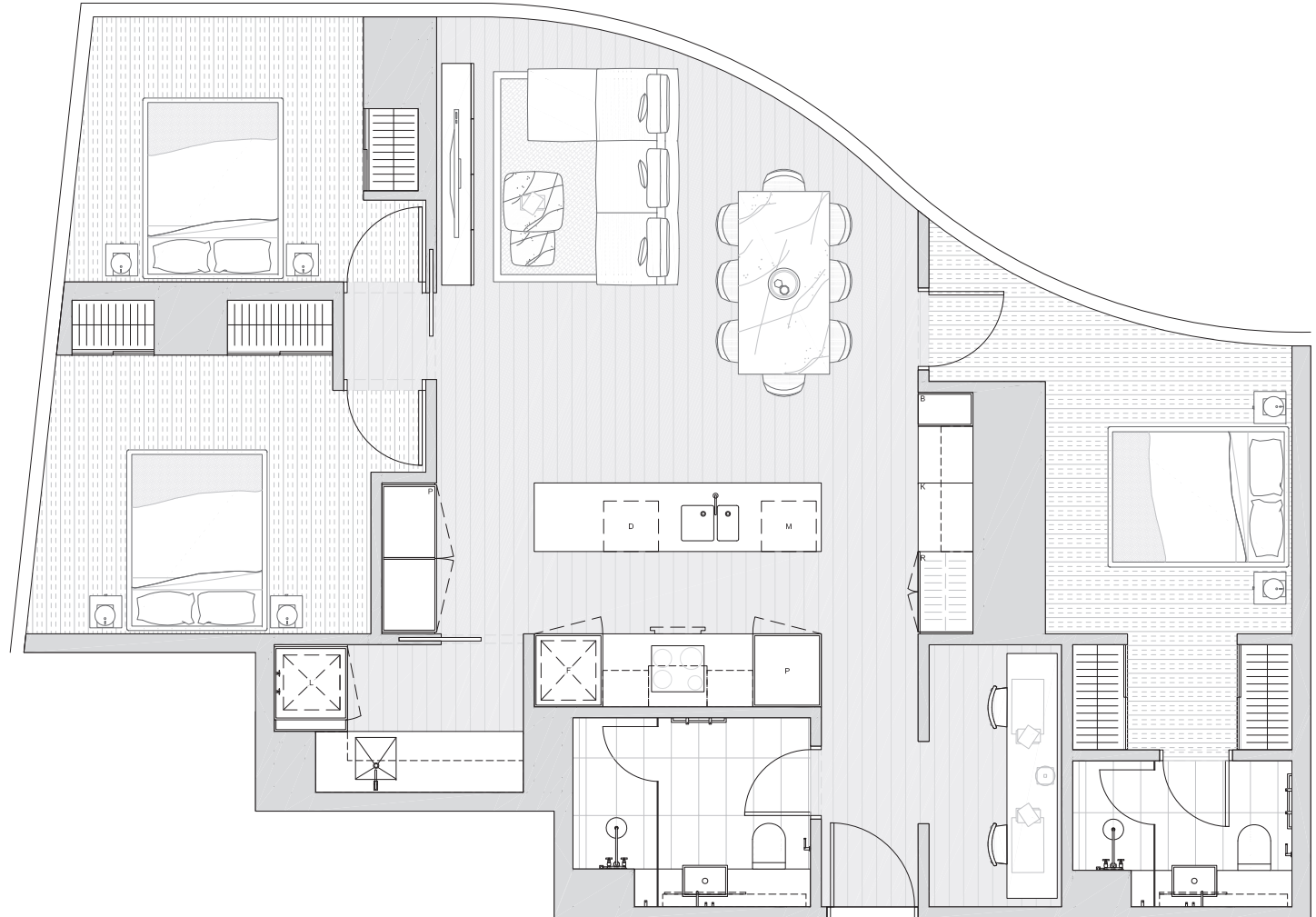


LOW RISE, LEVEL 19-39
MID RISE, LEVEL 41-50



Setia ELENBERG FRASER

- B BAR
- D DISHWASHER
- F FRIDGE
- L LAUNDRY
- K KEY DROP
- M MICROWAVE
- P PANTRY
- R ROBE
- S STUDY



DISCLAIMER

Drawing not to scale. Disclaimer: Whilst we endeavour to ensure the contents of these plans are correct at the time of printing, the information contained is to be used as a guide only. Furnishings and loose floor coverings are for illustrative purposes only, are not shown to scale nor included in the stated price (unless expressly stated). All areas provided are approximate only and provided in accordance with the method of measurements for residential property by the property council of Australia. The plans were completed prior to completion of the building, therefore the design & dimensions are subject to change without notice in accordance with the provision of contract of sale.