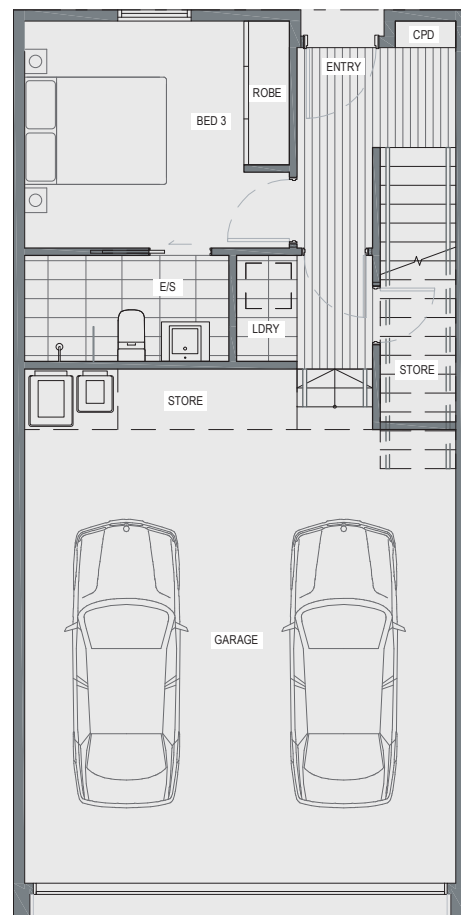




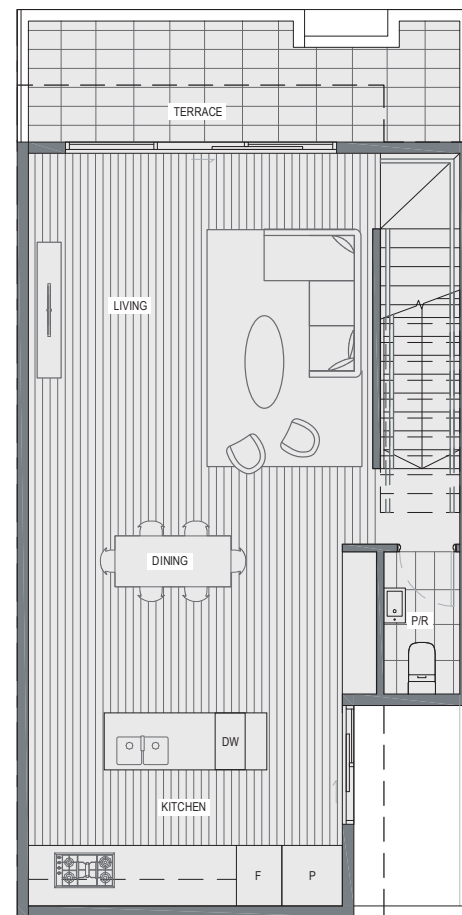
## Dwelling Type CC1



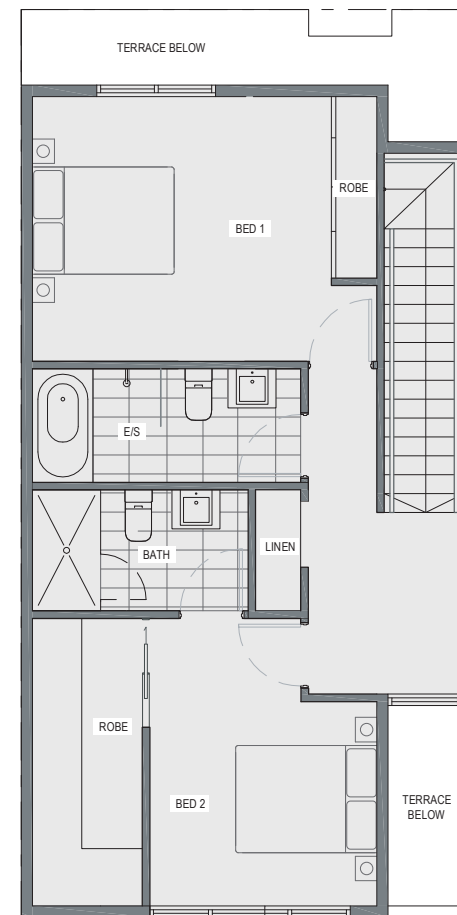
Ground level	26.4m <sup>2</sup>
First level	57.1m <sup>2</sup>
Second level	61.9m <sup>2</sup>
Terrace	14.4m <sup>2</sup>
Garage	43.5m <sup>2</sup>
<b>Total area</b>	<b>203.3m<sup>2</sup></b>



Ground



Level 1



Level 2

SCALE 1:50 @ A3



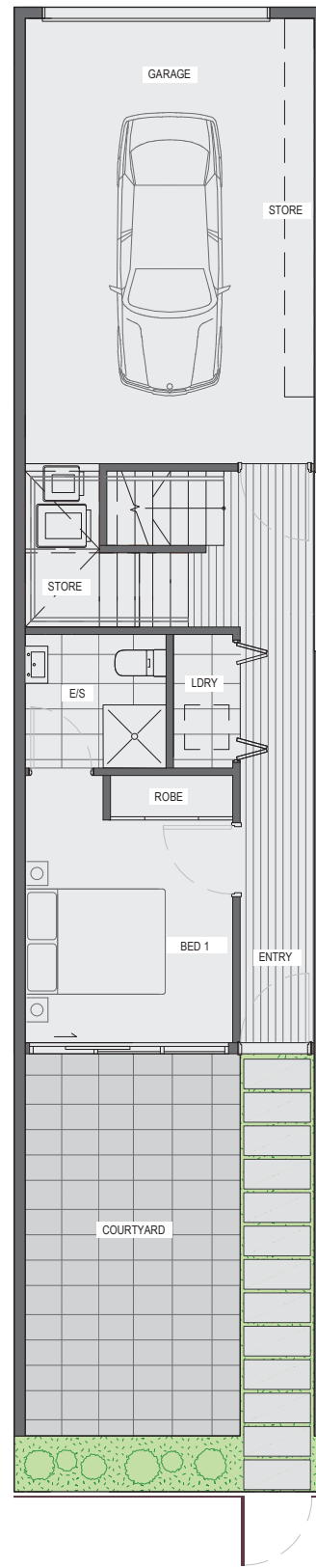
\*Layouts may not comply with building regulations or other regulatory requirements. The information contained in this schedule is believed to be correct at the time of printing. Areas are generally measured in accordance with the Property Council of Australia Method of Measurement.



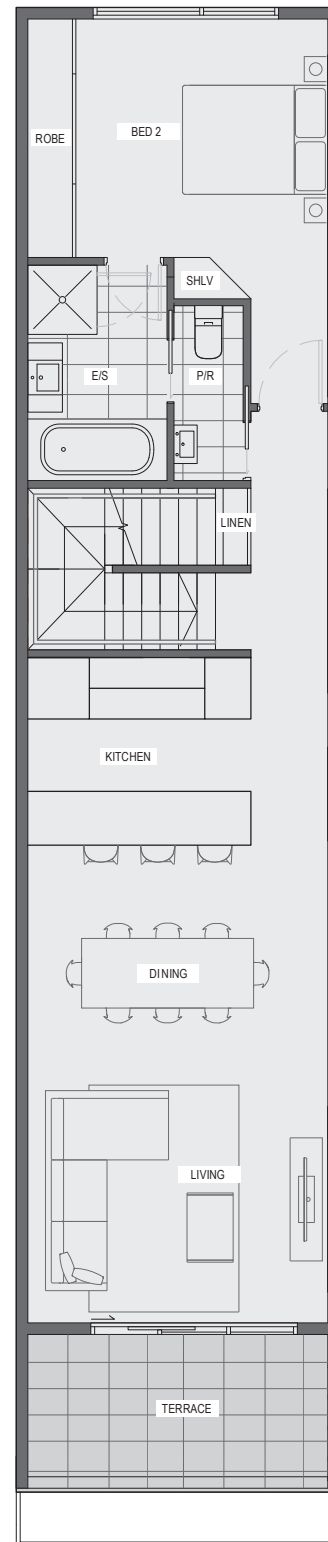
### Dwelling Type DD

2    
 2.5    
 1

Ground level	33m <sup>2</sup>
First level	72.5m <sup>2</sup>
Courtyard	25m <sup>2</sup>
Terrace	8.4m <sup>2</sup>
Garage	26m <sup>2</sup>
<b>Total area</b>	<b>164.9m<sup>2</sup></b>



**Ground**



**Level 1**

SCALE 1:50 @ A3

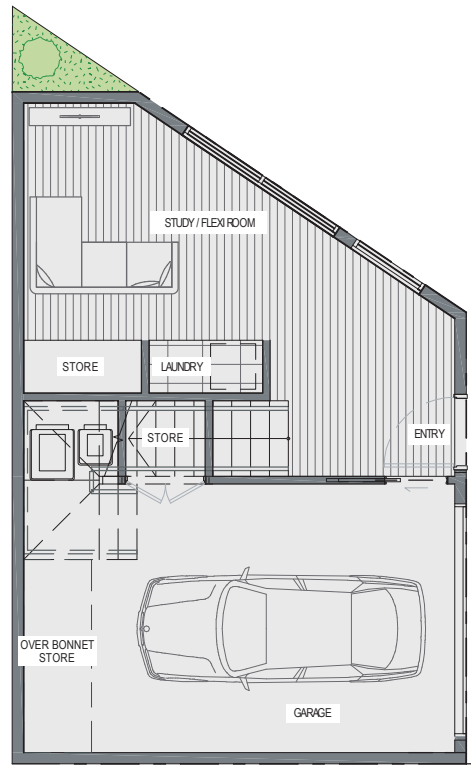
\*Layouts may not comply with building regulations or other regulatory requirements. The information contained in this schedule is believed to be correct at the time of printing. Areas are generally measured in accordance with the Property Council of Australia Method of Measurement.



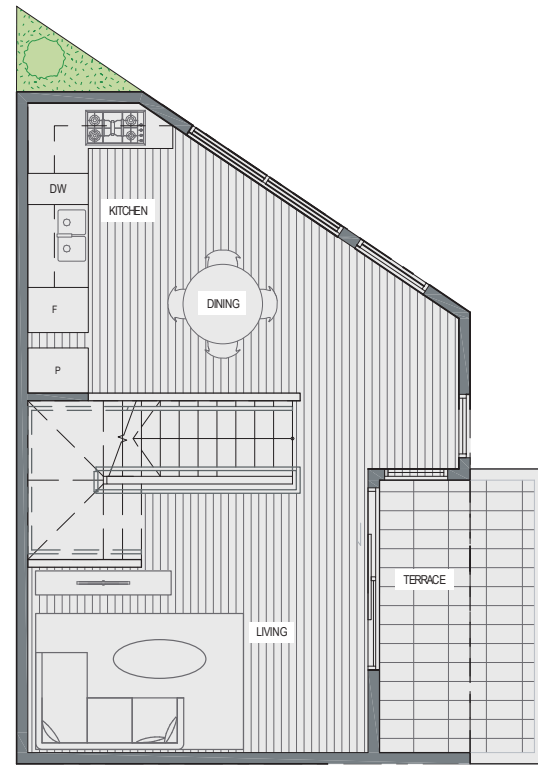
### Dwelling Type GG



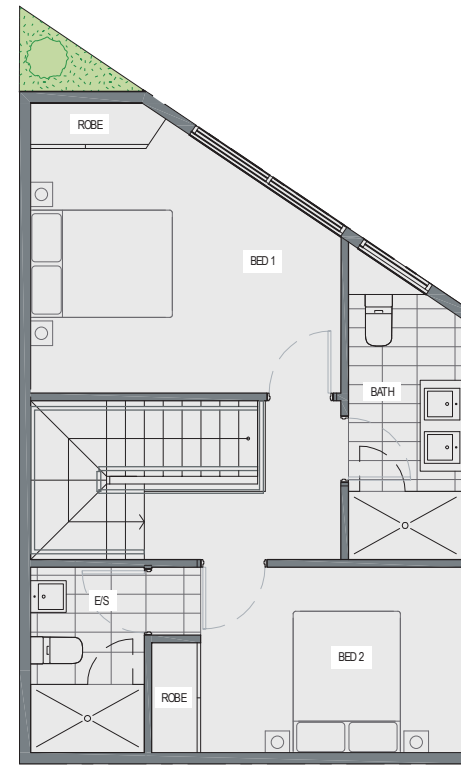
Ground level	22.0m <sup>2</sup>
First level	42.7m <sup>2</sup>
Second level	47.0m <sup>2</sup>
Terrace	8.2m <sup>2</sup>
Garage	25.0m <sup>2</sup>
<b>Total area</b>	<b>144.9m<sup>2</sup></b>



Ground



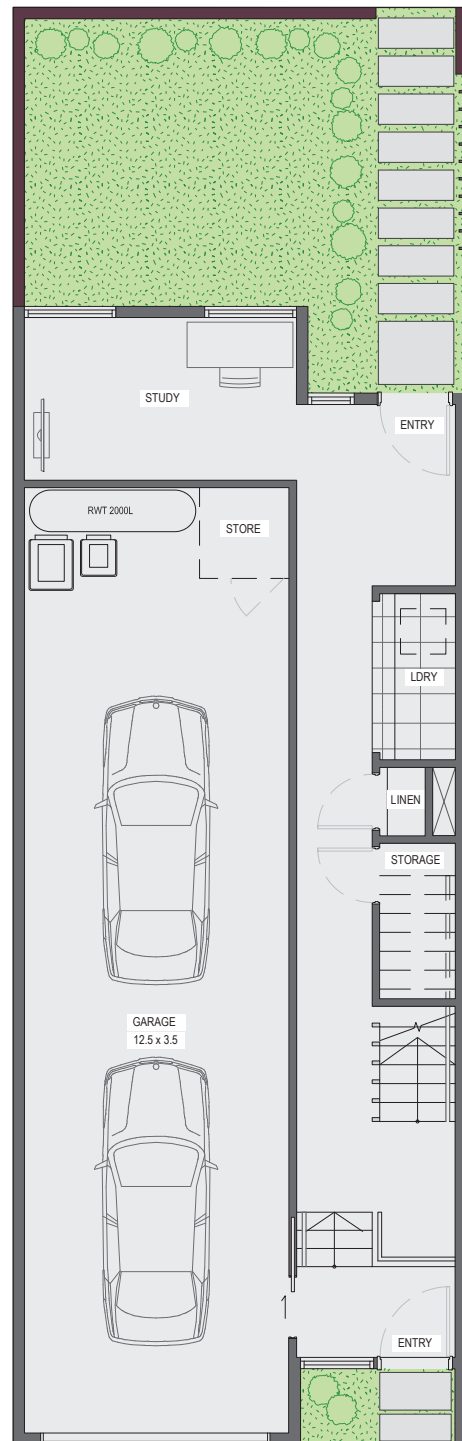
Level 1



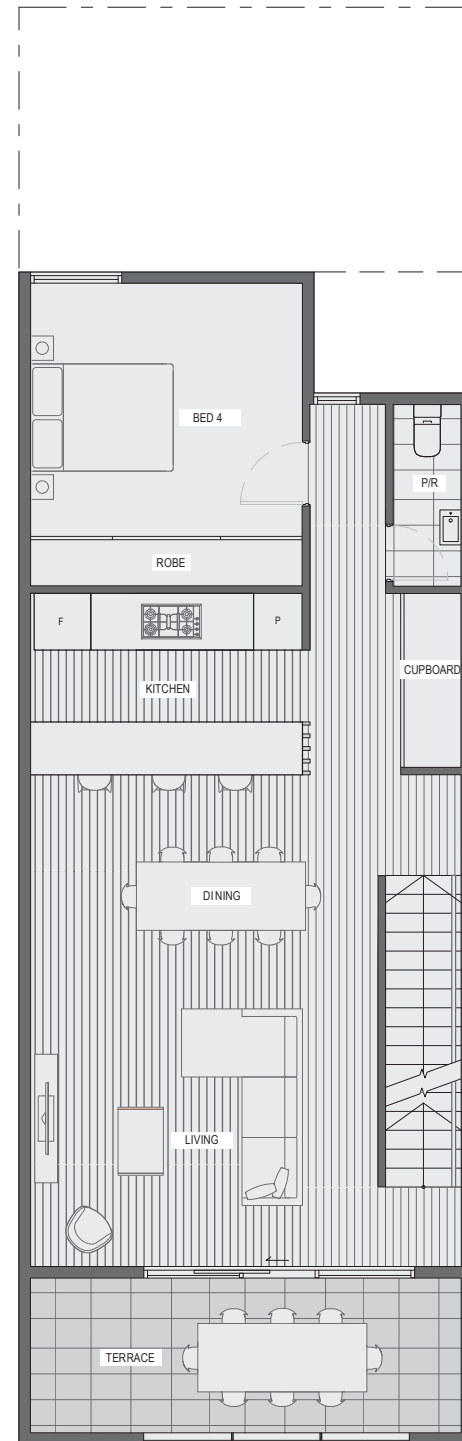
Level 2

SCALE 1:50 @ A3  
0 1 2 4

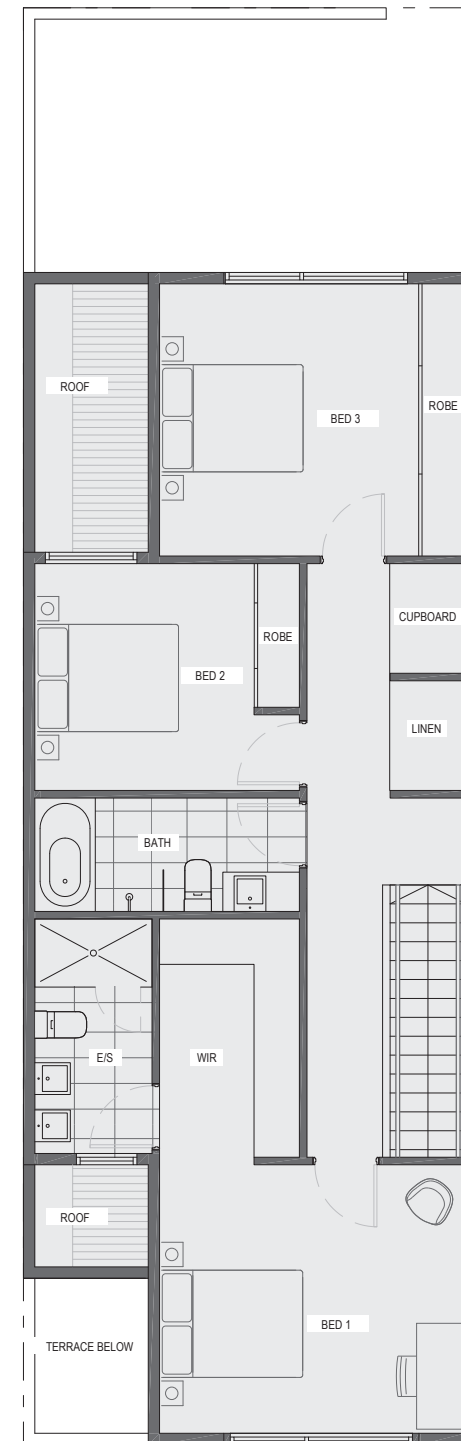
\*Layouts may not comply with building regulations or other regulatory requirements. The information contained in this schedule is believed to be correct at the time of printing. Areas are generally measured in accordance with the Property Council of Australia Method of Measurement.



**Ground**



**Level 1**



**Level 2**

## Dwelling Type FF



Ground level	39.5m <sup>2</sup>
First level	76.5m <sup>2</sup>
Second level	80.8m <sup>2</sup>
Terrace	12.2m <sup>2</sup>
Garage	46.3m <sup>2</sup>
<b>Total area</b>	<b>255.3m<sup>2</sup></b>

SCALE 1:50 @ A3  
0 1 2 4

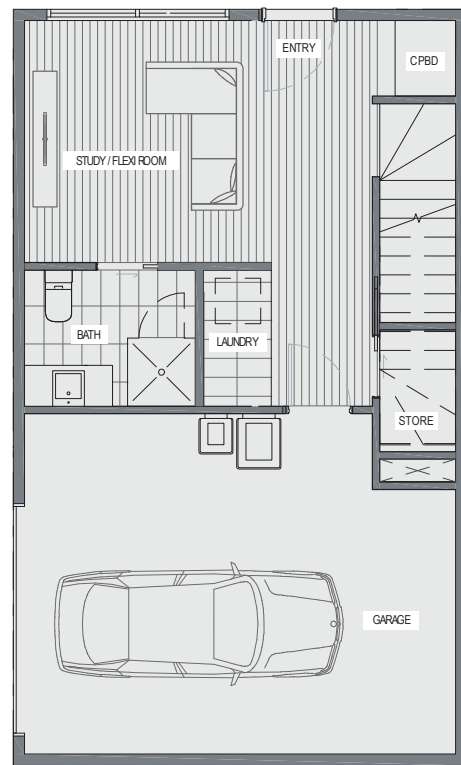
\*Layouts may not comply with building regulations or other regulatory requirements. The information contained in this schedule is believed to be correct at the time of printing. Areas are generally measured in accordance with the Property Council of Australia Method of Measurement.



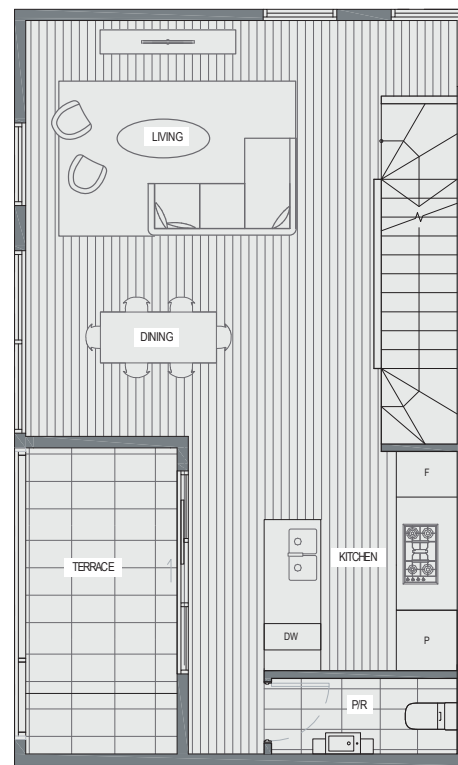
### Dwelling Type JJ

2.5   3.5   1

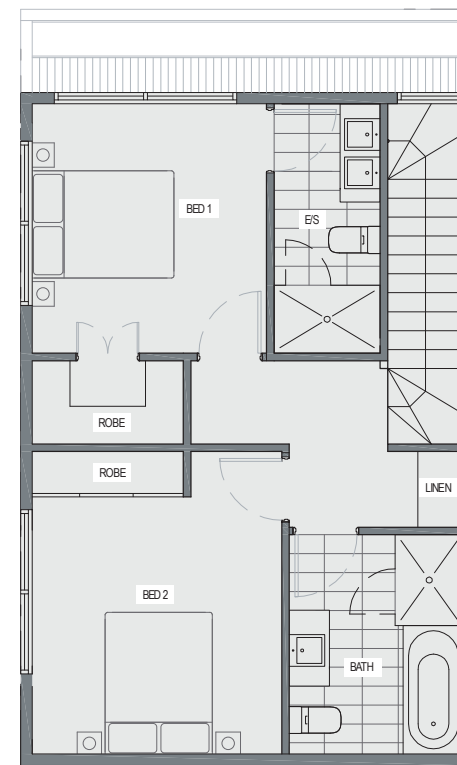
Ground level	33.3m <sup>2</sup>
First level	51.3m <sup>2</sup>
Second level	53.4m <sup>2</sup>
Terrace	8.6m <sup>2</sup>
Garage	26.6m <sup>2</sup>
<b>Total area</b>	<b>173.2m<sup>2</sup></b>



**Ground**



**Level 1**



**Level 2**

SCALE 1:50 @ A3  
0 1 2 4

\*Layouts may not comply with building regulations or other regulatory requirements. The information contained in this schedule is believed to be correct at the time of printing. Areas are generally measured in accordance with the Property Council of Australia Method of Measurement.