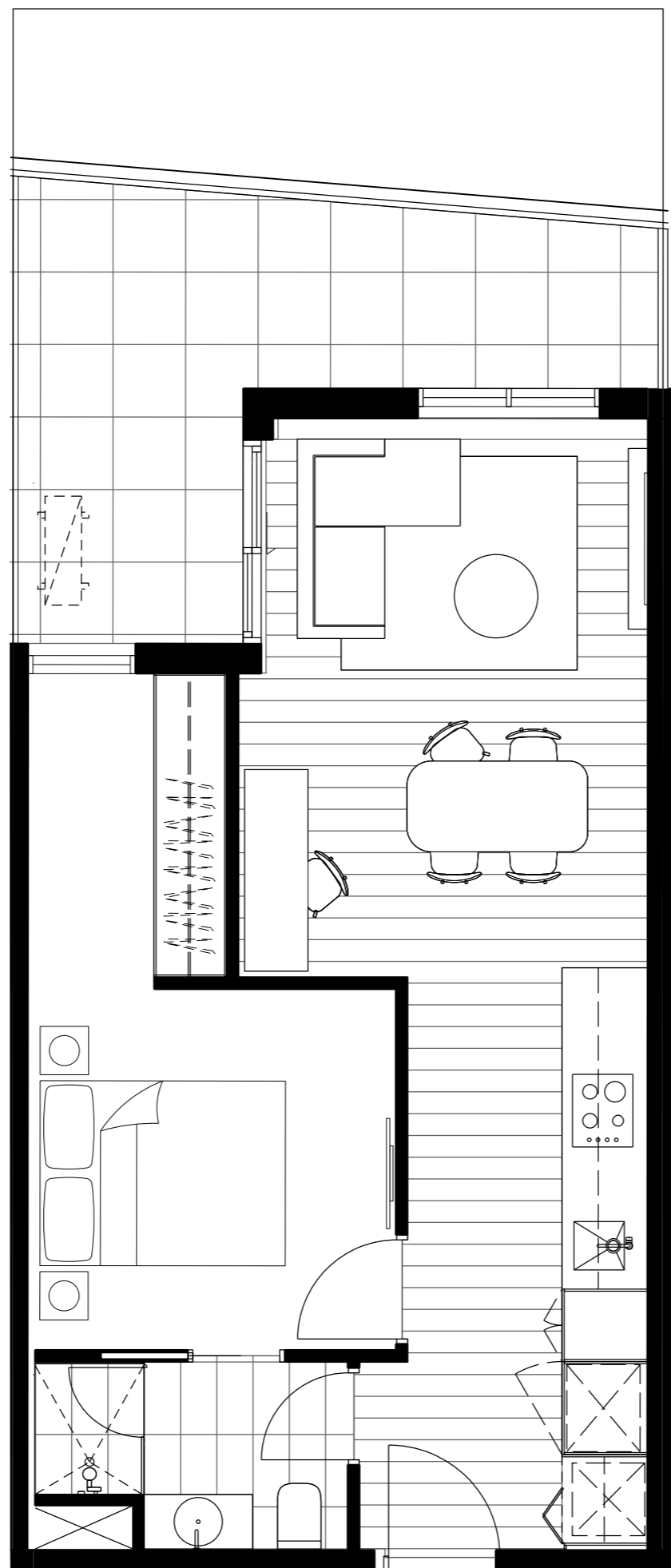
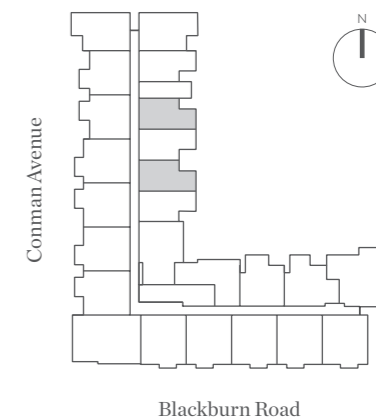


M12

RESIDENCES



Apt. No. 119, 121, 220, 222, 320, 322, 420, 422, 520, 522, 620, 622, 720, 722, 820, 822, 920, 922, 1020, 1022

Type A02a

1 Bedroom

1 Bathroom

Internal 47-48m²

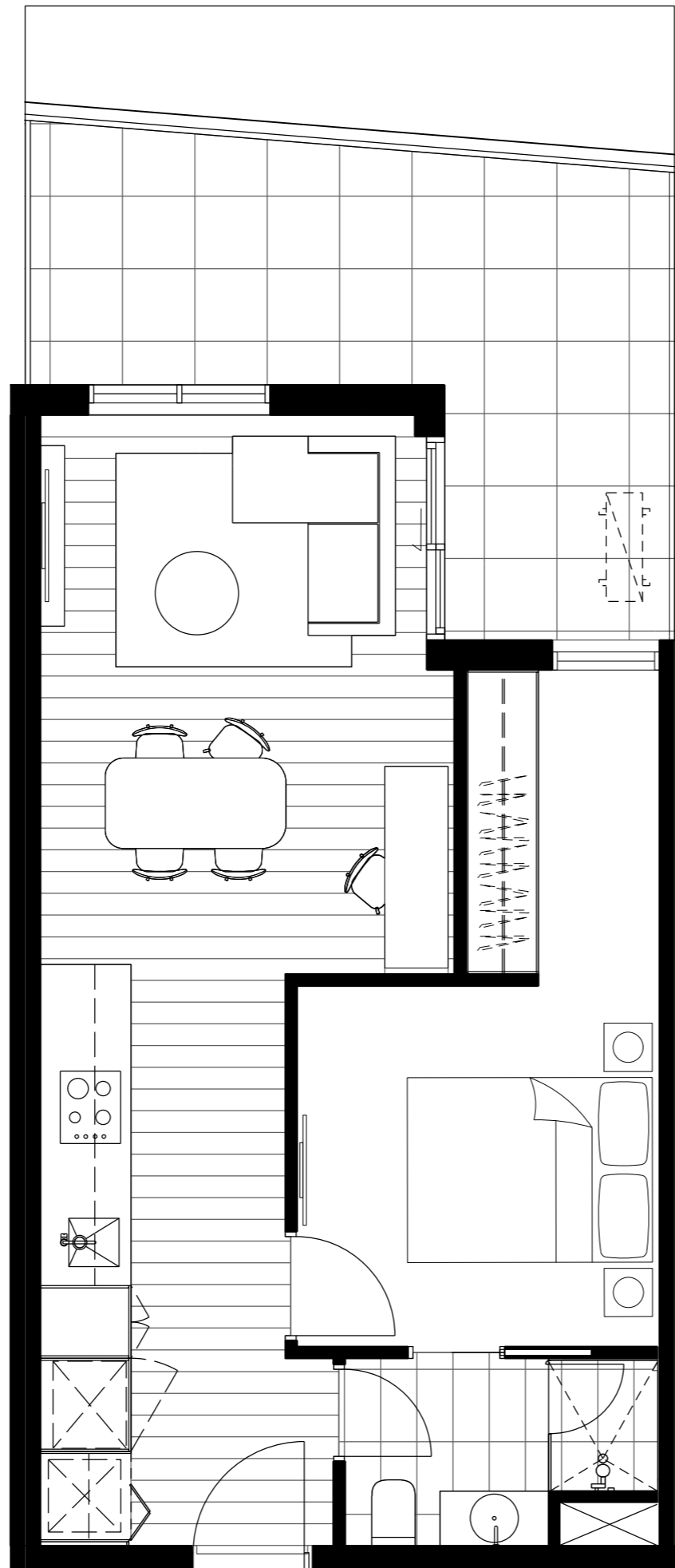
External 13-26m²

Total 61-73m²

M=CITY
MONASH

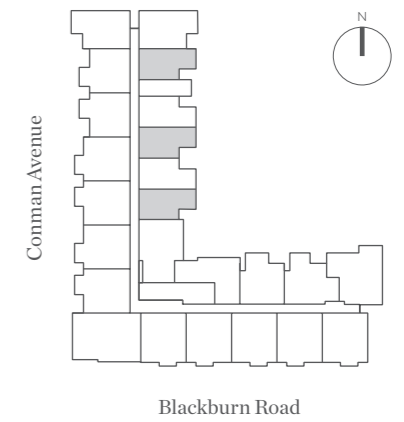
schiavetto SARACENO GROUP

DISCLAIMER Any dimensions, layout, design features, views, areas, photographs and artist's impressions are for presentation purposes and indicative only. They are also subject to change in accordance with the Contract of Sale. All internal / external furniture (including study desks) and white goods are NOT included. All area calculations are based on the Property Council of Australia method of measurement guidelines and are estimates only. Any dimensions or areas may differ from survey areas due to different methods of measurement. External areas include planter and tiled areas. Final product may differ from that described. Purchasers should check the plans and specifications included in the contract of sale carefully prior to signing the contract of sale. Scale: not to scale.



M12

RESIDENCES



**Apt. No. 118, 120, 221, 122, 123,
219, 223, 319, 321, 323, 419, 421,
423, 519, 521, 523, 619, 621, 623,
719, 721, 723, 819, 820, 823, 916,
921, 923, 1019, 1021, 1023**

Type A02a-M

1 Bedroom

1 Bathroom

Internal 47-48m²

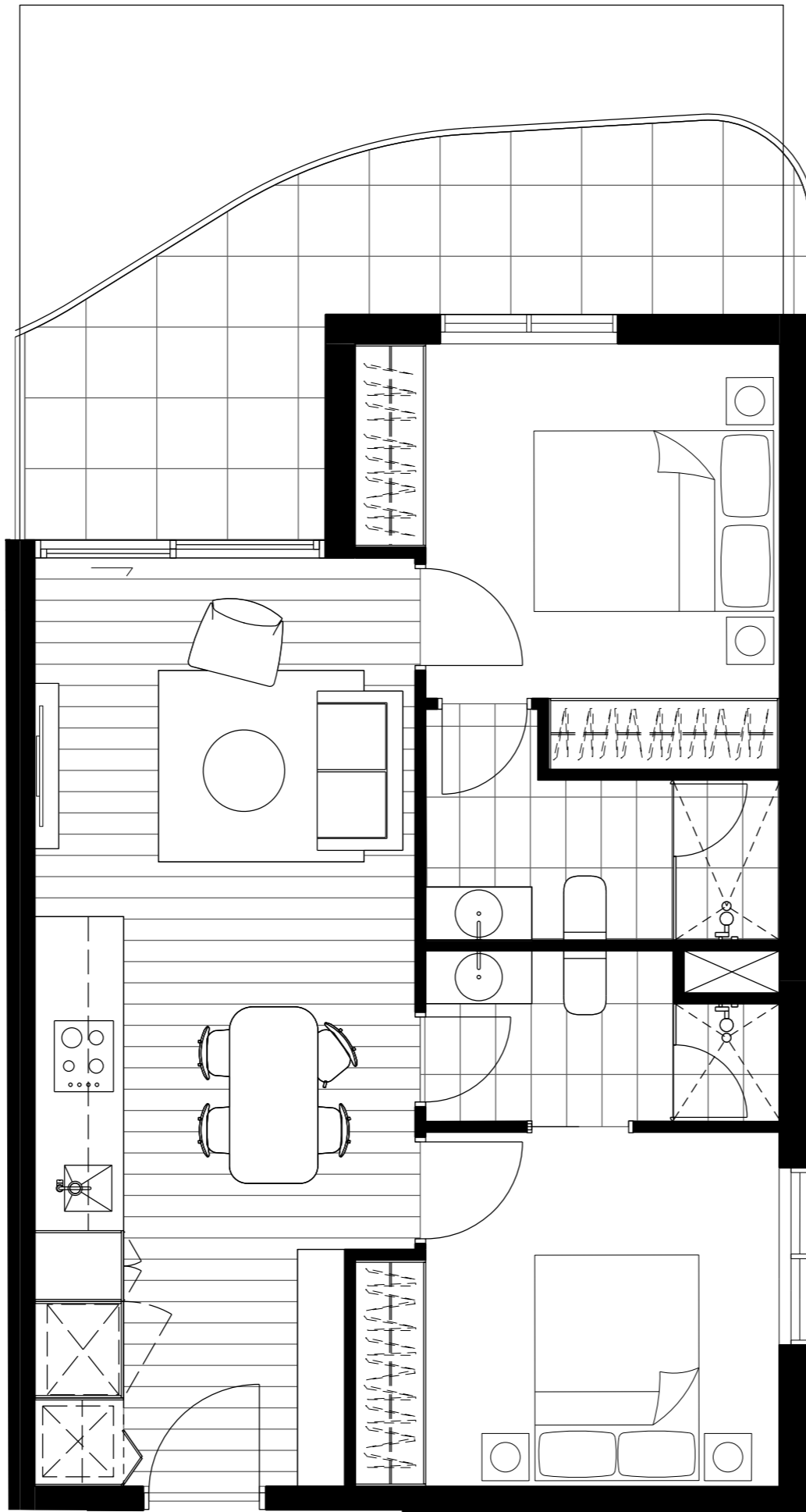
External 10-28m²

Total 58-76m²

M=CITY
MONASH

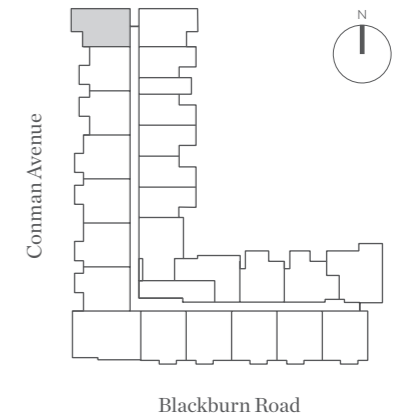
schiavetto SARACENO GROUP

DISCLAIMER Any dimensions, layout, design features, views, areas, photographs and artist's impressions are for presentation purposes and indicative only. They are also subject to change in accordance with the Contract of Sale. All internal / external furniture (including study desks) and white goods are NOT included. All area calculations are based on the Property Council of Australia method of measurement guidelines and are estimates only. Any dimensions or areas may differ from survey areas due to different methods of measurement. External areas include planter and tiled areas. Final product may differ from that described. Purchasers should check the plans and specifications included in the contract of sale carefully prior to signing the contract of sale. Scale: not to scale.



M12

RESIDENCES



Apt. No. 116, 217, 317, 417, 517, 617, 717, 817, 917, 1017

Type B02

2 Bedroom

2 Bathroom

Internal 62m²

External 13-31m²

Total 75-93m²

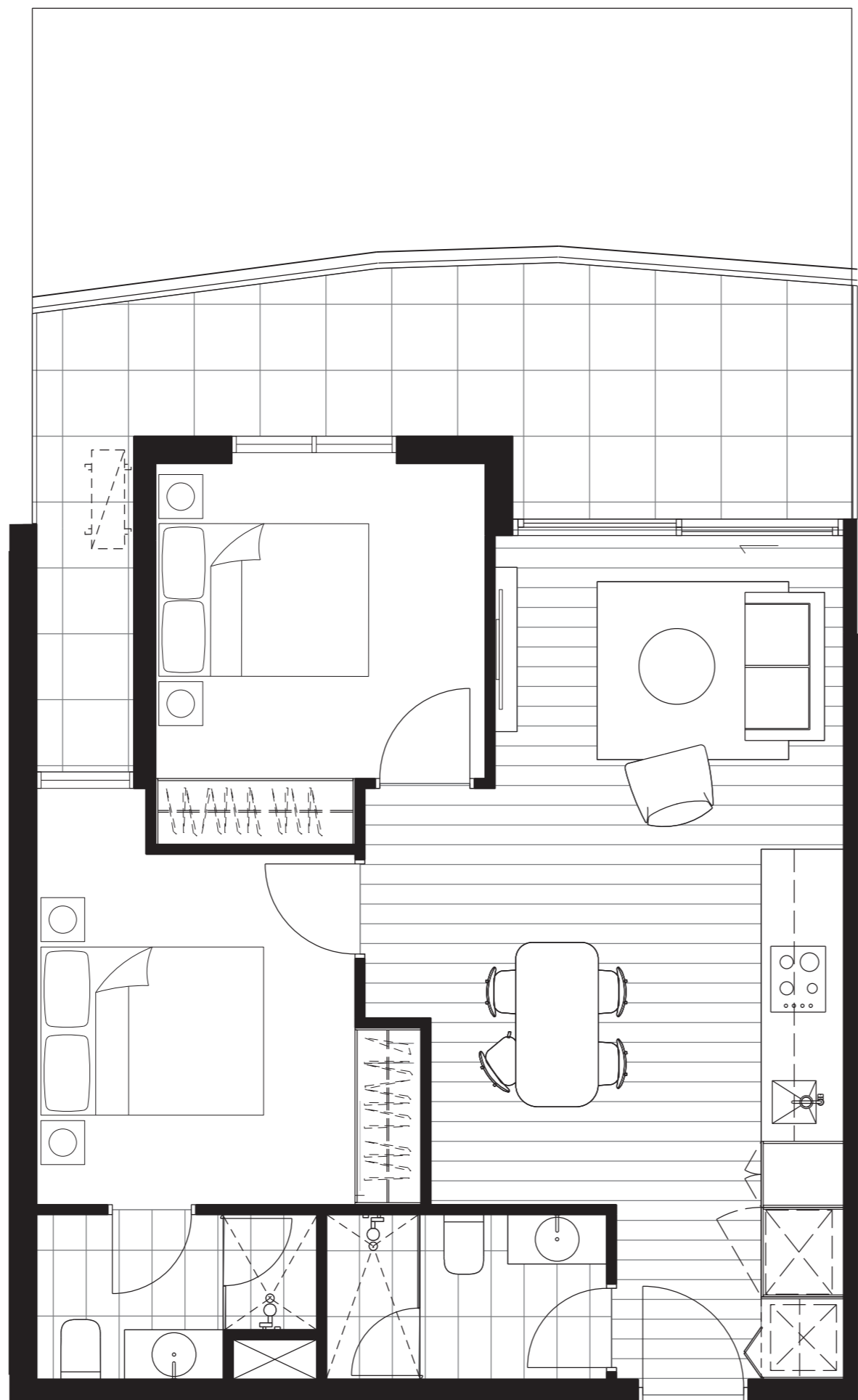
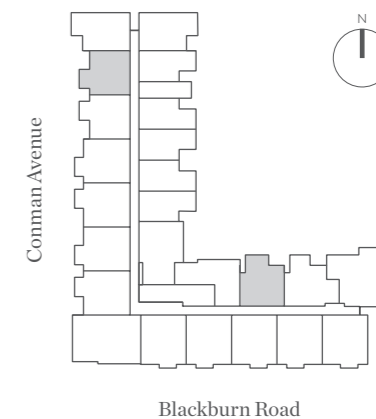
M=CITY
MONASH

schiavetto SARACENO GROUP

DISCLAIMER Any dimensions, layout, design features, views, areas, photographs and artist's impressions are for presentation purposes and indicative only. They are also subject to change in accordance with the Contract of Sale. All internal / external furniture (including study desks) and white goods are NOT included. All area calculations are based on the Property Council of Australia method of measurement guidelines and are estimates only. Any dimensions or areas may differ from survey areas due to different methods of measurement. External areas include planter and tiled areas. Final product may differ from that described. Purchasers should check the plans and specifications included in the contract of sale carefully prior to signing the contract of sale. Scale: not to scale.

M12

RESIDENCES



**Apt. No. 101, 115, 202, 216, 302,
316, 402, 416, 502, 516, 602,
616, 702, 716, 802, 816, 902, 916,
1002, 1016**

Type B05a

2 Bedroom

2 Bathroom

Internal 61m²

External 11-48m²

Total 72-109m²

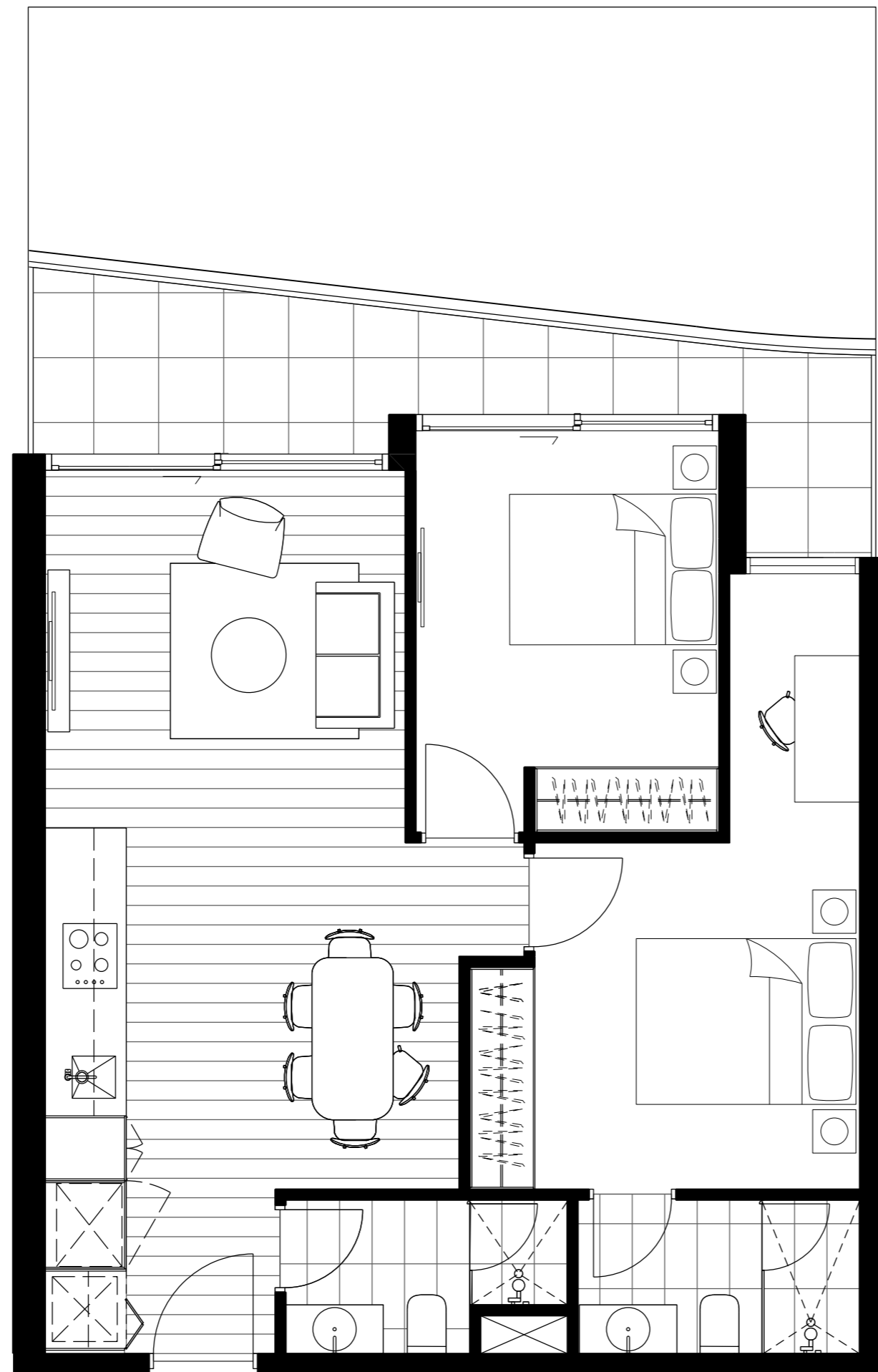
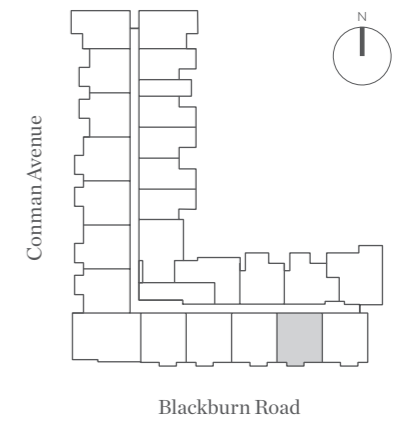
M=CITY
MONASH

schiavetto SARACENO GROUP

DISCLAIMER Any dimensions, layout, design features, views, areas, photographs and artist's impressions are for presentation purposes and indicative only. They are also subject to change in accordance with the Contract of Sale. All internal / external furniture (including study desks) and white goods are NOT included. All area calculations are based on the Property Council of Australia method of measurement guidelines and are estimates only. Any dimensions or areas may differ from survey areas due to different methods of measurement. External areas include planter and tiled areas. Final product may differ from that described. Purchasers should check the plans and specifications included in the contract of sale carefully prior to signing the contract of sale. Scale: not to scale.

M12

RESIDENCES



**Apt. No. 105, 206, 306, 406, 506,
606, 706, 806, 906, 1006**

Type B06

2 Bedroom

2 Bathroom

Internal 66m²

External 9-44m²

Total 75-110m²

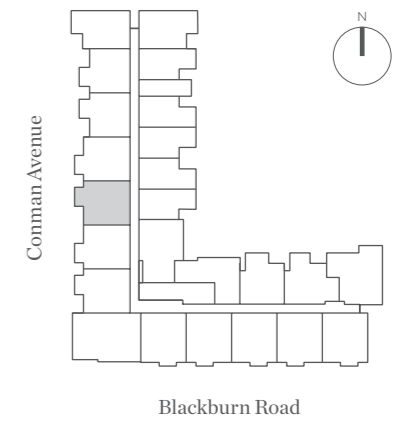
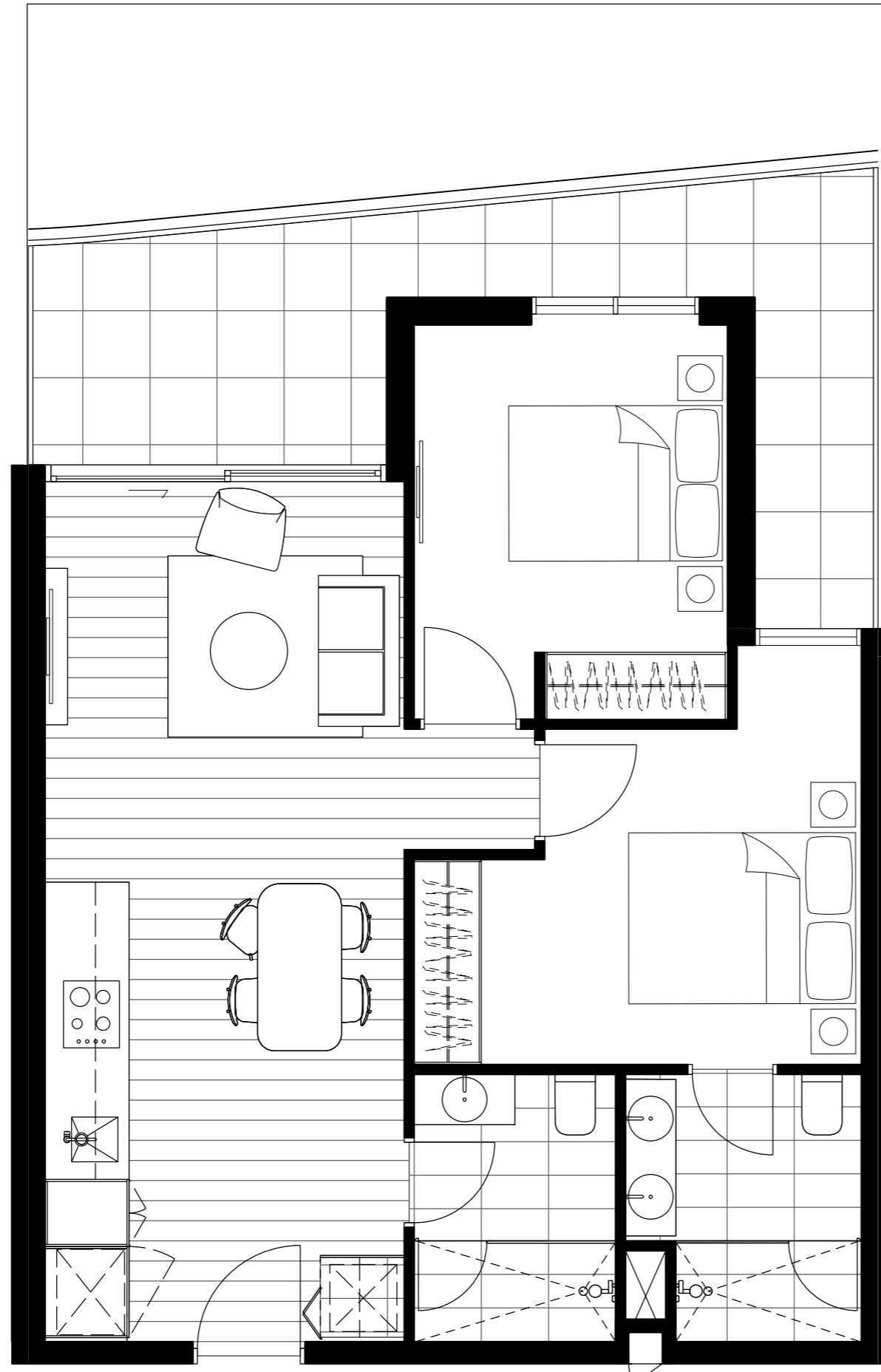
M=CITY
MONASH

schiaavello SARACENO GROUP

DISCLAIMER Any dimensions, layout, design features, views, areas, photographs and artist's impressions are for presentation purposes and indicative only. They are also subject to change in accordance with the Contract of Sale. All internal / external furniture (including study desks) and white goods are NOT included. All area calculations are based on the Property Council of Australia method of measurement guidelines and are estimates only. Any dimensions or areas may differ from survey areas due to different methods of measurement. External areas include planter and tiled areas. Final product may differ from that described. Purchasers should check the plans and specifications included in the contract of sale carefully prior to signing the contract of sale. Scale: not to scale.

M12

RESIDENCES



**Apt. No. 112, 213, 313, 413, 513,
613, 713, 813, 913, 1013**

Type B07

2 Bedroom

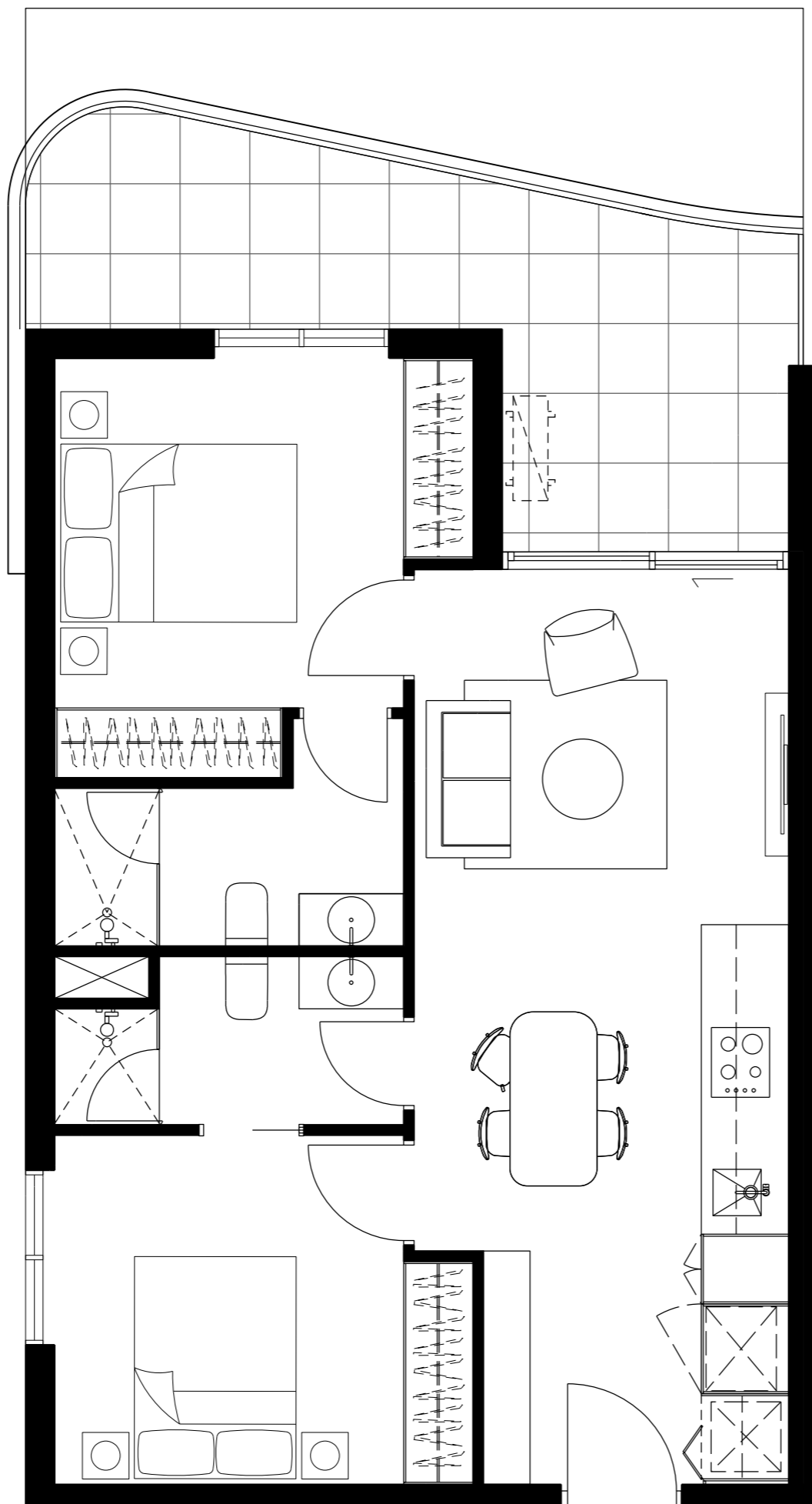
2 Bathroom

Internal	64m ²
External	15-45m ²
Total	79-109m²

M=CITY
MONASH

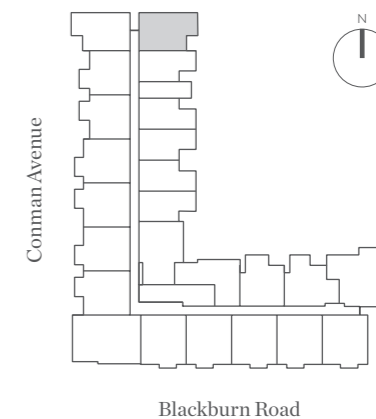
schiavetto SARACENO GROUP

DISCLAIMER Any dimensions, layout, design features, views, areas, photographs and artist's impressions are for presentation purposes and indicative only. They are also subject to change in accordance with the Contract of Sale. All internal / external furniture (including study desks) and white goods are NOT included. All area calculations are based on the Property Council of Australia method of measurement guidelines and are estimates only. Any dimensions or areas may differ from survey areas due to different methods of measurement. External areas include planter and tiled areas. Final product may differ from that described. Purchasers should check the plans and specifications included in the contract of sale carefully prior to signing the contract of sale. Scale: not to scale.



M12

RESIDENCES



**Apt. No. 117, 218, 318, 418, 518, 618,
718, 818, 918, 1018**

Type B02-M

2 Bedroom

2 Bathroom

Internal	62m ²
External	16-23m ²
Total	78-85m²

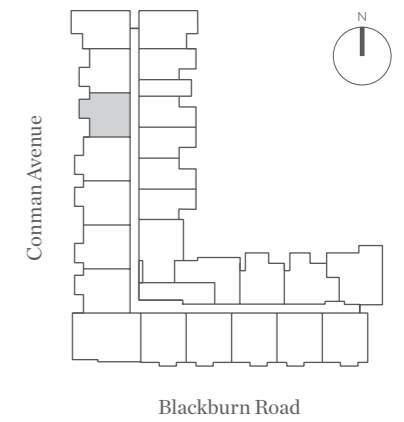
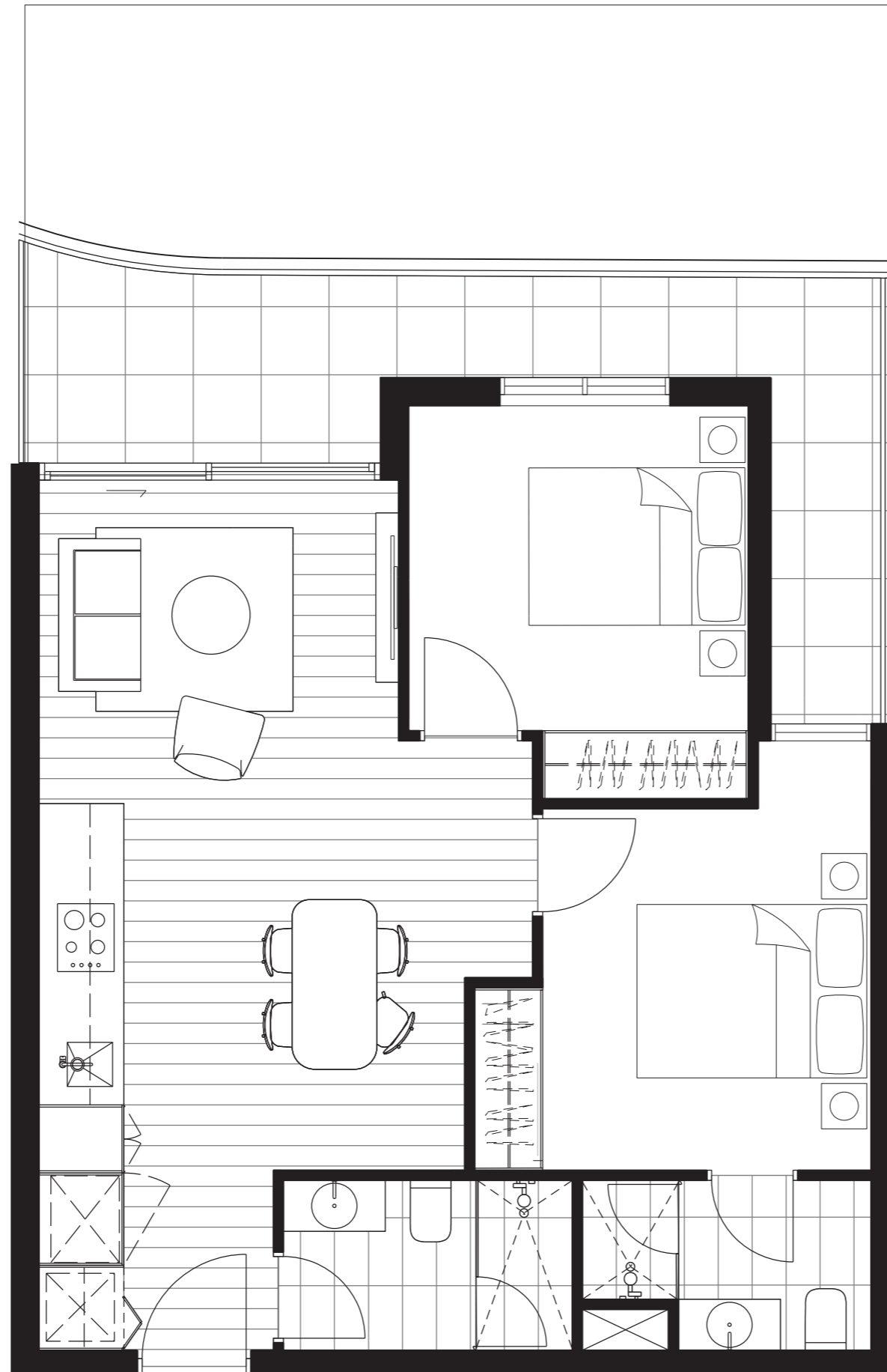
M=CITY
MONASH

schiavetto SARACENO GROUP

DISCLAIMER Any dimensions, layout, design features, views, areas, photographs and artist's impressions are for presentation purposes and indicative only. They are also subject to change in accordance with the Contract of Sale. All internal / external furniture (including study desks) and white goods are NOT included. All area calculations are based on the Property Council of Australia method of measurement guidelines and are estimates only. Any dimensions or areas may differ from survey areas due to different methods of measurement. External areas include planter and tiled areas. Final product may differ from that described. Purchasers should check the plans and specifications included in the contract of sale carefully prior to signing the contract of sale. Scale: not to scale.

M12

RESIDENCES



Apt. No. 114, 215, 315, 415, 515, 615, 715, 815, 915, 1015

Type B05a-M

2 Bedroom

2 Bathroom

Internal 61m²

External 13-48m²

Total 74-109m²

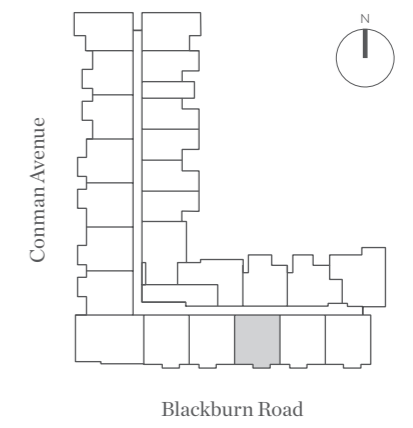
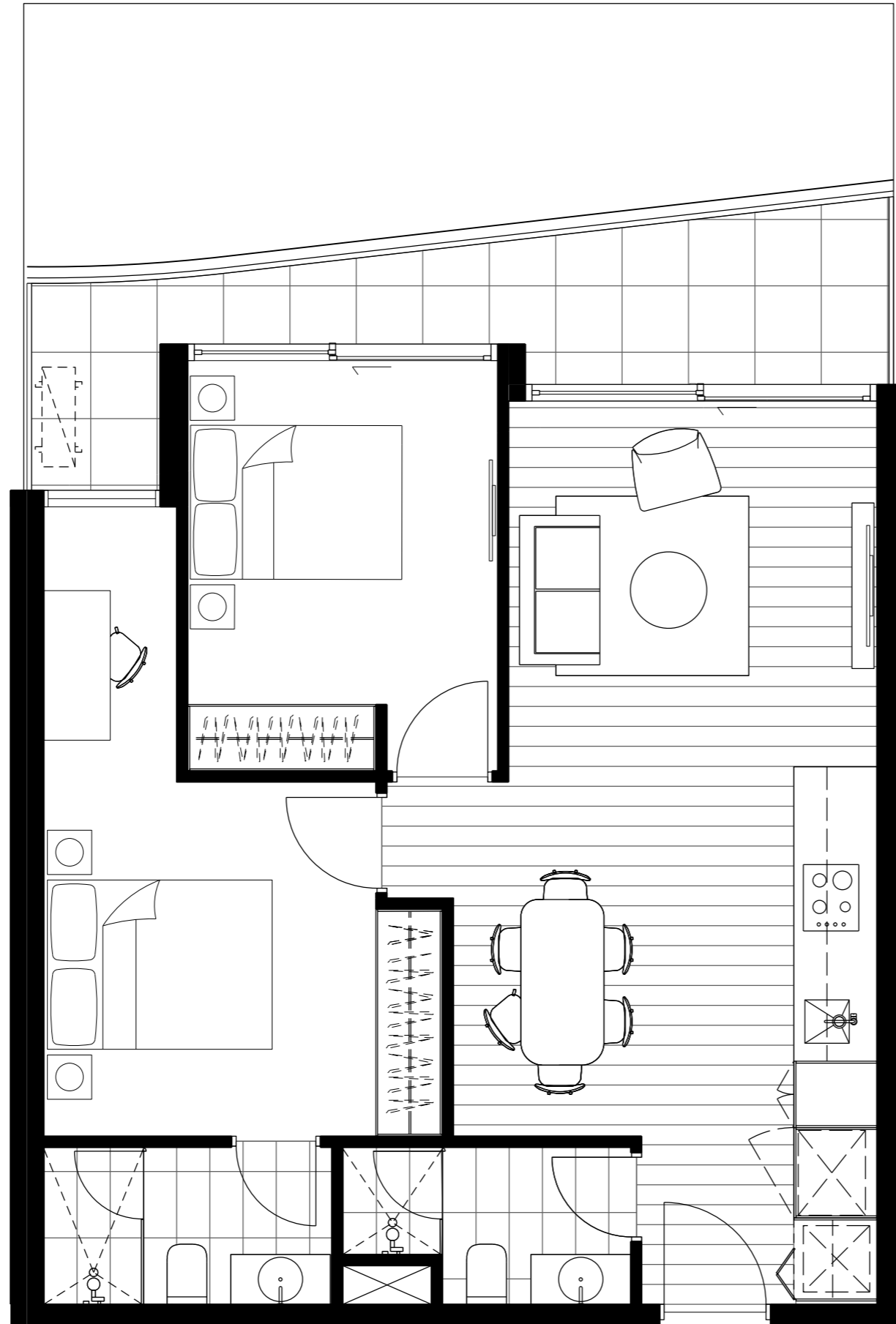
M=CITY
MONASH

schiaavello SARACENO GROUP

DISCLAIMER Any dimensions, layout, design features, views, areas, photographs and artist's impressions are for presentation purposes and indicative only. They are also subject to change in accordance with the Contract of Sale. All internal / external furniture (including study desks) and white goods are NOT included. All area calculations are based on the Property Council of Australia method of measurement guidelines and are estimates only. Any dimensions or areas may differ from survey areas due to different methods of measurement. External areas include planter and tiled areas. Final product may differ from that described. Purchasers should check the plans and specifications included in the contract of sale carefully prior to signing the contract of sale. Scale: not to scale.

M12

RESIDENCES



Apt. No. 106, 207, 307, 407, 507, 607, 707, 807, 907, 1007

Type B06-M

2 Bedroom

2 Bathroom

Internal	66m ²
External	11-44m ²
Total	77-110m²

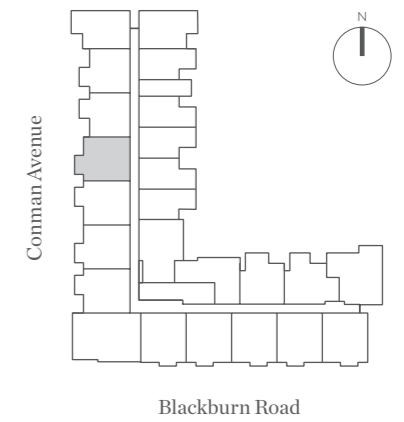
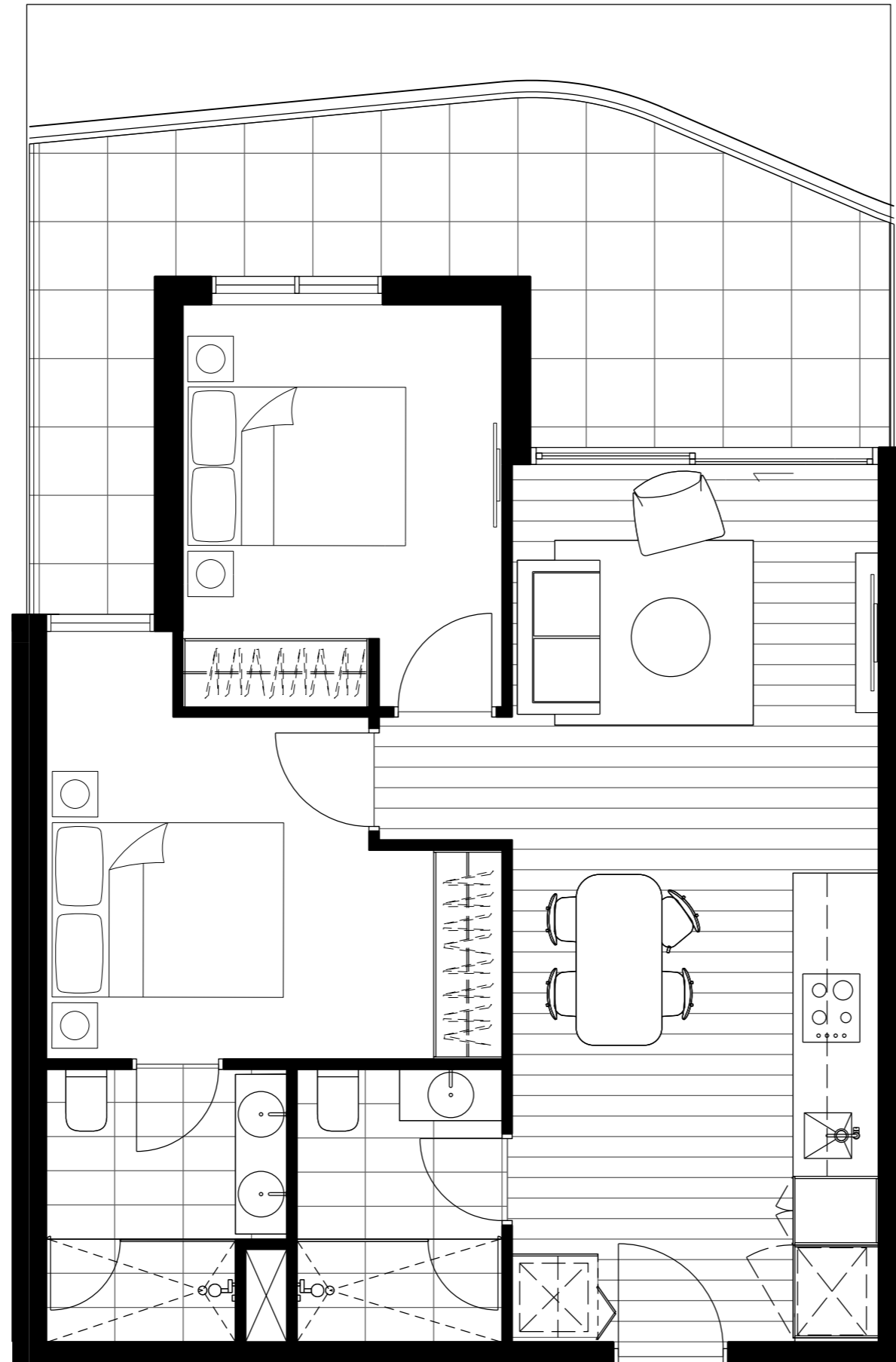


schiavetto SARACENO GROUP

DISCLAIMER Any dimensions, layout, design features, views, areas, photographs and artist's impressions are for presentation purposes and indicative only. They are also subject to change in accordance with the Contract of Sale. All internal / external furniture (including study desks) and white goods are NOT included. All area calculations are based on the Property Council of Australia method of measurement guidelines and are estimates only. Any dimensions or areas may differ from survey areas due to different methods of measurement. External areas include planter and tiled areas. Final product may differ from that described. Purchasers should check the plans and specifications included in the contract of sale carefully prior to signing the contract of sale. Scale: not to scale.

M12

RESIDENCES



**Apt. No. 113, 214, 314, 414, 514,
614, 714, 814, 914, 1014**

Type B07-M

2 Bedroom

2 Bathroom

Internal	64m ²
External	13-44m ²
Total	77-108m²

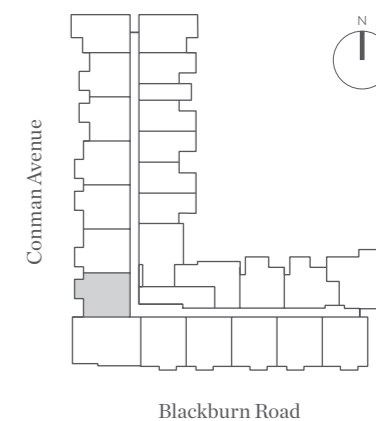
M=CITY
MONASH

schiaavello SARACENO GROUP

DISCLAIMER Any dimensions, layout, design features, views, areas, photographs and artist's impressions are for presentation purposes and indicative only. They are also subject to change in accordance with the Contract of Sale. All internal / external furniture (including study desks) and white goods are NOT included. All area calculations are based on the Property Council of Australia method of measurement guidelines and are estimates only. Any dimensions or areas may differ from survey areas due to different methods of measurement. External areas include planter and tiled areas. Final product may differ from that described. Purchasers should check the plans and specifications included in the contract of sale carefully prior to signing the contract of sale. Scale: not to scale.

M12

RESIDENCES



**Apt. No. 110, 211, 311, 411, 511, 611,
711, 811, 911, 1011,**

Type B09

2 Bedroom

2 Bathroom

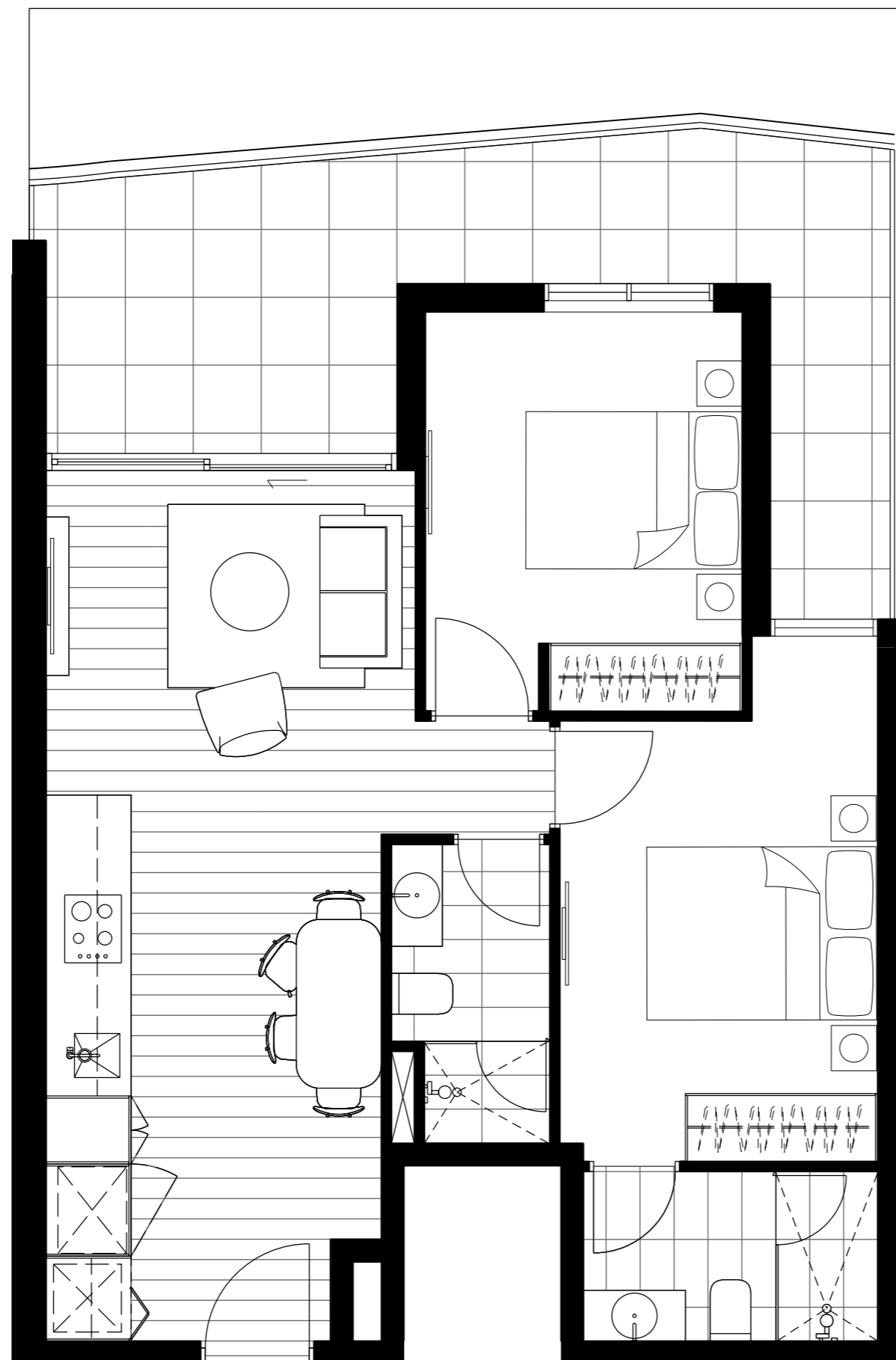
Internal 60m²

External 18-46m²

Total 78-106m²

M=CITY
MONASH

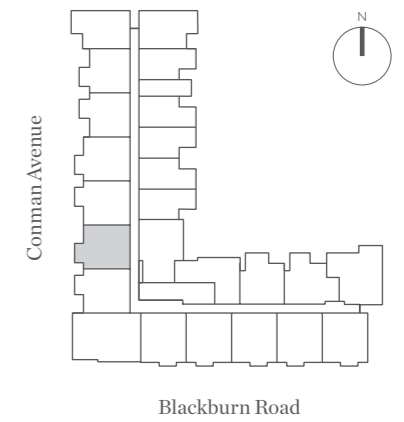
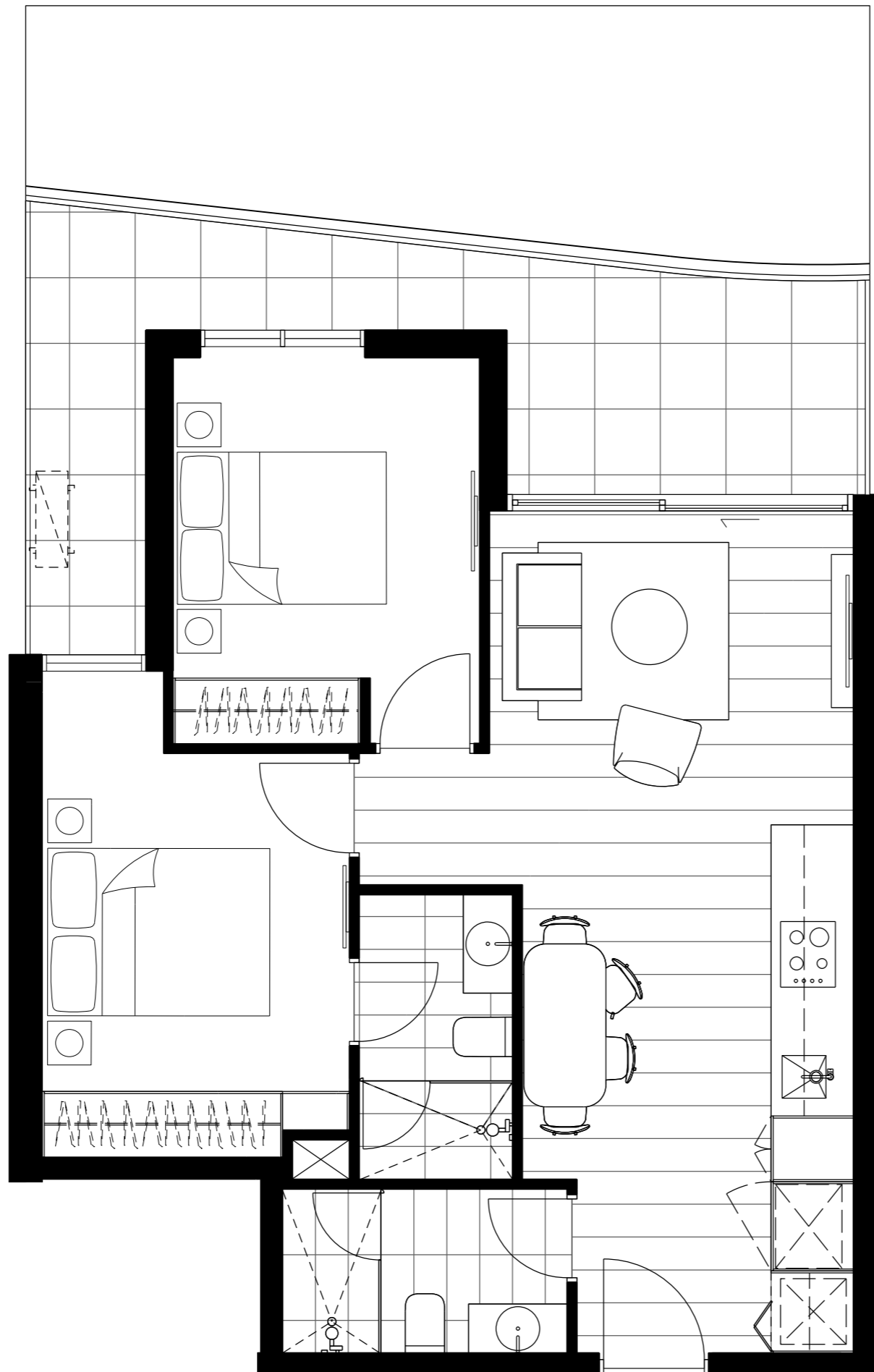
schiaavello SARACENO GROUP



DISCLAIMER Any dimensions, layout, design features, views, areas, photographs and artist's impressions are for presentation purposes and indicative only. They are also subject to change in accordance with the Contract of Sale. All internal / external furniture (including study desks) and white goods are NOT included. All area calculations are based on the Property Council of Australia method of measurement guidelines and are estimates only. Any dimensions or areas may differ from survey areas due to different methods of measurement. External areas include planter and tiled areas. Final product may differ from that described. Purchasers should check the plans and specifications included in the contract of sale carefully prior to signing the contract of sale. Scale: not to scale.

M12

RESIDENCES



**Apt. No. 111, 212, 312, 412, 512,
612, 712, 812, 912, 1012**

Type B10

2 Bedroom

2 Bathroom

Internal	60m ²
External	15-45m ²
Total	75-105m²

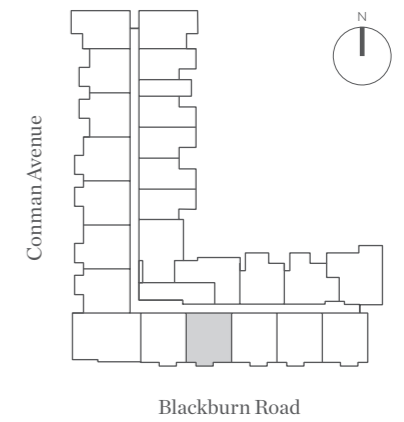
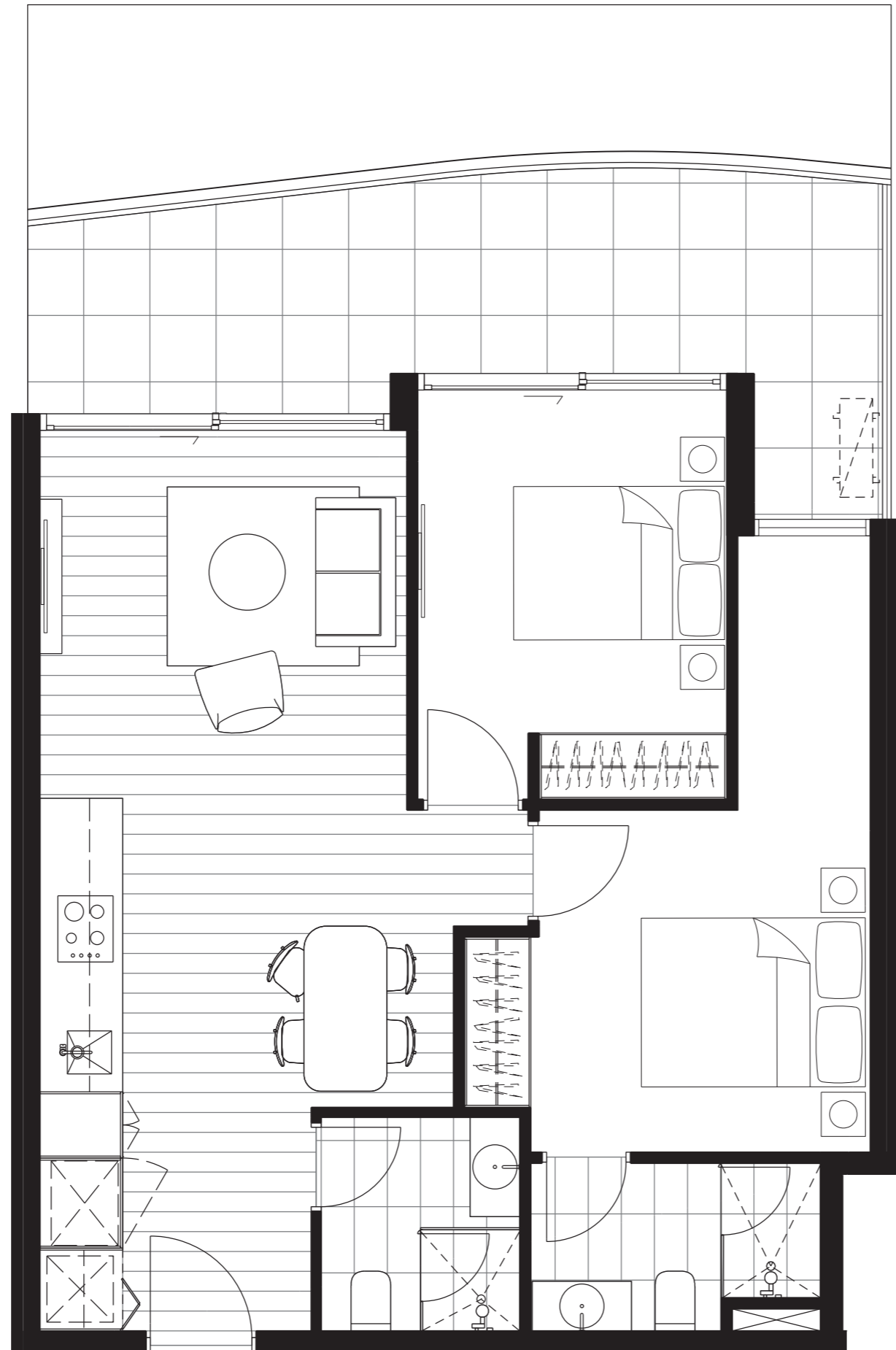
M=CITY
MONASH

schiaavello SARACENO GROUP

DISCLAIMER Any dimensions, layout, design features, views, areas, photographs and artist's impressions are for presentation purposes and indicative only. They are also subject to change in accordance with the Contract of Sale. All internal / external furniture (including study desks) and white goods are NOT included. All area calculations are based on the Property Council of Australia method of measurement guidelines and are estimates only. Any dimensions or areas may differ from survey areas due to different methods of measurement. External areas include planter and tiled areas. Final product may differ from that described. Purchasers should check the plans and specifications included in the contract of sale carefully prior to signing the contract of sale. Scale: not to scale.

M12

RESIDENCES



**Apt. No. 107, 208, 308, 408, 508,
608, 708, 808, 908, 1008**

Type B11

2 Bedroom

2 Bathroom

Internal	65m ²
External	17-44m ²
Total	82-109m²

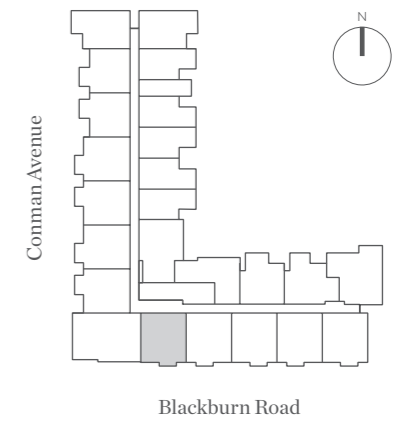
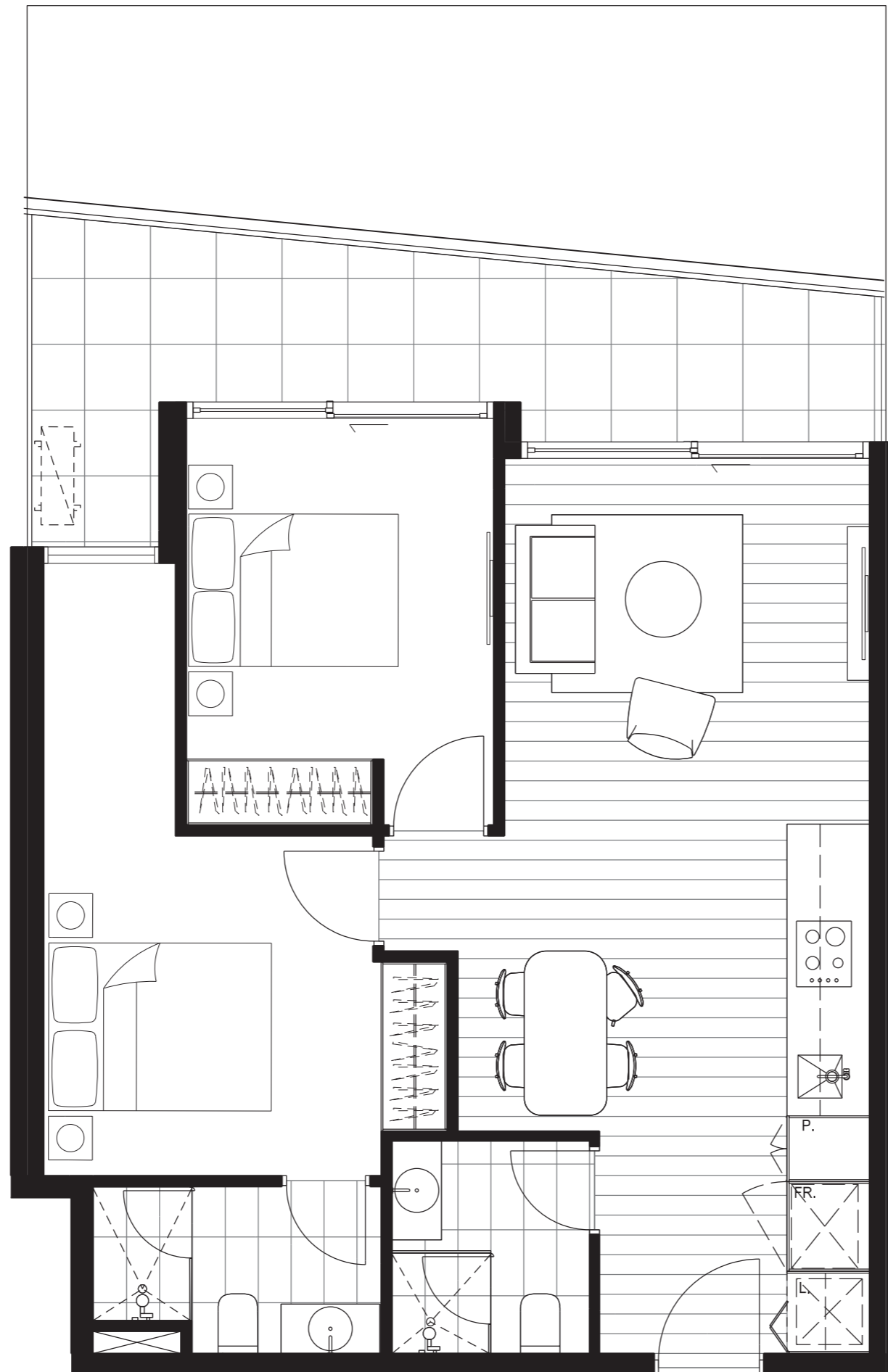
M=CITY
MONASH

schiavetto SARACENO GROUP

DISCLAIMER Any dimensions, layout, design features, views, areas, photographs and artist's impressions are for presentation purposes and indicative only. They are also subject to change in accordance with the Contract of Sale. All internal / external furniture (including study desks) and white goods are NOT included. All area calculations are based on the Property Council of Australia method of measurement guidelines and are estimates only. Any dimensions or areas may differ from survey areas due to different methods of measurement. External areas include planter and tiled areas. Final product may differ from that described. Purchasers should check the plans and specifications included in the contract of sale carefully prior to signing the contract of sale. Scale: not to scale.

M12

RESIDENCES



**Apt. No. 108, 209, 309, 409, 509,
609, 709, 809, 909, 1009**

Type B11-M

2 Bedroom

2 Bathroom

Internal 65m²

External 11-44m²

Total 76-109m²

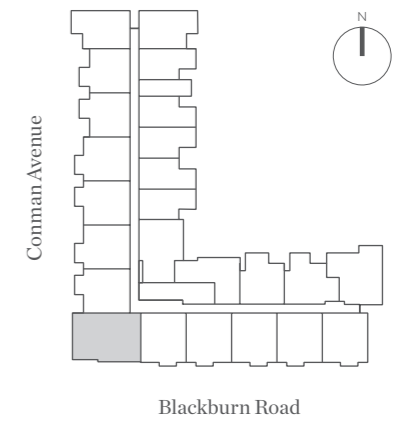
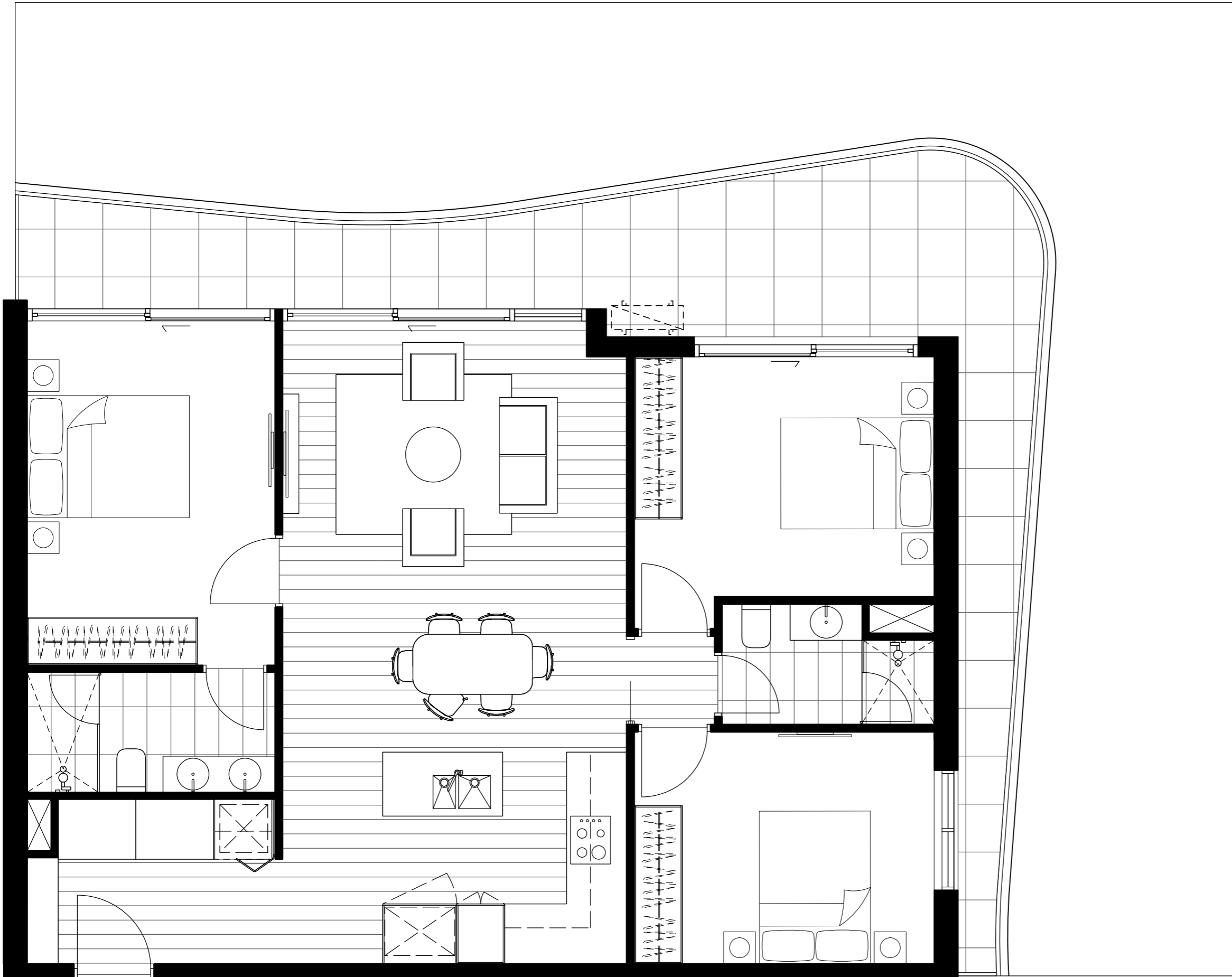
M=CITY
MONASH

schiavetto SARACENO GROUP

DISCLAIMER Any dimensions, layout, design features, views, areas, photographs and artist's impressions are for presentation purposes and indicative only. They are also subject to change in accordance with the Contract of Sale. All internal / external furniture (including study desks) and white goods are NOT included. All area calculations are based on the Property Council of Australia method of measurement guidelines and are estimates only. Any dimensions or areas may differ from survey areas due to different methods of measurement. External areas include planter and tiled areas. Final product may differ from that described. Purchasers should check the plans and specifications included in the contract of sale carefully prior to signing the contract of sale. Scale: not to scale.

M12

RESIDENCES



**Apt. No. 109, 210, 310, 410, 510,
610, 710, 810, 910, 1010**

Type C08

3 Bedroom

2 Bathroom

Internal 97m²

External 29-133m²

Total 126-230m²

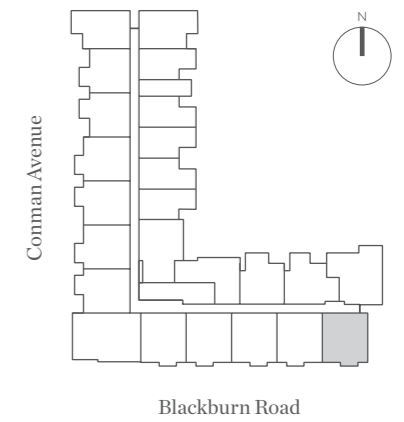
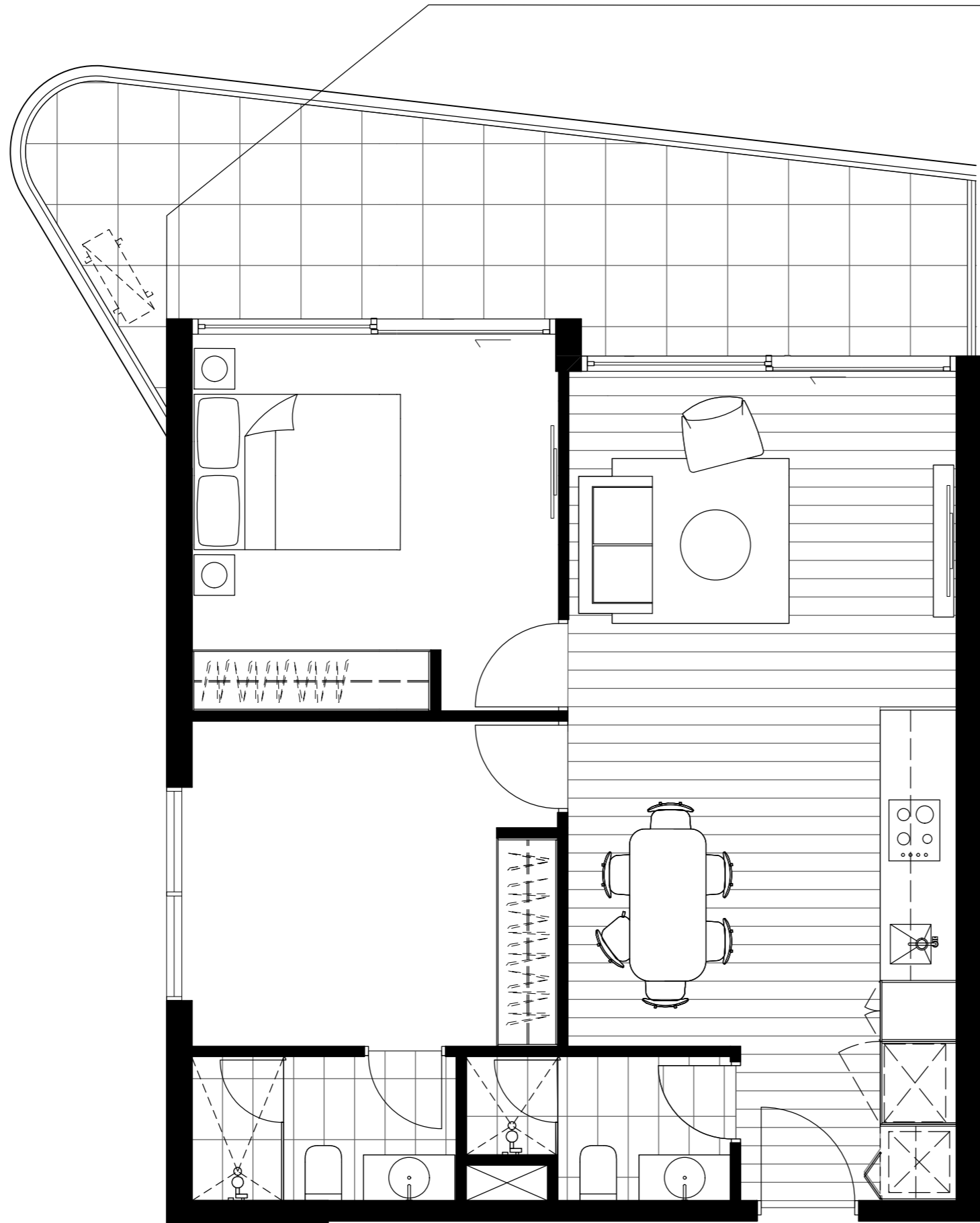
M=CITY
MONASH

schiaavello SARACENO GROUP

DISCLAIMER Any dimensions, layout, design features, views, areas, photographs and artist's impressions are for presentation purposes and indicative only. They are also subject to change in accordance with the Contract of Sale. All internal / external furniture (including study desks) and white goods are NOT included. All area calculations are based on the Property Council of Australia method of measurement guidelines and are estimates only. Any dimensions or areas may differ from survey areas due to different methods of measurement. External areas include planter and tiled areas. Final product may differ from that described. Purchasers should check the plans and specifications included in the contract of sale carefully prior to signing the contract of sale. Scale: not to scale.

M12

RESIDENCES



**Apt. No. 104, 205, 305, 405, 505,
605, 705, 805, 905, 1005**

Type B21

2 Bedroom

2 Bathroom

Internal 68m²

External 16-38m²

Total 84-106m²

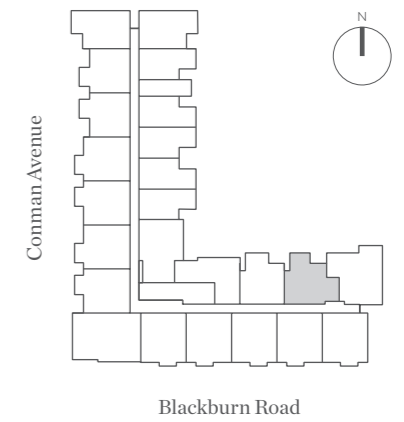
M=CITY
MONASH

schiavetto SARACENO GROUP

DISCLAIMER Any dimensions, layout, design features, views, areas, photographs and artist's impressions are for presentation purposes and indicative only. They are also subject to change in accordance with the Contract of Sale. All internal / external furniture (including study desks) and white goods are NOT included. All area calculations are based on the Property Council of Australia method of measurement guidelines and are estimates only. Any dimensions or areas may differ from survey areas due to different methods of measurement. External areas include planter and tiled areas. Final product may differ from that described. Purchasers should check the plans and specifications included in the contract of sale carefully prior to signing the contract of sale. Scale: not to scale.

M12

RESIDENCES



**Apt. No. 102, 203, 303, 403, 503,
603, 703, 803, 903, 1003**

Type B14

2 Bedroom

2 Bathroom

Internal 69m²

External 17-37m²

Total 86-106m²

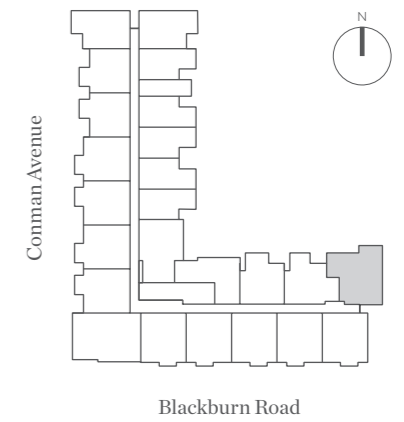
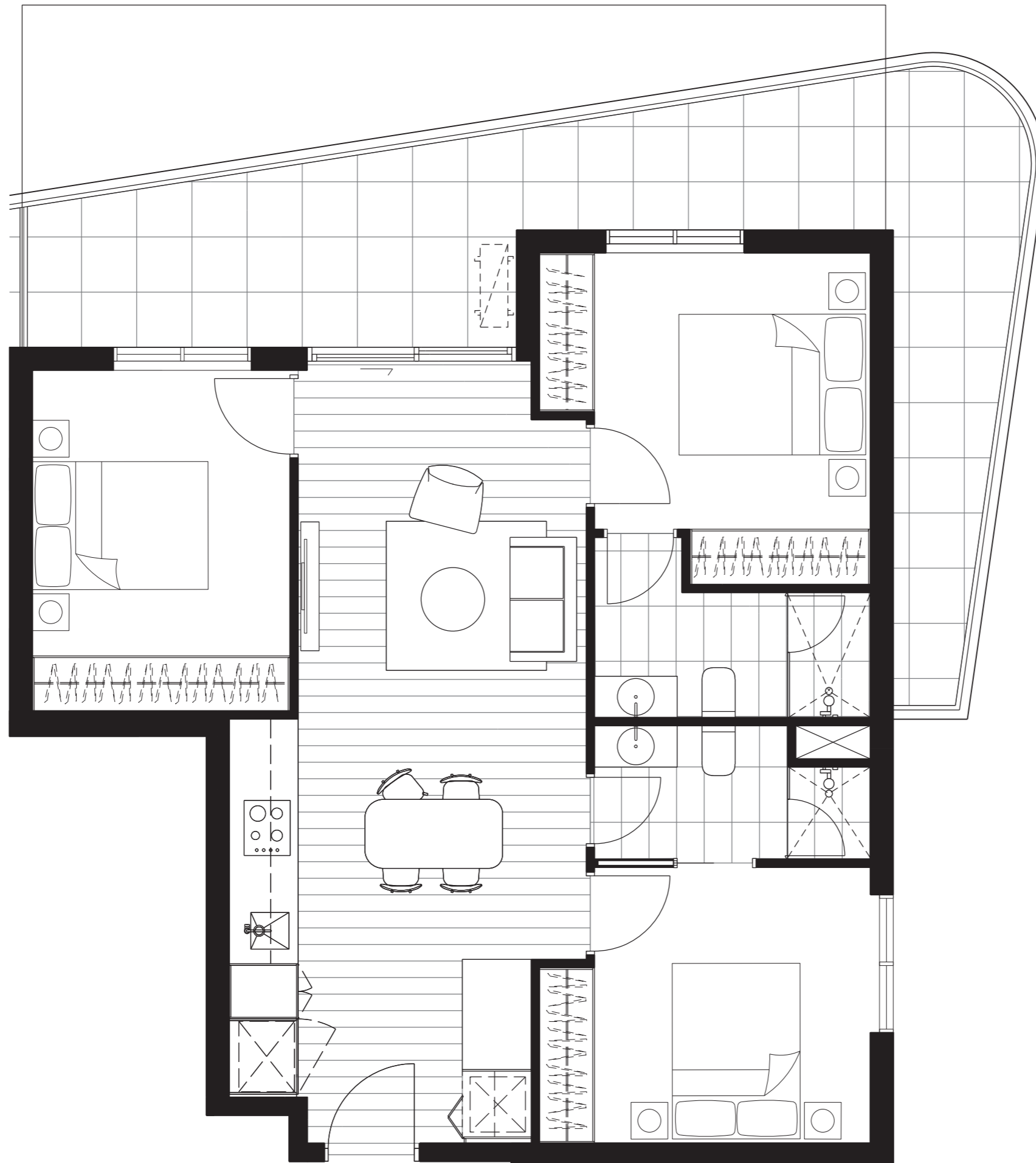
M=CITY
MONASH

schiaavello SARACENO GROUP

DISCLAIMER Any dimensions, layout, design features, views, areas, photographs and artist's impressions are for presentation purposes and indicative only. They are also subject to change in accordance with the Contract of Sale. All internal / external furniture (including study desks) and white goods are NOT included. All area calculations are based on the Property Council of Australia method of measurement guidelines and are estimates only. Any dimensions or areas may differ from survey areas due to different methods of measurement. External areas include planter and tiled areas. Final product may differ from that described. Purchasers should check the plans and specifications included in the contract of sale carefully prior to signing the contract of sale. Scale: not to scale.

M12

RESIDENCES



**Apt. No. 103, 204, 304, 404, 504,
604, 704, 804, 904, 1004**

Type E16

3 Bedroom

2 Bathroom

Internal 78m²

External 26-33m²

Total 104-111m²

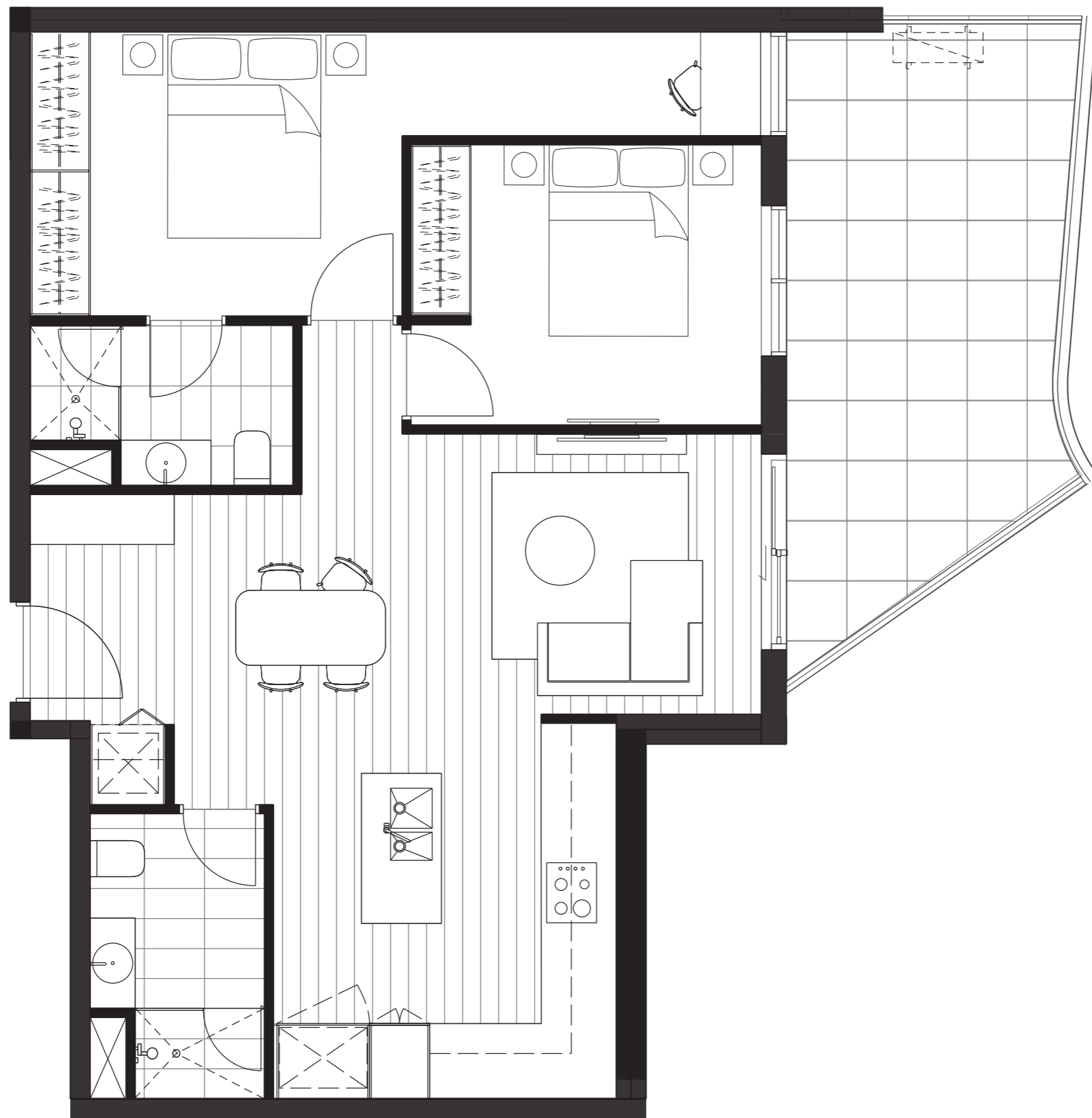
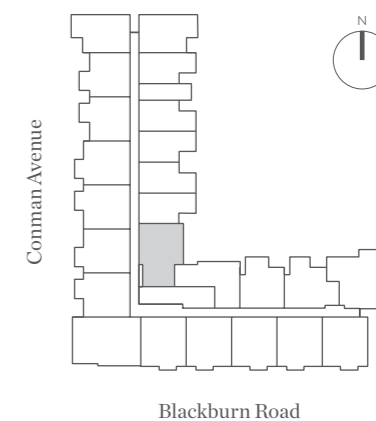
M=CITY
MONASH

schiavetto SARACENO GROUP

DISCLAIMER Any dimensions, layout, design features, views, areas, photographs and artist's impressions are for presentation purposes and indicative only. They are also subject to change in accordance with the Contract of Sale. All internal / external furniture (including study desks) and white goods are NOT included. All area calculations are based on the Property Council of Australia method of measurement guidelines and are estimates only. Any dimensions or areas may differ from survey areas due to different methods of measurement. External areas include planter and tiled areas. Final product may differ from that described. Purchasers should check the plans and specifications included in the contract of sale carefully prior to signing the contract of sale. Scale: not to scale.

M12

RESIDENCES



**Apt. No. 224, 324, 424, 524, 624,
724, 824, 924, 1024**

Type B16

2 Bedroom

2 Bathroom

Internal 74m²

External 17-21m²

Total 91-95m²

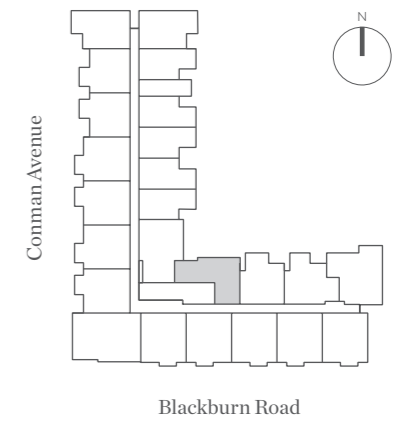
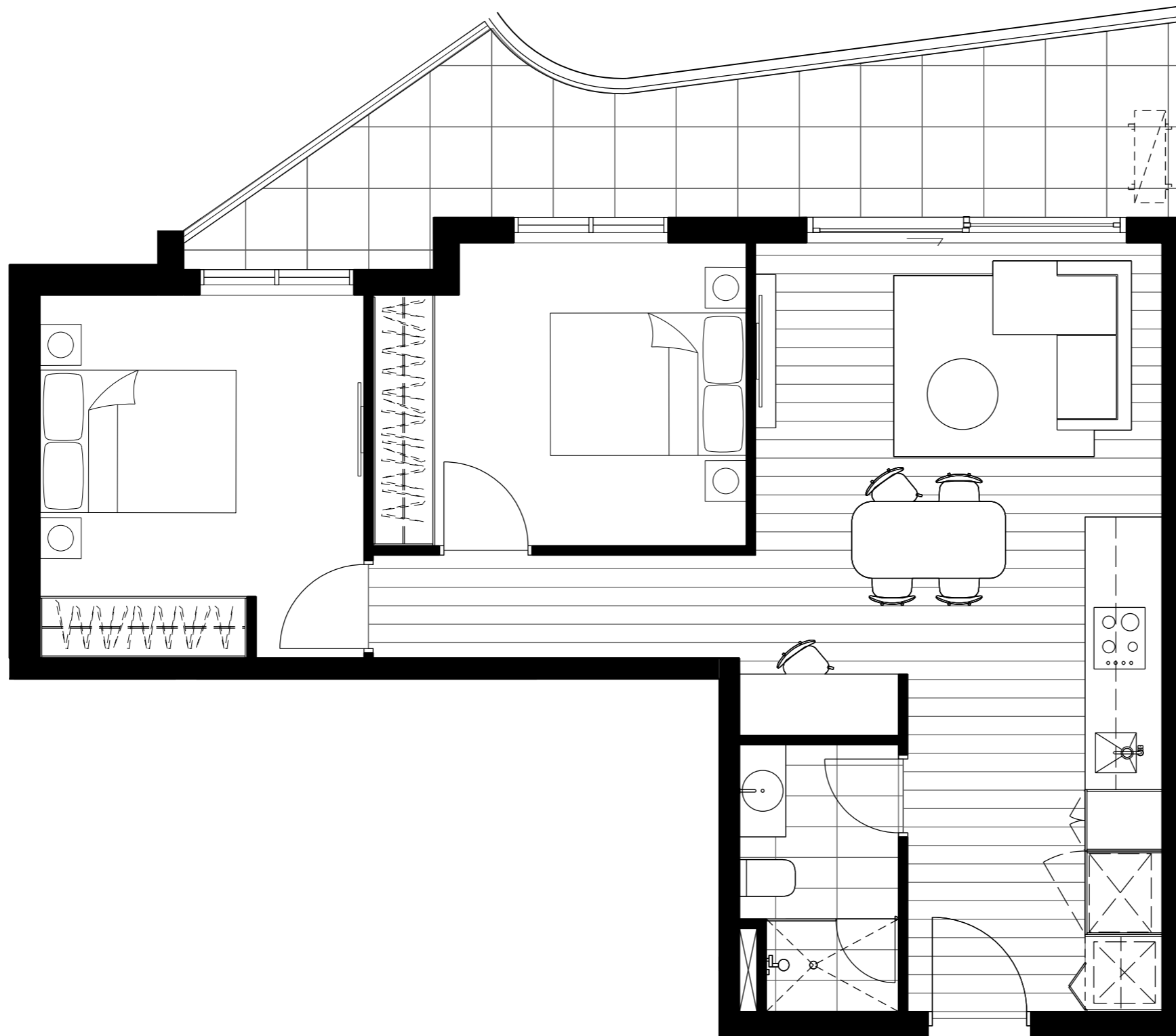
M=CITY
MONASH

schiavetto SARACENO GROUP

DISCLAIMER Any dimensions, layout, design features, views, areas, photographs and artist's impressions are for presentation purposes and indicative only. They are also subject to change in accordance with the Contract of Sale. All internal / external furniture (including study desks) and white goods are NOT included. All area calculations are based on the Property Council of Australia method of measurement guidelines and are estimates only. Any dimensions or areas may differ from survey areas due to different methods of measurement. External areas include planter and tiled areas. Final product may differ from that described. Purchasers should check the plans and specifications included in the contract of sale carefully prior to signing the contract of sale. Scale: not to scale.

M12

RESIDENCES



**Apt. No. 201, 301, 401, 501, 601,
701, 801, 901, 1001**

Type B17

2 Bedroom

1 Bathroom

Internal	61m ²
External	15-17m ²
Total	76-78m²

M=CITY
MONASH

schiavetto SARACENO GROUP

DISCLAIMER Any dimensions, layout, design features, views, areas, photographs and artist's impressions are for presentation purposes and indicative only. They are also subject to change in accordance with the Contract of Sale. All internal / external furniture (including study desks) and white goods are NOT included. All area calculations are based on the Property Council of Australia method of measurement guidelines and are estimates only. Any dimensions or areas may differ from survey areas due to different methods of measurement. External areas include planter and tiled areas. Final product may differ from that described. Purchasers should check the plans and specifications included in the contract of sale carefully prior to signing the contract of sale. Scale: not to scale.