

t

k



e

n

a

Quintessentially Essendon, Tekna's 30 one and two bedroom residences are built for greatness. Optimally located in the epicentre of Essendon, this series of refined apartments is encompassed by an enviable collection of cafes, restaurants, retailers, services, parklands and educational institutions, all of which contribute to this exciting and proudly connected community.

A niche
PROJECT



A contemporary building offering sleek and sophisticated forms, Tekna features articulated facades incorporating a variety of fenestration elements and individual glazed balconies in combination with a selection of architectural projections and linear elements. The project introduces a bold, fresh energy to Essendon, crafted with a selection of modern, sustainable, and practical external finishes, which collectively work in harmony to present an uncompromising air of quality.



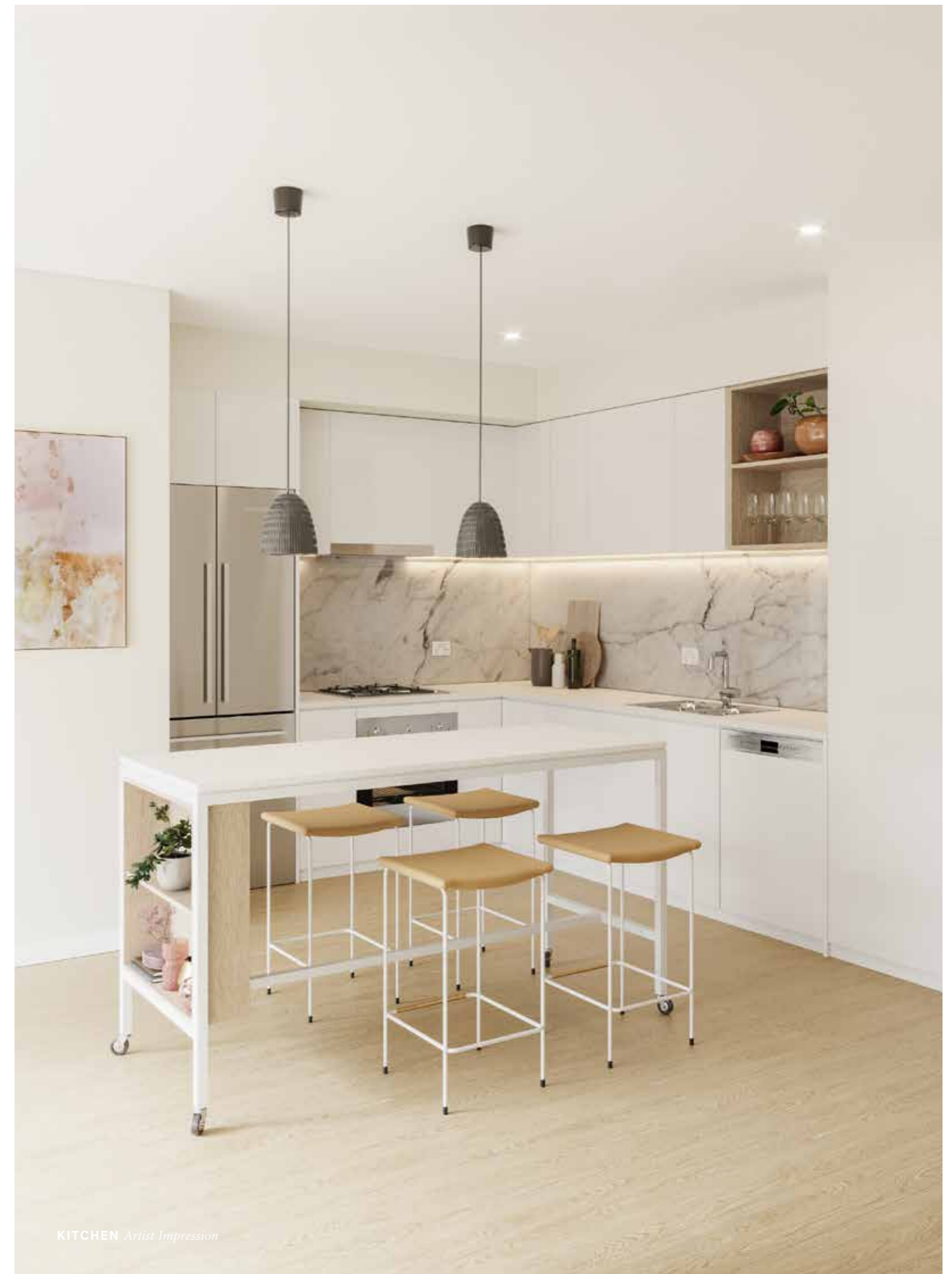
LEFT Architect's preliminary sketch



EXTERIOR *Artist Impression*

Intuitively made for Essendon.

Tekna is designed to mirror everything that is great about Essendon, comprising of materials and colours selected to complement Russell Street's existing streetscape. At once, Tekna is influenced by and made for its dynamic and sought-after landscape, presenting a new and exciting face for the area's future. Beyond a vibrant facade are homes that achieve balance between convenience and aesthetic. The result is inspiring kitchen settings equipped to cook up a storm in, composed of stone benchtops, European appliances and pendant lighting to illuminate your finest culinary creations. Kitchens lead the way into Tekna's open plan living areas, crafted to allow for seamless and easy living, while establishing a connection with the outdoors by providing a gateway to each apartment's terrace.



KITCHEN *Artist Impression*



Artist Impression of – left: **KITCHEN SETTING** & right: **BATHROOM VANITY**

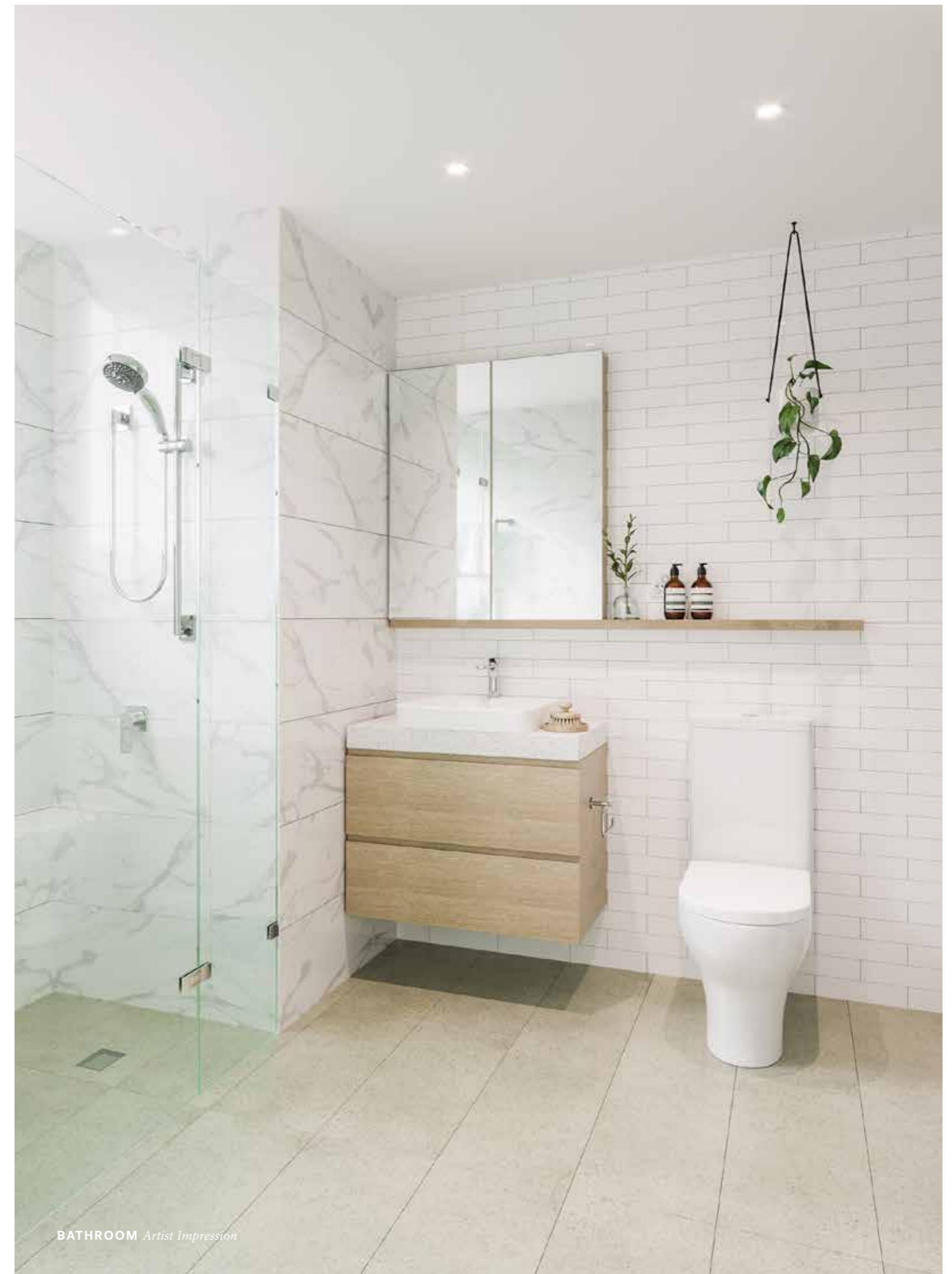




BEDROOM & BATHROOM

Elegant yet equally convenient settings.

There is something satisfyingly serene that comes with a lack of clutter. Tekna's bathrooms are created in line with the philosophy that less is really more. White, bright and lively spaces are designed to make the process of getting ready for the day and unwinding following a long one both simple and effortless, featuring smartly integrated storage spaces. Similarly, Tekna's bedrooms are formed with layers of materials and fabrics that align with the theme of comfort. A neutral yet warm colour palette anchors the bedroom in an all-encompassing sense of tranquillity, to create a setting of ultimate rejuvenation.



BATHROOM *Artist Impression*



BEDROOM Artist Impression

ESSENDON LOCATION

Everything you could want and need, and more.

Make home a mere 11km away from the vibrancy of Melbourne's city centre. Tekna is centrally located with the hubs of Buckley St [40m] and Mt Alexander Rd [260m] on its doorstep. With Essendon Station [50m] within such close reach, residents are able to travel to every corner of the city with great ease, not that there's much reason to leave – everything you could ask for is within Tekna's surroundings.

EAT & DRINK

01. A1 Bakery
02. Currators Collective
03. Hey Jude
04. Johnny Pump
05. Parisian Patisserie Boulangerie
06. Royal Hotel
07. St Martha's
08. St Rose
09. Ten One Ate
10. The Valley Cellar Door
11. Woodstock Pizzicheria
12. 400 Gradi

GROCERS & RETAIL

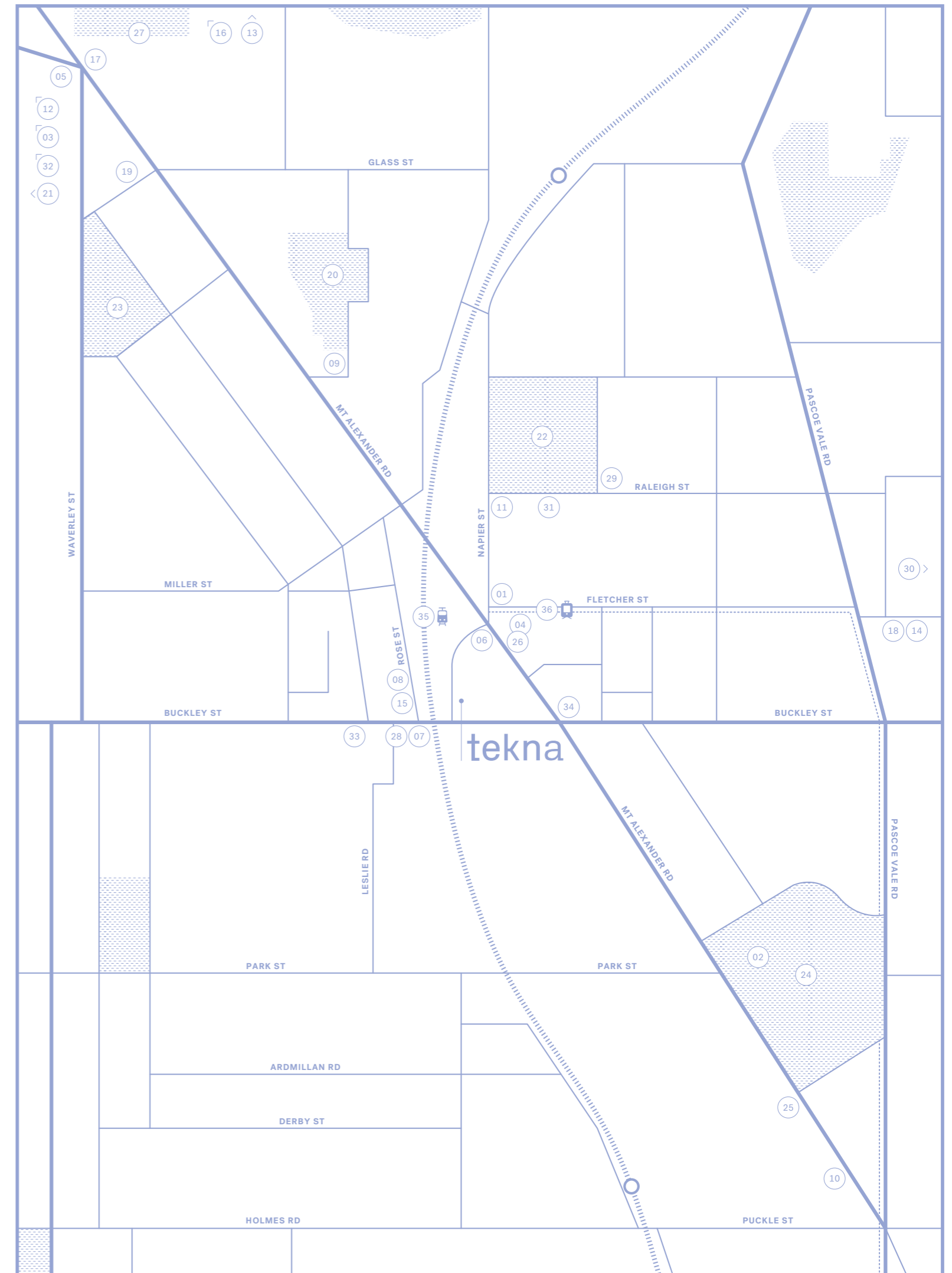
13. DFO
14. Harper & Blohm
15. Intrigue on Rose
16. LaManna Supermarket
17. Pane E Pizzico
18. Prince Wine & Spirits
19. Village Blooms

PARKS & RECREATION

20. Allison Park
21. Buckley Park
22. Essendon Cricket Ground
23. Lincoln Park
24. Queens Park
25. Studio 3
26. The Essendon Cyclery
27. Woodlands Historic Park
28. Xtend Barre

EDUCATION & TRANSPORT

29. Essendon Primary School
30. Montgomery Park Children's Centre
31. Penleigh & Essendon Grammar Junior School
32. Penleigh & Essendon Grammar School
33. St Columba's College
34. Buckley St Bus Stop
35. Essendon Train Station
36. No. 59 Tram



Essendon stands as a gleeful domain ready to serve for any day one sets out to have. A Saturday or Sunday may involve a relaxed brunch at one of the suburb's endless number of cafes, a few hours spent exploring the Maribyrnong River on a bike, or finding natural rejuvenation at one of the area's many, perfectly preened parklands.

MOONEE VALLEY
RACECOURSE

ALLISON
PARK

MELBOURNE
ZOO

TULLAMARINE
FREEWAY

QUEENS
PARK

NO. 59
TRAM

ESSENDON
STATION

6.5 KM
TO THE CBD

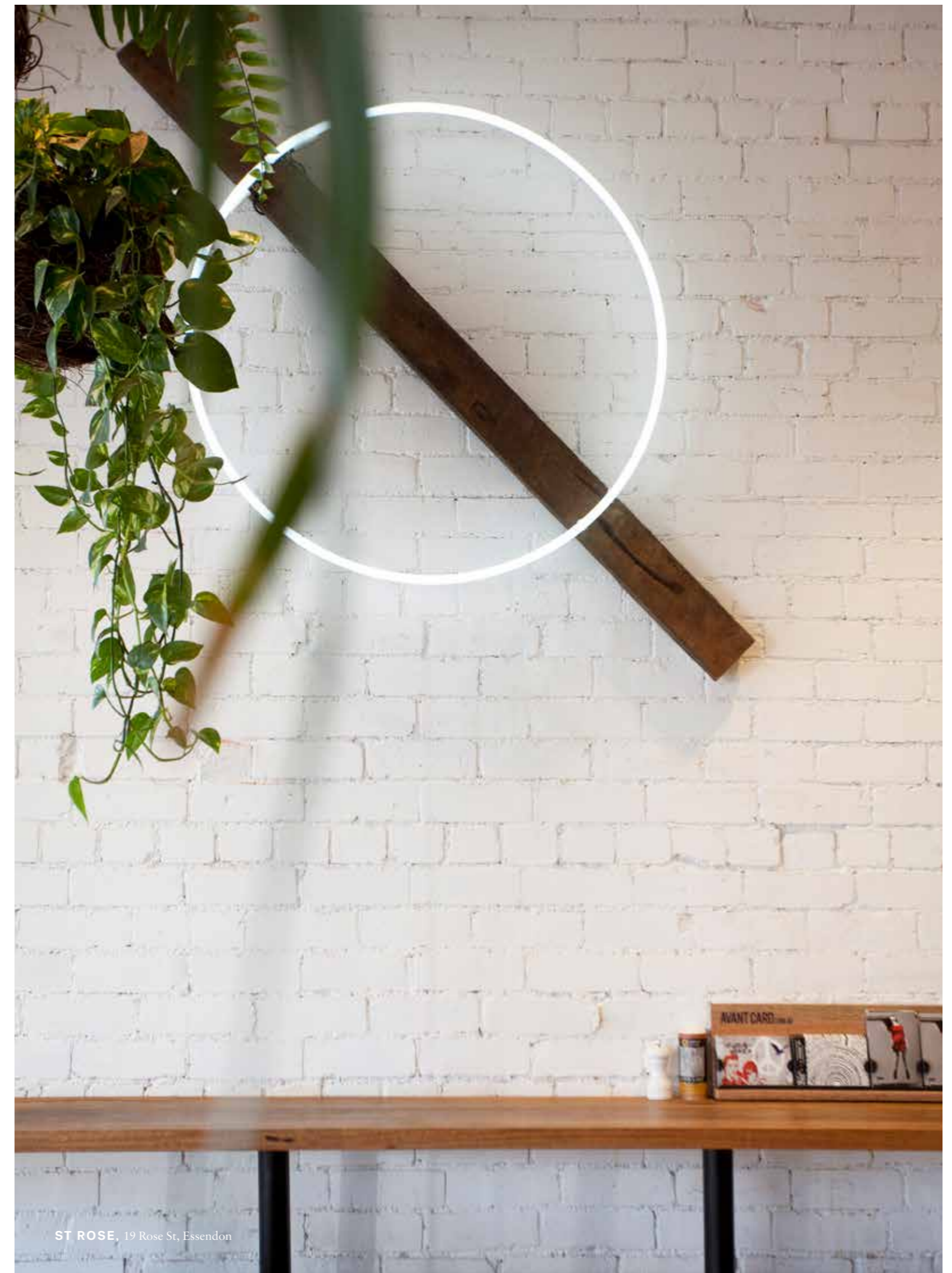
BUCKLEY
STREET

PORT PHILLIP
BAY

tekna

A dining landscape that has avid eaters flocking from all around the city.

Essendon's streets play host to a competitive collective of cafes, and sometimes, it can be rather tricky trying to choose just one to visit. St Rose [170m] is right by the train station, ready to send off or greet travellers with a cup of brilliantly brewed coffee and a delectable pastry. Ten One Ate's [850m] dishes so prettily picturesque, you may feel bad sticking your fork into them. Breakfast knows no limits at St Martha's [120m], which is served all day, every day, while Parisian Patisserie Boulangerie (1.6km) whips up perfect éclairs and mouth-watering baguettes to transport you to the streets of Paris.



ST ROSE, 19 Rose St, Essendon



400 GRADI, 110 Keilor Rd, Essendon

Woodstock Pizzicheria versus 400 Gradi; Rome versus Naples.

Italy only became a unified country in 1861, so it is understandable that when it comes to the pizza front there still remains incredibly strong rivalry. That competition is evident here on the other side of the world in Essendon, where powerhouses Woodstock Pizzicheria and 400 Gradi battle it out for the title of the suburb's best pizza. Both restaurants have clutched several awards for their culinary ingenuity, making it rather difficult to label a clear winner in this ongoing contest. Plus, each restaurant's pizza styles are distinctively different, so we'll leave the scoring up to you.

WOODSTOCK PIZZICHERIA (500M) - THE ROMANS

Following the formula of traditional Roman pizza, Woodstock Pizzicheria has left quite the mark on Melbourne's pizza scene since opening its first store in Brunswick East. Founder Tony Cannata has received multiple awards for his classic pizzas, which take the traditional Roman form thin but sturdy bases. Woodstock Pizzicheria is not only acclaimed for its savoury pizzas, but sweet pizzas, too. Chef Giovanna Alberti took the title of Australia's 'Best Dessert Pizza' in 2017 for her chocolate base, coffee custard pizza with lemon mousse, mint and dark chocolate. At Woodstock Pizzicheria, her specialty is a Nutella pizza topped with strawberries, Raffaello and mint. Who says pizza needs to stop at main course?

400 GRADI (2.2KM) - THE NEAPOLITANS

In 2014, owner of 400 Gradi Johnny Di Francesco headed to the World Pizza Championships in Parma, Italy; which is considered as one of the world's most prestigious pizza competitions. He dauntingly went up against about 600 competitors from 35 countries and beat them all, claiming the title of 'World's Best Pizza'. An Aussie winning such a sensational award is amazing enough, let alone the fact that one of their outposts being in Essendon. Following the crowning, *mamma mia*, 400 Gradi's reservations schedule saw no rest. The margherita pizza that saw Johnny rise to the top of the pizza ranks offers a puffy, elastic and generous base that is simply but masterfully topped with Neapolitan sauce, bubbling, melted balls of mozzarella, olive oil, fresh basil, and a sprinkling of salt.



1. **TEN ONE ATE**, 1018 Mt Alexander Rd, Essendon

A REALM OF
impeccable TASTE,
AND THE ULTIMATE
respect FOR FOOD.



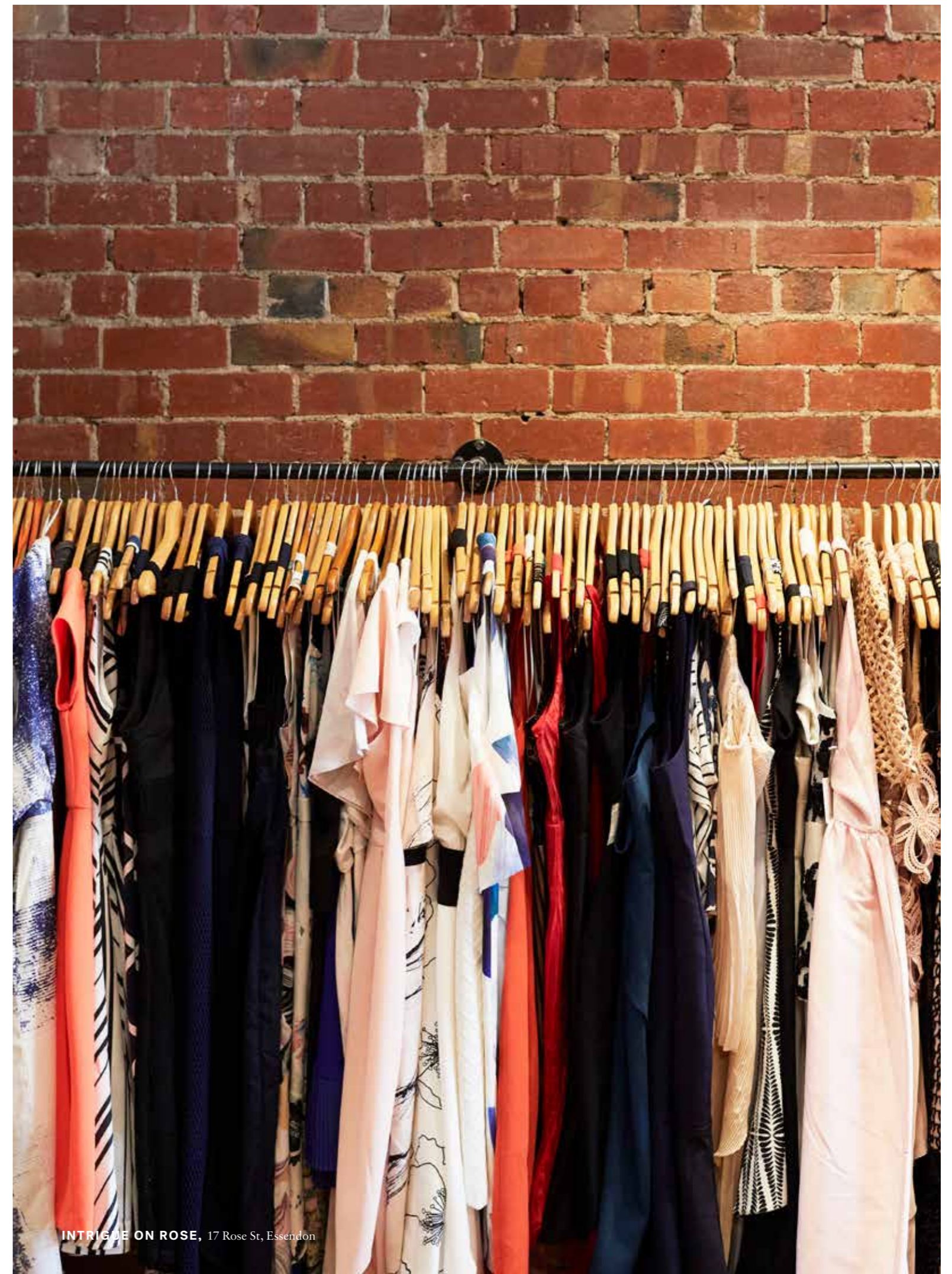
3. **ST ROSE**, 19 Rose St, Essendon



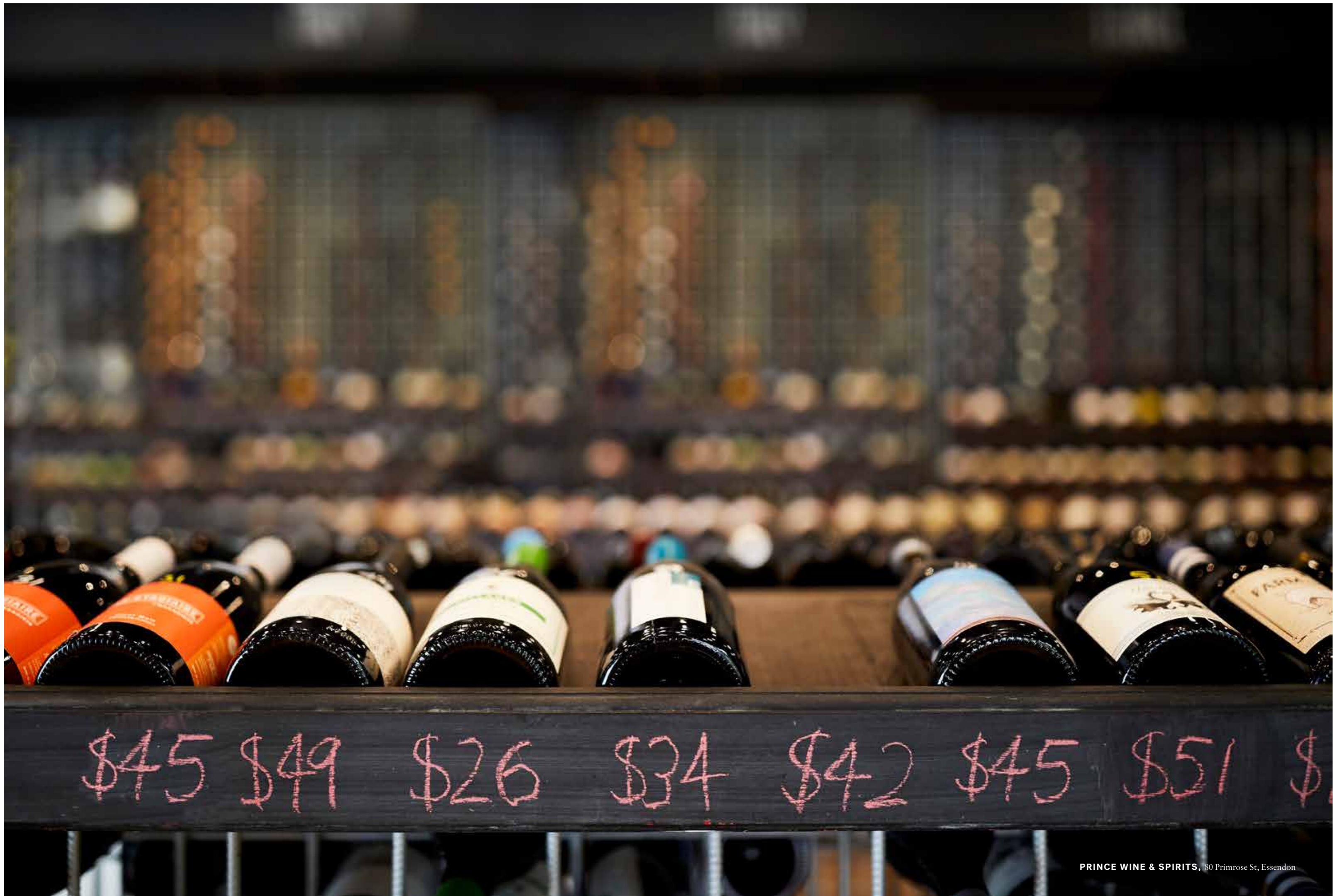
2. **400 GRADI**, 110 Keilor Rd, Essendon

When it comes to shopping, Essendon has all bases confidently covered.

At the heart of Essendon's shopping scene is LaManna Supermarket [5km], which has people travelling far and wide for its vast and unique range of provisions. It is simply described as a foodie wonderland, housing fresh produce, a butcher, deli, fishmonger, bakery, patisserie, imported goods, a liquor store and a cafe all under the one roof. Tekna residents also have fortunate access to the one-stop shopping spot that is DFO Essendon [3.3km]. With hundreds of brands at up to 90% off, it is all too tempting knowing you can make a sneaky trip around the corner. From sporting apparel giants to luxury labels from all around the globe, DFO caters to shopaholics of all tastes.



INTRIGUE ON ROSE, 17 Rose St, Essendon





1. LAMANNA SUPERMARKET,
10 English St, Essendon Fields



2. VILLAGE BLOOMS OF ESSENDON,
4 Leake St, Essendon North

A RETAIL *landscape*
CATERING FOR EVERY
OCCASION.



3. MOONEE PONDS CENTRAL,
14-16 Hall St, Moonee Ponds

A suburb with all the ingredients for a life of both excitement and comfort.

Tekna is among a land of green pockets and palm trees aplenty. If your soul seeks natural retreat, or to enjoy some time with loved ones out in the open, head to Queens Park [1km], Lincoln Park [1.2km] or Woodlands Historic Park [1.6km]. The project's surroundings are no stranger to premium schools, while a wide array of public transport routes are present to whisk you wherever you need to be, when you need to depart. Abundant with a sensational collection of amenities, this slice of the city is tailored for easy living.



CLOCKTOWER CENTRE, 750 Mt Alexander Rd, Moonee Ponds





1. **ESSENDON PRIMARY SCHOOL** 40 Raleigh St, Essendon

A SUBURB WHERE A
STRONG *community*
energy **REVERBERATES**
THROUGH THE STREETS.



2. **NO. 59 TRAM**, Mt Alexander Rd, Essendon



3. **PENLEIGH & ESSENDON GRAMMAR JUNIOR SCHOOL**, 49-59 Raleigh St, Essendon

A collective with an innate knowledge of creating residential masterpieces.

ARCHITECTS - FENTON DESIGN GROUP

Founded in 2003, Fenton Design Group is an architectural practice whose philosophy is based upon providing design solutions that are creative yet practical. Led by Brendan Fenton, the firm embraces environmental and sustainability constraints, and addresses core economic and demographic considerations, throughout its projects in the residential, retail and commercial sectors.

INTERIOR DESIGNERS - ARKEE

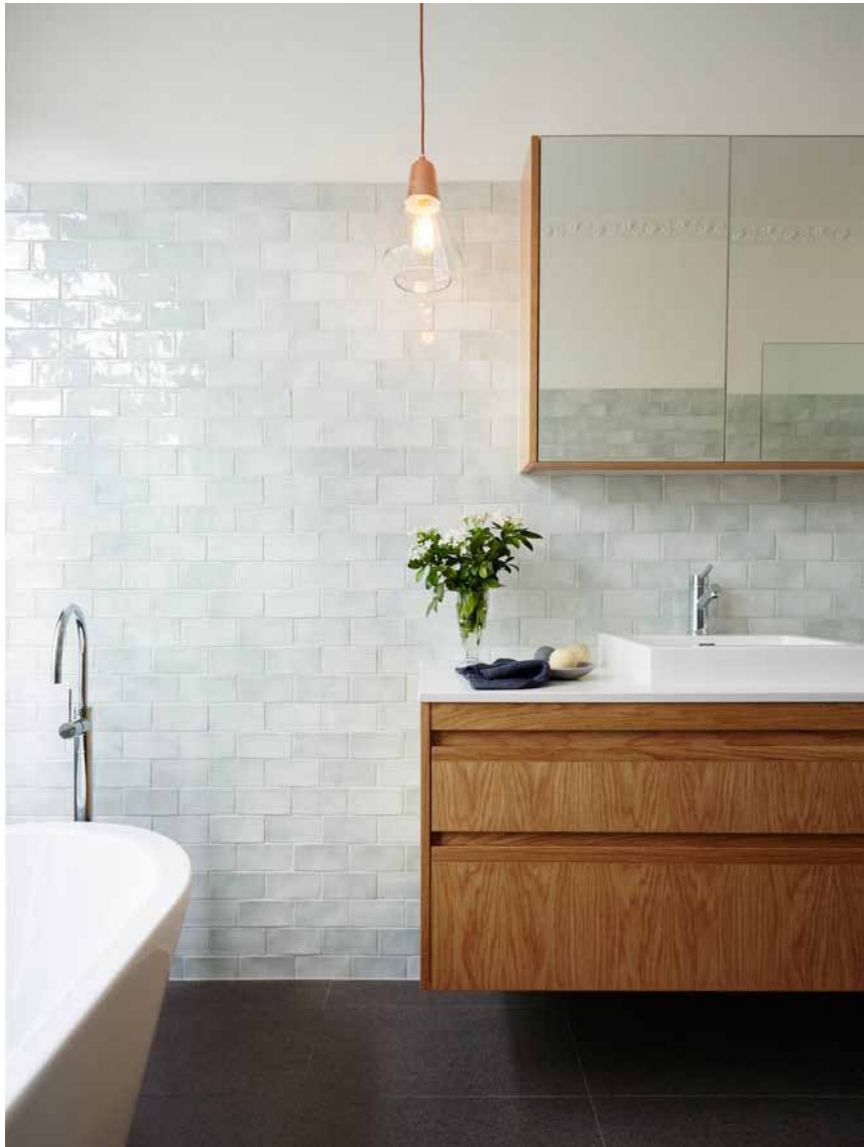
Arkee is an interior design firm that thrives on creating new communities, places and homes that engage and inspire its users. The company, which has designed projects across the residential, corporate, retail and hospitality sectors, brings a coordinated and detailed approach to its projects, to ensure that each one is delivered to fulfil the needs of clients and end users.

PROJECT MANAGER - PURE PROJECTS

Pure Projects is a specialist project management service provider founded on the principle of valuing long-term relationships with clients, partners and suppliers. The company's approach is to carefully select delivery methodology for each project, balancing its clients' drivers and appetite for risk.



1. **QUEST APARTMENTS,**
Fenton Design Group



3. **NORTHCOTE RESIDENCE, VIC**
Arkee



2. **FAIRWATER RESIDENCE, NSW**
Arkee

While all reasonable care has been taken in the preparation of this brochure and the particulars contained herein, it is intended to be a visual aid and does not necessarily depict the finished state of the property or object shown. No liability whatsoever is accepted for any direct or indirect loss or consequential loss or damage arising in any way out of any reliance upon this brochure. Purchasers must rely upon their own enquiries and inspections. Furniture is not included with the property. Dimensions and specifications are subject to change without notice. Illustrations and photographs are for presentation purposes and are to be regarded as indicative only. This brochure does not form part of, and is not, an offer or a contract of sale.

tekna