



# EASTWOOD

## MONASH

Apartments - 1 bed (2 types)

Apartments - 2 bed (6 types)

Townhouses - 3 bed & study (7 types)

Townhouses - 4 bed & study (2 types)

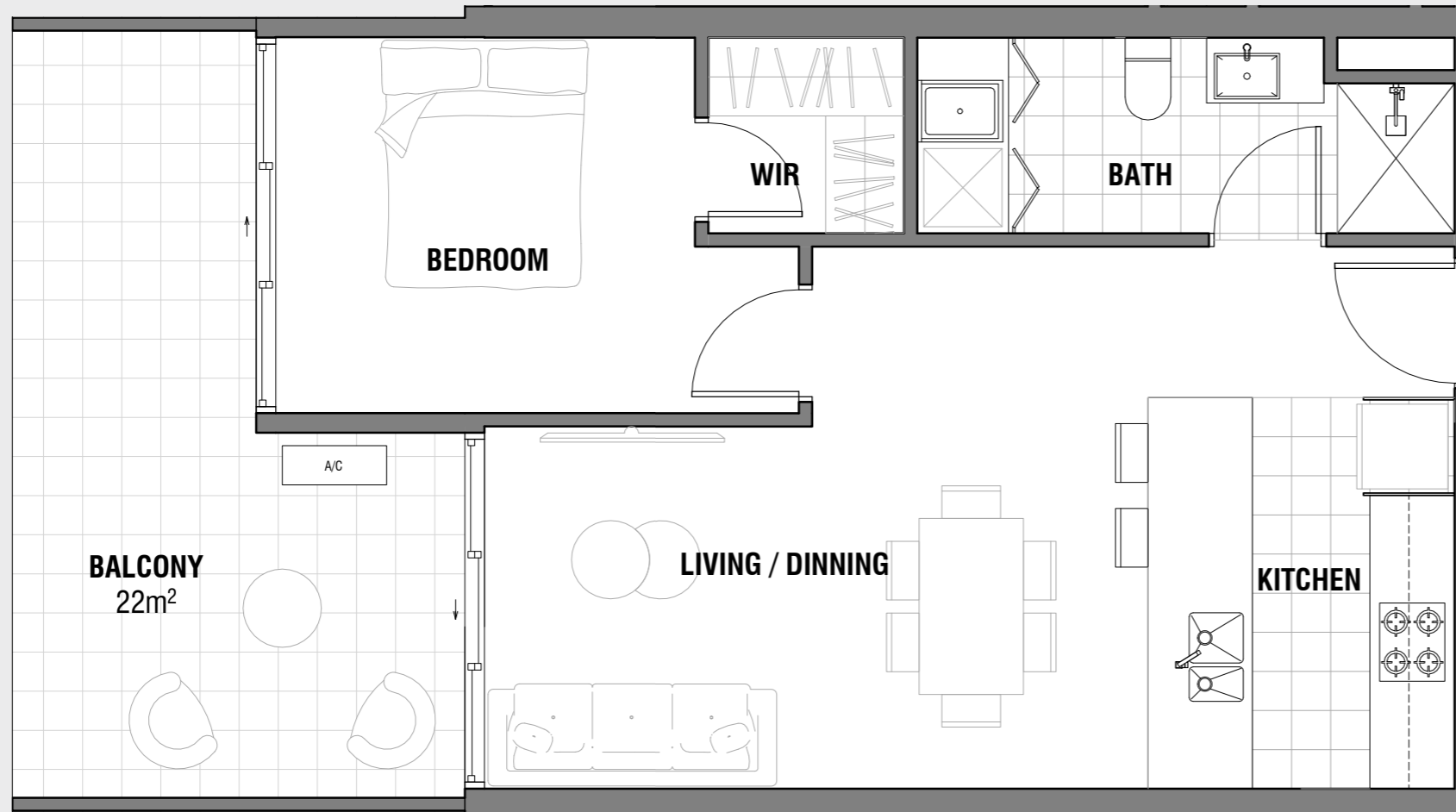
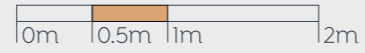
Townhouses - 5 bed & study (5 types)

Townhouses - 6 bed & study (2 types)



EASTWOOD  
MONASH

APARTMENTS  
**1 BEDROOM**



# EASTWOOD MONASH

## APARTMENT TYPE A1

1 BED • 1 BATH • 1 CAR SPACE

### Size

Internal area: 52m<sup>2</sup>\*

External area: 8m<sup>2</sup> to 22m<sup>2</sup>\*

Total area: 60m<sup>2</sup> to 74m<sup>2</sup>\*

### Apartments:

A.G05, A.105, A.205, A.302, A.303, A.305, A.306,  
A.307, B.G03, B.103, B.203, B.301, B.305, **C.G07**,  
C.107, **D.G05**, D.105

\* Please refer to price list for balcony size



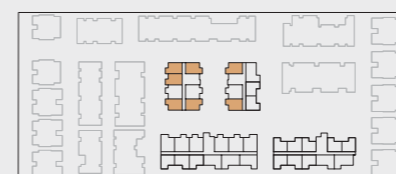
Ground Floor



Level 01

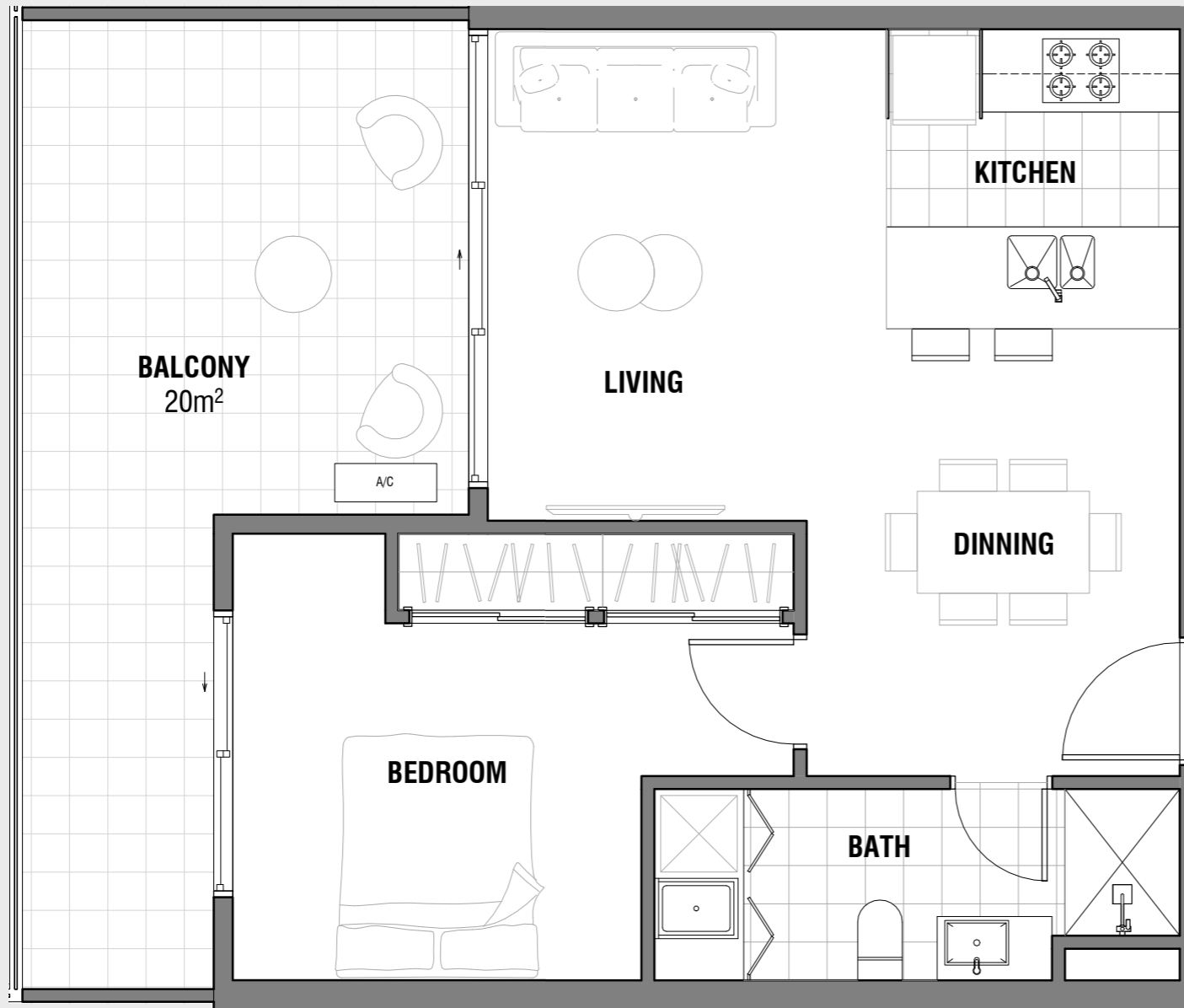
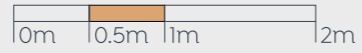


Level 02



Level 03

Dimension and areas are approximate and subject to change. Internal measurements are taken from centre line of party walls and external face of outside wall. Prospective purchasers must rely on their own enquiries and should refer to plans, terms and conditions in the contract of sale. Loose furniture, white goods and planters represented are not included. Courtyards are applicable to Ground Floor apartments only. All other apartments have been provided with private balconies.



# EASTWOOD MONASH

## APARTMENT TYPE A2

1 BED • 1 BATH • 1 CAR SPACE

### Size

Internal area: 52m<sup>2</sup>\*  
 External area: 8m<sup>2</sup> to 20m<sup>2</sup>\*  
 Total area: 60m<sup>2</sup> to 72m<sup>2</sup>\*

### Apartments:

B.303, B.304, **C.G09, C.G10**, C.109, C.110, C.207, C.208,  
 C.209, C.307, C.308, C.309, D.205, D.206, D.207, D.301,  
 D.302, D.305, D.306, D.307, D.308, D.309, D.310

\* Please refer to price list for balcony size



Ground Floor



Level 01



Level 02



Level 03

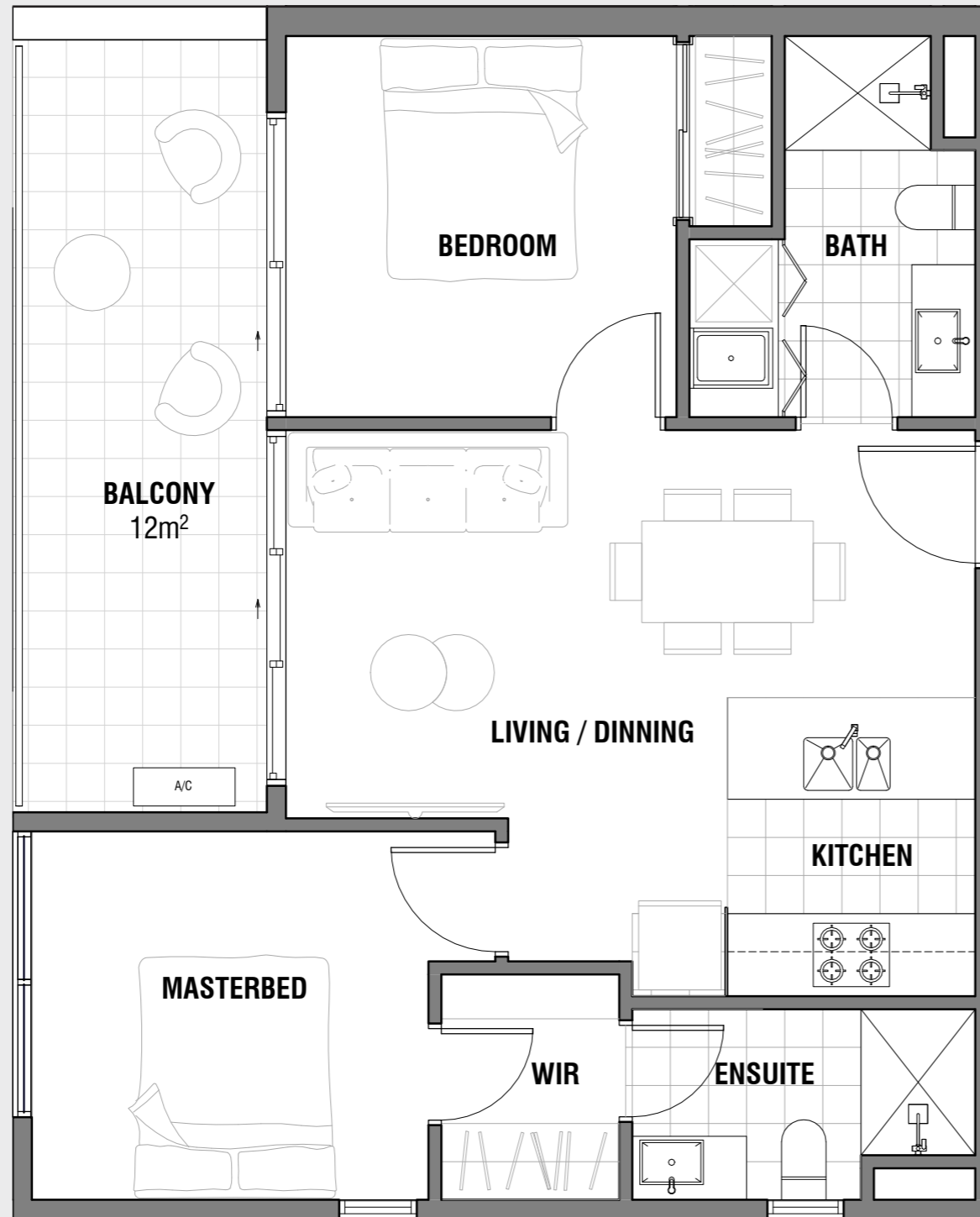
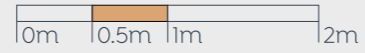
Dimension and areas are approximate and subject to change. Internal measurements are taken from centre line of party walls and external face of outside wall. Prospective purchasers must rely on their own enquiries and should refer to plans, terms and conditions in the contract of sale. Loose furniture, white goods and planters represented are not included. Courtyards are applicable to Ground Floor apartments only. All other apartments have been provided with private balconies.



# EASTWOOD

## MONASH

APARTMENTS  
**2 BEDROOM**



# EASTWOOD MONASH

## APARTMENT TYPE B1

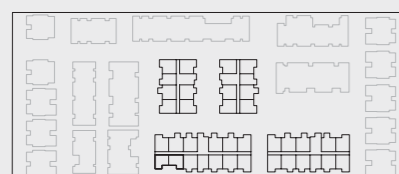
2 BED • 2 BATH • 1 CAR SPACE

### Size

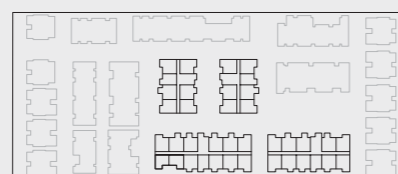
Internal area: 61m<sup>2</sup>  
External area: 12m<sup>2</sup>  
Total area: 73m<sup>2</sup>

### Apartments:

C.204, C.304



Ground Floor



Level 01



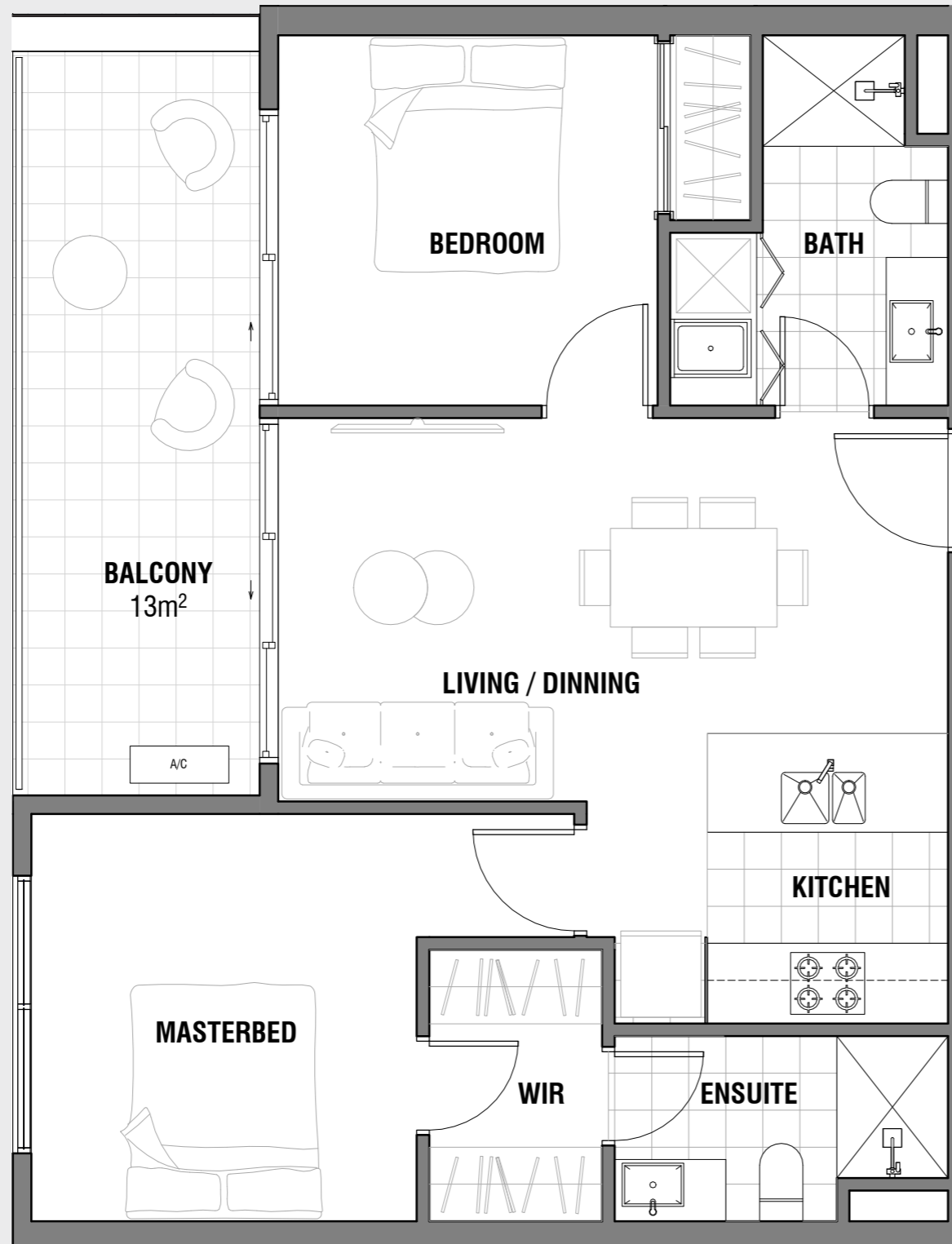
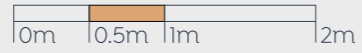
Level 02



Level 03

\* Please refer to price list for balcony size

Dimension and areas are approximate and subject to change. Internal measurements are taken from centre line of party walls and external face of outside wall. Prospective purchasers must rely on their own enquiries and should refer to plans, terms and conditions in the contract of sale. Loose furniture, white goods and planters represented are not included. Courtyards are applicable to Ground Floor apartments only. All other apartments have been provided with private balconies.



# EASTWOOD MONASH

## APARTMENT TYPE B2

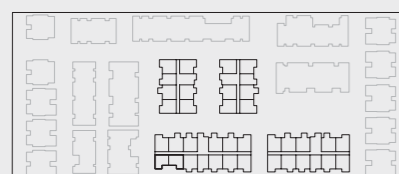
2 BED • 2 BATH • 1 CAR SPACE

### Size

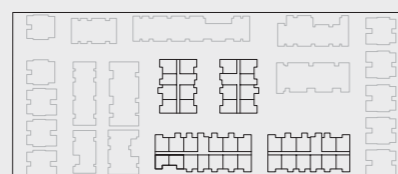
Internal area: 64m<sup>2</sup>  
External area: 13m<sup>2</sup>  
Total area: 77m<sup>2</sup>

### Apartments:

C.205, C.206, C.305, C.306, D.204, D.304



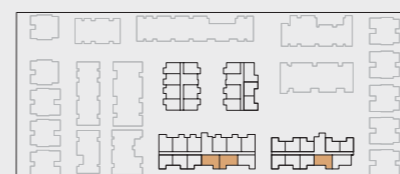
Ground Floor



Level 01



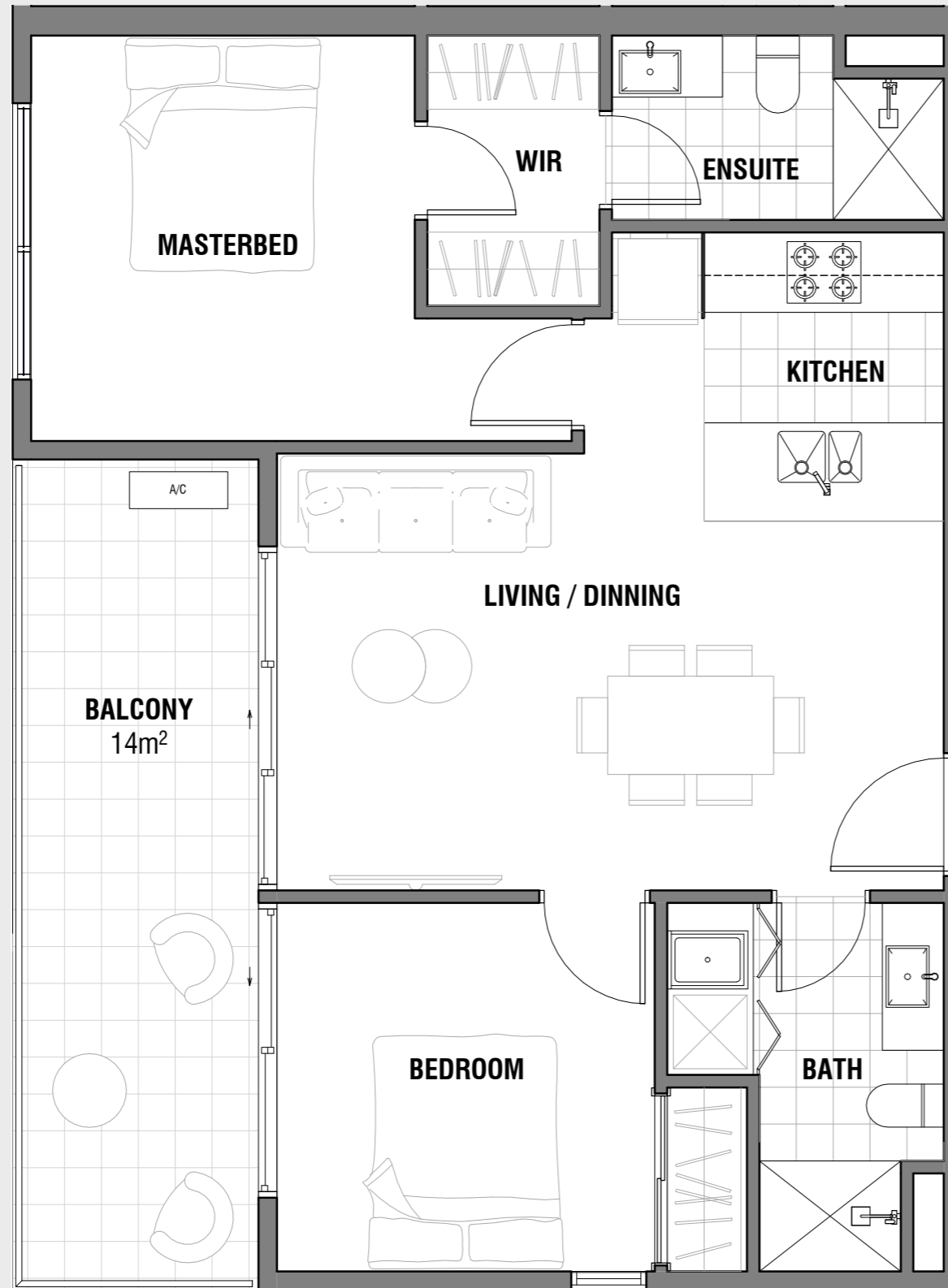
Level 02



Level 03

\* Please refer to price list for balcony size

Dimension and areas are approximate and subject to change. Internal measurements are taken from centre line of party walls and external face of outside wall. Prospective purchasers must rely on their own enquiries and should refer to plans, terms and conditions in the contract of sale. Loose furniture, white goods and planters represented are not included. Courtyards are applicable to Ground Floor apartments only. All other apartments have been provided with private balconies.



# EASTWOOD MONASH

## APARTMENT TYPE B2.1

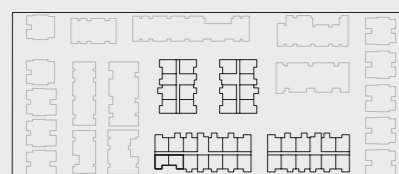
2 BED • 2 BATH • 1 CAR SPACE

### Size

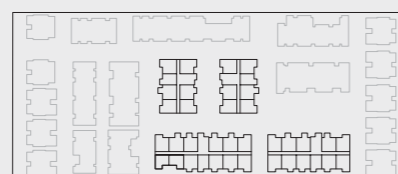
Internal area: 66m<sup>2</sup>  
 External area: 14m<sup>2</sup>  
 Total area: 80m<sup>2</sup>

### Apartments:

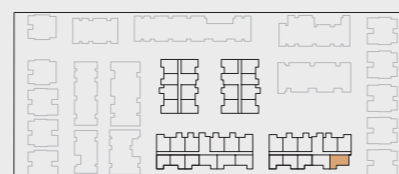
B.302, D.203, D.303



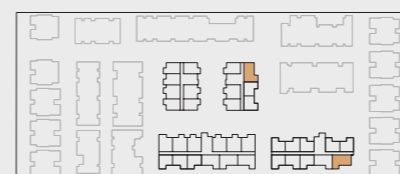
Ground Floor



Level 01



Level 02

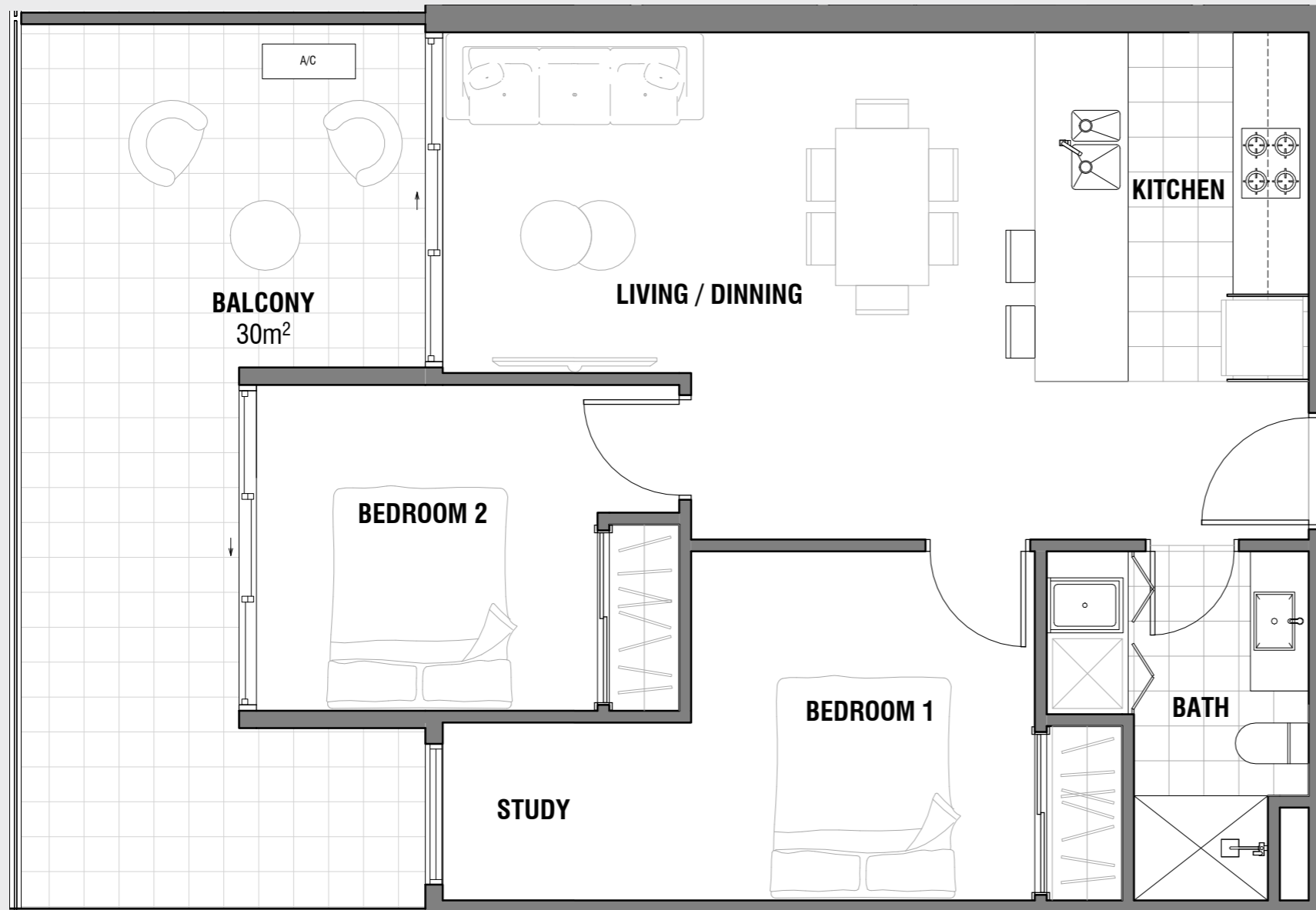
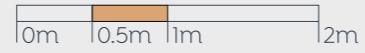


Level 03

\* Please refer to price list for balcony size

Dimension and areas are approximate and subject to change. Internal measurements are taken from centre line of party walls and external face of outside wall. Prospective purchasers must rely on their own enquiries and should refer to plans, terms and conditions in the contract of sale. Loose furniture, white goods and planters represented are not included. Courtyards are applicable to Ground Floor apartments only. All other apartments have been provided with private balconies.





# EASTWOOD MONASH

## APARTMENT TYPE B3

2 BED • 1 BATH • 1 CAR SPACE

### Size

Internal area: 65m<sup>2</sup>\*  
 External area: 8m<sup>2</sup> to 30m<sup>2</sup>\*  
 Total area: 73m<sup>2</sup> to 95m<sup>2</sup>\*

### Apartments:

A.G01, A.101, A.201, A.301, A.304, B.G07, B.107,  
 B.207, B.306, **C.G05, C.G06, C.G08**, C.105,  
 C.106, C.108, C.301, C.302, C.311, C.312, **D.G04,**  
**D.G06, D.G07**, D.104, D.106, D.107

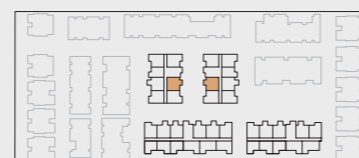
\* Please refer to price list for balcony size



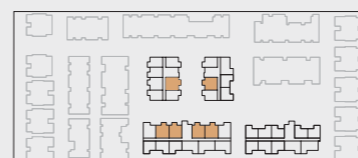
Ground Floor



Level 01

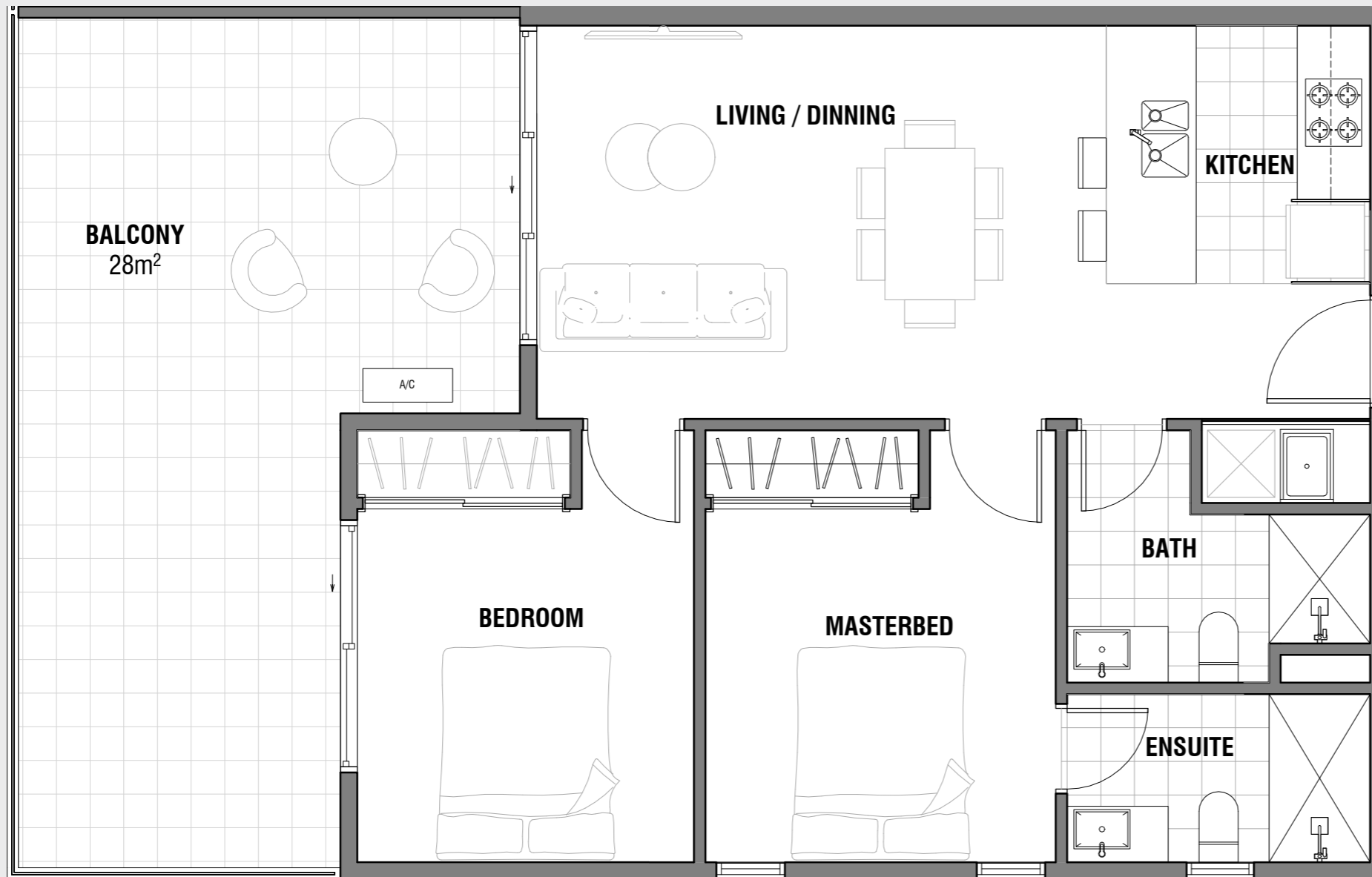
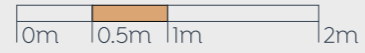


Level 02



Level 03

Dimension and areas are approximate and subject to change. Internal measurements are taken from centre line of party walls and external face of outside wall. Prospective purchasers must rely on their own enquiries and should refer to plans, terms and conditions in the contract of sale. Loose furniture, white goods and planters represented are not included. Courtyards are applicable to Ground Floor apartments only. All other apartments have been provided with private balconies.



# EASTWOOD MONASH

## APARTMENT TYPE B4

2 BED • 2 BATH • 1 CAR SPACE

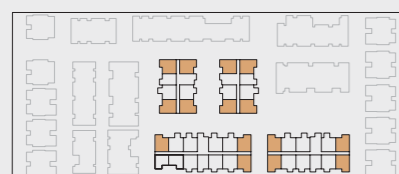
### Size

Internal area: 67m<sup>2</sup>\*  
 External area: 10m<sup>2</sup> to 28m<sup>2</sup>\*  
 Total area: 77m<sup>2</sup> to 95m<sup>2</sup>\*

### Apartments:

A.G02, A.G03, A.G06, A.G07, A.102, A.103, A.106, A.107,  
 A.202, A.203, A.206, A.207, B.G01, B.G02, B.G05, B.G06,  
 B.101, B.102, B.105, B.106, B.201, B.202, B.205, B.206,  
 C.G03, **C.G04**, C.G11, C.103, C.104, C.111, C.203, C.210,  
 C.303, C.310, D.G02, **D.G03**, **D.G08**, D.G09, D.102, D.103,  
 D.108, D.109, D.202, D.208

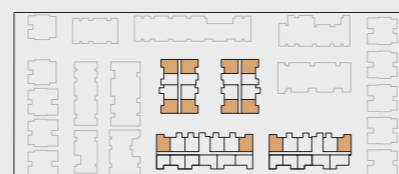
\* Please refer to price list for balcony size



Ground Floor



Level 01

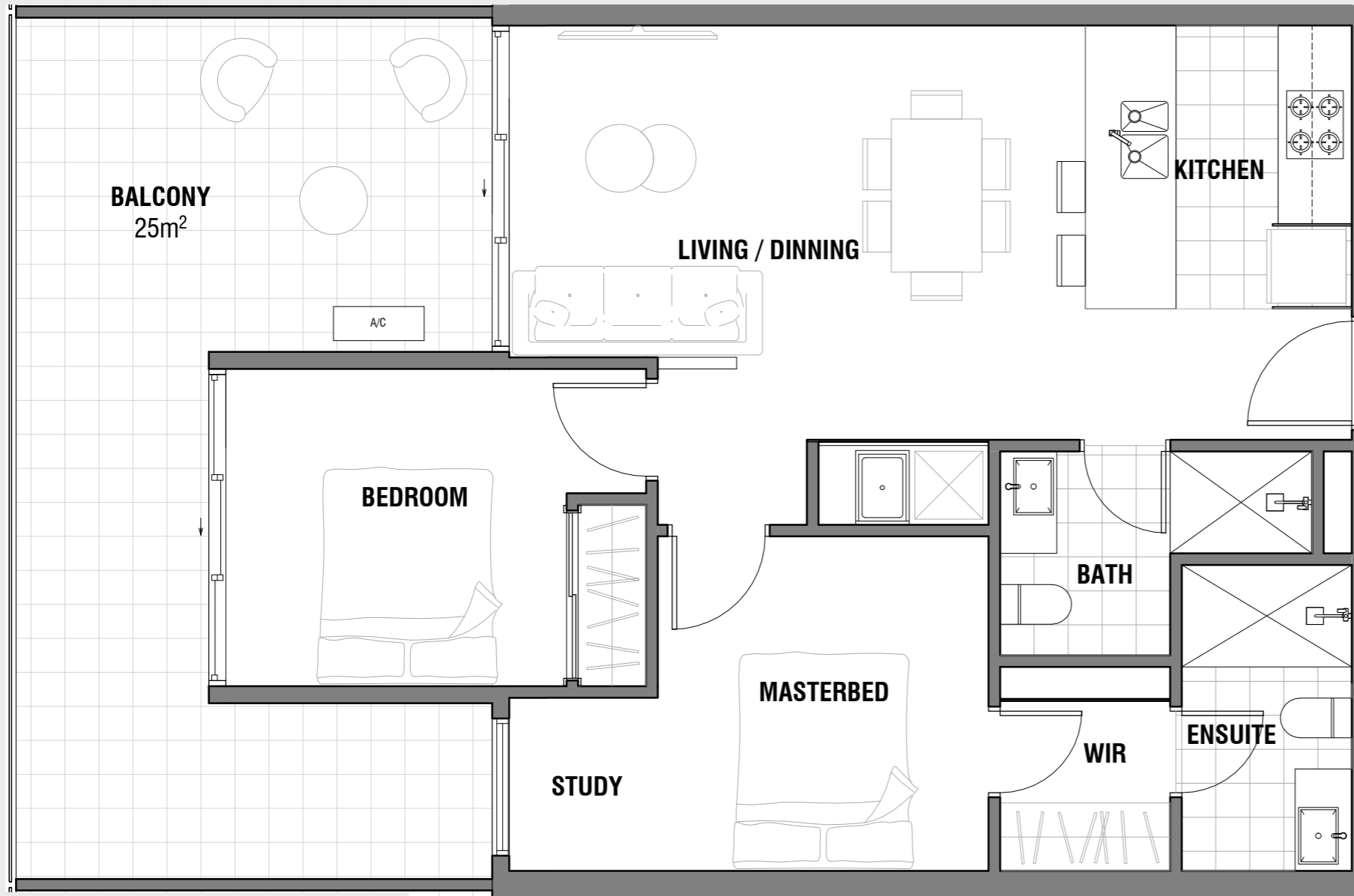
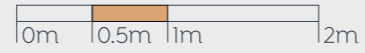


Level 02



Level 03

Dimension and areas are approximate and subject to change. Internal measurements are taken from centre line of party walls and external face of outside wall. Prospective purchasers must rely on their own enquiries and should refer to plans, terms and conditions in the contract of sale. Loose furniture, white goods and planters represented are not included. Courtyards are applicable to Ground Floor apartments only. All other apartments have been provided with private balconies.



# EASTWOOD MONASH

## APARTMENT TYPE B5

2 BED • 2 BATH • 1 CAR SPACE

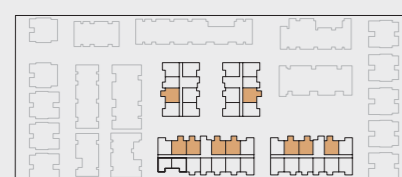
### Size

Internal area: 67m<sup>2</sup>\*  
External area: 9m<sup>2</sup> to 25m<sup>2</sup>\*  
Total area: 76m<sup>2</sup> to 92m<sup>2</sup>\*

### Apartments:

A.G04, A.104, A.204, B.G04, B.104, B.204, **C.G01**,  
C.G02, C.G12, C.G13, C.101, C.102, C.112, C.113,  
C.201, C.202, C.211, C.212, D.G01, D.G10, D.G11, D.101,  
D.110, D.111, D.201, D.209, D.210

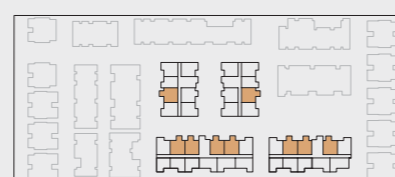
\* Please refer to price list for balcony size



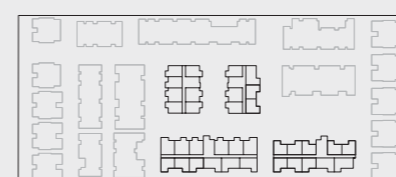
Ground Floor



Level 01



Level 02



Level 03

Dimension and areas are approximate and subject to change. Internal measurements are taken from centre line of party walls and external face of outside wall. Prospective purchasers must rely on their own enquiries and should refer to plans, terms and conditions in the contract of sale. Loose furniture, white goods and planters represented are not included. Courtyards are applicable to Ground Floor apartments only. All other apartments have been provided with private balconies.